

**Highland Township Fire Department
Fire Station No. 1**

**ADDENDUM No. 2
April 27, 2020**

Bid Proposal Due Date: **May 5, 2020 @ 2:00PM**

The following clarifications and/or Changes made to the Contract Documents are hereby made part of the Contract Documents.

All bidders shall be held responsible to review the Addendum and to include in its Bid Proposal all Work reasonably inferred to be included in its Scope of Work.

Acknowledge receipt of this Addendum in the space provided on the Bid Proposal Form.

1. Division 00 – Bidding and Contract Requirement Modifications:

a) Section 00300-Bid Division Index & Description

1. Add Addendum No. 2

2. Clarifications/Questions

a) Clarifications

1. Q: there are no specs for the sound and radio systems, and the riser diagram says, see sheets E2.01 and E2.02 for quantities and locations, but these sheets are not in the drawing set.
2. Q: The drawings for the Fire alarm system, only shows 8 detectors, 1 flow/tamper switch and 1 horn strobe unit, is this the extent of the fire alarm system?
3. Q: BC 800 Doors/Frames/Hardware. The Flush wood Door spec lists both particleboard core doors and structural composite lumber (SCL) Door cores? SCL core is considerably more expensive than the common particle core Doors. Are we to provide SCL core or particleboard core?
4. Overhead Door-Is electric safety edge also required?
5. Overhead Door-What is glass type? IE ½" DSB is considered standard.
6. Overhead Door-Please clarify 2.2 G10
7. Refer to Sheet A8-01 Detail 10 & A-4-02 Detail 6, How is the TV going to get mounted provide detail?
8. Refer to Sheet M2-01 Note No. 4, Are we to include an Ansel System due to the type of Exhaust Fan?
9. Refer to Sheet A6-10 Detail No. 8, You call for the exterior wall to be 8", should it be 12"?

3. Documents

a) Partners in Architectural, PLC Partners in Architectural, PLC

1. Addendum No. 2-Write up and drawings-Attached

ADDENDUM 2

Project Name: Highland Township – Highland Township Fire Station No. 1 Addendum No: Two (2)

Project Number: 18-122A Issue Date: April 27, 2020
Project Location: 1600 W. Highland Rd. Highland, MI 48357

This Addendum forms a part of the above described Architectural & Structure Bidding/Permit documents and supersedes, supplements or clarifies parts thereof to the extent defined by the terms set forth in this Addendum.

This Addendum consists of (3) typed page(s) and the following attachments :

Drawings: Exterior Elevations (A5-01), Wall Section (A6-04), Section Details (A6-10), Section Details (A6-11)

Specifications: 000200 Material Finish Color Schedule, 061533 Wood Decking, 095666 Resilient Athletic Flooring

ARCHITECTURAL DRAWINGS:

- ITEM A1 A0-02 LIFE SAFETY CODE INFORMATION (REVISED BUT NOT RE-ISSUED)
A. Add 1-HR rating to steel beam below mezzanine floor.
- ITEM A2 A0-03 ROOM FINISH SCHEDULE & WALL TYPES (REVISED BUT NOT RE-ISSUED)
A. Provide sealant at floor/wall at epoxy and sealed concrete finish floors – color to match floor finish. Floor sealant to be traffic grade sealant.
- ITEM A3 A0-14 OPENING DETAILS (REVISED BUT NOT RE-ISSUED)
A. Transition Detail (T6) profile adjusted to be 3-1/2" wide and aligned with interior of door face.
- ITEM A4 A3-01 MAIN LEVEL FLOOR PLAN (REVISED BUT NOT RE-ISSUED)
A. Interior walls of Outdoor Storage room 140 to have cavity filled insulation.
B. Both W-1 windows in SCBA Maintenance 137 to be removed.
C. At Floor Drain locations, slope slab (-1") to drain location
- ITEM A5 A3-10 ENLARGED FLOOR PLAN (REVISED BUT NOT RE-ISSUED)
A. Detail 4 interior elevation callout changed to A8-02.
- ITEM A6 A3-22 PLAN DETAILS (REVISED BUT NOT RE-ISSUED)
A. Vertical angle on Detail 1 to be 8" x 4" x 5/16" Galv. – height of door track typ.
B. On Detail 1, Add 2" x 1/4" Steel anchor at 2' o.c. vertical welded to steel angle. Weld to steel angle prior to galv. Coordinate with masonry coursing.
- ITEM A7 A3-30 ROOF PLAN (REVISED BUT NOT RE-ISSUED)
A. Remove continuous intake vent at fiber cement soffit – note 8.
B. Add continuous intake vent at entry vestibule soffit – refer to detail 2/A6-11.

- ITEM A8 A4-01 REFLECTED CEILING PLAN (REVISED BUT NOT RE-ISSUED)
A. Add Mechanical grills, exposed ducts, and Dehumidifier to reflected ceiling plan. Coordinate with Electrical and Mechanical
B. Added Access Hatches to gypsum ceilings wherever mechanical equipment is located– Coordinate with Mechanical.
- ITEM A9 A5-01 EXTERIOR ELEVATIONS
A. Added cedar truss detail.
- ITEM A10 A6-01, A6-02, A6-03 SECTIONS (REVISED BUT NOT RE-ISSUED)
A. Concrete slab joints to be sealed with traffic grade joint sealer to match floor color.
B. Added insulation baffles at all overhangs.
C. Added insulated and soaped block between joist bearing and roof deck on detail 1/A6-01.
D. Added vapor barrier below attic insulation – adhere to bottom of light gage truss framing.
E. Attic batt. insulation to extend to exterior rigid insulation – add horizontal metal channel to hold batt. insulation at exterior wall where required.
F. Added cavity filled insulation on west interior apparatus bay, PPE storage, and transition walls where not grouted solid.
G. Cast stone sill flashing at non-opening locations to be similar to Detail 2 on A6-10
- ITEM A11 A6-04, A6-10, A6-11 SECTIONS
A. Detail 5 on A6-04 updated at cast stone sill
B. Details 2,9, & 11 updated on A6-10, refer to issued sheet
C. Details added to A6-11, refer to issued sheet
D. Callouts updated on A6-11, refer to issued sheet
- ITEM A12 A8-01 INTERIOR ELEVATIONS (REVISED BUT NOT RE-ISSUED)
E. Waterproofing Membrane under floor of shower in room Bath 203.

STRUCTURAL DRAWINGS:

MECHANICAL DRAWINGS:

ELECTRICAL DRAWINGS:

SPECIFICATIONS:

- ITEM SP1 SPECIFICATION SECTION 000200 – MATERIAL FINISH / COLOR SCHEDULE
A. Reissue for modifications to 061533 Wood Decking
B. Reissue for modifications to 074646 Fiber-Cement Soffit
C. Reissue for modifications to 09913 Exterior Painting
- ITEM SP2 SPECIFICATION SECTION 061533 – WOOD DECKING
A. New specification section issued this addendum.

ITEM SP3 SPECIFICATION SECTION 096566 – RESILIENT ATHLETIC FLOORING
 A. New specification section issued this addendum

****END OF ADDENDUM****

MATERIAL FINISH / COLOR SCHEDULE

PARTNERS 18-122
MATERIAL SCHEDULE
000200-1

Spec Section	Item	Description	Product Specified	Finish / Color	Location <small>(refer to drawings for exact locations)</small>
033000	CAST IN PLACE CONCRETE				
	CONC-1	NOT USED			
	SC-1	Concrete Finish	Sealed Concrete	Finish: Clear	Interior
042000	UNIT MASONRY				
	GFMU-1	Ground Face Masonry Unit	Brampton Brick	Finish / Color: Charcoal Suave	At all exposed exterior block
		Mortar	SGS Solomon	Color: Plain Masonry	
047200	CAST STONE				
	CS-1	Cast Stone	Royal Stone	Color: 45 Gray	Exterior - Sill & Watertable
		Mortar	SGS Solomon	Color: Plain Masonry	
044313.13	ANCHORED MASONRY STONE VENEER				
	STN-1	Natural Stone	Fond du Lac Stone Inc.	Finish / Color: Mosaic, Graphite	Exterior
	STN-2	Thin Natural Stone	To Match STN-1	To Match STN-1	Exterior
		Mortar	SGS Solomon	Color: Plain Masonry	
055213	PIPE AND TUBE RAILINGS				
Alt.		Aluminum Railing	Timber Tech - Impression Rail	Finish / Color: Black	Exterior Balcony
062023	INTERIOR FINISH CARPENTRY				
	ST-2	Wood Stain	White Maple, plain sliced	Custom Stain to Match WC-1	

MATERIAL FINISH / COLOR SCHEDULE

PARTNERS 18-122
MATERIAL SCHEDULE
000200-2

Spec Section	Item	Description	Product Specified	Finish / Color	Location <small>(refer to drawings for exact locations)</small>
061533	WOOD DECKING				
	CL-1	Composite Decking	Trex Enhance Basics, Facia Profiles 1" x 8" (.56" x 7.25" Actual)	Color: Beach Dune	Exterior - Above Windows
	CL-2	Composite Decking	Trex Enhance Basics, Facia Profiles 1" x 12" (.56" x 11.375" Actual)	Color: Beach Dune	Exterior - Above Apparatus Bay OH Doors
073113	ASPHALT SHINGLES				
	ARS-1	Architectural Roof Shingles	Landmark PRO	Color: Max Def Pewterwood	Roof
074293	SOFFIT PANELS				
	MS-1	Metal Soffit	Manufactuer: Quality Edge Product Line: Porch Ceiling Collection	Color: Light Cherry (947)	Exterior - Soffit
074646	FIBER-CEMENT SIDING				
	SD-1	Fiber-Cement Siding - Boards	HardiePanel	Finish: Select Cedarmill Color: PNT-5	Exterior - Board
	SD-2	Fiber-Cement Siding - Battens	HardieTrim Batten Boards	Finish: Rustic Grain. Color: PNT-5	Exterior - Batten
	SD-3	Fiber-Cement Trim Board	HardieTrim - 5/4 Roughsawn	Finish: Roughsawn Color: PNT-4	Exterior - Trim Board
	SD-4	Fiber-Cement Soffit	HardieSoffit	Vented Select Cedarmill Color: Per Manufacturer's Standard Colors	Exterior - Soffit
077100	ROOF SPECIALTIES				
	MRS-1	Roof Edge Fascia and Break Metal Fascia Cladding	Pac-Clad	Cityscape	
	MRS-2	Pre-Finished Aluminum Gutters/Downspouts	Pac-Clad	Cityscape	

MATERIAL FINISH / COLOR SCHEDULE

PARTNERS 18-122
MATERIAL SCHEDULE
000200-3

Spec Section	Item	Description	Product Specified	Finish / Color	Location <small>(refer to drawings for exact locations)</small>
079200	JOINT SEALANTS				
		Sealant at Masonry Block		Custom Match to <u>each</u> Masonry Block type	Exterior
081113	HOLLOW METAL DOORS AND FRAMES				
	HM, KD	Flush Hollow Metal Frame		Refer to door schedule	Interior & exterior openings
081416	FLUSH WOOD DOORS				
	ST-1	Pre-finished Wood Door	Masonite Architectural - Aspiro Series	Finish / Color: White Maple, Stout	Interior Doors refer to opening schedule
083613	SECTIONAL DOOR				
		Overhead Sectional Door	C.H.I. Overhead Doors - 3297 Full-View Aluminum Insulated	Finish / Color: Powder Coating to Match PNT-3	Exterior
084113	ALUMINUM-FRAMED ENTRANCES AND STOREFRONTS				
	ANOD-1	Storefront System	As Specified	Color: Dark Bronze	Exterior Doors
084115	FIBERGLASS REINFORCED POLYSTER (FRP) DOOR				
	FRP-1	FRP Door with Aluminum Frame	Special-Lite, SL-17 Sandstone Texture FRP/Aluminum Hybrid Door	Color: Light Grey #5597	Exterior Doors
088000	GLAZING				
	IG-10	Non-Tempered Insulating Glass	Trulite Glass & Aluminum Solutions, LLC		Exterior Glazing
		Transaction Counter Glazing			Interior - Transaction Counters

MATERIAL FINISH / COLOR SCHEDULE

PARTNERS 18-122
MATERIAL SCHEDULE
000200-4

Spec Section	Item	Description	Product Specified	Finish / Color	Location <small>(refer to drawings for exact locations)</small>
089000	LOUVERS AND VENTS				
		Louvers	Ruskin Stationary Louver	Custom Colors to Match Masonry at each location	
093000	TILING				
	PT-1	Porcelain Tile	American Olean - Theoretical, 2" x 2" Mosaic	Color / Finish: Creative Gray (TH96)	Interior - Floor Tile
	PT-2	Porcelain Tile	American Olean - Theoretical 12" x 24" Field Tile 3" x 12" Bullnose	Color / Finish: Logical Gray (TH95)	Interior - Wall Tile
	PT-3	Porcelain Tile	American Olean - Theoretical 12" x 24" Field Tile	Color / Finish: Abstract Black TH99	Interior - Accent Tile
	STN-2	Thresholds	Daltile - Double Hollywood Bevel 4"W x 36" L X 5/8"H (ADA Compliant)	Finish: Carrara White M701 - Polished	Interior - Restrooms & Baths
	MT-1	Metal Wall Edge Protection	Schluter Systems - QUADDEC, 5/16" (Q 45 AE)	Finish: Satin Anodized Aluminum	Interior
		Grout	TEC 1/8" Grout Joint Thickness	Color: 934 Delorean Gray	Interior - Floor Tile
		Grout	TEC 1/8" Grout Joint Thickness	Color: 949 Silverado	Interior - Wall Tile

MATERIAL FINISH / COLOR SCHEDULE

PARTNERS 18-122
MATERIAL SCHEDULE
000200-5

Spec Section	Item	Description	Product Specified	Finish / Color	Location <i>(refer to drawings for exact locations)</i>
095123	ACOUSTICAL TILE CEILINGS				
	ACT-1	2' x 4' Acoustical Tile with 15/16" grid	Tile USG - Radar CinemaPLUS Performance (SLT Edge) Grid: USG Donn DX/DXL	Color: Flat Black 205	Interior - Refer to Room Finish Schedule
	ACT-2	2' x 2' Acoustical Tile with 15/16" grid	Tile USG - Radar CinemaPLUS Performance (SLT Edge) Grid: USG Donn DX/DXL	Color: Flat Black 205	Interior - Refer to Room Finish Schedule
096513	RESILIENT BASE AND ACCESSORIES				
	RB-1	Coved Resilient Wall Base	Roppe Wall Base - 4"	Color: 177 Steel Blue	Interior - Refer to Room Finish Schedule
096519	RESILIENT TILE FLOORING				
	LVT-1	Luxury Vinyl Tile	Shaw Contract - Surface 18" x 36"	Color: Natural (15155)	Interior
	LVT-2	Luxury Vinyl Tile	Shaw Contract - Cove (1027V) 9" x 48"	Color: Gesso (27520)	Interior
096566	RESILIENT ATHLETIC FLOORING				
	AF-1	Resilient Athletic Flooring	Matsinc. - Decathlon Standard 9 mm Thickness	Finish: Red	Interior
096723	RESINOUS FLOORING				
	EP-1	Epoxy Flooring	Florock - FloroShop	Color: Standard Grey 4805	Interior
096813	TILE CARPETING				
	CPT-1	Tile Carpet	Shaw Contact - Mindful Play, Think Tile (5T186) 24"x 24"	Color: Transform 86585 Install: Quarter Turn	Interior
	WO-1	Walk-Off Carpet	Shaw Contract - All Access 24" x 24" Path 5T034	Finish: Ebony 34500	Interior

MATERIAL FINISH / COLOR SCHEDULE

PARTNERS 18-122
MATERIAL SCHEDULE
000200-6

Spec Section	Item	Description	Product Specified	Finish / Color	Location <i>(refer to drawings for exact locations)</i>
097200	WALL COVERINGS				
	WC-1	Wood Veneer Wallcovering	Koroseal - Arbor Wood Veneer Wallcovering	Color: Cherry, American Flat Cut (AA2511)	Interior
	WC-2	NOT USED			
	WC-3	Vinyl Wallcovering	Koroseal - Timberline Wall Covering	Finish/Color: Cashmere T122-51	Interior
	WC-4	Vinyl Wallcovering	Koroseal - Timberline Wall Covering	Finish/Color: Rosewood T122-50	Interior
	WC-5	Projectable / Writable Wallcovering	Koroseal - Walltalkers - Project Rite	Finish/Color: White	Interior
098433	SOUND-ABSORBING WALL UNITS				
	FWAP-1	Fabric Wrapped Acoustical Panels	Koroseal -		Interior
099113	EXTERIOR PAINTING				
	PNT-4	Paint	Sherwin Williams	Color: SW 7660 Earl Gray	Exterior - Siding (Trim, Soffit)
	PNT-5	Paint	Sherwin Williams	Color: SW 7075 Web Gray	Exterior - Siding (Board, Batten)
	ST-2	Rough Sawn Cedar Stain	Sherwin Williams Woodscapes Exterior Polyurethane Semi-Transparent Stain	Color: Per Manufacturer's Standard Colors	Refer to Exterior Elevations

MATERIAL FINISH / COLOR SCHEDULE

PARTNERS 18-122
MATERIAL SCHEDULE
000200-7

Spec Section	Item	Description	Product Specified	Finish / Color	Location <i>(refer to drawings for exact locations)</i>
099123	INTERIOR PAINTING				
	PNT-1	Paint	Sherwin Williams	Color: SW 6253 Olympus White	Interior - Field
	PNT-2	Paint	Sherwin Williams	Color: SW 6257 Gibraltar	Interior
	PNT-3	Paint	Sherwin Williams	Color: SW 7588 Show Stopper	Interior - Accent Red
	PNT-6	Paint	Sherwin Williams	Color: SW 6255 Morning Fog	Interior
	PNT-7	Paint	Sherwin Williams	Color: SW 6990 Caviar	Interior
	EP PNT-1	Paint	Sherwin Williams	Color: SW 6253 Olympus White	Interior - Refer to Room Finish Schedule
101419	SIGNAGE AND DIMENSIONAL LETTERS				
	LED Letters	New Generation Signs	Back-Lit Metal Channel Letters	Color: Black	Exterior
102600	WALL AND DOOR PROTECTION				
	WP-1	Wall Protection	Korogard BW80 Wood Chair Rail	Backing Finish: Charcoal (77) Bumper Finish: Riga Birch WC	Interior
	WP-2	Rigid Wallcovering	Koroguard - Protective Wall Covering	Finish/Color: Black 01	Interior
		Corner Guards	Korogard G800 Series Vinyl Corner Guard	Finish: Fog	Interior - PNT-1 corners
		Corner Guards	Construction Specialties, Inc - Acrovyn Corner Guards, SSM-20N	Finish: 318 Berry Red	Interior - PNT-3 corners
		Corner Guards	Korogard G800 Series Vinyl Corner Guard	Finish: Riga Birch WC	Interior - WC-3 corners
		Corner Guards	Construction Specialties, Inc - Acrovyn Corner Guards, ACO-8	Finish: Chocolate Pear WK	Interior - WC-4 corners

MATERIAL FINISH / COLOR SCHEDULE

PARTNERS 18-122
MATERIAL SCHEDULE
000200-8

Spec Section	Item	Description	Product Specified	Finish / Color	Location <i>(refer to drawings for exact locations)</i>
105113	METAL LOCKERS				
		Wall Mounted Metal Lockers	GearGrid - Standard Fire Station Wall Mounted Lockers	Per Manufacturer's Standard Colors	Interior
123216	MANUFACTURED CASEWORK				
	PL-1	Plastic Laminate	Pionite	Finish / Color: ME011-G Pyrenees Marble	Interior
	PL-2	Plastic Laminate	Pionite	Finish / Color: Slate Element AV791	Interior
	PL-3	Plastic Laminate	Pionite	Finish / Color: WM221 Amber Curly Maple	Interior
	PL-4	Plastic Laminate	Wilsonart	Finish / Color: D12K-18 Regimental Red (Linearity Finish)	Interior
123661.16	SOLID SURFACING COUNTERTOPS				
	SS-1	Countertop	Corian	Finish / Color: Cosmos Prima	Interior

SECTION 061533 – WOOD DECKING

PART 1 GENERAL

1.1 SECTION INCLUDES

- A. Composite decking.

1.2 RELATED SECTIONS

- A. Section 06-1100 - Wood Framing.

1.3 REFERENCES

- A. ASTM D-1413-99: Test Method for Wood Preservatives by Laboratory Soil-block Cultures, ASTM International.
- B. ASTM D-2565-99: Practice for Operating Xenon Arc-type Light-exposure Apparatus With or Without Water for Exposure of Plastics, ASTM International.
- C. ASTM D-2915-98: Practice for Evaluating Allowable Properties for Grades of Structural Lumber, ASTM International.
- D. ASTM D-2990-95: Test Method for Tensile, Compressive, and Flexural Creep and Creep-rupture of Plastics, ASTM International.
- E. ASTM D-3345-74 (1999): Test Method for Laboratory Evaluation of Wood and Other Cellulose Materials for Resistance to Termites, ASTM International.
- F. ASTM D-5456-99a: Specification for Evaluation of Structural Composite Lumber Products, ASTM International.
- G. ASTM D-6109-97: Standard Test Method for Flexural Properties of Un-reinforced and Reinforced Plastic Lumber, ASTM International.
- H. ASTM D-7031-04: Standard Guide for Evaluating Mechanical and Physical Properties of Wood-Plastic Composite Products, ASTM International.
- I. ASTM D-7032-04: Standard Specification for Establishing Performance Ratings for Wood-Plastic Composite Deck Boards and Guardrail systems (Guards or Handrails), ASTM International.
- J. ASTM E-4-99: Practices for Force Verification of Testing Machines, ASTM International.
- K. ASTM E-84-01: Test Method for Surface Burning Characteristics of Building Materials, ASTM International.
- L. ASTM E-330-97: Standard Test Method for Structural Performance of Exterior Windows, Curtain Walls, and Doors by Uniform Static Air Pressure Difference, ASTM International.
- M. ASTM F-1679: Standard Test Method for Using a Variable Incidence Tribometer (VIT).

1.4 DESIGN / PERFORMANCE REQUIREMENTS A.

Structural Performance:

1. Deck: Uniform Load: 100 lb/sq. ft.
2. Treads of Stairs: Concentrated Load: 750 lb/sq. ft., and 1/8" max. deflection with a concentrated load of 300 lb on area of 4 sq. in

B. Fire-Test-Response Characteristics per ASTM E-84:

1.5 SUBMITTALS

- A. Product Data: Indicate sizes, profiles, surface style, and performance characteristics.
- B. Samples: For each product specified, one sample, minimum size 4 inches long, representing actual product, color, and finish.

1.6 DELIVERY, STORAGE, AND HANDLING A.

Storage and Handling:

1. Never dump TimberTech materials when unloading.
2. Store on a flat surface and cover with non-translucent material.
3. When carrying TimberTech planks, carry on edge for better support.
4. Refer to installation instructions for additional guidelines on each product.

1.7 WARRANTY

- A. Warranty: Limited Residential Warranty against rot, decay, splitting, checking, splintering, or termite damage for a period of 25 years beginning from date of purchase under normal conditions of use and exposure.

PART 2 PRODUCTS

2.1 MANUFACTURERS

- A. Contract Documents are based on products by: Trex Company, Inc. Enhance Composite Decking, Fascia Profiles plank. 160 Exeter Dr., Winchester, VA 22603
- B. Substitutions: Not permitted under Division 01.

2.2 APPLICATIONS/SCOPE

- A. Wood/Plastic Composite Lumber:
 1. Material Description: Composite plank consisting of recycled Linear Low Density Polyethylene (LLDPE) and recycled wood, extruded into sizes and shapes indicated with the following physical properties:
 - a. Trex Transcend and Trex Enhance Decking Boards; 1 x 5.5"
 - 1) Lengths-12, 16, and 20 feet.
 - b. Color: Refer to Material Finish Schedule Section 00002

- c. Specific Gravity: 1.2 g/cu. cm. when tested in accordance with ASTM D-792.
- d. Flexural Properties when tested in accordance with ASTM D-6109: Solid Profiles
 - 1) Modulus of Elasticity (MOE): 542,200 psi.- Ultimate
 - 2) Modulus of Rupture (MOR): 3157 psi. - UltimateFloorizon Plank
 - 1) Flexural Stiffness 426,508 lb·in⁴
 - 2) Moment Capacity 3157 in·lb
- e. Hardness when tested in accordance with ASTM D-143: 225 lb (101.25 kg).
- f. Water Absorption when tested in accordance with ASTM D-1037, %vol. <1.35%, %mass <1.29%.
- g. Flame Spread Index when tested in accordance with ASTM E-84: 75
- h. Direct Screw Withdrawal Force when tested in accordance with ASTM D-1761: 787 lbs/in.
- i. Slip resistance when tested in accordance with ASTM F-1679:
 - 1) Vertigrain Dry: 0.63 Wet: 0.55
 - 2) Brushed Dry: 0.77 Wet: 0.56
 - 3) Woodgrain Dry: 0.54 Wet: 0.43
- j. Smoke Development when tested in accordance with ASTM E-84, 200.
- k. Flash Ignition Temperature when tested in accordance with ASTM D-1929, 651 degrees F.
- l. Spontaneous Ignition Temperature when tested in accordance with ASTM D-1929, 788 degrees F.
- m. Coefficient of Linear Thermal Expansion when tested in accordance with ASTM D-696: length 2.0×10^{-5} in/in/°F, width 3.4×10^{-5} in/in/°F.
- n. Fungus Resistance (Brown/White Rot Fungus) when tested in accordance with ASTM D-1413: No decay.

2.3 ACCESSORIES

- A. Fasteners:
 - a. Concealed Fasteners: CONCEALoc hidden fasteners
 - b. Screws: No. 8, 2-1/2 inch stainless steel or high quality coated composite deck screws.

PART 3 EXECUTION

3.1 EXAMINATION

- A. Install according to manufactures instructions. B.
Cut, drill, and rout using carbide tipped blades.
- C. Pre-drill holes located closer than 1 1/2 inches from ends of plank. D.
Cut ends square.
- E. Do not use composite wood material for structural applications.

PARTNERS 18-122
WOOD DECKING
034010 - 4

3.2 CLEANING

- A. Clean surfaces regularly with a composite wood/plastic cleaner such as Corte Clean (www.corteclean.com) .
- B. Power wash with a fan tipped nozzle in the direction of the grain of the planks with a maximum of 1500 psi.

END OF SECTION 061533

SECTION 096566 - RESILIENT ATHLETIC FLOORING

PART 1 - GENERAL

1.1 SUMMARY

- A. Section Includes:
 - 1. Rubber sheet flooring.

1.2 COORDINATION

- A. Coordinate layout and installation of flooring with floor inserts for gymnasium equipment.

1.3 ACTION SUBMITTALS

- A. Product Data: For each type of product.
- B. Shop Drawings: Show installation details and locations of the following:
 - 1. Floor patterns.
 - 2. Layout, colors, widths, and dimensions of game lines and markers.
 - 3. Locations of floor inserts for athletic equipment installed through flooring.
 - 4. Seam locations for sheet flooring.
- C. Samples: For each exposed product and for each type, color, and pattern specified.

1.4 CLOSEOUT SUBMITTALS

- A. Maintenance data.

1.5 QUALITY ASSURANCE

- A. Sheet Vinyl Flooring Installer Qualifications: An experienced installer who has completed sheet vinyl flooring installations using seaming methods indicated for this Project and similar in material, design, and extent to that indicated for this Project; who is acceptable to manufacturer; and whose work has resulted in installations with a record of successful in-service performance.

PART 2 - PRODUCTS

2.1 RESILIENT ATHLETIC FLOORING (AF-1)

- A. Description: Post-consumer recycled rubber buffings with small percentages of colored EPDM athletic flooring provided as rolled goods for adhered installation. Basis of Design, Decathlon Resilient Athletic Flooring by Mats Inc. Chris Powers 586.215.6253 www.matsinc.com
- B. Material: Rubber wear layer and rubber shock-absorbent layer, laminated together with Urethane.
 - 1. Roll Size: 48 inches wide by longest length that is practical to minimize splicing during installation.
 - 2. Thickness: 9.0 mm
 - 3. Hardness per ASTM D-2240: 65
 - 4. Density per ASTM D-792: 60-80 lbs/cu. ft.
 - 5. Tensile Strength per ASTM D-412: 260-340 PSI.
 - 6. Static Load Limit per ASTM D-970: Passes, 150 PSI
 - 7. Coefficient of Friction per ASTM D-1894.95: >.8
- C. Color and Pattern: Refer to Section 000200 Material Finish / Color Schedule

2.2 ACCESSORIES

- A. Trowelable Leveling and Patching Compound: Latex-modified, hydraulic-cement-based formulation approved by flooring manufacturer.
- B. Adhesives: Water-resistant type recommended in writing by manufacturer for substrate and conditions indicated.

PART 3 - EXECUTION

3.1 PREPARATION

- A. Prepare substrates according to manufacturer's written instructions to ensure adhesion of flooring.
- B. Concrete Substrates: Prepare according to ASTM F 710.
 - 1. Verify that substrates are dry and free of curing compounds, sealers, and hardeners.
 - 2. Alkalinity Testing as required by manuf. selected.
 - 3. Moisture Testing: as required by manuf. selected.
- C. Remove substrate coatings and other substances that are incompatible with adhesives and that contain soap, wax, oil, or silicone, using mechanical methods recommended in writing by manufacturer. Do not use solvents.
- D. Use trowelable leveling and patching compound to fill cracks, holes, and depressions in substrates.

- E. Sweep and vacuum clean substrates to be covered by flooring immediately before installation. After cleaning, examine substrates for moisture, alkaline salts, carbonation, and dust. Proceed with installation only after unsatisfactory conditions have been corrected.

3.2 FLOORING INSTALLATION, GENERAL

- A. Comply with manufacturer's written installation instructions.
- B. Scribe, cut, and fit flooring to butt neatly and tightly to vertical surfaces, equipment anchors, floor outlets, and other interruptions of floor surface.
- C. Extend flooring into toe spaces, door reveals, closets, and similar openings unless otherwise indicated.
- D. Maintain reference markers, holes, and openings that are in place or marked for future cutting by repeating subfloor markings on flooring. Use nonpermanent, nonstaining marking device.

3.3 SHEET FLOORING INSTALLATION

- A. Unroll sheet flooring and allow it to stabilize before cutting and fitting.
- B. Lay out sheet flooring as follows:
 - 1. Maintain uniformity of flooring direction.
 - 2. Match edges of flooring for color shading at seams.
 - 3. Locate seams according to approved Shop Drawings.
- C. Adhere products to substrates using a full spread of adhesive applied to substrate to comply with adhesive and flooring manufacturers' written instructions, including those for trowel notching, adhesive mixing, and adhesive open and working times.
 - 1. Provide completed installation without open cracks, voids, raising and puckering at joints, telegraphing of adhesive spreader marks, and other surface imperfections.

3.4 CLEANING AND PROTECTION

- A. Perform the following operations immediately after completing flooring installation:
 - 1. Remove adhesive and other blemishes from flooring surfaces.
 - 2. Sweep and vacuum flooring thoroughly.
 - 3. Damp-mop flooring to remove marks and soil after time period recommended in writing by manufacturer.
- B. Protect flooring from mars, marks, indentations, and other damage from construction operations and placement of equipment and fixtures during remainder of construction period. Use protection methods recommended in writing by manufacturer.
 - 1. Do not move heavy and sharp objects directly over flooring. Protect flooring with plywood or hardboard panels to prevent damage from storing or moving objects over flooring.

PARTNERS 18-122
RESILIENT ATHLETIC FLOORING
096566 - 4

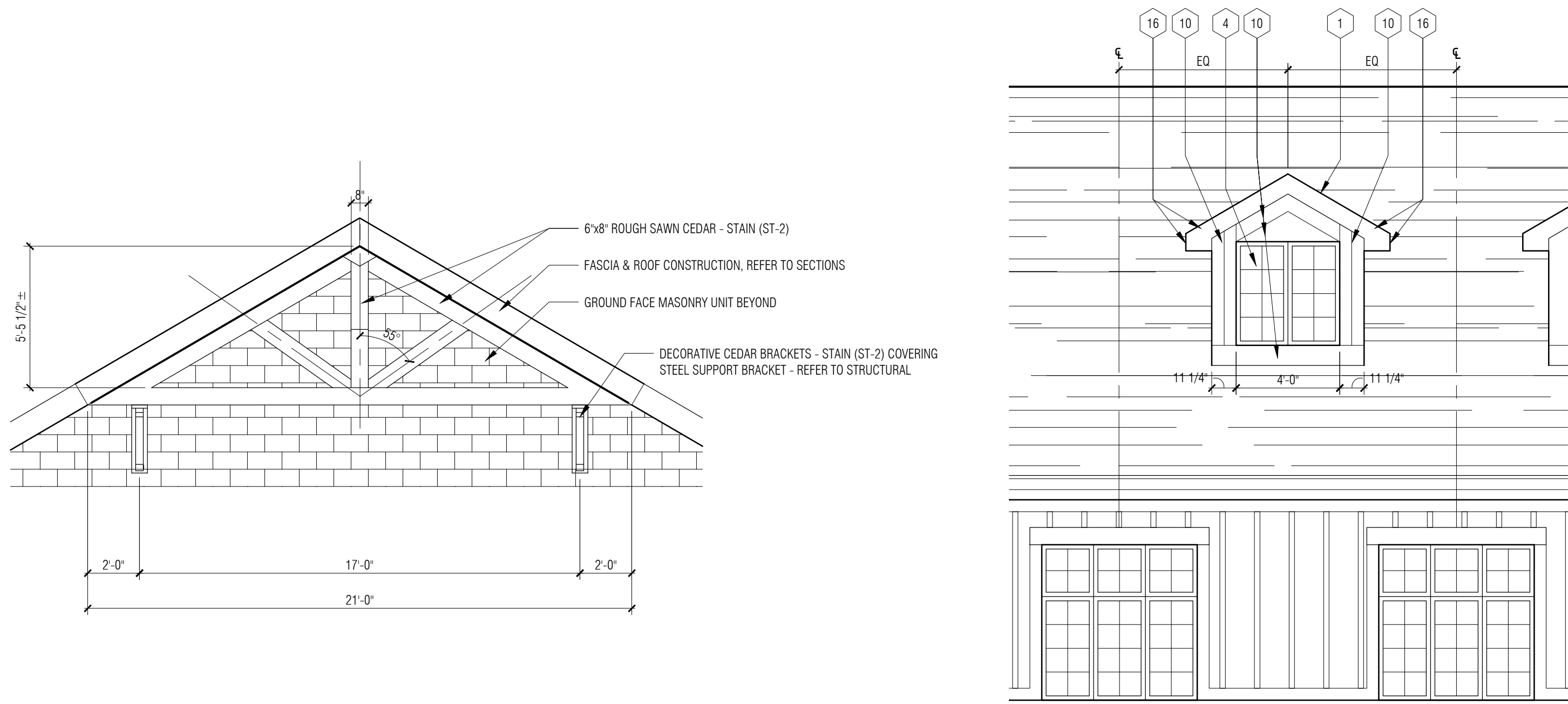
END OF SECTION 096566

EXTERIOR ELEVATIONS GENERAL NOTES:

- A. REFER TO MATERIAL FINISH / COLOR SCHEDULE (SPEC SECTION 000200) FOR ALL MATERIAL NOTES.

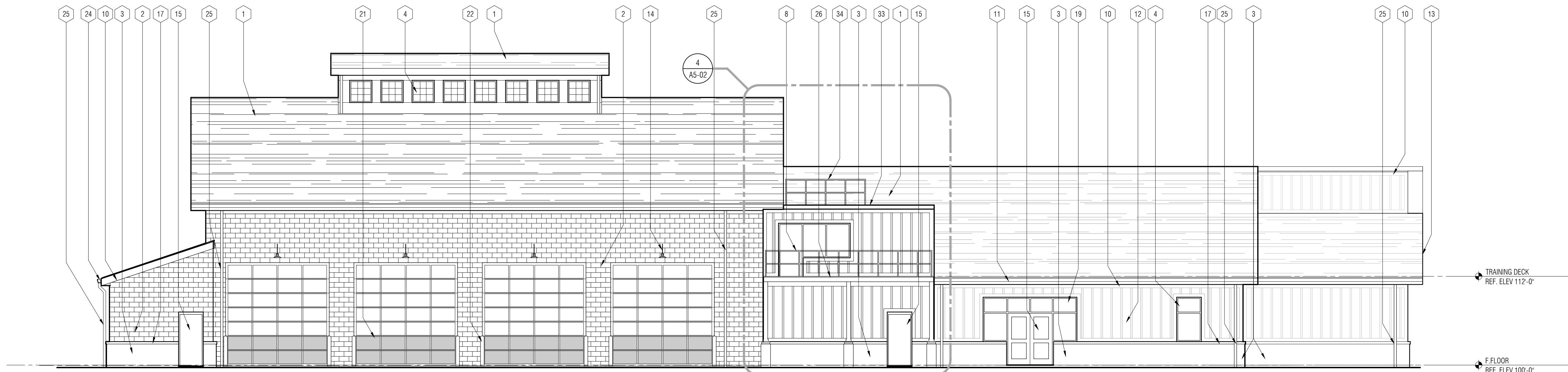
EXTERIOR ELEVATIONS KEY NOTES:

- 1 ASPHALT ROOF SHINGLES (ARS-1)
- 2 GROUND FACE MASONRY UNIT W/ CAVITIES FILLED W/ INSULATION (GFMU-1)
- 3 FULL BED DEPTH NATURAL STONE (STN-1)
- 4 ALUMINUM CLAD FIXED WOOD WINDOW - REFER TO SHEET A0-04.
- 5 CEDAR TIMBER TRUSS - REFER TO DETAIL 4/A5-01
- 6 WOOD-PLASTIC COMPOSITE LUMBER (CL-1)
- 7 WOOD-PLASTIC COMPOSITE LUMBER (CL-2)
- 8 PIPE GUARDRAIL ON BALCONY - ALTERNATE #3
- 9 METAL SOFFIT (MS-1)
- 10 FIBER-CEMENT TRIM BOARD (SD-3) - PAINT
- 11 ALUMINUM GUTTER (MRS-2) ON ALUMINUM FASCIA (MRS-1)
- 12 FIBER-CEMENT BOARD & BATTEN SIDING (SD-1 & SD-2) - PAINT
- 13 FIBER-CEMENT SOFFIT (SD-4) - PAINT
- 14 GOOSENECK LIGHT FIXTURE - SEE ELECTRICAL
- 15 DOOR AND FRAME AS SCHEDULED - REFER TO SHEET A0-04
- 16 ALUMINUM FASCIA (MRS-1)
- 17 CAST STONE SILL (CS-1)
- 18 MECHANICAL UNIT - REFER TO MECH.
- 19 ALUMINUM STOREFRONT WINDOW AS SCHEDULED - REFER TO SHEET A0-04
- 20 ALUMINUM STOREFRONT WINDOW W/ MULLIONS AS SCHEDULED - REFER TO SHEET A0-04
- 21 BASE BID: INSULATED OVERHEAD DOORS - REFER TO SHEET A0-04
ALTERNATE #1: FOUR-FOLD DOORS, REFER TO 012300 - ALTERNATES
- 22 6" CONCRETE FILLED BOLLARD
- 23 BIRD'S BEAK ROOF OVERHANG
- 24 6" BOX CHAMFER METAL GUTTER (MRS-2)
- 25 METAL DOWNSPOUT DRAIN TO GROUND LEVEL (MRS-2)
- 26 PRESSURE TREATED WOOD DECKING - ALTERNATE #3
- 27 SCUPPER, REF 3/A3-31
- 28 MANUAL MECH. VENT - REFER TO MECH.
- 29 THIN VENEER STONE (STN-2)
- 30 LINE OF TRANSITION OF FULL DEPTH TO VENEER STONE - REFER TO DETAIL
- 31 BACKLIT METAL CHANNEL LETTERS - REFER TO SPECIFICATIONS TO SIZING
- 32 LOUVERED VENT
- 33 REFER TO ROOF PLAN A3-30 FOR SINGLE-PLY ROOFING
- 34 GUARD RAIL SECURED TO FLAT ROOF SYSTEM TO MEET OSHA REQUIREMENTS
- 35 LOUVER VENT - ALIGN WITH BLOCK COURSING



4
A5-01
Decorative King Post Bracket Elevation
1/4" = 1'-0"

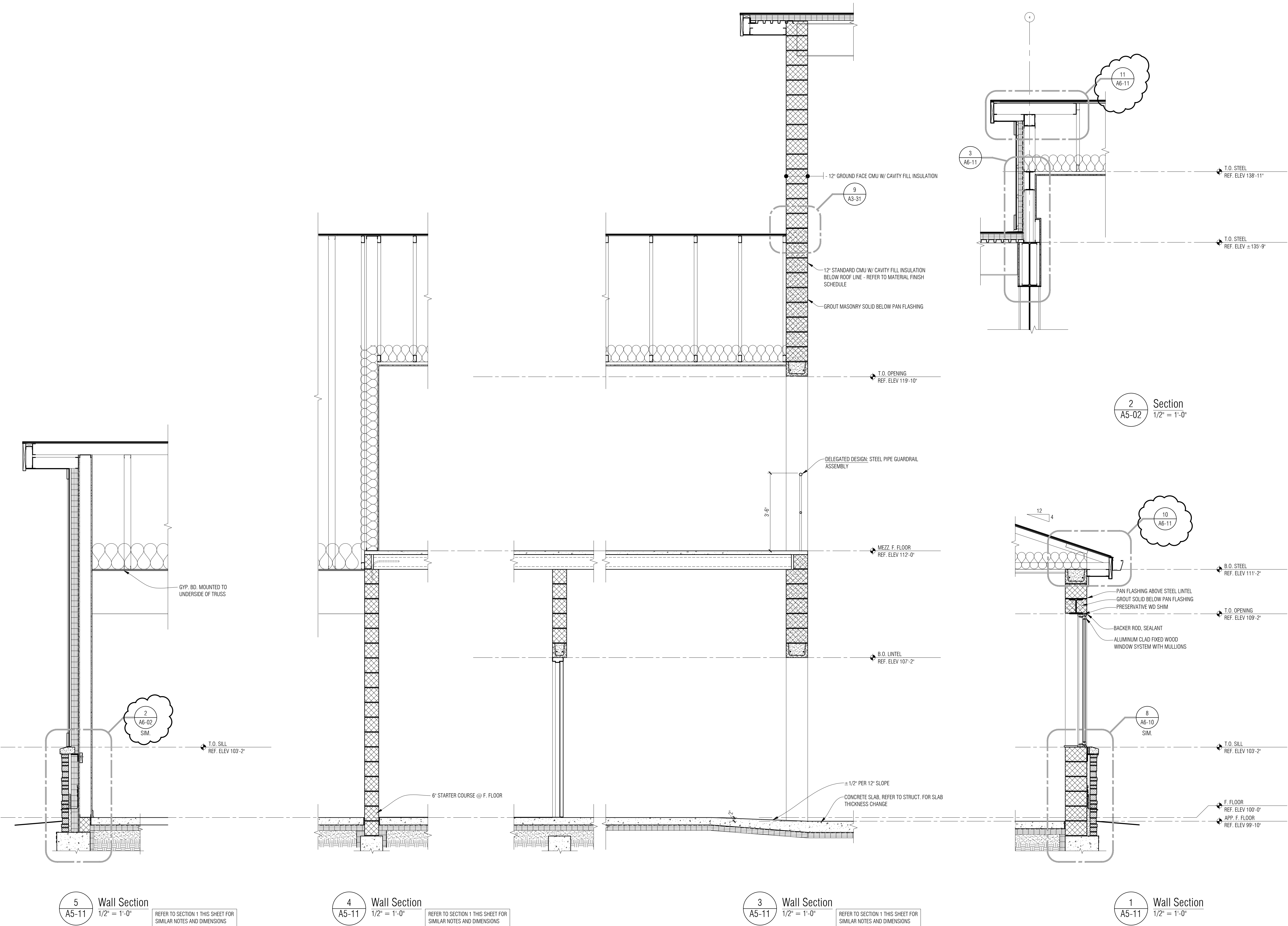
3
A5-01
Typ. Dormer Elevation
1/4" = 1'-0"

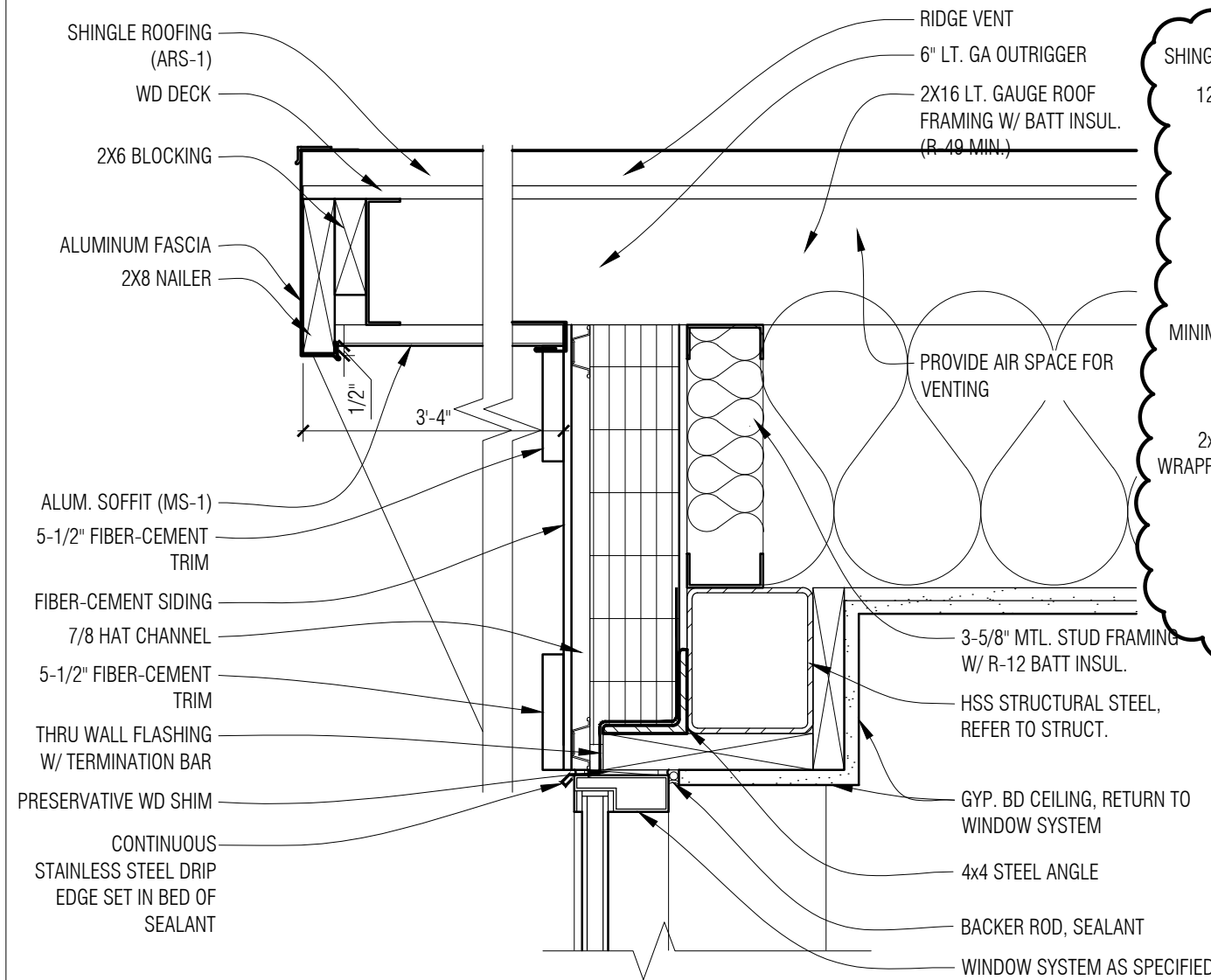


2
A3-01
North Elevation
1/8" = 1'-0"

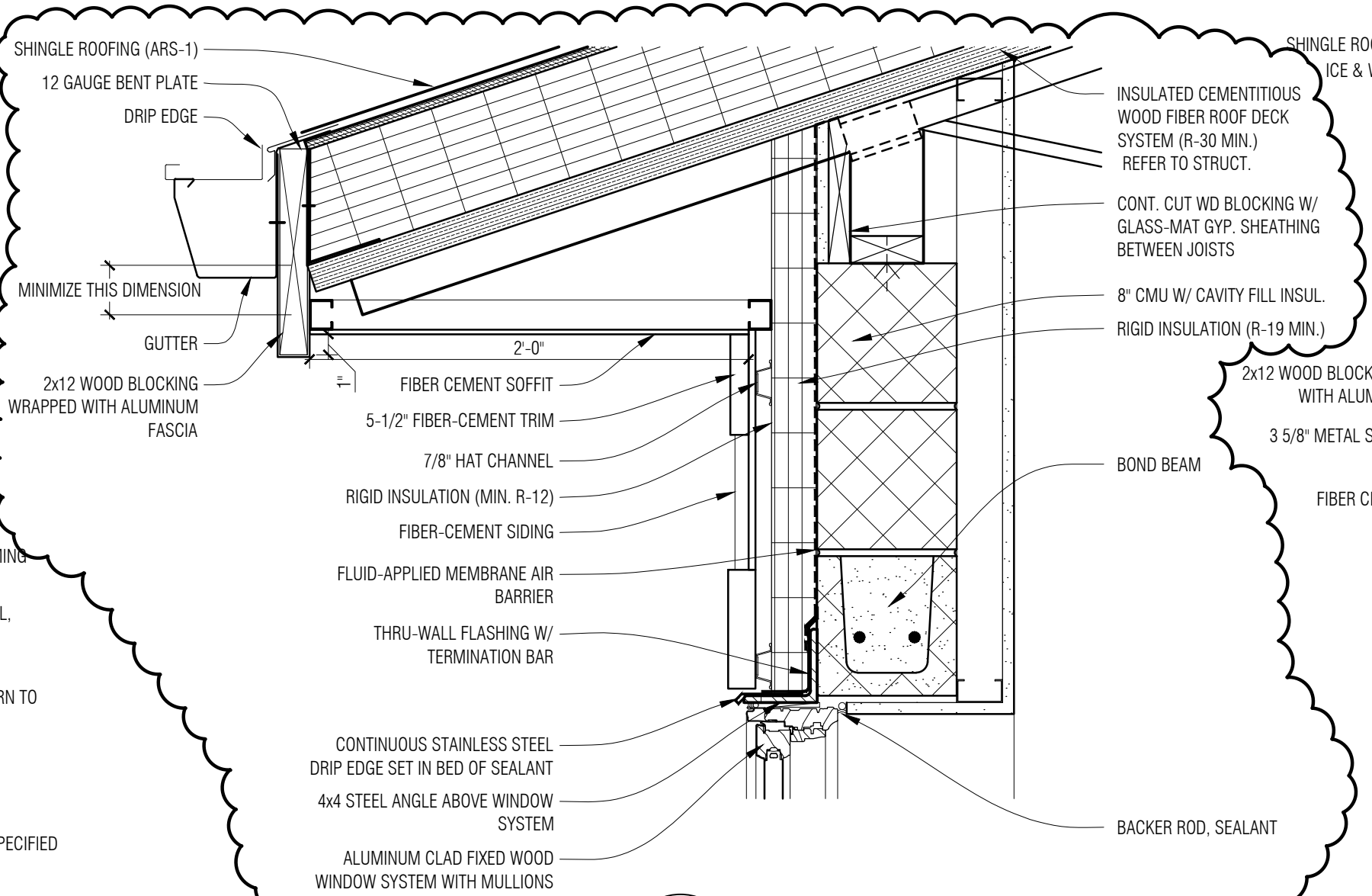


1
A3-01
South Elevation
1/8" = 1'-0"

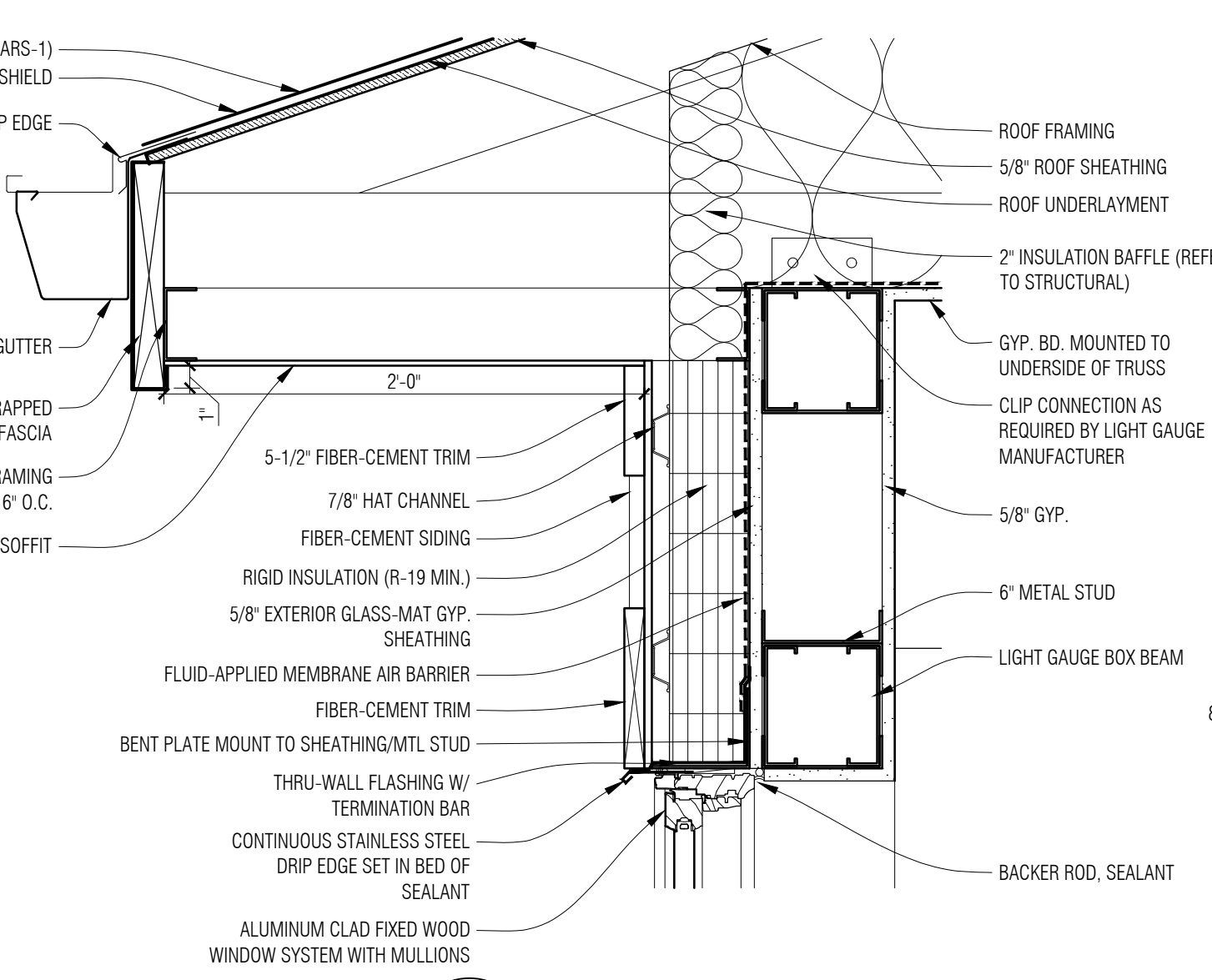




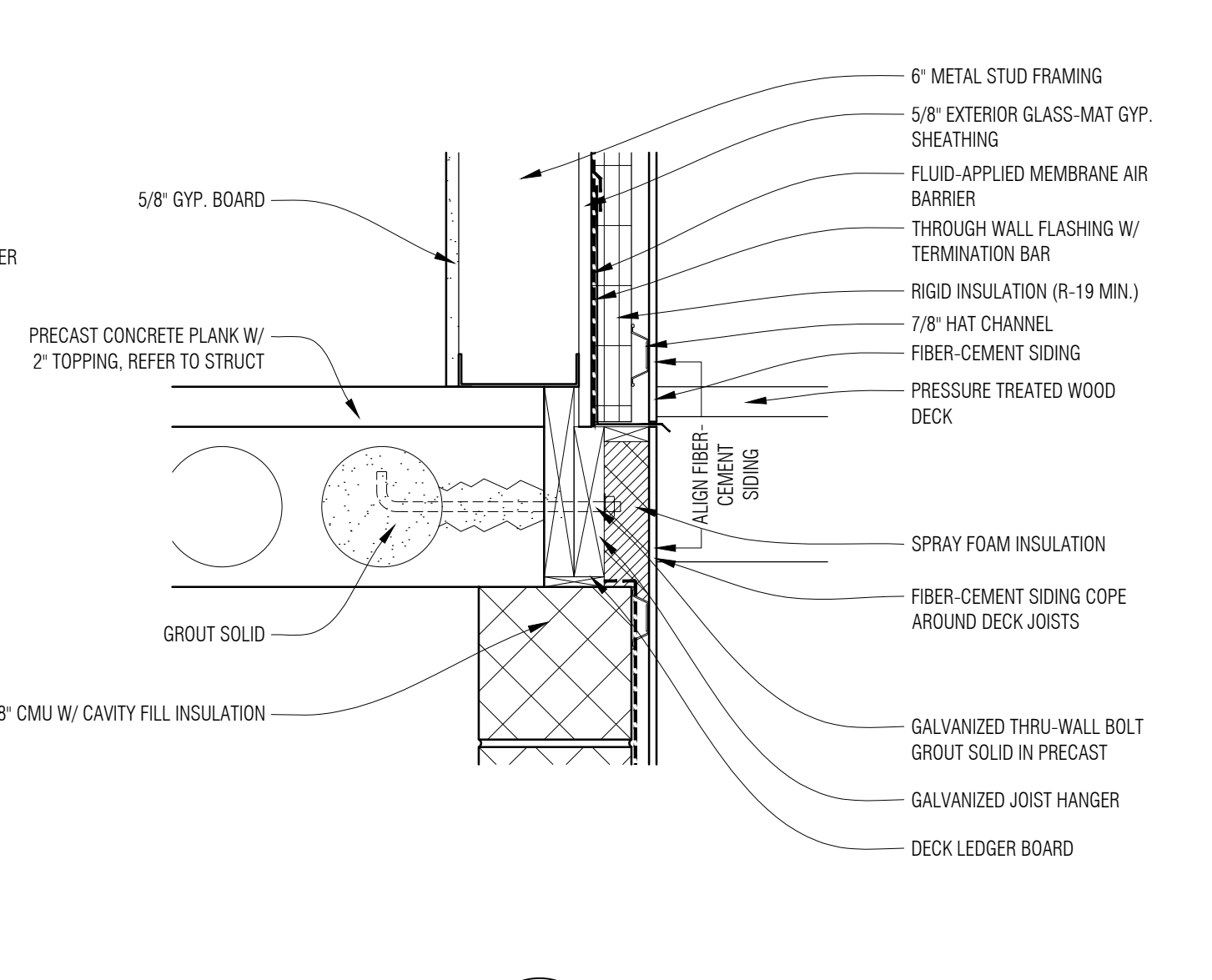
12 Detail
1-1/2" = 1'-0"



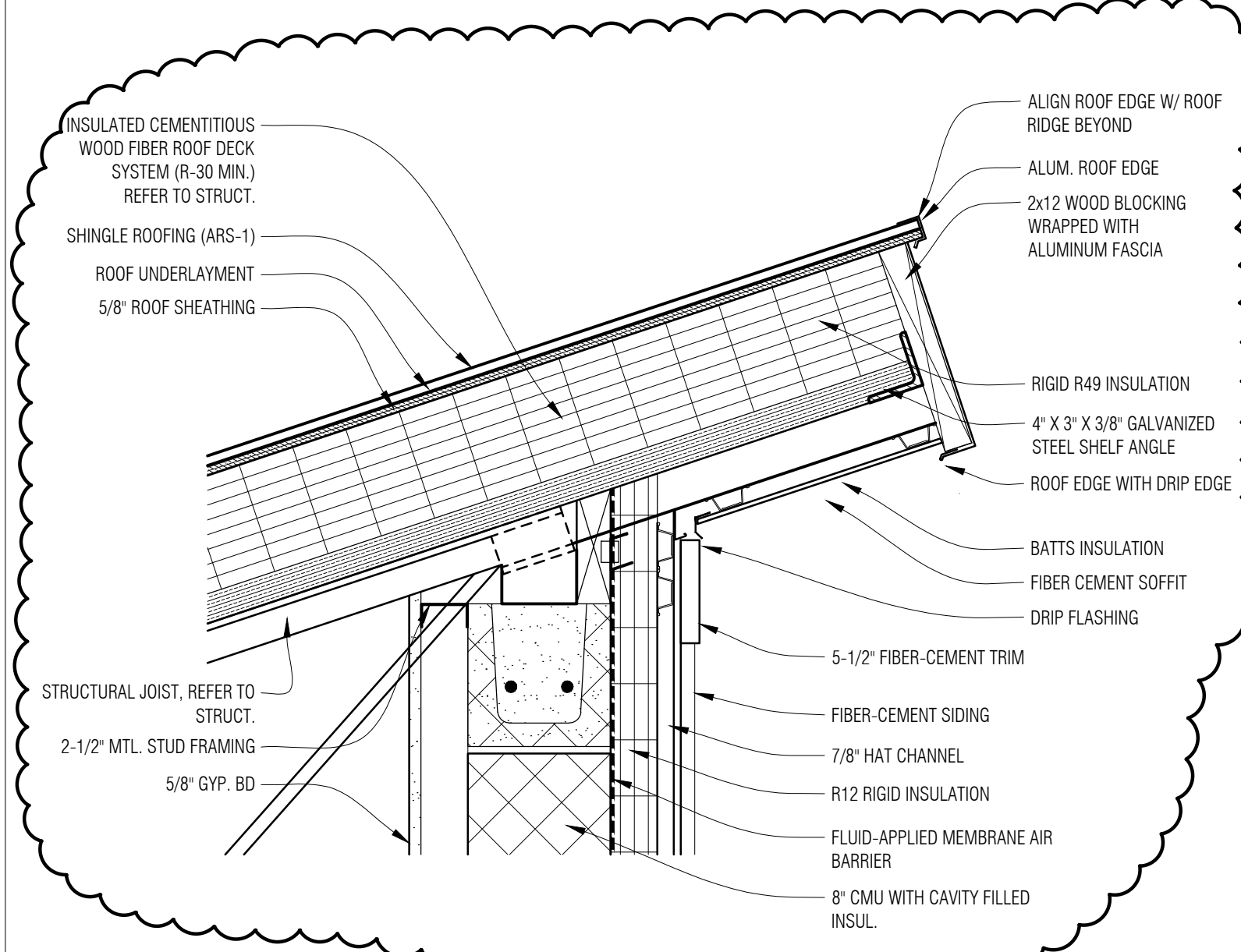
9 Detail
1-1/2" = 1'-0"



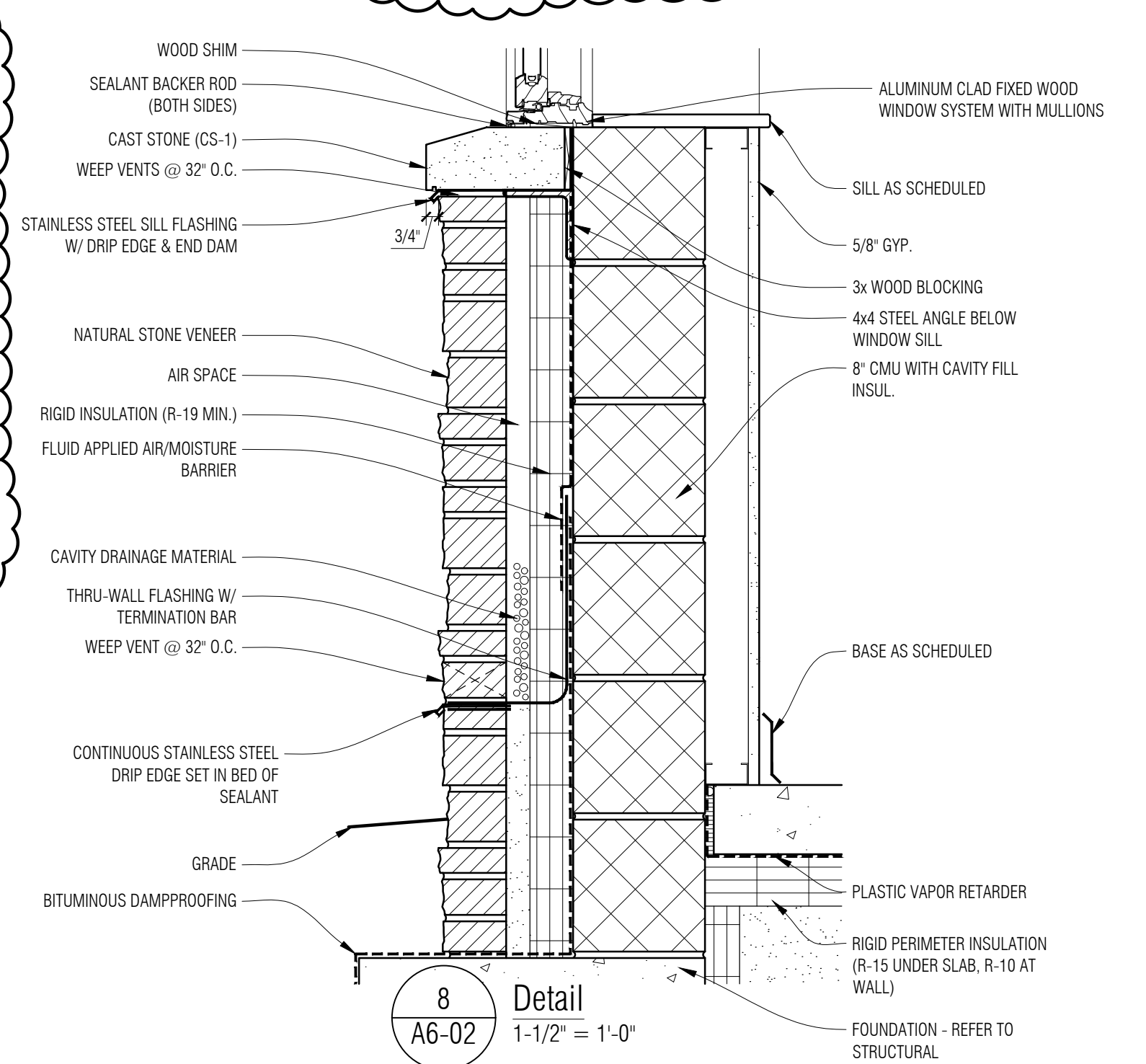
6 Detail
1-1/2" = 1'-0"



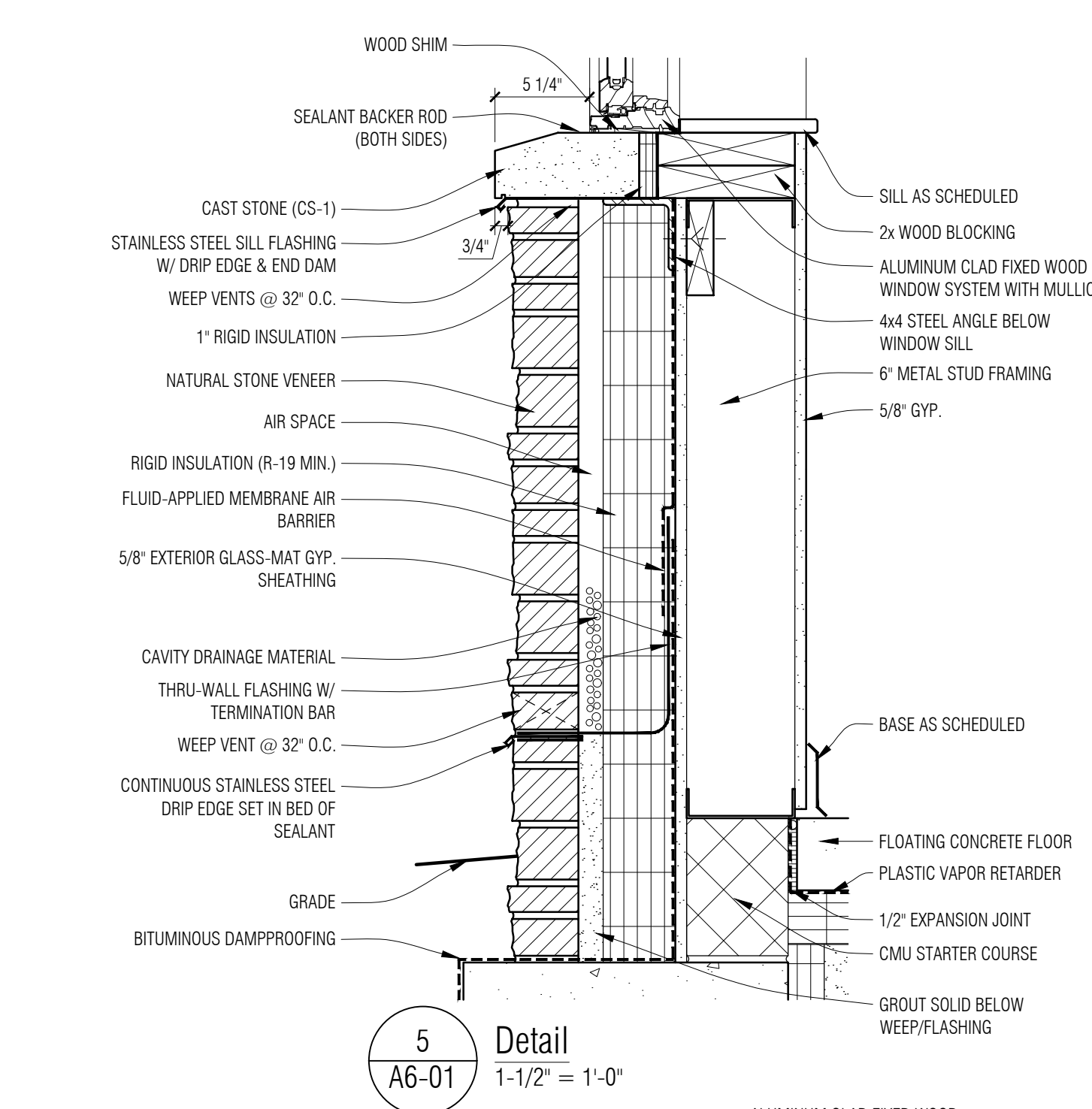
3 Detail
1-1/2" = 1'-0"



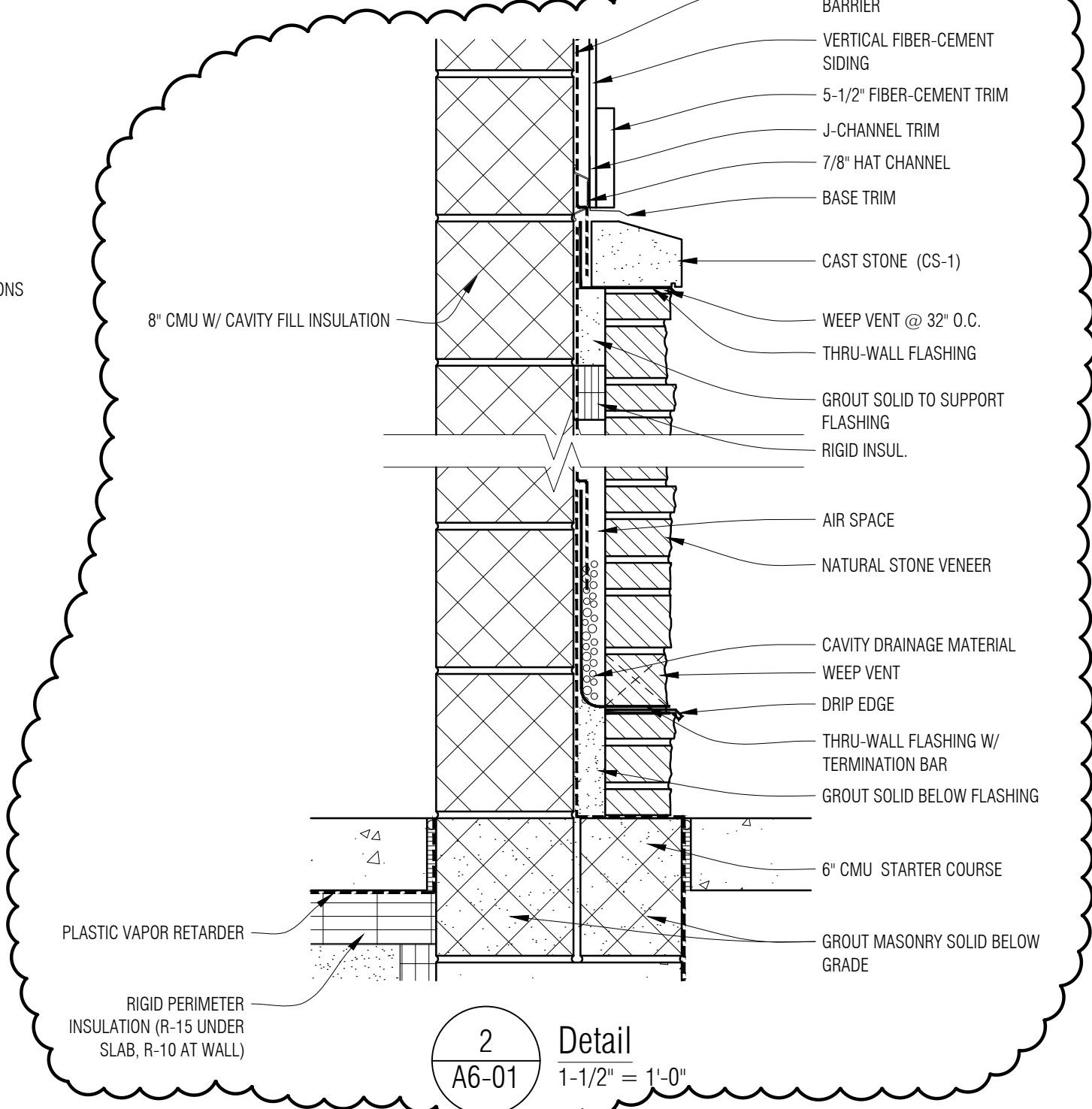
11 Detail
1-1/2" = 1'-0"



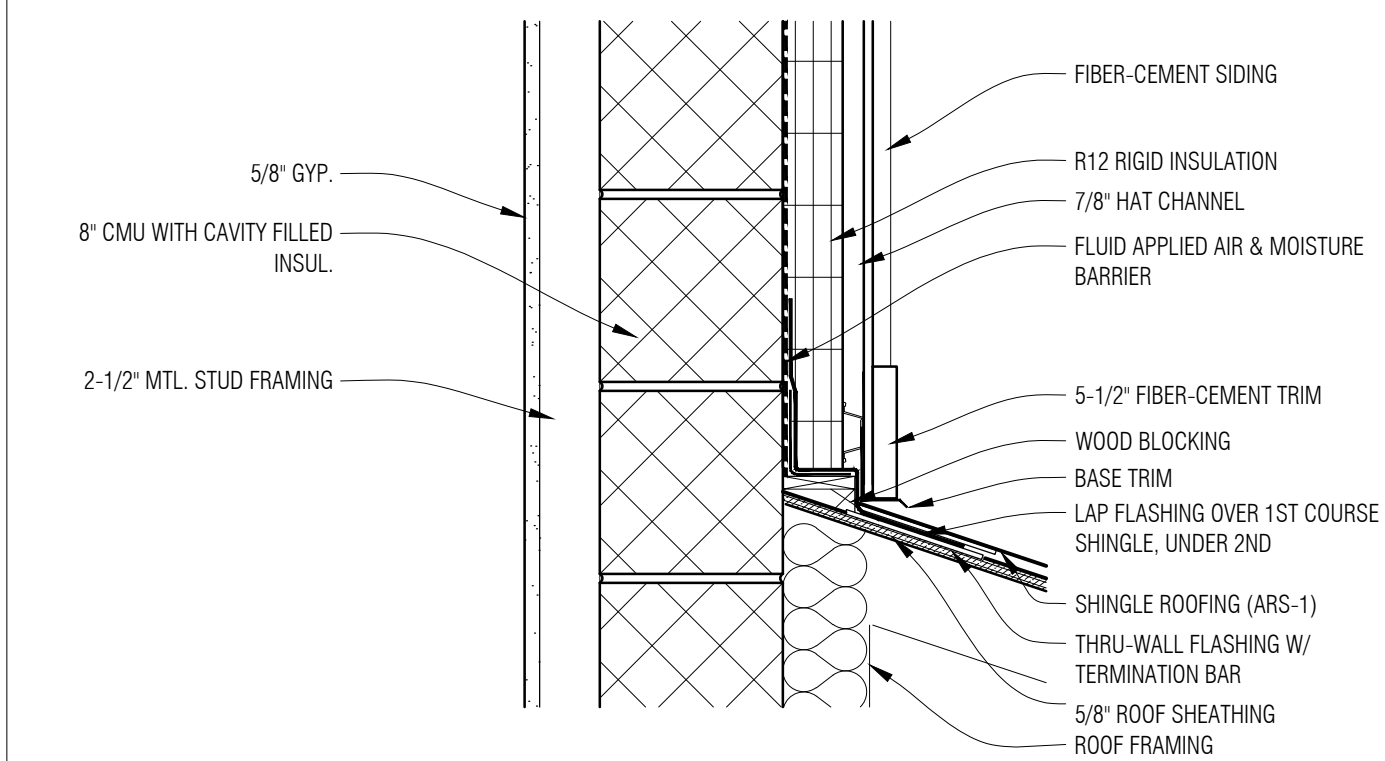
8 Detail
1-1/2" = 1'-0"



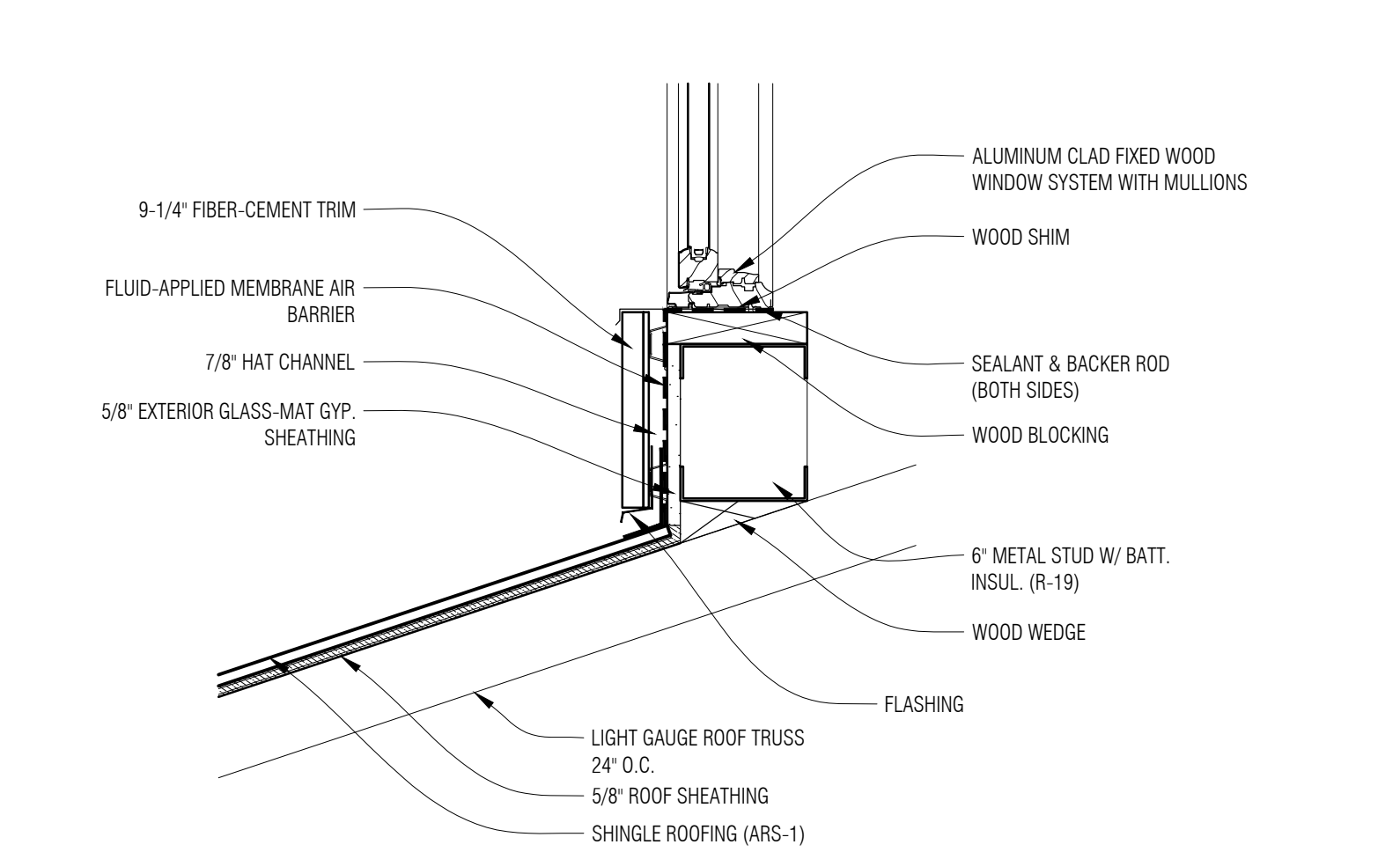
5 Detail
1-1/2" = 1'-0"



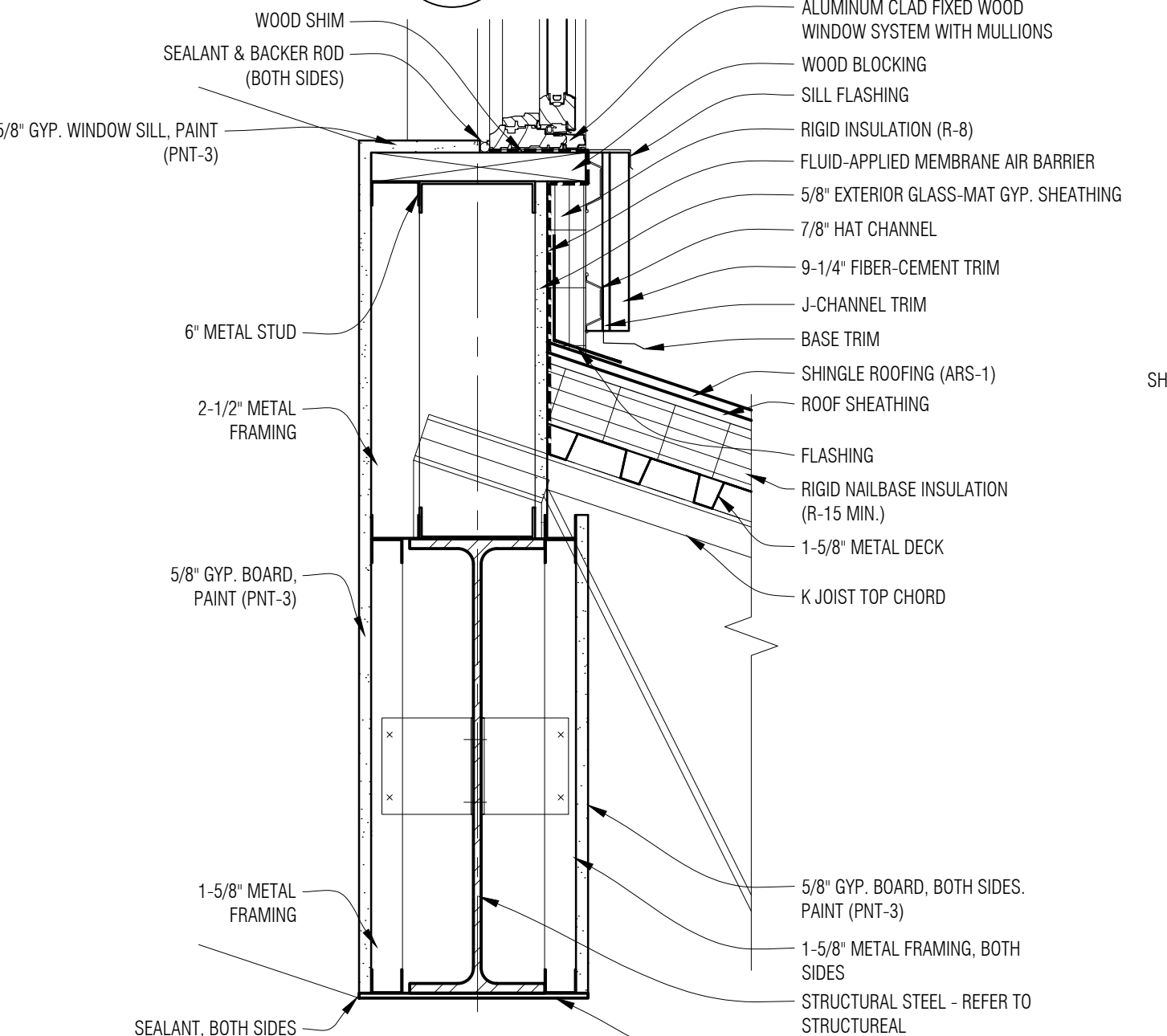
2 Detail
1-1/2" = 1'-0"



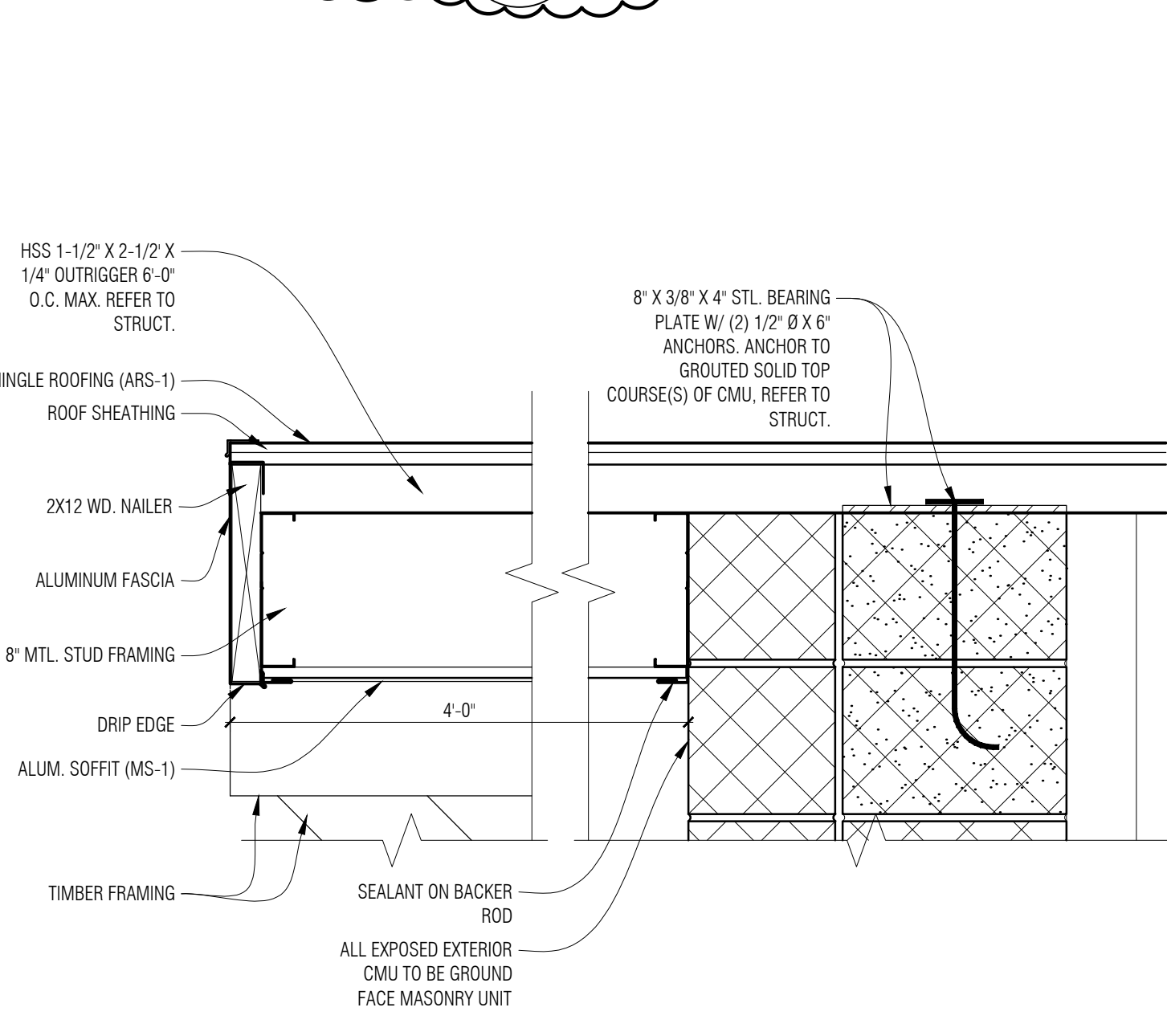
10 Detail
1-1/2" = 1'-0"



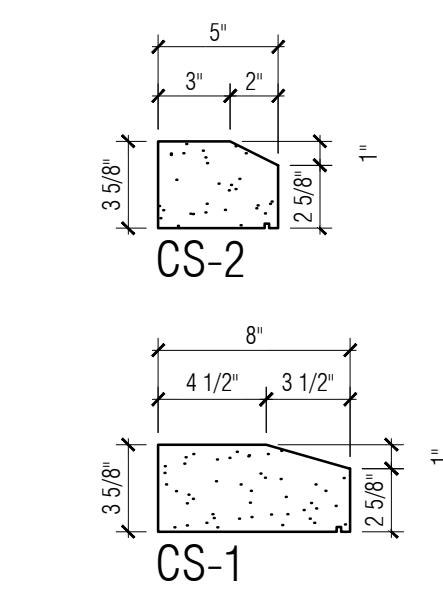
7 Detail
1-1/2" = 1'-0"



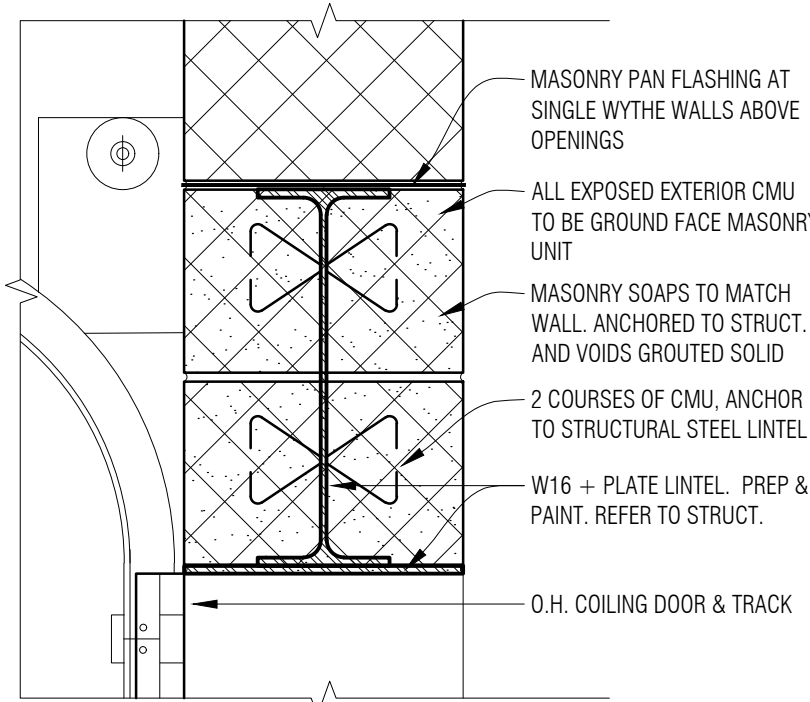
4 Detail
1-1/2" = 1'-0"



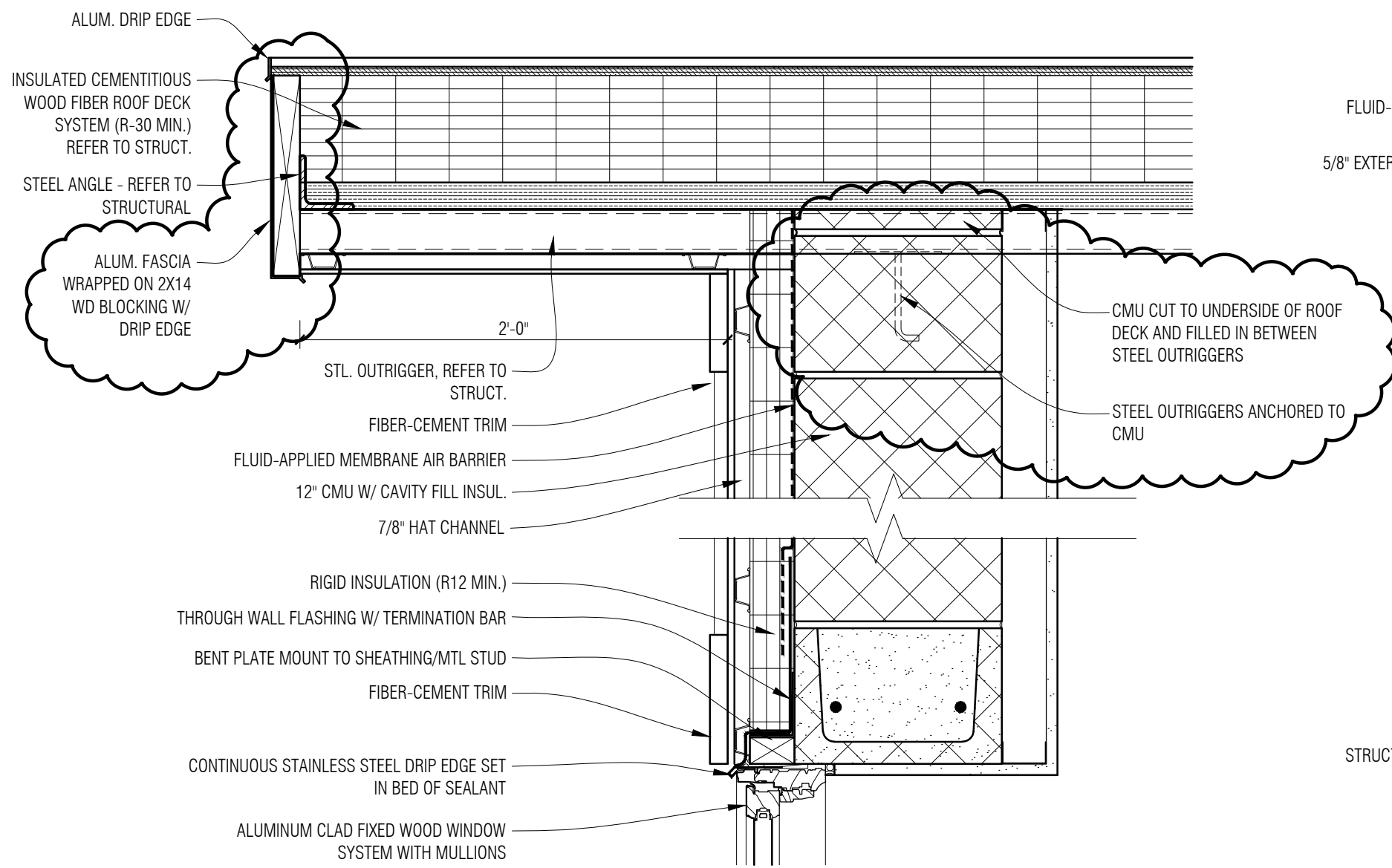
1 Detail
1-1/2" = 1'-0"



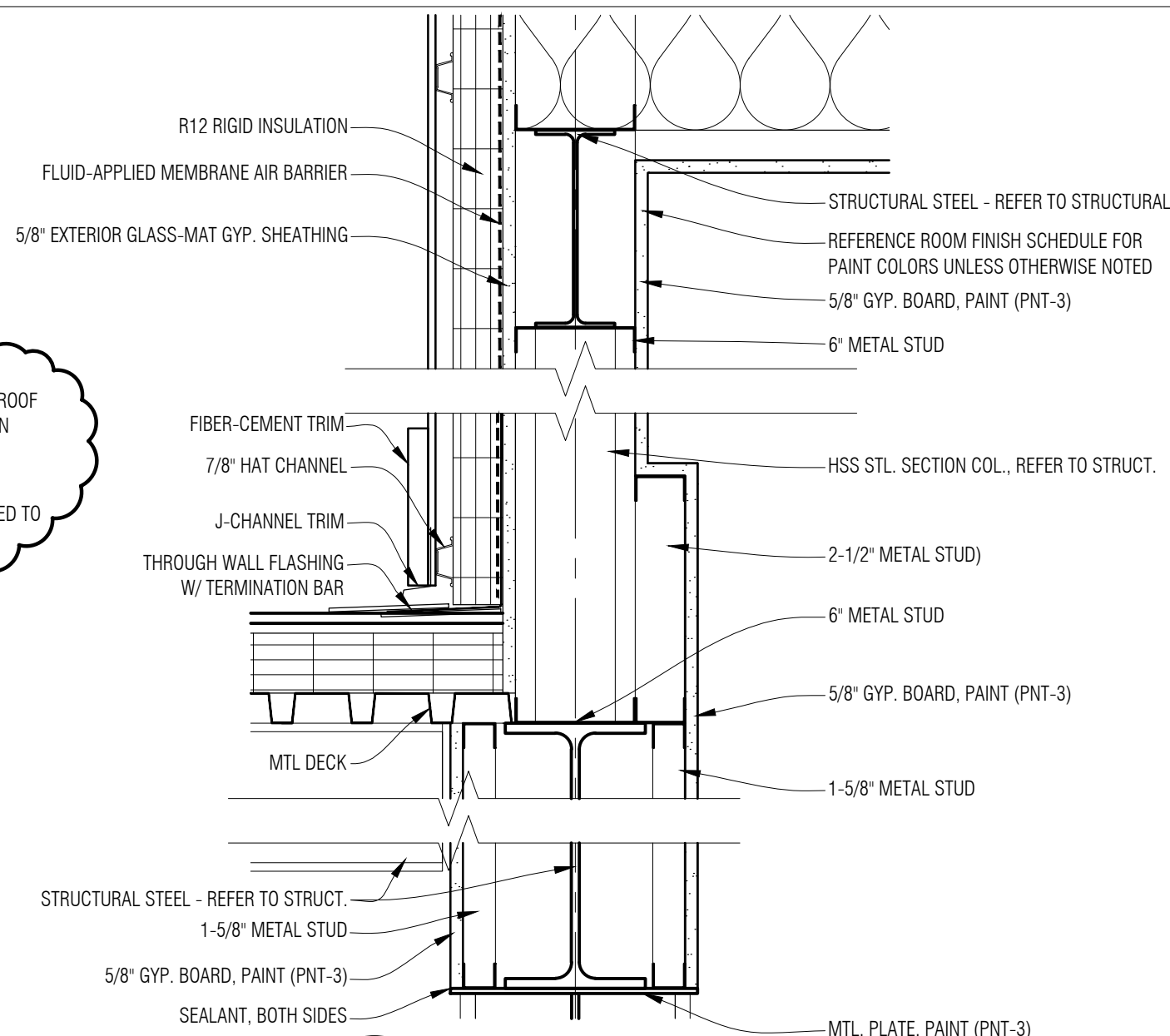
Sill Profiles
1-1/2" = 1'-0"



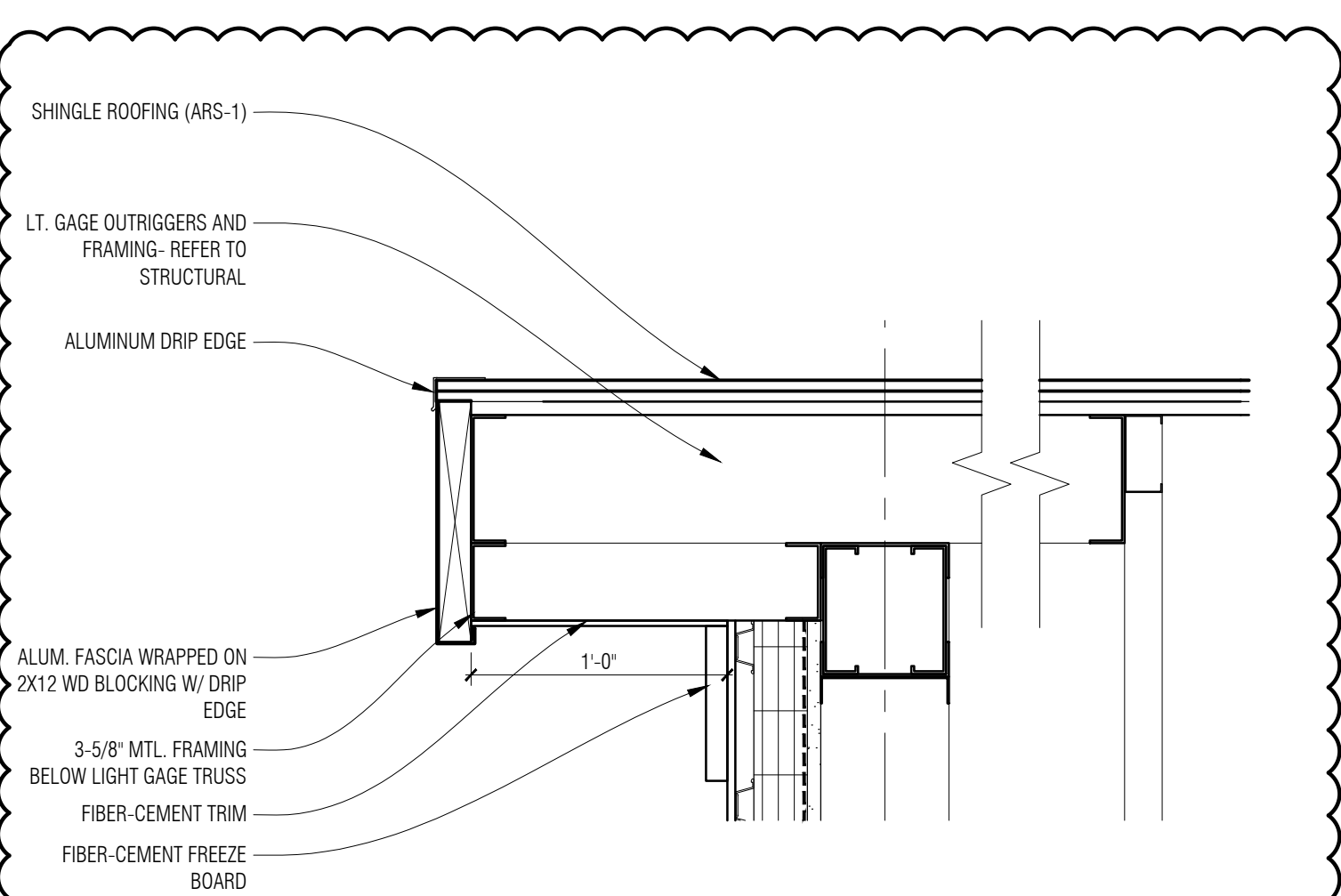
9 Detail
A6-11
1-1/2" = 1'-0"



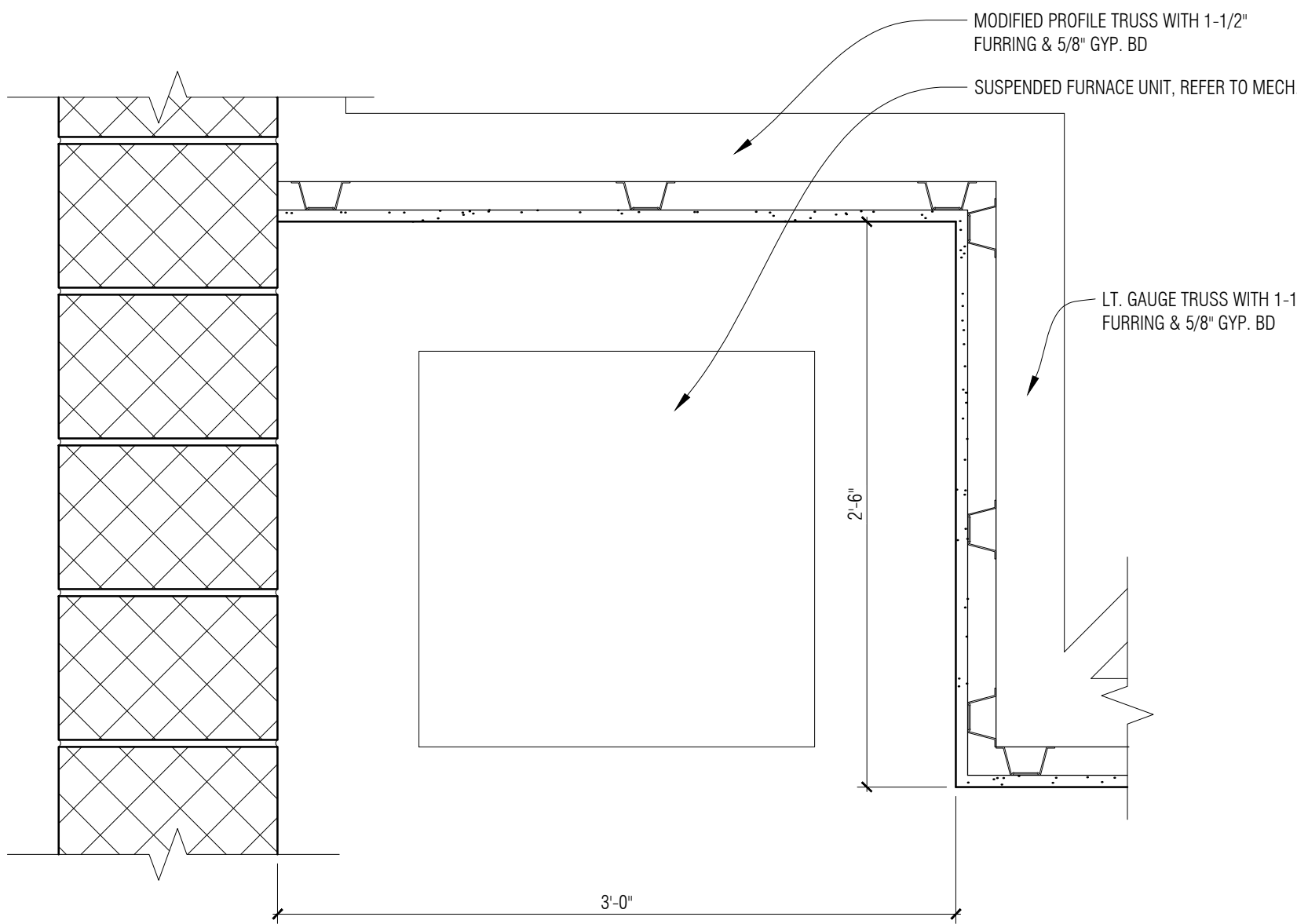
6 Detail
A6-11
1-1/2" = 1'-0"



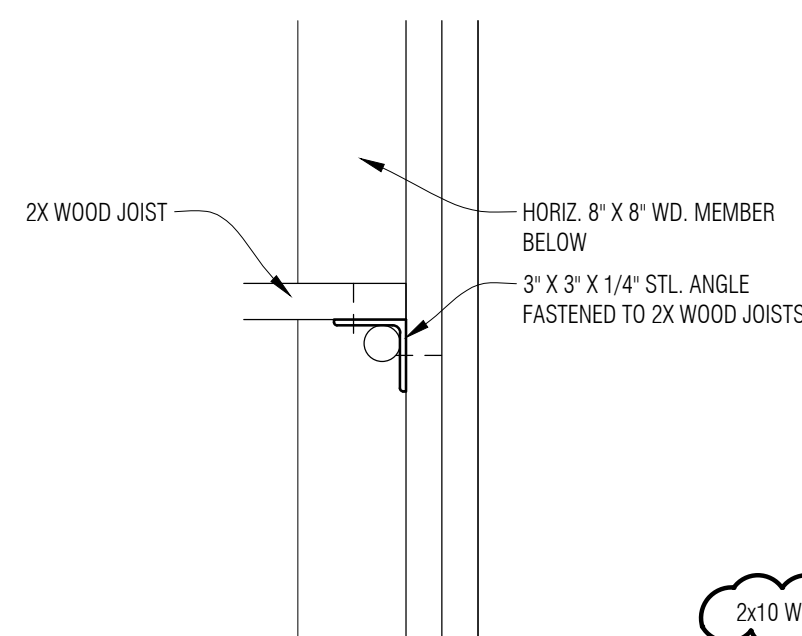
3 Detail
A6-04
1-1/2" = 1'-0"



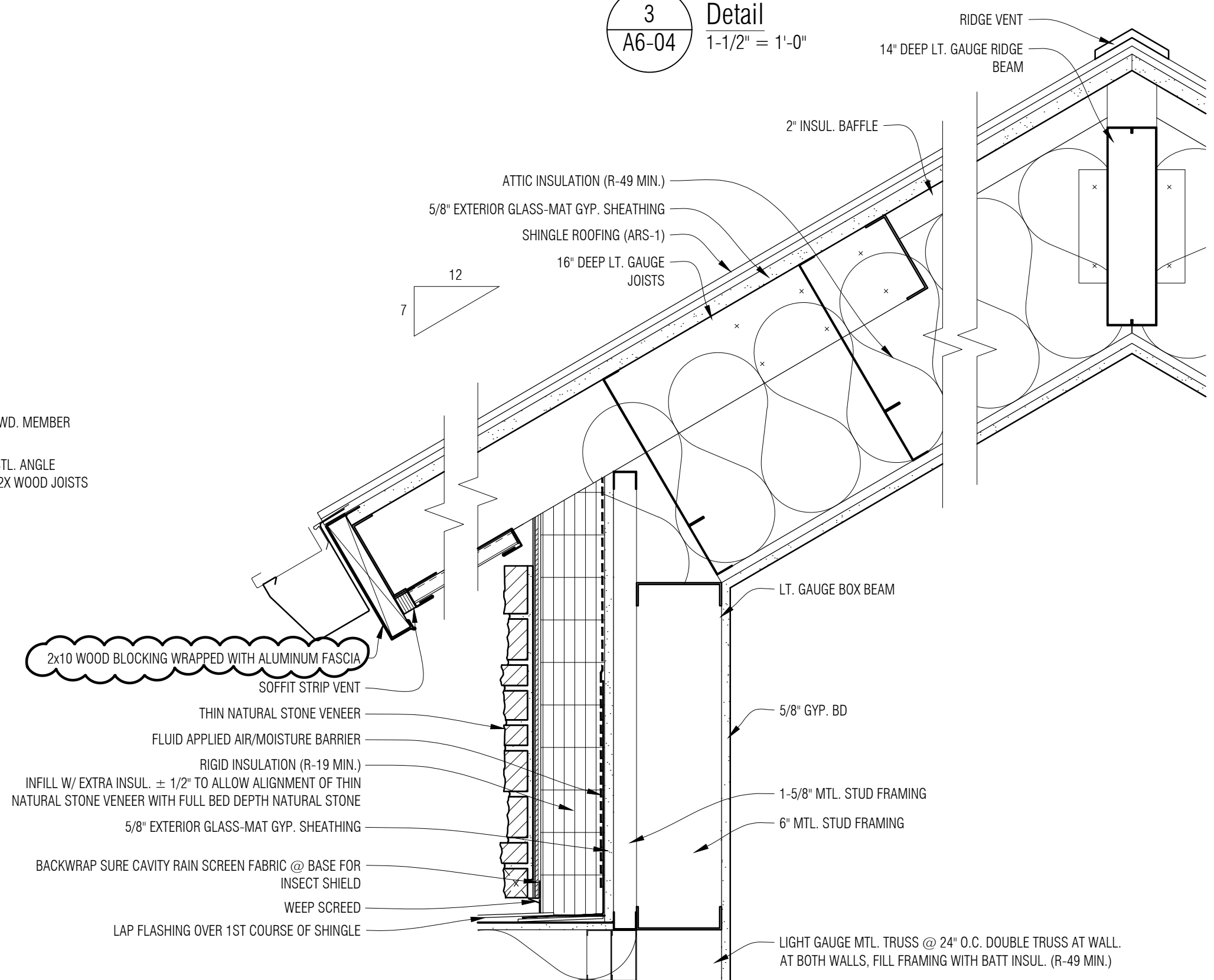
11 Detail
A6-04
1-1/2" = 1'-0"



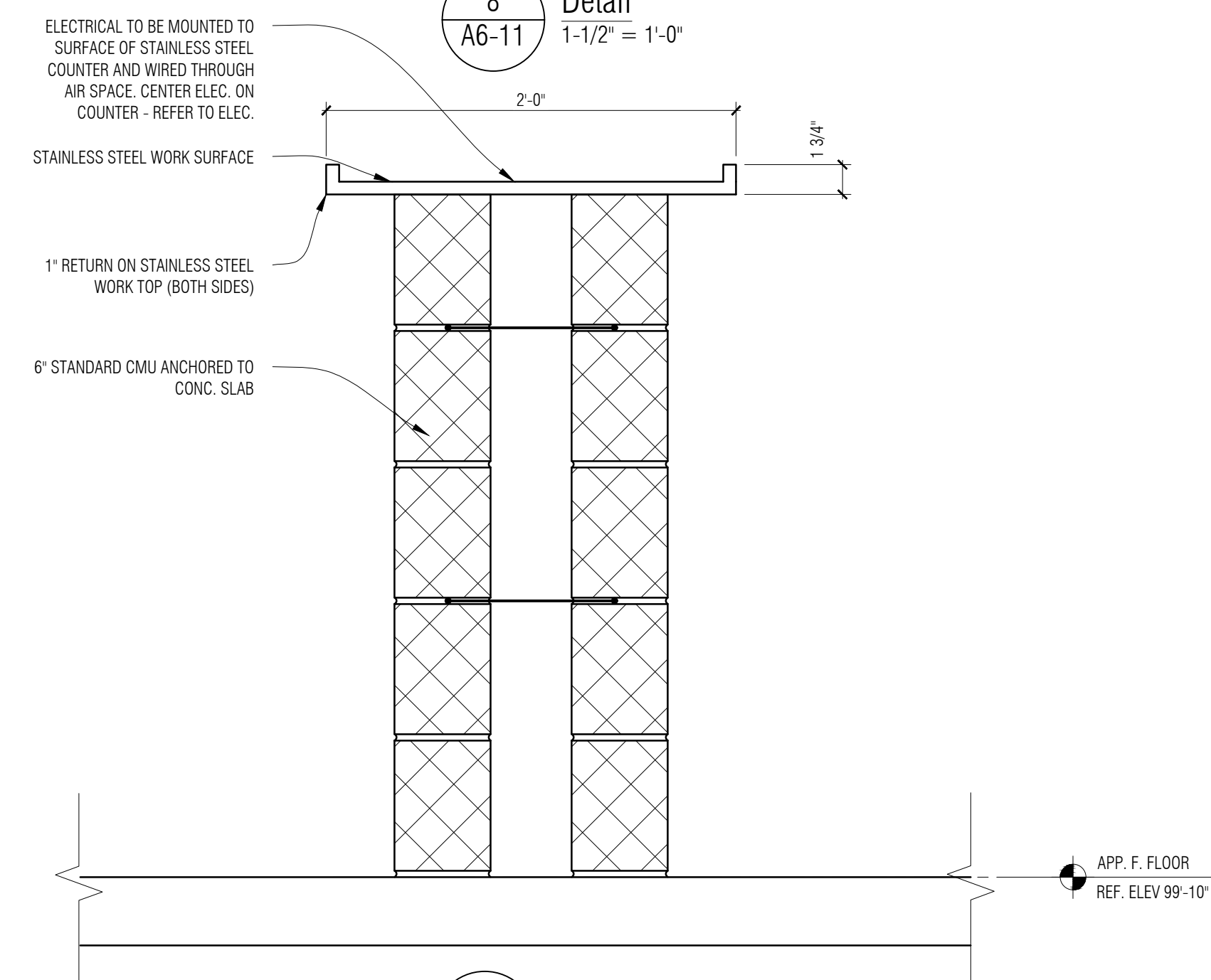
8 Detail
A6-11
1-1/2" = 1'-0"



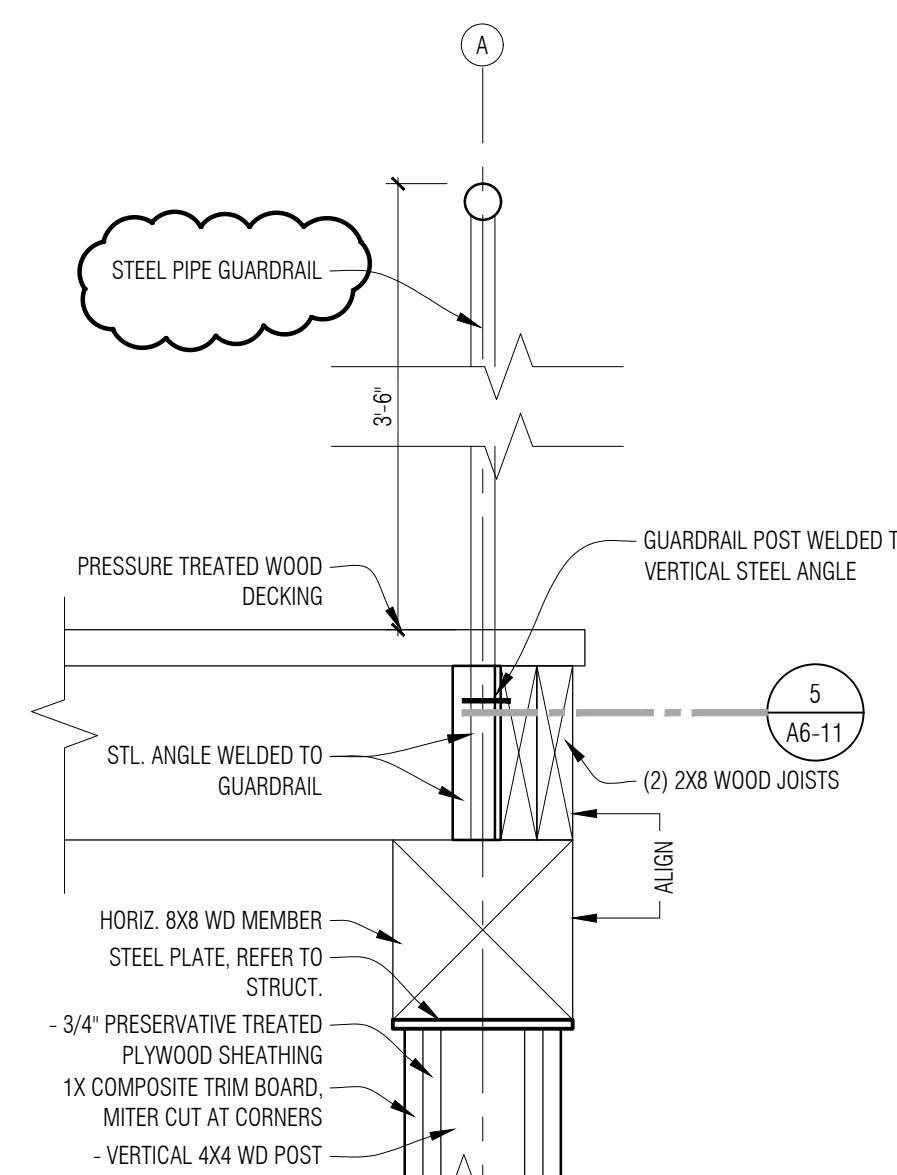
5 Detail
A6-11
1-1/2" = 1'-0"



2 Detail
A6-03
1-1/2" = 1'-0"

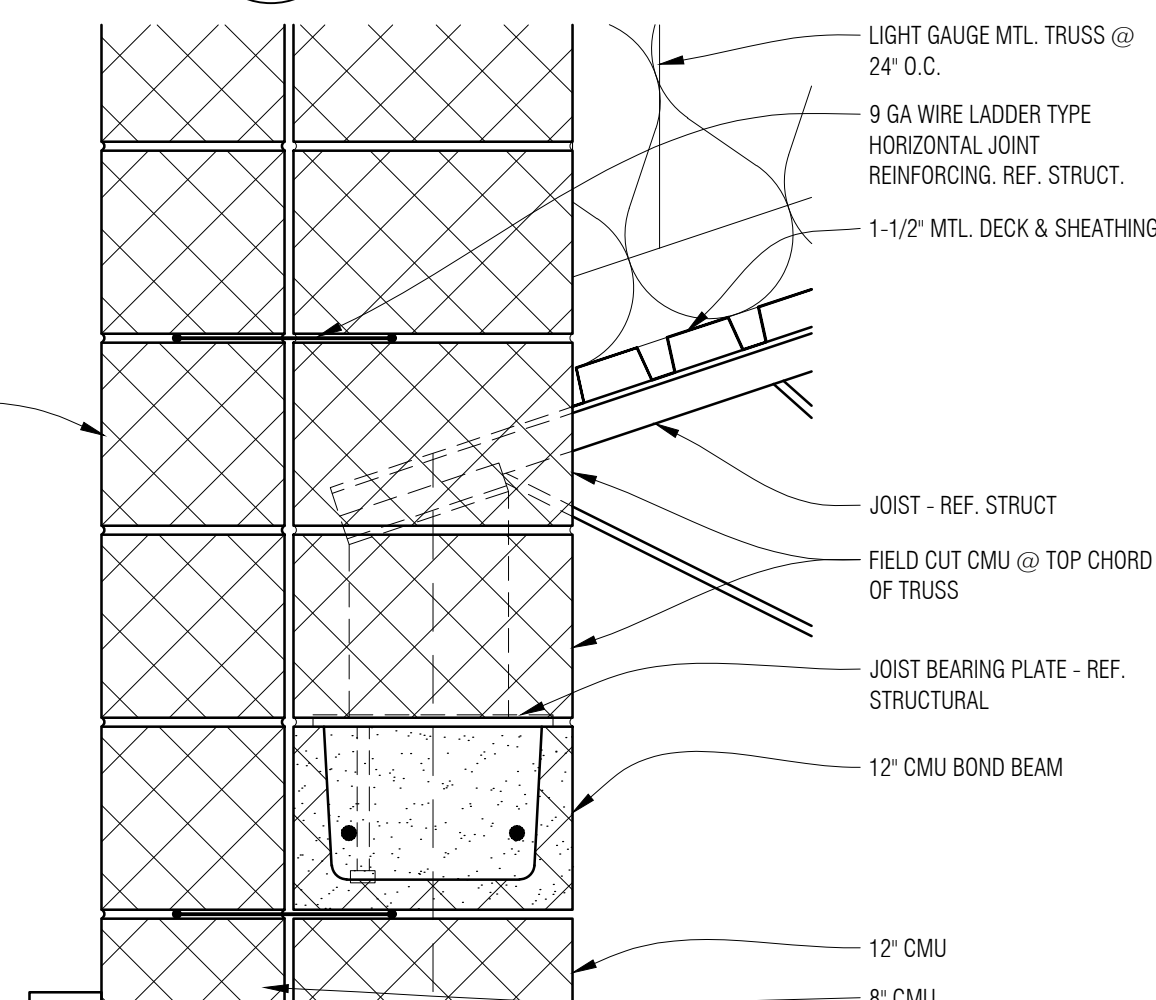


7 Detail
A6-11
1-1/2" = 1'-0"



4 Detail - Alternate #3
A6-01
1-1/2" = 1'-0"

ALL EXPOSED EXTERIOR CMU TO BE GROUND FACE MASONRY UNIT



1 Detail
A6-01
1-1/2" = 1'-0"

10 Detail
A6-04
1-1/2" = 1'-0"