







191 WEST SQUARE LAKE ROAD  
BLOOMFIELD HILLS MICHIGAN 48302  
PH 248.388.4561 FX 248.388.0223  
EM 482.4307 TMP-ARCHITECTURE.COM



REGISTRATION SEAL

CONSULTANT



EF WHITNEY INC  
FOOD SERVICE DESIGN CONSULTANTS  
1000 S. OLD WOODWARD  
SUITE 105  
BIRMINGHAM, MI 48209  
248.644.0950  
www.efwhitney.com

PROJECT TITLE  
**New High Point School**  
**Washtenaw Intermediate School District**  
1735 South Wagner Road  
Ann Arbor, Michigan

DRAWING TITLE  
**Food Service Equipment Electrical Rough in Plan**

ISSUE DATES

DATE	ISSUED FOR
05.27.2020	FOR CONSTRUCTION - BID PACK 3
04.30.2020	95% BID PACK #3 CD REVIEW
12.4.2019	DESIGN DEVELOPMENT

DATE: ISSUED FOR:  
DRAWN: R. Whitney  
CHECKED: ...  
APPROVED: ...

PROJECT NO.  
**19040D**  
DRAWING NO.  
**FSE-3-BP3**

GENERAL NOTES for ROUGH-IN PLAN

THIS PLAN IS TO BE USED FOR BIDDING PURPOSES ONLY & MUST BE REDRAWN BY FOOD SERVICE EQUIP. CONTR. USING ARCHITECTS FINAL WORKING DRAWINGS (ARCH. ELECT., PLUMB. & VENT.). F.S.E. CONTR. SHALL FURNISH FULLY DIMENSIONED ROUGH-IN PLAN FOR ELECTRICAL, PLUMBING, VENTILATION DEPRESSION & WALL OPENINGS WITHIN 30 DAYS AFTER AWARD OF CONTRACT. PLANS ARE TO BE REDRAWN & NOT TRACED-OFF OF ORIGINAL DRAWINGS.

FOOD SERVICE EQUIP. CONTR. IS TO ASSIST ELECTRICAL TRADES DURING PERIOD WHILE FINAL ROUGH-IN CONNECTIONS ARE BEING MADE. F.S.E.Q. CONTR. SHALL FURNISH ALL NECESSARY WIRING DETAILS AS REQUIRED. F.S.E.Q. CONTR. ALSO TO HAVE FIELD SUPERVISOR ON JOBSITE AT TIME OF FINAL CONN'S.

FOOD SERVICE EQUIP. CONTR. SHALL CONTACT ELECTRICAL ENGINEER BEFORE DRAWING ROUGH-PLAN TO VERIFY EXACT VOLTAGES AVAILABLE ON JOBSITE. THIS CHECK MUST BE MADE TO INSURE PROPER VOLTAGES TO ALL EQUIPMENT.

GENERAL NOTE for ROUGH-IN PLAN

ALL SERVICES SHOWN WITH SYMBOLS CENTERED ON WALL SHOULD BE BROUGHT TO THAT POINT CONCEALED IN WALL & STUBBED-OUT AT HEIGHT SHOWN ON THIS PLAN OR F.S.E.Q. CONTR'S FINAL DIMENSIONED ROUGH-IN PLAN. DO NOT STUB OUT OF FLOOR & RUN EXPOSED ON WALL.

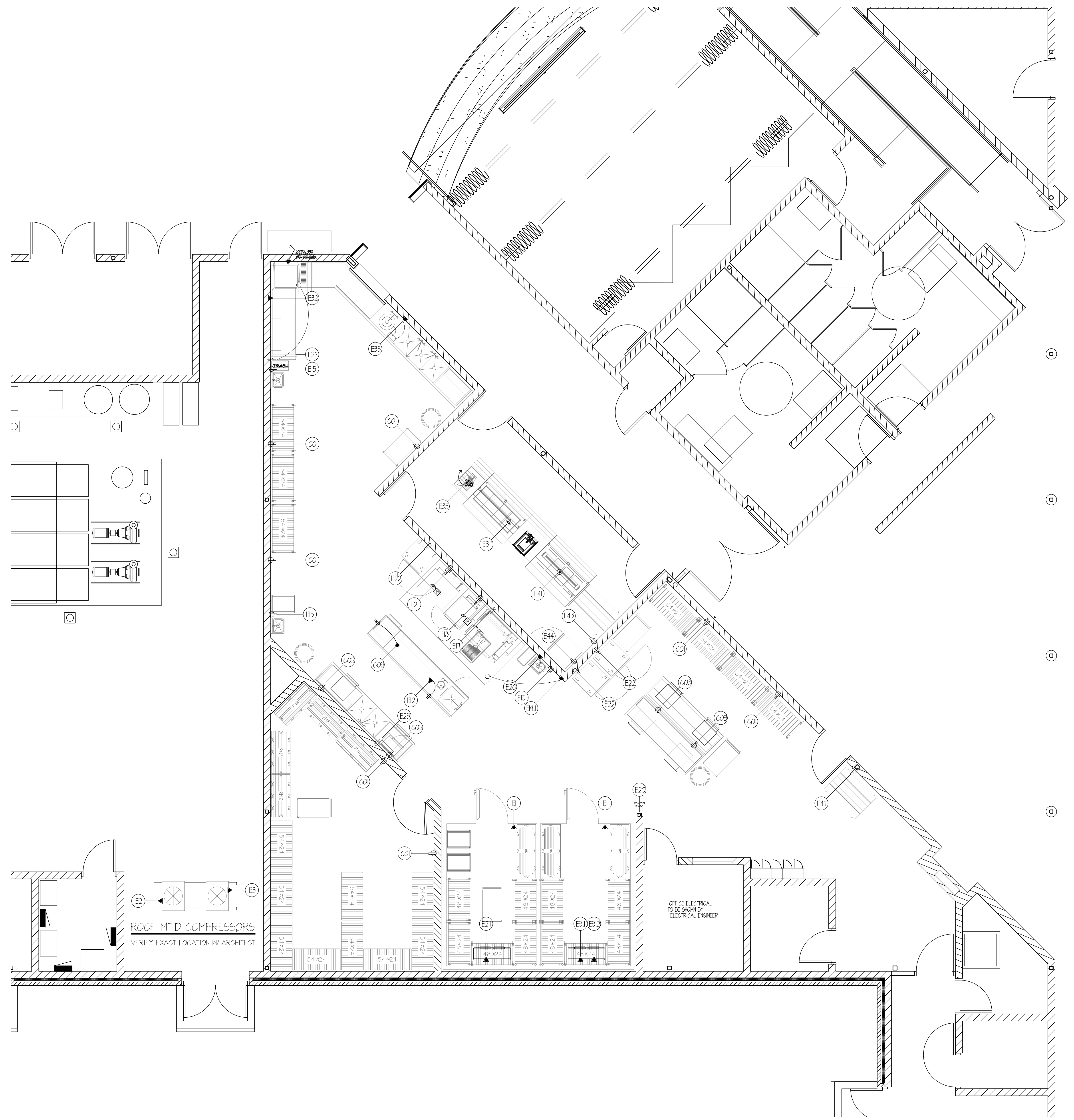
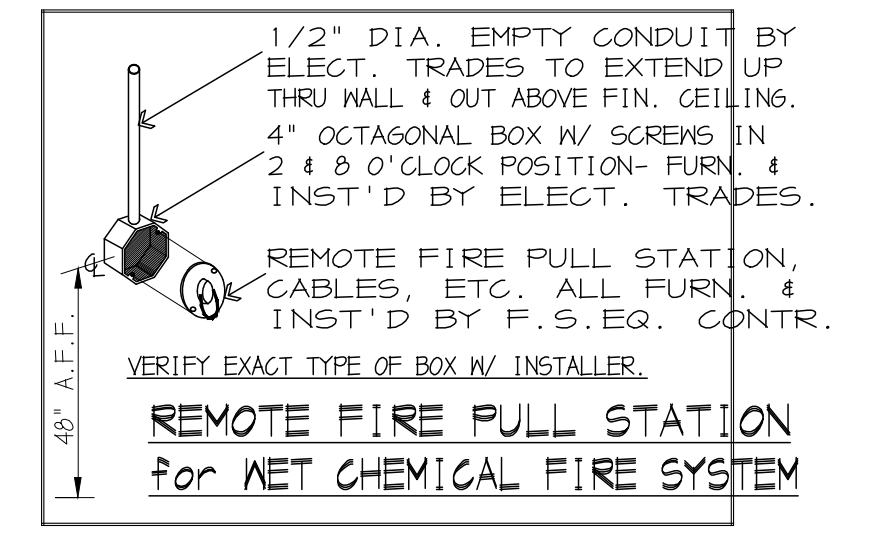
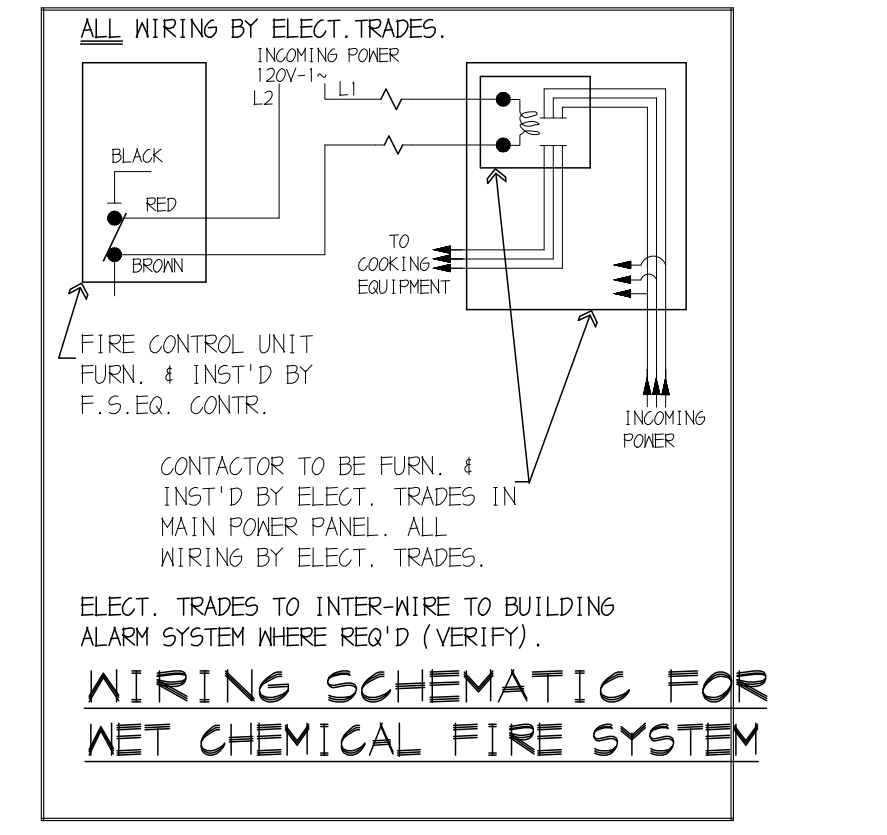
GENERAL NOTES for ROUGH-IN PLAN

ALL ADDITIONAL RECEPTACLES, CONN.'S, WIRING, ETC., TO BE SHOWN BY ELECT. ENGINEER.  
ALL 120V DUPLEX RECEPTACLES WITHIN KITCHEN AREAS & WITHIN 12" OF A SINK MUST BE GFCI PROTECTED BY ELECT. TRADES.

ELECT. TRADES TO FURN. & INSTALL ALL LINE DISCONNECT SWITCHES AS REQUIRED TO MEET STATE & LOCAL CODES.

ELECTRICAL ROUGH-IN CODE

- J.B. JUNCTION BOX
- Electrical CONDUIT CONNECTION
- H.P. HORSEPOWER
- KN. KILOWATT
- N. NATT
- V. VOLT
- 1ph. SINGLE PHASE
- 3ph. THREE PHASE
- DR DUPLEX RECEPTACLE
- SR SINGLE RECEPTACLE
- DFR DUPLEX FLOOR RECEPTACLE
- SFR SINGLE FLOOR RECEPTACLE
- FD FUSED DISCONNECT SWITCH
- SW SWITCH
- A.F.F. ABOVE FINISH FLOOR



ROOF MTD COMPRESSORS  
VERIFY EXACT LOCATION W/ ARCHITECT.

OFFICE ELECTRICAL  
TO BE SHOWN BY  
ELECTRICAL ENGINEER



PROJECT TITLE  
**New High Point  
School**

**Washtenaw  
Intermediate  
School District**

1735 South Wagner Road  
Ann Arbor, Michigan

DRAWING TITLE  
**Food Service Equipment  
Plumbing Rough in Plan**

ISSUE DATES

05.27.2020 FOR CONSTRUCTION - BID PACK 3

04.30.2020 95% BID PACK #3 CD REVIEW

12.4.2019 DESIGN DEVELOPMENT

DATE ISSUED FOR:

DRAWN R. Whitney

CHECKED ...

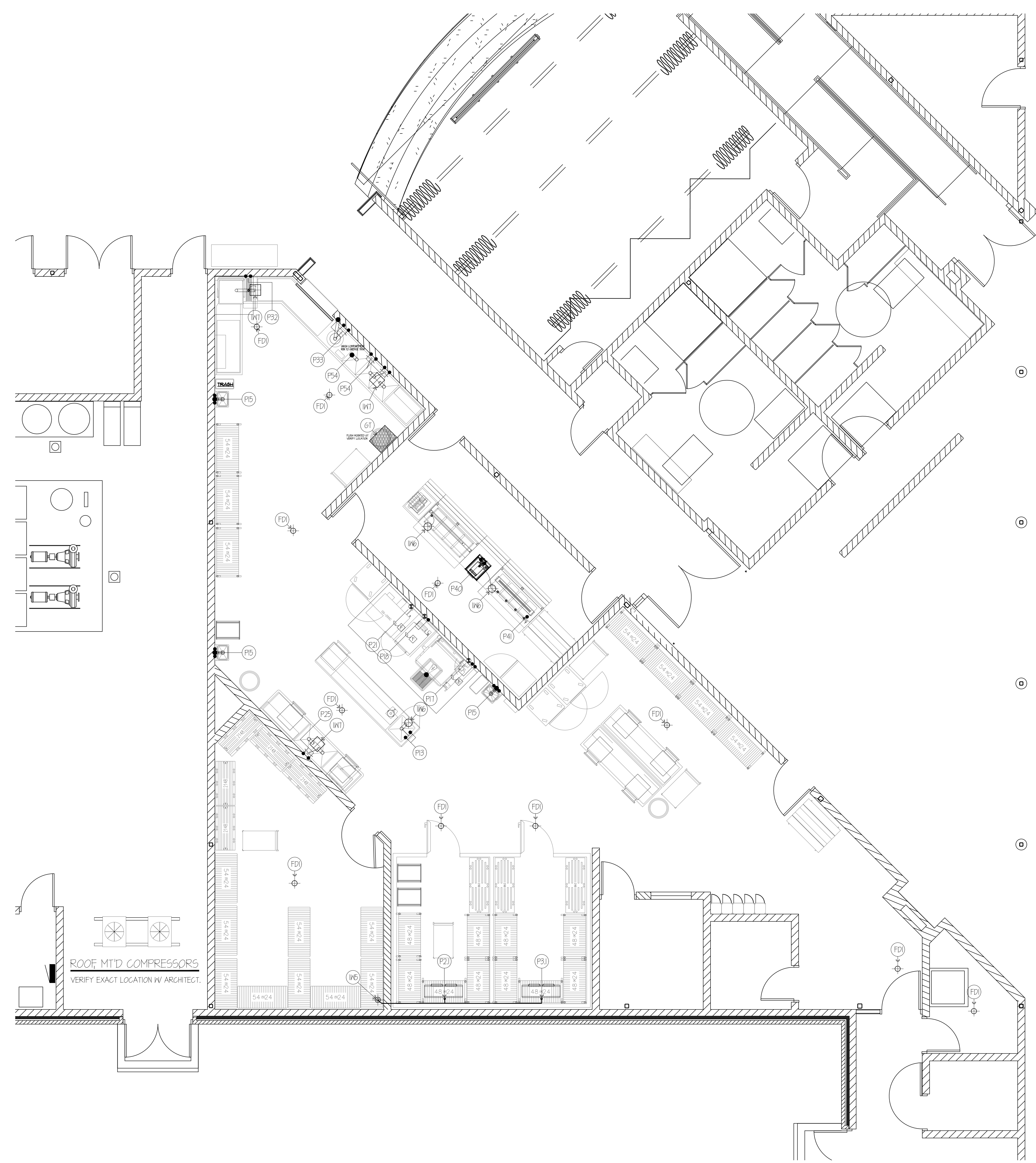
APPROVED ...

PROJECT NO.

**19040D**

DRAWING NO.

**FSE-4-BP3**



<p><b>GENERAL NOTES for ROUGH-IN PLAN</b></p> <p>THIS PLAN IS TO BE USED FOR BIDDING PURPOSES ONLY &amp; MUST BE REDRAWN BY FOOD SERVICE EQUIP. CONTR. USING ARCHITECT'S FINAL WORKING DRAWINGS (ARCH. ELECT., PLUMB. &amp; VENT.). F.S.E. CONTR. SHALL FURNISH FULLY DIMENSIONED ROUGH-IN PLAN FOR ELECTRICAL, PLUMBING, VENTILATION &amp; WALL OPENINGS WITHIN 30 DAYS AFTER AWARD OF CONTRACT. PLANS ARE TO BE REDRAWN &amp; NOT TRACED-OFF OF ORIGINAL DRAWINGS.</p> <p>FOOD SERVICE EQUIP. CONTR. IS TO ASSIST PLUMBING TRADES DURING PERIOD WHILE FINAL ROUGH-IN CONNECTIONS ARE BEING MADE. F.S.E. CONTR. SHALL FURNISH ALL NECESSARY PIPING DETAILS AND TO HAVE FIELD SUPERVISOR ON JOBSITE AT TIME OF FINAL CONNECTION.</p> <p>FOOD SERVICE EQUIP. CONTR. SHALL CONTACT PLUMB. ENGINEER BEFORE DRAWING ROUGH-IN PLAN TO VERIFY TYPE OF GAS ON JOBSITE. WHEN STEAM IS AVAILABLE, PRESSURE IS TO BE VERIFIED AND ALL EQUIPMENT TO BE FURNISHED ACCORDINGLY.</p> <p><b>GENERAL NOTE for ROUGH-IN PLAN</b></p> <p>ALL SERVICES SHOWN WITH SYMBOLS CENTERED ON WALL SHOULD BE BROUGHT TO THAT POINT CONCEALED IN WALL &amp; STUBBED-OUT AT HEIGHT SHOWN ON THIS PLAN OR F.S.E. CONTR.'S FINAL DIMENSIONED ROUGH-IN PLAN. DO NOT STUB OUT OF FLOOR &amp; RUN EXPOSED ON WALL.</p> <p><b>PLUMBING ROUGH-IN CODE REQUIREMENTS</b></p> <ul style="list-style-type: none"> <li>● H.W. HOT WATER</li> <li>● C.W. COLD WATER</li> <li>● W. WASTE</li> <li>○ I.W. INDIRECT WASTE</li> <li>⊕ F.D. FLOOR DRAIN</li> <li>⊕ F.T.F.D. FUNNEL-TYPE FLOOR DRAIN</li> <li>⊕ FLOOR SINK</li> <li>⊕ G. GAS (NATURAL)</li> <li>● A.F.F. ABOVE FINISH FLOOR</li> </ul> <p>SYMBOL DENOTES DRAIN/WASTE/CONDENSATE LINE OF VARIOUS SIZE. TO BE FURNISHED &amp; INSTALLED BY PLUMB. TRADES- TO RUN FROM EQUIPMENT TO NEAREST F.D./F.S./I.W./H.O. VERIFY EXACT SIZE WITH FSEC FINAL BUY-OUT BOOKLET.</p>	<p><b>GENERAL NOTES for ROUGH-IN PLAN</b></p> <p>PLUMB. TRADES TO RUN ALL DRAIN/WASTE/CONDENSATE LINES FROM EQUIPMENT TO NEAREST F.D./F.S./I.W. ALL ADDITIONAL PIPING, DRAINAGE, SHUT-OFF VALVES, ATMOSPHERIC V.B.'s, F.D.'s, I.W.'s, ETC., TO BE INST'D BY PLUMB. TRADES.</p> <p>ALL ADDITIONAL P.R.V.'s, R.P.Z.'s, SHUT-OFF VALVES, ATMOSPHERIC V.B.'s, SHOCK-STOPS, ETC., TO BE FURN. &amp; INST'D BY PLUMB. TRADES.</p> <p><b>FLOOR DRAIN SCHEDULE:</b></p> <p>ALL BY PLUMB. TRADES- TYPICAL SIZES SHOWN</p> <p>TYPE #1: 6" DIA. W/ FULL NICKLE-BRONZE STRAINER FLUSH W/ FINISH FLOOR.</p> <p>TYPE #2: 6" DIA. W/ FULL NICKLE-BRONZE STRAINER 4" HIGH NICKLE-BRONZE FUNNEL FLUSH W/ FINISH FLOOR.</p> <p>TYPE #3: 12" x 12" x 8 1/2" DEEP W/ FULL NICKLE-BRONZE GRATE TOP, ACID RESISTANT INTERIOR PERFORATED REMOVABLE ENAMELED BASKET. FLUSH W/ FINISH FLOOR.</p> <p>TYPE #4: 12" x 12" x 10" DEEP W/ FULL ST. REMOVABLE GRATE TOP &amp; REMOVABLE ST. PERFORATED BASKET. FLUSH W/ FINISH FLOOR.</p> <p>TYPE #5: 6" DIA. W/ FULL NICKLE-BRONZE STRAINER 4" HIGH NICKLE-BRONZE FUNNEL</p> <p>TYPE #6: 8 1/2" DIA. W/ WHITE PORCELAIN INTERIOR NICKLE-BRONZE INTERIOR DOME STRAINER</p> <p>TYPE #7: 12" x 12" x 10" DEEP NO GRATE TOP W/ ACID RESISTANT INTERIOR &amp; NICKLE-BRONZE INTERIOR DOME STRAINER</p> <p>TYPE #8: 12" x 12" x 10" DEEP W/ 1/4" CUT-OUT NICKLE-BRONZE GRATE TOP, ACID RESISTANT INTERIOR NICKLE-BRONZE INTERIOR DOME STRAINER</p> <p><b>WATER REQUIREMENTS</b></p> <p>FOR STEAMERS, COMBI-OVENS, DISHWASHERS, ETC.</p> <p>TOTAL DISSOLVED SOLIDS: 50 TO 125 PPM</p> <p>FREE CHLORINE: LESS THAN 0.1 PPM</p> <p>SILICA: LESS THAN 12 PF</p> <p>pH FACTOR: 7.0 TO 8.</p> <p>CHLORIDE: LESS THAN 30 PPM</p> <p>HARDNESS: 30 TO 70 PPM</p>
---	---





TMP ARCHITECTURE INC  
 1191 WEST SQUARE LAKE ROAD  
 BLOOMFIELD HILLS MICHIGAN 48302  
 PH 248.388.4561 FX 248.388.0223  
 EM 482.7474 TMP-ARCHITECTURE.COM



REGISTRATION SEAL

CONSULTANT



EF WHITNEY INC  
 FOOD SERVICE DESIGN CONSULTANTS  
 1000 S. OLD WOODWARD  
 SUITE 105  
 BIRMINGHAM, MI 48009  
 248.644.0950  
 www.efwhitney.com

PROJECT TITLE  
**New High Point School**  
**Washtenaw Intermediate School District**  
 1735 South Wagner Road  
 Ann Arbor, Michigan

DRAWING TITLE  
**Food Service Equipment Ventilation and Special Conditions Plan**

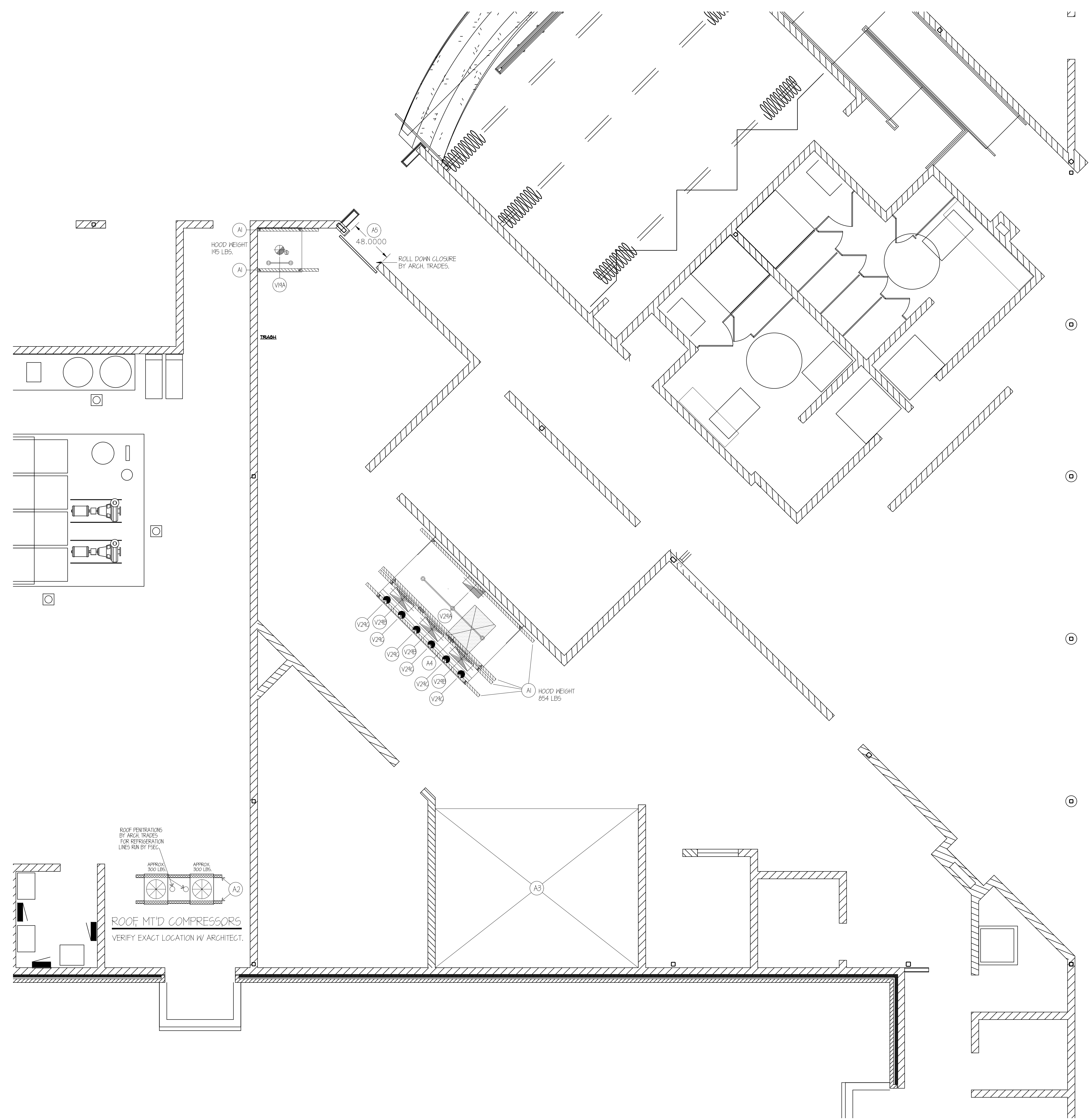
ISSUE DATES

DATE	ISSUED FOR
05.27.2020	FOR CONSTRUCTION - BID PACK 3
04.30.2020	95% BID PACK #3 CD REVIEW
12.4.2019	DESIGN DEVELOPMENT

DATE: ISSUED FOR:  
 DRAWN: R. Whitney  
 CHECKED: ...  
 APPROVED: ...

PROJECT NO.  
**19040D**

DRAWING NO.  
**FSE-5-BP3**



**GENERAL NOTES FOR ROUGH-IN PLAN**

THIS PLAN IS TO BE USED FOR BIDDING PURPOSES ONLY & MUST BE REDRAWN BY FOOD SERVICE EQUIP. CONTR. USING ARCHITECT'S FINAL WORKING DRAWINGS (ARCH, ELECT., PLUMB & VENT.). F.S.E.Q. CONTR. SHALL FURNISH FULLY DIMENSIONED ROUGH-IN PLAN FOR ELECTRICAL, PLUMBING, VENTILATION, DEPRESSION & WALL OPENINGS WITHIN 30 DAYS AFTER AWARD OF CONTRACT. PLANS ARE TO BE REDRAWN & NOT TRACED-OFF OF ORIGINAL DRAWINGS.

ALL BUILDING AND/OR ROOM VENTILATION BY HVAC ENGINEER. EXHAUST AIR QUANTITIES SHOWN ARE FOR COOKING EQUIPMENT EXHAUST HOODS ONLY. ADDITIONAL VENTILATION REQUIRED FOR KITCHEN AREAS TO BE ENGINEERED BY HVAC TRADES. HVAC TRADES TO INTER-LOCK EXHAUST FANS W/ KITCHEN SUPPLY FANS.

HVAC ENGINEER TO WRITE HVAC SYSTEM SPEC. FOR HVAC TRADES. TO CHECK & BALANCE KITCHEN VENTILATION. HVAC ENGINEER TO FILL-OUT & SUBMIT HEALTH DEPT. BALANCE REPORT. HVAC TRADES TO BE RESPONSIBLE FOR ADJUSTING AIR QUANTITIES TO EXACTLY AS SHOWN. HVAC TRADES TO BE A CERTIFIED TESTING CO.

**VENTILATION ROUGH-IN CODE**

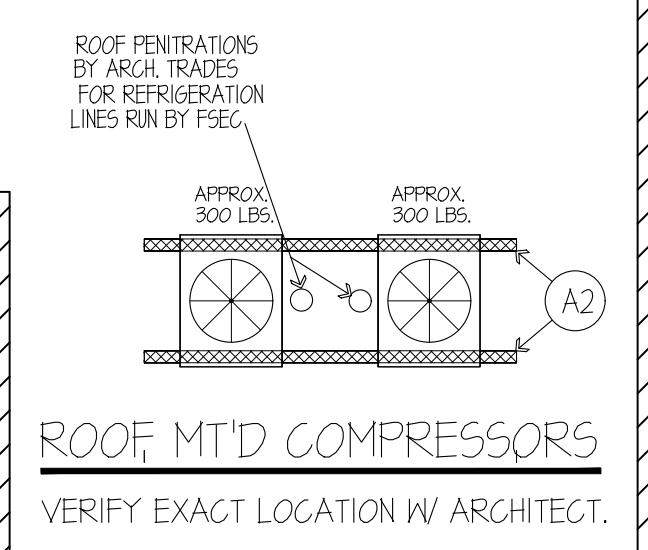
D.F.A.	DOWN FROM ABOVE
A.F.F.	ABOVE FIN. FLOOR
B.T.C.	BRANCH TO CONNECTION
HVAC	HEATING/VENTILATING
A/C	AIR-CONDITIONING TRADES
FSEQ	FOOD SERVICE EQUIPMENT CONTRACTOR

**VENTILATION NOTES**

- (V24A) 10" x 24" EXHAUST DUCT- 2550 CFM TOTAL @ -0.153" S.P. AT DUCT COLLAR. NOTE... DUCTWORK STATIC MUST BE ADDED.
- (V24B) 10" x 28" SUPPLY DUCT- 680 CFM (MAX) EACH @ 0.211" S.P. AT DUCT COLLAR. NOTE... DUCTWORK STATIC MUST BE ADDED.
- (V24C) 8" DIA. A/CSPD DUCT - 135 CFM (MAX) EACH @ 0.051" S.P. AT DUCT COLLAR. NOTE... DUCTWORK STATIC MUST BE ADDED.
- (V19A) 10" DIA. EXHAUST DUCT - 600 CFM TOTAL @ -0.090" S.P. AT DUCT COLLAR. ALL DUCTWORK BY HVAC TRADES & TO BE NON CORROSIVE, WATER-TIGHT & PITCH BACK TO DRAIN AT HOOD

**ARCHITECTURAL NOTES**

- (A1) HANGER CHANNELS FURN. & INST'D BY ARCH. TRADES- SECURED TO BUILDING STRUCTURAL TO SUPPORT EXHAUST HOODS (WEIGHTS AS SHOWN). F.S.E.Q. CONTR. TO VERIFY ALL SIZES & LOCATIONS.
- (A2) (2) TWO 3" x 6" STEEL RAILS FURN. & INST'D BY ARCH. TRADES- TO BE RUST-PROOFED & SECURED INTO ROOF TO SUPPORT COMPRESSOR RACK BY F.S.E.Q.
- (A3) 7" DEEP DEPRESSION BY ARCH. TRADES- BELOW FIN. FLOOR- TO BE SMOOTH & LEVEL FOR WALK-IN REFRIG/FREEZER BY F.S.E.Q. CONTR. w/ G.TILE FLOORING BY ARCH. TRADES.
- (A4) 32" x 44" OPENING BY ARCH. TRADES THRU FLOOR SLAB FOR ST. ST. FLOOR DRAINER FURN. BY F.S.E.Q. CONTR. & INST'D BY PLUMB. TRADES.
- (A5) OPENING BY ARCH. TRADES THRU WALL 32" AFF. TO 6'-8" ABOVE FOR DROP OFF WINDOW ROLL DOWN CLOSURE DOOR FURNISHED BY ARCHITECTURAL TRADE.





TMP ARCHITECTURE INC  
1191 WEST SQUARE LAKE ROAD  
BLOOMFIELD HILLS MICHIGAN 48302  
PH 248.388.4561 FX 248.388.0223  
EM 484.970 TMP-ARCHITECTURE.COM



REGISTRATION SEAL

CONSULTANT



PROJECT TITLE  
**New High Point School**  
**Washtenaw Intermediate School District**  
1735 South Wagner Road  
Ann Arbor, Michigan

DRAWING TITLE  
**Food Service Equipment Exhaust Hood Details**

ISSUE DATES

DATE: ISSUED FOR:  
05.27.2020 FOR CONSTRUCTION - BID PACK 3  
04.30.2020 95% BID PACK #3 CD REVIEW  
12.4.2019 DESIGN DEVELOPMENT

DRAWN R. Whitney  
CHECKED ...  
APPROVED ...

PROJECT NO.  
**19040D**  
DRAWING NO.  
**FSE-6-BP3**

**HOOD INFORMATION - Job#3943773**

HOOD NO.	TAG	MODEL	LENGTH	MAX. COOKING TEMP.	APPLIANCE DUTY	DESIGN CFM/HR	TOTAL EXH. CFM	EXHAUST PLENUM RISER(S)				MUA CFM	AC CFM	HOOD CONSTRUCTION	HOOD CONFIG.	
								WIDTH	LENG.	HEIGHT	DIA.				CFM	VEL.
1	29	4830 VHB-G	4' 0"	700 Deg.	N/A	150	600						304 SS	100%	ALONE	ALONE
2	19	ND-2-ACPSP-F	11' 4"	600 Deg.	Heavy	225	2550	10"	24"	4"	2550	1530	304 SS	Where Exposed	ALONE	ALONE

PATENT NUMBERS  
AC-PSP (United States) - US Patent 7963830 B2  
AC-PSP Wall (Canada) - CA Patent 2820509  
AC-PSP Island (Canada) - CA Patent 2520330

**HOOD INFORMATION**

HOOD NO.	TAG	TYPE	QTY.	FILTER(S)	HEIGHT	EFFICIENCY @ 7 MICRONS	QTY.	TYPE	WIRE GUARD	LOCATION	SIZE	UTILITY CABINET(S)			FIRE SYSTEM	ELECTRICAL	SWITCHES	FIRE SYSTEM PIPING	HOOD HANGING WGT
												TYPE	SIZE	MODEL #					
1	29						2	Recessed	NO									NO	196 LBS
2	19	Captrate Solo Filter	8	20"	16"	85% See Filter Spec.	3	Recessed	NO									NO	855 LBS

**HOOD OPTIONS**

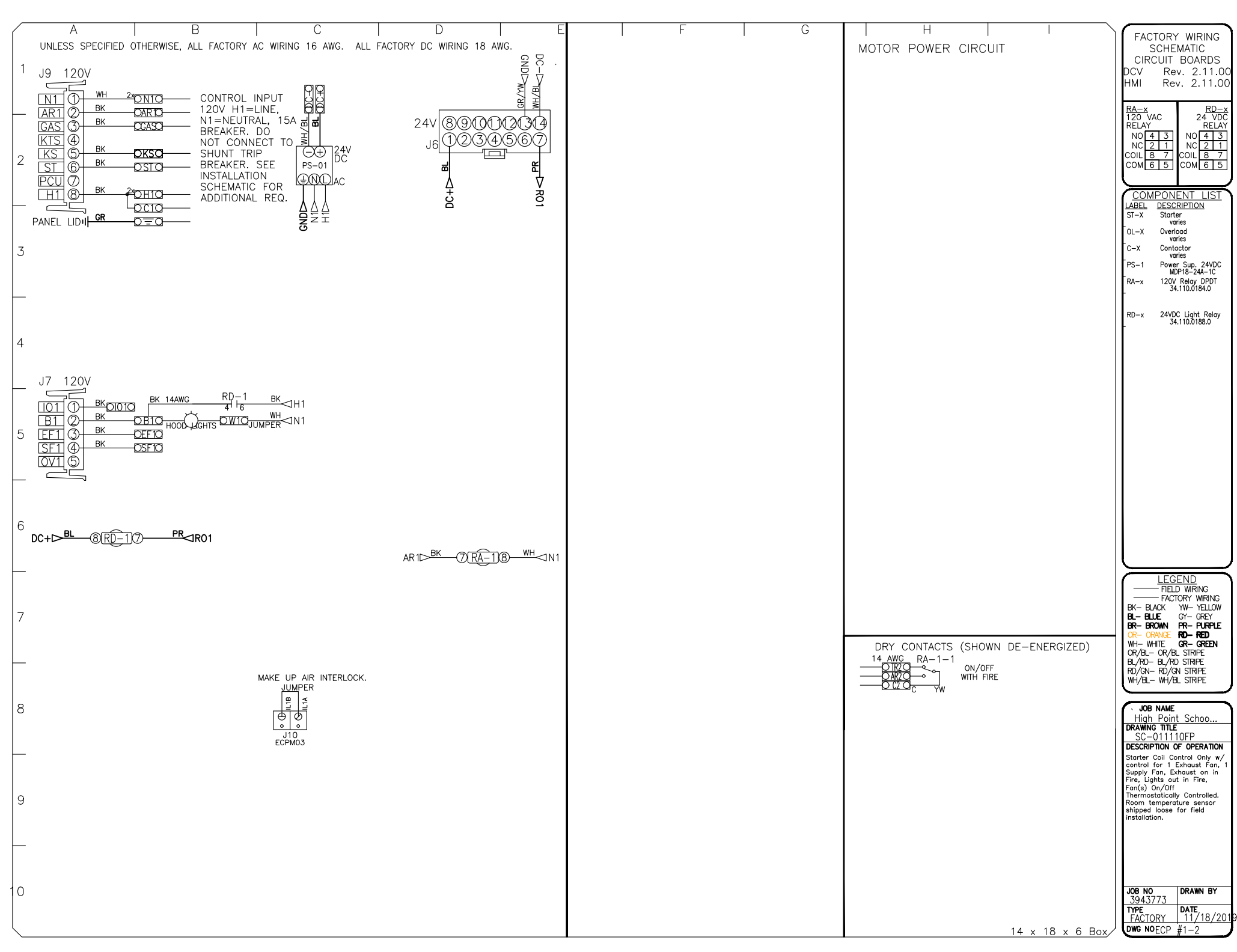
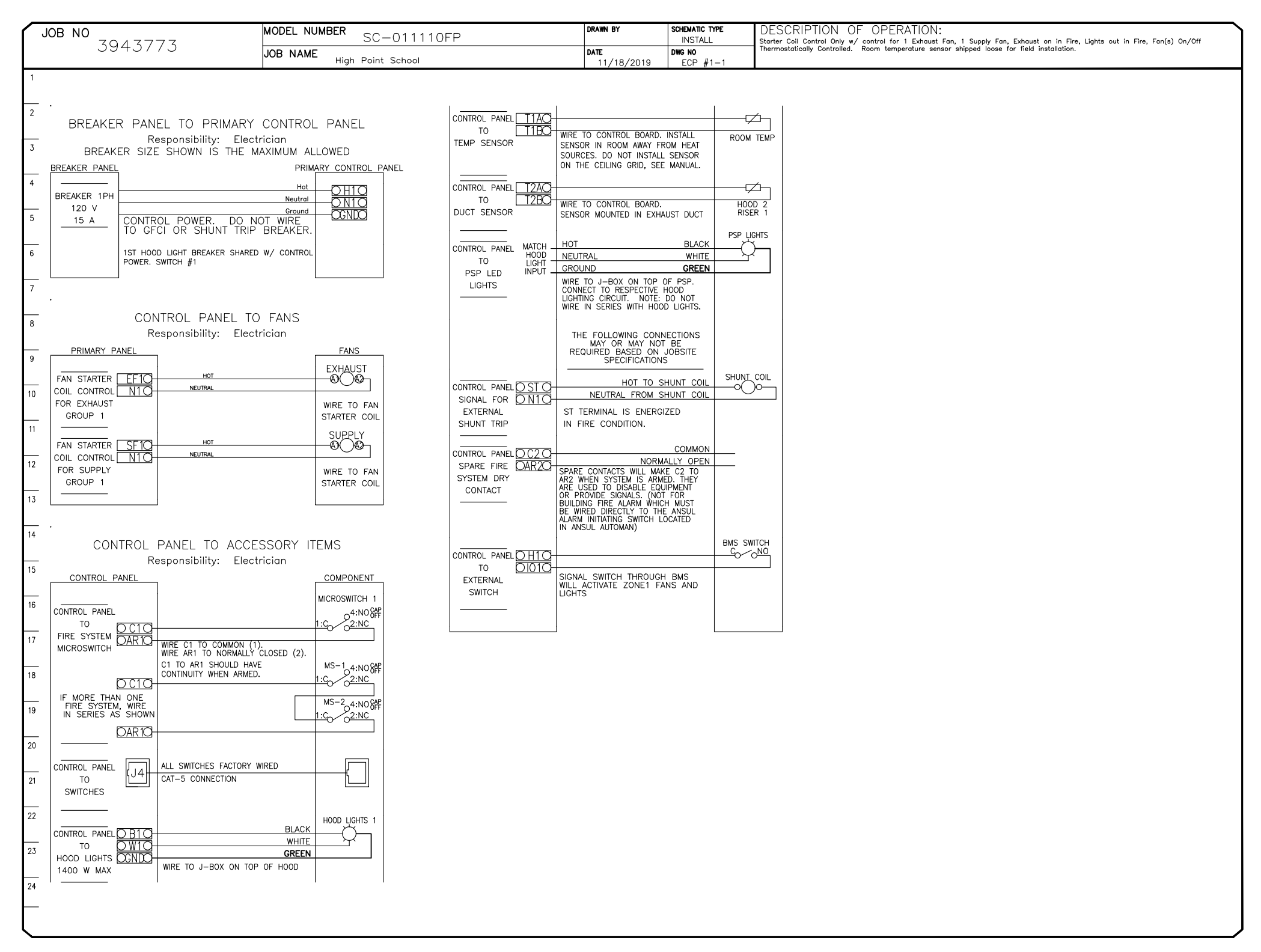
HOOD NO.	TAG	FIELD WRAPPER	HEIGHT	FRONT	LEFT	RIGHT
1	29	FIELD WRAPPER	18.00"	High	Front, Left	
		FIELD WRAPPER	12.00"	High	Front, Left, Right	
		BACKSPASH	80.00"	High X	136.00" Long	304 SS Vertical
2	19	LEFT VERTICAL END PANEL	27"	Top Width,	21" Bottom Width,	80" High Insulated 304 SS
		RIGHT VERTICAL END PANEL	27"	Top Width,	21" Bottom Width,	80" High Insulated 304 SS

**PERFORATED SUPPLY PLENUM(S)**

HOOD NO.	TAG	POS.	LENGTH	WIDTH	HEIGHT	TYPE	RISER(S)				
							WIDTH	LENG.	DIA.	CFM	S.P.
2	19	Front	136"	24"	6"	MJA	10"	28"	680	0.211"	
						MJA	10"	28"	680	0.211"	
						MJA	10"	28"	680	0.211"	
						AC	8"	135	0.057"		
						AC	8"	135	0.057"		
						AC	8"	135	0.057"		
						AC	8"	135	0.057"		
						AC	8"	135	0.057"		
						AC	8"	135	0.057"		
						AC	8"	135	0.057"		

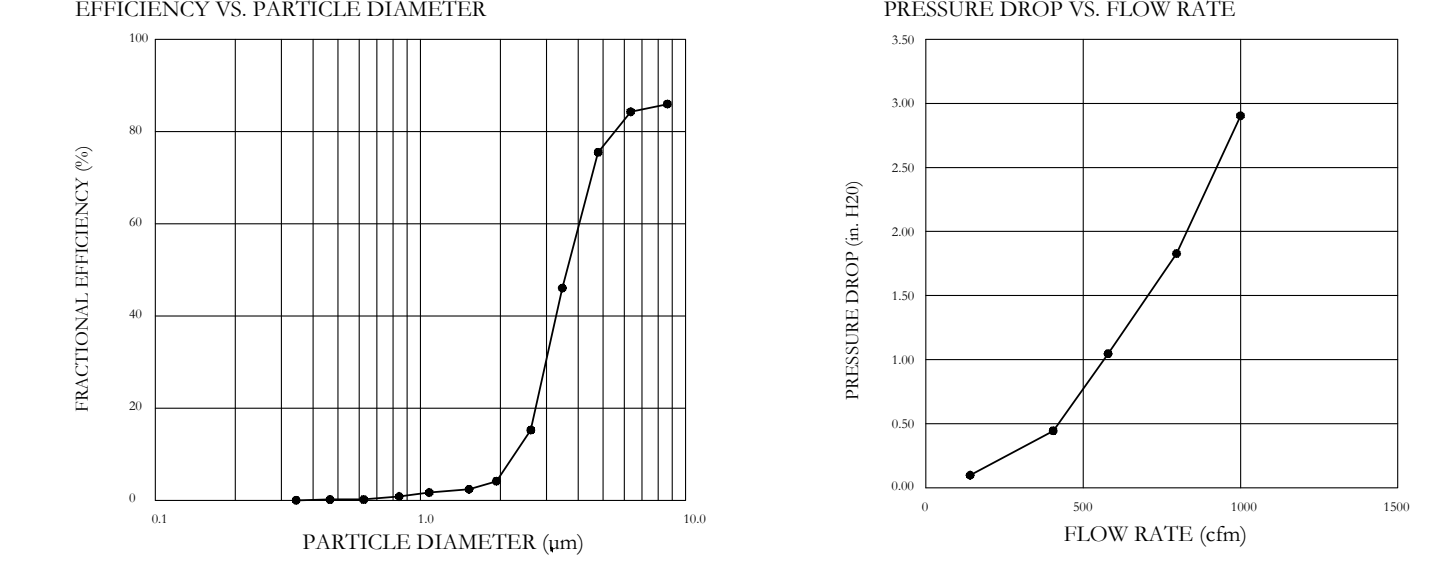
**ELECTRICAL PACKAGE - Job#3943773**

NO.	TAG	PACKAGE #	LOCATION	SWITCHES		OPTION	FANS CONTROLLED					
				LOCATION	QUANTITY		TYPE	#	H.P.	VOLT	FLA	
1	19	SC-01110FP	Wall Mount in SS Box	05 - SS Wall Mount Box	1 Light	Smart Controls Thermostatic Control						

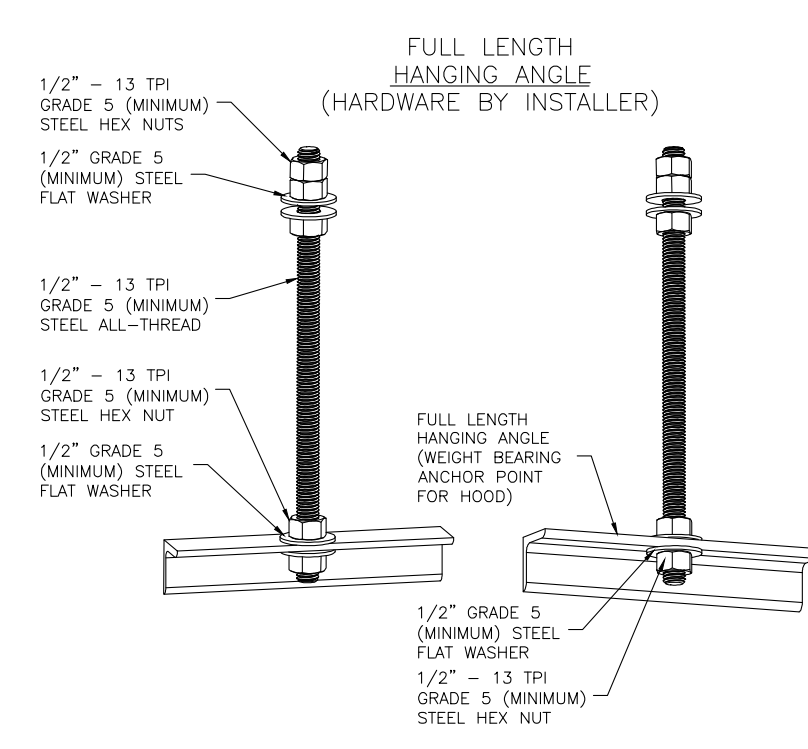


**SPECIFICATION: CAPTRATE GREASE-STOP SOLO FILTER**

THE CAPTRATE GREASE-STOP SOLO FILTER IS A SINGLE-STAGE FILTER FEATURING A UNIQUE S-BATFLE DESIGN IN CONJUNCTION WITH A SLOTTED REAR BATFLE DESIGN, TO DELIVER EXCEPTIONAL FILTRATION EFFICIENCY.  
FILTER IS STAINLESS STEEL CONSTRUCTION, AND SIZED TO FIT INTO STANDARD 2-INCH DEEP HOOD CHANNEL(S).  
UNITS SHALL INCLUDE STAINLESS STEEL HANDLES AND A FASTENING DEVICE TO SECURE THE TWO COMPONENTS WHEN ASSEMBLED.  
GREASE EXTRACTION EFFICIENCY PERFORMANCE SHALL REMOVE AT LEAST 75% OF GREASE PARTICLES FIVE MICRONS IN SIZE, AND 85% GREASE PARTICLES SEVEN MICRONS IN SIZE AND LARGER, WITH A CORRESPONDING PRESSURE DROP NOT TO EXCEED 1.0 INCHES OF WATER GAUGE. THE CAPTRATE GREASE-STOP SOLO WAS TESTED TO ASTM STANDARD ASTM F2519-05. MANUFACTURER APPROVED FOR USE IN SOLID FUEL APPLICATIONS AS A SPARK ARRESTER.  
EFFICIENCY VS. PARTICLE DIAMETER  
PRESSURE DROP VS. FLOW RATE

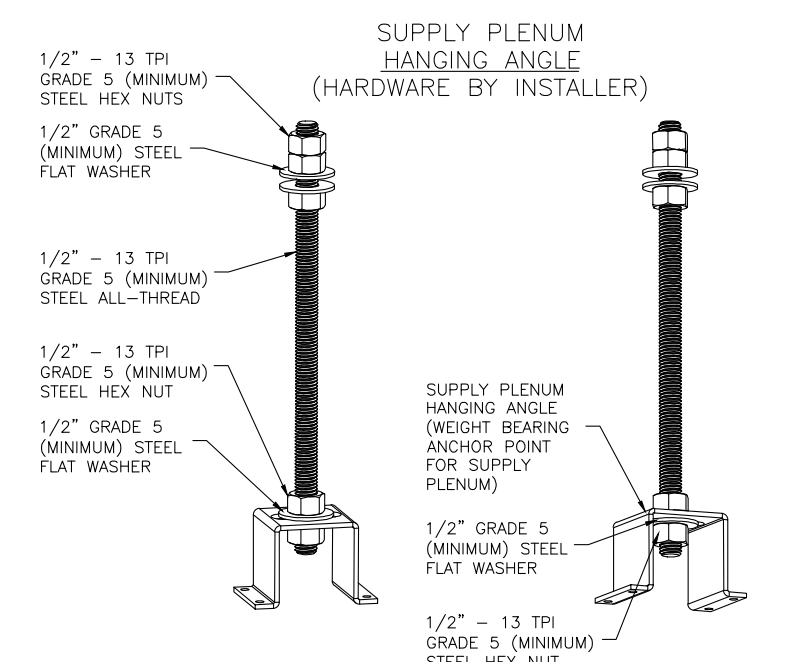


CAPTRATE FILTERS ARE BUILT IN COMPLIANCE WITH:  
NFPA #896  
NSF STANDARD #2  
UL STANDARD #1046  
INT. MECH. CODE (IMC)  
ULC-5649



**ASSEMBLY INSTRUCTIONS**

HANGING ANGLE MUST BE SUPPORTED WITH 1/2" - 13 TPI GRADE 5 (MINIMUM) ALL-THREAD, SANDWICH HANGING ANGLES AND CEILING ANCHOR POINTS WITH 1/2" - 13 TPI GRADE 5 (MINIMUM) HEX NUTS AS SHOWN. MUST USE DOUBLED HEX NUT CONFIGURATION ABOVE CEILING ANCHORS, SINGLE HEX NUT BENEATH HANGING ANGLE IS ACCEPTABLE FOR FULL LENGTH HANGING ANGLES, MAINTAIN 1/4" OF EXPOSED THREADS BENEATH BOTTOM HEX NUT. TORQUE ALL HEX NUTS TO 57 FT-LBS.



**ASSEMBLY INSTRUCTIONS**

HANGING ANGLE MUST BE SUPPORTED WITH 1/2" - 13 TPI GRADE 5 (MINIMUM) ALL-THREAD, SANDWICH HANGING ANGLES AND CEILING ANCHOR POINTS WITH 1/2" - 13 TPI GRADE 5 (MINIMUM) STEEL FLAT WASHERS AND 1/2" - 13 TPI GRADE 5 (MINIMUM) HEX NUTS AS SHOWN. MUST USE DOUBLED HEX NUT CONFIGURATION ABOVE CEILING ANCHORS, SINGLE HEX NUT BENEATH HANGING ANGLE IS ACCEPTABLE FOR PSP HANGING ANGLES. MAINTAIN 1/4" OF EXPOSED THREADS BENEATH BOTTOM HEX NUT. TORQUE ALL HEX NUTS TO 57 FT-LBS.

**REVISIONS**

NO.	DESCRIPTION	DATE

**CAPTIVE**

Michigan Office  
3870 East Paris Ave. SE, Suite 18, Grand Rapids, MI 49512 PHONE: (616) 942-8881 FAX: (616) 227-5884 EMAIL: reg77@captivemfg.com  
www.captivemfg.com

High Point School  
1735 South Wagner Road,  
ANN ARBOR, MI, 48103

DATE: 11/18/2019  
DWG.#: 3943773  
DRAWN BY: DKC  
SCALE: 3/4" = 1'-0"  
MASTER DRAWING  
SHEET NO. 1





TMP ARCHITECTURE INC  
1191 WEST SQUARE LAKE ROAD  
BLOOMFIELD HILLS MICHIGAN 48302  
PH 248.388.4561 FX 248.388.0223  
EM 4847 TMP-ARCHITECTURE.COM



REGISTRATION SEAL

CONSULTANT



EF WHITNEY INC  
FOOD SERVICE DESIGN CONSULTANTS  
1000 S. OLD WOODWARD  
SUITE 105  
BIRMINGHAM, MI 48209  
248.644.0950  
www.efwhitney.com

PROJECT TITLE  
**New High Point School**  
**Washtenaw Intermediate School District**  
1735 South Wagner Road  
Ann Arbor, Michigan

DRAWING TITLE  
**Food Service Equipment Exhaust Hood Details**

ISSUE DATES

05.27.2020 FOR CONSTRUCTION - BID PACK 3  
04.30.2020 95% BID PACK #3 CD REVIEW  
12.4.2019 DESIGN DEVELOPMENT

DATE: ISSUED FOR:

DRAWN R. Whitney

CHECKED ...

APPROVED ...

PROJECT NO.

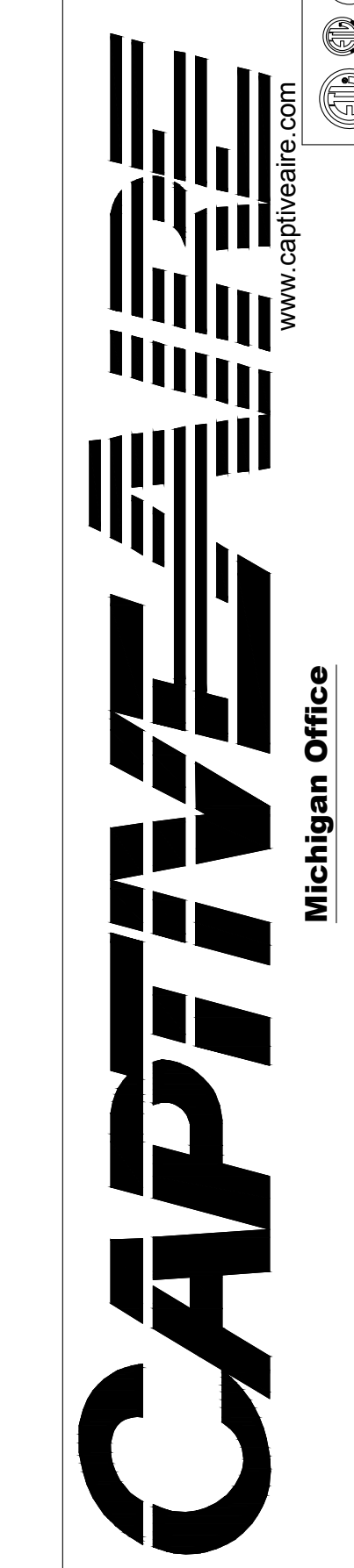
**19040D**

DRAWING NO.

**FSE-7-BP3**

REVISIONS

NO.	DESCRIPTION	DATE



High Point School  
1735 South Wagner Road,  
ANN ARBOR, MI, 48103

DATE: 11/18/2019

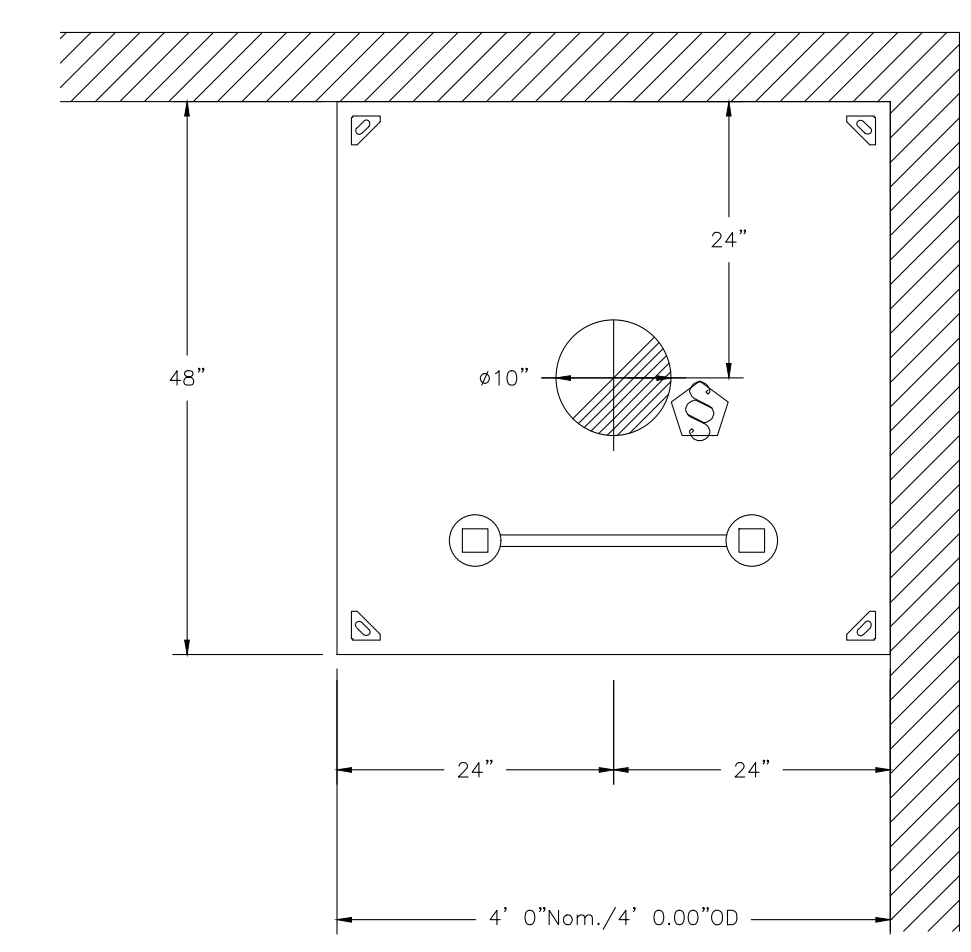
DWG.#:  
3943773

DRAWN BY:  
DKC

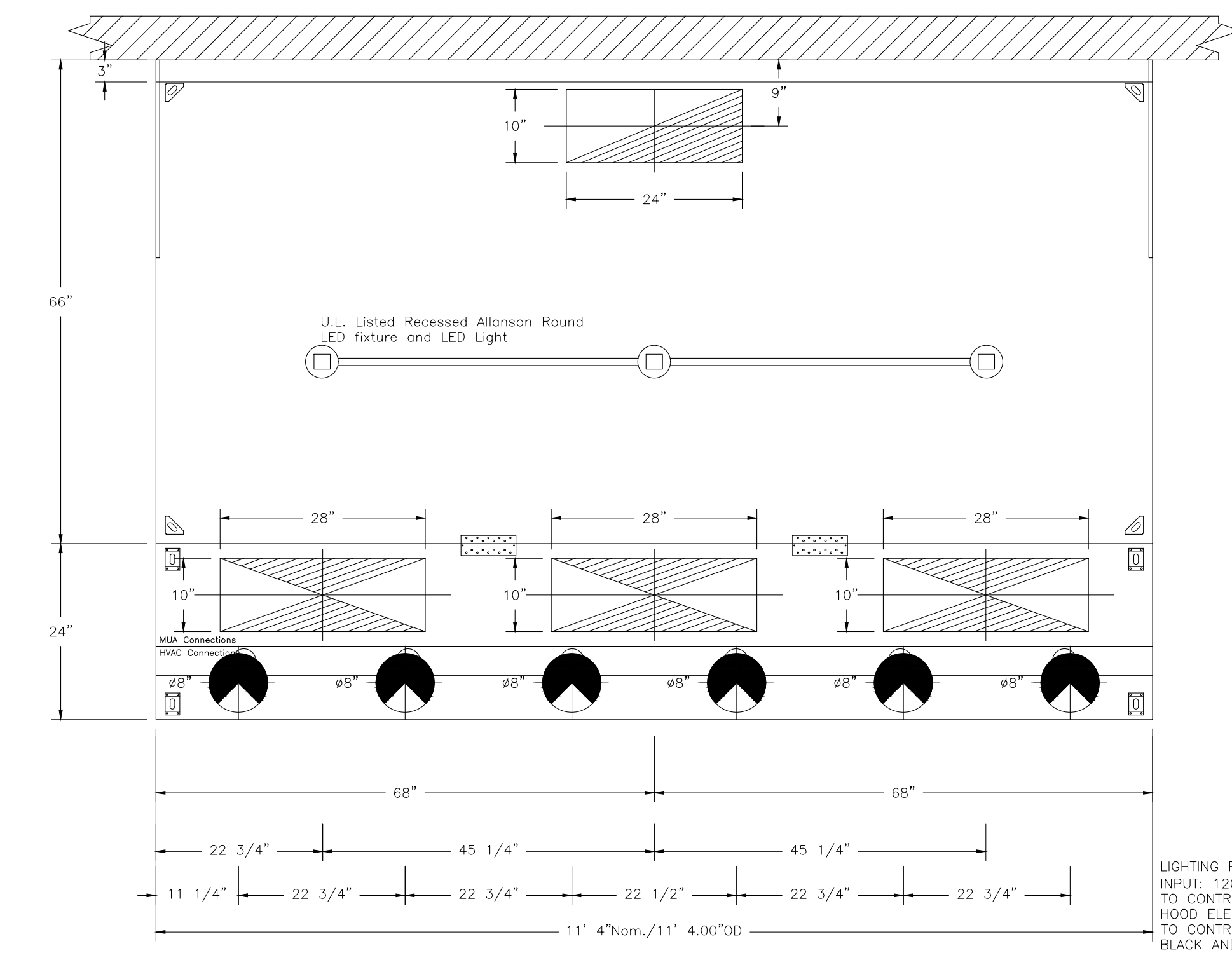
SCALE:  
3/4" = 1'-0"

MASTER DRAWING

SHEET NO.  
2



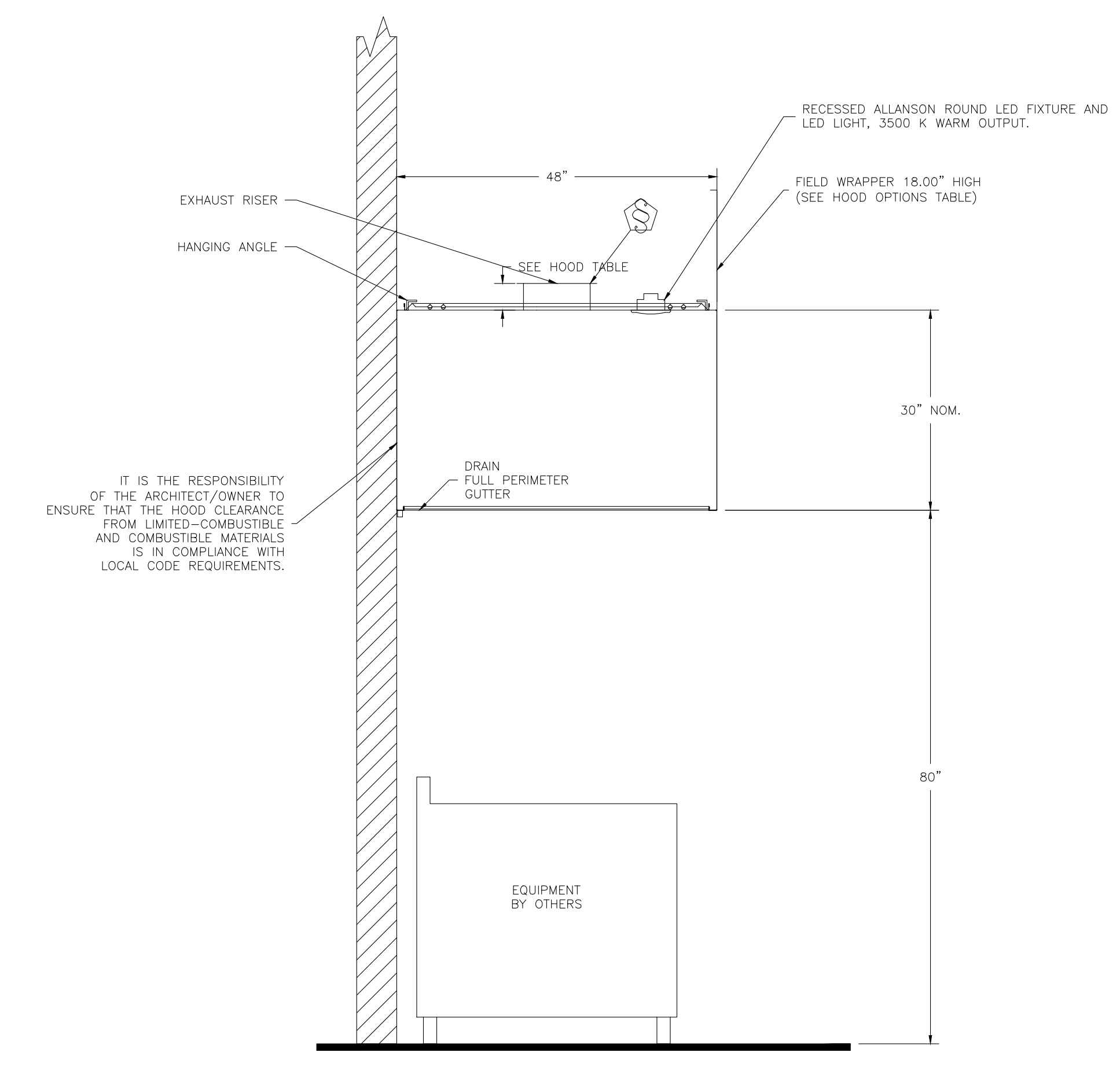
PLAN VIEW - Hood #1 (29)  
4' 0.00" LONG 4830VHR-C



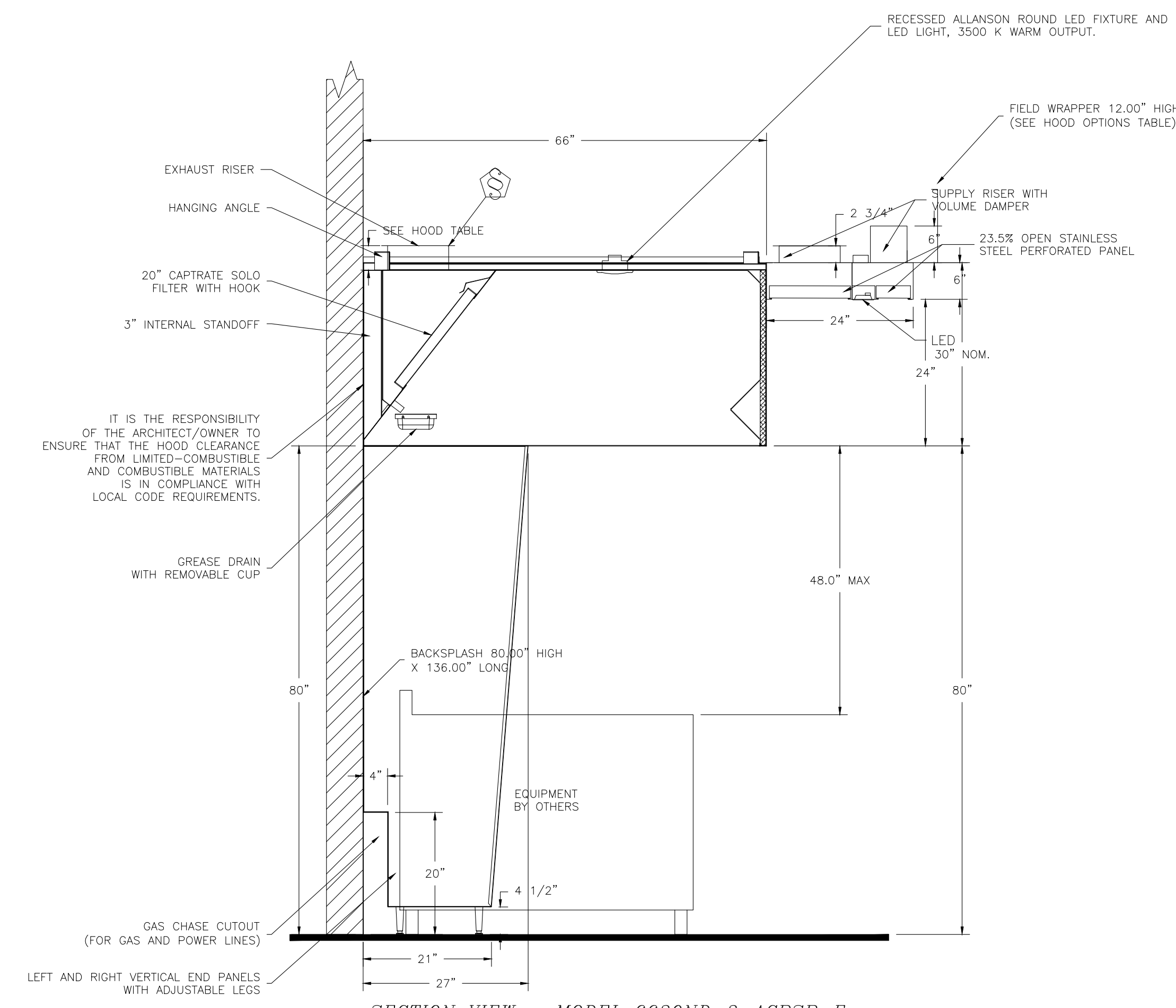
PLAN VIEW - Hood #2 (19)  
11' 4.00" LONG 6630ND-2-ACPSP-F

LIGHTING FOR ACPSP Job # 3943773 - Hood #2  
BURNS: 120V AC, 1 Phase, 50/60Hz, 3.0 Watts per foot.  
TO CONTROL LIGHTS WITH HOOD LIGHT SWITCH, WIRE PER HOOD ELECTRICAL CONTROL PANEL SCHEMATIC.  
TO CONTROL LIGHTS WITH BUILDING LIGHT SWITCH, WIRE BLACK AND WHITE WIRE TO A 120VAC SERVICE.  
END TO END ACPSPS REQUIRE 120VAC FIELD WIRING FROM J-BOX TO J-BOX. REPLACE LIGHTS WITH LED LIGHTS ONLY.

ACPSP ships loose for field installation



SECTION VIEW - MODEL 4830VHR-C  
HOOD - #1 (29)



SECTION VIEW - MODEL 6630ND-2-ACPSP-F  
HOOD - #2 (19)

IT IS THE RESPONSIBILITY OF THE ARCHITECT/OWNER TO ENSURE THAT THE HOOD CLEARANCE FROM LIMITED-COMBUSTIBLE AND COMBUSTIBLE MATERIALS IS IN COMPLIANCE WITH LOCAL CODE REQUIREMENTS.

IT IS THE RESPONSIBILITY OF THE ARCHITECT/OWNER TO ENSURE THAT THE HOOD CLEARANCE FROM LIMITED-COMBUSTIBLE AND COMBUSTIBLE MATERIALS IS IN COMPLIANCE WITH LOCAL CODE REQUIREMENTS.







