

WAKELY ASSOCIATES, INC.
ARCHITECTS
30500 Van Dyke Avenue Suite 209
Warren, Michigan 48093

ADDENDUM NO. ONE
FERNDALÉ PUBLIC SCHOOLS
2017 SINKING FUND PROJECTS
FERNDALÉ H.S. – KITCHEN / SERVING
AND CAFETERIA RENOVATION
Page 1 of 2 (write up only)

February 2, 2018

ADDENDUM NO. ONE to the plans and specifications for the FERNDALÉ PUBLIC SCHOOLS, 2017 SINKING FUND PROJECTS; FERNDALÉ H.S. – KITCHEN/ SERVING AND CAFETERIA RENOVATION, Ferndale, MI, Architect's Project No. 171745, dated January 15, 2018.

The above plans and specifications are modified, supplemented or augmented as follows, and this ADDENDUM NO. ONE, is hereby made a part of the contract documents.

Drawings: Sketch SK-1, Pre-Bid Meeting Sign-In Sheet and Spec Section 03350– Terrazzo Polishing and Spec Section 04270-Glass Unit Masonry are being issued with this Addendum.

ITEM NO. 1: Attached is the Sign-In Sheet from the Pre-Bid Meeting of January 31, 2018.

ITEM NO. 2: Refer to Sketch SK-1 (issued):
This work is to be included in the Summary of Work- Proposal A: General Trades Category; Refer to Sketch SK-1 for the location of new 60 minute fire rated temporary walls to be constructed in the Cafeteria 01 and Corridor 02 to separate the construction area while work will be in progress during the school year starting on May 1, 2018.

ITEM NO. 3: All bid categories A thru F are to be advised that the south half of the Cafeteria 01 will be made available for work to begin as of May 1, 2018 and that the building will be available for 24 hour access of contractors after May 1, 2018.

SPECIFICATION ITEMS:

ITEM NO. AS1: Refer to Specification Section 03350-Terrazzo Polishing (issued):
A. Refer to new Specification Section 03350-Terrazzo Polishing pertaining to Summary of Work – Proposal C: Terrazzo Polishing.

- ITEM NO. AS2:** Refer to Specification Section 04270-Glass Unit Masonry (Re-issued):
- A. Refer to Specification Section 04270-Glass Unit Masonry pertaining to Summary of Work – Proposal A: General Trades. Replace the originally issued section with this revised section.
- ITEM NO. AS3:** Refer to Specification Section 01010 Summary of Work- Proposal A: General Trades (Not Re-issued):
- A. For clarification: Include all demolition of the existing food service equipment in Rooms 8,9,10,11 and 18.
 - B. Include the removal of the existing of the existing raised terrazzo floor bases under the removed food service equipment as indicated on the drawings in Rooms 8,9,10,11 and 18.
- ITEM NO. AS4:** Refer to Specification Section 01010 Summary of Work- Proposal D: Plumbing/Mechanical (Not Re-issued):
- A. For clarification: Include all demolition of existing pipes, ducts, grilles, vents, valves, thermostats, etc. shown on the drawings or pertaining to the plumbing and mechanical scopes of work.
 - B. Include the coring of the terrazzo floor (roof of tunnel) as required pertaining to the plumbing and mechanical scopes of work.
 - C. Include the patching of open holes in the terrazzo floor (roof of tunnel) after demolition is complete pertaining to the plumbing and mechanical scopes of work.
- ITEM NO. AS5:** Refer to Specification Section 01010 Summary of Work- Proposal E: Electrical (Not Re-issued):
- A. For clarification: Include all demolition of existing pipes, conduits, receptacles, fire alarm, clocks, wire mold, etc. shown on the drawings or pertaining to the electrical scope of work.
 - B. Include the coring of the terrazzo floor (roof of tunnel) as required pertaining to the electrical scope of work.
 - C. Include the patching of open holes in the terrazzo floor (roof of tunnel) after demolition is complete pertaining to the electrical scope of work.

END OF ADDENDUM NO. 1

Cc: Jamie Stottlemyer, Ferndale Public School
File

SECTION 03350 - TERRAZZO POLISHING

PART 1 GENERAL

1.01 SUMMARY

- A. Section Includes: This Section specifies polishing of existing terrazzo flooring and bases.

1.02 REFERENCES

- A. National Terrazzo & Mosaic Association (NTMA):
 - 1. This Specification is a modified document of the NTMA.

1.03 ACTION SUBMITTALS

- A. General: Submit listed action submittals in accordance with Contract Conditions and Section 01330 - Submittal Procedures.
- B. Product Data: Submit product data, including manufacturer's SPEC-DATA® product sheet, for specified products.
 - 1. Material Safety Data Sheets (MSDS).
 - 2. Preparation and terrazzo grinding procedures.
 - 3. Terrazzo densifier and protector sealer.

1.04 INFORMATION SUBMITTALS

- A. Quality Assurance:
 - 1. Test Reports: Certified test reports showing compliance with specified performance characteristics and physical properties.
 - 2. Certificates:
 - a. Product certificates signed by manufacturer certifying materials comply with specified performance characteristics and criteria and physical requirements.
 - b. Current contractor's certificate signed by manufacturer declaring contractor as an approved installer of polishing system.

1.05 CLOSEOUT SUBMITTALS

- A. Warranty: Submit warranty documents specified.
- B. Operation and Maintenance Data: Submit operation and maintenance data for installed products in accordance with Section 01700 - Contract Closeout, 01720 - Project Record Documents, 01730 - Operations & Maintenance Data.
 - 1. Include:
 - a. Manufacturer's instructions on maintenance renewal of applied treatments.
 - b. Protocols and product specifications for joint filing, crack repair and/or surface repair.

1.06 QUALITY ASSURANCE

A. Qualifications:

- 1. Contractor must have 5 years minimum experience in terrazzo polishing with at least 5 projects of similar size successfully completed.

B. Mock-Ups:

- 1. Construct mock-ups of areas called for to provide new terrazzo to match existing in accordance with contract documents.
- 2. Mock-Up Size: Provide sample panel at jobsite at location as directed under conditions similar to those which will exist during actual placement.
- 3. Mock-up will be used to judge workmanship, concrete substrate preparation, operation of equipment, material application, color selection and shine.
- 4. Allow 72 hours for inspection of mock-up before proceeding with work.
- 5. When accepted, mock-up will demonstrate minimum standard of quality required for this work. Approved mock-up may remain as part of finished work.

C. Preinstallation Meetings: Conduct a preinstallation meeting to verify project requirements, manufacturer's installation instructions and manufacturer's warranty requirements. Comply with Section 01310 - Meetings. Review the following:

- 1. Environmental requirements.
- 2. Scheduling and phasing of work.
- 3. Coordinating with other work and personnel.

4. Protection of adjacent surfaces.
5. Surface preparation.
6. Repair of defects and defective work prior to installation.
7. Cleaning.
8. Grinding of existing terrazzo floor finishes.
9. Application of liquid densifier and sealer.
10. Protection of finished surfaces after installation.

1.07 DELIVERY, STORAGE & HANDLING

A. Delivery:

1. Deliver materials in manufacturer's original packaging with identification labels and seals intact.

B. Storage and Protection:

1. Store materials protected from exposure to harmful weather conditions and at temperature conditions recommended by manufacturer.
2. Protect adjacent floor finishes.

C. Waste Management and Disposal:

1. Remove from site and dispose of packaging materials at appropriate recycling facilities.

1.08 WARRANTY

- A. Project Warranty: Refer to Contract Conditions for project warranty provisions.
- B. Warranty: Commencing on date of Substantial Completion as determined by Architect.

1.09 MAINTENANCE

- A. Comply with manufacturer's written instructions to maintain installed product.

PART 2 PRODUCTS

2.01 CHEMICAL PRODUCTS

- A. Prosoco LS Densifier
- B. Prosoco Concrete Protector Sealer

2.02 REPAIR MATERIAL

- A. Metzger McGuire Rapid Refloor
- B. Hi Tech TX3

2.03 SOURCE QUALITY CONTROL

- A. Ensure terrazzo finishing components and materials are from single manufacturer.

2.04 PRODUCT SUBSTITUTIONS

- A. Substitutions: No substitutions or alternates permitted.

PART 3 EXECUTION

3.01 MANUFACTURERS INSTRUCTIONS

- A. Compliance: Comply with manufacturer's written data, including product technical bulletins, product catalog installation instructions, product carton installation instructions and SPEC-DATA sheets.

3.02 EXAMINATION

- A. Site Verification of Conditions:
 - 1. Verify that terrazzo substrate conditions, are acceptable for product installation in accordance with manufacturer's instructions prior to commencing with the work.
 - 2. Prepare all cracks full depth with repair material.

3.03 PREPARATION

- A. Ensure surfaces are clean and free of dirt and other foreign matter harmful to performance of terrazzo finishing materials.
- B. Examine surface to determine soundness of terrazzo floors and bases for polishing.

3.04 PROCEDURE

A. Floor Surface and Base Polishing:

1. Remove old floor finish from the floor and base.
2. Initial grind floor using 60/80 grit metal bonded tooling, vacuum and rinse the floor and base and allow to dry to expose areas in need of repairs.
3. Do repairs - route out holes and cracks and fill with specified repair material to match color of floor. See bid category scope of work for l.f. of anticipated crack repair in each room.
4. Hone floor using a 50 and 100 grid transitional tooling, clean the floor and base with a neutral cleaner, rinse, allow to dry.
5. Polish floor with 200 grit resin tooling, clean the floor.
6. Densify the floor with specified product..
7. Polish floor with 200, 400, 800, and 1500 grit resin tooling, cleaning the floor in between steps, vacuum and rinse the floor and base and allow to dry.
8. Wash the floor and base with a neutral cleaner, rinse, allow to dry and apply specified protective sealer.
9. Remove the excess sealer with a propane buffer and a 3000 grit diamond impregnated pad, wash floor and base with a neutral cleaner, rinse, allow to dry.

3.05 FINAL CLEANING

- A. Do cleanup in accordance with Section 01550 - Clean Up and Final Cleaning.
- B. Contractor must remove surplus and excess materials, rubbish, tools and equipment.
- C. Upon completion, this work shall be ready for final inspection and acceptance by the Owner.
- D. This Contractor to protect all floors after completion of work.

END OF SECTION

SECTION 04270 - GLASS UNIT MASONRY

PART 1 GENERAL

1.1 SECTION INCLUDES

- A. Glass blocks, hollow.
- B. Accessories.
- C. Mortar.

1.2 RELATED SECTIONS

- A. Section 04100 - Mortar and Grout
- B. Section 04300 - Unit Masonry
- C. Section 07920 - Sealants and Caulking

1.3 REFERENCES

- A. ASTM C 144 - Standard Specification for Aggregate for Masonry Mortar; 1999.
- B. ASTM C 150 - Standard Specification for Portland Cement; 2002.
- C. ASTM C 207 - Standard Specification for Hydrated Lime for Masonry Purposes; 1991 (Re-approved 1997).
- D. ASTM C 270 - Standard Specification for Mortar for Unit Masonry; 2001a.
- E. ASTM D 1187 - Standard Specification for Asphalt-Base Emulsions for Use as Protective Coatings for Metal; 1997 (Re-approved 2002).

1.4 SUBMITTALS

- A. Submit under provisions of Section 01330 "Submittals".
- B. Product Data: Submit manufacturer's literature, installation and preparation instructions and recommendations, and storage and handling requirements and recommendations.
- C. Verification Samples:
 - 1. Two glass block units of each type specified, showing size, design, and pattern of faces.

2. Representative samples of panel reinforcing, panel anchors, expansion strips, and sealant, as required for project.

1.5 DELIVERY, STORAGE, AND HANDLING

- A. Store products in manufacturer's unopened packaging in clean, cool, dry area until ready for installation.
- B. Protect opened cartons of glass block against windblown rain or water run-off with tarpaulins or plastic covering.
- C. Maintain materials and ambient air temperatures to a minimum of 40 degrees prior to, during and 48 hours after completion of work.

1.6 PROJECT CONDITIONS

- A. Do not install glass block units when temperature is 40 degrees Fahrenheit (4 degrees Celsius) and falling.

1.7 WARRANTY

- A. Glass Block Units: Limited 5 year warranty on product only.

PART 2 PRODUCTS

2.1 MANUFACTURERS

- A. Acceptable Manufacturer: Seves Glass Block; 10576 Broadview Rd., Broadview Hts. Ohio 44147; (Tel)1- 877-738-3711. Website: www.sevesglassblock.com.
- B. Requests for substitutions will be considered in accordance with provisions of Section 01630 "Product Substitutions".
- C. Warrant that substitutions will provide performance equivalent to materials specified herein by providing

supporting technical data, samples and published specifications.

2.2 GLASS BLOCKS

- A. Glass Blocks: General.
 - 1. Finish: Polyvinyl butyral edge coating.
 - 2. Framing: Framed and anchored using panel anchor construction.

- B. Glass Blocks: SEVES/VitraBlok (60 min fire rated)
 - 1. Pattern: (clear).
 - 2. Size: Face, 8" by 8", nominal thickness, 4".
 - 3. Weight Installed with Mortar: 25 lb/sq ft.
 - 4. Thermal Conductance (U Value): 0.51 Btu/hr sq ft deg F winter night.
 - 5. Thermal Resistance (R Value): 1.96 deg F hr sq ft/Btu.
 - 6. Visible Light Transmission: 75 percent.
 - 7. STC Rating: 48
 - 8. Impact Strength: 50 to 60 pounds minimum.

2.3 ACCESSORIES

- A. Panel Reinforcing: Two parallel 9 gage wires either 1-5/8 inches (41 mm) or 2 inches (51 mm) on center with electrically butt-welded crosswires spaced at regular intervals, galvanized after welding; complying with ASTM A 82 and ASTM A 153.

- B. Panel Anchors: 20 gage perforated stainless steel strips 16 inches long by 1-3/4 inches wide. All reinforcing to be #304 stainless steel.

- C. Expansion Strips: Polyethylene foam with thickness of 3/8 inch x 3 1/2".

- D. Asphalt Emulsion: Water-based; Karnac 100 or equal.

- E. Sealant (caulk): Non-staining; waterproof mastic; urethane type. Provide fire retardant type sealant for head and jamb locations at fire rated locations. Color to be selected from manuf standard color range.
- F. Mortar: Type S, in accordance with ASTM C 270; 1 part Portland Cement, 1/2 part lime, and fine sand to equal 2-1/2 to 3 times the amount of cementitious material, all measures by volume; add integral type waterproofer for exterior glass block panels; antifreeze compound or accelerators are unacceptable.
 - 1. Portland Cement: Type 1, in accordance with ASTM C 150.
 - a. Color: As selected by architect from the manufacturer's full line of colors.
 - 2. Lime: Type S, in accordance with ASTM C 207; use pressure hydrated dolomitic lime, providing that not less than 92 percent of active ingredients are completely hydrated.
 - 3. Sand: Clean, white quartzite essentially free of iron compounds, in accordance with ASTM C 144; not less than 100 percent passing a No. 8 sieve.
 - 4. Integral Type Water-Repellant: Stearate; as recommended by block manufacturer.
 - 5. External Type Waterproofer: Water based silane sealer; as recommended by block manufacturer.

PART 3 EXECUTION

3.1 EXAMINATION

- A. Do not begin installation until substrates have been properly prepared.
- B. If substrate preparation is the responsibility of another installer, notify Architect of unsatisfactory preparation before proceeding.

- C. Verify that structural members supporting glass blocks are designed for maximum deflection of $L/600$ under installed load.
- D. Verify that panel anchors or channels for support at head and jambs are properly installed.

3.2 PREPARATION

- A. Clean surfaces thoroughly prior to installation.
- B. Prepare surfaces using the methods recommended by the manufacturer for achieving the best result for the substrate under the project conditions.

3.3 INSTALLATION

- A. Install in accordance with manufacturer's instructions with glass blocks set in full mortar bed with joint reinforcing at 16 inches (406 mm) on center and in joints immediately above and below openings.
- B. Paint sills of all panels with heavy coat of asphalt emulsion and dry for minimum two hours before first mortar bed is placed.
- C. Make provision for expansion and movement at jambs and heads of all panels; do not allow structural loads to bear on glass blocks.
- D. Mix mortar and apply in accordance with manufacturer's recommendations.
- E. Non masonry fire rated steel stud and gypsum board wall assemblies receiving fire rated glass block must conform to UL listed wall assembly #U465.

3.4 CLEANING

- A. Remove excess mortar from glass surfaces immediately following application with a damp cloth.

JANUARY 12, 2018

- B. Remove excess mortar from faces of glass block at time joints are struck or tooled.

3.5 PROTECTION

- A. Protect installed products until completion of project.
- B. Maintain temperature of glass unit masonry above 40 degrees Fahrenheit (4 degrees Celsius) before, during and for first 48 hours after construction.
- C. Touch-up, repair or replace damaged products before Substantial Completion.

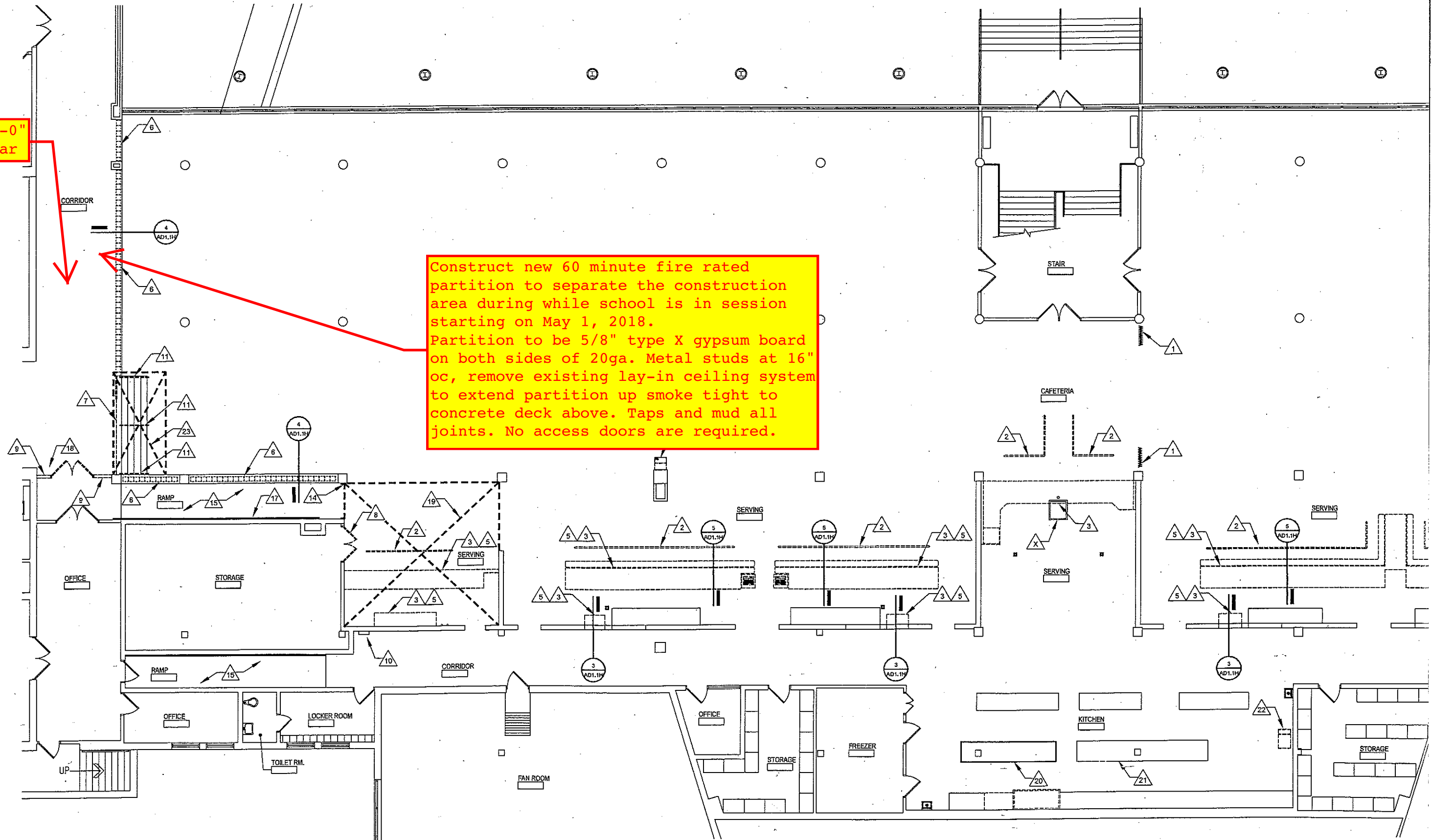
END OF SECTION 04270

FERNDALE PUBLIC SCHOOLS
 2017 SINKING FUND PROJECTS
 FERNDALE HS-KITCHEN/SERVING LINE
 AND CAFETERIA RENOVATION
 WAKELY PROJECT #171745
 PRE-BID MEETING
 SIGN-IN SHEET
 JANUARY 31, 2018
 3:30 P.M.

NAME	FIRM	PHONE NO.	FAX NO.	EMAIL
Dan Thomas	Heritage Contr.	248-396-7574	248-391-8283	dthomas@heritagelc.com
JAMES KUGLER	CONSTRUCTION SOLUTIONS	734-741-0500	741-0602	jim@construction-solutions-inc.com
Kevin Nolan	Gold Star	(313) 460-2121	(248) 548-4844	Kevin.N@goldstar.com
HARON OLIVER	Evusion	248 305 8181	248 305 8183	HOLIVER@EVUSIONBUILDERS.NET
Brad O'Dea	City Contracting Services	810-922-2134	248-530-4340	bradford@citycontractingservices.com
Nick Bub	Core Mech.	419-351-4640	734-856-6099	NickJBub@gmail.com
Jon Kobotko	Service Pro	248-912-9973	248-912-9975	Jon.Kobotko@yourworkorder.com
Sammy Lavin	Service Pro	248-912-9973	248-912-9975	Sammy.Lavin@yourworkorder.com
JAMES LUOPORTIS	HICKS CONST	586.566.6060		jligoroti@hicksconstruction.com
JAMES LUOPORTIS	HICKS CONST	586.566.3844		jligoroti@hicksconstruction.com
CARRY PRYKUCKI	Sawyer Services	586-646-5181		lprykucki@sawyerservices.net
MIKE SCHOENHERR	M.L. SCHOENHERR	586 739 2010	586 739 2043	m.schoenherr@construction@yohio.com
TOM DANIEL	R&E DEVELOPMENT GROUP	586.557.2032	586.586.0471	tdaniel@redevoip.com

Maintain 6'-0" minimum clear

Construct new 60 minute fire rated partition to separate the construction area during while school is in session starting on May 1, 2018. Partition to be 5/8" type X gypsum board on both sides of 20ga. Metal studs at 16" oc, remove existing lay-in ceiling system to extend partition up smoke tight to concrete deck above. Taps and mud all joints. No access doors are required.



SKETCH SK-1