



CLARK
Construction Company

3535 Moores River Drive • PO Box 40087 • Lansing, MI 48901
517.372.0940 fax: 517.372.0668

12/18/2017

ADDENDUM NO. 3

PROJECT: Birmingham Public Schools
DESCRIPTION: West Maple French School Remodeling
BID PACKAGE RELEASE NUMBER: 5

BID PROPOSAL DUE DATE/TIME: 2:00 pm, Thursday, December 21, 2017

The following clarifications and/or Changes made to the Contract Documents are hereby made part of the Contract Documents.

The general character of the Work clarified or revised by this Addendum shall be the same as required by the complete set of Contract Documents. All incidentals required in connection with the Work of this Addendum shall be included in the Scope of Work even though not specifically specified.

All bidders shall be held responsible to review the Addendum and to include in its Bid Proposal all Work reasonably inferred to be included in its Scope of Work.

Acknowledge receipt of this Addendum in the space provided on the Bid Proposal Form.

-
- A. Architect/Engineer Documentation:** Addendum No. 3 Write-Up from TMP dated 12/15/2017 and revised drawings:
- a. Specification Changes
 - b. Architectural Drawing Changes
 - i. A1.1D
 - ii. A5.1
 - iii. A9.1D
 - iv. A10.1D
- B. Bidding and Contract Requirement Modifications:**
- a. Bid Category No. 06 General Contractor
 - i. Include:
 - 1. 096700 Epoxy Floor Coatings
 - 2. 200500 Common Work Results

C. Section 004126 Bid Proposal Form

- a. Disregard section 10 – Allowances. There are no allowances.

D. RFI Question & Answers

- a. RFI Question: Refer to A1.1D. The exterior of Rooms D105 & D108 have a wall tag of 1H, which is 1-1/2” Z furring 16” oc. Details 16&18/A5.1 call for the z furring to be 12” oc. Please clarify.

TMP Response: 16” o.c. 16&18/A5.1 will be modified to reflect [Anna Read – TMP Architecture, Inc. – 12/15/17]

- b. RFI Question: Are the walls in all bathrooms to receive Ceramic Tile as noted on Sheet A1.1D Wall Note 1B or are we to follow Sheet A10.1D (Epoxy Paint). If it is Ceramic Tile we will need specification for the product.

TMP Response: Epoxy paint. [Anna Read – TMP Architecture, Inc. – 12/15/17]

- c. RFI Question: Refer to A9.1D. Is the casework in D106 owner furnished?

TMP Response: No, include in bid. [Anna Read – TMP Architecture, Inc. – 12/15/17]

- d. RFI Question: Low Voltage Wiring – Please advise if this company (Security 101 Detroit) can quote the security low voltage wiring for this project.

TMP Response: TMP has no experience with this company, nor has the AE contact at the district. Please use specified access control contractor. [John Miliacca – TMP Architecture, Inc. – 12/18/17]

END OF SECTION



ADDENDUM

DATE: December 15, 2017

PROJECT: West Maple Elementary French School Remodeling

TMP PROJECT NO.: 15104A

ADDENDUM NO.: Three (3)

BID PACKAGE NO.: 5

ADDENDUM NO. 1 WAS PREVIOUSLY ISSUED ON DECEMBER 13, 2017

ADDENDUM NO. 2 WAS PREVIOUSLY ISSUED BY THE CONSTRUCTION MANAGER.

The Bidding Documents are modified, supplemented or augmented as follows and this Addendum is hereby made a part of the proposed Contract Documents.

The following Drawings and Attachments are issued with this Addendum.

Drawing Nos.: A1.1D, A5.1, A9.1D, and A10.1D.

Attachments: Specification Sections 096700 and 200500.

ITEM NO. SPECIFICATION CHANGES

SC-1 Refer to Section TC – TABLE OF CONTENTS (not reissued):

A. Added new section “096700 Epoxy Floor Coatings” to the Table of Contents.

SC-2 Refer to Section 096700 – EPOXY FLOOR COATINGS (new):

A. Added Section to Specifications.

SC-3 Refer to Section 200500 – COMMON WORK RESULTS (new):

A. Added Section to Specifications. (This was listed on the BID TC but never issued).

ITEM NO. ARCHITECTURAL DRAWING CHANGES

AD-1 Refer to Drawing No. A1.1D (reissued):

A. Refer to Wall/Partition Legend 1B. Modified 1B to read, “4” GALVANIZED METAL STUDS AT 16” ON CENTER (MAX) WITH 3” ACOUSTIC BATT INSULATION FULL HEIGHT. ON SIDE SCHEDULED TO RECEIVE EPOXY FINISH PROVIDE 5/8” MOISTURE RESISTANT GYPSUM BOARD FROM FLOOR TO 4” ABOVE HIGHEST ADJACENT CEILING. ON SIDE NOT SCHEDULED TO RECEIVE EPOXY FINISH PROVIDE 5/8” GYPSUM BOARD EXTENDING FROM FLOOR TO 4” ABOVE HIGHEST ADJACENT CEILING. BRACE TO ADJACENT WALLS AS REQUIRED.”

o:\2015\15104a\specs\addenda\add03\add03.docx

- B. Refer to Wall/Partition Legend 1D. Modified 1D to read, "PROVIDE 5/8" MOISTURE RESISTANT GYPSUM BOARD ONE SIDE, HEIGHT: FROM TOP OF FLOOR TO 4" ABOVE HIGHEST ADJACENT CEILING. BRACE TO ADJACENT WALLS AS REQUIRED."

AD-2 Refer to Drawing No. A5.1 (reissued):

- A. Refer to Details 4, 9 & 12/A5.1. Removed note for wood trim as indicated.
- B. Refer to Details 16 & 18/A5.1. Modified note to read, "1 – ½" metal z furring @ 16" O.C."

AD-3 Refer to Drawing No. A9.1D (reissued):

- A. Refer to Room D106. Added casework tag where indicated.

AD-4 Refer to Drawing No. A10.1D (reissued):

- A. Refer to Finish Tags for rooms D107, D109, D122 & D125. Modified floor and base type to trolled epoxy.
- B. Refer to Finish Legend Base and Wall abbreviations. Added TREP, trolled epoxy as indicated.

****END OF ADDENDUM NO. 3 – BID PACKAGE NO. 5****

EPOXY FLOOR COATINGS

PART 1 - GENERAL

1.1 RELATED DOCUMENTS

- A. Drawings and general provisions of Contract, including General and Supplementary Conditions and Division 1 Specification Sections, apply to this Section.

1.2 DESCRIPTION OF WORK

- A. Application of epoxy floor coatings including surface preparation, priming, and topcoats.
- B. Extent of application of epoxy floor coatings is indicated on Drawings and in Room Finish Schedules.

1.3 SUBMITTALS

- A. Product Data: Submit manufacturer's product data for each coating, including generic description, complete technical data, surface preparation, and application instructions.
- B. Samples for Initial Selection: Submit manufacturer's color charts or samples showing full range of standard colors and textures.
- C. Samples for Verification: For each epoxy floor coating required submit the following:
 - 1. Three (3) samples, on hardboard for each color and texture showing the full range of color and texture expected.
- D. Manufacturer's Quality Assurance: Submit manufacturer's certification that epoxy floor coatings comply with specified requirements and are suitable for intended application.
- E. Installer Qualifications.
- F. Warranty: Submit manufacturer's standard warranty.

1.4 QUALITY ASSURANCE

- A. Installer Qualifications: Engage an experienced installer with not less than five (5) years of successful experience in installing epoxy floor coatings similar to that required for this project.
- B. Source Limitations: Obtain each type of epoxy floor coating from one source and by a single manufacturer.
- C. Mockups: Before installing system, construct mockups to verify selections made under Sample submittals and to demonstrate aesthetic effects and qualities of materials and execution. Build mockups to comply with the following requirements, using materials indicated for completed Work:
 - 1. Locate mockups in the location and of the size indicated or, if not indicated, as directed by Architect.
 - 2. Notify Architect seven days in advance of the dates and times when mockups will be constructed.

3. Demonstrate the proposed range of aesthetic effects and workmanship.
4. Obtain Architect's approval of mockups before starting installation of work.
5. Maintain mockups during construction in an undisturbed condition as a standard for judging the completed Work.
6. Approved mockups in an undisturbed condition at the time of Substantial Completion may become part of the completed Work.

1.5 DELIVERY AND STORAGE

- A. Deliver materials to project site in new, original and unopened containers bearing manufacturer's name, trade name, and label analysis. Store in accordance with manufacturer's instructions.

1.6 PROJECT CONDITIONS

- A. Relative Humidity: Do not apply epoxy floor coatings when relative humidity exceeds manufacturer's recommendations.
- B. Air and Surface Temperatures: Do not apply epoxy floor coatings when air and surface temperatures are not in accordance with manufacturer's recommendations.
- C. Do not apply epoxy floor coatings to damp or wet surfaces.
- D. Ventilation: Provide ventilation during epoxy floor coating installation and curing in confined or enclosed areas in accordance with manufacturer's instructions.
- E. Dust and Contaminants: Protect work areas from excessive dust and airborne contaminants during epoxy floor coating installation and curing.

1.7 COORDINATION

- A. Coordinate installation of new concrete slabs to allow time for concrete to cure for 28 days prior to installation of epoxy floor coatings.

PART 2 - PRODUCTS

2.1 EPOXY FLOOR COATING (TREP)

- A. Manufacturer: Subject to compliance with requirements, provide Tnemec Series 224 "Deco-Fleck" trowelled epoxy floor coating with acrylic chips or approved equal from one of the following:
 1. Tnemec
 2. Diamond Polymers
 3. Stonehard

B. MATERIALS

1. Radius Cove: Tnemec Series 215 Surfacing Epoxy up to ½" thickness with the addition of Series 211-211.
2. Repair Material: Tnemec Series 215 Surfacing Epoxy as needed.
3. Prime Coat: Series 280 Tneme-Glaze at 8.0-10.0 mils DFT.
4. Decorative Flake: Tnemec Series S224V507C.
5. Finish Coat: Tnemec Series 256 Excellathane at 8.0-10.0 mils DFT.
6. Finish Coat/Glass Bead Size: As selected by Architect from manufacturer's full line.

PART 3 - EXECUTION

3.1 PREPARATION

- A. General: Prepare substrates according to SSPC-SP13/ICRI 2-4 Surface Preparation of Concrete and manufacturer's written recommendations to ensure adhesion of floor coverings.
 1. Proceed with installation only after unsatisfactory conditions have been corrected.
- B. Substrates with Existing TREP Coatings:
 1. Diamond grind to uniformly abrade existing floor to create a rough surface to receive new coating. Level any uneven areas or surface imperfections.
- C. Concrete Substrates: Prepare according to ASTM F 710.
 1. Verify that substrates are dry and free of curing compounds, sealers, and hardeners.
 - a. Allow new concrete to cure for 28 days.
 2. Alkalinity and Adhesion Testing: Perform tests recommended by manufacturer. Proceed with installation only after substrates pass testing.
 3. Moisture Testing:
 - a. Perform anhydrous calcium chloride test, ASTM F 1869. Proceed with installation only after substrates have a maximum moisture-vapor-emission rate of 3 lb of water/1000 sq. ft. (1.36 kg of water/92.9 sq. m) in 24 hours or have a maximum moisture-vapor-emission rate as recommended by the epoxy floor coating manufacturer.
- D. Mechanically abrade all concrete by means of self-contained, blasting equipment or equal, to remove all laitance and surface contaminants and provide a minimum profile as recommended by epoxy floor coating manufacturer. Comply with ASTM D 4259 and SSPC-SP13.
- E. After mechanically abrading, verify that all surfaces are clean, dry and free of any contaminants, which could adversely affect the adhesion of the flooring system.
- E. Apply stippling epoxy and glass bead as directed to maximize anti slip surfaces in accordance with manufacturers product data sheets and application guides.

3.2 INSTALLATION

- A. Install epoxy floor coating using method indicated in strict compliance with manufacturer's written instructions. Extend flooring into toe spaces, door reveals, and into closets and similar openings.
- B. Install cove bases and terminate edges according to manufacturer's written instructions.
- C. Fit epoxy floor coating to permanent fixtures, built-in furniture and cabinets, pipes, outlets and permanent columns, walls and partitions.
- D. Install epoxy floor coating using roller nap size as indicated in manufacturer's written instructions and incorporate glass bead as necessary to provide anti-slip surfaces to match approved samples and mockups.

3.3 PROTECTION

- A. Protect the completed work from water, airborne particles or other surface contaminants until cured for a minimum of 24 hours after application.
- B. Protect from traffic, physical abuse, immersion and chemical exposure until the complete system has thoroughly cured for 24 hours at 75°F. For different temperatures, consult the manufacturer's representative about curing times.

****END OF SECTION****

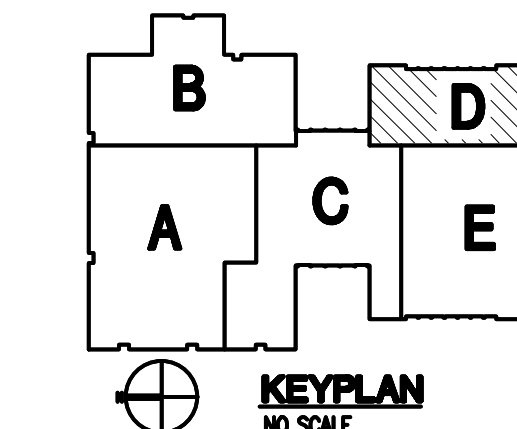
REGISTRATION SEAL

CONSULTANT

PROJECT TITLE
West Maple Elementary French School Remodeling

Birmingham Public Schools
Bloomfield Hills, Michigan

DRAWING TITLE
First Level Floor Plan - Zone 'D'



ISSUE DATES

12-15-17	ADDENDUM NO. 3
12-04-17	BIDS
10-20-17	CD OWNER REVIEW
05.12.17	CD ESTIMATE

DATE ISSUED FOR:

DRAWN: AKW
CHECKED: JMM
APPROVED: JUC

PROJECT NO.

15104A

DRAWING NO.

A1.1D

KEYNOTES

- PATCH GAP IN FIN TUBE COVER WITH FORMED 18 GA. METAL COVER PLATE. WIDTH SHALL BE OPENING WIDTH PLUS 2". FIELD HENRY OPENING WIDTH PRIOR TO FABRICATION. SECURE COVER PLATE TO EXISTING COVER WITH ROUND HEAD MACHINE SCREWS. DRILL AND TAP MOUNTING HOLES. SEE MECHANICAL DRAWINGS FOR ADDITIONAL INFORMATION.
- SEAL ALL GAPS AND FIRESTOP ALL PENETRATIONS IN FIRE BARRIER, TYP.
- 1 1/2" DIA. STEEL PIPE HANDRAIL, PAINTED.
- PROVIDE TOOLED CONTROL JOINTS AT 5'-0" O.C. MAX., TYPICAL.
- 4" THICK CONCRETE SIDEWALK ON 4" COMPACTED GRANULAR FILL, SEE SPECIFICATIONS.
- SHORTEN EXISTING COLUMN TO BEAR ON NEW WIDE FLANGE BEAM AND PLATE OVER NEW ENTRY @ EXTERIOR WALL WIDE FLANGE WITH BEAM TO BE INFILLED WITH BRICK AND CMU MASONRY, EACH SIDE.
- SURFACE MOUNTED CABINET UNIT HEATER, SEE MECHANICAL FOR MORE INFORMATION.
- CHAINLINK FENCE, MATCH HEIGHT OF EXISTING ADJACENT FENCE.
- NEW FOUNDATION WALLS, FOOTING, AND CONCRETE SLAB.
- MATCH ELEVATION OF SIDEWALK WITH TOP OF EXISTING PAVEMENT.
- ALIGN FENCE POST WITH EXISTING FENCE.

WALL / PARTITION KEY

- EXISTING WALL CONSTRUCTION
- METAL STUD PARTITION
- CONCRETE MASONRY UNIT WALL w/ HORIZONTAL JOINT REINFORCEMENT AT 16" O.C.
- CAST-IN-PLACE CONCRETE WALL (REFER TO STRUCTURAL FOR REINFORCING REQUIREMENTS)

WALL / PARTITION LEGEND

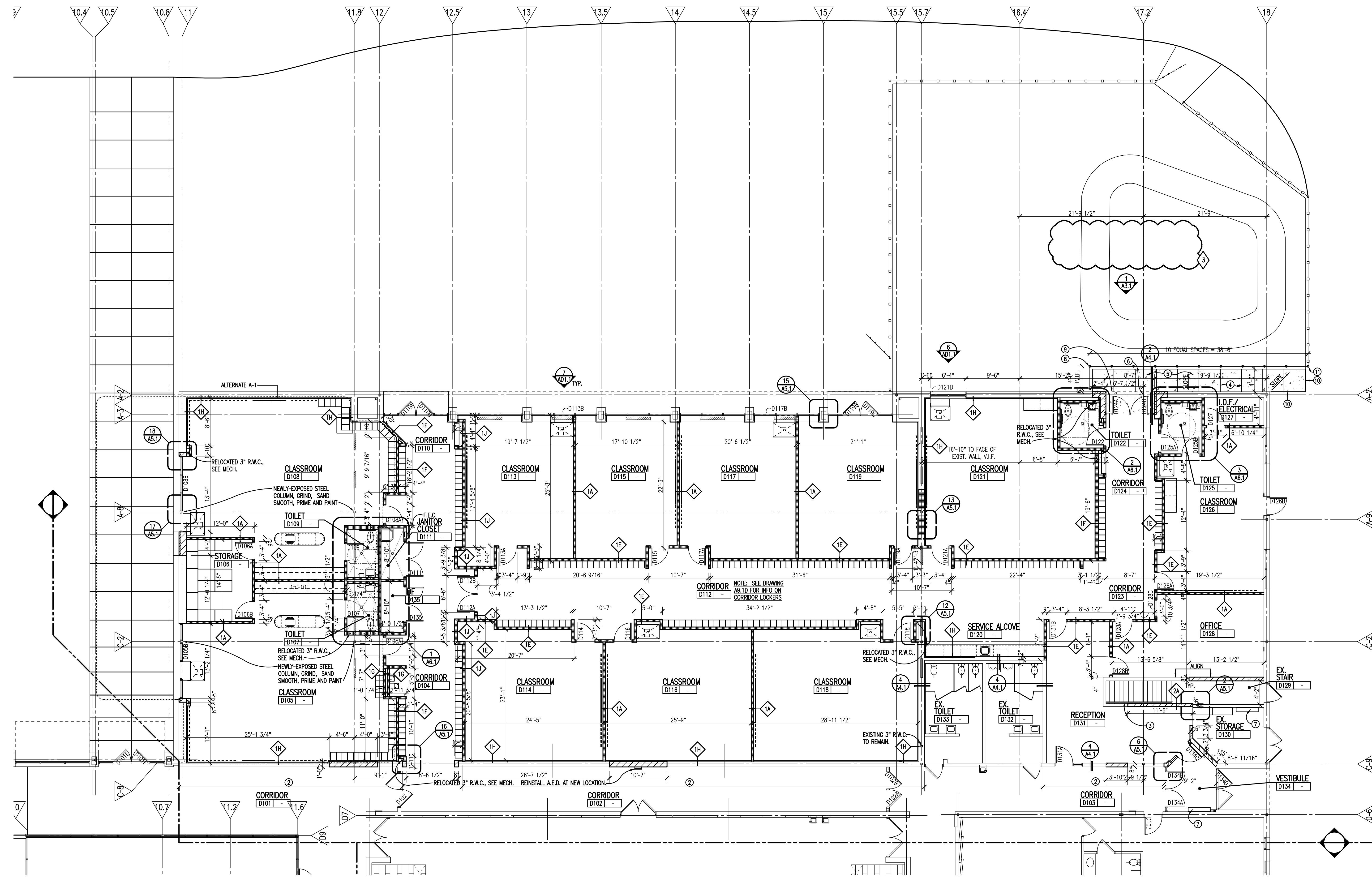
- 4" METAL STUDS AT 16" O.C. (MAX.) WITH 1 LAYER 5/8" GYPSUM BOARD EACH SIDE. 3" ACOUSTICAL BATT INSULATION FULL HEIGHT. HEIGHT: FROM FLOOR TO 4" ABOVE HIGHEST ADJACENT CEILING. BRACE TO ADJACENT WALLS AS REQUIRED. NOMINAL WIDTH: 5" (ACTUAL WIDTH: 5 1/4")
- 4" GALVANIZED METAL STUDS AT 16" ON CENTER (MAX) WITH 3" ACOUSTIC BATT INSULATION FULL HEIGHT. ON SIDE SCHEDULED TO RECEIVE EPOXY FINISH PROVIDE 5/8" MOISTURE RESISTANT GYPSUM BOARD FROM FLOOR TO 4" ABOVE HIGHEST ADJACENT CEILING. ON SIDE NOT SCHEDULED TO RECEIVE EPOXY FINISH PROVIDE 5/8" GYPSUM BOARD EXTENDING FROM FLOOR TO 4" ABOVE HIGHEST ADJACENT CEILING. BRACE TO ADJACENT WALLS AS REQUIRED.
- SAME AS 10 EXCEPT HEIGHT: FROM FLOOR TO DECK.
- PROVIDE 5/8" MOISTURE RESISTANT GYPSUM BOARD ONE SIDE. HEIGHT: FROM TOP OF FLOOR TO 4" ABOVE HIGHEST ADJACENT CEILING. BRACE TO ADJACENT WALLS AS REQUIRED.
- 4" METAL STUDS AT 16" O.C. (MAX.) WITH 1 LAYER 5/8" GYPSUM BOARD EACH SIDE. 3" ACOUSTICAL BATT INSULATION FULL HEIGHT. HEIGHT: FROM FLOOR TO DECK. NOMINAL WIDTH: 5" (ACTUAL WIDTH: 5 1/4")
- SAME AS 10 EXCEPT WITH 6" METAL STUDS IN LIEU OF 4"
- 4" METAL STUDS AT 16" O.C. (MAX.) WITH 1 LAYER 5/8" GYPSUM BOARD ONE SIDE. 3" ACOUSTICAL BATT INSULATION FULL HEIGHT. HEIGHT: FROM FLOOR TO DECK. NOMINAL WIDTH: 5" (ACTUAL WIDTH: 5 1/4")
- 5/8" GYPSUM BOARD ON 1 1/2" METAL "Z" FURRING AT 16" O.C. VERTICAL. HEIGHT: FROM FLOOR TO 4" ABOVE HIGHEST ADJACENT CEILING. FINISH EXPOSED ENDS AT OUTSIDE CORNERS BY RETURNING GYPSUM BOARD BACK TO WALL AND PROVIDE CONTINUOUS CASING BEAD TRIM AT JOINT.
- TWO LAYERS 5/8" TYPE "X" GYPSUM BOARD ON EACH SIDE OF 3 5/8" METAL STUDS AT 16" O.C. MAX. WITH 3" ACOUSTICAL BATT INSULATION FULL HEIGHT. (6" NOMINAL WIDTH; 6 1/8" ACTUAL WIDTH). HEIGHT: FROM FLOOR TO ROOF DECK. COPE AROUND STRUCTURE, MECH, ELEC. AND OTHER PENETRATIONS AND FIRE SAFE THOSE AND ALL GAPS. UL ASSEMBLY U419. DETAIL S/M4.2
- SAME AS 10 EXCEPT WITH 6" METAL STUDS IN LIEU OF 4"

GENERAL NOTES

- COORDINATE SIZE AND LOCATION OF ALL ACCESS PANELS WITH TRADE REQUIRING THE SAME. ACCESS PANELS ARE SPECIFIED ARCHITECTURALLY BUT ARE REQUIRED TO BE PROVIDED BY EACH TRADE. ALL LOCATIONS MUST BE COORDINATED AND APPROVED BY THE ARCHITECT'S FIELD REPRESENTATIVE.
- CONTRACTORS SHALL VERIFY ALL EXISTING BUILDING DIMENSIONS, PARTITION AND WALL LOCATIONS, AND FLOOR ELEVATIONS IN THE FIELD AND NOTIFY THE ARCHITECT'S REPRESENTATIVE OF ANY DISCREPANCIES BEFORE START OF WORK.
- FLOOR PLANS ARE DIMENSIONED TO NOMINAL WALL THICKNESS - TYPICAL.
- DIMENSIONS FOLLOWED BY ± SHALL BE REVIEWED AND ALL NECESSARY ADJUSTMENTS MADE PRIOR TO FABRICATION AND/OR INSTALLATION OF AFFECTED WORK. NOTIFY ARCHITECT'S REPRESENTATIVE IF DISCREPANCIES ARISE BEFORE PROCEEDING WITH THE WORK.
- PROVIDE INTERIOR CMU AND GYPSUM BOARD CONTROL JOINTS AT BOTH JAMBS OF DOORS, WINDOWS, AND OPENINGS. PROVIDE AT HEAD AND SILL OF WINDOWS AND PASS THRU OPENINGS.
- PROVIDE CONTROL JOINTS WHERE INTERIOR CMU (ON SLAB) ABUTS EXTERIOR/INTERIOR MASONRY (ON FOUNDATIONS OR FOOTINGS).
- VERIFY QUANTITY, SIZE, AND LOCATION OF ALL FLOOR, ROOF, AND WALL OPENINGS FOR MECHANICAL AND ELECTRICAL WORK WITH THE APPROPRIATE TRADE. PROVIDE ALL OPENINGS SHOWN OR REQUIRED FOR THE COMPLETION OF THE WORK. PROVIDE ALL UNITS REQUIRED FOR THESE OPENINGS PER SPECIFICATIONS.
- REFER TO LIFE SAFETY PLANS FOR LOCATIONS OF REQUIRED FIRE RESISTANCE RATINGS. BECAUSE OF THE DRAWING SCALE OF THE LIFE SAFETY PLANS, COORDINATE THE REQUIRED FIRE RESISTANCE RATINGS WITH THOSE SHOWN ON THE REFLECTED CEILING PLANS.
- REFER TO REFLECTED CEILING PLANS FOR EXTENSION OF PARTITION WALLS TO FLOOR OR ROOF CONSTRUCTION ABOVE AND WALL FIRE RESISTANCE RATING REQUIREMENTS.
- REFER TO A10 SERIES DRAWINGS FOR FLOOR FINISH PATTERNS AND ROOM FINISHES.
- REFER TO DRAWING A4.1 FOR TYPICAL DETAILS PERTAINING TO WALL TERMINATIONS AT STRUCTURE ABOVE AND MASONRY CONTROL JOINT DETAILS.
- VERIFY ALL DIMENSIONS IN FIELD.
- PROVIDE WOOD BLOCKING WITHIN STUD WALLS FOR WALL MOUNTED ITEMS, I.E., TOILET ACCESSORIES, RECESSED MECHANICAL EQUIPMENT, WALL STOPS, ETC. REFER ALSO TO A9 SERIES AND A5 SERIES DRAWINGS.
- REFER TO EXTERIOR ELEVATIONS AND PLAN DETAILS FOR LOCATIONS OF CONTROL JOINTS IN EXTERIOR WALLS.

PATCHING NOTES

- REFER TO DEMOLITION PLANS FOR ADDITIONAL PATCHING NOTES.
- FOR ALL FLOOR SURFACES RECEIVING NEW FLOOR FINISHES, PREPARE SUBSTRATE BY PROVIDING LEVELING AND PATCHING COMPOUNDS RECOMMENDED BY FINISH FLOORING MANUFACTURERS. CONTRACTOR'S BASE BID PROPOSAL SHALL ASSUME THAT ALL AREAS, INDICATED TO RECEIVE NEW FINISHES, WILL REQUIRE FLOOR PREPARATION.
- PATCH AND REPAIR ALL FLOOR AND WALL SURFACES LEFT DAMAGED OR INCOMPLETE FROM REMOVAL OF EXISTING PARTITIONS, MILLWORK, CASWORK, CHALKBOARDS, TACKBOARDS, DISPLAY CASES OR OTHER FIXED EQUIPMENT WITH MATERIALS TO MATCH EXISTING, AS ACCEPTABLE TO THE ARCHITECT.
- MATCH EXISTING MASONRY COURSING ADJACENT IN EACH AREA AND TOOTH NEW WORK INTO EXISTING, UNLESS OTHERWISE INDICATED.
- AT EXISTING FLOOR FINISHES TO REMAIN, THAT BECOME SUBSTRATES FOR NEW FLOOR FINISHES, PATCH AND FILL EXISTING AS REQUIRED TO PREPARE FOR NEW FLOOR FINISH UNTIL ACCEPTABLE TO NEW FLOOR FINISH CONTRACTOR.
- TOOTH-IN MASONRY INTO EXISTING, U.O.N., INCLUDING JAMBS OF DOOR AND OTHER OPENINGS.
- SEE S1.1D FOR EXTENT OF FLOOR PATCHING AND PREP WORK.



FIRST LEVEL FLOOR PLAN - ZONE 'D'
SCALE: 1/8" = 1'-0"

REGISTRATION SEAL

CONSULTANT

PROJECT TITLE
**West Maple
Elementary French
School Remodeling**

**Birmingham Public Schools
Bloomfield Hills, Michigan**

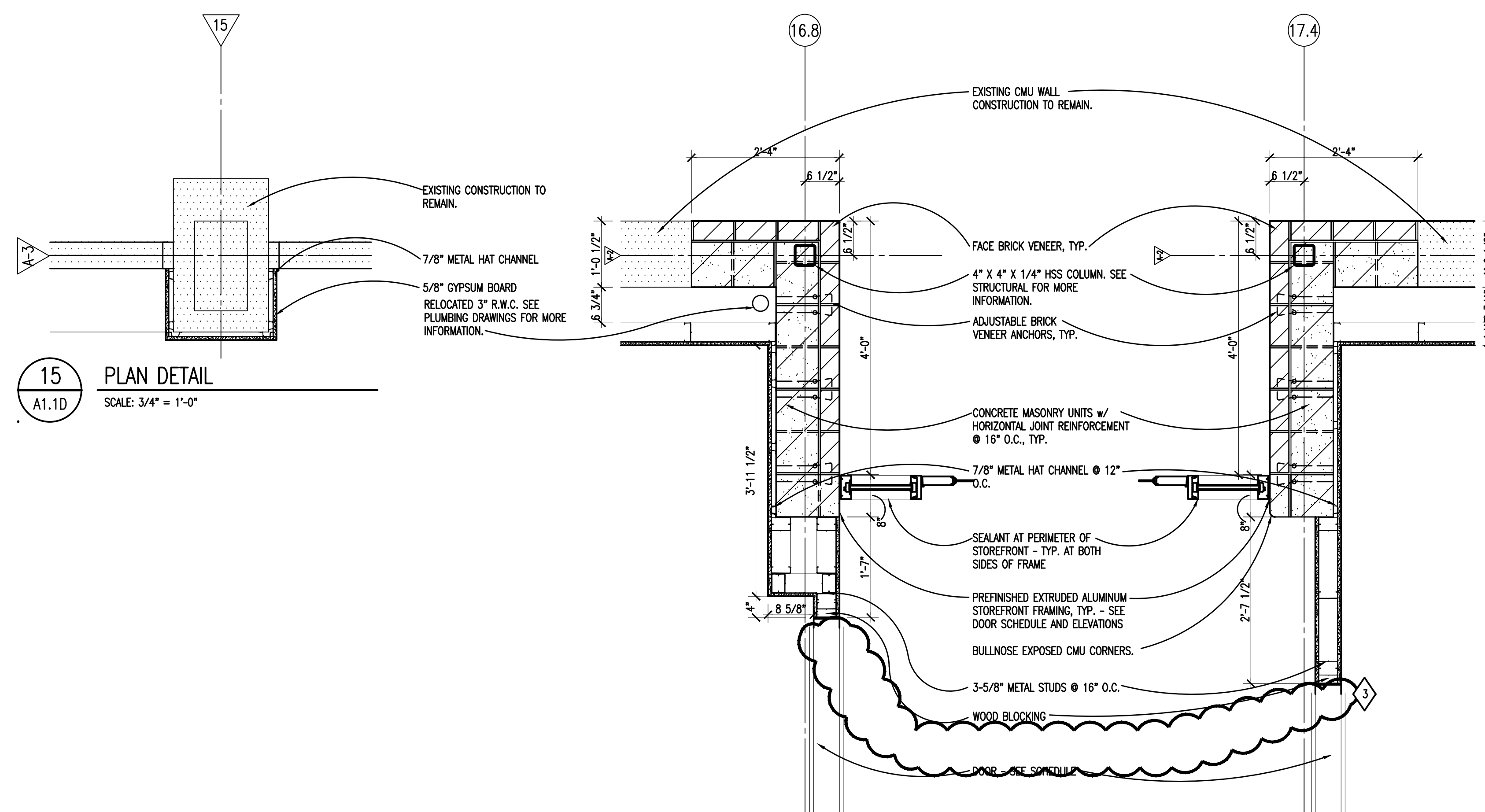
DRAWING TITLE
Plan Details

ISSUE DATES

12-15-17	ADDENDUM NO. 3
12-04-17	BIDS
10-20-17	CD OWNER REVIEW
02.24.17	DD ESTIMATE
DATE	ISSUED FOR:
DRAWN	AKW
CHECKED	JMM
APPROVED	JJC

PROJECT NO.
15104A

DRAWING NO.
A5.1



15 PLAN DETAIL
SCALE: 3/4" = 1'-0"
A1.1D

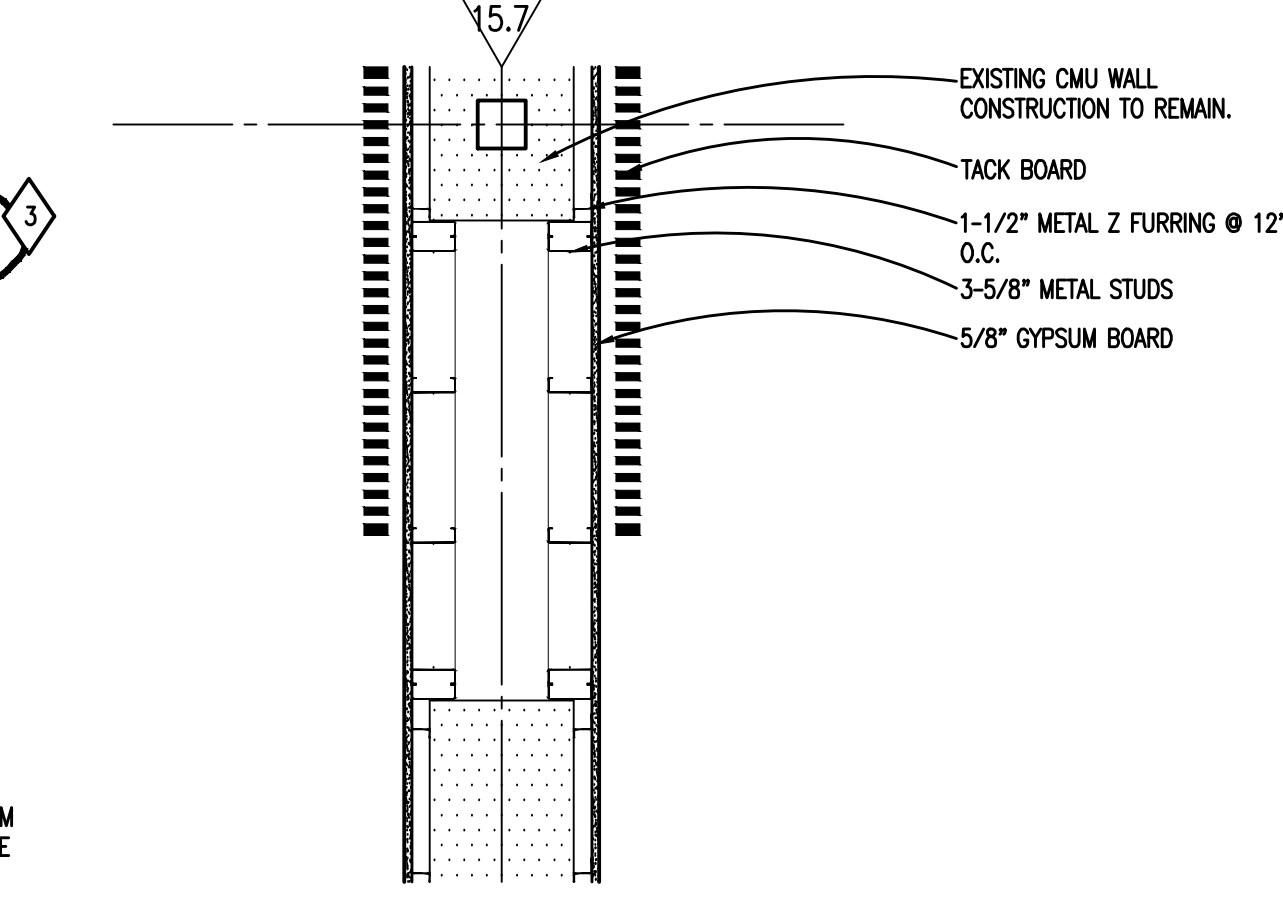
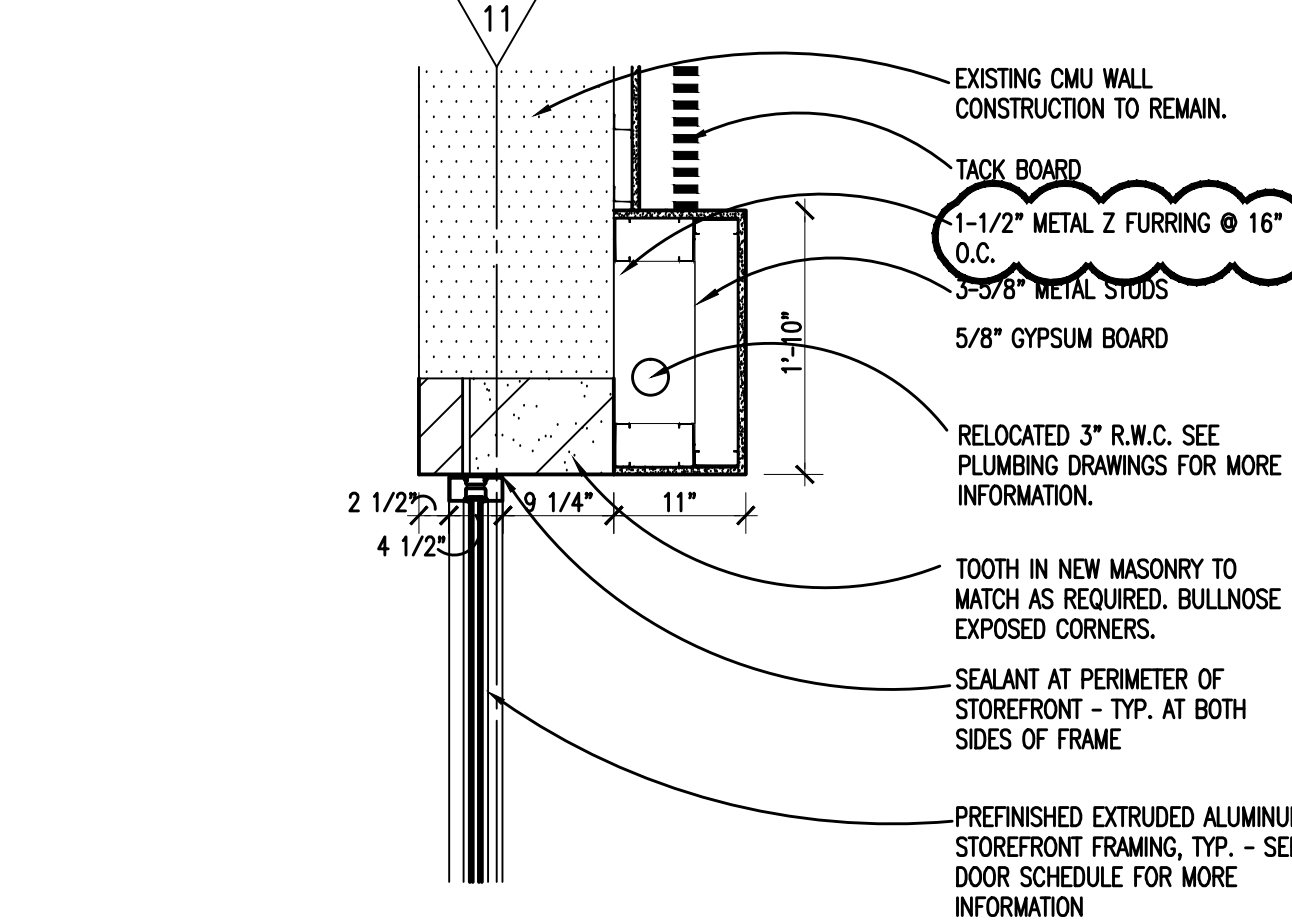
9 PLAN DETAIL
SCALE: 3/4" = 1'-0"
A1.1D

4 PLAN DETAIL
SCALE: 3/4" = 1'-0"
A1.1D

20 PLAN DETAIL
SCALE: 3/4" = 1'-0"
A

19 PLAN DETAIL
SCALE: 3/4" = 1'-0"
A

14 PLAN DETAIL
SCALE: 3/4" = 1'-0"
A

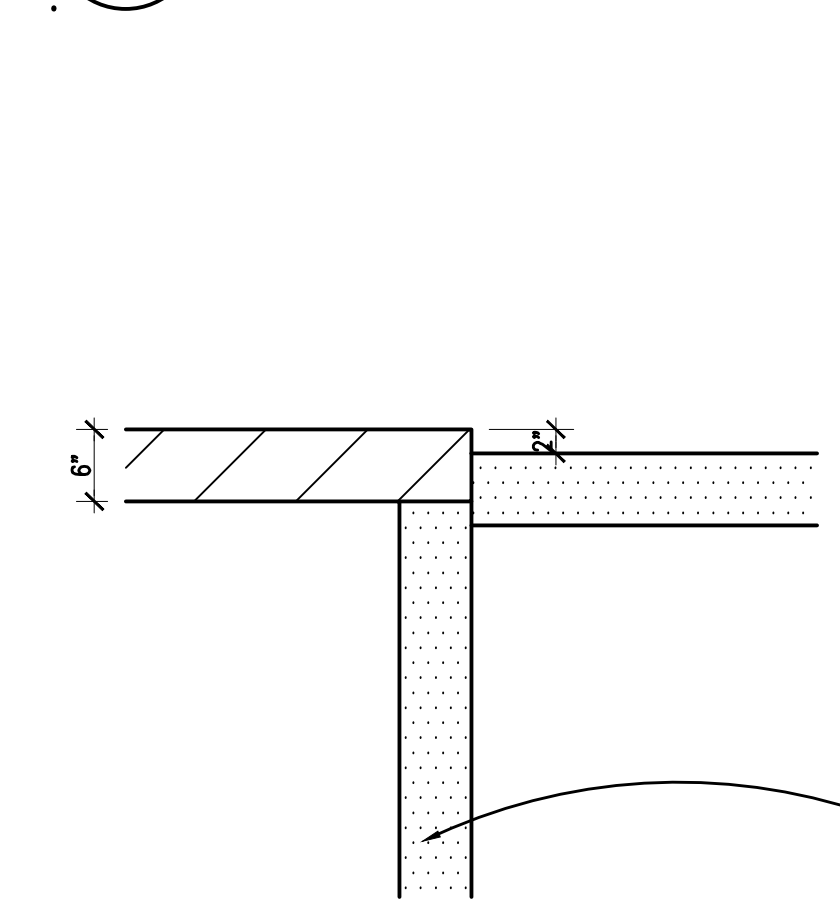
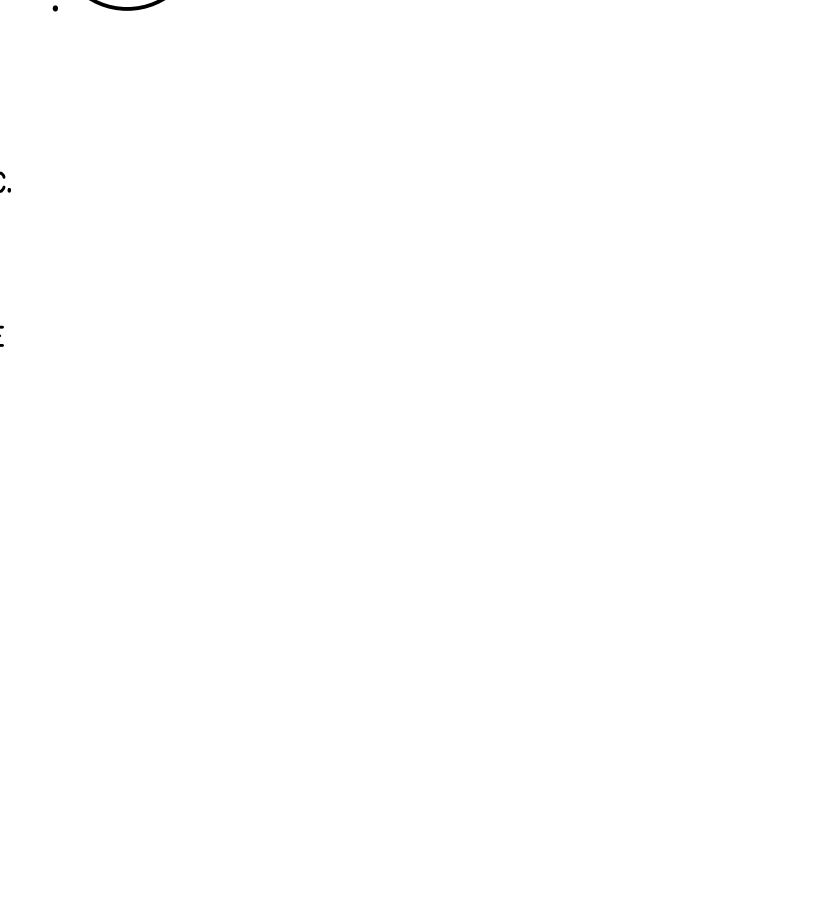
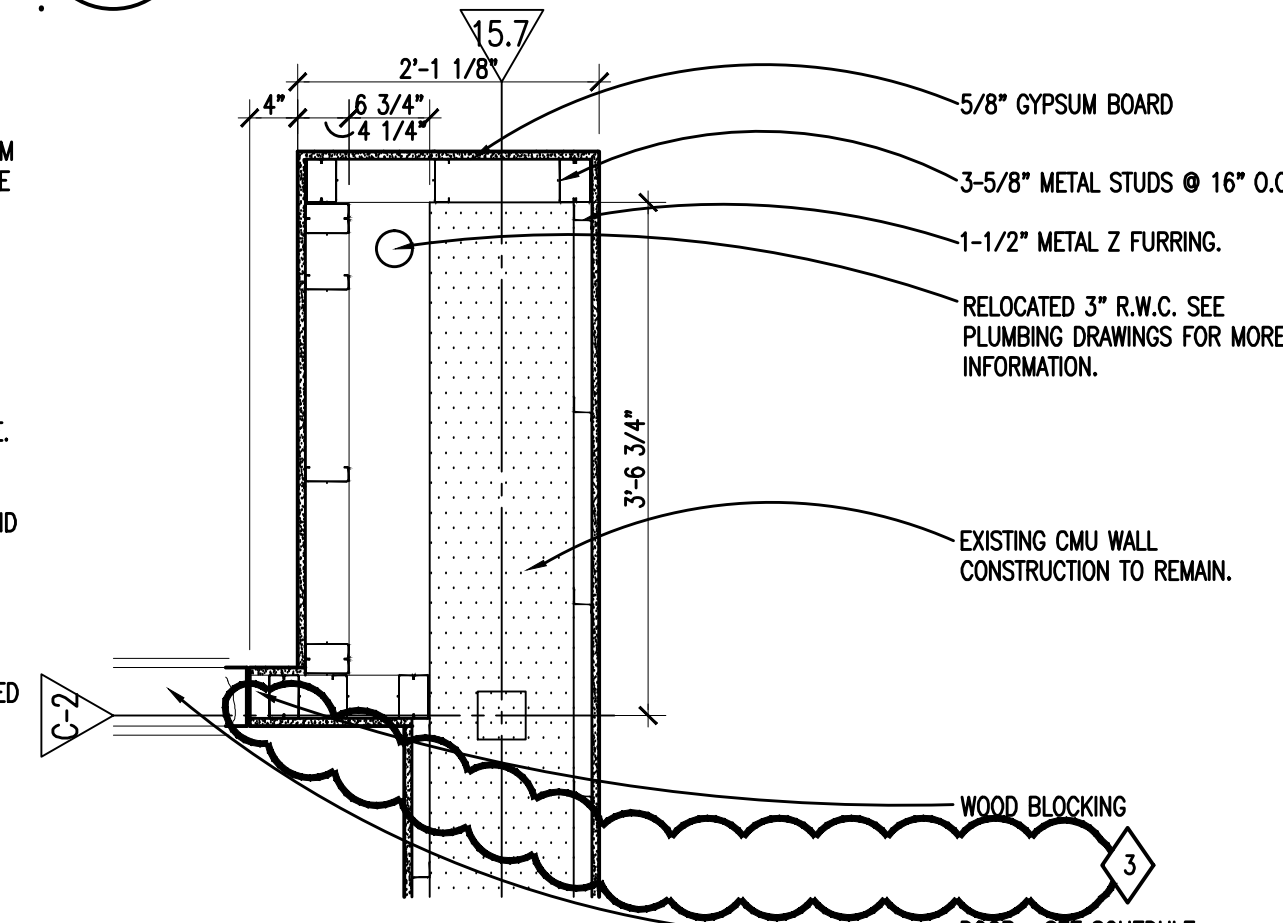
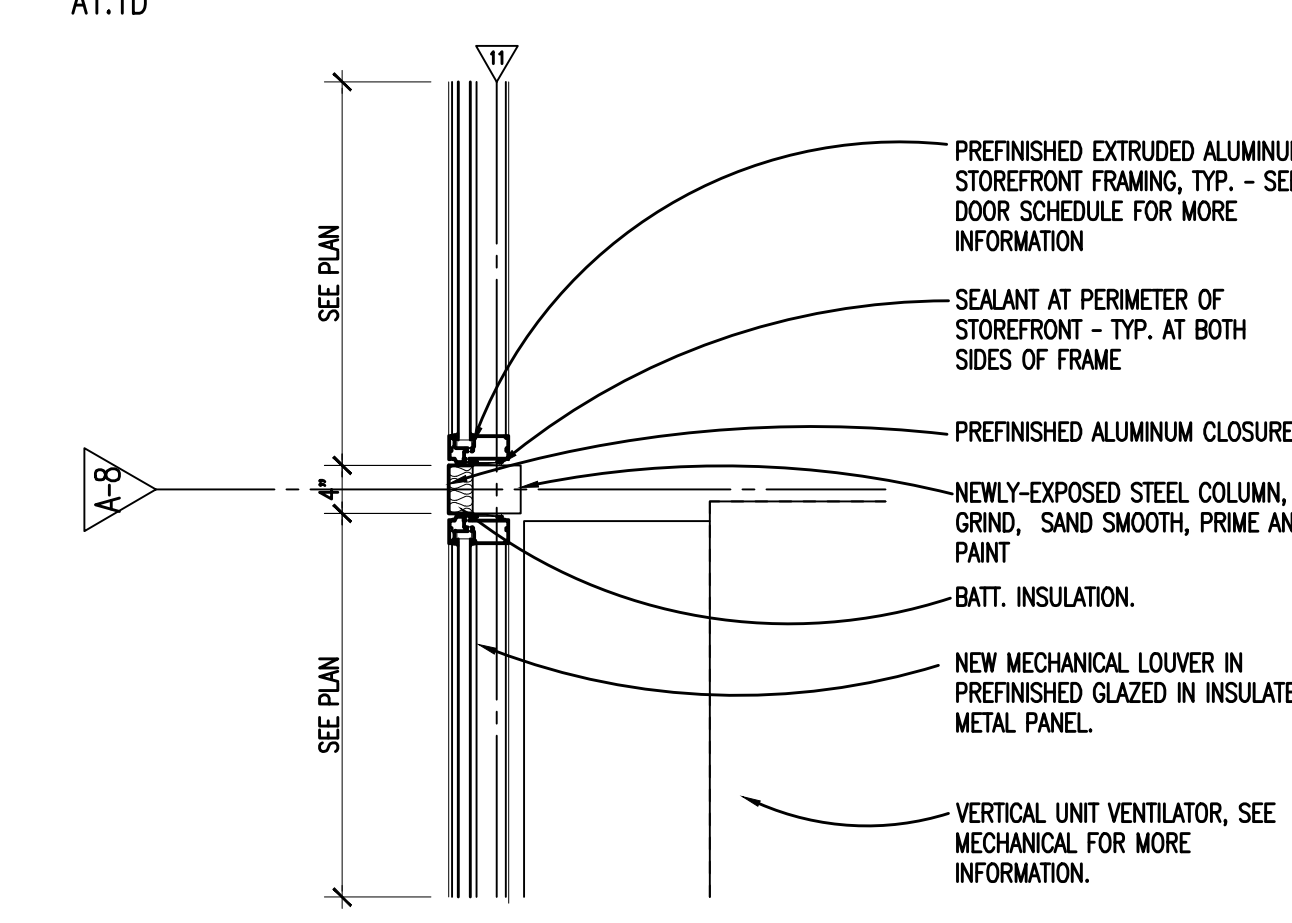


18 PLAN DETAIL
SCALE: 1 1/2" = 1'-0"
AD.1
A1.1D

13 PLAN DETAIL
SCALE: 3/4" = 1'-0"
A1.1D

8 PLAN DETAIL
SCALE: 3/4" = 1'-0"
A

3 PLAN DETAIL
SCALE: 3/4" = 1'-0"
A

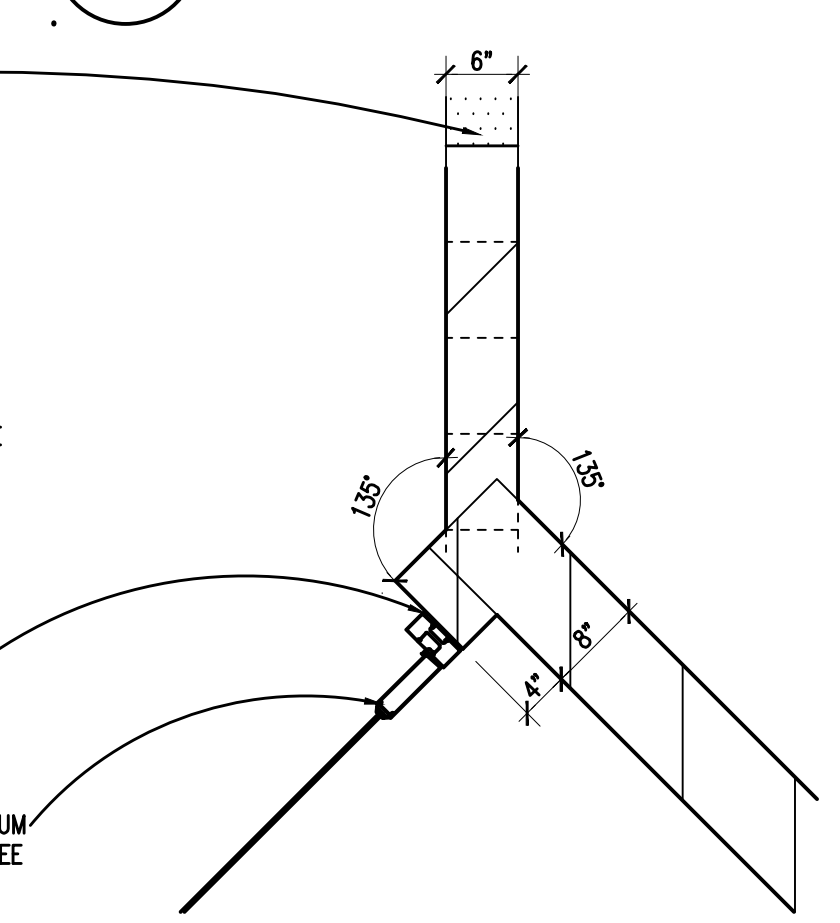
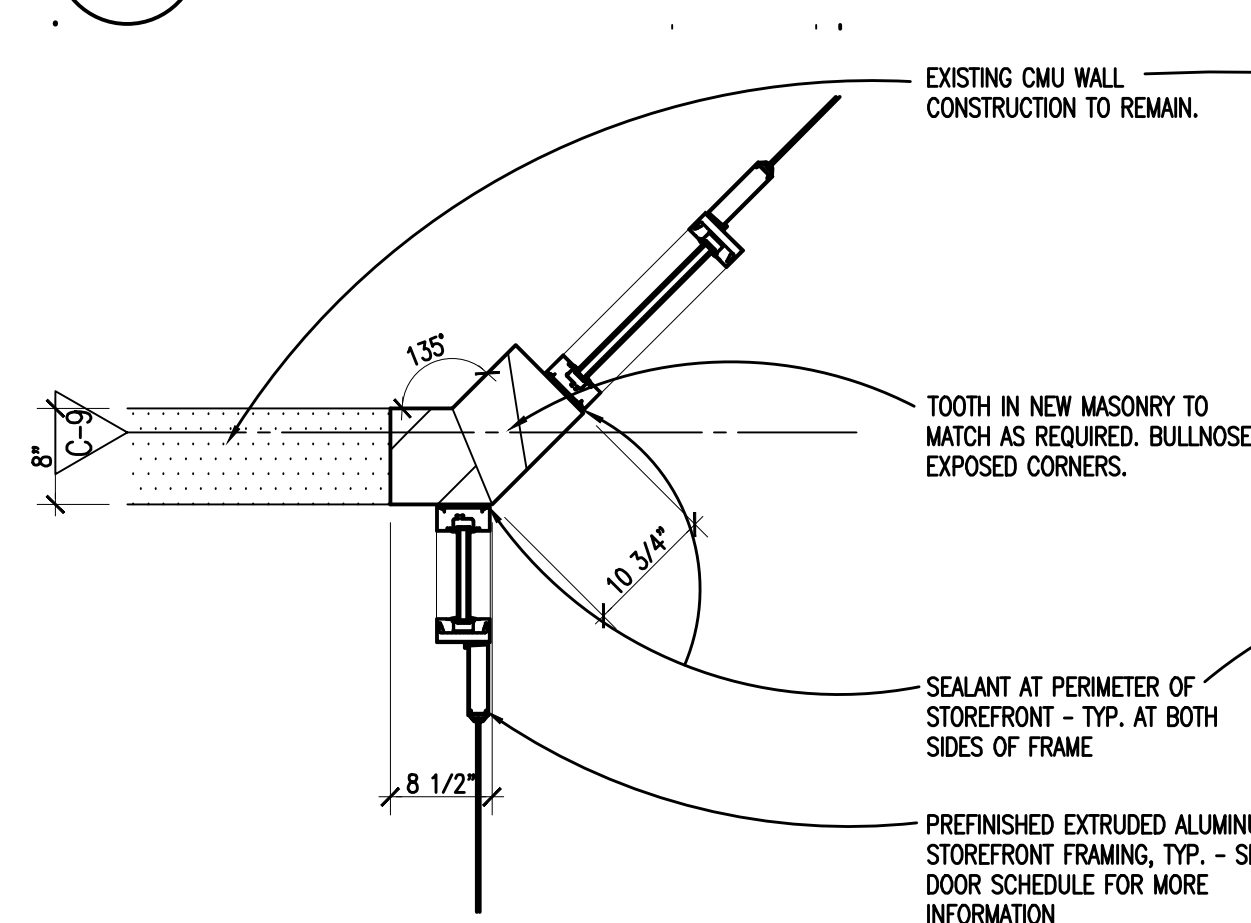
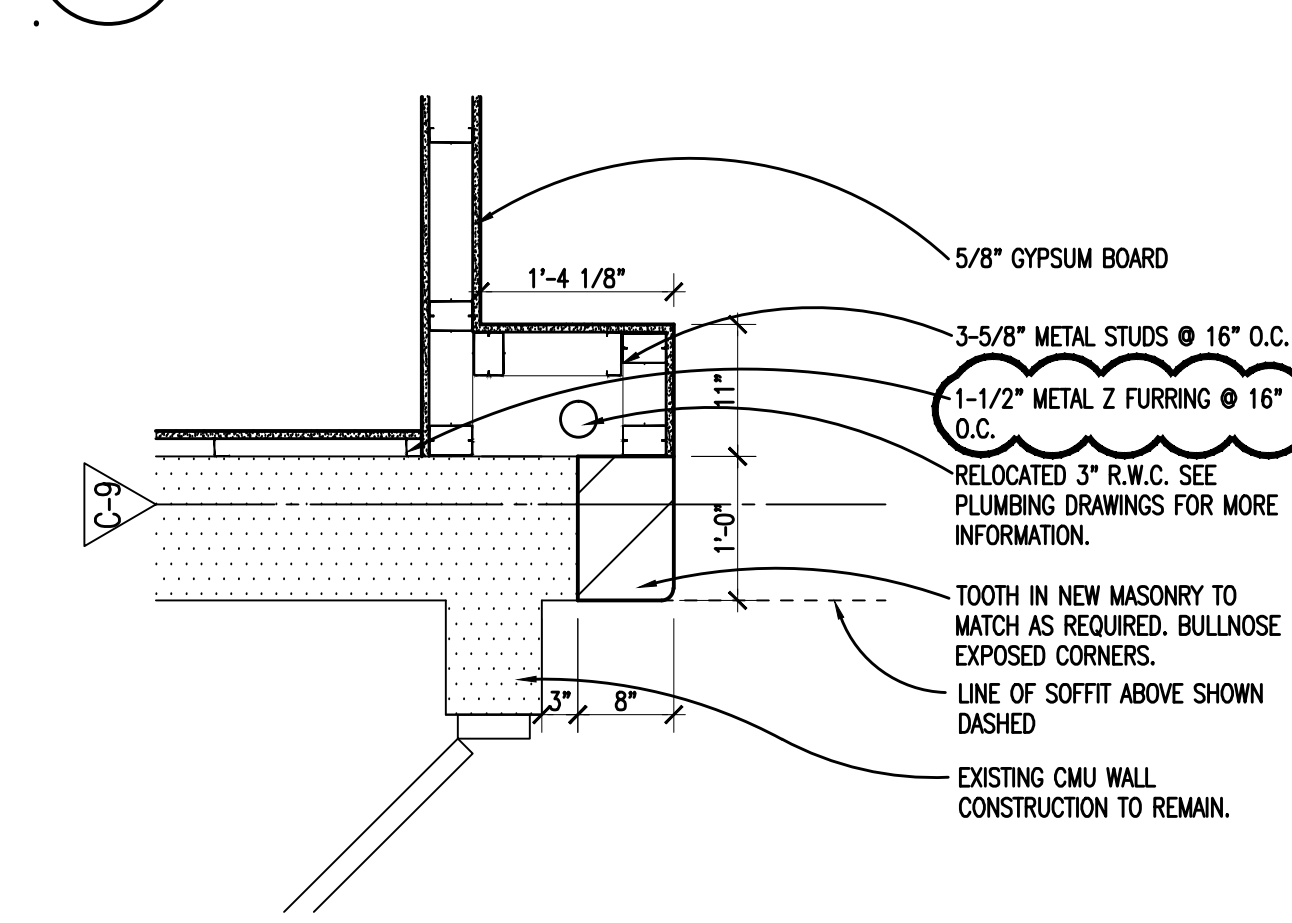


17 PLAN DETAIL
SCALE: 3/4" = 1'-0"
AD.1

12 PLAN DETAIL
SCALE: 3/4" = 1'-0"
A1.1D

7 PLAN DETAIL
SCALE: 3/4" = 1'-0"
A

2 PLAN DETAIL
SCALE: 3/4" = 1'-0"
A1.1D



16 PLAN DETAIL
SCALE: 3/4" = 1'-0"
A1.1D

11 PLAN DETAIL
SCALE: 3/4" = 1'-0"
A

6 PLAN DETAIL
SCALE: 3/4" = 1'-0"
A

1 PLAN DETAIL
SCALE: 3/4" = 1'-0"
AD.1

25 PLAN DETAIL
SCALE: 3/4" = 1'-0"
A

24 PLAN DETAIL
SCALE: 3/4" = 1'-0"
A

23 PLAN DETAIL
SCALE: 3/4" = 1'-0"
A

22 PLAN DETAIL
SCALE: 3/4" = 1'-0"
A

21 PLAN DETAIL
SCALE: 3/4" = 1'-0"
A



TMP ARCHITECTURE INC
 1191 WEST SQUARE LAKE ROAD
 BLOOMFIELD HILLS - MICHIGAN - 48302
 TEL - 248.338.6641 FAX - 248.338.0223
 EM - INFO@TMP-ARCHITECTURE.COM

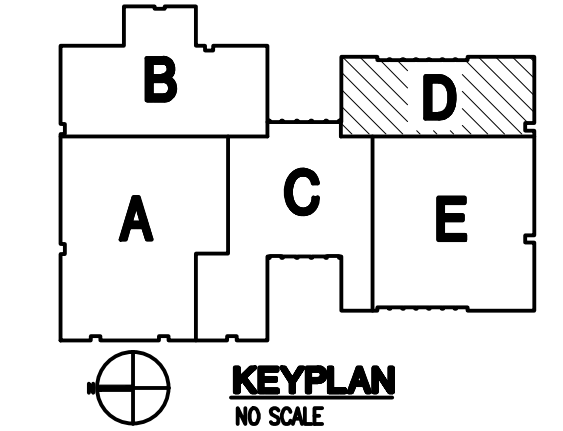
REGISTRATION SEAL

CONSULTANT

PROJECT TITLE
West Maple Elementary French School Remodeling

Birmingham Public Schools
 Bloomfield Hills, Michigan

Casework and Equipment Plan -
 Zone 'D'



ISSUE DATES

12-15-17	ADDENDUM NO. 3
12-04-17	BIDS
10-20-17	CD OWNER REVIEW
05.12.17	DD ESTIMATE

DATE	ISSUED FOR:
DRAWN	AKW
CHECKED	JMM
APPROVED	JJC

PROJECT NO.
15104A
 DRAWING NO.
A9.1D

LEGEND

- FLAT PANEL DISPLAY (N.I.C.) & WALL MOUNT (N.I.C.).
- * WALL MOUNTED FENCIL SHARPENER (P.S.) @ 48" A.F.F. (FURNISHED BY OWNER, INSTALLED BY CONTRACTOR)
- FIRE EXTINGUISHER ON WALL BRACKET (F.E.)

MARKERBOARD/TACKBOARD NOTES

TYPE OF BOARD: 6'-0" T.B.
 WIDTH OF BOARD

NOTES:

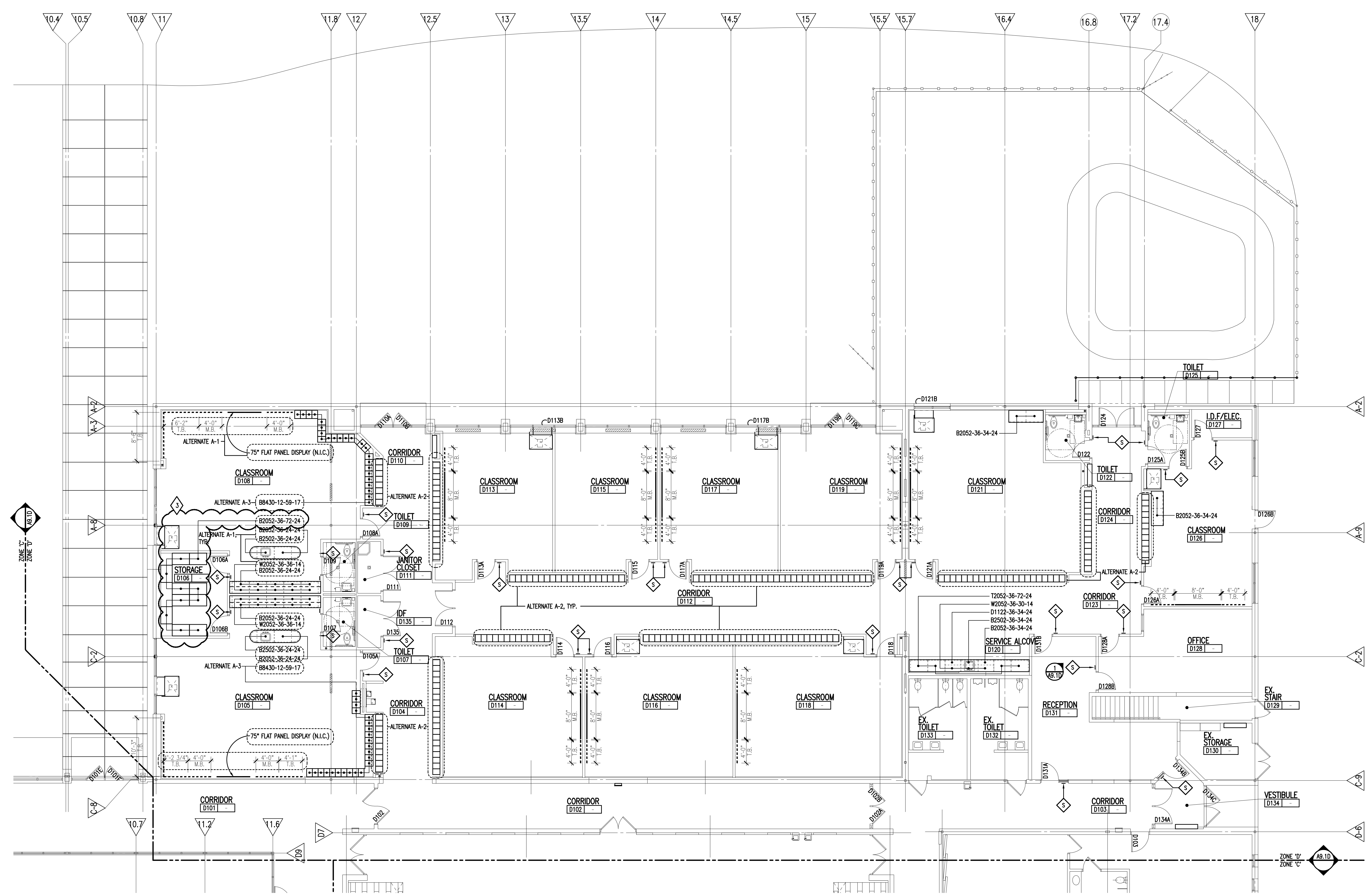
- T.B. = TACKBOARD
 M.B. = MARKERBOARD
- MOUNTING HEIGHTS OF T.B./M.B./C.B.:
 - 1'-0" A.F.F. @ KINDERGARTEN CLASSROOMS
 - 2'-6" A.F.F. @ 1ST-5TH CLASSROOMS
- MAP RAILS TO BE CONTINUOUS OVER MARKERBOARDS, CHALKBOARDS AND ADJACENT TACKBOARDS.
- ALL MARKERBOARDS/ CHALKBOARDS TO BE PROVIDED WITH TRAYS (EXCEPT WHERE INDICATED THUSLY (*))
- HEIGHT OF ALL BOARDS ARE 6'-0" (U.O.N.).

CASEWORK NOTES

- ALL PREFABRICATED CABINETS INDICATED ARE BASED ON TMI STORAGE SYSTEMS CORPORATION PRODUCTS. REFER TO TMI CATALOG FOR TYPICAL NUMBERING FORMAT.
- ALL TMI CABINETS ARE DESIGNATED USING THE TYPICAL TMI ELEVEN 11 DIGIT NOTATION SYSTEM. THE FIRST FIVE DIGITS ARE THE MODEL NUMBER FOLLOWED BY THREE SETS OF TWO DIGIT NUMBERS FOR THE WIDTH, HEIGHT AND DEPTH.
- WIDTH, HEIGHT AND DEPTH OF PREFABRICATED CABINETS IS INDICATED IN INCHES UNLESS NOTED OTHERWISE. MODEL DIMENSIONS ARE NOMINAL UNLESS SPECIFICALLY NOTED. "00000-00-00-00-M" INDICATES MODIFIED CASEWORK.
- PROVIDE PLASTIC LAMINATE COUNTERTOPS (WITH BACK/END SPLASHES) AT ALL BASE CABINETS AND RADIUS ALL OUTSIDE CORNERS (U.O.N.).
- FINISH ALL EXPOSED SURFACES OF CASEWORK, TYPICAL.
- WALL CABINETS (OVER COUNTERS) ARE TYPICALLY MOUNTED AT 7'-0" A.F.F. TO TOP (U.O.N.).
- PROVIDE FINISHED END PANELS ON ALL EXPOSED CASEWORK ENDS.
- PROVIDE RESTRAINING CHAINS ON ALL END BASE AND WALL CABINET DOORS WHICH OPEN AGAINST PERPENDICULAR WALLS.
- WHERE CASEWORK IS HELD AWAY FROM WALLS, TO FLUSH-OUT WITH ADJACENT CABINETS, SCRIBE END/FILLER PANELS TO WALLS.
- PROVIDE FILLER PANELS WHERE SHOWN AND/OR OTHERWISE REQUIRED FOR A COMPLETE INSTALLATION.
- PROVIDE LOCKS AT ALL CABINET DOORS AND DRAWERS (U.O.N.).
- MODIFY SINK BASE CABINETS AS REQUIRED TO ACCOMMODATE OVERSIZED SINKS (SEE MECHANICAL).
- WHERE 6" F. 34" HIGH BASE CABINETS ARE INDICATED, MODIFY CABINET CONSTRUCTION BY REDUCING THE HEIGHT OF ALL COMPARTMENTS EQUALLY (INDICATE ON SHOP DWGS.).
- PROVIDE INTERMEDIATE PLASTIC LAMINATE CLAD SUPPORT PANELS @ 4'-0" O.C. MAXIMUM AT ALL UNSUPPORTED COUNTER TOPS (U.O.N.).
- PROVIDE GROMMETS AT ALL COUNTERS WITH KNEESPACES, WHERE POWER/DATA OUTLETS ARE LOCATED BELOW (REFER TO ELECTRICAL DRAWINGS FOR LOCATIONS). PROVIDE (1) ONE GROMMET PER KNEESPACE (U.O.N.). FINAL LOCATION(S) WILL BE MARKED-UP ON THE SHOP DRAWING SUBMITTAL.
- PROVIDE MOISTURE RESISTANT PARTICLE BOARD AT SINK BASE, COUNTERTOP, AND BACK AND SIDESPLASHES WITHIN 18" (MINIMUM) OF SINKS.

INTERIOR SIGNAGE

THIS IS AN INTERIOR SIGNAGE IDENTIFICATION, REFER TO DRAWING A9.2 FOR INTERIOR SIGNAGE TYPE AND SCHEDULED INFORMATION.



FIRST LEVEL CASEWORK PLAN - ZONE 'D'
 SCALE: 1/8" = 1'-0"

Drawing File: C:\Users\jmm\OneDrive\Documents\15104A\15104A.dwg
 Date: 10/18/2017 4:17pm

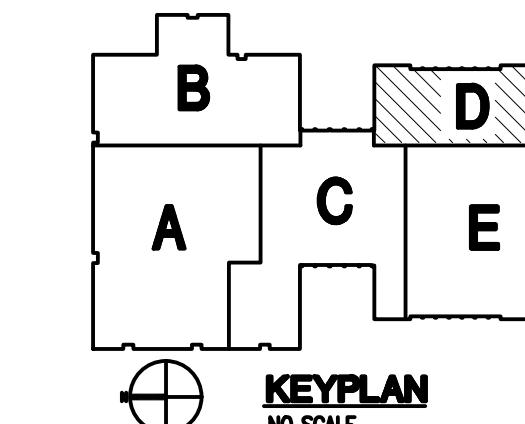
REGISTRATION SEAL

CONSULTANT

PROJECT TITLE
West Maple Elementary French School Remodeling

Birmingham Public Schools
Bloomfield Hills, Michigan

DRAWING TITLE
First Level Finish Floor Plan - Zone 'D'



ISSUE DATES

12-15-17	ADDENDUM NO. 3
12-04-17	BIDS
10-20-17	CD OWNER REVIEW
05.12.17	DD ESTIMATE

DATE: ISSUED FOR:

DRAWN: AKW/LMC

CHECKED: JMM

APPROVED: JJC

PROJECT NO.

15104A

DRAWING NO.

A10.1D

FINISH LEGEND

ROOM FINISH TAGS
ROOM NAME AND NUMBER PLUS GENERAL ROOM FINISH INFORMATION.
FINISH TAGS SHALL APPLY TO ALL LIKE MATERIALS WITHIN A ROOM (U.O.N.).

FINISH LEGEND IS GENERAL. REFER TO SPECIFICATIONS FOR SPECIFIC FINISH INFORMATION. MULTIPLE FINISH TYPES ARE DENOTED BY NUMBER FOLLOWING ABBREVIATION.

CLASSROOM ← ROOM NAME
D101 ← ROOM NUMBER
PT ← WALL FINISH (SEE BELOW)
RB ← BASE (SEE BELOW)
CPT ← FLOOR FINISH (SEE BELOW)

PT-P ← WALL FINISH (SEE BELOW)
RB ← BASE (SEE BELOW)
CPT-P ← FLOOR FINISH (SEE BELOW)

Ⓢ DENOTES PATTERN DETAIL.
REFER TO "SPECIFIC NOTES" BELOW

Ⓟ ← PLASTIC LAMINATE TYPE/COLOR (TAG APPLIES TO ALL CABINETS AND/OR COUNTERTOPS WITHIN THAT SPACE, U.O.N.)

WALLS

EP EPOXY PAINT
EX EXISTING (NO NEW FINISH)
PT PAINT

BASE

CT CERAMIC TILE
EX EXISTING (NO NEW FINISH)
NB NO BASE, WALL FINISH EXTENDS TO FLOOR
RB RESILIENT BASE
TREP TROLLED EPOXY
NB NO BASE

FLOORS

CONC CONCRETE (UNFINISHED)
CONCD CONCRETE - DECORATIVE/APPLIED FINISH
CONCS CONCRETE - WITH APPLIED SURFACE SEALER
CPT CARPET
CT CERAMIC TILE
EP EPOXY
EX EXISTING (NO NEW FINISH)
TREP TROLLED EPOXY

GENERAL NOTES

- REFER TO REFLECTED CEILING PLANS FOR CEILING TYPES, HEIGHTS AND FINISH INFORMATION.
- AT CERAMIC TILE LOCATIONS, INSTALLER TO USE APPROPRIATE TROWEL TO ACCOMMODATE DIFFERENT TILE THICKNESSES.
- REFER TO STRUCTURAL DRAWINGS FOR DERESSED SLAB LOCATIONS, INDICATIVE OF MURET BEDS AT CERAMIC TILE. SLOPE MURET TO DRAINS. REFER TO ARCHITECTURAL DRAWINGS FOR DRAIN ELEVATIONS AND LOCATIONS.
- PROVIDE ANTI-FRACTURE MEMBRANE AT ALL THINSET CERAMIC FLOOR TILE LOCATIONS, UNLESS OTHERWISE NOTED.
- PROVIDE RESILIENT BASE AT THE KICK OF ALL CASEWORK AND BEHIND ALL MOVABLE EQUIPMENT/APPLIANCES, WHEN SCHEDULED WITHIN A ROOM.
- ALL WALL MOUNTED MECHANICAL EQUIPMENT (DIFFUSERS, GRILLES, ETC.) AND ELECTRICAL EQUIPMENT (PANELS, ETC.) SHALL BE PAINTED TO MATCH THE ADJACENT WALL COLOR. REFER TO MECHANICAL AND ELECTRICAL DRAWINGS FOR QUANTITIES AND LOCATIONS.
- REFER TO SPEC. SECTION 01230 FOR COMPLETE LIST AND DESCRIPTION OF ALTERNATIVES.
- WHERE REMOVAL OR MODIFICATION TO A FINISH MATERIAL IS SHOWN, BUT NEW FINISHES ARE NOT SCHEDULED, PATCH AND REPAIR TO MATCH EXISTING FINISH CONDITION AS REQUIRED.
- PROVIDE APPROPRIATE TRANSITION STRIPS BETWEEN DISSIMILAR FLOORING MATERIALS AT VERTICAL AND/OR HORIZONTAL APPLICATIONS.
- CARPET, VINYL COMPOSITION TILE, VENTED BASE AND RUBBER BASE (N.I.C.) AND SHALL BE FURNISHED AND INSTALLED BY OWNER. FLOOR AND BASE SHOWN ON PLAN FOR REFERENCE ONLY.

SPECIFIC NOTES

-
-
-

WINDOW TREATMENT LEGEND

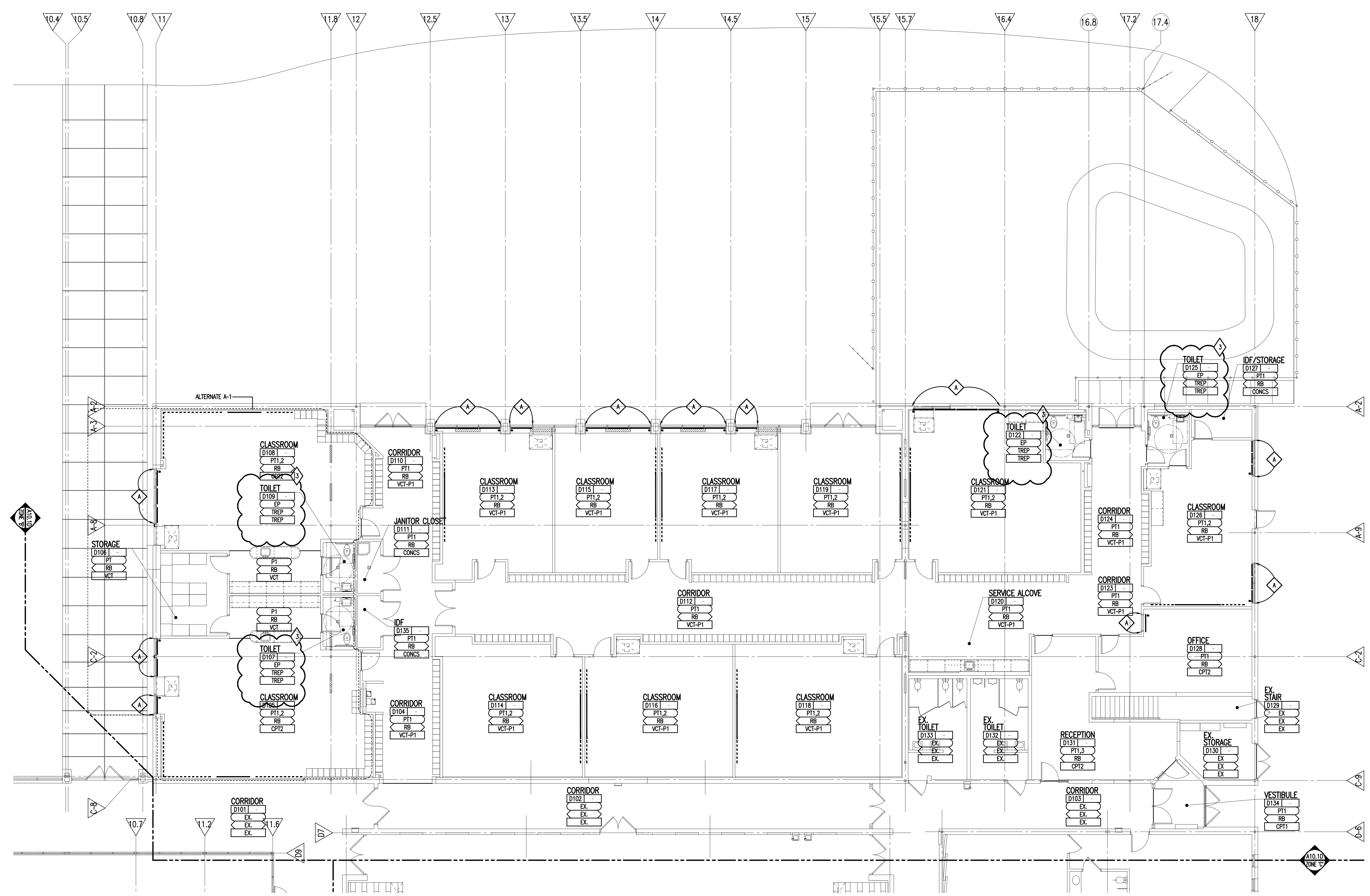
WINDOW TREATMENT CONTROL MECHANISM LOCATION

Ⓢ TYPE 'A' - NON-POCKET STYLE, MANUAL OPERATION, 3X OPEN

PATTERN DETAILS (FLOORS/WALLS)

PATTERN 1 (P1) - FLOOR

PATTERN 1 SHALL BE A 4'-0" X 4'-0" CHECKERBOARD PATTERN USING TWO COLORS: VCT1A AND VCT1B.



FIRST LEVEL FINISH PLAN - ZONE 'D'
SCALE: 1/8" = 1'-0"

Drawing File: D:\Users\jmm\OneDrive\Documents\15104A\15104A-15104A-101.dwg
Date: 10/15/2017 4:15:00pm