



FARMINGTON PUBLIC SCHOOLS 2015 RENOVATIONS

161664B: HIGH SCHOOL RENOVATIONS FARMINGTON HIGH SCHOOL

ISSUED FOR: REBID SET
DATE: NOVEMBER 30 2016
PROJECT NO.: 161664C

ARCHITECT:

 WAKELY ASSOCIATES, INC./ ARCHITECTS
30500 VAN DYKE AVE, SUITE M-7, WARREN, MI 48093, 586.573.4100

STRUCTURAL ENGINEER:

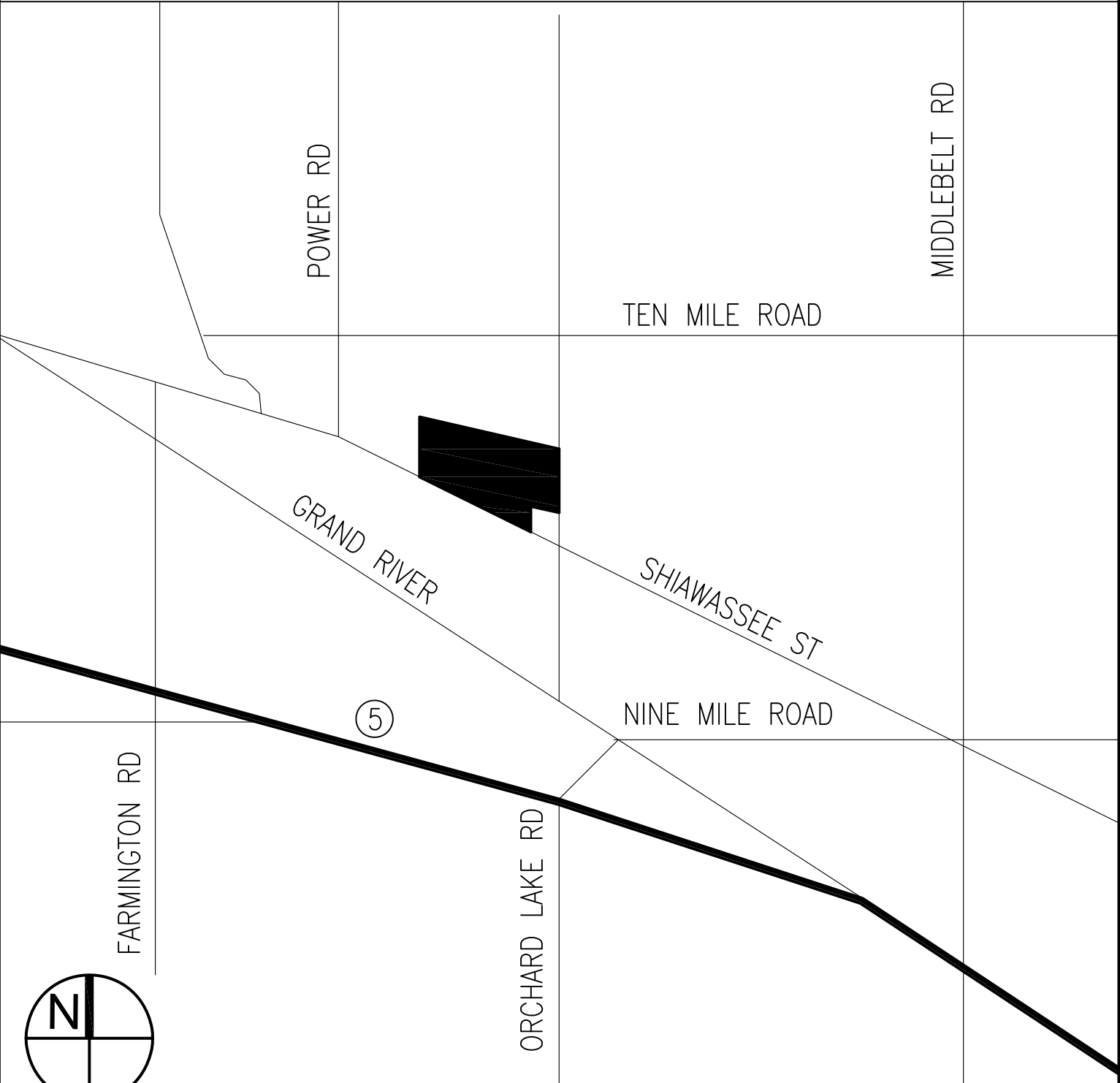
 DESAI/NASR CONSULTING ENGINEERS, INC.
6765 DALY RD., WEST BLOOMFIELD TWP., MI 48322. 248.932.2010

MECHANICAL ENGINEER:

 PETER BASSO ASSOCIATES, INC.
5145 LIVERNOIS, SUITE 100, TROY, MI 48098, 248.879.5666

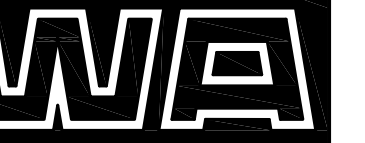
ELECTRICAL ENGINEER:

 PETER BASSO ASSOCIATES, INC.
5145 LIVERNOIS, SUITE 100, TROY, MI 48098, 248.879.5666

161664C - Farmington Public Schools FARMINGTON HIGH SCHOOL	
Index of Drawings	
ARCHITECTURAL DRAWINGS: A1.0FH COMPOSITE FLOOR PLAN A1.13FH FLOOR PLAN AREA 'N' A5.11FH ENLARGED PLANS AND DETAILS	
Building Addresses	
1 FARMINGTON HIGH SCHOOL 32000 SHAWASSEE ST. FARMINGTON, 48336	
Location Map <small>NOT TO SCALE</small>	
	

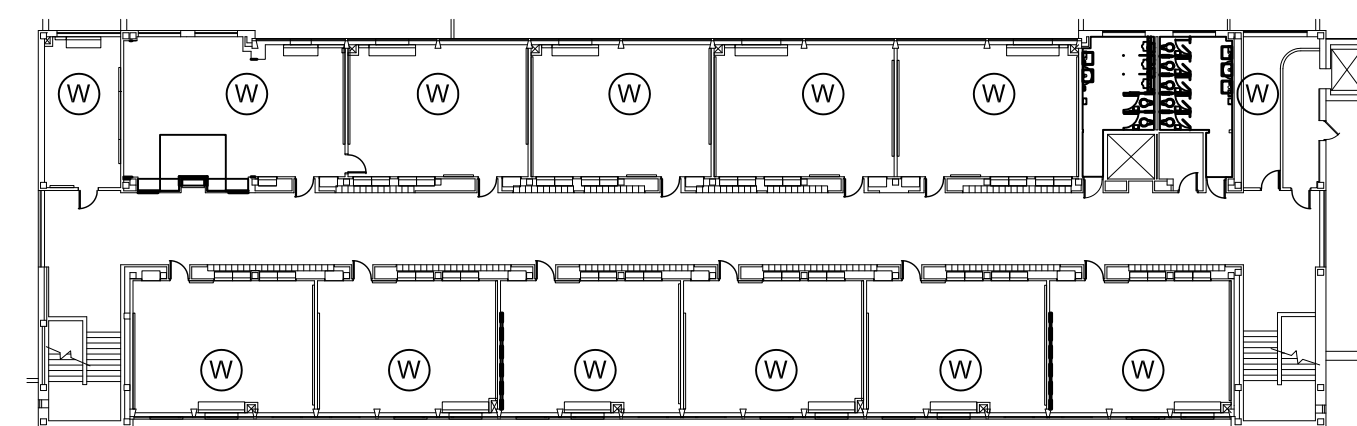
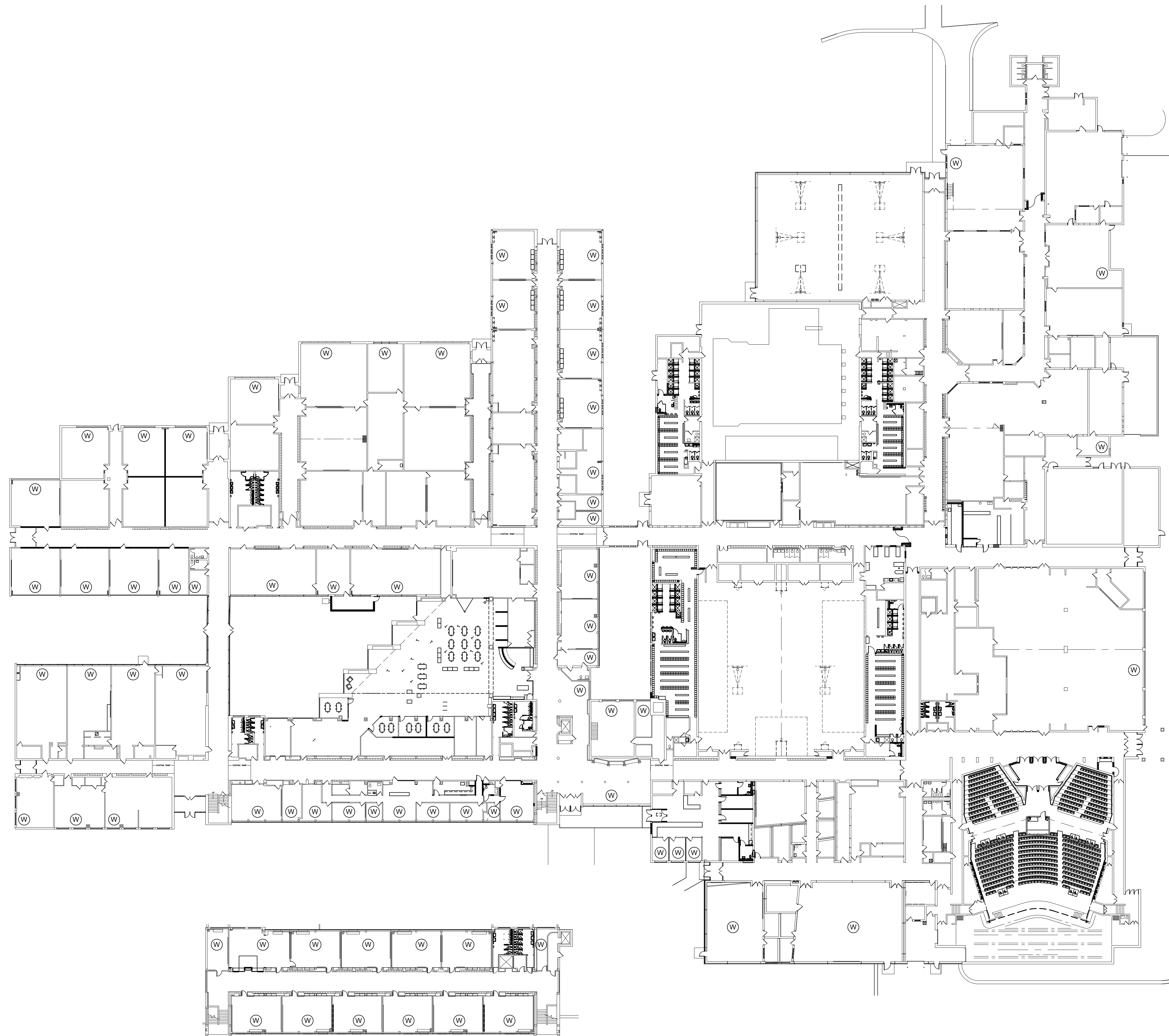
Farmington Public Schools - 2015 Renovations
151626C High School Renovations
Issued for: BIDS, Date - 11-30-16

(W) REMOVE ALL EXISTING WINDOW TREATMENTS IN ROOM COMPLETE. INSTALL NEW WINDOW TREATMENTS ON ALL WINDOWS IN ROOM PER SPEC SECTION 12492.



WAKELY ASSOCIATES, INC.
ARCHITECTS

30500 VAN DYKE AVENUE
SUITE M-7
WARREN, MICHIGAN 48093
PH: 586.573.4100
FX: 586.573.8822
www.WakelyMA.com



2 COMPOSITE SECOND FLOOR PLAN
A1.1 SCALE: 1/32" = 1'-0"

1 COMPOSITE FIRST FLOOR PLAN
A1.1 SCALE: 1/32" = 1'-0"

FARMINGTON PUBLIC SCHOOLS
2015 RENOVATIONS
FARMINGTON HIGH SCHOOL

FARMINGTON HIGH SCHOOL
FIRST & SECOND FLOOR
COMPOSITE FLOOR PLAN

PRELIMINARY
DESIGN DEVELOPMENT
CONSTRUCTION
FINAL RECORD

DRAWN BY JMS, NJL

CHECKED BY BJS

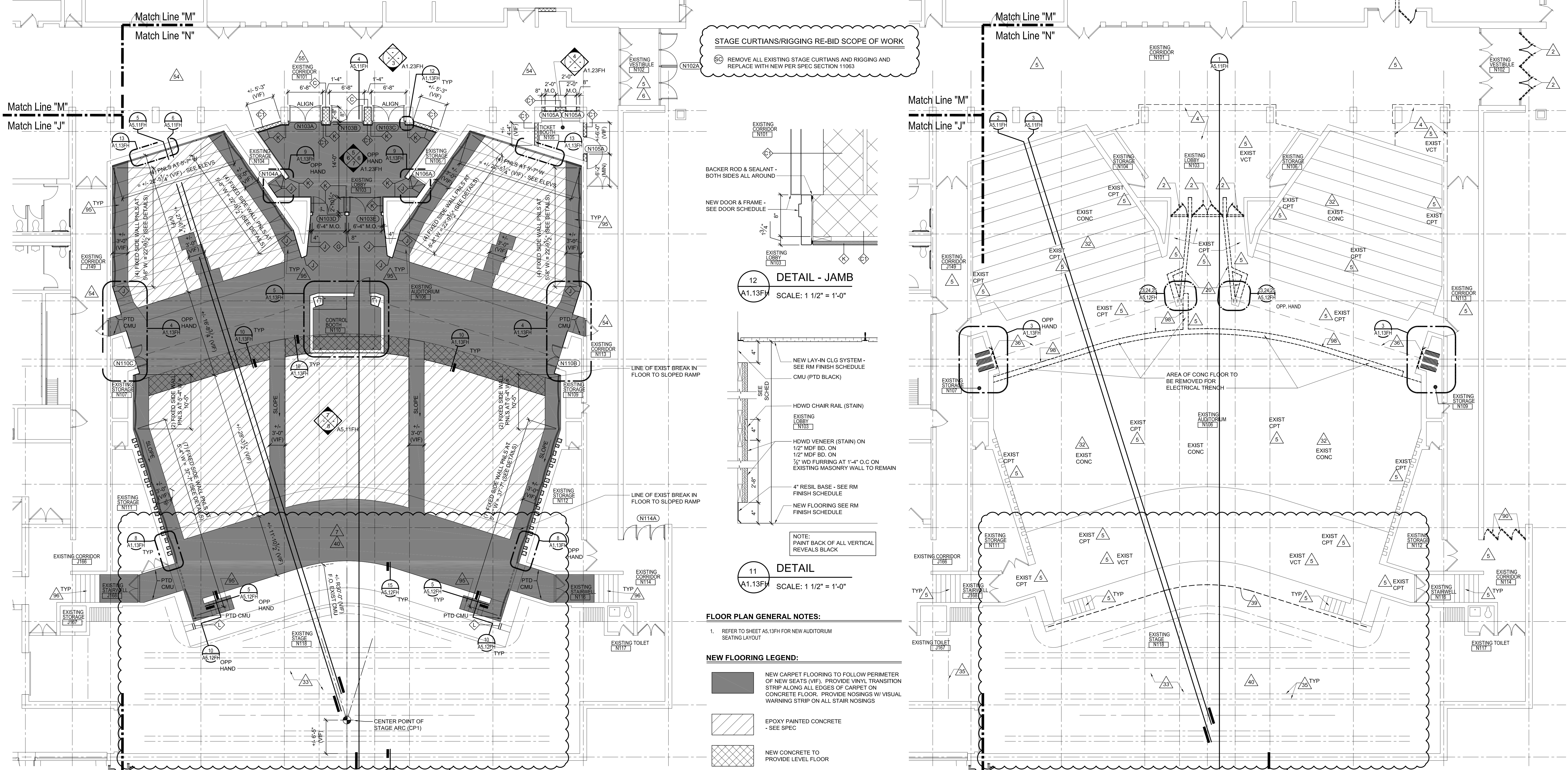
REVISIONS

RE-BID 11-30-16

DATE: FEBRUARY 1, 2016
SHEET NO.

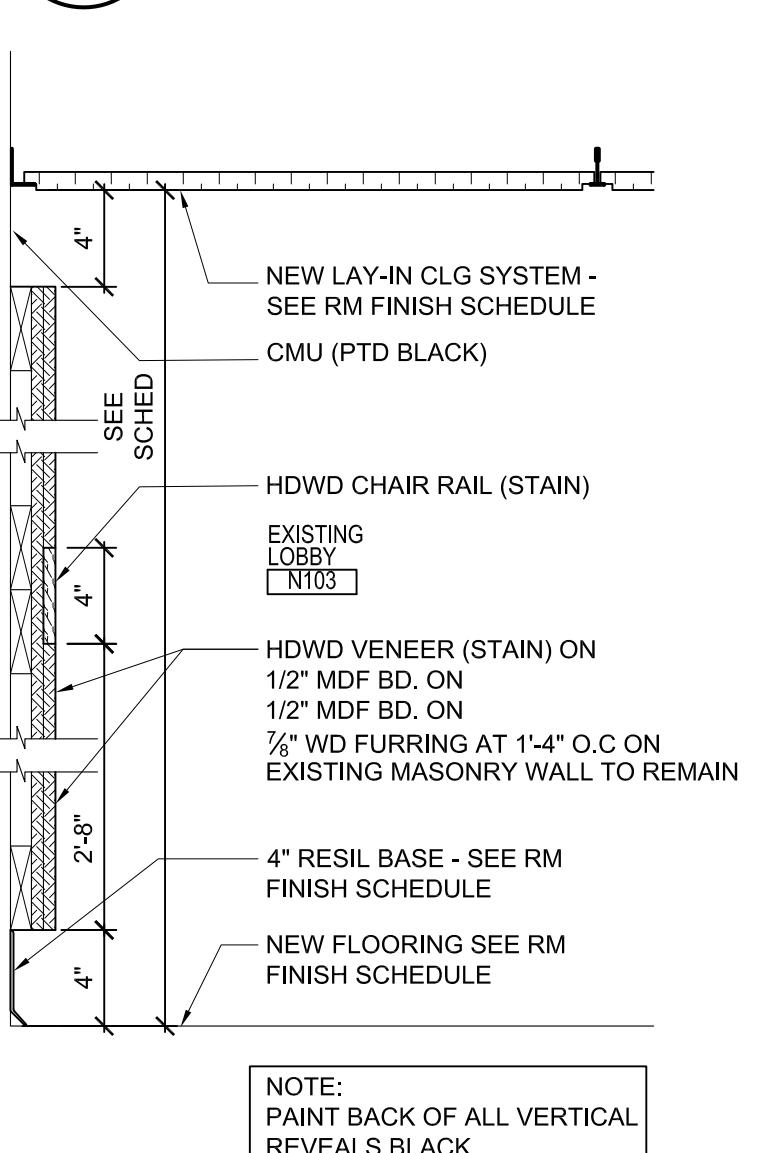
A1.0FH

JOB NO. 151626C

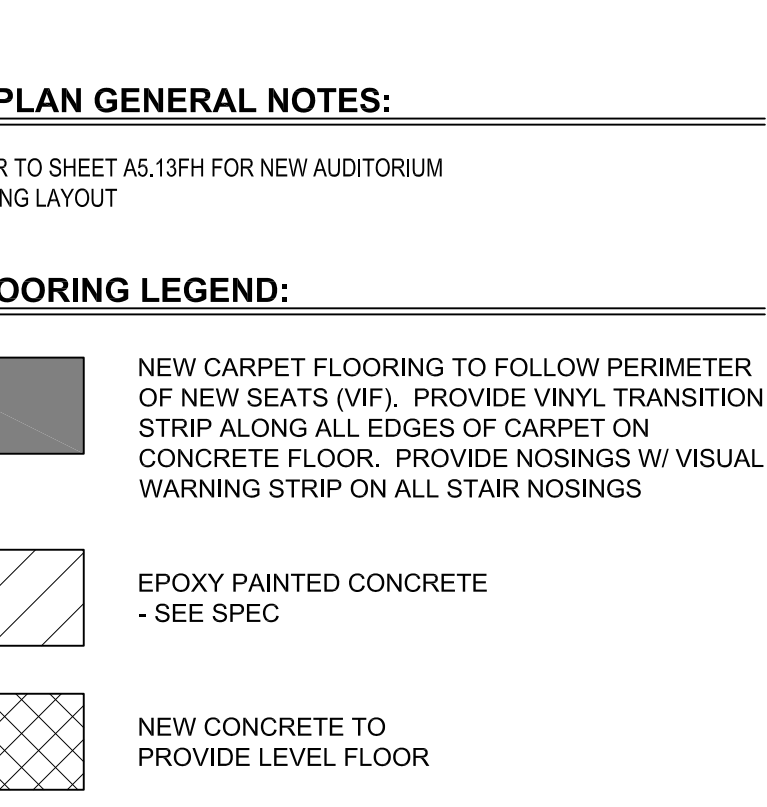


STAGE CURTAINS/RIGGING RE-BID SCOPE OF WORK
REMOVE ALL EXISTING STAGE CURTAINS AND RIGGING AND REPLACE WITH NEW PER SPEC SECTION 11063

12 DETAIL - JAMB
SCALE: 1 1/2" = 1'-0"



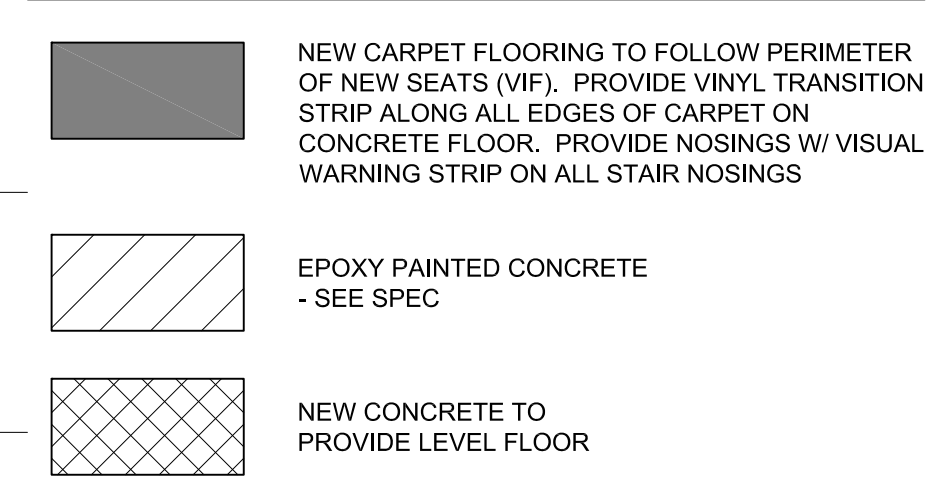
11 DETAIL
SCALE: 1 1/2" = 1'-0"



FLOOR PLAN GENERAL NOTES:

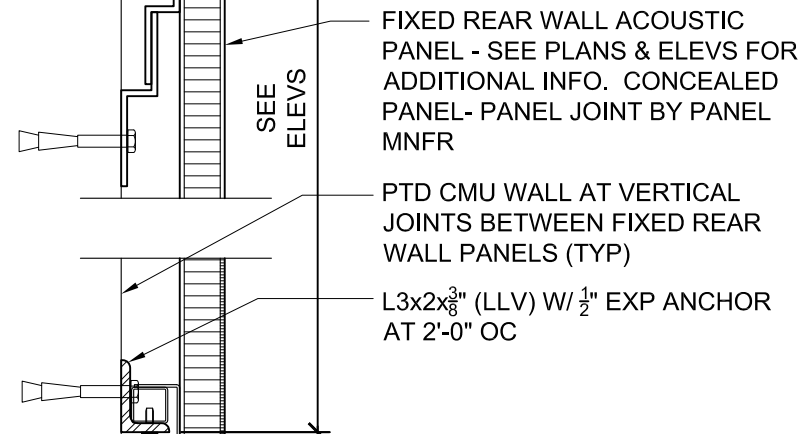
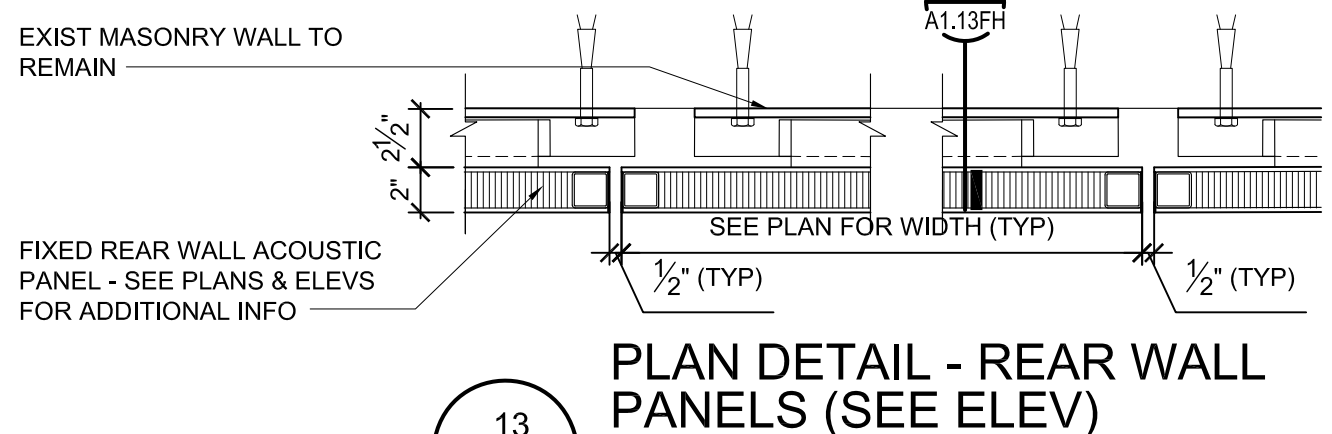
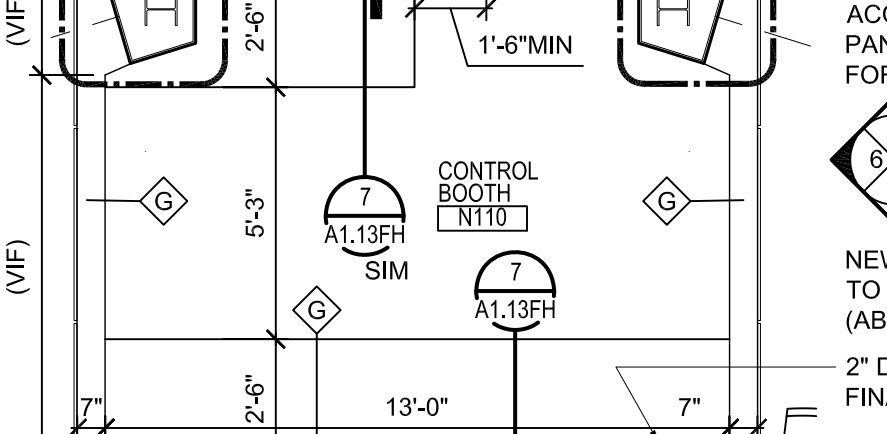
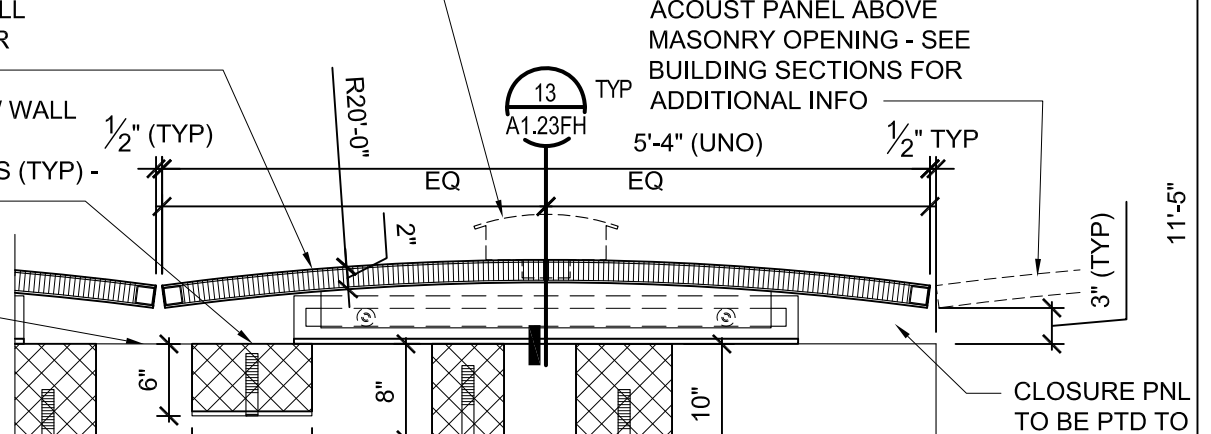
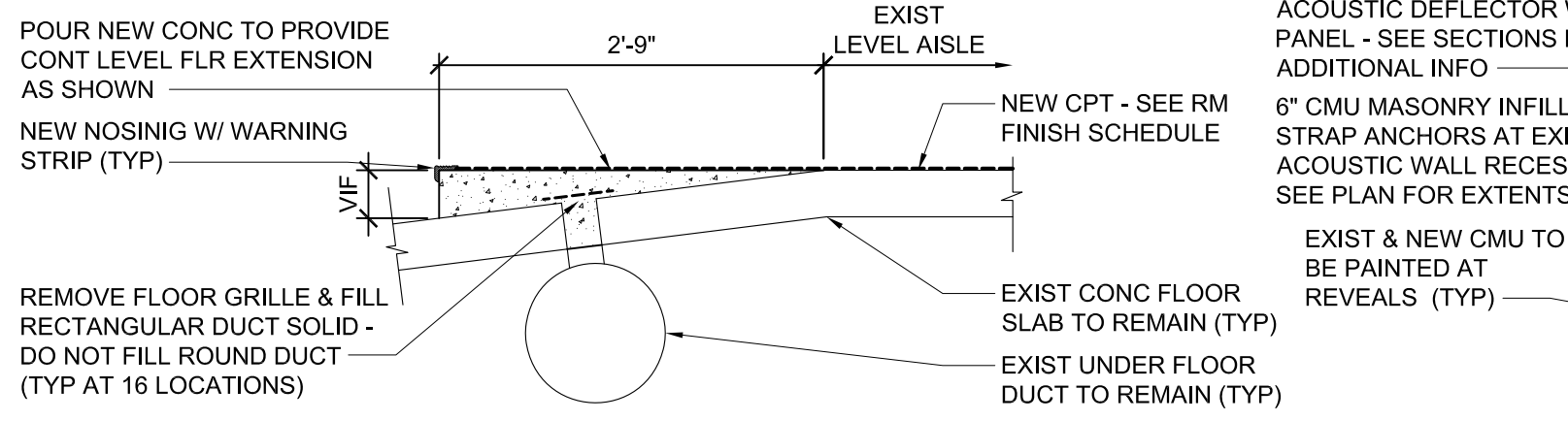
- 1. REFER TO SHEET AS.13FH FOR NEW AUDITORIUM SEATING LAYOUT

NEW FLOORING LEGEND:



2 PARTIAL FLOOR PLAN FIRST FLOOR - AREA 'N'
SCALE: 1/8" = 1'-0"

1 PARTIAL DEMOLITION PLAN FIRST FLOOR - AREA 'N'
SCALE: 1/8" = 1'-0"



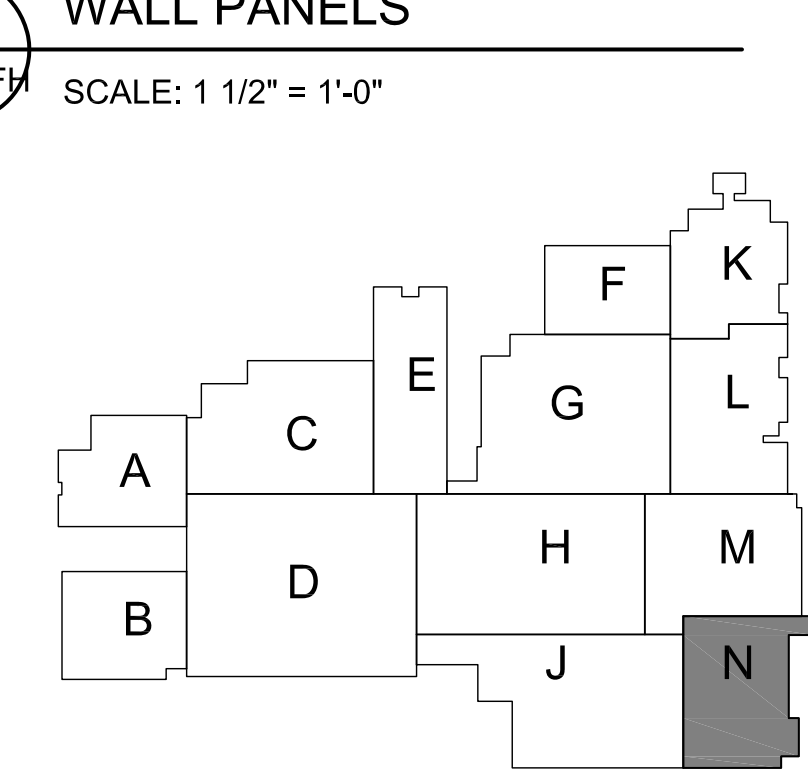
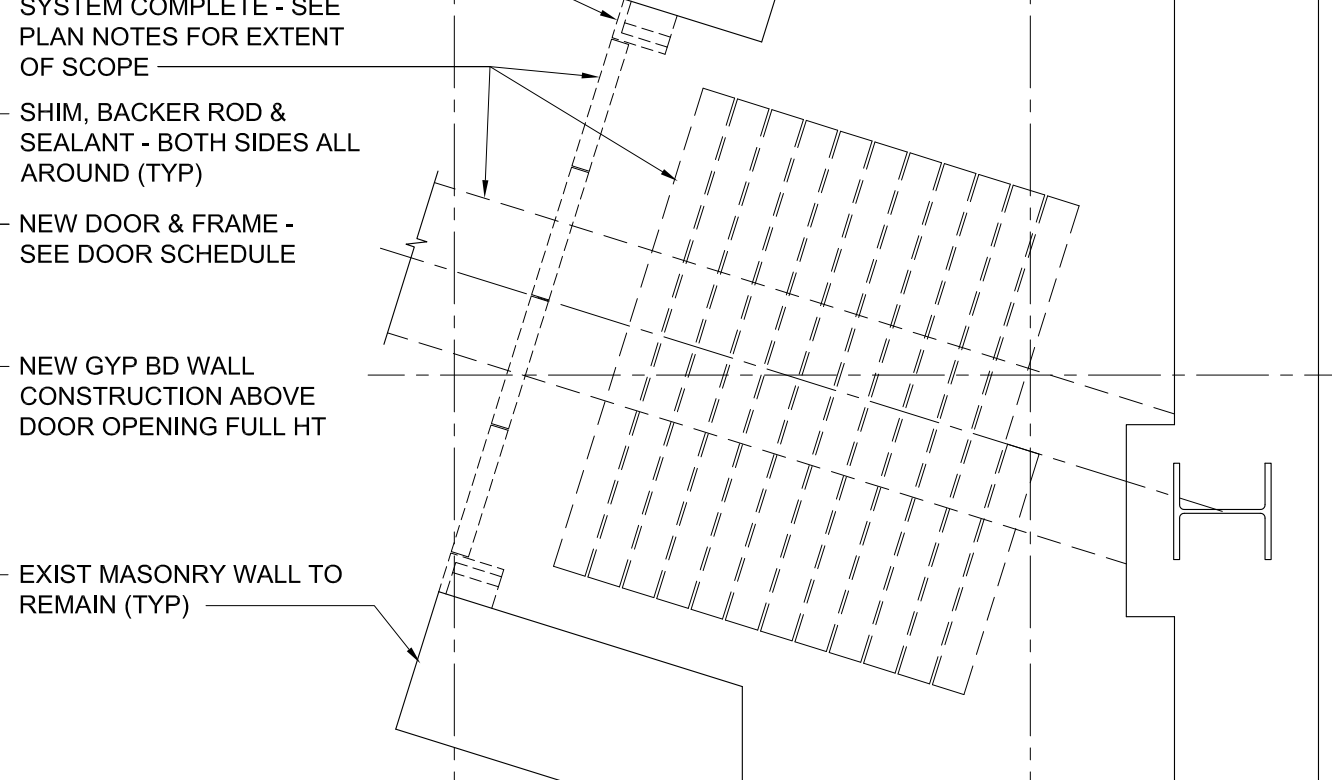
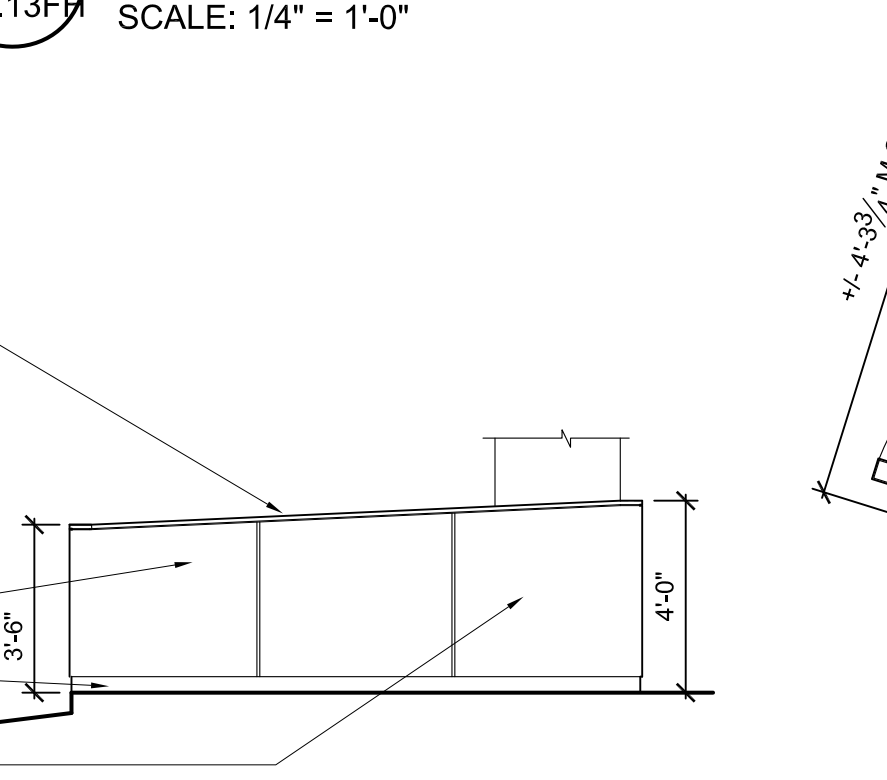
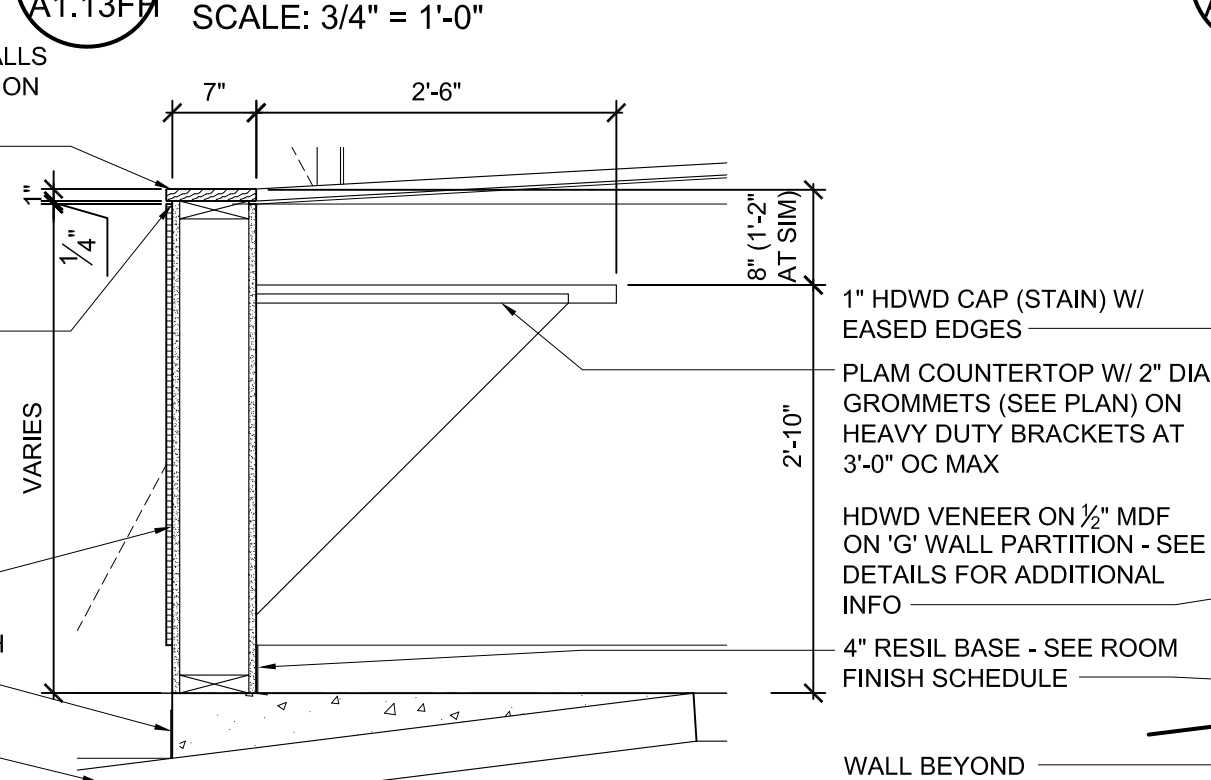
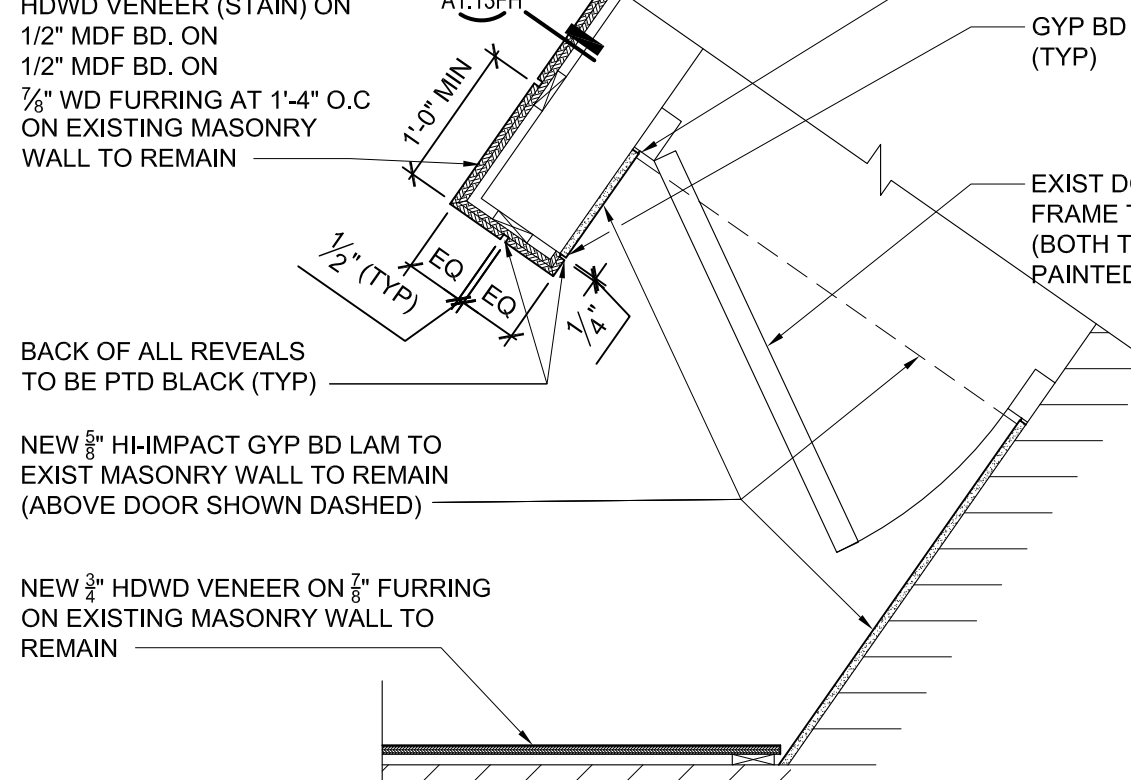
10 SECTION - FLOOR
SCALE: 3/4" = 1'-0"

8 PLAN DETAIL - FIXED SIDE WALL PANEL
SCALE: 3/4" = 1'-0"

5 ENLARGED PLAN - NEW WORK
SCALE: 1/4" = 1'-0"

13 PLAN DETAIL - REAR WALL PANELS (SEE ELEV)
SCALE: 1 1/2" = 1'-0"

14 SECTION - FIXED REAR WALL PANELS
SCALE: 1 1/2" = 1'-0"



9 PLAN DETAIL - LOBBY
SCALE: 3/4" = 1'-0"

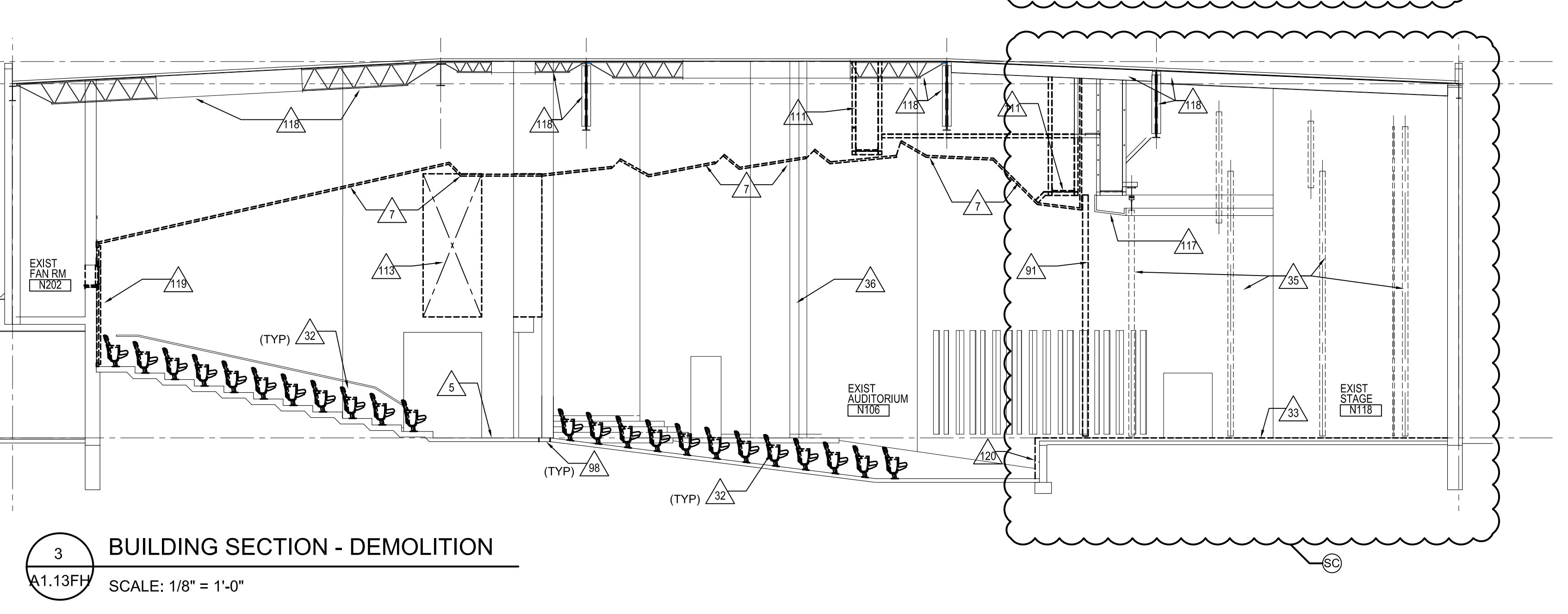
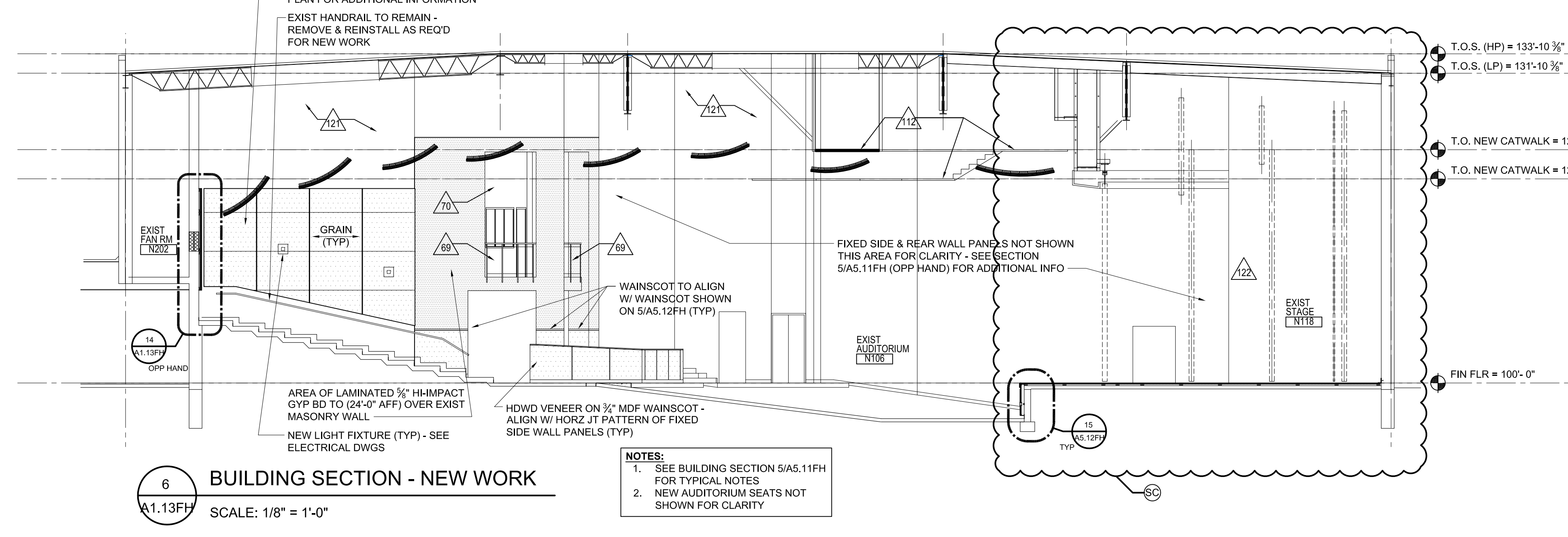
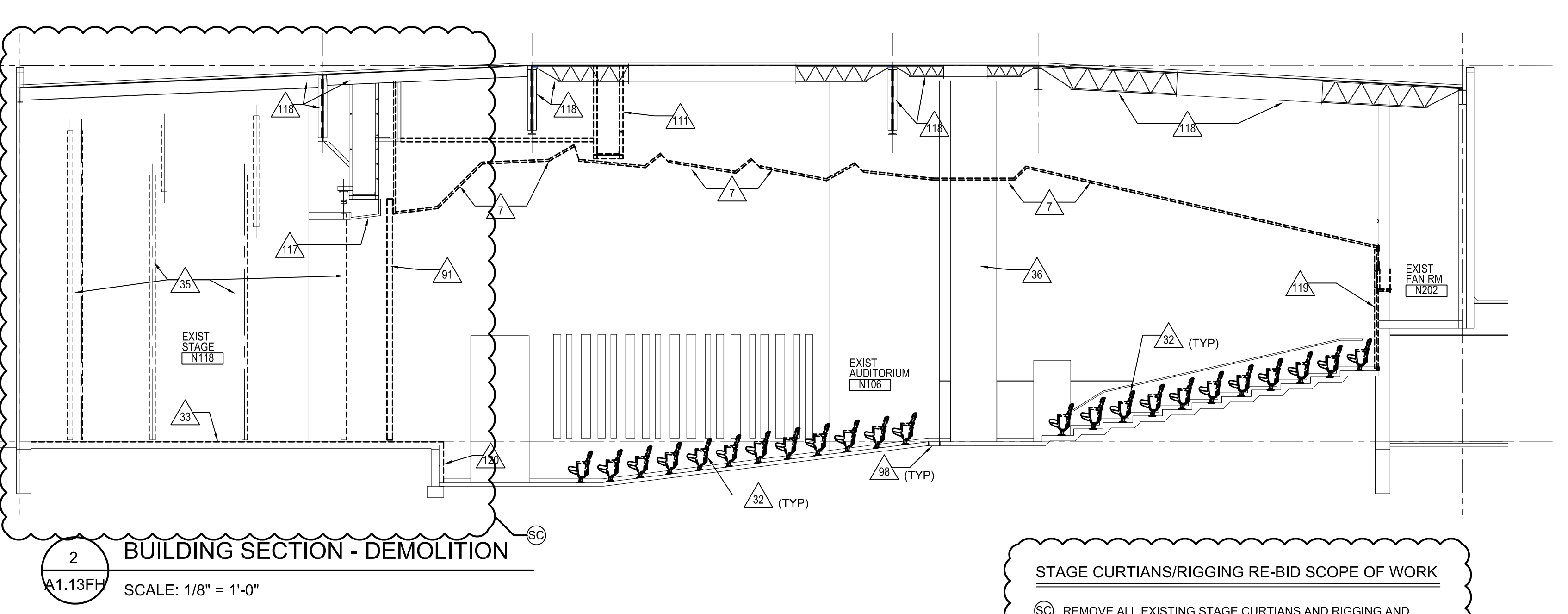
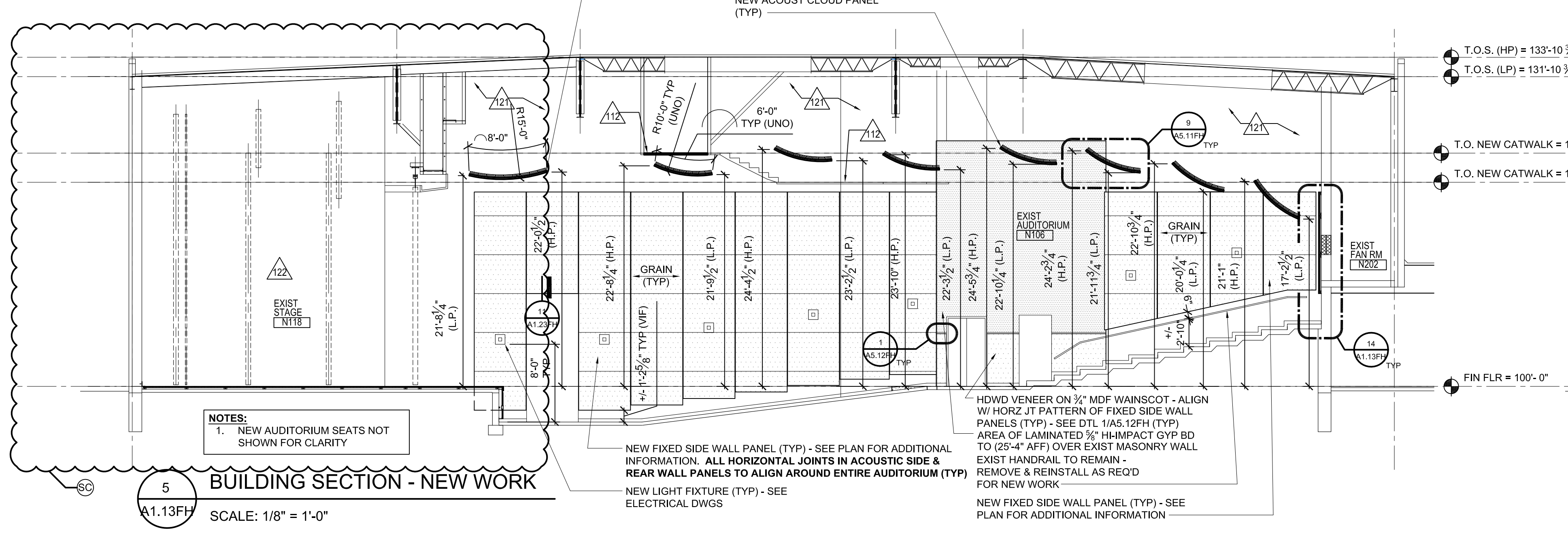
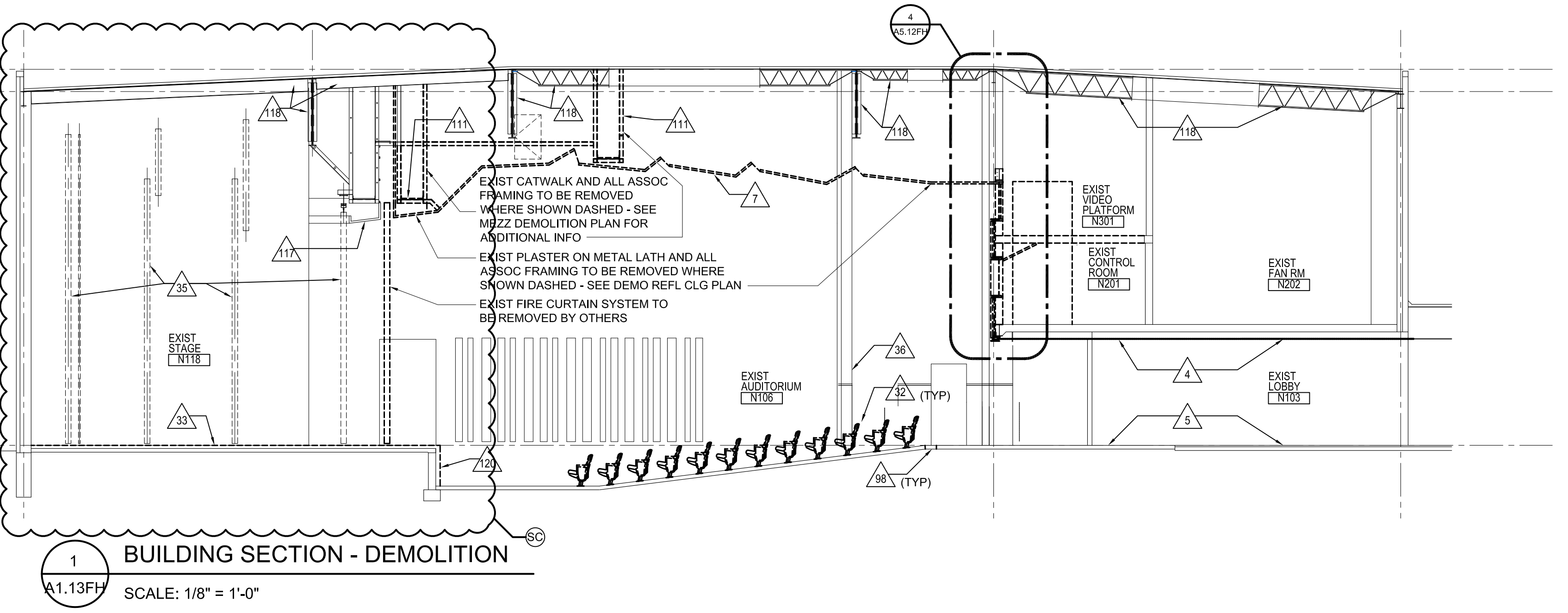
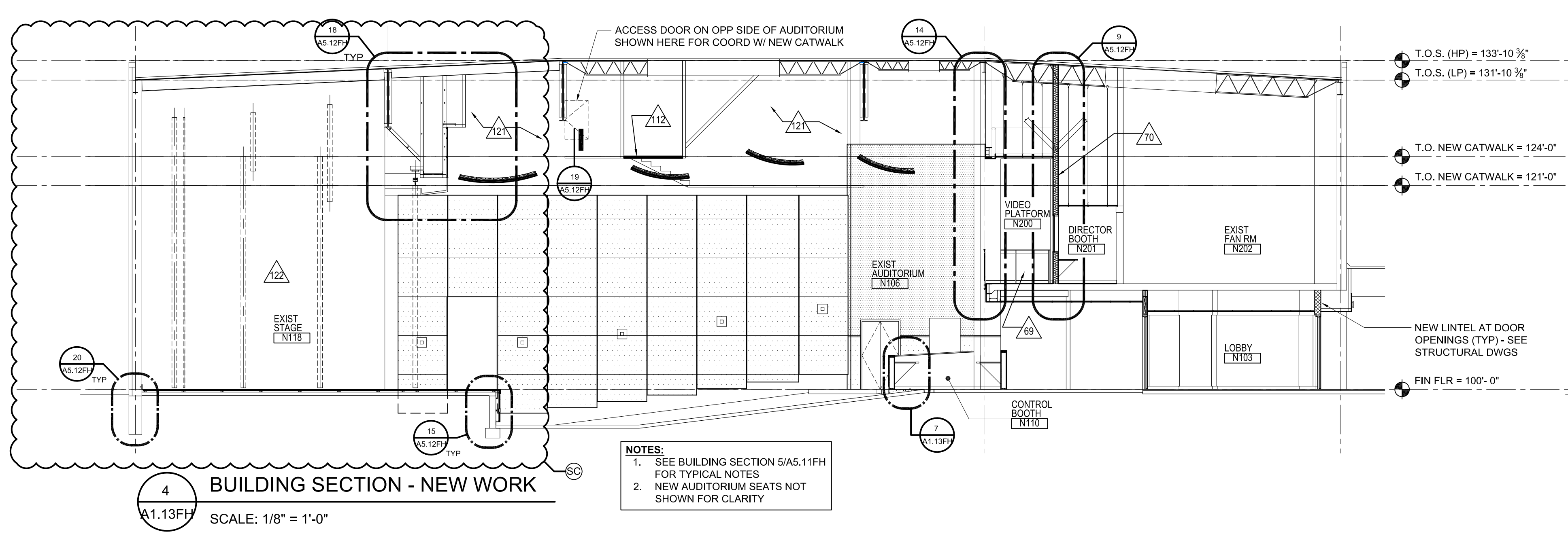
7 NEW WORK WALL SECTION
SCALE: 3/4" = 1'-0"

6 INTERIOR ELEVATION
SCALE: 1/4" = 1'-0"

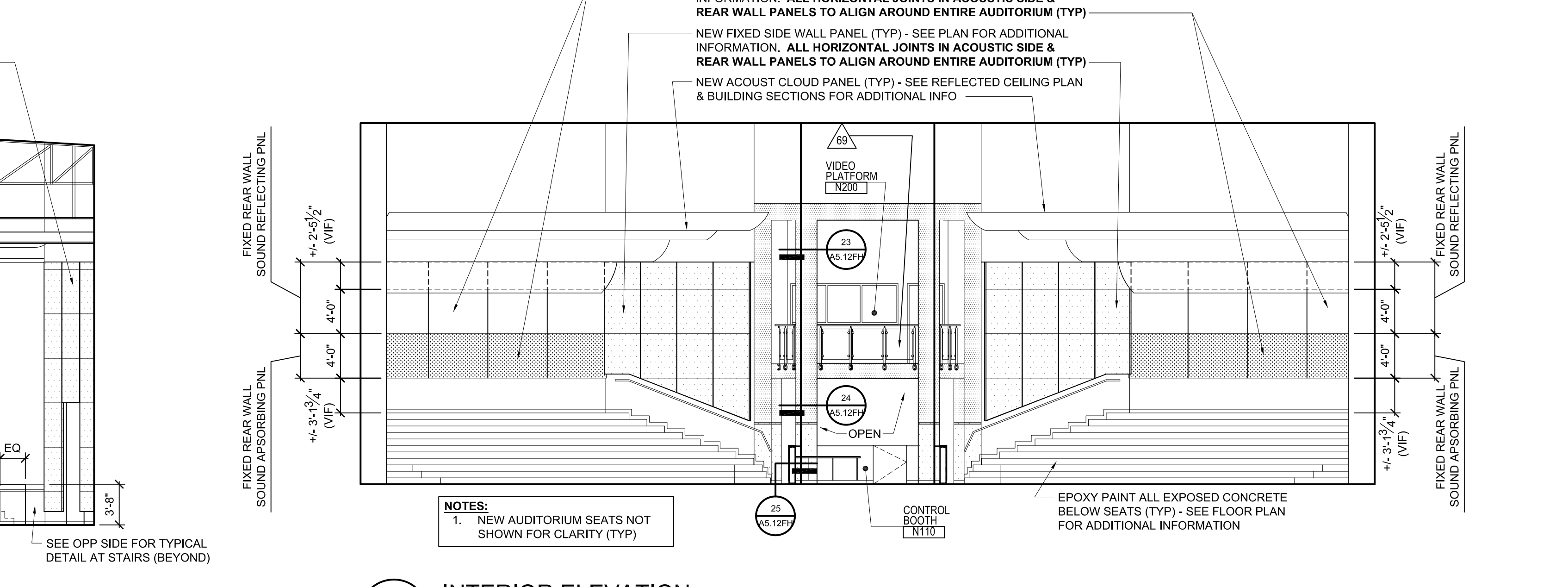
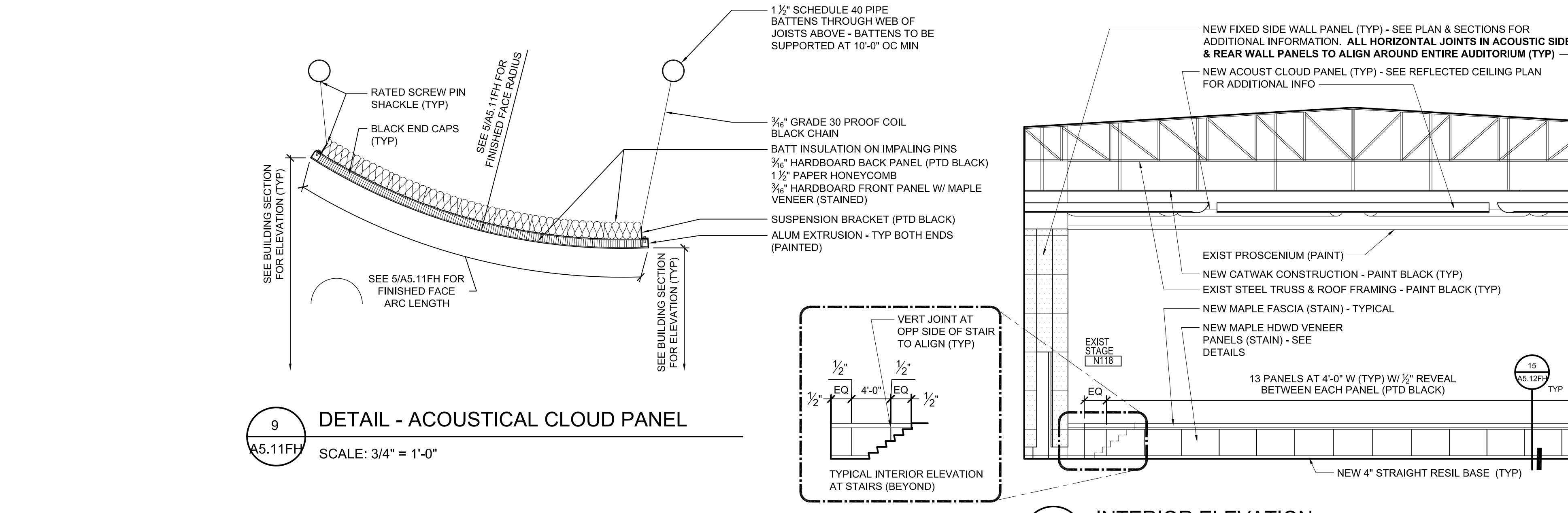
4 PLAN DETAIL - NEW WORK
SCALE: 3/4" = 1'-0"

3 SECTION - FIXED REAR WALL PANELS
SCALE: 1 1/2" = 1'-0"





STAGE CURTAINS/RIGGING RE-BID SCOPE OF WORK
SC REMOVE ALL EXISTING STAGE CURTAINS AND RIGGING AND REPLACE WITH NEW PER SPEC SECTION 11063



FARMINGTON PUBLIC SCHOOLS
2015 RENOVATIONS
FARMINGTON HIGH SCHOOL

FARMINGTON HIGH SCHOOL

ENLARGED PLANS
INTERIOR ELEVATIONS
DETAILS

- PRELIMINARY
- DESIGN DEVELOPMENT
- CONSTRUCTION
- FINAL RECORD

DRAWN BY JMS, NUL
CHECKED BY BJS

REVISIONS

RE-BID 11/30/15

DATE: FEBRUARY 1, 2016
SHEET NO.

A5.11FH

JOB NO. 151626C