

## ADDENDUM

Project Name:	Village of Beverly Hills Village Hall Office Renovation	Addendum No:	One (2)
Project Number:	15-161	Issue Date:	April 18, 2015
Project Location:	The Village of Beverly Hills, Michigan		

To the Contract Documents for the requested Village of Beverly Hills Village Hall Office Renovation.

This Addendum forms a part of the above described Contract Documents and supersedes, supplements or clarifies parts thereof to the extent defined by the terms set forth in this Addendum.

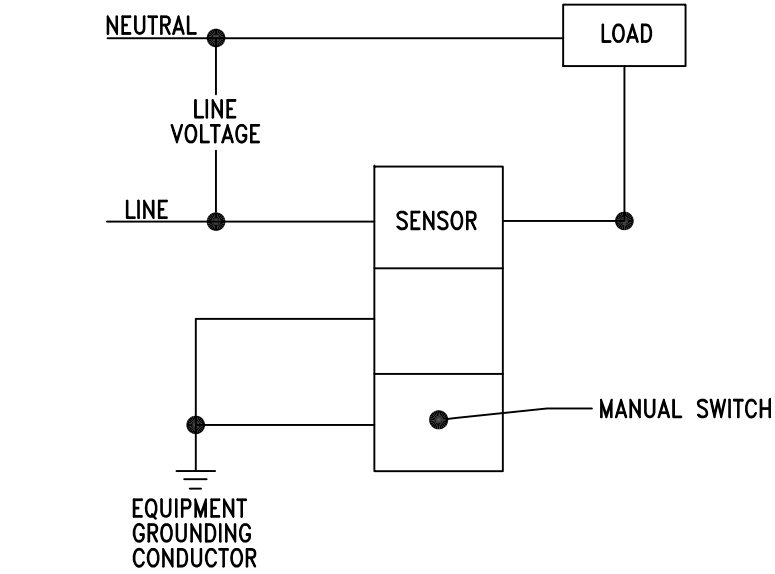
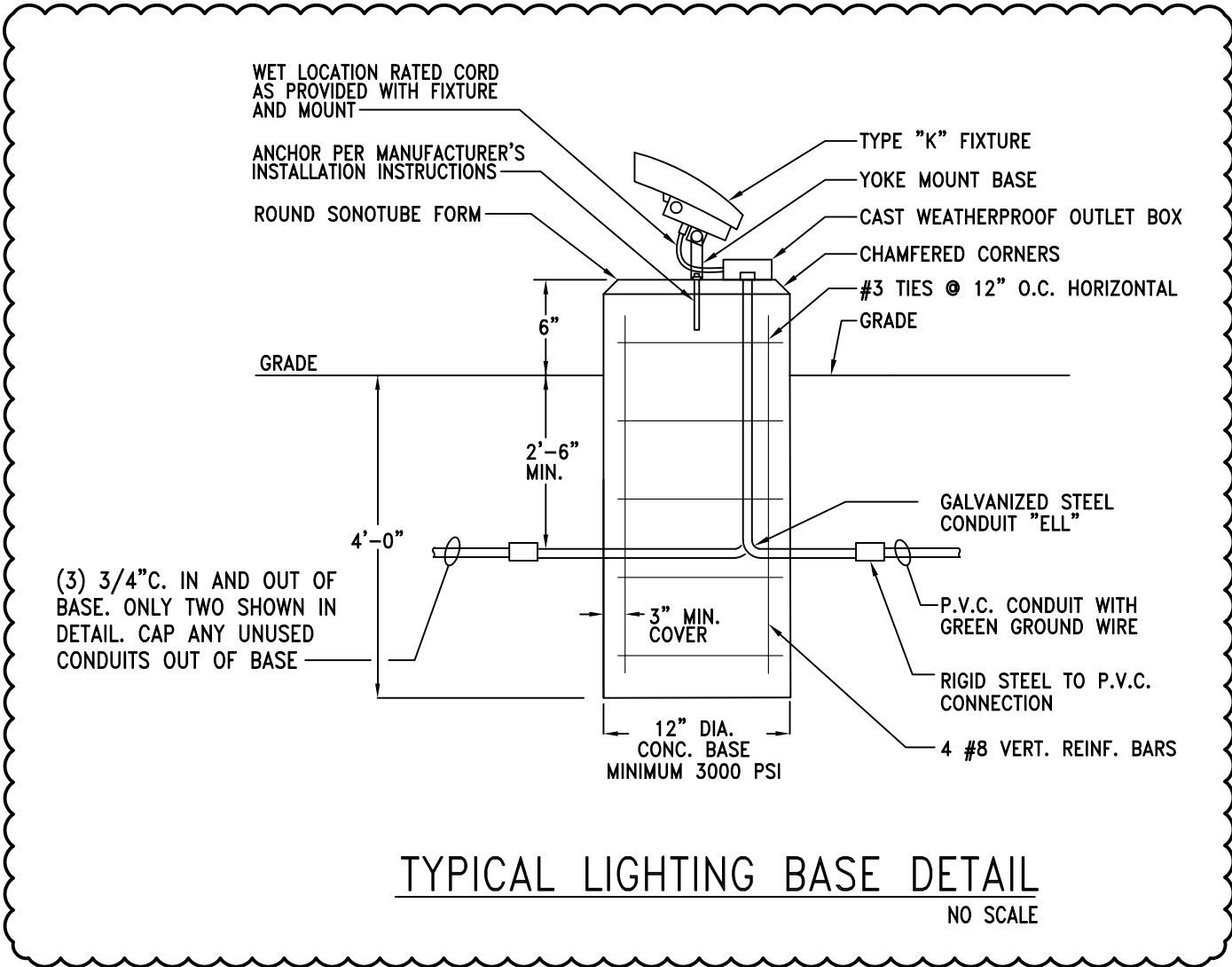
This addendum consists of (1) typed page and the following attachments:

Drawings:	Electrical:	E0.3 (1 drawing)
		ED2-01 (1 drawing)
		E1-01 (1 drawing)
		E2-01 (1 drawing)

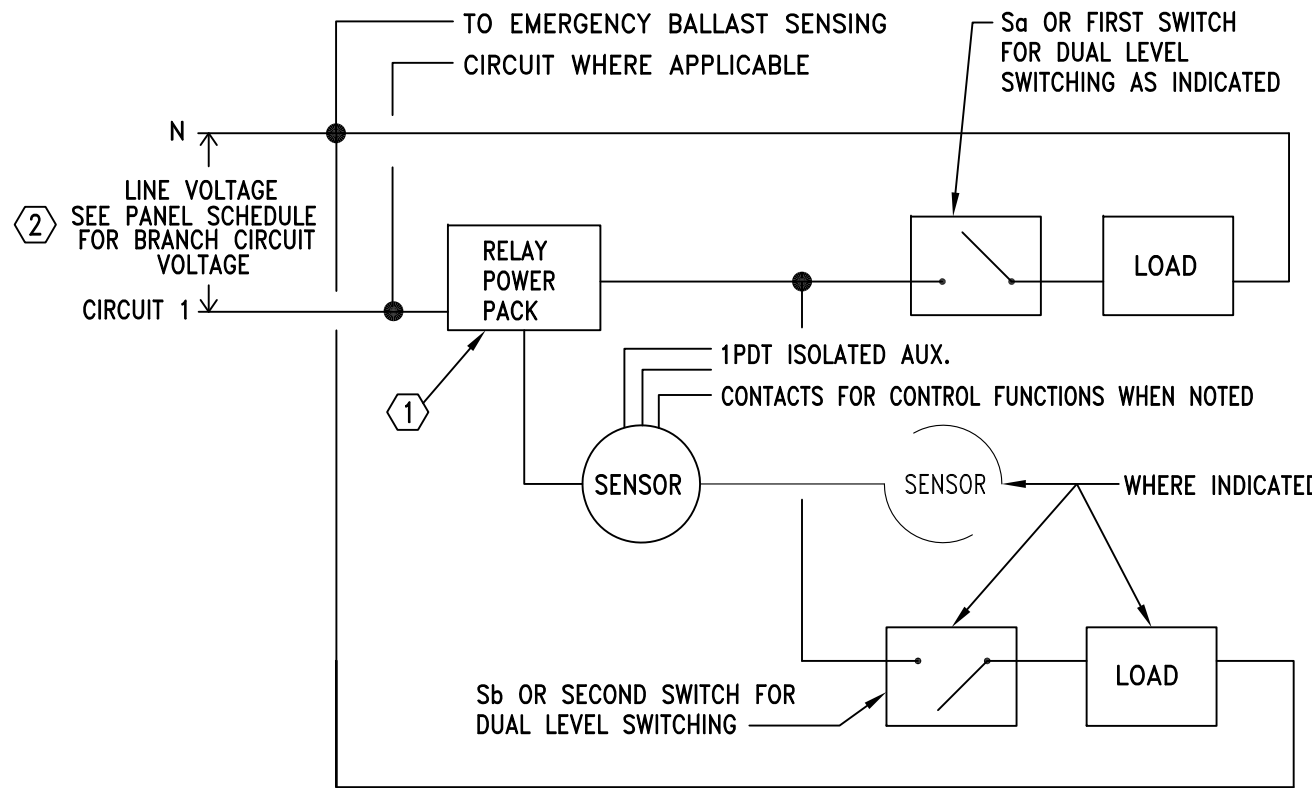
### Electrical Drawings:

- |                |   |
|----------------|---|
| <b>Item E1</b> | Drawing E0.3; Electrical Details (revised and re-issued this Addendum): <ul style="list-style-type: none"> <li>A. Add “Typical Lighting Base Detail”</li> </ul>   |
| <b>Item E2</b> | Drawing ED2-01; Power & Communications Demolition Plan (revised and re-issued this Addendum): <ul style="list-style-type: none"> <li>A. Power &amp; Communications Demolition Plan:           <ul style="list-style-type: none"> <li>1. Add demolition note to existing Illuminated Sign.</li> </ul> </li> </ul>  |
| <b>Item E3</b> | Drawing E1-01; Lighting New Work Plan (revised and re-issued this Addendum): <ul style="list-style-type: none"> <li>A. Lighting Fixture Schedule:           <ul style="list-style-type: none"> <li>1. Add “Type-“K” fixture to Lighting Fixture Schedule.</li> </ul> </li> <li>B. Lighting New Work Plan:           <ul style="list-style-type: none"> <li>1. Revised two (2) Type “A” fixtures to two (2) Type – “AE” as indicated.</li> </ul> </li> </ul> |
| <b>Item E4</b> | Drawing E2-01; Power & Communications New Work Plan (revised and re-issued this Addendum): <ul style="list-style-type: none"> <li>A. Power &amp; Communications New Work Plan:           <ul style="list-style-type: none"> <li>1. Add new work to new Illuminated Sign.</li> </ul> </li> </ul>   |

**\*\*END OF ADDENDUM\*\***



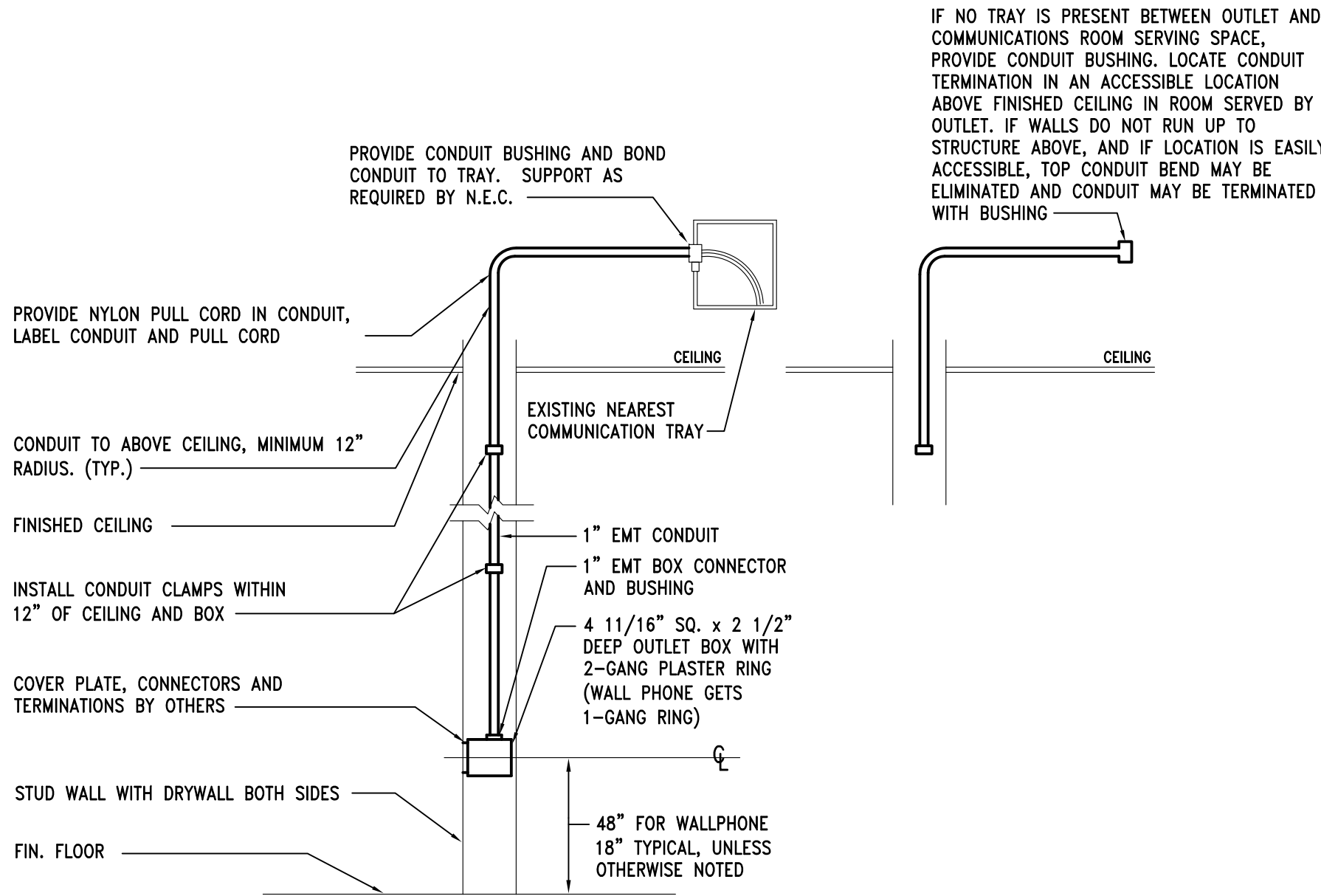
SCHEMATIC OCCUPANCY CONTROL DETAIL  
WALL MOUNTED SENSOR  
NO SCALE



SCHEMATIC OCCUPANCY CONTROL DETAIL  
(CEILING MOUNTED SENSOR)

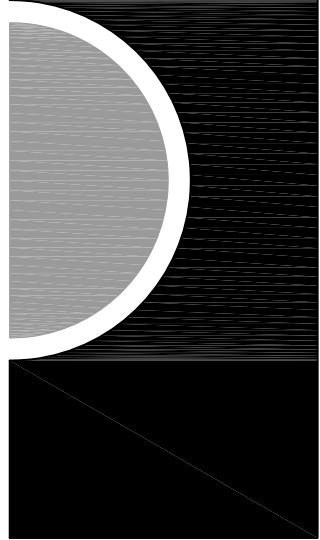
KEY NOTES:

- 1 PROVIDE MULTIPLE SUPPLEMENTAL POWER PACK/RELAY CONTROLLED BY SENSOR(S) IN SPACE AS REQUIRED TO CONTROL 120V FIXTURES (SUCH AS TASK LIGHTS OR DOWNLIGHTS IN CONFERENCE ROOMS) IF THE ROOM CONTAINS 277V FLUORESCENT AND 120V FIXTURES. TYPICAL FOR SWITCHED EMERGENCY AND NORMAL CIRCUITS CONTROLLED BY THE SAME SENSOR(S). COORDINATE VOLTAGE OF SECOND RELAY / POWER PACK AS REQUIRED FOR EACH CONTROLLED CIRCUIT.
- 2 WHERE NORMAL AND SWITCHED EMERGENCY FIXTURES ARE PRESENT, WIRE THE SENSOR AND MASTER POWER PACK TO THE EMERGENCY SWITCH LEG AND WIRE THE NORMAL SWITCH LEGS TO THE AUXILIARY POWER PACKS. THIS IS TO ENSURE THAT THE SENSOR AND SWITCHED EMERGENCY FIXTURES STILL OPERATE UNDER EMERGENCY POWER.



TYPICAL COMMUNICATIONS OUTLET DETAIL  
NO SCALE

PARTNERS



PARTNERS in Architecture, PLC

65 MARKET STREET  
MOUNT CLEMENS, MI 48043  
P 586.469.3600  
F 586.469.3607

Statement of Intellectual Property

The ideas, concepts, drawings and thoughts conveyed herein are the intellectual property of PARTNERS in Architecture, PLC, 65 Market Street, Mount Clemens, MI 48043 (P 586.469.3600). This set of drawings, in whole or in part, may not be reproduced, without the written consent of PARTNERS in Architecture, PLC. This information is protected under U.S. Copyright Law, all rights reserved.

© Copyright 2016

CONSULTANT



KEY PLAN

OWNER

Village of Beverly Hills  
18500 W 13 Mile Road  
Beverly Hills, MI 48025

PROJECT NAME

Village of Beverly Hills  
Office Renovation

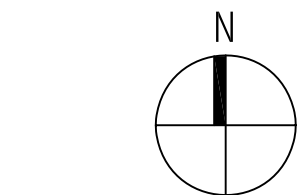
18500 W 13 Mile Road  
Beverly Hills, MI 48025

PROJECT NO.

15-161

ISSUES / REVISIONS

Bidding - Construction 04/01/2016  
Addendum - 02 04/18/2016



DRAWN BY

QOT

CHECKED BY

SW

APPROVED BY

SW

SHEET NAME

ELECTRICAL  
DETAILS

SHEET NO.

E0.3

NOT FOR CONSTRUCTION

65 MARKET STREET  
MOUNT CLEMENS, MI 48043  
P 586.469.3600  
F 586.469.3607

The ideas, concepts, drawings and thoughts conveyed herein are the intellectual property of PARTNERS in Architecture, P.L.C. 65 Market Street, Mount Clemens, MI 48043 (P 586.469.3600). This set of drawings, in whole or in part, may not be reproduced, without the written consent of PARTNERS in Architecture, P.L.C. This information is protected under U.S. Copyright Law, all rights reserved.

CONSULTANT



OWNER

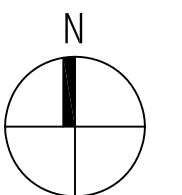
PROJECT NAME

18500 W 13 Mile Road  
Beverly Hills, MI 48025

PROJECT NO.

ISSUES / REVISIONS

Bidding - Construction	04/01/2016
Addendum - 02	04/18/2016



DRAWN BY  
CB

CHECKED BY  
SW

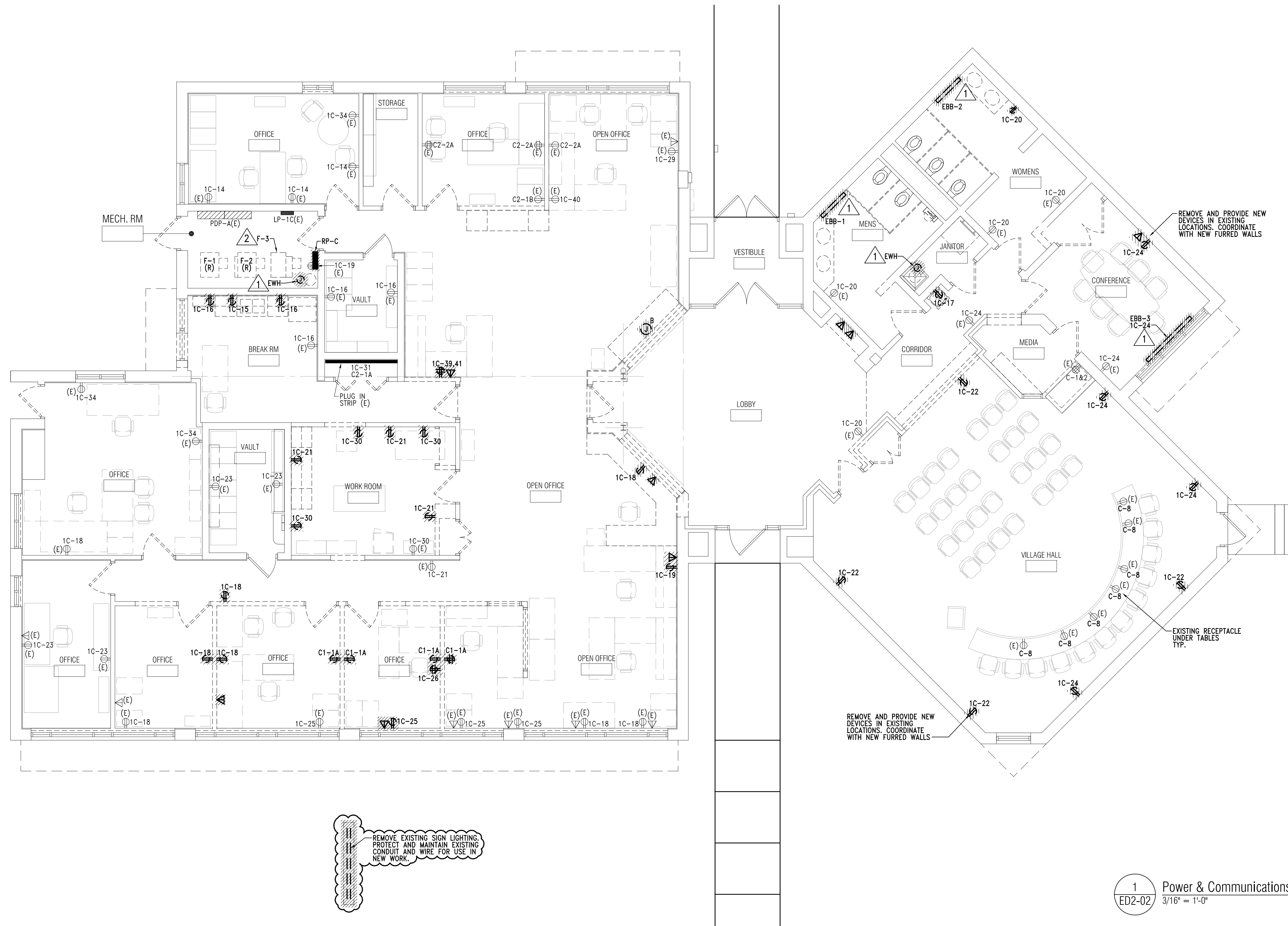
APPROVED BY  
SW

SHEET NAME

# POWER & COMMUNICATIONS DEMOLITION PLAN

SHEET NO.  
ED2-01

- 1 DISCONNECT EQUIPMENT FOR REMOVAL BY OTHER TRADES.  
PROTECT AND MAINTAIN CONDUIT AND WIRE FOR REUSE.  
REFER TO NEW WORK PLAN FOR ADDITIONAL INFORMATION.
- 2 DISCONNECT AND REMOVE ALL CONDUIT AND WIRING  
SERVING EQUIPMENT BACK TO SOURCE.



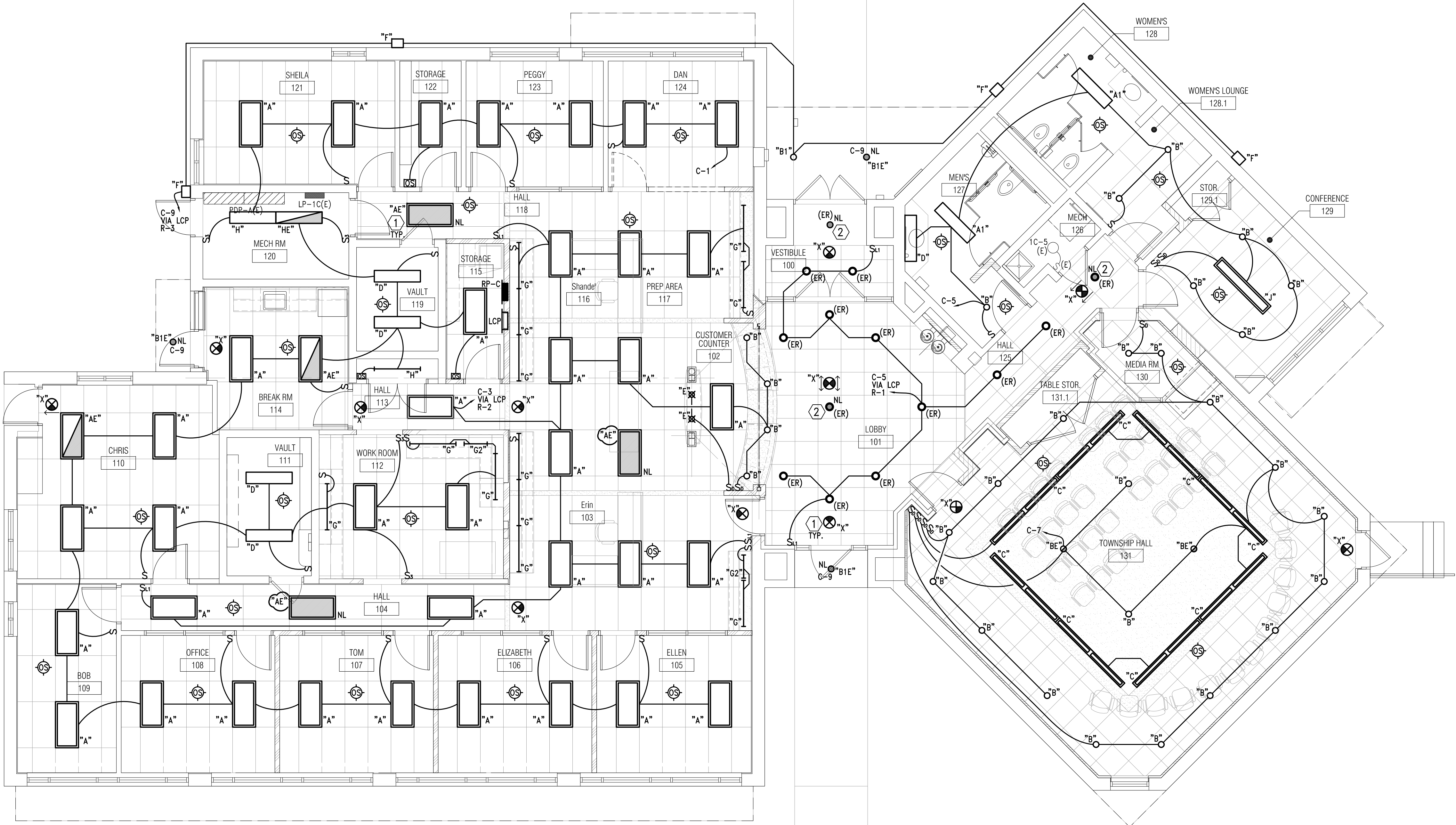
NOT FOR CONSTRUCTION

LIGHTING FIXTURE SCHEDULE:

- "A" LED RECESSED 2'x4' VOLUMETRIC TYPE FIXTURE, ROUND ACRYLIC DIFFUSER, DIE FORMED HOUSING, POST PAINTED WHITE POLYESTER POWDER FINISH, WITH 34W, 4000 LUMEN, 3500K LEDS, METALUX CRUZE SERIES OR APPROVED EQUAL.
- "AE" SAME AS TYPE "A" EXCEPT WITH BUILT-IN EMERGENCY BATTERY BACKUP FOR 90 MINUTES OF OPERATION UPON LOSS OF NORMAL POWER.
- "A1" SAME AS TYPE "A" EXCEPT 1'x4' AND WITH 36W, 3500 LUMEN LEDS.
- "B" LED DOWNLIGHT FIXTURE, 6" APERTURE, STEEL HOUSING CLEAR SEMI-SPECULAR REFLECTOR WITH WHITE PAINTED FLANGE, 17W, 1500 LUMEN, 3500K LEDS, WITH 0-10V DIMMING DRIVER, MINIMUM DIMMING LEVEL 10%, HALO PDB15 SERIES OR APPROVED EQUAL.
- "BE" SAME AS TYPE "B" EXCEPT WITH BUILT-IN EMERGENCY BATTERY BACKUP FOR 90 MINUTES OF OPERATION UPON LOSS OF NORMAL POWER.
- "B1" LED VANDAL RESISTANT DOWNLIGHT FIXTURE, 6" APERTURE, STEEL HOUSING CLEAR SEMI-SPECULAR REFLECTOR WITH WHITE PAINTED FLANGE, CLEAR TEMPERED GLASS LENS, 27W, 1500 LUMEN, 4000K LEDS, FAILSAFE FVR6 SERIES OR APPROVED EQUAL.
- "B1E" SAME AS TYPE "B1" EXCEPT WITH BUILT-IN COLD WEATHER EMERGENCY BATTERY BACKUP FOR 90 MINUTES OF OPERATION UPON LOSS OF NORMAL POWER.
- "C" LED WALL MOUNTED DIRECT/INDIRECT FIXTURE, 8' LONG STEEL HOUSING WITH WHITE FINISH, ACRYLIC LENS, 37W, 3560 LUMEN, 3500K LEDS, FINELITE SERIES 12-WD-ID-LED OR APPROVED EQUAL.
- "D" LED SURFACE MOUNTED WRAPAROUND FIXTURE, 4' LONG STEEL HOUSING WITH WHITE FINISH, ACRYLIC LENS, 40W, 4000 LUMEN, 3500K LEDS, METALUX SLWP SERIES OR APPROVED EQUAL.
- "E" DECORATIVE INCANDESCENT 5.6" DIA PENDANT FIXTURE AS SELECTED BY ARCHITECT, (1) 50W GUS 3 BASE W/1 LAMP, PROVIDE ALL CONNECTIONS AND TRANSFORMERS AS RECOMMENDED BY MANUFACTURE. LBL LIGHTING - HOVER PENDANT.
- "F" WALL MOUNTED EXTERIOR LENSED TRAPEZOIDAL WEDGE-SHAPED SCONCE, DIE-CAST ALUMINUM HOUSING, TYPE III DISTRIBUTION, 25W, 2700 LUMEN, 4000K LEDS, BRONZE FINISH, WET LOCATION LISTED, FLAT TEMPERED GLASS LENS, GASKETED DOOR, FULL CUTOFF PERFORMANCE. MCGRAW EDISON IST SERIES OR APPROVED EQUAL.
- "G" LED LOW PROFILE UNDERCABINET LIGHTING FIXTURE, ALUMINUM HOUSING, HIGH IMPACT ACRYLIC LENS, WHITE POWDER COAT FINISH, 48" LENGTH, 20W, 1320 LUMEN, 3500K LEDS, HALO HUTO SERIES OR APPROVED EQUAL.
- "G2" SAME AS "G" EXCEPT 24" LENGTH, 10W, 660 LUMEN LEDS.
- "H" LED CHAIN HUNG STRIP LIGHT 4' LONG, COLD-ROLLED CODE GAUGE STEEL HOUSING, WHITE FINISH, 42W, 4725 LUMEN, 3500K LEDS, MOUNT FIXTURE 8" AFF, METALUX SNLED SERIES OR APPROVED EQUAL.
- "HE" SAME AS TYPE "H" EXCEPT WITH BUILT-IN EMERGENCY BATTERY BACKUP FOR 90 MINUTES OF OPERATION UPON LOSS OF NORMAL POWER.
- "J" LED PENDANT MOUNTED DIRECT/INDIRECT FIXTURE, 8' LONG STEEL HOUSING WITH WHITE FINISH, ACRYLIC LENS, 75W, 6875 LUMEN, 3500K LEDS, FINELITE SERIES 12-LED-ID OR APPROVED EQUAL.
- "K" LED SITE MOUNTED LIGHTING FIXTURE, DIE-CAST ALUMINUM HOUSING WITH CARBON BRONZE FINISH, 18W, 980 LUMEN, 3500K LEDS, WET LOCATION LISTED, FLAT TEMPERED GLASS LENS, FULLY GASKETED, REFER TO SHEET E1.1 BASE DETAIL FOR MORE MOUNTING INFORMATION. LUMARK LIGHTING XTOR SERIES OR APPROVED EQUAL.
- "X" LED EXIT SIGN WITH CHEVRONS AS INDICATED, FACES AS INDICATED, UNIVERSAL MOUNT, RED LETTERS ON WHITE THERMOPLASTIC HOUSING, UNIVERSAL VOLTAGE, SHADED ON SYMBOL INDICATES ILLUMINATED FACE(S). LITHONIA ZLIN SERIES OR APPROVED EQUAL.

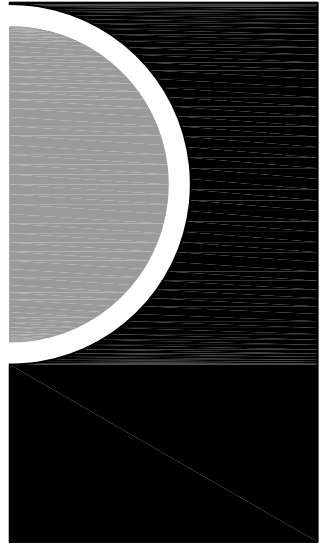
KEY NOTES:

- ① ALL EXIT LIGHTS AND NIGHT LIGHTS SHALL BE WIRED TO AREA LIGHTING CIRCUIT AHEAD OF ANY LOCAL AND AUTOMATIC LIGHTING CONTROL.
- ② PROVIDE WITH EMERGENCY BATTERY BACKUP COMPATIBLE WITH EXISTING LED FIXTURE FOR 90 MINUTE OPERATION UPON LOSS OF NORMAL POWER.



1  
E1-01 Lighting New Work Plan  
3/16" = 1'-0"

PARTNERS



PARTNERS in Architecture, PLC

65 MARKET STREET  
MOUNT CLEMENS, MI 48043  
P 586.469.3600  
F 586.469.3607

Statement of Intellectual Property

The ideas, concepts, drawings and thoughts conveyed herein are the intellectual property of PARTNERS in Architecture, PLC, 65 Market Street, Mount Clemens, MI 48043 (P 586.469.3600). This set of drawings, in whole or in part, may not be reproduced, without the written consent of PARTNERS in Architecture, PLC. This information is protected under U.S. Copyright Law, all rights reserved.

© Copyright 2016

CONSULTANT



KEY PLAN

OWNER

Village of Beverly Hills  
18500 W 13 Mile Road  
Beverly Hills, MI 48025

PROJECT NAME

Village of Beverly Hills  
Office Renovation

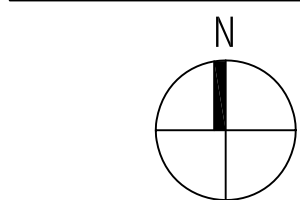
18500 W 13 Mile Road  
Beverly Hills, MI 48025

PROJECT NO.

15-161

ISSUES / REVISIONS

Bidding - Construction 04/01/2016  
Addendum - 02 04/18/2016



DRAWN BY

CB

CHECKED BY

SW

APPROVED BY

SW

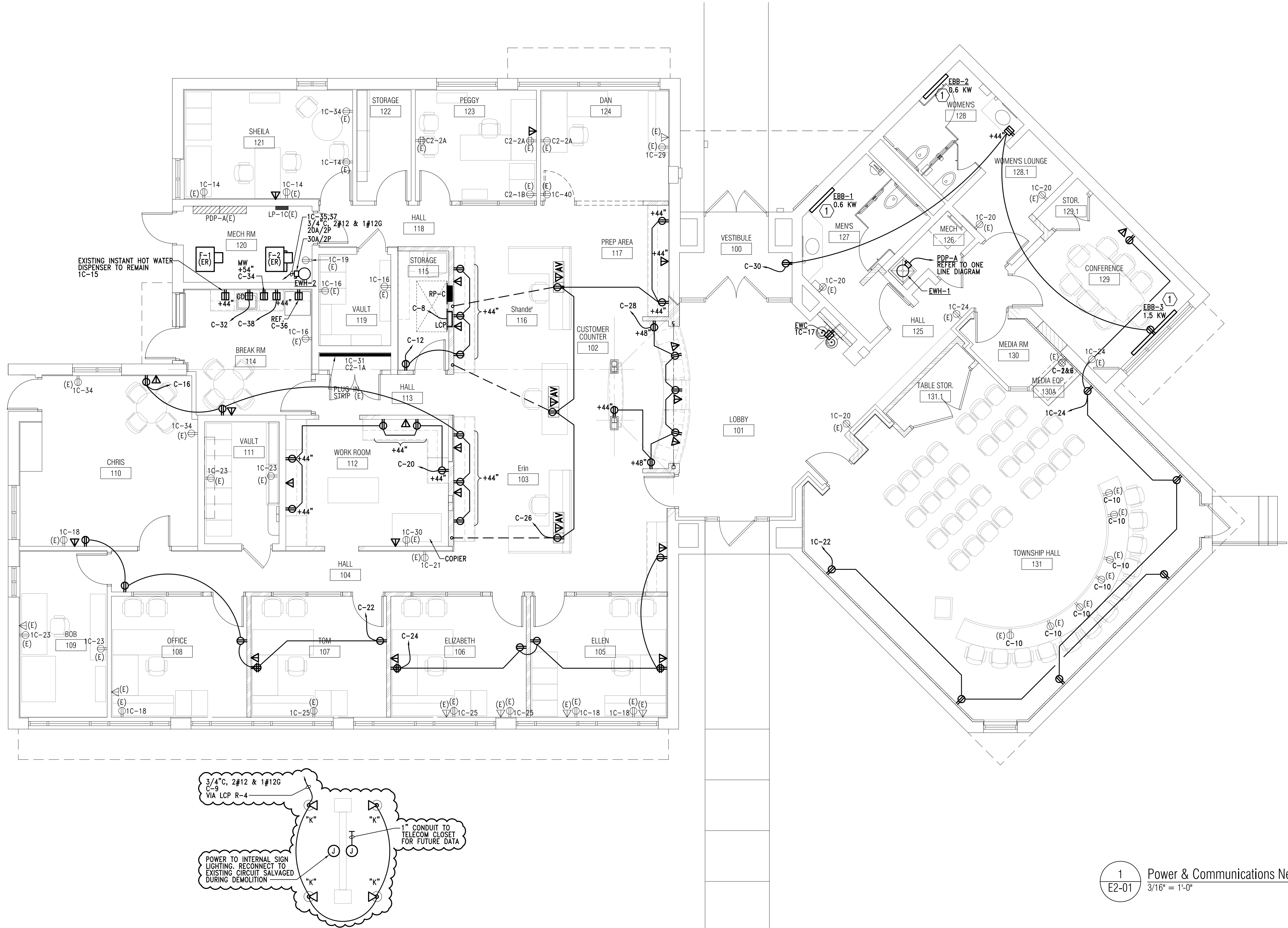
SHEET NAME

LIGHTING NEW  
WORK PLAN

SHEET NO.

E1-01

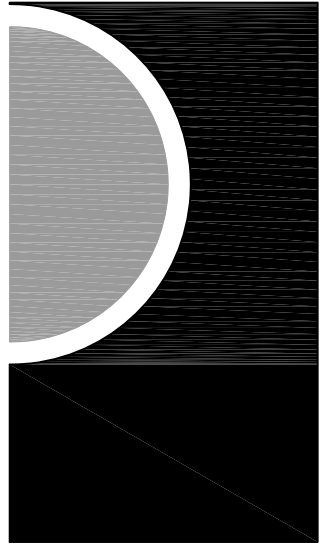
NOT FOR CONSTRUCTION



KEY NOTES:

- ① RECONNECT NEW BASE BOARD HEATER TO EXISTING CONDUIT AND WIRE SALVAGED DURING DEMOLITION.

PARTNERS



PARTNERS in Architecture, PLC

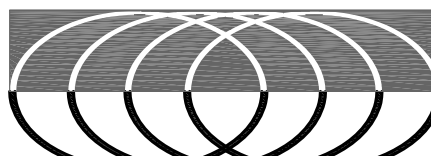
65 MARKET STREET  
MOUNT CLEMENS, MI 48043  
P 586.469.3600  
F 586.469.3607

Statement of Intellectual Property

The ideas, concepts, drawings and thoughts conveyed herein are the intellectual property of PARTNERS in Architecture, PLC, 65 Market Street, Mount Clemens, MI, 48043 (P 586.469.3600). This set of drawings, in whole or in part, may not be reproduced, without the written consent of PARTNERS in Architecture, PLC. This information is protected under U.S. Copyright Law, all rights reserved.

© Copyright 2016

CONSULTANT



MAENGINEERING  
MECHANICAL/ELECTRICAL  
200 E. Brown Street  
Birmingham, Michigan 48009  
11248122811610  
112481228116308

KEY PLAN

OWNER

Village of Beverly Hills  
18500 W 13 Mile Road  
Beverly Hills, MI 48025

PROJECT NAME

Village of Beverly Hills  
Office Renovation

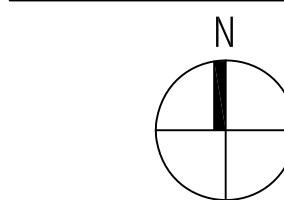
18500 W 13 Mile Road  
Beverly Hills, MI 48025

PROJECT NO.

15-161

ISSUES / REVISIONS

Bidding - Construction 04/01/2016  
Addendum - 02 04/18/2016



DRAWN BY

CB

CHECKED BY

SW

APPROVED BY

SW

SHEET NAME

POWER &  
COMMUNICATIONS  
NEW WORK PLAN

SHEET NO.

E2-01

NOT FOR CONSTRUCTION