

**ADDENDUM NO. 3**

**2016 SINKING FUND IMPROVEMENTS  
DISTRICT WINDOW AND DOOR REPLACEMENTS  
OWOSSO PUBLIC SCHOOLS  
OWOSSO, MICHIGAN**

**TO: ALL PROSPECTIVE BIDDERS ON THE SUBJECT PROJECT**  
**RE: CHANGES TO BIDDING DOCUMENTS**

**Acknowledge Receipt of this Addendum on Page P-1  
of the Bidform (Proposal) where indicated.**

**Project Additions:**

1. Replace flooring in areas indicated on drawing DA-1287-10.
  - a. Remove and Dispose of Asbestos floor tile and mastic.
    - i. Asbestos abatement shall be done in accordance to all applicable Federal, State, and Local requirements.
  - b. Install new VCT flooring and base.
    - i. Proposed flooring shall be Mannington Mills, Color "Wheat (123)" or Engineer approved equal (See Technical Specification 09660).

**Specifications:**

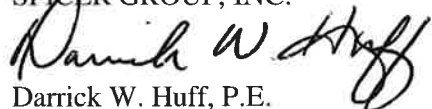
1. Technical Specification 9660 "Resilient Flooring Materials"

**Drawings:**

2. DA-1287-10 (A-9) "Owosso High School Floor Replacements"

Please sign the Acknowledgment below and attach this Addendum No. 3 to the front of your bidding document. Acknowledge the same in the Bid Form (Proposal).

Prepared by:  
SPICER GROUP, INC.



Darrick W. Huff, P.E.  
Project Manager  
March 11, 2016

**ACKNOWLEDGMENT**

BIDDER: \_\_\_\_\_

BY: \_\_\_\_\_

DATE: \_\_\_\_\_

## SECTION 09660

### RESILIENT FLOORING MATERIALS

#### 1. PART 1 GENERAL

##### 1.1 SUMMARY

- A. This Section includes the following:
  - 1. Solid vinyl floor tile.
  - 2. Resilient wall base and accessories.

##### 1.2 QUALITY ASSURANCE

- A. **Installer Qualifications:** Engage an experienced installer to perform work of this Section who has specialized in installing resilient products similar to those required for this Project and with a record of successful in-service performance.
- B. **Source Limitations:** Obtain each type, color, and pattern of product specified from one source with resources to provide products of consistent quality in appearance and physical properties without delaying the Work.
- C. **Fire-Test-Response Characteristics:** Provide products with the following fire-test-response characteristics as determined by testing identical products per test method indicated below by a testing and inspecting agency acceptable to authorities having jurisdiction.
  - 1. **Critical Radiant Flux:** 0.45 W/sq. cm or greater when tested per ASTM E 648.
  - 2. **Smoke Density:** Maximum specific optical density of 450 or less when tested per ASTM E 662.

##### 1.3 DELIVERY, STORAGE, AND HANDLING

- A. Deliver products to Project site in manufacturer's original, unopened cartons and containers, each bearing names of product and manufacturer, Project identification, and shipping and handling instructions.
- B. Store products in dry spaces protected from the weather, with ambient temperatures maintained between 50 and 90 deg F (10 and 32 deg C).
- C. Store tiles on flat surfaces.
- D. Move products into spaces where they will be installed at least 48 hours before installation, unless longer conditioning period is recommended in writing by manufacturer.

##### 1.4 PROJECT CONDITIONS

- A. Maintain a temperature of not less than 70 deg F (21 deg C) or more than 95 deg F (35 deg C) in spaces to receive products for at least 48 hours before installation, during installation, and for at least 48 hours after installation, unless manufacturer's written recommendations specify longer time periods. After post-installation period, maintain a temperature of not less than 55 deg F (13 deg C) or more than 95 deg F (35 deg C).
- B. Do not install products until they are at the same temperature as the space where they are to be installed.

- C. Close spaces to traffic during flooring installation and for time period after installation recommended in writing by manufacturer.
- D. Install tiles and accessories after other finishing operations, including painting, have been completed.
- E. Where demountable partitions and other items are indicated for installation on top of resilient tile flooring, install tile before these items are installed.
- F. Do not install flooring over concrete slabs until slabs have cured and are sufficiently dry to bond with adhesive, as determined by flooring manufacturer's recommended bond and moisture test.

#### 1.5 EXTRA MATERIALS

- A. Furnish extra materials described below that match products installed, are packaged with protective covering for storage, and are identified with labels describing contents.
  - 1. Furnish not less than one box for each 50 boxes or fraction thereof, of each type, color, pattern, class, wearing surface, and size of resilient tile flooring installed.
  - 2. Furnish not less than 10 linear feet (3 linear m) for each 500 linear feet (150 linear m) or fraction thereof, of each type, color, pattern, and size of resilient accessory installed.
  - 3. Deliver extra materials to Owner.

### 2. PART 2 PRODUCTS

#### 2.1 MANUFACTURERS

- A. Available Products: Subject to compliance with requirements, products that may be incorporated into the Work include, but are not limited to the following:
  - 1. Mannington Mills. Color "Wheat (123)"
  - 2. Or Engineer approved equal.

#### 2.2 RESILIENT TILE

- A. Solid Vinyl Tile: Products complying with ASTM F 1700 and with requirements specified by the Owner.

#### 2.3 RESILIENT ACCESSORIES

- A. 6 inch Height Vinyl Wall Base: Products complying with FS SS-W-40, Type II and as specified by the Owner. Color – Beige.

#### 2.4 INSTALLATION ACCESSORIES

- A. Trowel-able Leveling and Patching Compounds: Latex-modified, portland-cement-based formulation provided or approved by flooring manufacturer for applications indicated.
- B. Adhesives: Water-resistant type recommended by manufacturer to suit resilient products and substrate conditions indicated.
- C. Metal Edge Strips: Extruded aluminum with mill finish of width shown, of height required to protect exposed edge of tiles, and in maximum available lengths to minimize running joints.

### 3. PART 3 EXECUTION

#### 3.1 EXAMINATION

- A. Examine substrates, areas, and conditions where installation of resilient products will occur, with Installer present, for compliance with manufacturer's requirements. Verify that substrates and conditions are satisfactory for resilient product installation and comply with requirements specified.
- B. Concrete Subfloors: Verify that concrete slabs comply with ASTM F 710 and the following:
  - 1. Slab substrates are dry and free of curing compounds, sealers, hardeners, and other materials that may interfere with adhesive bond. Determine adhesion and dryness characteristics by performing bond and moisture tests recommended by flooring manufacturer.
  - 2. Subfloor finishes comply with requirements specified in Division 3 Section "Cast-in-Place Concrete" for slabs receiving resilient flooring.
  - 3. Subfloors are free of cracks, ridges, depressions, scale, and foreign deposits.
- C. Do not proceed with installation until unsatisfactory conditions have been corrected.

#### 3.2 REMOVAL

- A. Contractor shall remove existing flooring system to bare concrete.
- B. Contractor shall remove and dispose of all demolition materials from the site.

#### 3.3 PREPARATION

- A. General: Comply with resilient product manufacturer's written installation instructions for preparing substrates indicated to receive resilient products.
- B. Use trowel-able leveling and patching compounds according to manufacturer's written instructions to fill cracks, holes, and depressions in substrates.
- C. Remove coatings, including curing compounds, and other substances that are incompatible with flooring adhesives and that contain soap, wax, oil, or silicone using mechanical methods recommended by manufacturer. Do not use solvents.
- D. Broom and vacuum clean substrates to be covered immediately before product installation. After cleaning, examine substrates for moisture, alkaline salts, carbonation, or dust. Do not proceed with installation until unsatisfactory conditions have been corrected.

#### 3.4 TILE INSTALLATION

- A. General: Comply with tile manufacturer's written installation instructions.

#### 3.5 RESILIENT ACCESSORY INSTALLATION

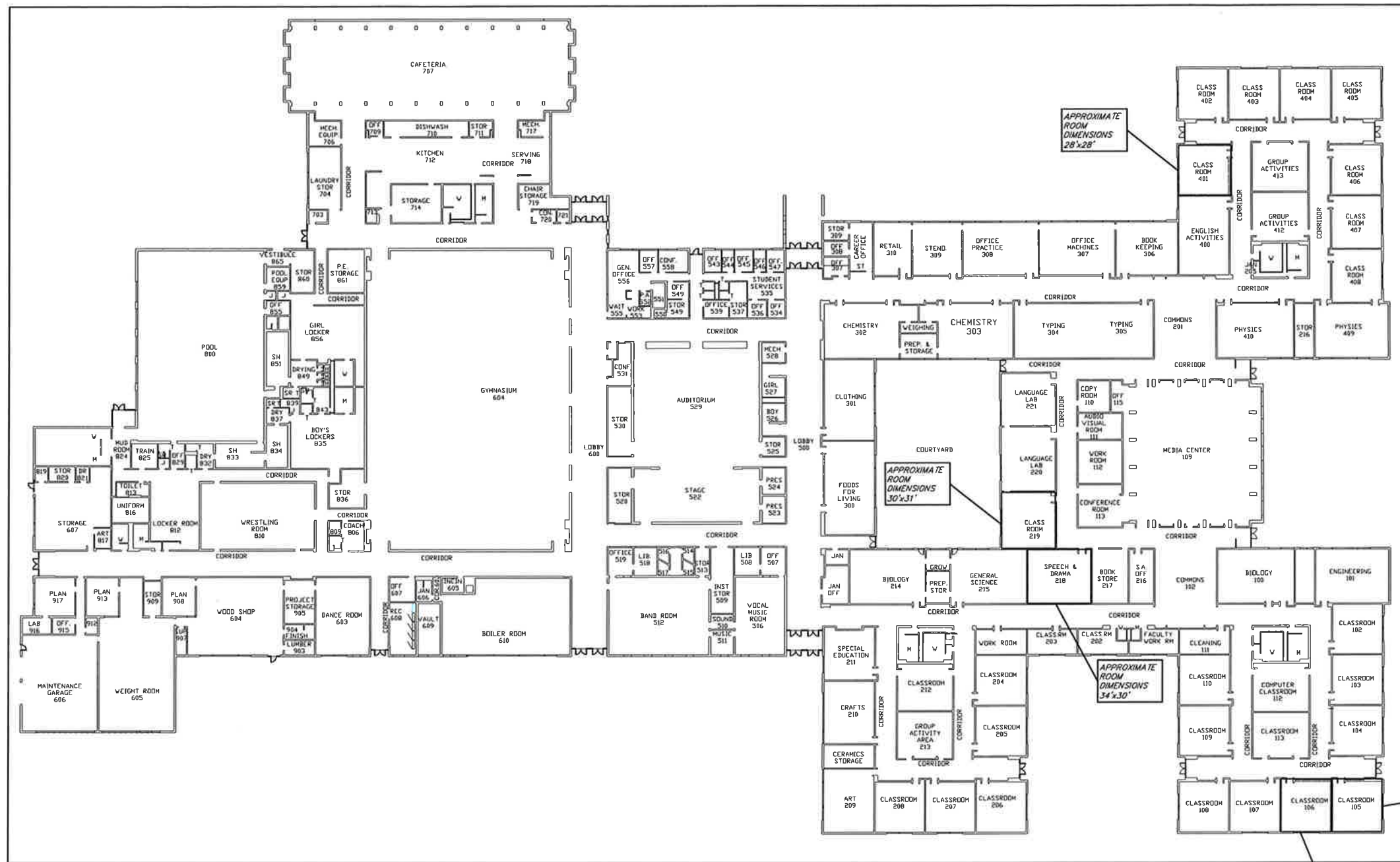
- A. General: Install resilient accessories according to manufacturer's written installation instructions.

### 3.6 CLEANING AND PROTECTING

- A. Perform the following operations immediately after installing resilient products:
  - 1. Remove adhesive and other surface blemishes using cleaner recommended by resilient product manufacturers.
  - 2. Sweep or vacuum floor thoroughly.
  - 3. Do not wash floor until after time period recommended by flooring manufacturer.
  - 4. Damp-mop floor to remove marks and soil.
  
- B. Protect flooring against mars, marks, indentations, and other damage from construction operations and placement of equipment and fixtures during the remainder of construction period. Use protection methods indicated or recommended in writing by flooring manufacturer.
  - 1. If recommended in writing by the manufacturer, apply protective floor polish to floor surfaces that are free from soil, visible adhesive, and surface blemishes.
    - a. Use commercially available product acceptable to flooring manufacturer.
    - b. Coordinate selection of floor polish with Owner's maintenance service.
  - 2. Cover products installed on floor surfaces with undyed, untreated building paper until inspection for Substantial Completion.
  - 3. Do not move heavy and sharp objects directly over floor surfaces. Place plywood or hardboard panels over flooring and under objects while they are being moved. Slide or roll objects over panels without moving panels.
  
- C. Clean floor surfaces not more than 4 days before dates scheduled for inspections intended to establish date of Substantial Completion in each area of Project. Clean products according to manufacturer's written recommendations.
  - 1. Before cleaning, strip protective floor polish that was applied after completing installation only if required to restore polish finish and if recommended by flooring manufacturer.
  - 2. After cleaning, reapply polish to floor surfaces to restore protective floor finish according to flooring manufacturer's written recommendations. Coordinate with Owner's maintenance program.

END OF SECTION

PLOTTING SCALE: 1/8" = 1'-0"  
 RET. F.B. PG.  
 ACAD FILE: 04-1287-10



**HIGH SCHOOL**  
 SCALE: NO SCALE

**KEY**  
 - INDICATES NEW FLOOR SYSTEM TO BE INSTALLED

BY	MARK	REVISIONS	DATE
THE WORK REPRESENTED BY THIS DRAWING WAS DESIGNED BY THE ENGINEER FOR THIS SPECIFIC APPLICATION AND SPECIFIC LOCATION DESCRIBED HEREON IN ACCORDANCE WITH THE CONDITIONS PRESENT AT THE TIME THE DESIGN WAS DONE. THE ENGINEER DOES NOT GUARANTEE AND WILL NOT BE LIABLE FOR ANY OTHER LOCATION, CONDITION, DESIGN OR PURPOSE.			
<b>WINDOW &amp; DOOR REPLACEMENTS            OWOSSO PUBLIC SCHOOLS            2016 SINKING FUND IMPROVEMENTS</b>			
<b>OWOSSO HIGH SCHOOL            FLOOR REPLACEMENTS</b>			
		SAGINAW OFFICE 230 S. Washington Ave. Saginaw, MI 48607 Tel. 989-754-4717 Fax. 989-754-4440 www.SpicerGroup.com	
DE. BY: LAM DR. BY: LAM		CH. BY: DMH APP. BY: DMH	
PROJECT NO. <b>123146SG2015</b>		SHEET <b>10</b> OF <b>A</b>	
STDS.		FILE NO. <b>DA-1287-10</b>	
DATE <b>MARCH, 2016</b> SCALE <b>AS SHOWN</b>		<b>9</b>	