

ADDENDUM #3

CONSTRUCTION MANAGEMENT PACKAGE - Bidding Requirements & General Conditions

BID PROPOSAL DEADLINE: WEDNESDAY, FEBRUARY 24, 2016 @ 11:00 A.M. (local time)

A. Section 00100 - Instructions to Bidders

1. This addendum is being issued in conjunction with Wakely Associates, Inc. Addendum No. 3 dated February 19, 2016.
2. **The bids are due on WEDNESDAY, FEBRUARY 24, 2016 @ 11:00 A.M. (local time).**
3. Late bids will not be accepted.
4. Bidders may visit and walk the project site after 3:00 p.m. M-F, by checking in at the main office.
5. Bidders shall sign, notarize, and submit the Proposal Execution Form (Section 00400) as a part of their sealed bid.
6. All bids are to be accompanied by a Bid Security in the amount of five (5) percent of the amount of the bid as a guarantee that if the proposal is accepted, the bidder will execute the contract and file the required bonds within ten (10) days after notice of award of contract.
7. All bids are to be accompanied with a signed and notarized Affidavit of Compliance form for the Iran Economic Sanctions Act. This form is available in Section 00421 of the Bidding Requirements & General Conditions Manual.
8. Apparent low, qualified bidders will be contacted for a post bid interview. All post bid interviews will take place at the office of McCarthy & Smith.

END OF ADDENDUM

WAKELY ASSOCIATES, INC.
ARCHITECTS
30500 Van Dyke Avenue Suite M7
Warren, Michigan 48093

ADDENDUM NO. THREE
FARMINGTON PUBLIC SCHOOLS-HS
2015 RENOVATIONS
Page 1 of 1 (write up only)

February 19, 2016

ADDENDUM NO. THREE to the plans and specifications for the FARMINGTON PUBLIC SCHOOLS, 2015 RENOVATIONS, HIGH SCHOOL RENOVATIONS, Farmington, MI, Architect's Project No. 151626C, dated February 1, 2016.

The above plans and specifications are modified, supplemented or augmented as follows, and this ADDENDUM NO. THREE, is hereby made a part of the contract documents.

Drawings A1.5FH and ET3.1G are being issued with this Addendum.

ARCHITECTURAL DRAWING ITEMS:

- ITEM NO. A1:** Refer to Drawing No. A1.5FH (re-issued):
- a. Refer to revised notes on details, 3, 4, 5, 6, 7, 8 and 9.
 - b. Refer to added detail 12.

MECHANICAL SPECIFICATION ITEMS:

- ITEM NO. MS1:** Refer to Specification Section 15785 (not re-issued).
- a. Add "Munters" to paragraph 2.4.A as an approved manufacturer.

MECHANICAL DRAWING ITEMS:

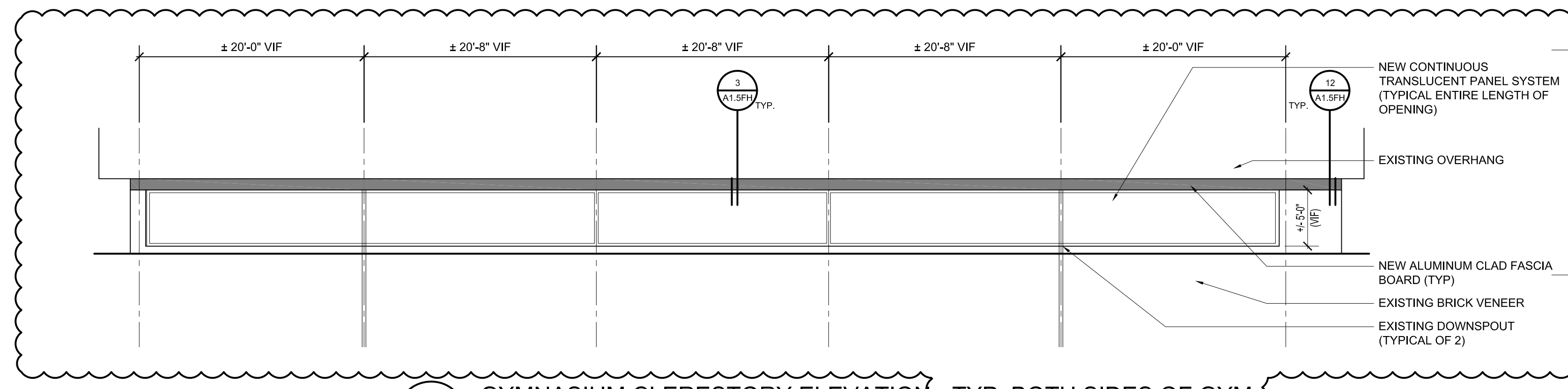
- ITEM NO. M1:** Refer to Drawing No. M7.2 (not re-issued).
- b. Revise the curb height on the Energy Recovery Unit schedule to 14".

TECHNOLOGY DRAWING ITEM:

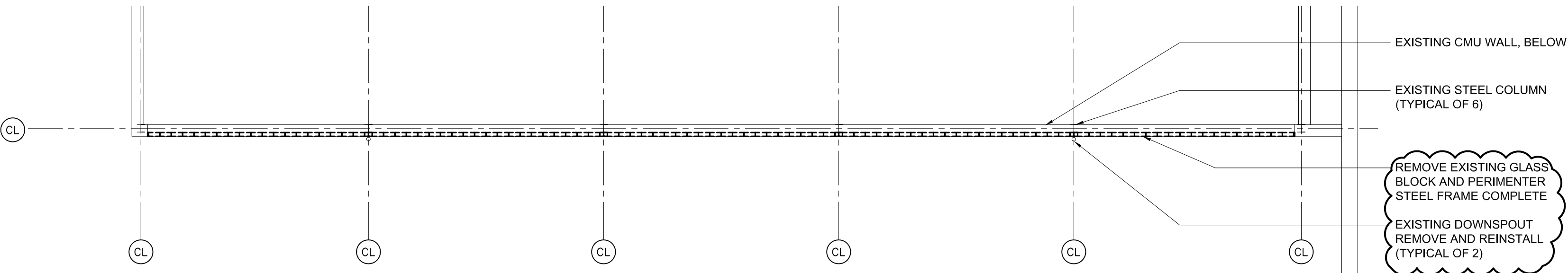
- ITEM NO. T1:** Refer to Drawing ET3.1G (re-issued):
- a. Circuit numbers and LCD display information was added to the drawing.

END OF ADDENDUM NO. 3

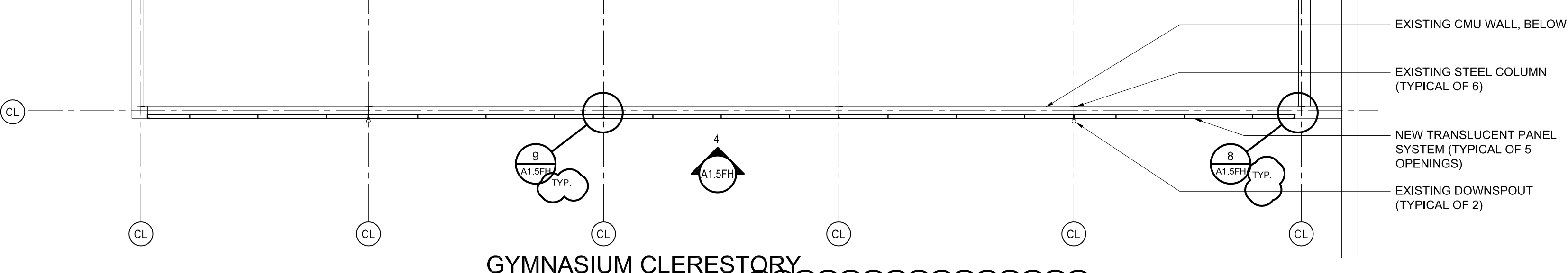
Cc: Doug Underwood, McCarthy & Smith



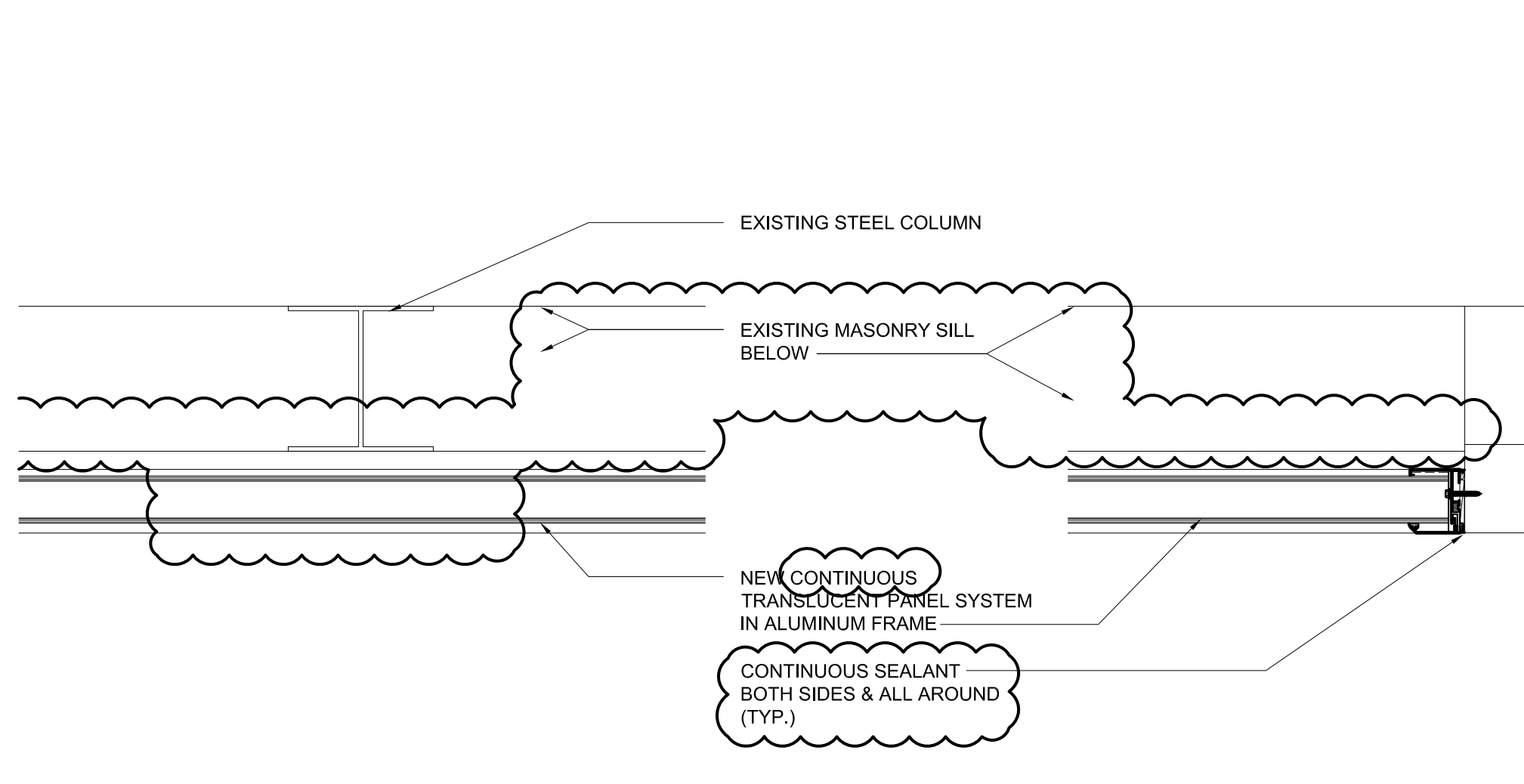
4 GYMNASIUM CLERESTORY ELEVATION - TYP. BOTH SIDES OF GYM
A1.5FH SCALE: 1/8" = 1'-0"



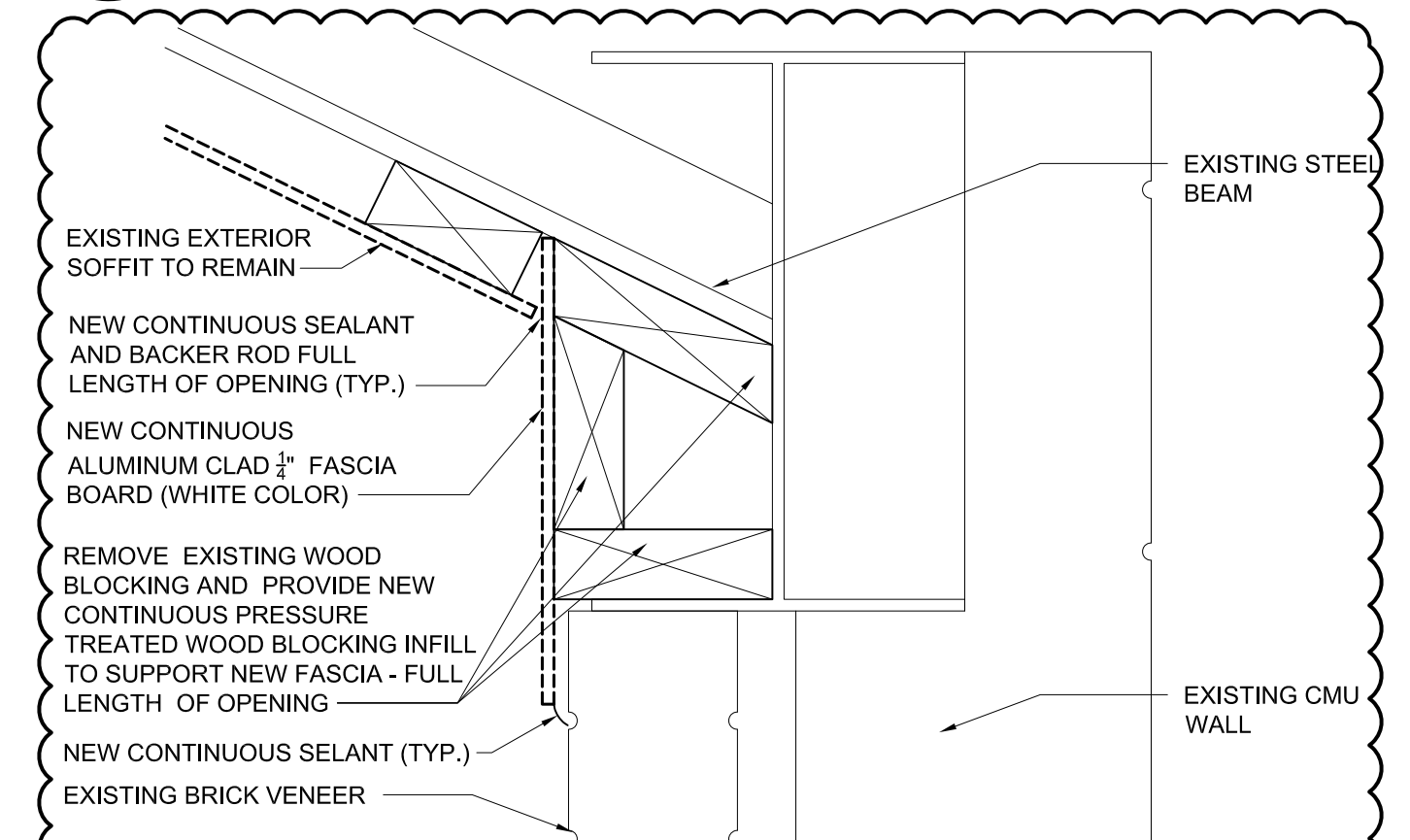
5 GYMNASIUM CLERESTORY PARTIAL DEMOLITION PLAN - TYP. BOTH SIDES OF GYM
A1.8FH SCALE: 1/8" = 1'-0"



6 GYMNASIUM CLERESTORY PARTIAL FLOOR PLAN - TYP. BOTH SIDES OF GYM
A1.8FH SCALE: 1/8" = 1'-0"

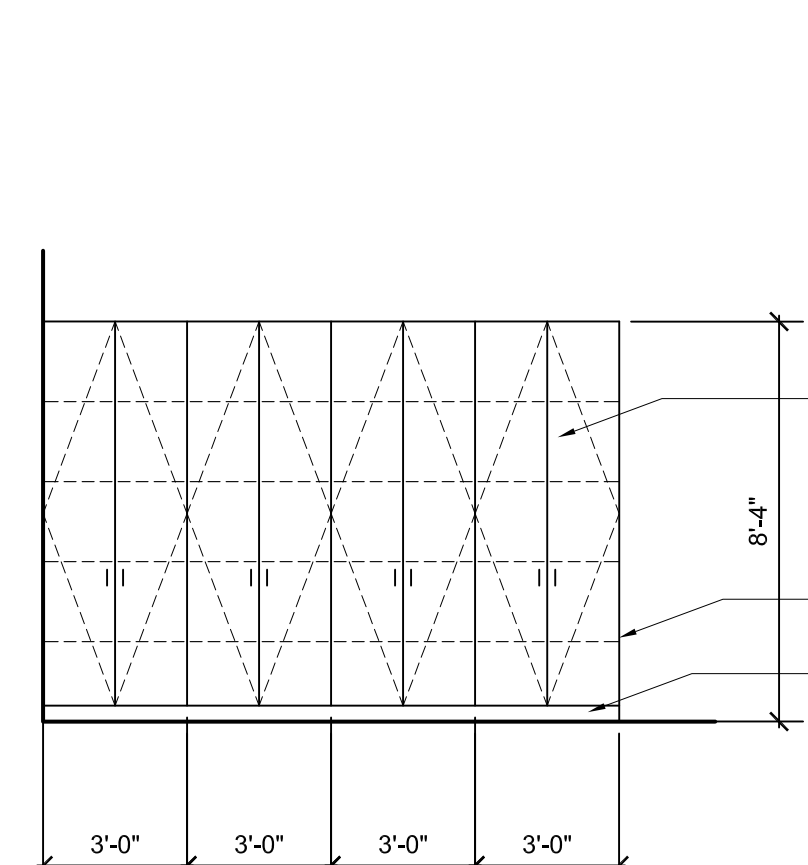


9 PLAN DETAIL AT COLUMN
A1.5FH SCALE: 1-1/2" = 1'-0"

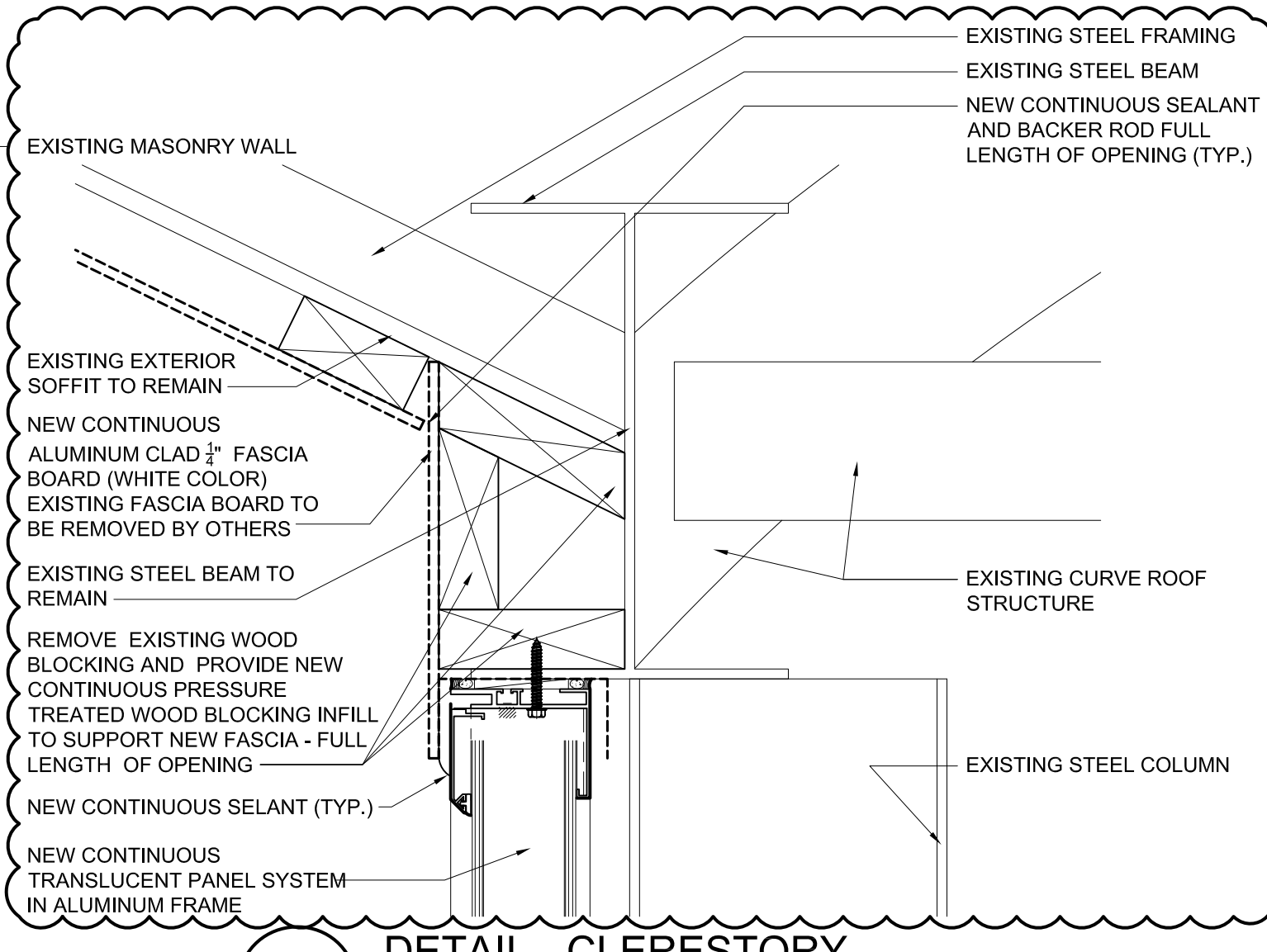


12 DETAIL - WALL EACH SIDE OF CLEARSTORY
A1.5FH SCALE: 3" = 1'-0"

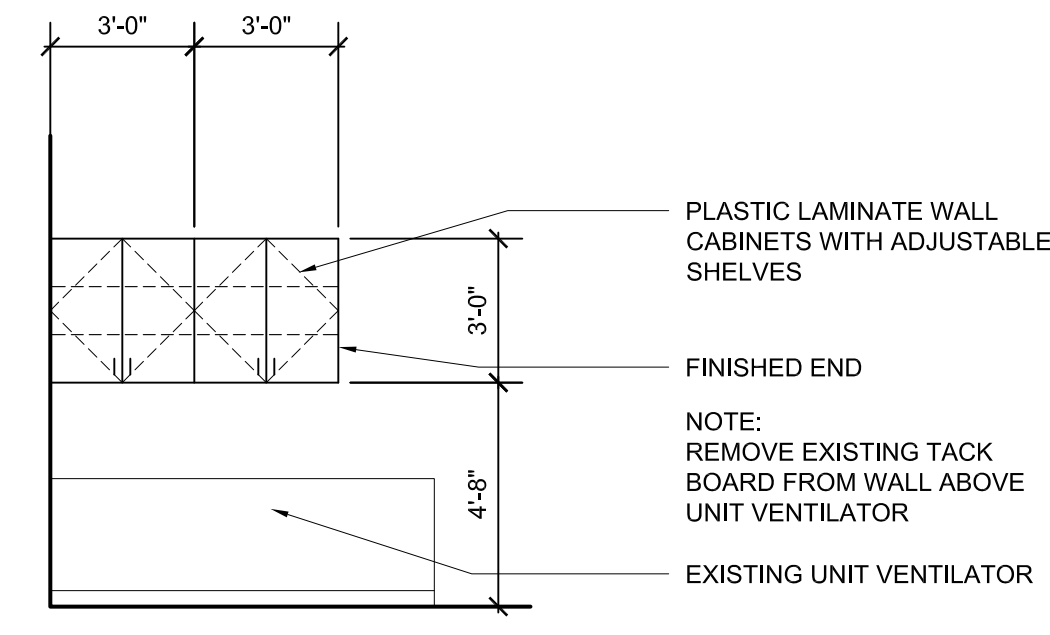
8 PLAN DETAIL AT JAMB
A1.5FH SCALE: 1-1/2" = 1'-0"



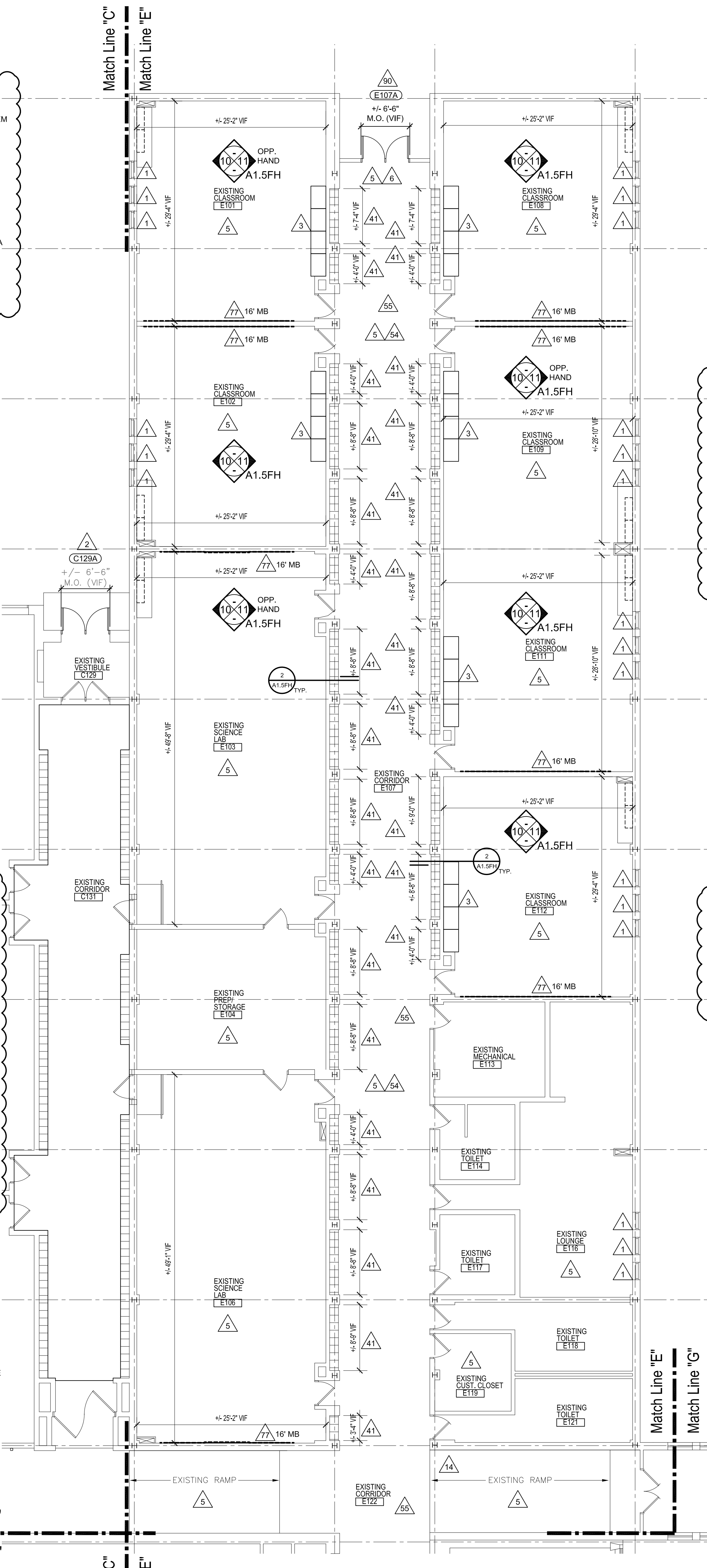
11 INTERIOR ELEVATION
A1.5FH SCALE: 1/4" = 1'-0"



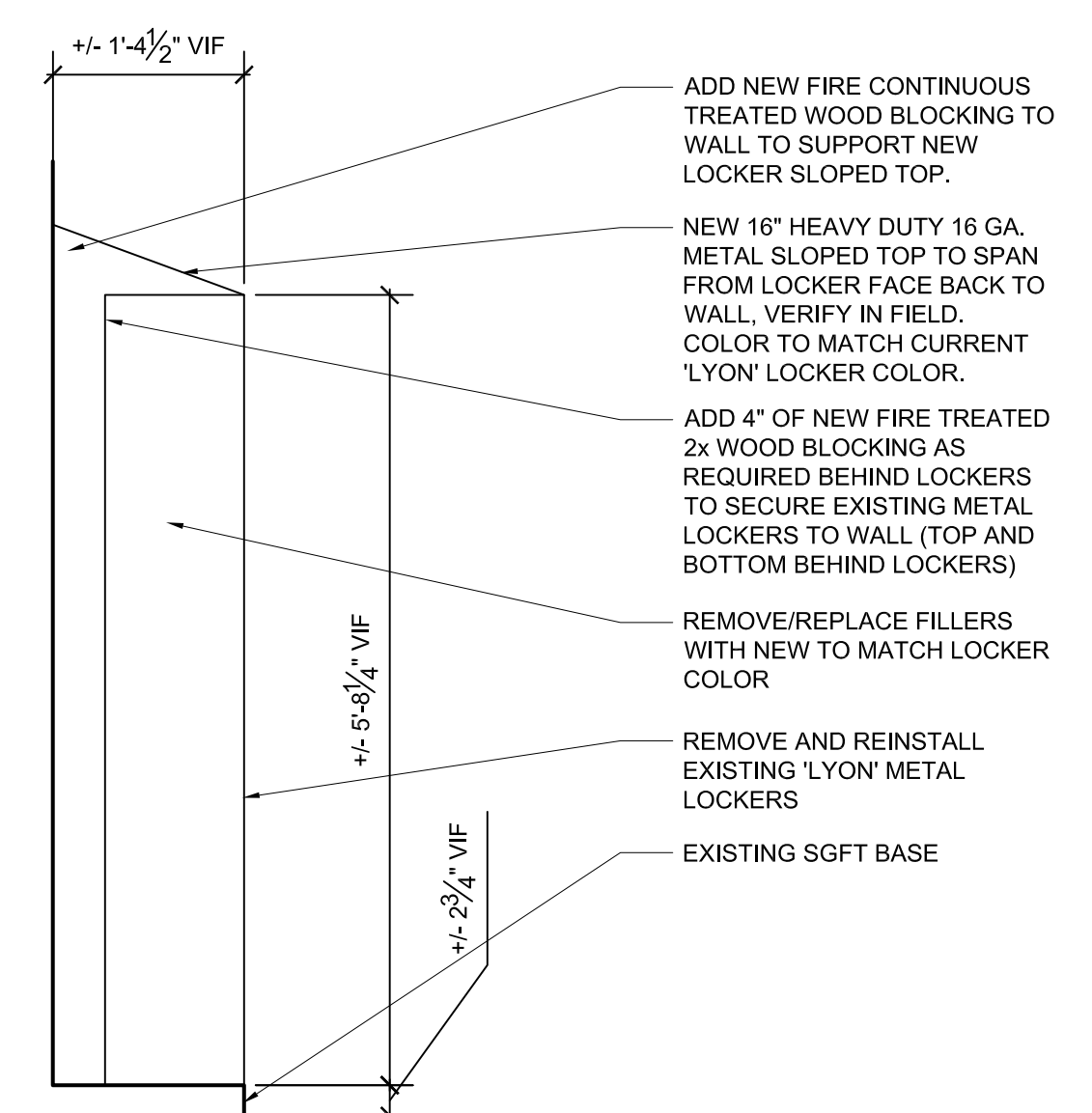
7 DETAIL - CLERESTORY
A1.5FH SCALE: 3" = 1'-0"



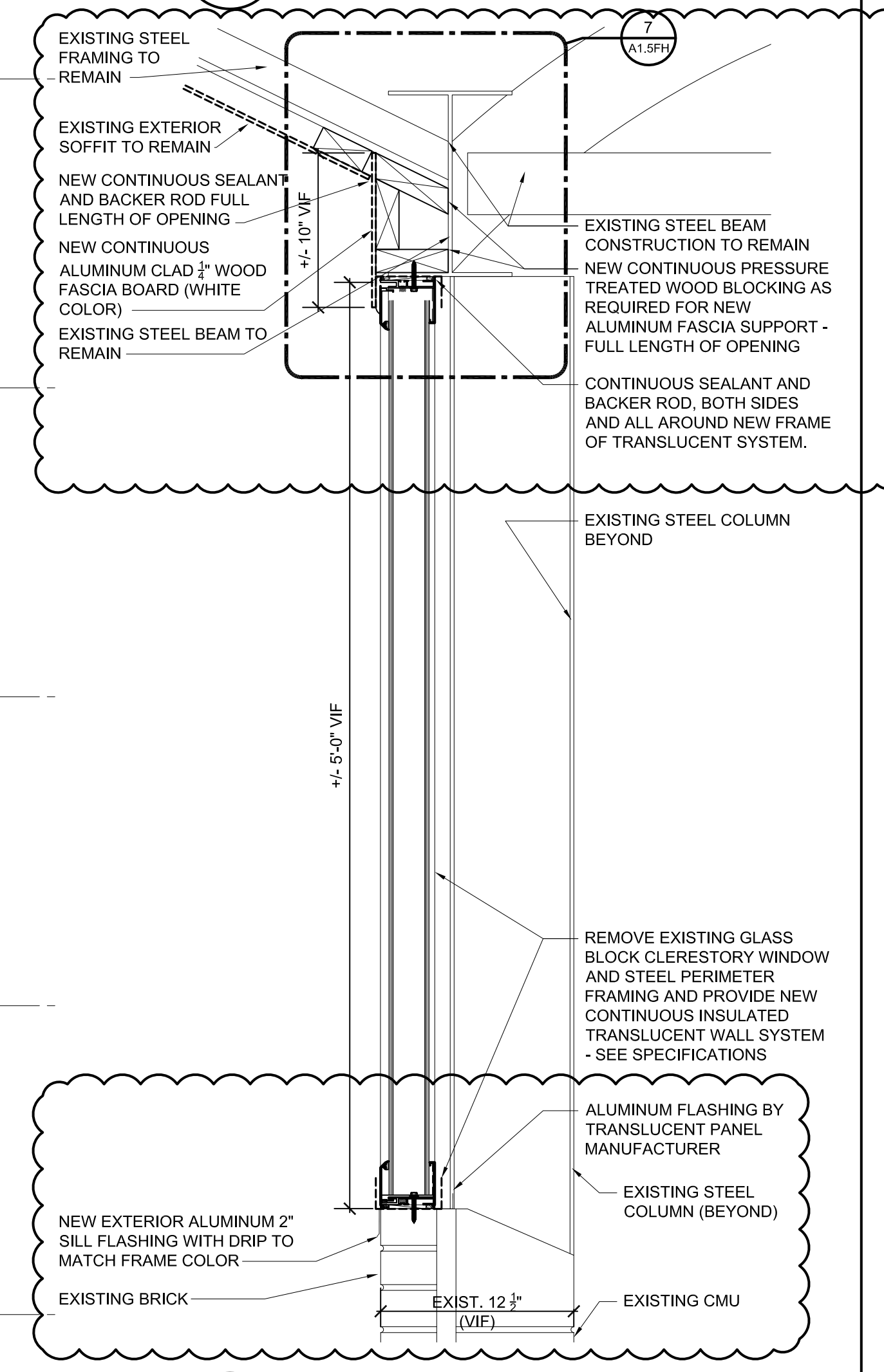
10 INTERIOR ELEVATION
A1.5FH SCALE: 1/4" = 1'-0"



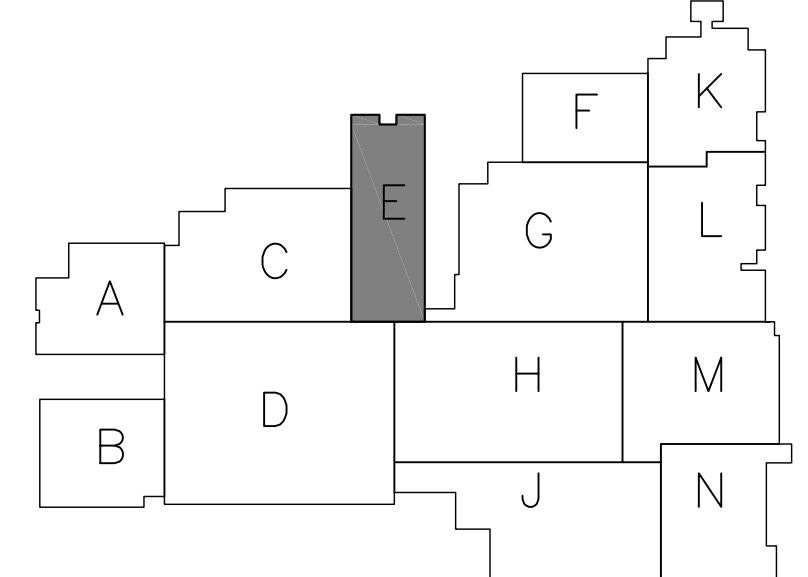
1 PARTIAL FLOOR PLAN FIRST FLOOR - AREA 'E'
A1.0FH SCALE: 1/8" = 1'-0"



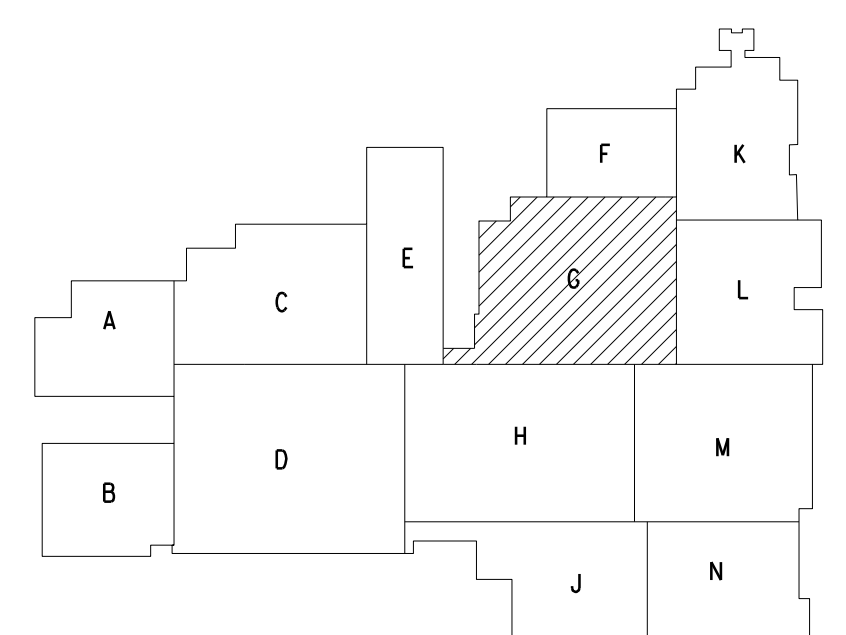
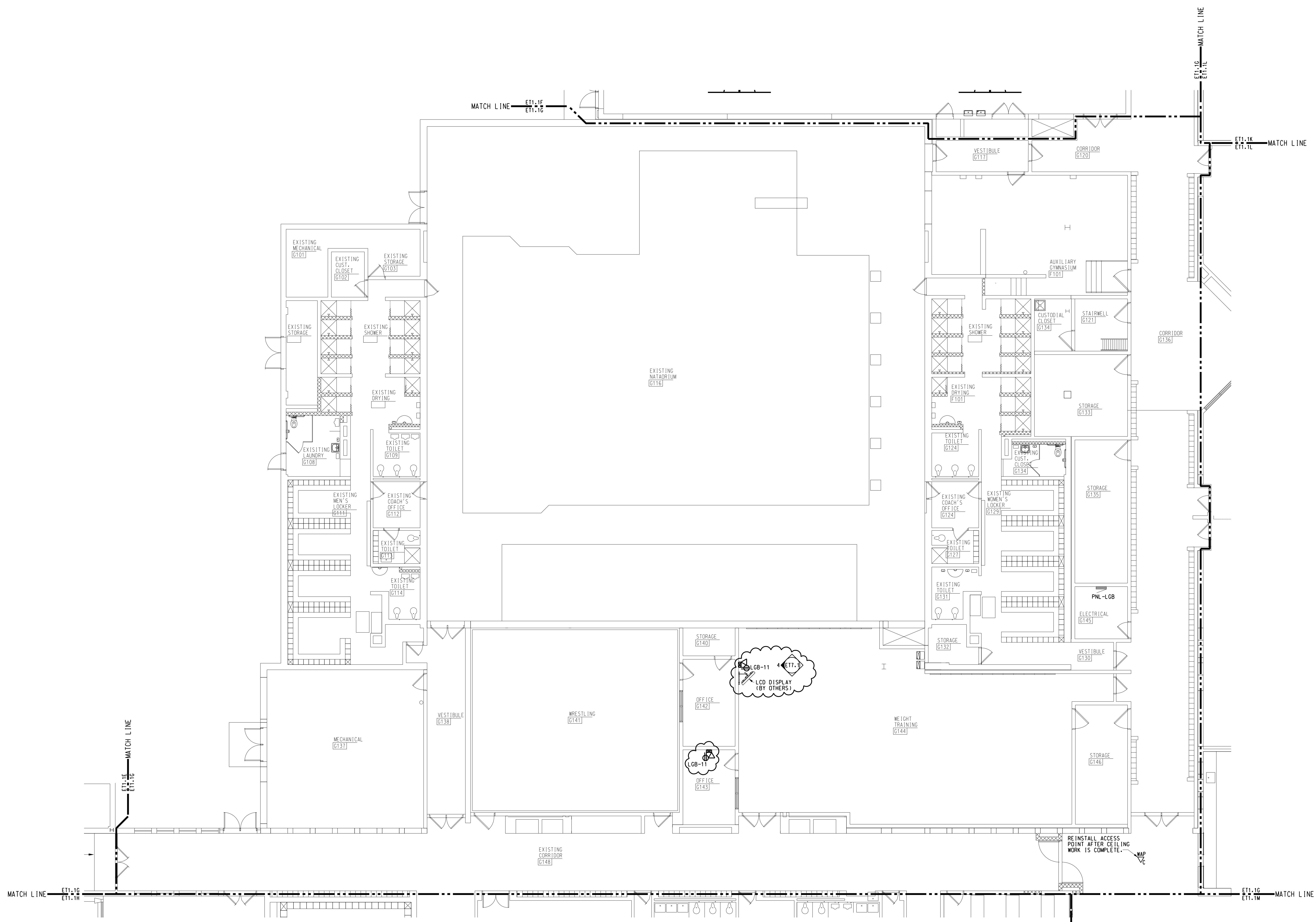
2 SECTION - LOCKERS
A1.5FH SCALE: 3/4" = 1'-0"



3 SECTION - CLERESTORY
A1.5FH SCALE: 1-1/2" = 1'-0"

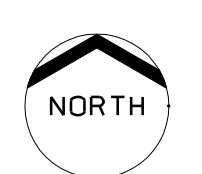


KEY PLAN
NOT TO SCALE



KEY PLAN

FARMINGTON HIGH NEW
TECHNOLOGY PLAN: AREA G
1/8" = 1'-0"



FIRST LEVEL NEW WORK
TECHNOLOGY PLAN: AREA G

- PRELIMINARY
- DESIGN DEVELOPMENT
- CONSTRUCTION
- FINAL RECORD

DRAWN BY L. NAPOLI
CHECKED BY S. TYBURSKI

REVISIONS	DATE
BIDS	2-1-16
ADD NO 2	2-1-16
ADD NO 3	2-18-16

DATE: OCTOBER 7, 2015
SHEET NO.

ET3.1G

JOB NO.
151626C