

OWOSSO PUBLIC SCHOOL DISTRICT 2015 SINKING FUND IMPROVEMENTS

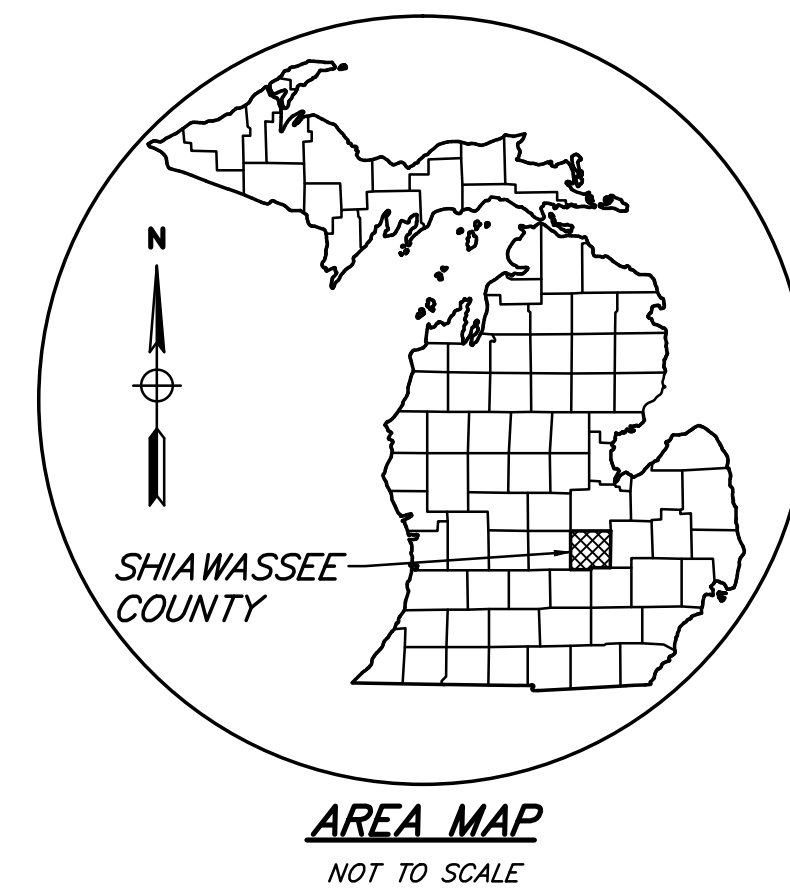
PLAN INDEX		
FILE NO.	DESCRIPTION	SHT. #
D-5103-01	COVER SHEET	1
D-5103-02	OWOSSO HIGH SCHOOL - SOCCER FIELD IMPROVEMENTS	2
D-5103-03	OWOSSO HIGH SCHOOL - BASEBALL FIELD IMPROVEMENTS	3
D-5103-04	BRYANT ELEMENTARY SCHOOL - SANITARY IMPROVEMENTS	4
D-5103-05	WILLMAN FIELD - DRAINAGE IMPROVEMENTS	5
D-5103-06	WILLMAN FIELD - LIGHTING IMPROVEMENTS	6
D-5103-07	OWOSSO HIGH SCHOOL GYM IMPROVEMENTS	7
DE-1011-01	OWOSSO HIGH SCHOOL GYM LIGHTING IMPROVEMENTS	8
D-5103-08	CONSTRUCTION DETAILS	9

EXISTING ITEMS LEGEND

- | | |
|------------------------------|---------------------------|
| ○ - MANHOLE | ✕ - FENCE |
| ⊙ - CATCHBASIN | ⚡ - SPRINKLER |
| ⊠ - CURB CATCHBASIN | Ⓜ - RAILROAD SIGNAL |
| ⊕ - FIRE HYDRANT | Ⓜ - ANTENNA |
| ⊕ - GAS VALVE | Ⓜ - SATELLITE DISH |
| ⊕ - WATER VALVE | Ⓜ - AIR CONDITIONING UNIT |
| ● - POWER POLE | Ⓜ - SOIL BORING |
| ⊕ - TELEPHONE POLE | Ⓜ - SURVEY CORNER |
| ⊕ - POWER AND TELEPHONE POLE | Ⓜ - STUMP |
| ⊕ - LIGHT POLE | Ⓜ - WETLANDS |
| ⊕ - GUY ANCHOR AND POLE | Ⓜ - PINE |
| ⊕ - CABLE TV PEDESTAL | Ⓜ - BUSH |
| ⊕ - TELEPHONE PEDESTAL | Ⓜ - TREE |
| ⊕ - ELECTRICAL PEDESTAL | Ⓜ - MAIL BOX |
| ⊕ - TRANSFORMER | Ⓜ - SIGN |
| — - CONTOUR | |

ABBREVIATIONS

- BIT = BITUMINOUS
 BM = BENCH MARK
 CB = CATCH BASIN
 CF = CUBIC FEET
 CL = CENTERLINE
 CMP = CORRUGATED METAL PIPE
 CSP = CORRUGATED STEEL PIPE
 CONC = CONCRETE
 DIP = DUCTILE IRON PIPE
 ELEC = ELECTRICAL
 ELEV = ELEVATION
 ESM'T = EASEMENT
 EX OR EXIST = EXISTING
 FS = FINISH SURFACE
 FG = FINISH GRADE
 G = GUTTER
 HYD = HYDRANT
 INV = INVERT
 MH = MANHOLE
 MIN = MINIMUM
 NFL = NOT FIELD LOCATED
 NTS = NOT TO SCALE
 PROP = PROPOSED
 PVC = POLYVINYL CHLORIDE
 RCP = REINFORCED CONCRETE PIPE
 SAN = SANITARY
 STA = STATION
 STM = STORM
 SWR = SEWER
 TC = TOP OF CURB
 TELE = TELEPHONE
 TW = TOP OF WALK
 WM = WATER MAIN



PROPOSED ITEMS LEGEND

- | | |
|-------------------|-------------------------------|
| ○ - MANHOLE | --- SANITARY SEWER |
| ⊙ - CATCHBASIN | --- STORM SEWER |
| ⊕ - LIGHT POLES | --- ELEC - ELECTRICAL SERVICE |
| ⇒ - DRAINAGE FLOW | --- SIDEWALK RAMP |

SOIL EROSION & SEDIMENTATION CONTROL MEASURES

KEY	DETAIL	CHARACTERISTICS
7	Hydro-seeding	Effective on large areas Mulch tacking agent used to provide immediate protection until grass is rooted Should include prepared topsoil bed
36	Catch Basin, Drain Inlet	Collects high velocity concentrated runoff May use filter cloth over inlet
54	Geotextile Silt Fence	Controls and Contains sediment from sheet flow conditions. Fabric must be "tied" into the soil 6" or more to prevent underflow. Must be constructed of adequate strength filter fabric and stakes.

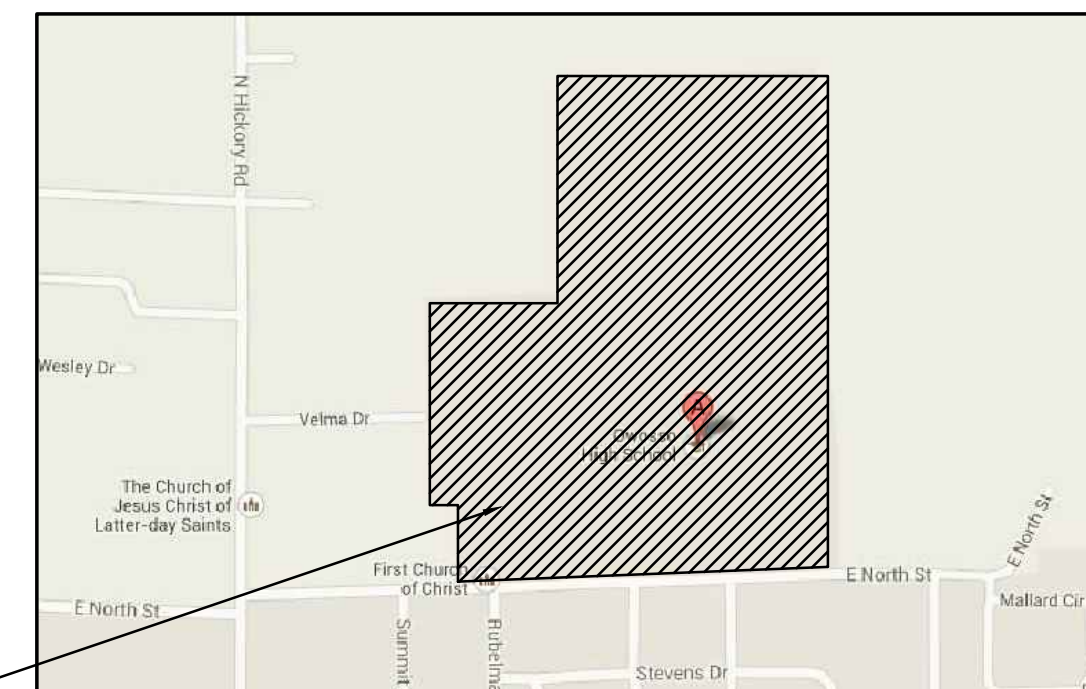
T - DENOTES TEMPORARY MEASURES
P - DENOTES PERMANENT MEASURES

CONTRACTOR SHALL CONFORM TO SOIL EROSION AND SEDIMENTATION CONTROL ACT, PART 91 OF PUBLIC ACT 451 OF 1994, AS AMENDED. ALL CATCH BASINS, ON THE SITE AND ADJACENT TO THE SITE, SHALL BE COVERED WITH CLOTH FILTERS FOR SOIL EROSION AND SEDIMENTATION CONTROL.

CONTACTS

- | | |
|--|---|
| TELEPHONE SERVICE
Verizon/Frontier Communications
c/o Engineering Department
224 West Exchange
Owosso, MI 48867
TEL (989) 723-0373 | GAS SERVICE
Consumers Energy
530 W. Willow
Lansing, MI 48909
TEL 517-374-2002 |
| ELECTRIC SERVICE
Consumers Energy
Tamara Elizey
TEL 989-729-3253 | PUBLIC WORKS
City of Owosso
301 W. Main Street
Owosso, MI 48867
TEL 989-725-0550 |
| COMMUNICATION SERVICE
Daystar, LLC
P.O. Box 250
Corunna, MI 48817
TEL 989-720-1000 | CABLE
Charter Communications
Gordon Brooks
2525 State Street
Saginaw, MI 48602
TEL 989-737-5356 |
| COMMUNICATION SERVICE
SRESO
Chris Suire
1025 N. Shiawassee Street
Corunna, MI 48817
TEL 989-743-3471 | |

PROPOSED PROJECT SITE
OWOSSO HIGH SCHOOL
765 E NORTH ST.
OWOSSO, MI. 48867



PROPOSED PROJECT SITE
BRYANT SCHOOL
925 HAMPTON ST.
OWOSSO, MI. 48867



PROPOSED PROJECT SITE
WILLMAN FIELD
301 S DEWEY ST.
OWOSSO, MI. 48867



LOCATION MAP
CITY OF OWOSSO
SHIAWASSEE COUNTY, MICHIGAN

SITE WORK

CONTRACTOR SHALL CALL "MISS DIG" 811 A MINIMUM OF 3 WORKING DAYS PRIOR TO ANY CONSTRUCTION FOR THE LOCATIONS OF EXISTING UNDERGROUND UTILITIES. THE EXISTING UTILITIES ON THESE DRAWINGS HAVE BEEN SHOWN ACCORDING TO THE BEST AVAILABLE INFORMATION. THE CONTRACTOR SHALL FIELD LOCATE ALL UTILITIES AND NOTIFY THE ENGINEER WHERE POSSIBLE CONFLICT EXISTS PRIOR TO BEGINNING CONSTRUCTION.

ELECTRIC SERVICE TO BUILDING AND PARKING LOT LIGHTS SHALL BE UNDERGROUND. ALL UTILITY COMPANY SERVICE LINES AND PAD LOCATIONS ARE SHOWN FOR REFERENCE ONLY.

PRIOR TO COMMENCING CONSTRUCTION, THE CONTRACTOR IS RESPONSIBLE FOR OBTAINING ALL PERMITS REQUIRED BY THE APPROPRIATE MUNICIPALITIES OR STATE OF MICHIGAN. CONSTRUCTION PROCEDURES SHALL CONFORM TO THE REQUIREMENTS OF THE APPROPRIATE MUNICIPALITIES. ALL DRIVES AND APPROACHES SHALL BE CONSTRUCTED ACCORDING TO REQUIREMENTS OF THE APPROPRIATE GOVERNING AUTHORITY.

ALL TRENCHED CONSTRUCTION UNDER GRAVEL, PAVED SURFACES OR UTILITIES SHALL BE BACKFILLED WITH CLASS II SAND OR OTHER APPROVED GRANULAR MATERIAL IN 12" LAYERS AND COMPACTED TO 95% OF ITS MAXIMUM UNIT WEIGHT.

UNPAVED AREAS SHALL BE SMOOTHLY GRADED AND THE SURFACE STABILIZED BY SEEDING OR OTHERWISE. THE MAXIMUM DESIRABLE SLOPE IS 3 HORIZONTAL TO 1 VERTICAL UNLESS NOTED OTHERWISE.

CONTRACTOR SHALL SAWCUT PAVEMENT AND CURB & GUTTER FOR A CLEAN EDGE TO INSTALL PROPOSED PAVEMENT AND CURB & GUTTER.

CONTRACTOR IS RESPONSIBLE TO MAINTAIN POSITIVE DRAINAGE PATTERN TO ENSURE NO PONDING OF WATER ON ADJACENT EXISTING AND PROPOSED PAVED SURFACES.

DIMENSIONS SHOWN ARE GIVEN TO THE BACK OF CURBS AND FACE OF BUILDINGS UNLESS NOTED OTHERWISE.

STORM SEWER

PIPE MATERIALS SHALL BE AS FOLLOWS:

- 12" DIAMETER AND ABOVE - CONCRETE PIPE, C-76, ASTM C-443 OR CORRUGATED PVC PIPE.
- LESS THAN 12" DIAMETER - CORRUGATED PVC PIPE, OR HIGH DENSITY POLYETHYLENE (HDPE), DUAL WALL, CORRUGATED.

SANITARY SEWER

ALL SANITARY SEWER SHALL BE PVC, SDR35, TYPE PSM PLASTIC, CONFORMING TO ANSI/ASTM D3034 WITH RUBBER GASKET JOINTS, UNLESS SPECIFIED OTHERWISE.

GENERAL

ALL PRODUCTS SHALL BE MANUFACTURER'S BEST BRAND OR GRADE AND INSTALLED AS PER MANUFACTURER'S RECOMMENDATIONS.

ALL WORK SHALL BE GUARANTEED FOR A MINIMUM OF ONE YEAR FROM THE DATE OF SUBSTANTIAL COMPLETION.

CONSTRUCT ALL MATERIALS STRAIGHT, PLUMB, AND LEVEL UNLESS SPECIFICALLY NOTED OR INDICATED OTHERWISE.

ALL WORK SHALL BE INSTALLED IN CONFORMANCE WITH FEDERAL, STATE, AND LOCAL - CODES, RULES, AND REGULATIONS. ALL MATERIALS SHALL BE INSTALLED IN CONFORMANCE WITH INDUSTRY STANDARDS AND THE ASSOCIATION THAT PERTAINS TO THE PARTICULAR PRODUCT. FOR EXAMPLE, AISC - AMERICAN INSTITUTE FOR STEEL CONSTRUCTION.

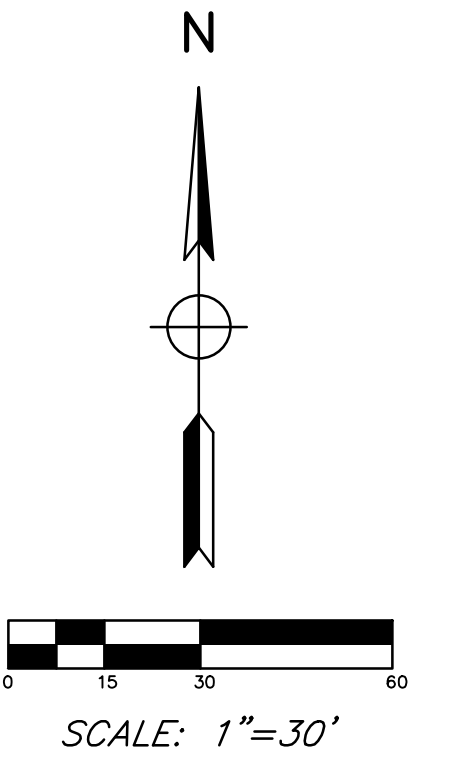
USE THE MOST CURRENT EDITION WHEN REFERRING TO INDUSTRY STANDARDS.

SITE PROTECTION: THE CONTRACTOR WILL BE RESPONSIBLE FOR PROTECTING ANY AND ALL ADJACENT EXISTING STRUCTURES AND UTILITIES DURING CONSTRUCTION. ANY DAMAGE INCURRED DURING CONSTRUCTION SHALL, AT A MINIMUM, BE RESTORED TO A STATE EQUAL TO ITS PRE-CONSTRUCTION STATE AT THE CONTRACTOR'S EXPENSE.

ALL CONSTRUCTION UNDER EXISTING OR PROPOSED PAVEMENT AND FUTURE UTILITIES, INCLUDING HOUSE SERVICES, SHALL BE COMPLETELY BACKFILLED WITH SAND, IN 12" LAYERS, AND COMPACTED TO NOT LESS THAN 95% OF ITS MAXIMUM UNIT WEIGHT.

THE EXISTING UTILITIES ON THESE DRAWINGS HAVE BEEN SHOWN ACCORDING TO THE BEST AVAILABLE INFORMATION. CONTRACTOR SHALL FIELD LOCATE ALL UTILITIES PRIOR TO BEGINNING CONSTRUCTION AND SHALL NOTIFY THE ENGINEER AS TO WHERE POSSIBLE CONFLICT EXISTS.

BY	MARK	REVISIONS	DATE
THE WORK REPRESENTED BY THIS DRAWING WAS DESIGNED BY THE ENGINEER FOR THIS SPECIFIC APPLICATION AND SPECIFIC LOCATION DESCRIBED HEREIN IN ACCORDANCE WITH THE CONDITIONS PREVALENT AT THE TIME THE DESIGN WAS DONE. THE ENGINEER DOES NOT GUARANTEE AND WILL NOT BE LIABLE FOR ANY OTHER LOCATION, CONDITION, DESIGN OR PURPOSE.			
OWOSSO PUBLIC SCHOOL DISTRICT OWOSSO, MICHIGAN			
2015 SINKING FUND IMPROVEMENTS OWOSSO PUBLIC SCHOOLS			
		SAGINAW OFFICE 230 S. Washington Ave. Saginaw, MI 48607 Tel. 989-754-4717 Fax. 989-754-4440 www.SpicerGroup.com	
DE. BY: AJS	CH. BY: MDN	PROJECT NO. 121889SG2014	
DR. BY: AJS	APP. BY: DWH	SHEET 1 OF 9	
STDS.		FILE NO.	D-5103-01
DATE	MARCH, 2015	SCALE	NONE



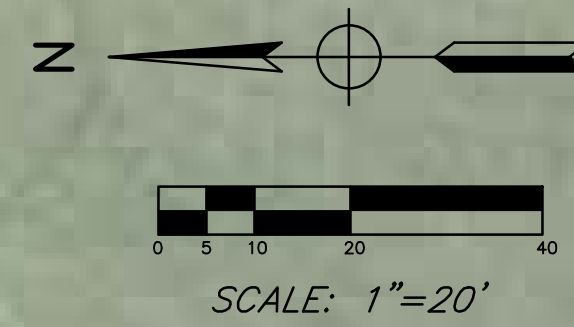
NOTES
 FENCE AND GATE DETAILS ON SHEET 9.
 APPROXIMATELY 950 LINEAL FEET OF FENCE

BENCHMARKS
 BM #4 - 1/2" REBAR 9"± WEST OF S.W. CORNER CONCRETE PAD OF NORTHERLY MOST SET OF BENCHES ON EAST SIDE OF OWOSSO HIGH SCHOOL. ELEV. = 753.56
 BM #5 - 1/2" REBAR 50"± EAST OF S.E. CORNER OWOSSO HIGH SCHOOL IN LINE WITH SOUTH WALL LINE. ELEV. = 753.11

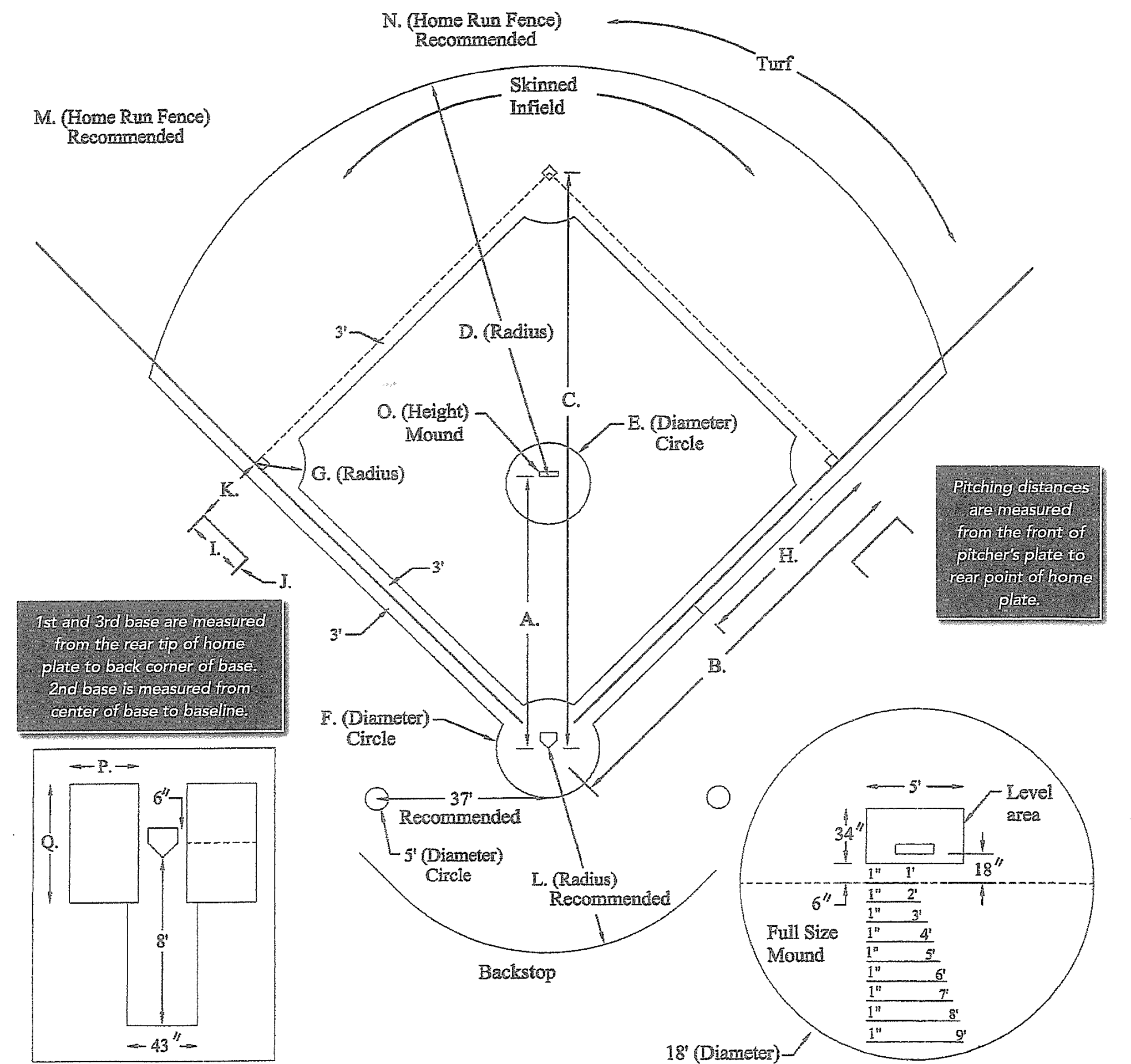
BY	MARK	REVISIONS	DATE
<p>OWOSSO PUBLIC SCHOOL DISTRICT OWOSSO, MICHIGAN</p> <p>2015 SINKING FUND SOCCER FIELD IMPROVEMENTS OWOSSO HIGH SCHOOL</p>			
		SAGINAW OFFICE 230 S. Washington Ave. Saginaw, MI 48607 Tel. 989-754-4717 Fax. 989-754-4440 www.SpicerGroup.com	
DE. BY: AJS	CH. BY: MDW	PROJECT NO. 121889SG2014	
DR. BY: AJS	APP. BY: DWH	SHEET 2 OF 9	
STDS.	DATE MARCH, 2015	FILE NO. D-5103-02	
SCALE 1"=30'			

ACAD FILE: PG. F.B. RET. PLOTTING SCALE:

APPROXIMATE LOCATION OF 2 1/2" PVC WATER CONNECTION. ACTUAL LOCATION TO BE FIELD LOCATED BY OWNER. FLOW +/- 45 GPM.



BASEBALL MEASUREMENTS



BASEBALL FIELD MEASUREMENTS BY GROUP

GROUP	A	B	C	D	E	F	G	H	I	J	K	L	M	N	O	P	Q
Pro, College, High School	60'-6"	90'	127'-3"	95'	18'	26'	13'	45'	20'	10'	15'	60'	320'-350'	400'+	10'	4'	6'

LEGEND

- | | | |
|--------|---|----|
| ▶ | BACKFLOW PREVENTION DEVICE | 1 |
| ⊗ | MAIN SHUT-OFF VALVE | 1 |
| ● | RAIN BIRD PGA OR PEB REMOTE CONTROL VALVE (SIZED AS SHOWN) | 8 |
| ● | RAIN BIRD 5LRC QUICK COUPLING VALVE | 2 |
| ● | RAIN BIRD FALCON 6504 FC W/12 NOZZLE
PRESSURE = 60 PSI RADIUS = 57 FEET
FLOW = 12.2 GPM | 12 |
| ● | RAIN BIRD FALCON 6504 PC W/12 NOZZLE
PRESSURE = 60 PSI RADIUS = 57 FEET
FLOW = 12.2 GPM | 16 |
| Ⓐ | RAIN BIRD ESP-LX MODULAR OR ESP-MC IRRIGATION CONTROLLER W/12 STATIONS | 1 |
| — | MAINLINE PIPE: CLASS 200 PVC (2-INCH SIZE) | |
| — | LATERAL PIPE: CLASS 200 PVC (SIZED AS SHOWN) | |
| A1 | INDICATES CONTROLLER AND CONTROLLER STATION NUMBER | |
| 49 | INDICATES LATERAL DISCHARGE IN GPM | |
| 1-1/2" | INDICATES REMOTE CONTROL VALVE SIZE | |
| ▨ | INDICATES APPROXIMATE LOCATION OF INFIELD SKIN REMOVAL AND REPLACEMENT WITH TURF/GRASS | |

NOTES

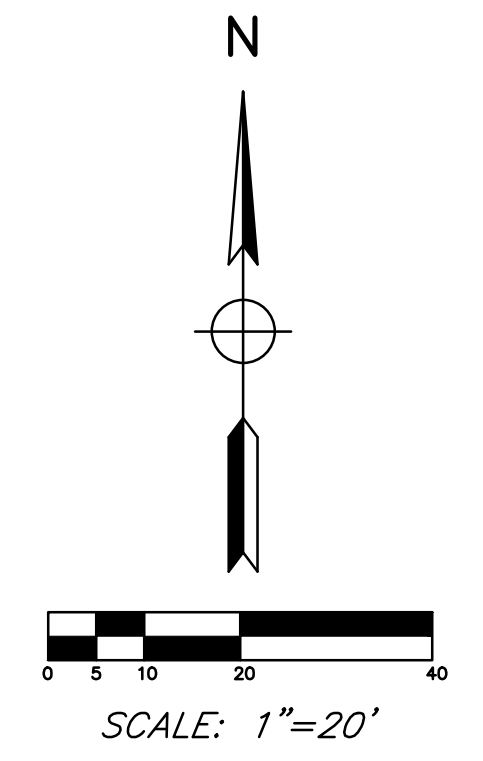
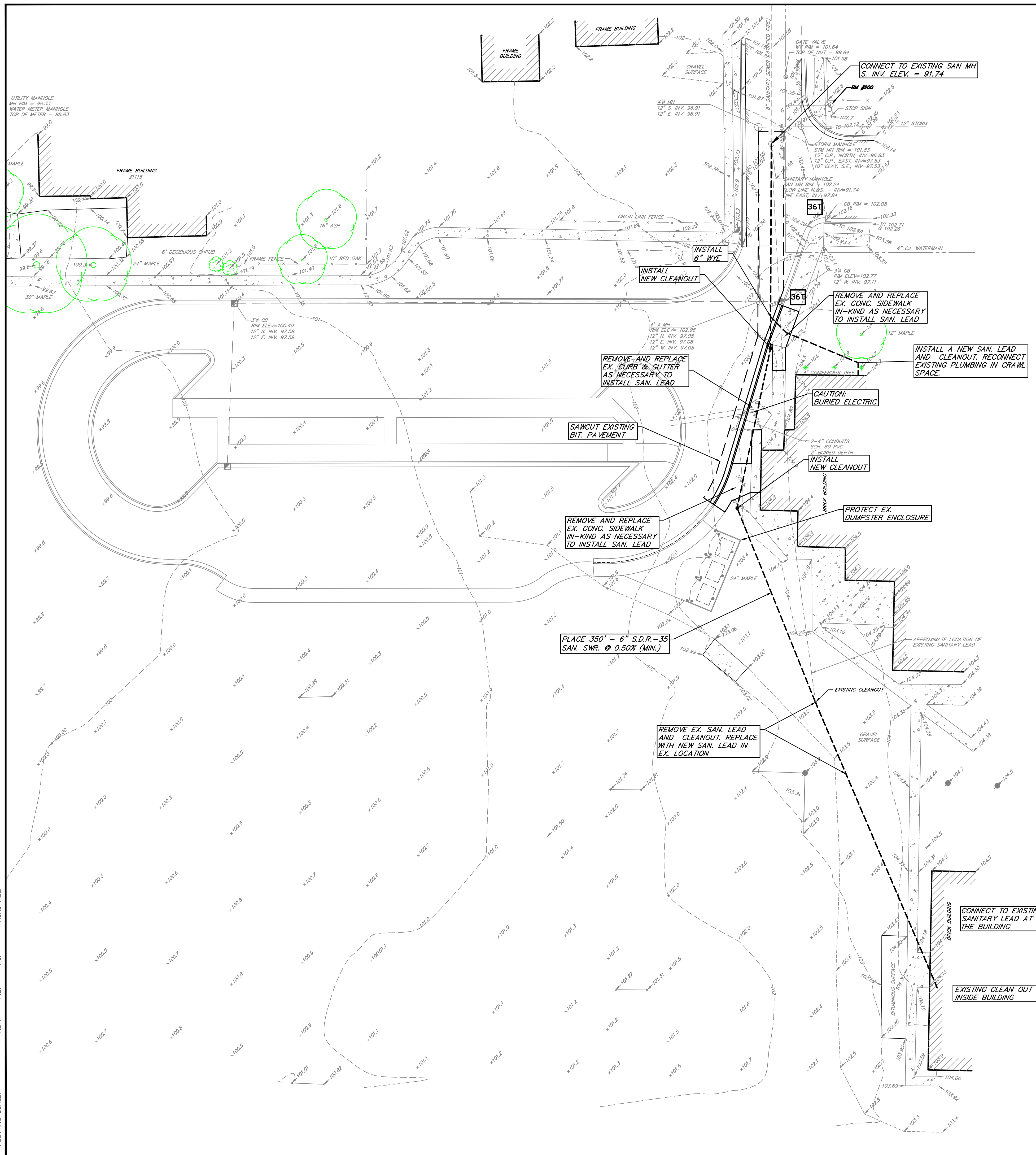
- INSTALL IRRIGATION AND ELECTRICAL SYSTEM AND CONTROLS.
- RECONSTRUCT THE FIELD TO STANDARD MEASUREMENTS AS INDICATED IN THE CHART ABOVE.
- REFURBISH ALL TURF INSIDE THE FENCE.
- THE IRRIGATION LAYOUT SHOWN IS FOR INTENT OF THE PROJECT. IRRIGATION CONTRACTOR SHALL PROVIDE FINAL DESIGN WITH SUBMITTALS BASED ON ACTUAL PRESSURE AND FLOW OF THE WATER SOURCE. DESIGN MUST BE SUBMITTED FOR ENGINEER'S APPROVAL PRIOR TO STARTING CONSTRUCTION.
- POWER TO BE CONNECTED TO THE EXISTING PRESS BOX. CONTROL BOX LOCATION BY OWNER.

GENERAL NOTES

- DESIGN IS BASED UPON A MINIMUM FLOW OF 49 GPM AND A MINIMUM PRESSURE OF 75 PSI DOWNSTREAM OF BACKFLOW PREVENTION DEVICE. IF SUFFICIENT PRESSURE IS NOT AVAILABLE AT POINT-OF-CONNECTION INSTALL A BOOSTER PUMP. CONTACT A RAIN BIRD REPRESENTATIVE FOR THE APPROPRIATE PUMP FOR THE SITE.
- ADDITIONAL LATERALS OUTSIDE PLAY FIELD AREA MAY BE INSTALLED PROVIDED HYDRAULIC CAPABILITY OF SUPPLY IS NOT EXCEEDED.
- SPRINKLER LOCATIONS ARE TO SCALE. PIPE LOCATIONS ARE DIAGRAMMATIC.
- PROVIDE #55K-1 KEY (1" MALE OUTLET) AND SH-2 SWIVEL HOSE ELL FOR EACH QUICK COUPLING VALVE.

BY	MARK	REVISIONS	DATE
OWOSSO PUBLIC SCHOOL DISTRICT OWOSSO, MICHIGAN			
2015 SINKING FUND BASEBALL FIELD IMPROVEMENTS OWOSSO HIGH SCHOOL			
SAGINAW OFFICE 230 S. Washington Ave. Saginaw, MI 48607 Tel. 989-754-4117 Fax. 989-754-4440 www.SpicerGroup.com		PROJECT NO. 121889SG2014	
DE. BY: AJS DR. BY: AJS	CH. BY: MDW APP. BY: DWH	SHEET 3 OF 9	
DATE: MARCH, 2015 SCALE: 1" = 20'	FILE NO. D-5103-03		

PLOTING SCALE: RET. F.B. PC. ACAD FILE:



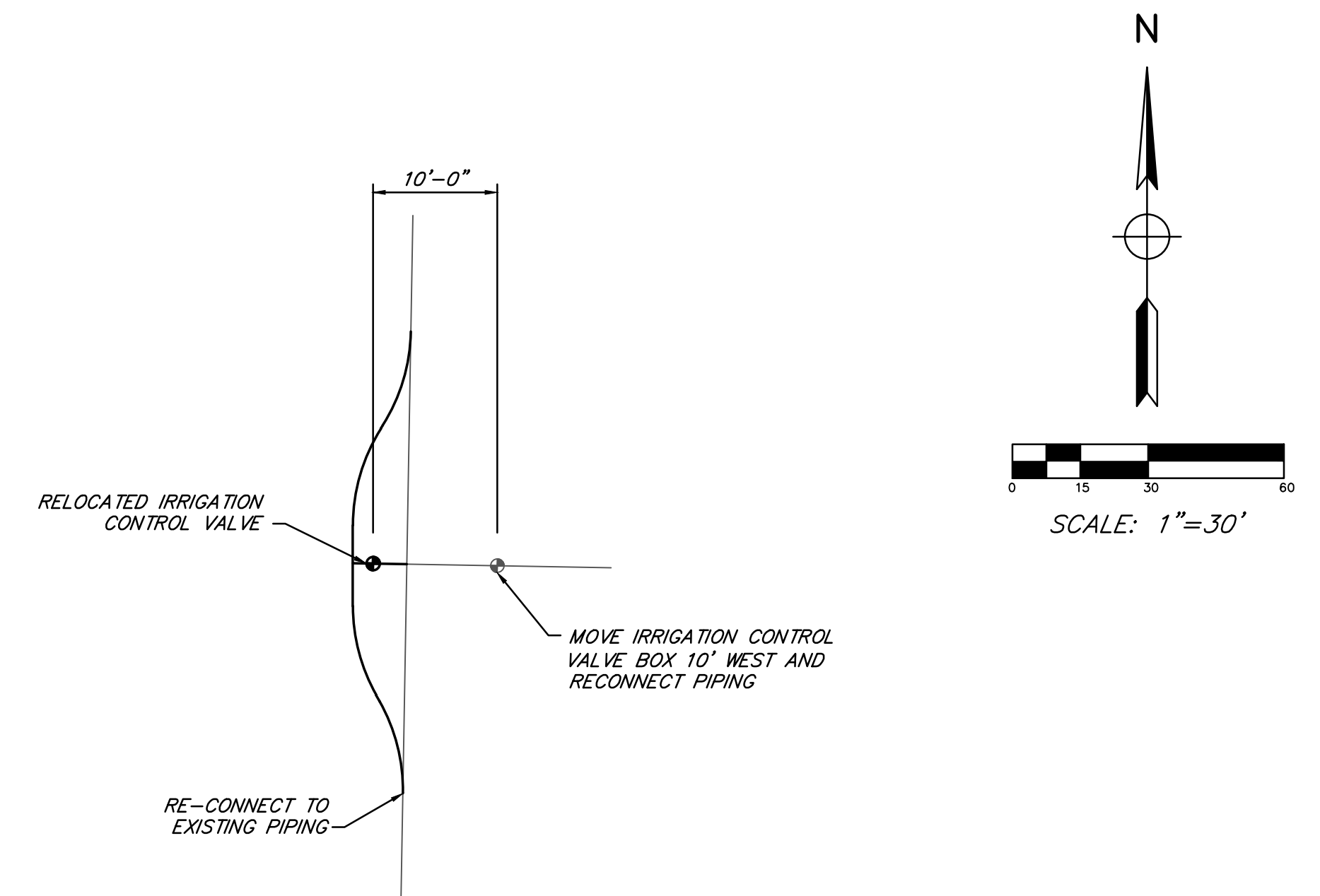
APPROXIMATE QUANTITIES THIS SHEET		
ITEM	UNIT	QTY.
6" SDR-35 SANITARY SEWER, TRENCH DETAIL A	LIN. FT.	350
6" SANITARY CLEANOUT	EACH	2
CURB & GUTTER REPLACEMENT	LIN. FT.	85
BITUMINOUS PAVEMENT REPLACEMENT	TON	20
CONCRETE SIDEWALK REPLACEMENT	SFT.	255
CONNECT TO EXISTING SANITARY MANHOLE	EACH	1

- NOTES**
- CONTRACTOR SHALL FIND EXISTING CLEAN OUT APPROXIMATELY 30' NORTH OF THE UTILITY POLE AND FOLLOW THE EXISTING SANITARY SERVICE LINE SOUTH TO THE BUILDING.
 - CONTRACTOR SHALL VERIFY INVERT ELEVATIONS AT THE EXISTING MANHOLE CONNECTION AND AT THE SCHOOL TO DETERMINE GRADE PRIOR TO INSTALLING THE SANITARY SEWER SERVICE.

BENCHMARK
 BM#200
 ARROW ON DOME OF HYDRANT @ NE CORNER
 S. LYON ST. & HAMPTON ELEV. 105.24

BY	MARK	REVISIONS	DATE
<p>THE WORK REPRESENTED BY THIS DRAWING WAS DESIGNED BY THE ENGINEER FOR THIS SPECIFIC APPLICATION AND SPECIFIC LOCATION DESCRIBED HEREIN IN ACCORDANCE WITH THE CONDITIONS PREVALENT AT THE TIME THE DESIGN WAS DONE. THE ENGINEER DOES NOT GUARANTEE AND WILL NOT BE LIABLE FOR ANY OTHER LOCATION, CONDITION, DESIGN OR PURPOSE.</p>			
<p>OWOSSO PUBLIC SCHOOL DISTRICT OWOSSO, MICHIGAN</p>			
<p>2015 SINKING FUND SANITARY LEAD REPLACEMENT BRYANT ELEMENTARY SCHOOL</p>			
		<p>SAGINAW OFFICE 230 S. Washington Ave. Saginaw, MI 48607 Tel. 989-754-4717 Fax. 989-754-4440 www.SpicerGroup.com</p>	
DE. BY: AJS	CH. BY: MDW	PROJECT NO. 121889SG2014	
DR. BY: AJS	APP. BY: DWH		
STDS.	SHEET 4 OF 9	FILE NO. D-5103-04	
DATE MARCH, 2015	SCALE 1" = 20'		

PLOTTING SCALE: RET. F.B. PG. ACAD FILE:



VALVE RELOCATION DETAIL
NOT TO SCALE

SAND CAP BUILD UP SYSTEM

1. CONTRACTOR SHALL BUILD UP THE EXISTING TURF AND CORRECT ANY LOW (WET) SPOTS IN THE EXISTING SLOPE BY LEVELING WITH TOPSOIL. PREPARE THE EXISTING SURFACE TO A SLOPE OF 1.25%. ADD SEED AND FERTILIZER TO ALLOW TURF TO BE RE-ESTABLISHED. TRAFFIC ON THE FIELD SHALL BE RESTRICTED OVER THE COURSE OF THIS PROCESS.
2. ONCE THE TURF HAS BEEN RE-ESTABLISHED, BEGIN A SAND-BASED TOP DRESSING PROGRAM USING A WELL GRADED 90% SAND - 10% SILT & CLAY ROOT ZONE MATERIAL. ADD THE SAND-BASED TOP DRESSING TO THE FIELD IN 1/4" LAYERS. UP TO 1" CAN BE ADDED OVER A TEN (10) WEEK PERIOD.
4. REGULARLY CLEAN AND MAINTAIN IRRIGATION HEADS TO PREVENT SAND FROM DAMAGING THE SYSTEM.
5. CONTRACTOR SHALL RE-SEED AS NEEDED, MANAGE, AND MAINTAIN THE FIELD TURF THROUGHOUT THE PROJECT TO ENSURE GROWTH.
6. THE FINAL 1/4" LAYER OF TOP DRESSING SHALL BE COMPLETED BY AUGUST 1, 2015.
7. A SECOND 1 INCH LAYER OF TOP DRESSING SHALL BE APPLIED IN THE SUMMER OF 2016. TOP DRESSING PLACEMENT SHALL BEGIN THE WEEK OF MAY 23, 2016 TO ALLOW THE 10 WEEK PROCESS TO BE COMPLETE BY AUGUST 1, 2016.

BENCHMARK

BM - ARROW ON HYDRANT, NE CORNER OF GROVER AND DEWEY. ELEV. = 730.71

NOTES

1. POWER SHALL BE ROUTED FROM THE SCORE BOARD LIGHT DISCONNECT TO THE PROPOSED LIGHT POLE.
2. SEE EXHIBIT "A" IN CONTRACT DOCUMENTS FOR PORTABLE BLEACHER IMPROVEMENTS, SCOPE FOR BLEACHER SECTIONS 1 - 6.

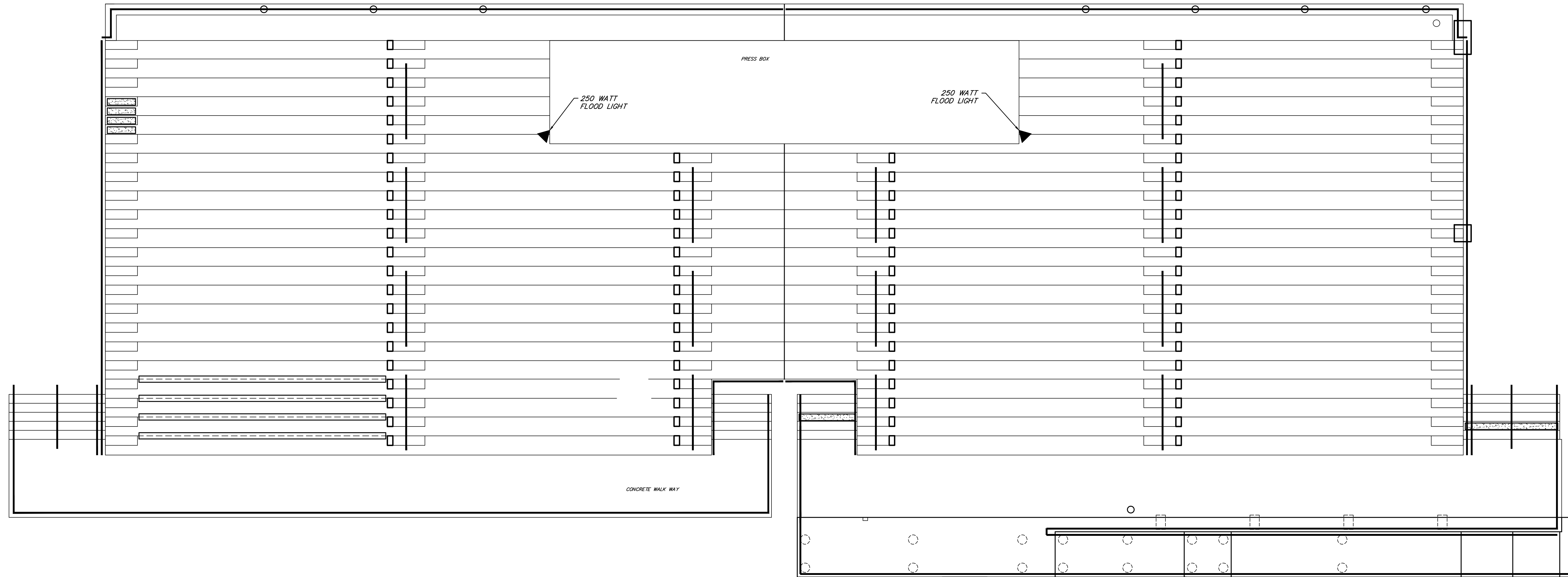
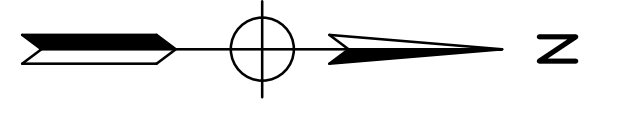
ATHLETIC FIELD SOIL SIEVE ANALYSIS
For: Topdressing & Construction - 90% Sand : 10% Silt and Clay

Sand Portion Specification			#28 Sand Sports Field Topdressing & Construction	Root Zone Sports Field Topdressing & Construction
Size (mm)	Sieve	% Retained		
Very Coarse	1.0 - 2.0	#18 5 - 20	15.0	16.9
Coarse	.50 - 1.0	#35 20 - 35	32.0	24.7
Medium	.25 - .50	#60 30 - 40	41.0	31.2
Fine	.10 - .25	#100 05 - 25	11.0	13.2
Very Fine	.05 - .10	#270 < 5	0.8	4.0
Silt & Clay		----	0.2	10.0

Root Zone
Soil should be screened to 1/4" prior to blending with sand component.

BY	MARK	REVISIONS	DATE
<p>OWOSSO PUBLIC SCHOOL DISTRICT OWOSSO, MICHIGAN</p> <p>2015 SINKING FUND DRAINAGE IMPROVEMENTS WILLMAN FIELD</p>			
		<p>SAGINAW OFFICE 230 S. Washington Ave. Saginaw, MI 48607 Tel. 989-754-4717 Fax. 989-754-4440 www.SpicerGroup.com</p>	
DE. BY: AJS	CH. BY: MDW	PROJECT NO. 121889SG2014	
DR. BY: AJS	APP. BY: DWH		
STDS.	SHEET 5 OF 9		
DATE MARCH, 2015	FILE NO. D-5103-05		
SCALE 1" = 30'			

ACAD FILE: PLOT SCALE: RET. F.B. P.C.




EXISTING STADIUM – PLAN VIEW

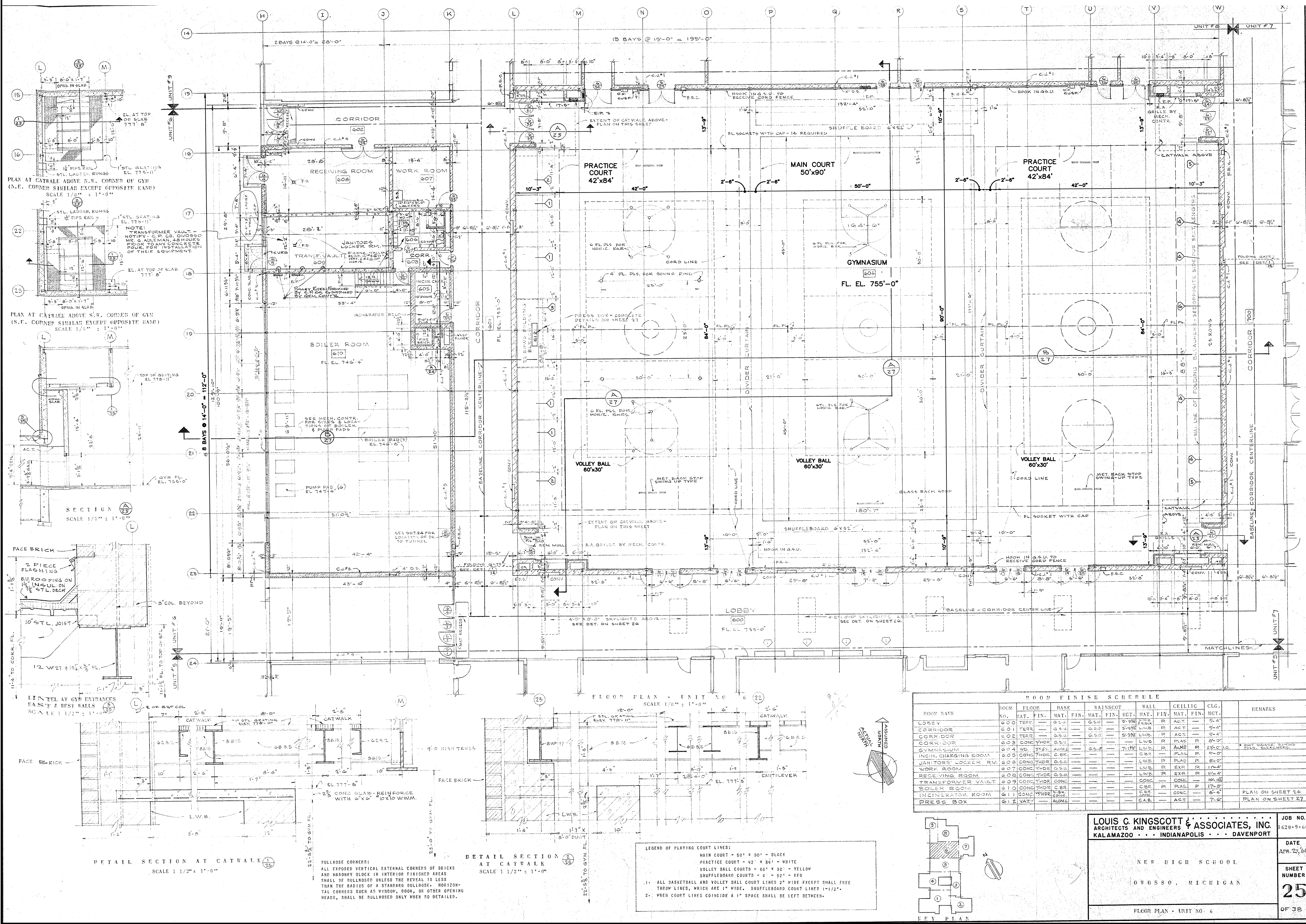
SCALE: 3/16"=1'-0"

NOTES

1. CONTRACTOR SHALL PLACE TWO FLOOD LIGHTS ON THE PRESS BOX AS SHOWN. PROVIDE AN INTERIOR SWITCH AND CONNECT TO EXISTING POWER WITHIN.
2. CONTRACTOR SHALL APPLY AN ANTI-RUST COATING OVER THE ENTIRE TOP SURFACE OF THE GRAND STANDS. COLOR TO BE SELECTED BY OWNER. PRODUCT SHALL BE SIKA. SURFACE SHALL BE PREPPED PER MANUFACTURER'S INSTRUCTIONS PRIOR TO APPLICATION.

BY	MARK	REVISIONS	DATE
<small>THE WORK REPRESENTED BY THIS DRAWING WAS DESIGNED BY THE ENGINEER FOR THIS SPECIFIC APPLICATION AND SPECIFIC LOCATION DESCRIBED HEREIN IN ACCORDANCE WITH THE CONDITIONS PREVALENT AT THE TIME THE DESIGN WAS DONE. THE ENGINEER DOES NOT GUARANTEE AND WILL NOT BE LIABLE FOR ANY OTHER LOCATION, CONDITION, DESIGN OR PURPOSE.</small>			
OWOSSO PUBLIC SCHOOL DISTRICT OWOSSO, MICHIGAN			
2015 SINKING FUND BLEACHER LIGHTING WILLMAN FIELD			
		<small>SAGINAW OFFICE 230 S. Washington Ave. Saginaw, MI 48607 Tel. 989-754-4717 Fax. 989-754-4440 www.SpicerGroup.com</small>	
DE. BY: <i>AJS</i>	CH. BY: <i>MDN</i>	PROJECT NO. 121889SG2014	
DR. BY: <i>AJS</i>	APP. BY: <i>DWH</i>	SHEET 6 OF 9	
DATE MARCH, 2015	SCALE AS SHOWN	FILE NO. D-5103-06	

PLOTTING SCALE: RET. F.B. PG. ACAD FILE:



- NOTES**
- REFINISH GYM FLOOR.
 - ALL EXISTING LINES TO BE REPLACED AS IS.
 - LOGO AT CENTER COURT SHALL BE REPLACED WITH A NEW BLOCK "O" AS SHOWN IN THE CONTRACT DOCUMENTS.
 - THE NAME "TROJANS" ALONG THE SIDELINE (TWO LOCATIONS) SHALL BE REPLACED WITH AN UPDATED FONT, TO BE APPROVED BY OWNER.
 - THE TWO TROJAN LOGOS SHALL BE REPLACED WITH AN UPDATED VERSION AS SHOWN IN THE CONTRACT DOCUMENTS.
 - CREATE A STAINED "WATERMARK" TROJAN LOGO INSIDE THE 3 POINT LINE ON BOTH ENDS OF THE COURT, SEE CONTRACT DOCUMENTS.
 - REPAINT ALL WALLS IN THE GYM.

ROOM FINISH SCHEDULE

ROOM NAME	NO.	FLOOR	BASE	WAINSCOT	WALL	CELLING	CLG.	REMARKS
LOBBY	600	TER.	G.S.U.	G.S.U.	5-9/8 LWB	R	ACT.	5-4
CORRIDOR	601	TER.	G.S.U.	G.S.U.	5-9/8 LWB	R	ACT.	5-4
CORRIDOR	602	TER.	G.S.U.	G.S.U.	5-9/8 LWB	R	ACT.	5-4
CORRIDOR	603	CONC.	THDR.	G.S.U.	5-9/8 LWB	R	ACT.	5-4
GYMNASIUM	604	CONC.	THDR.	G.S.U.	5-9/8 LWB	R	ACT.	5-4
RECEIVING ROOM	605	CONC.	THDR.	G.S.U.	5-9/8 LWB	R	ACT.	5-4
WORK ROOM	607	CONC.	THDR.	G.S.U.	5-9/8 LWB	R	ACT.	5-4
JANITORS' LOCKER RM.	608	CONC.	THDR.	G.S.U.	5-9/8 LWB	R	ACT.	5-4
RECEIVING ROOM	609	CONC.	THDR.	G.S.U.	5-9/8 LWB	R	ACT.	5-4
BOILER ROOM	610	CONC.	THDR.	G.S.U.	5-9/8 LWB	R	ACT.	5-4
INCINERATOR ROOM	611	CONC.	THDR.	G.S.U.	5-9/8 LWB	R	ACT.	5-4
PRESS BOX	612	VAT.	AUMI.	G.S.U.	5-9/8 LWB	R	ACT.	5-4

BY	MARK	REVISIONS	DATE

OWOSSO PUBLIC SCHOOL DISTRICT
OWOSSO, MICHIGAN

**2015 SINKING FUND
GYM FLOOR IMPROVEMENTS
OWOSSO HIGH SCHOOL**

LOUIS C. KINGSCOTT & ASSOCIATES, INC.
ARCHITECTS AND ENGINEERS
KALAMAZOO • INDIANAPOLIS • DAVENPORT

NEW HIGH SCHOOL
OWOSSO, MICHIGAN

FLOOR PLAN - UNIT 6

JOB NO. 1620-99-66
DATE APR. 23, 2015
SHEET NUMBER 25 OF 38

Spicer group

SAGINAW OFFICE
230 S. Washington Ave.
Saginaw, MI 48607
Tel. 989-754-4717
Fax. 989-754-4440
www.SpicerGroup.com

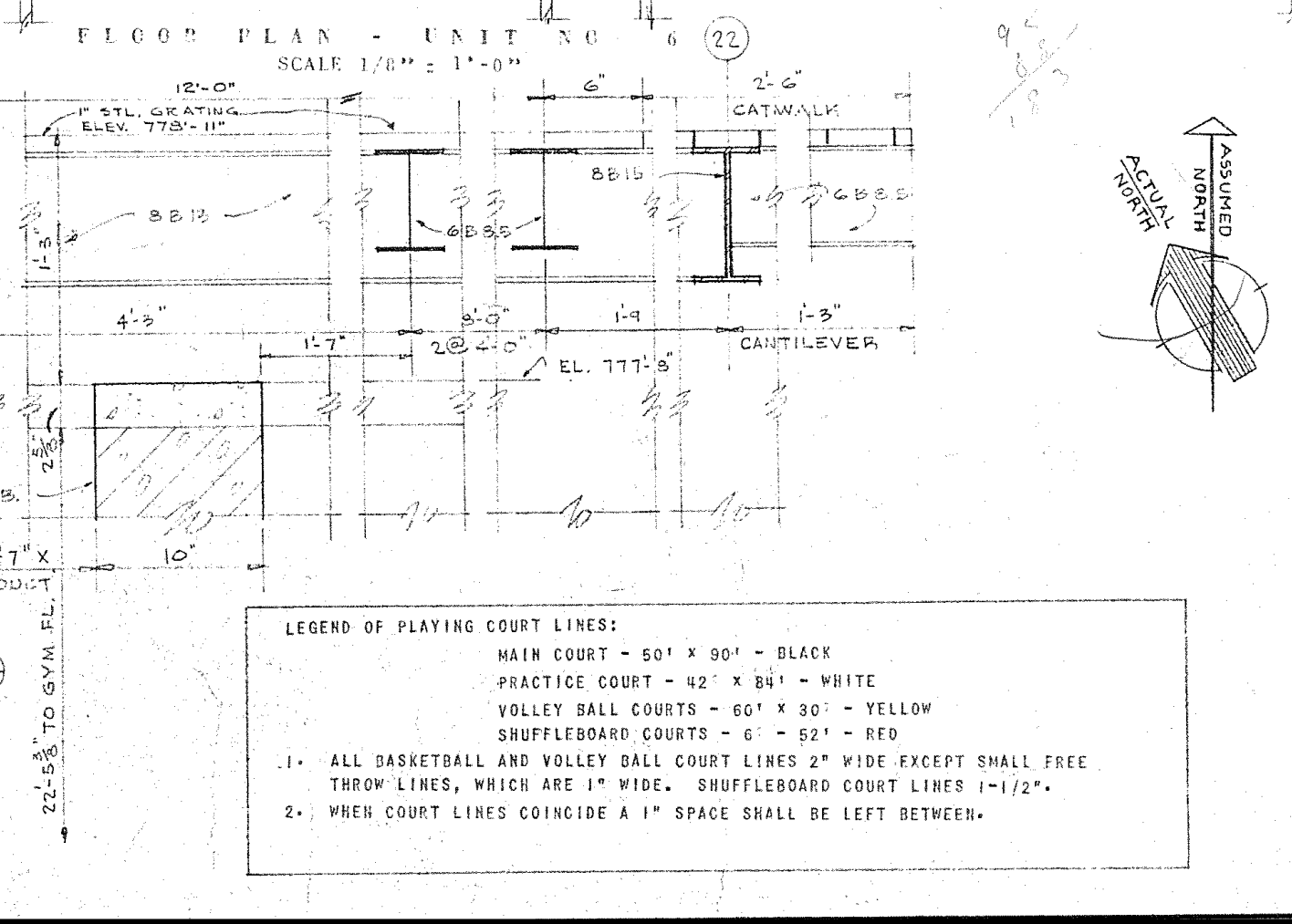
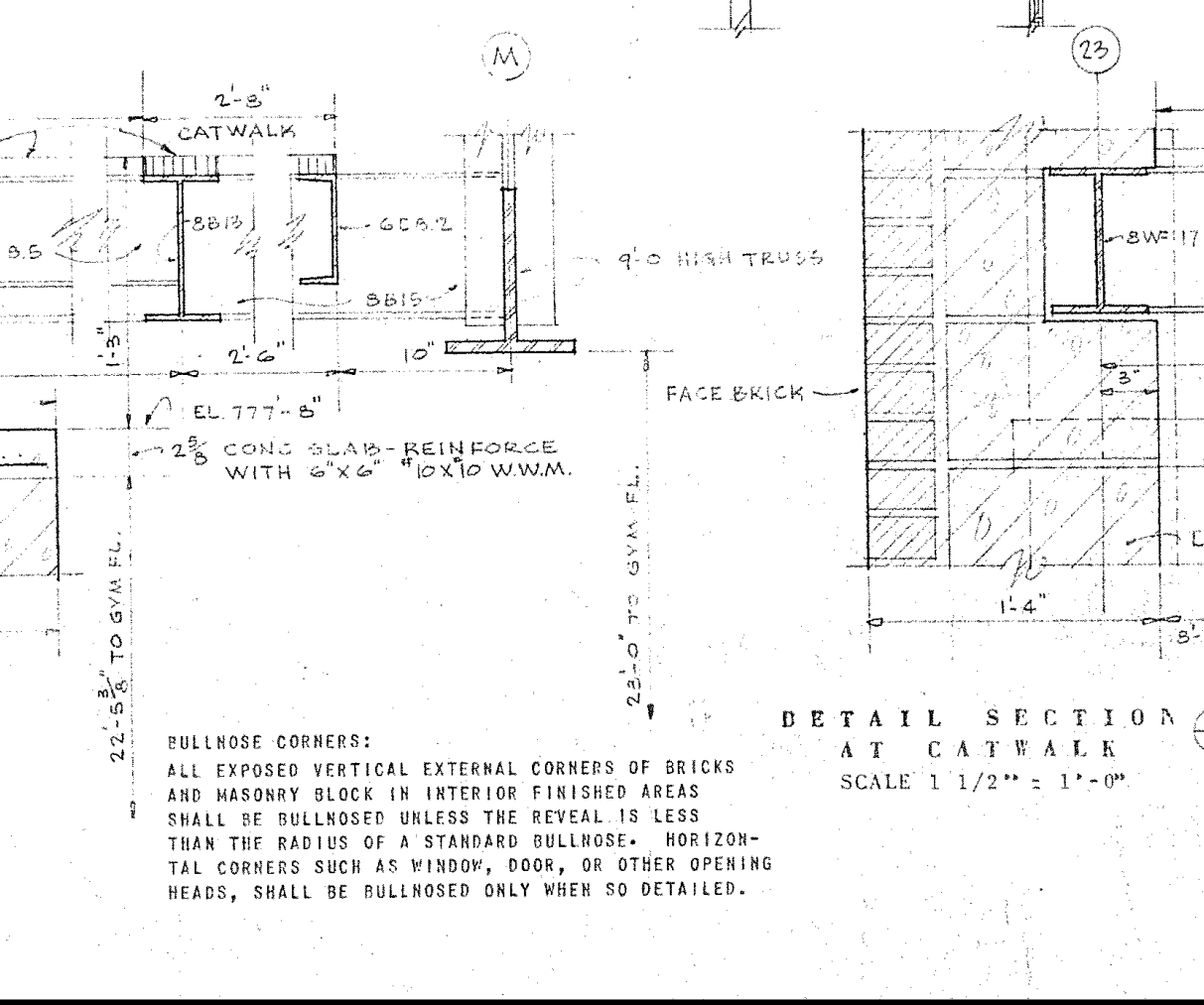
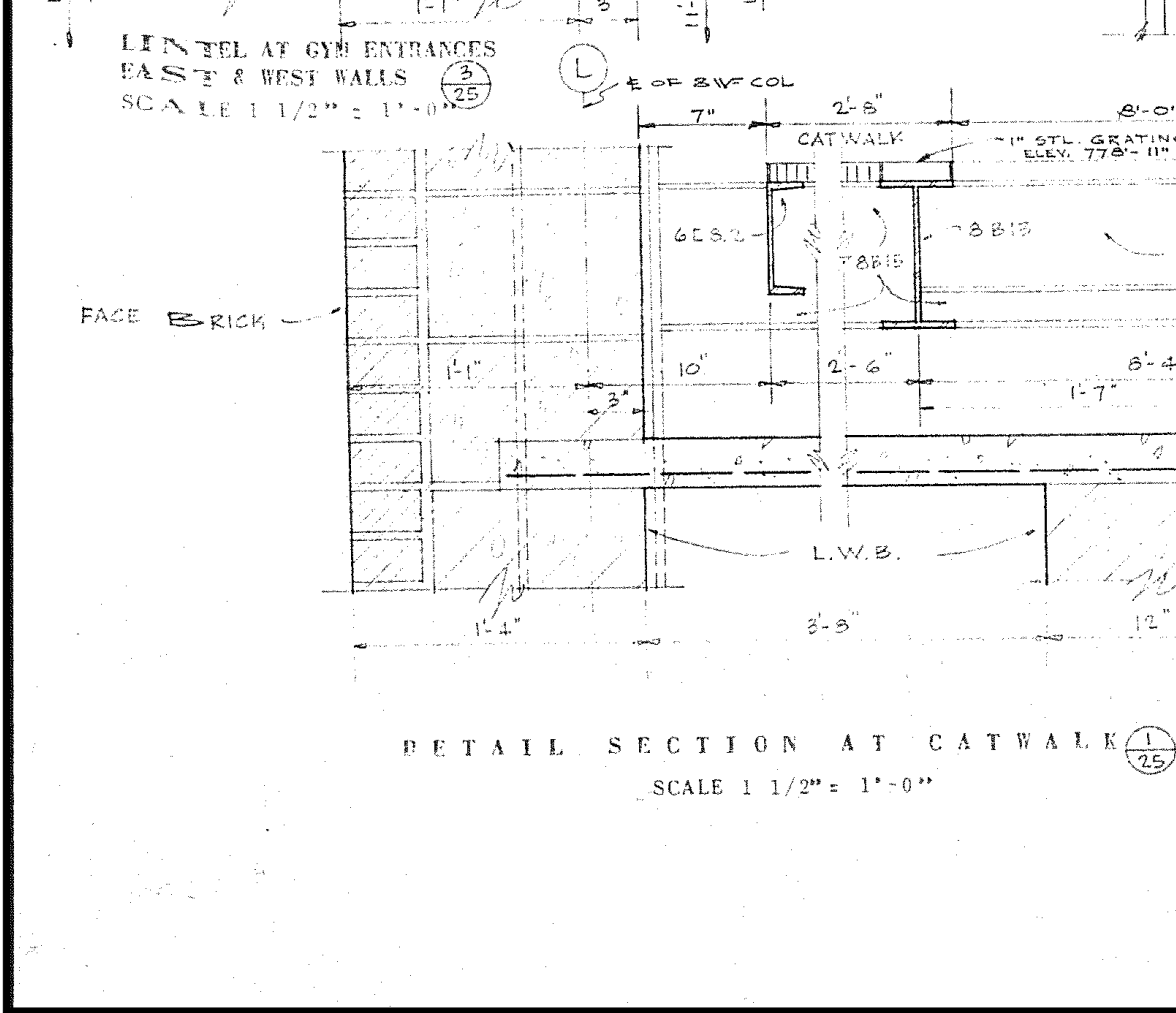
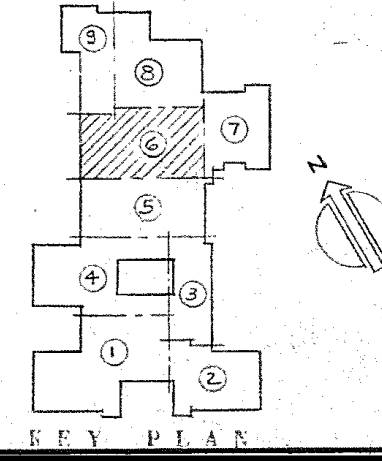
PROJECT NO. 121889SG2014

DE. BY: AJS CH. BY: MDN
DR. BY: AJS APP. BY: DMH

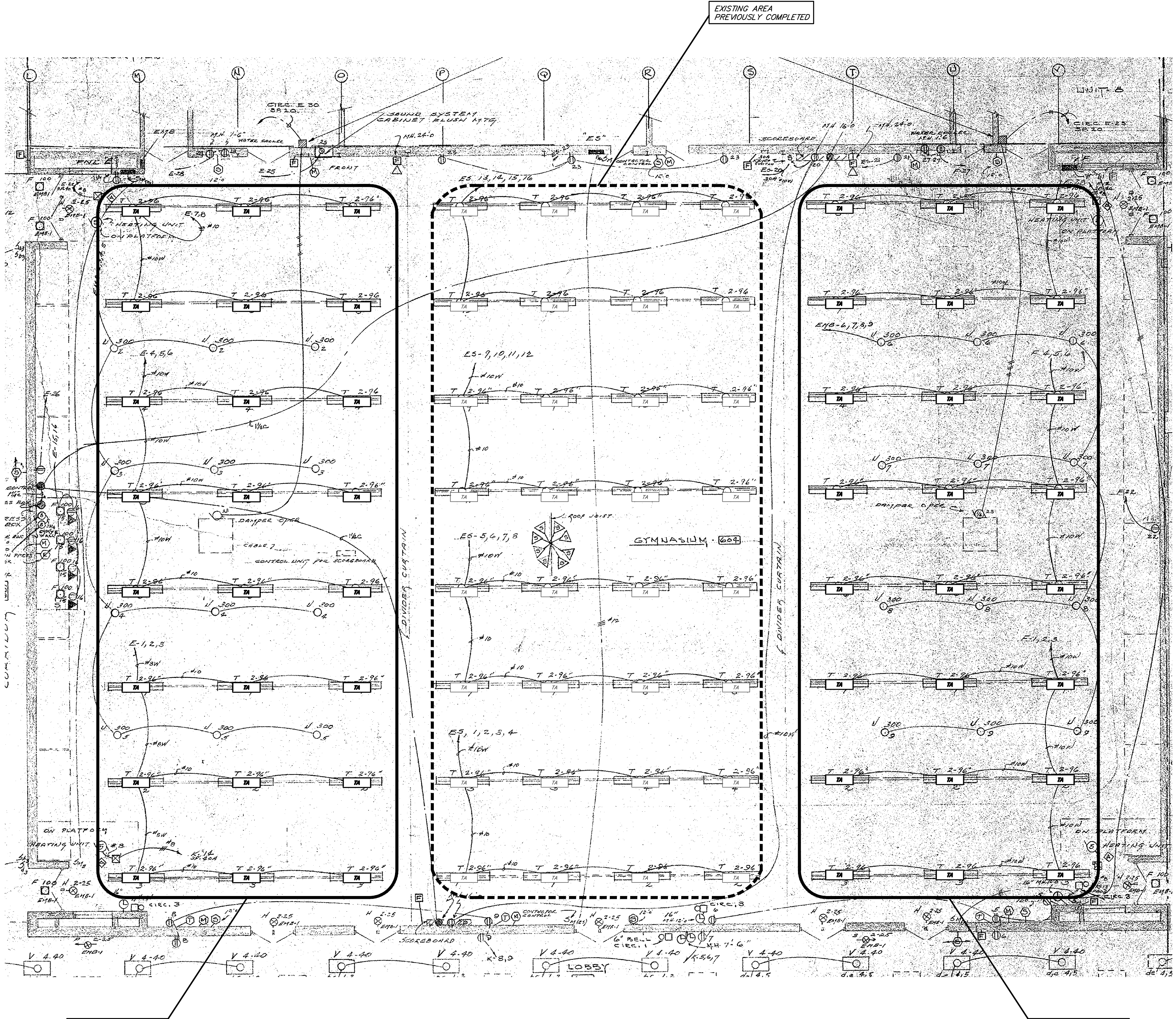
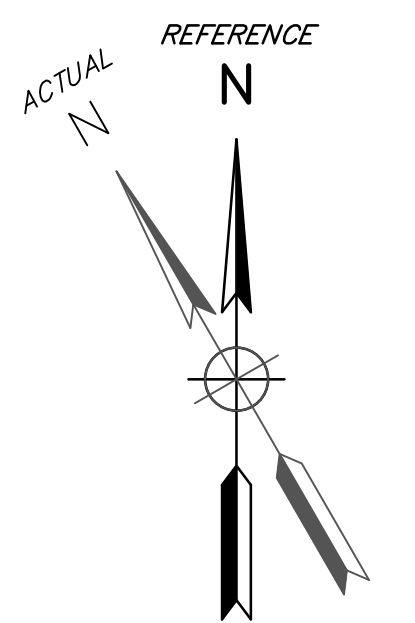
STDS. SHEET 7 OF 9
DATE MARCH, 2015 FILE NO. D-5103-07
SCALE AS SHOWN

LEGEND OF PLAYING COURT LINES:
MAIN COURT - 50' x 90' - BLACK
PRACTICE COURT - 42' x 84' - WHITE
VOLLEY BALL COURTS - 60' x 30' - YELLOW
SHUFFLEBOARD COURTS - 5' x 21' - RED

- ALL BASKETBALL AND VOLLEY BALL COURT LINES 2" WIDE EXCEPT SMALL FREE THROW LINES, WHICH ARE 1" WIDE. SHUFFLEBOARD COURT LINES 1-1/2".
- WHEN COURT LINES COINCIDE A 1" SPACE SHALL BE LEFT BETWEEN.



PLOTTING SCALE: RET. PG. ACAD FILE



PROPOSED EQUIPMENT

TAG DESCRIPTION	QTY
TA MANUF: HOWARD LIGHTING PRODUCTS	32 EXISTING
MODEL: HFA3-E-5-54-H-HE-M1-000-01-0-1	48 PROPOSED
HIGH BAY, PENDANT MOUNT, T5 FLUORESCENT FIXTURE.	
4 FOOT, 6 LAMP, T5, 54W, 85 CRI, 4100K	

- NOTES***
- CONTRACTOR SHALL REPLACE EACH EXISTING "T 2-96" FIXTURE WITH ONE (1) "TA" FIXTURE WHERE INDICATED.
 - CONTRACTOR SHALL REUSE EXISTING POWER WIRING AT EACH LOCATION.
 - CONTRACTOR SHALL VERIFY MINIMUM WIRE SIZES ARE MET AND PROPER GROUNDING PRACTICES ARE USED.
 - CONTRACTOR TO VERIFY FIELD LOCATIONS AND QUANTITIES BEFORE STARTING WORK.
 - PROPOSED LUMINAIRES TO BE MOUNTED, AIMED, AND ADJUSTED TO MATCH EXISTING "TA" LUMINAIRES' INSTALLATION.
 - CONTRACTOR TO COORDINATE WORK WITH ALL TRADES TO AVOID INTERFERENCE WITH OTHER WORK.
 - LIGHTING AND ASSOCIATED ELECTRICAL WORK TO BE COMPLETED PRIOR TO BEGINNING WORK ON FLOORS.
- * LIGHTING WORK TO BE COMPLETED BEFORE FLOOR IS REFURBISHED.

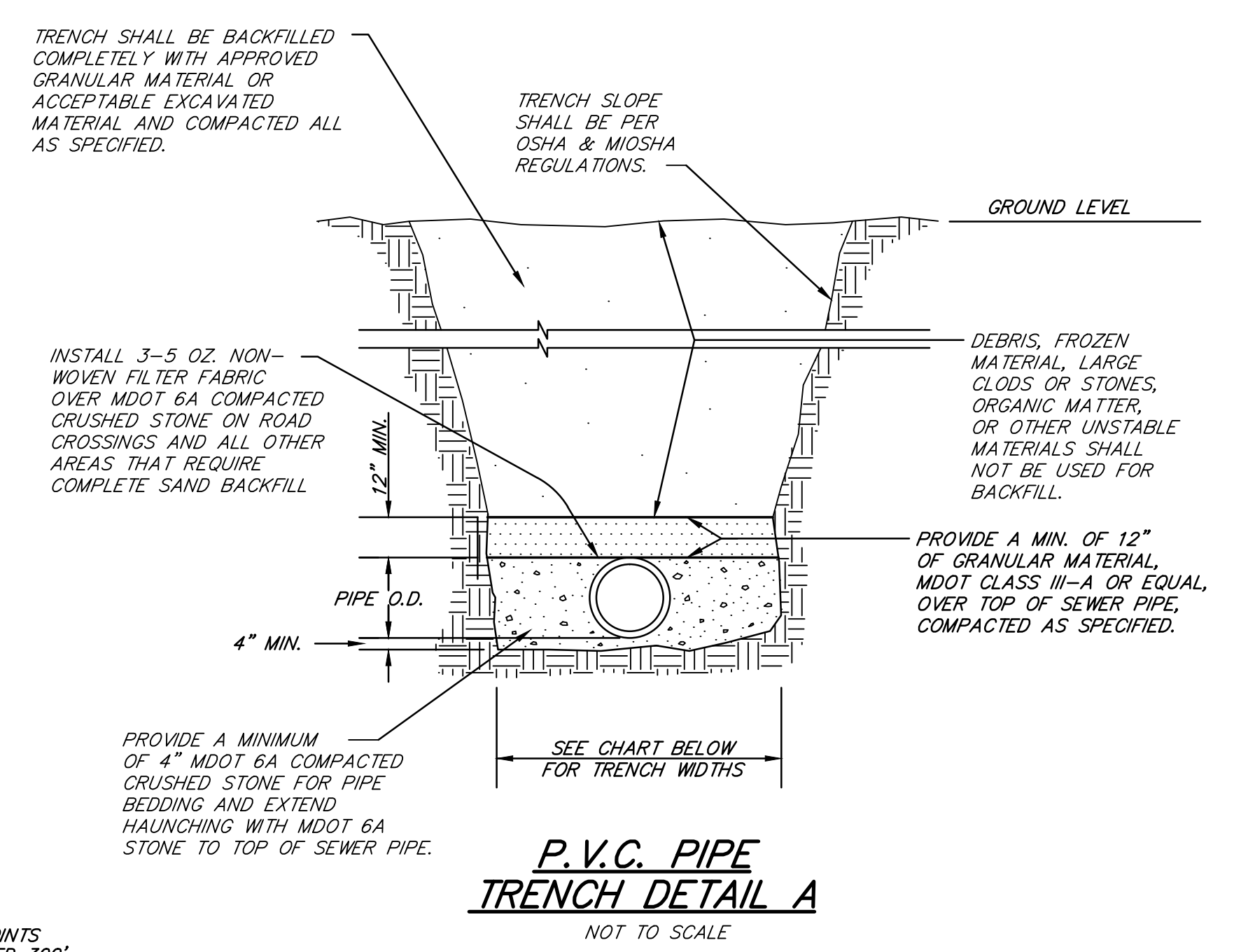
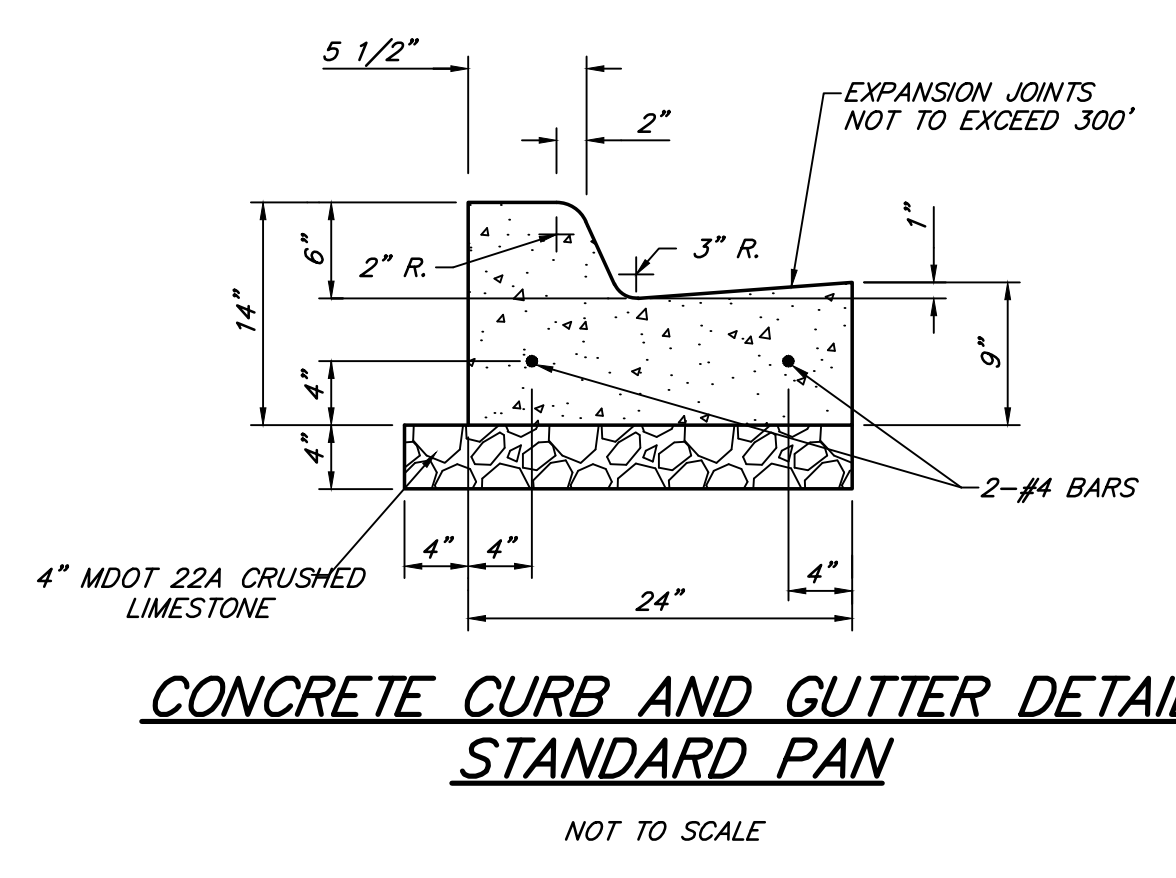
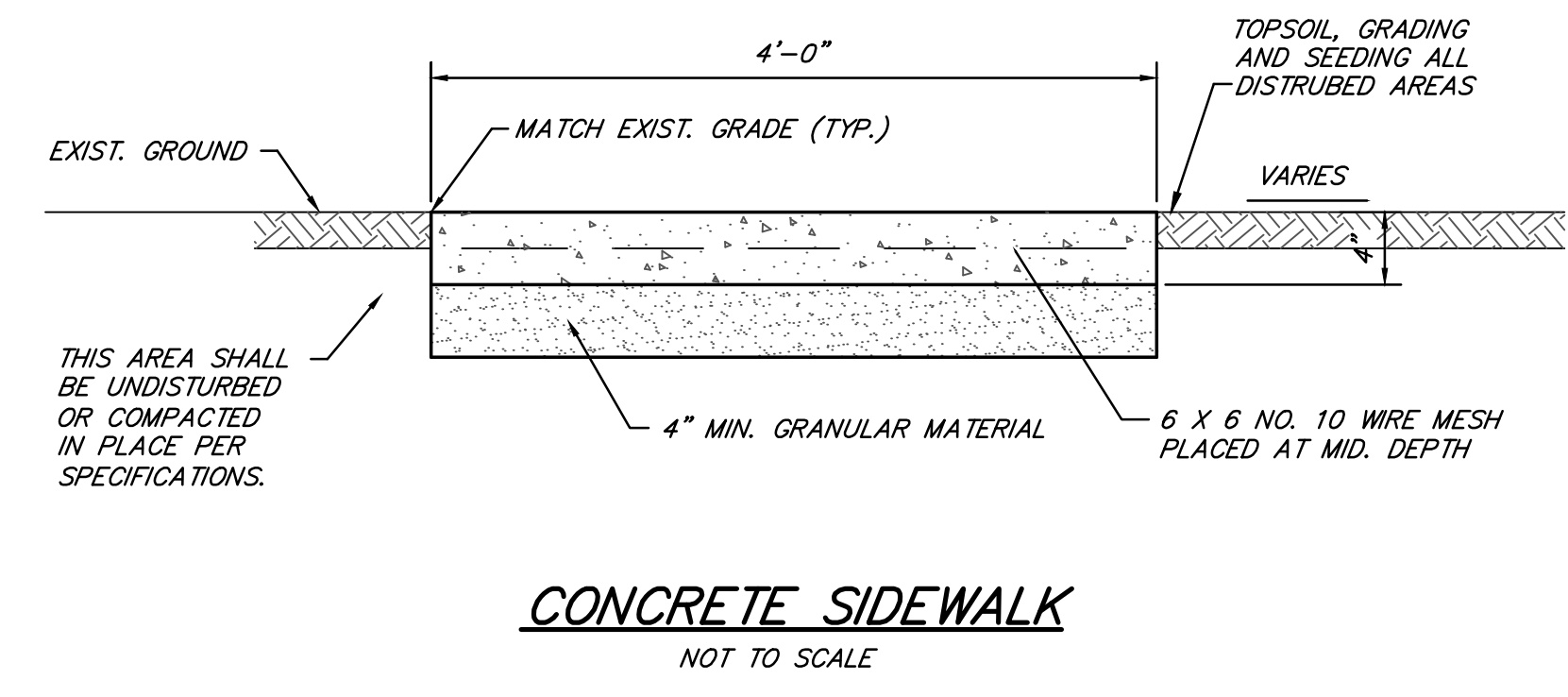
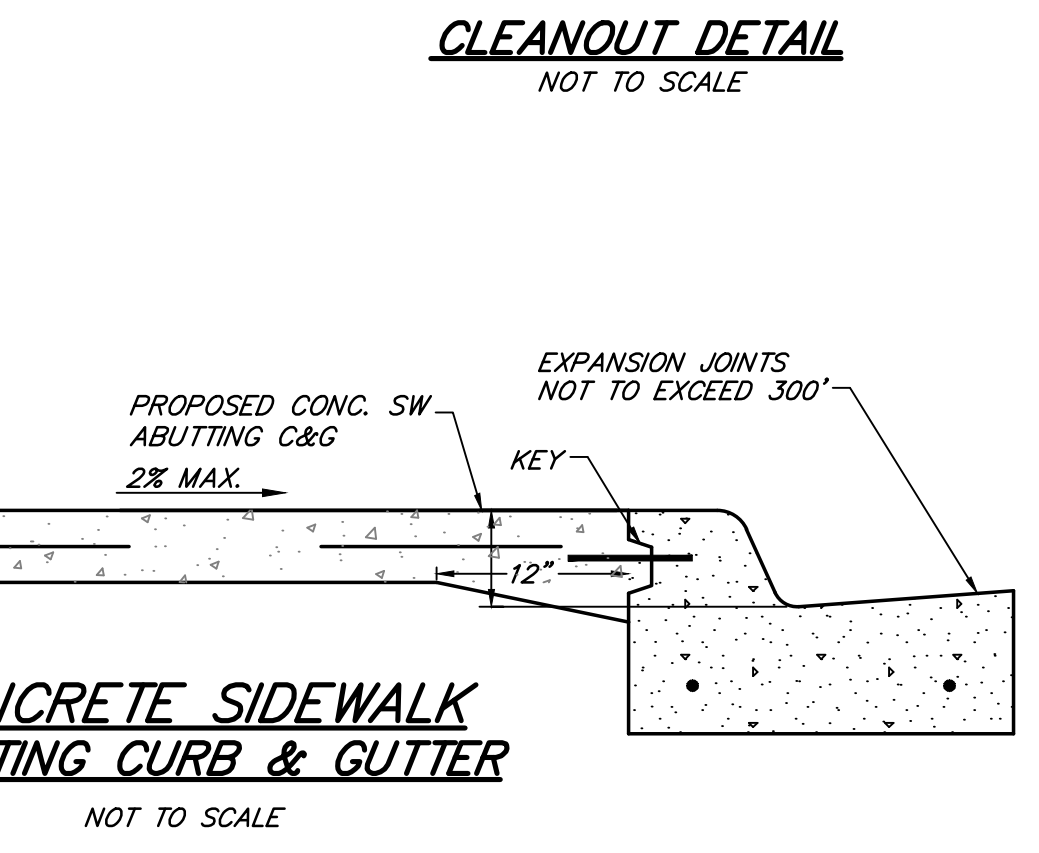
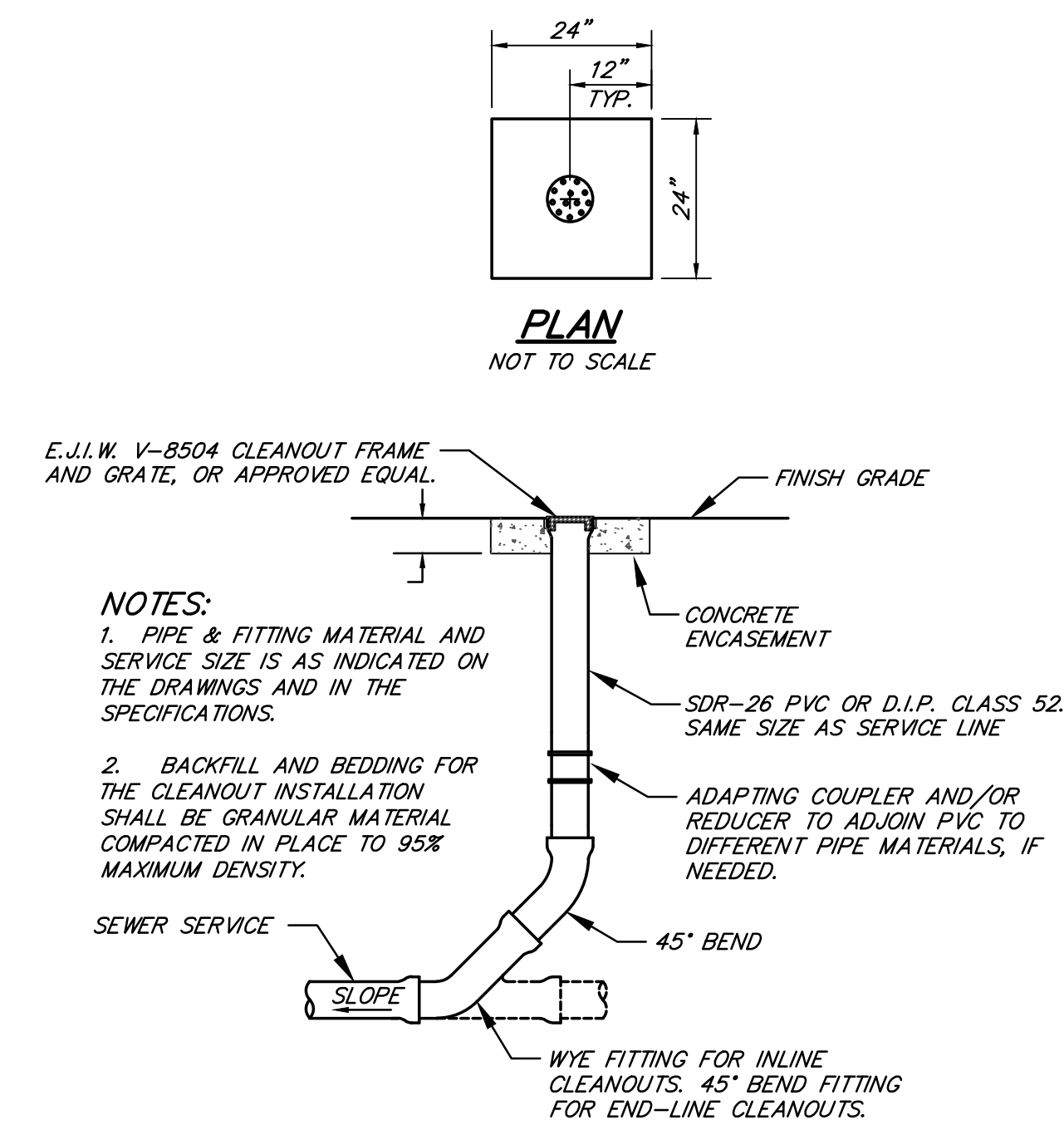
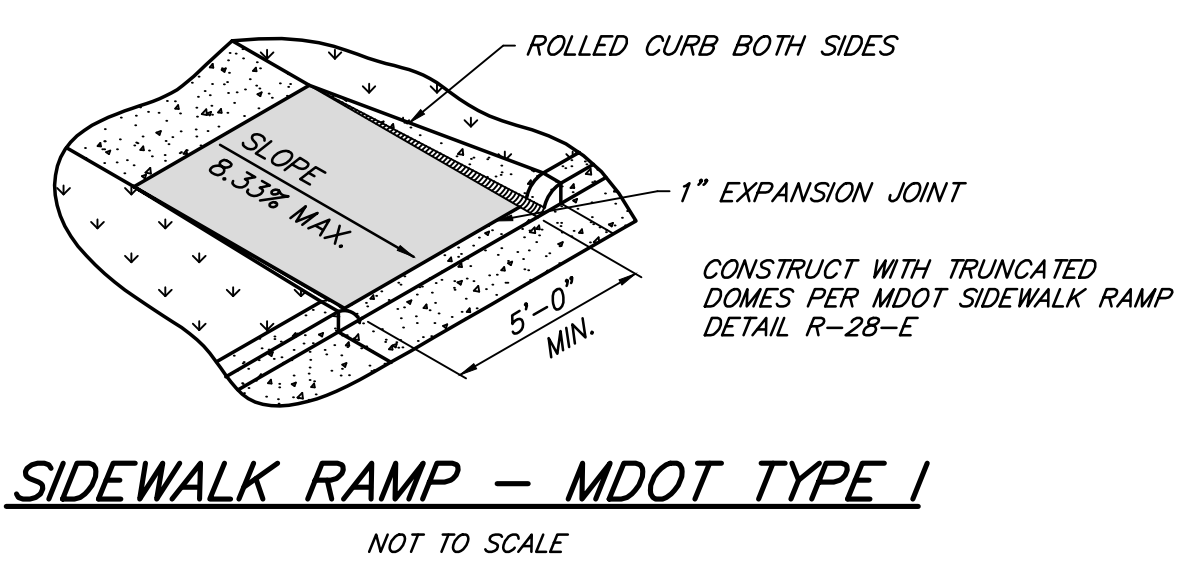
KEY

	EXISTING LIGHT FIXTURE TO BE MATCHED
	PROPOSED LIGHT FIXTURE TO MATCH EXISTING "TA"

HIGH SCHOOL GYM ELECTRICAL PLAN
SCALE: 1/8" = 1'-0"

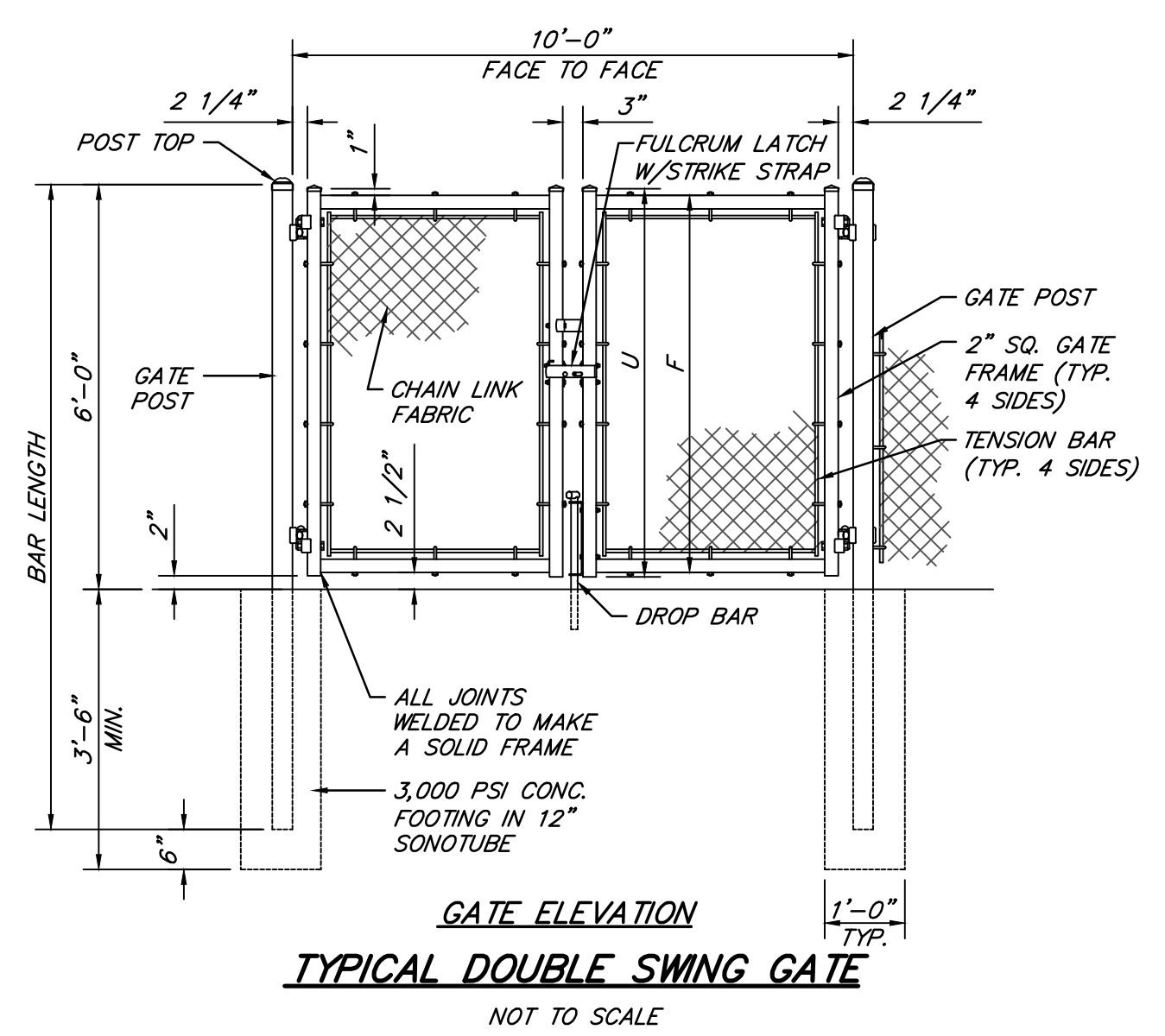
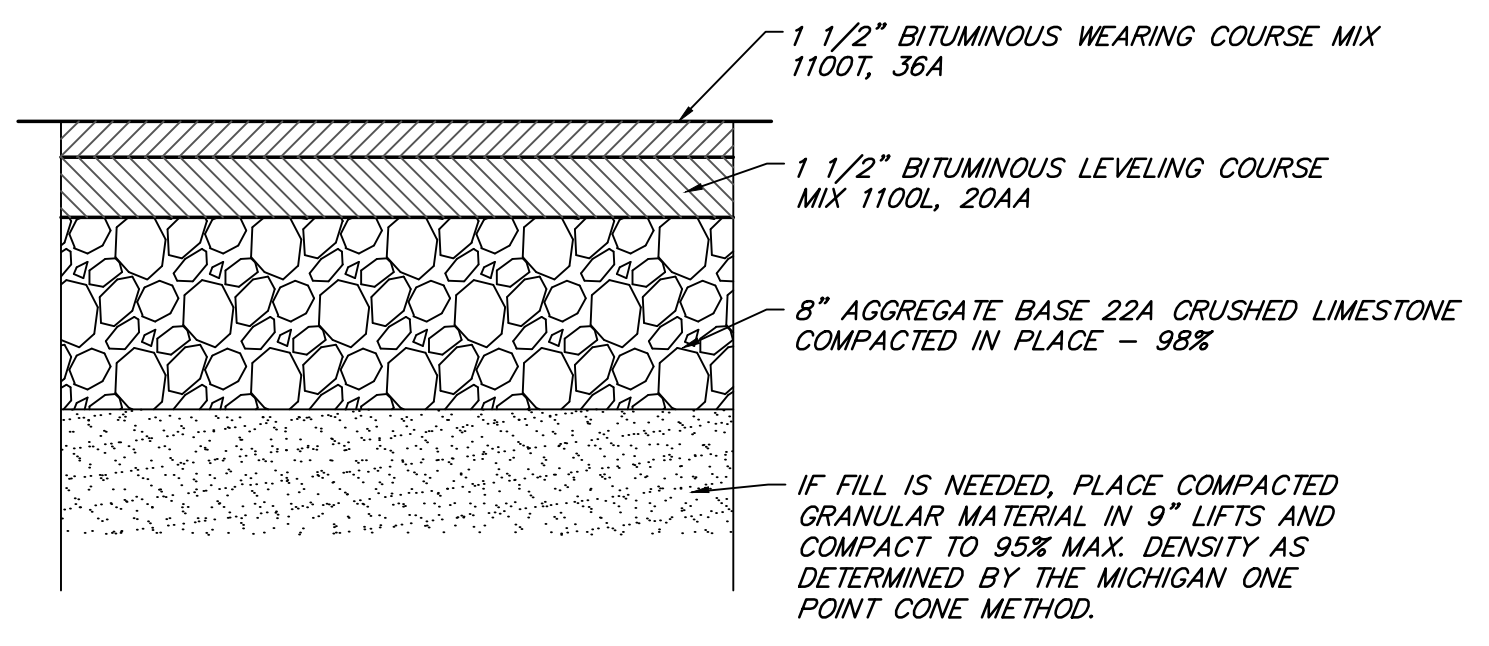
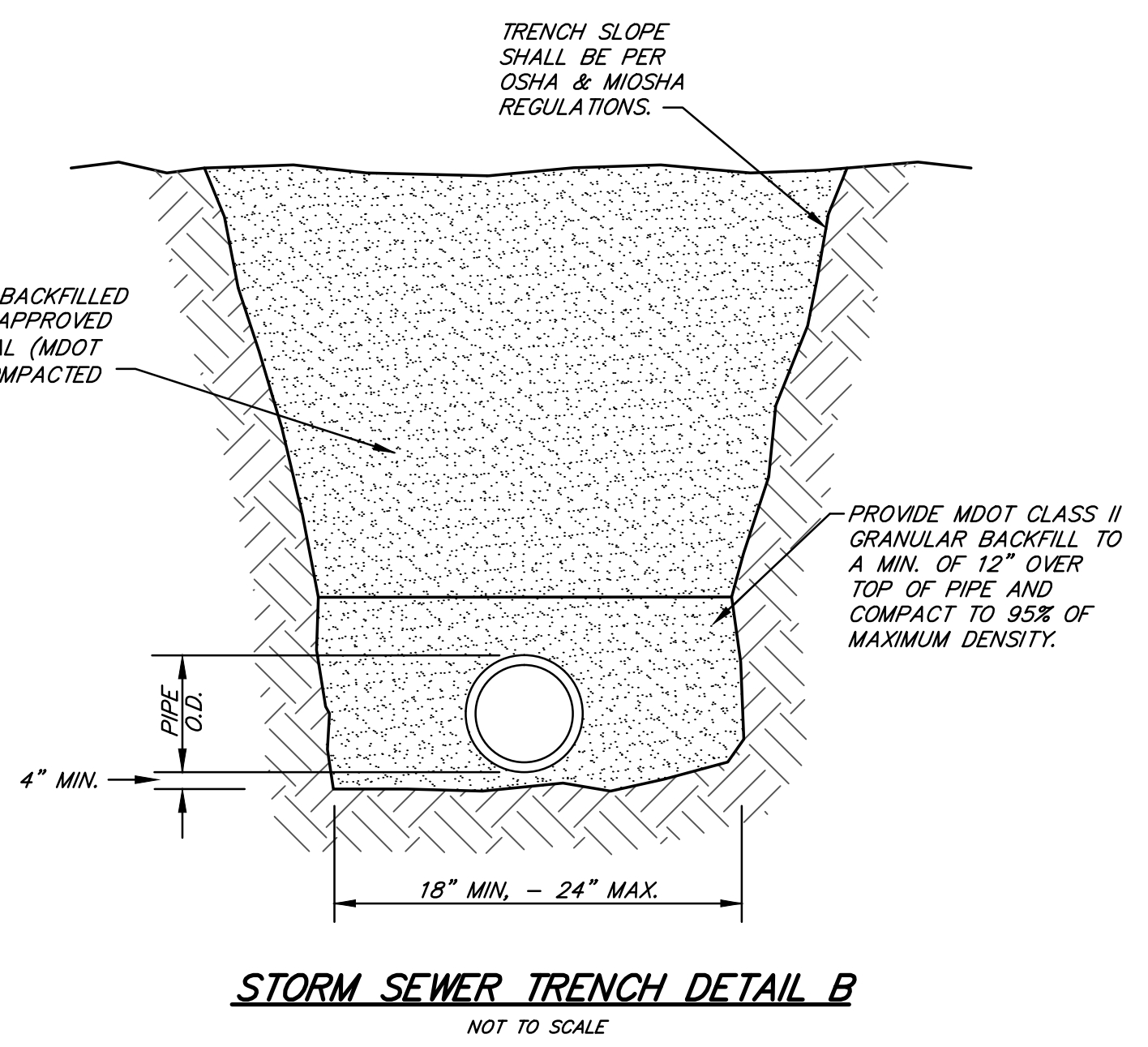
BY	MARK	REVISIONS	DATE
<p>OWOSSO PUBLIC SCHOOL DISTRICT OWOSSO, MICHIGAN</p> <p>2015 SINKING FUND GYM LIGHTING PLAN OWOSSO HIGH SCHOOL</p>			
<p>Spicer group</p> <p>SAGINAW OFFICE 230 S. Washington Ave. Saginaw, MI 48607 Tel. 989-754-4717 Fax. 989-754-4440 www.SpicerGroup.com</p>			
DE. BY: LAM	CH. BY: DMH	PROJECT NO. 121889SG2014	
DR. BY: KMT	APP. BY: DMH		
STDS.	SHEET 8 OF 9	E 1	
DATE MARCH, 2015	FILE NO. DE-1011-01		
SCALE 1/8" = 1'-0"			

PLOTING SCALE: RET. F.B. PG. ACAD FILE.



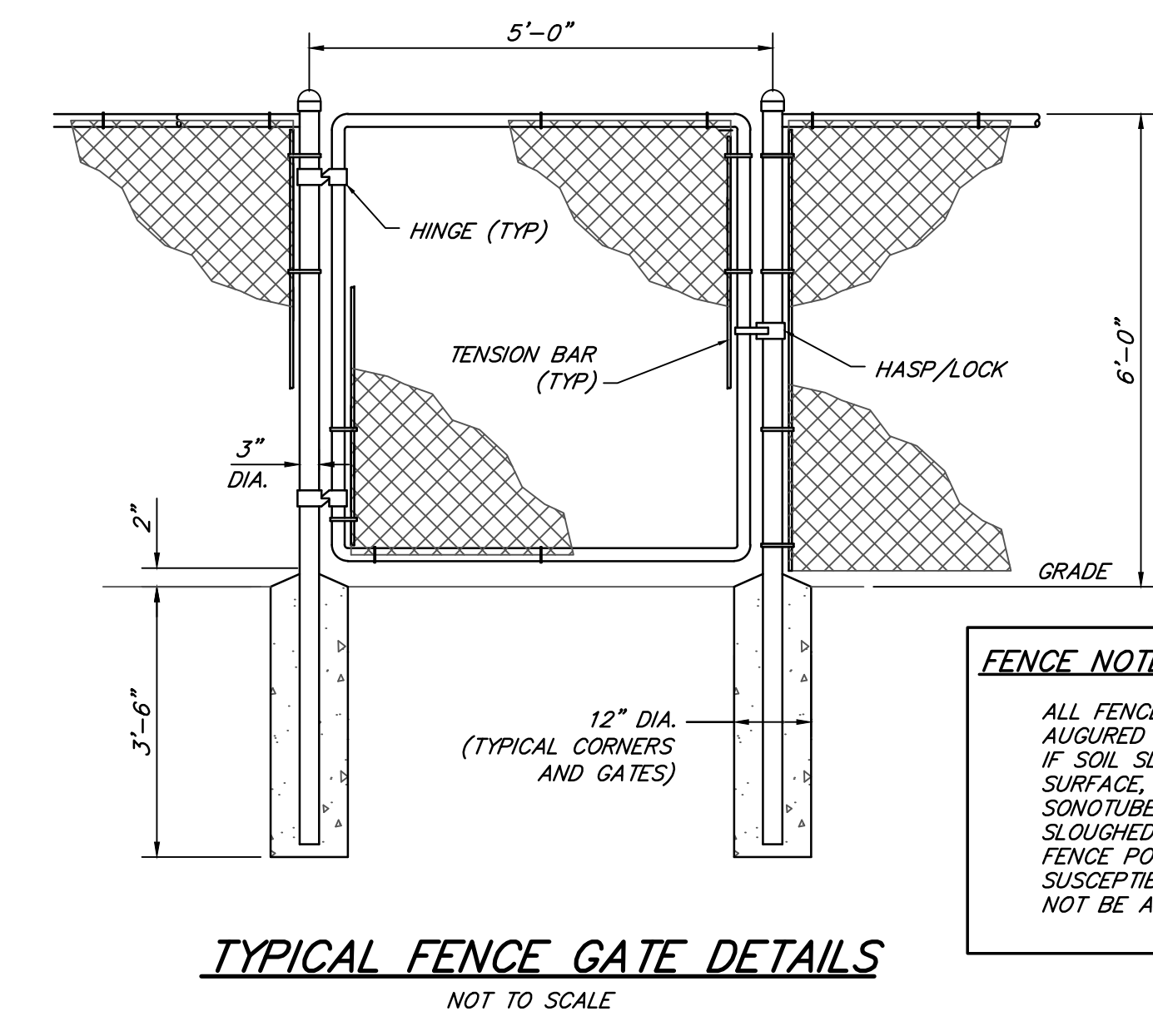
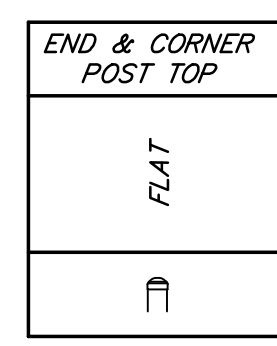
TRENCH WIDTH CHART

PIPE SIZE	TRENCH WIDTH	
	MINIMUM	MAXIMUM
6"	18"	24"



DOUBLE LEAF GATES

NOM. HEIGHT (H)	UPRIGHT HEIGHT (U)	FRAME HEIGHT (F)
6'-0"	5'-10"	5'-8 1/2"
OPENING	GATE POSTS	HINGE SPACE(S)
FACE TO FACE	ROUND SIZES	POST TO UPRIGHT
10'-0"	3" DIA.	FOR SQ. & RND. GATE POSTS: 2-1/4"



FENCE NOTE:
ALL FENCE POST HOLES SHALL BE AUGURED WITH NEAT VERTICAL SIDES. IF SOIL SLOUGHING OCCURS NEAR THE SURFACE, CYLINDER FORMS SUCH AS SONOTUBE SHALL BE USED IN ALL SLOUGHED AREAS. MUSHROOM SHAPED FENCE POST FOUNDATIONS ARE SUSCEPTIBLE TO FROST HEAVE AND WILL NOT BE ALLOWED.

BY	MARK	REVISIONS	DATE
<p>THE WORK REPRESENTED BY THIS DRAWING WAS DESIGNED BY THE ENGINEER FOR THIS SPECIFIC APPLICATION AND SPECIFIC LOCATION DESCRIBED HEREIN IN ACCORDANCE WITH THE CONDITIONS PREVALENT AT THE TIME THE DESIGN WAS DONE. THE ENGINEER DOES NOT GUARANTEE AND WILL NOT BE LIABLE FOR ANY OTHER LOCATION, CONDITION, DESIGN OR PURPOSE.</p>			
<p>OWOSSO PUBLIC SCHOOL DISTRICT OWOSSO, MICHIGAN</p>			
<p>2015 SINKING FUND DETAILS OWOSSO HIGH SCHOOL</p>			
<p>DE. BY: AJS DR. BY: AJS</p>		<p>CH. BY: MDW APP. BY: DMH</p>	
<p>PROJECT NO. 121889SG2014</p>		<p>SAGINAW OFFICE 230 S. Washington Ave. Saginaw, MI 48607 Tel. 989-754-4717 Fax. 989-754-4440 www.SpicerGroup.com</p>	
STDS.	SHEET 9 OF 9		
DATE SCALE	MARCH, 2015 NONE	FILE NO.	D-5103-08

ACAD FILE: PG. F.B. RET. PLOTTING SCALE: