

DEMOLITION KEYNOTES

(NOT ALL NOTES USED ON ALL SHEETS)

- ① EXISTING ALUMINUM WINDOWS AND GLAZING WILL BE REMOVED BY OWNER'S ASBESTOS CONTRACTOR. WINDOW REMOVAL IS NOT IN CONTRACT.
- ② EXISTING STEEL COLUMN TO REMAIN.
- ③ EXISTING DOORS, FRAME, SIDE LIGHT AND TRANSOM WILL BE REMOVED BY OWNER'S ASBESTOS CONTRACTOR. DOOR REMOVAL IS NOT IN CONTRACT.
- ④ REMOVE EXISTING MARBLE SILLS AND SHADES / BLINDS.

CONSTRUCTION KEYNOTES

(NOT ALL NOTES USED ON ALL SHEETS)

- ◇ RESTORE CEILING TO FRAME
- ◇ ACCESS CONTROL
- ◇ PRIVACY GLASS
- ◇ FRP PANEL LOW, GLASS TRANSOM

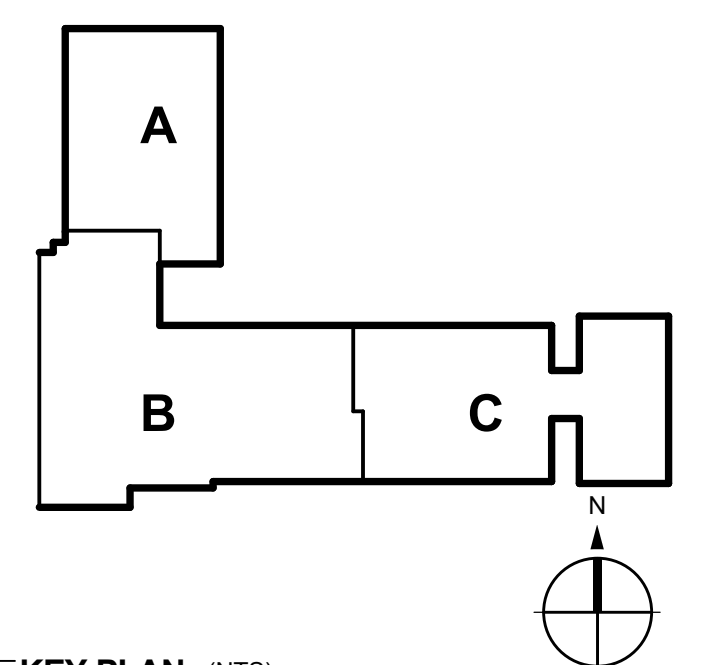
Final Plans for Bidding and Construction



AIRPORT COMMUNITY SCHOOLS
EYLER ELEMENTARY SCHOOL
WINDOW / DOOR REPLACEMENT
Carleton, Michigan

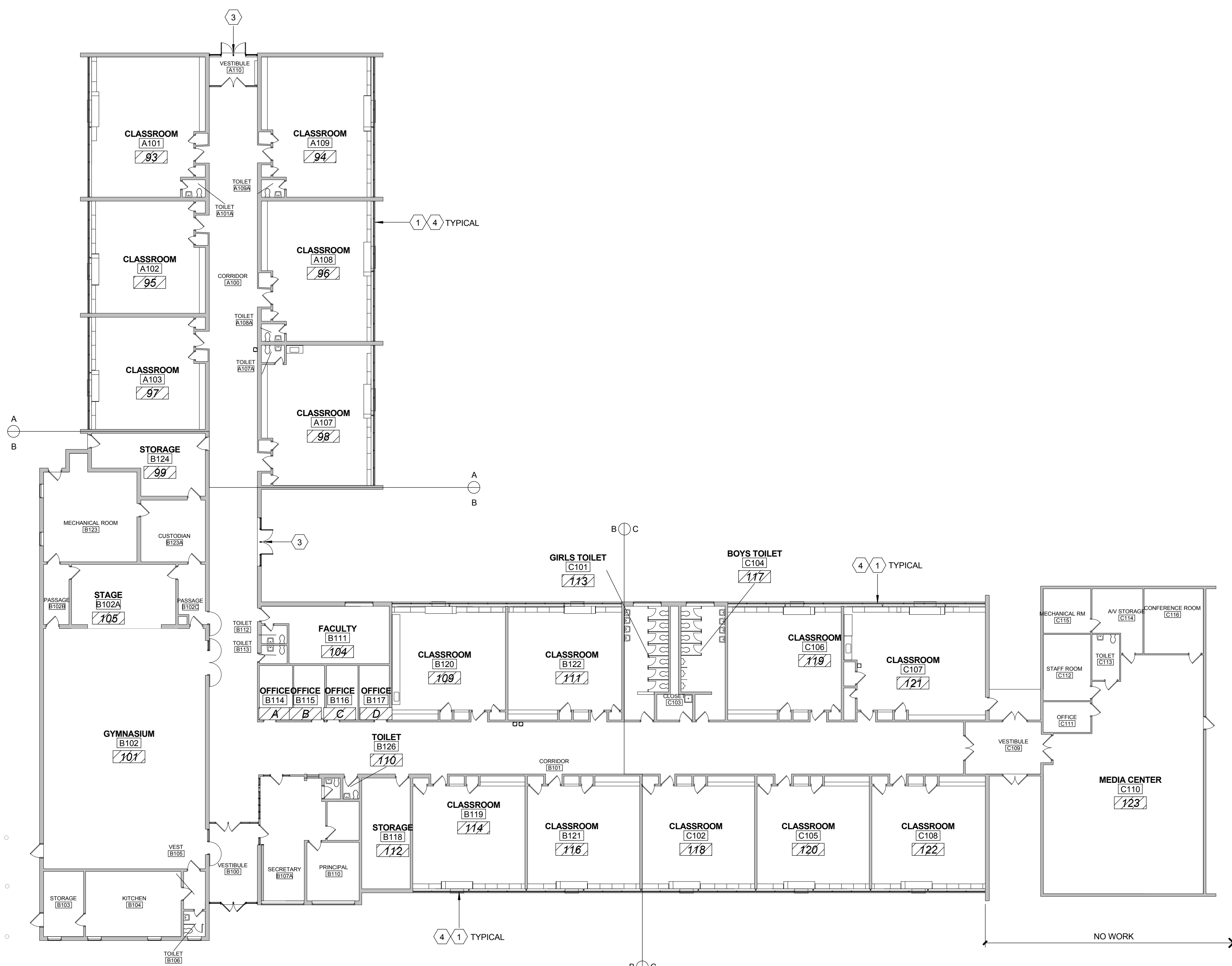
DRAWN: Author
CHECKED: Checker
SCALE: As indicated

ISSUE:
03-23-15 BDS



KEY PLAN (NTS)
SHEET TITLE:
COMPOSITE PLAN

A011
214100176



A5 COMPOSITE PLAN
1/16" = 1'-0"

3/20/2016 2:34:15 PM C:\Users\Public\Documents\Local_Revit_Files\214100176 EYler A14_mibazanov.rvt