



architects
engineers
www.woldae.com

333 W. Seventh Street
Three Hundred Twenty
Royal Oak, MI 48067

tel 248 284 0611
fax 248 284 0615
mail@woldae.com

To: Prospective Bidders
From: Wold Architects and Engineers
Date: August 19, 2013
Comm. No: 134012

Subject: Addendum No. 1 for Bidding Documents for the: Great Lakes Academy
Door Replacement
Pontiac, Michigan

BIDS DUE AUGUST 29, 2013 AT 2:00 P.M.

*****NOTE BID DATE CHANGE*****

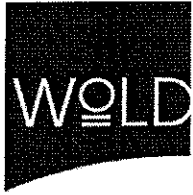
This addendum forms a part of the Contract Documents dated June 28, 2013. Acknowledge receipt of this Addendum on the space provided on the Bid Form. Failure to do so may result in disqualification of Bid.

This Addendum consists of two (2) typed sheets and attachments:
Specification Sections: 00 41 13 Bid Form, 00 41 16 Non-Iran Linked Business Certification, 00 73 43 Prevailing Wages Information Sheet: Prevailing Wages on State Projects and Official 2013 Prevailing Wage Rates for State Funded Projects, 01 11 00 Summary of Work, 08 71 00 Finish Hardware
Drawings: R1/A1.11

PROJECT MANUAL

1. SPECIFICATION SECTION 00 01 01 PROJECT IDENTIFICATION PAGE.
A. Change bid date from "August 22, 2013" to "August 29, 2013"
2. SPECIFICATION SECTION 00 10 00 ADVERTISEMENT FOR BIDS.
A. Change bid date from "August 22, 2013" to "August 29, 2013"
3. SPECIFICATION SECTION 00 41 13 BID FORM.
A. Re-Issued this Addendum.
4. SPECIFICATION SECTION 00 41 16 NON IRAN LINKED BUSINESS CERTIFICATION.
A. Issued this Addendum.
5. SPECIFICATION SECTION 00 73 43 PREVAILING WAGES.
A. Add the following attachments, issued this Addendum:
1) Information Sheet: Prevailing Wages on State Projects.
2) Official 2013 Prevailing Wage Rates for State Funded Projects.
6. SPECIFICATION SECTION 01 11 00 SUMMARY OF WORK.
A. Re-issued this Addendum.
7. SPECIFICATION SECTION 08 71 00 FINISH HARDWARE.
A. Re-issued this Addendum.

Minnesota
Illinois
Michigan
Colorado
Iowa



architects
engineers
www.woldae.com

DRAWINGS

1. DRAWINGS A1.11 FIRST AND SECOND FLOOR PLANS, DOOR DETAILS, MATERIAL COLOR SCHEDULE.
 - A. Refer to attached sketch R1/A1.11 to revise work to be added to Alt. #2, issued this Addendum.
 - B. Revise floor plan general note No. 2 to read "remove all identification plates riveted on to lockers (Lyon Brand) on the first floor. Install "NEW" identification plates on ALL lockers on the first floor..." in lieu of "install identification plates on ALL lockers on the first floor..."
 - C. Change Door/Opening Schedule information for Doors A104A, A104B, A122, A222, A321B, and A321A per attached Sketch R1/A1.11.

END OF ADDENDUM #1

Minnesota
Illinois
Michigan
Colorado
Iowa

SECTION 00 41 13

BID FORM

**BID PROPOSAL FOR: GREAT LAKES ACADEMY DOOR REPLACEMENT
46312 WOODWARD AVENUE
PONTIAC, MICHIGAN 48342**

BID TO: Great Lake Academy
Great Lakes Academy Multi-Purpose Room First Floor
46312 Woodward Avenue
Pontiac, Michigan 48342

BID FROM: _____

We have examined the Contract Documents for the proposed Great Lakes Academy Door Replacement as prepared by Wold Architects and Engineers, Royal Oak, Michigan, and the conditions affecting the work.

In accordance therewith the undersigned proposes to furnish all labor and materials for Construction as set forth in the Contract Documents, including Addenda Nos. _____ issued thereto.

1. Accompanying this proposal is a Bid Security for all work, required to be furnished by Contract Documents, the same being subject to forfeiture in the event of default by the undersigned.
2. Accompanying this proposal is a Familial Affidavit of Bidder.
3. I agree to complete the Project, provided a contract is executed within 30 calendar days, by *January 3, 2014*.
4. I understand the Owner reserves the right to reject any or all bids, and it is agreed that this bid may not be withdrawn for a period of thirty (30) days from the opening thereof.

A. Base Bid

1. The Bidder agrees to perform all work including General, Mechanical and Electrical Construction for the Base Bid Sum of:

_____ Dollars \$

B. Alternates

1. The Bidder agrees to add to or deduct from the Base Bid Sum the following amounts to perform the alternate work described in Section 01 23 00, including all associated costs.

- a. Alternate No. 1 Additional door replacement at toilet rooms

Add/Deduct _____ Dollars \$

- b. Alternate No. 2 *Additional miscellaneous door replacement and locker modifications identified as "Alt. No. 2" on the plans*

Add Add/Deduct _____ Dollars \$ _____

- c. Alternate No. 3 Exterior door replacement.

Add Add/Deduct _____ Dollars \$ _____

DATE _____

FIRM NAME _____

OFFICIAL ADDRESS _____

TELEPHONE NUMBER () _____

FAX NUMBER () _____

BY _____

TITLE _____

END OF SECTION 00 41 13

SECTION 00 41 16

NON-IRAN LINKED BUSINESS CERTIFICATION

The undersigned, the owner or authorized officer of _____ (the "Bidder"), pursuant to the Iran Economic Sanction Act of 2012, Public Act 517, provided in the Dearborn Heights School District No. 7 advertisement for construction bids, hereby represent and warrant, that the Bidder is not an Iran Liked Business.

The Act defines an Iran Linked Business as: 1) a person engaging in investment activities in the energy sector of Iran, including a person that provides oil or liquefied natural gas tankers or products used to construct or maintain pipelines used to transport oil or liquefied natural gas for the energy sector of Iran; or 2) a financial institution that extends credit to another person, if that person will use the credit to engage in investment activities in the energy sector of Iran.

If the public entity determines, using credible information available to the public, that a person or entity has submitted a false certification, the public entity must provide written notice to the person or entity of its determination and of its intent not to enter into or renew the contract. The notice must include information on how to contest the determination. The notice must also specify that the individual or entity may become eligible for future contracts with the public entity if the activities that caused it to be an Iran Linked Business are ceased.

BIDDER:

By: _____

Its: _____

STATE OF MICHIGAN)
)ss.
COUNTY OF _____)

This instrument was acknowledged before me on the _____ day of _____, 2009, by _____.

, Notary Public
_____ County, Michigan

My Commission Expires: _____

Acting in the County of: _____

END OF SECTION 00 41 16



RICK. SNYDER
GOVERNOR



STATE OF MICHIGAN

Prevailing Wages
PO Box 30476
Lansing, MI 48909
517-322-1825

Informational Sheet: Prevailing Wages on State Projects

REQUIREMENTS OF THE PREVAILING WAGES ON STATE PROJECTS ACT, PUBLIC ACT 166 OF 1965

The State of Michigan determines prevailing rates pursuant to the Prevailing Wages on State Projects Act, Public Act 166 of 1965, as amended. The purpose of establishing prevailing rates is to provide minimum rates of pay that must be paid to workers on construction projects for which the state or a school district is the contracting agent and which is financed or financially supported by the state. By law, prevailing rates are compiled from the rates contained in collectively bargained agreements which cover the locations of the state projects. The official prevailing rate schedule provides an hourly rate which includes *wage and fringe benefit totals* for designated construction mechanic classifications. The overtime rates also include *wage and fringe benefit totals*. Please pay special attention to the overtime and premium pay requirements. Prevailing wage is satisfied when wages plus fringe benefits paid to a worker are equal to or greater than the required rate.

State of Michigan responsibilities under the law:

- The department establishes the prevailing rate for each classification of construction mechanic **requested by a contracting agent** prior to contracts being let out for bid on a state project.

Contracting agent responsibilities under the law:

- If a contract is not awarded or construction does not start within 90 days of the date of the issuance of rates, a re-determination of rates must be requested by the contracting agent.
- Rates for classifications needed but not provided on the Prevailing Rate Schedule, **must** be obtained **prior** to contracts being let out for bid on a state project.
- The contracting agent, by written notice to the contractor and the sureties of the contractor known to the contracting agent, may terminate the contractor's right to proceed with that part of the contract, for which less than the prevailing rates have been or will be paid, and may proceed to complete the contract by separate agreement with another contractor or otherwise, and the original contractor and his sureties shall be liable to the contracting agent for any excess costs occasioned thereby.

Contractor responsibilities under the law:

- Every contractor and subcontractor shall keep posted on the construction site, in a conspicuous place, a copy of all prevailing rates prescribed in a contract.
- Every contractor and subcontractor shall keep an accurate record showing the name and occupation of and the actual wages and benefits paid to each construction mechanic employed by him in connection including certified payroll, as used in the industry, with said contract. This record shall be available for reasonable inspection by the contracting agent or the department.
- Each contractor or subcontractor is separately liable for the payment of the prevailing rate to its employees.
- The prime contractor is responsible for advising all subcontractors of the requirement to pay the prevailing rate prior to commencement of work.
- The prime contractor is secondarily liable for payment of prevailing rates that are not paid by a subcontractor.
- A construction mechanic *shall only* be paid the apprentice rate if registered with the United States Department of Labor, Bureau of Apprenticeship and Training and the rate is included in the contract.

Enforcement:

A person who has information of an alleged prevailing wage violation on a state project may file a complaint with the State of Michigan. The department will investigate and attempt to resolve the complaint informally. During the course of an investigation, if the requested records and posting certification are not made available in compliance with Section 5 of Act 166, the investigation will be concluded and a referral to the Office of Attorney General for civil action will be made. The Office of Attorney General will pursue costs and fees associated with a lawsuit if filing is necessary to obtain records.



RICK. SNYDER
GOVERNOR



STATE OF MICHIGAN

Prevailing Wages
PO Box 30476
Lansing, MI 48909
517-322-1825

Informational Sheet: Prevailing Wages on State Projects

General Information Regarding Fringe Benefits

Certain fringe benefits may be credited toward the payment of the Prevailing Wage Rate:

- If a fringe benefit is paid directly to a construction mechanic
- If a fringe benefit contribution or payment is made on behalf of a construction mechanic
- If a fringe benefit, which may be provided to a construction mechanic, is pursuant to a written contract or policy
- If a fringe benefit is paid into a fund, for a construction mechanic

When a fringe benefit is not paid by an hourly rate, the hourly credit will be calculated based on the annual value of the fringe benefit divided by 2080 hours per year (52 weeks @ 40 hours per week).

The following is an example of the types of fringe benefits allowed and how an hourly credit is calculated:

Vacation	40 hours X \$14.00 per hour = \$560/2080 =	\$.27
Dental insurance	\$31.07 monthly premium X 12 mos. = \$372.84 /2080 =	\$.18
Vision insurance	\$5.38 monthly premium X 12 mos. = \$64.56/2080 =	\$.03
Health insurance	\$230.00 monthly premium X 12 mos. = \$2,760.00/2080 =	\$1.33
Life insurance	\$27.04 monthly premium X 12 mos. = \$324.48/2080 =	\$.16
Tuition	\$500.00 annual cost/2080 =	\$.24
Bonus	4 quarterly bonus/year x \$250 = \$1000.00/2080 =	\$.48
401k Employer Contribution	\$2000.00 total annual contribution/2080 =	\$.96
Total Hourly Credit		\$3.65

Other examples of the types of fringe benefits allowed:

- Sick pay
- Holiday pay
- Accidental Death & Dismemberment insurance premiums

The following are examples of items that **will not** be credited toward the payment of the Prevailing Wage Rate

- Legally required payments, such as:
 - Unemployment Insurance payments
 - Workers' Compensation Insurance payments
 - FICA (Social Security contributions, Medicare contributions)
- Reimbursable expenses, such as:
 - Clothing allowance or reimbursement
 - Uniform allowance or reimbursement
 - Gas allowance or reimbursement
 - Travel time or payment
 - Meals or lodging allowance or reimbursement
 - Per diem allowance or payment
- Other payments to or on behalf of a construction mechanic that are not wages or fringe benefits, such as:
 - Industry advancement funds
 - Financial or material loans



State of Michigan
 DEPARTMENT OF LICENSING AND REGULATORY AFFAIRS
 MICHIGAN OCCUPATIONAL SAFETY AND HEALTH ADMINISTRATION
 MARTHA B. YODER
 DIRECTOR

OVERTIME PROVISIONS for MICHIGAN PREVAILING WAGE RATE COMMERCIAL SCHEDULE

1. Overtime is represented as a nine character code. Each character represents a certain period of time after the first 8 hours Monday thru Friday.

	Monday thru Friday	Saturday	Sunday & Holidays	Four 10s
First 8 Hours		4	8	9
9th Hour	1	5		
10th Hour	2	6		
Over 10 hours	3	7		

Overtime for Monday thru Friday after 8 hours:

the 1st character is for time worked in the 9th hour (8.1 - 9 hours)
 the 2nd character is for time worked in the 10th hour (9.1 - 10 hours)
 the 3rd character is for time worked beyond the 10th hour (10.1 and beyond)

Overtime on Saturday:

the 4th character is for time worked in the first 8 hours on Saturday (0 - 8 hours)
 the 5th character is for time worked in the 9th hour on Saturday (8.1 - 9 hours)
 the 6th character is for time worked in the 10th hour (9.1 - 10 hours)
 the 7th character is for time worked beyond the 10th hour (10.01 and beyond)

Overtime on Sundays & Holidays

The 8th character is for time worked on Sunday or on a holiday

Four Ten Hour Days

The 9th character indicates if an optional 4-day 10-hour per day workweek can be worked **between Monday and Friday without paying overtime after 8 hours worked, unless otherwise noted in the rate schedule. To utilize a 4 ten workweek, notice is required from the employer to employee prior to the start of work on the project.**

2. Overtime Indicators Used in the Overtime Provision:

H - means TIME AND ONE-HALF due
 X - means TIME AND ONE-HALF due after 40 HOURS worked
 D - means DOUBLE PAY due
 Y - means YES an optional 4-day 10-hour per day workweek can be worked without paying overtime after 8 hours worked
 N - means NO an optional 4-day 10-hour per day workweek *can not* be worked without paying overtime after 8 hours worked

3. EXAMPLES:

HHHHHHHDN - This example shows that the 1½ rate must be used for time worked after 8 hours Monday thru Friday (characters 1 - 3); for all hours worked on Saturday, 1½ rate is due (characters 4 - 7). Work done on Sundays or holidays must be paid double time (character 8). The N (character 9) indicates that 4 ten-hour days is not an acceptable workweek at regular pay.

XXXHHHHDY - This example shows that the 1½ rate must be used for time worked after 40 hours are worked Monday thru Friday (characters 1-3); for hours worked on Saturday, 1½ rate is due (characters 4 - 7). Work done on Sundays or holidays must be paid double time (character 8). The Y (character 9) indicates that 4 ten-hour days is an acceptable alternative workweek.

LARA is an equal opportunity employer.
 Auxiliary aids, services and other reasonable accommodations are available upon request to individuals with disabilities.

ENGINEERS - CLASSES OF EQUIPMENT LIST

UNDERGROUND ENGINEERS	HAZARDOUS WASTE ABATEMENT ENGINEERS
<p>CLASS I Backfiller Tamber, Backhoe, Batch Plant Operator, Clam-Shell, Concrete Paver (2 drums or larger), Conveyor Loader (Euclid type), Crane (crawler, truck type or pile driving), Dozer, Dragline, Elevating Grader, End Loader, Gradall (and similar type machine), Grader, Power Shovel, Roller (asphalt), Scraper (self propelled or tractor drawn), Side Broom Tractor (type D-4 or larger), Slope Paver, Trencher (over 8' digging capacity), Well Drilling Rig, Mechanic, Slip Form Paver, Hydro Excavator.</p> <p>CLASS II Boom Truck (power swing type boom), Crusher, Hoist, Pump (1 or more 6" discharge or larger gas or diesel powered by generator of 300 amps or more, inclusive of generator), Side Boom Tractor (smaller than type D-4 or equivalent), Tractor (pneu-tired, other than backhoe or front end loader), Trencher (8' digging capacity and smaller), Vac Truck.</p> <p>CLASS III Air Compressors (600 cfm or larger), Air Compressors (2 or more less than 600 cfm), Boom Truck (non-swinging, non-powered type boom), Concrete Breaker (self-propelled or truck mounted, includes compressor), Concrete Paver (1 drum, ½ yard or larger), Elevator (other than passenger), Maintenance Man, Mechanic Helper, Pump (2 or more 4" up to 6" discharge, gas or diesel powered, excluding submersible pump), Pumpcrete Machine (and similar equipment), Wagon Drill Machine, Welding Machine or Generator (2 or more 300 amp or larger, gas or diesel powered).</p> <p>CLASS IV Boiler, Concrete Saw (40HP or over), Curing Machine (self-propelled), Farm Tractor (w/attachment), Finishing Machine (concrete), Firemen, Hydraulic Pipe Pushing Machine, Mulching Equipment, Oiler (2 or more up to 4", exclude submersible), Pumps (2 or more up to 4" discharge if used 3 hrs or more a day-gas or diesel powered, excluding submersible pumps), Roller (other than asphalt), Stump Remover, Vibrating Compaction Equipment (6' wide or over), Trencher (service) Sweeper (Wayne type and similar equipment), Water Wagon, Extend-a-Boom Forklift.</p>	<p>CLASS I Backhoe, Batch Plant Operator, Clamshell, Concrete Breaker when attached to hoe, Concrete Cleaning Decontamination Machine Operator, Concrete Pump, Concrete Paver, Crusher, Dozer, Elevating Grader, Endloader, Farm Tractor (90 h.p. and higher), Gradall, Grader, Heavy Equipment Robotics Operator, Hydro Excavator, Loader, Pug Mill, Pumpcrete Machines, Pump Trucks, Roller, Scraper (self-propelled or tractor drawn), Side Boom Tractor, Slip Form Paver, Slope Paver, Trencher, Ultra High Pressure Waterjet Cutting Tool System Operator, Vactors, Vacuum Blasting Machine Operator, Vertical Lifting Hoist, Vibrating Compaction Equipment (self-propelled), and Well Drilling Rig.</p> <p>CLASS II Air Compressor, Concrete Breaker when not attached to hoe, Elevator, End Dumps, Equipment Decontamination Operator, Farm Tractor (less than 90 h.p.), Forklift, Generator, Heater, Mulcher, Pigs (Portable Reagent Storage Tanks), Power Screens, Pumps (water), Stationary Compressed Air Plant, Sweeper, Water Wagon and Welding Machine.</p>

State of Michigan

WHPWRequest@michigan.gov

Official Request #: 1024

Requestor: Great Lakes Academy

Project Description: Academy Multi-Purpose Room - Door Replacement

Project Number:

**Oakland County
Official 2013 Prevailing Wage Rates for State Funded Projects**

Issue Date: 8/14/2013

Contract must be awarded by: 11/12/2013

Page 1 of 30

<u>Classification</u>	<u>Name</u>	<u>Description</u>	<u>Last Updated</u>	<u>Straight Hourly</u>	<u>Time and a Half</u>	<u>Double Time</u>	<u>Overtime Provision</u>
Asbestos & Lead Abatement Laborer							
Asbestos & Lead Abatement Laborer		MLDC	10/23/2012	\$38.85	\$51.87	\$64.89	H H H X X X D Y
4 ten hour days @ straight time allowed Monday-Saturday, must be consecutive calendar days							
Asbestos & Lead Abatement, Hazardous Material Handler							
Asbestos and Lead Abatement, Hazardous Material Handler		AS207	10/23/2012	\$38.85	\$52.00	\$65.15	H H H X X X D Y
4 ten hour days @ straight time allowed Monday-Saturday,							
Boilermaker							
Boilermaker		BO169	8/14/2009	\$54.70	\$81.08	\$107.45	H H H H H H D Y
Apprentice Rates:							
		1st 6 months		\$40.31	\$59.49	\$78.67	
		2nd 6 months		\$41.45	\$61.21	\$80.95	
		3rd 6 months		\$42.57	\$62.88	\$83.19	
		4th 6 months		\$43.69	\$64.57	\$85.43	
		5th 6 months		\$44.81	\$66.24	\$87.67	
		6th 6 months		\$49.53	\$73.40	\$97.26	
		7th 6 months		\$49.32	\$73.01	\$96.69	
		8th 6 months		\$51.58	\$76.40	\$101.21	

Official Request #: 1024

Requestor: Great Lakes Academy

Project Description: Academy Multi-Purpose Room - Door Replacement

Project Number:

County: Oakland

Official Rate Schedule

Every contractor and subcontractor shall keep posted on the construction site, in a conspicuous place, a copy of all prevailing wage and fringe benefit rates prescribed in a contract.

Official 2013 Prevailing Wage Rates for State Funded Projects

Issue Date: 8/14/2013

Contract must be awarded by: 11/12/2013

Page 2 of 30

Classification	Last Updated	Straight Hourly	Time and a Half	Double Time	Overtime Provision
Name	Description				

Bricklayer

Bricklayer, stone mason, pointer, cleaner, caulker	BR1	11/1/2012	\$51.43	\$77.15	\$102.86 H H D H D D D D N
--	-----	-----------	---------	---------	----------------------------

Between October 1 and April 30, if lost time occurs due to inclement weather, Saturday may be worked as a make-up day @ straight time until forty hours are worked.

Apprentice Rates:

First 6 months	\$31.21	\$46.84	\$62.42
2nd 6 months	\$33.06	\$49.61	\$66.12
3rd 6 months	\$34.91	\$52.39	\$69.82
4th 6 months	\$36.76	\$55.16	\$73.52
5th 6 months	\$38.61	\$57.93	\$77.22
6th 6 months	\$40.46	\$60.71	\$80.92
7th 6 months	\$42.31	\$63.49	\$84.62
8th 6 months	\$44.16	\$66.26	\$88.32

Carpenter

Carpet and Resilient Floor Layer, (does not include installation of prefabricated formica & parquet flooring which is to be paid carpenter rate)	CA1045	9/15/2011	\$46.04	\$65.56	\$85.07 X X H X X X D Y
--	--------	-----------	---------	---------	-------------------------

Apprentice Rates:

1st 6 months	\$22.62	\$30.43	\$38.23
2nd 6 months	\$26.52	\$36.27	\$46.03
3rd 6 months	\$28.48	\$39.21	\$49.95
4th 6 months	\$30.43	\$42.14	\$53.85
5th 6 months	\$32.39	\$45.08	\$57.77
6th 6 months	\$34.33	\$48.00	\$61.65
7th 6 months	\$36.29	\$50.94	\$65.57
8th 6 months	\$38.23	\$53.84	\$69.45

Carpenter-four 10s allowed Mon-Sat; double time due when over 12 hours worked per day	CA687Z1	10/31/2012	\$52.54	\$75.17	\$97.79 X X H X X H H D Y
---	---------	------------	---------	---------	---------------------------

Apprentice Rates:

1st year	\$32.18	\$44.63	\$57.07
3rd 6 months	\$34.45	\$48.04	\$61.61
4th 6 months	\$36.71	\$51.42	\$66.13
5th 6 months	\$38.97	\$54.81	\$70.65
6th 6 months	\$41.23	\$58.20	\$75.17
7th 6 months	\$43.49	\$61.60	\$79.69
8th 6 months	\$45.76	\$65.00	\$84.23

Official Request #: 1024

Requestor: Great Lakes Academy

Project Description: Academy Multi-Purpose Room - Door Replacement

Project Number:

County: Oakland

Official Rate Schedule

Every contractor and subcontractor shall keep posted on the construction site, in a conspicuous place, a copy of all prevailing wage and fringe benefit rates prescribed in a contract.

Official 2013 Prevailing Wage Rates for State Funded Projects

Issue Date: 8/14/2013

Contract must be awarded by: 11/12/2013

Page 3 of 30

Classification Name Description	Last Updated	Straight Hourly	Time and a Half	Double Time	Overtime Provision
Piledriver Four 10s allowed Monday-Saturday; double time due when over 12 hours worked per day	CA687Z1P 10/31/2012	\$52.54	\$75.17	\$97.79	X X H X X H H D Y

Apprentice Rates:

1st 6 months	\$32.18	\$44.63	\$57.07
2nd 6 months	\$36.71	\$51.42	\$66.13
3rd 6 months	\$41.23	\$58.20	\$75.17
4th 6 months	\$45.76	\$65.00	\$84.23

Subdivision of county

Cement Mason
Cement Mason

brlcm

11/1/2012

\$48.30 \$67.47 \$86.63 X X H H H H D N

Apprentice Rates:

1st 6 months	\$28.32	\$37.91	\$47.49
2nd 6 months	\$30.29	\$40.83	\$51.37
3rd 6 months	\$34.23	\$46.68	\$59.14
4th 6 months	\$38.18	\$52.56	\$66.93
5th 6 months	\$40.15	\$55.48	\$70.81
6th 6 months	\$44.10	\$61.35	\$78.60

Cement Mason

CE514

11/10/2011

\$46.30 \$64.89 \$83.48 H H D H H H D N

Apprentice Rates:

1st 6 months	\$26.77	\$36.07	\$45.36
2nd 6 months	\$28.68	\$38.91	\$49.13
3rd 6 months	\$32.50	\$44.59	\$56.66
4th 6 months	\$36.32	\$50.26	\$64.19
5th 6 months	\$38.24	\$53.11	\$67.98
6th 6 months	\$42.06	\$58.79	\$75.51

Drywall

Drywall Taper
Four 10s allowed Monday-Thursday

PT-22-D

7/3/2012

\$43.16 \$56.14 \$69.11 H H D H D D D D Y

Apprentice Rates:

First 3 months	\$30.19	\$36.68	\$43.17
Second 3 months	\$32.78	\$40.57	\$48.35
Second 6 months	\$35.37	\$44.45	\$53.53
Third 6 months	\$37.97	\$48.35	\$58.73
4th 6 months	\$39.27	\$50.30	\$61.33

Official Request #: 1024

Requestor: Great Lakes Academy

Project Description: Academy Multi-Purpose Room - Door Replacement

Project Number:

County: Oakland

Official Rate Schedule

Every contractor and subcontractor shall keep posted on the construction site, in a conspicuous place, a copy of all prevailing wage and fringe benefit rates prescribed in a contract.

Official 2013 Prevailing Wage Rates for State Funded Projects

Issue Date: 8/14/2013

Contract must be awarded by: 11/12/2013

Page 4 of 30

Classification Name Description	Last Updated	Straight Hourly	Time and a Half	Double Time	Overtime Provision
Electrician Road Way Electrical Work Double time due after 16 hours on any calendar day and all hours Sunday.	EC-17 8/6/2013	\$50.53	\$73.30	\$96.06	H H H H H H H D Y
Apprentice Rates:					
1st 6 months		\$32.32	\$45.98	\$59.64	
2nd 6 months		\$34.59	\$49.39	\$64.18	
3rd 6 months		\$36.88	\$52.82	\$68.76	
4th 6 months		\$39.15	\$56.23	\$73.30	
5th 6 months		\$41.43	\$59.65	\$77.86	
6th 6 months		\$45.97	\$66.46	\$86.94	
 Inside Wireman	 EC-58-IW 6/26/2013	 \$57.73	 \$75.80	 \$93.86	 H H H H H H H D N
Apprentice Rates:					
0-1000 hours		\$36.05	\$43.27	\$50.50	
1000-2000 hours		\$37.86	\$45.99	\$54.12	
2000-3500 hours		\$39.67	\$48.71	\$57.74	
3500-5000 hours		\$41.47	\$51.41	\$61.34	
5000-6500 hours		\$45.08	\$56.82	\$68.56	
6500-8000 hours		\$48.70	\$62.25	\$75.80	
 Sound and Communication Installer/Technician 4 consecutive 10s allowed M-TH	 EC-58-SC 4/16/2013	 \$36.12	 \$48.24	 \$60.36	 H H H H H H H D Y
Apprentice Rates:					
Period 1		\$23.99	\$30.06	\$36.11	
Period 2		\$25.21	\$31.88	\$38.55	
Period 3		\$26.41	\$33.68	\$40.95	
Period 4		\$27.63	\$35.51	\$43.39	
Period 5		\$28.84	\$37.33	\$45.81	
Period 6		\$30.06	\$39.16	\$48.25	

Official Request #: 1024
 Requestor: Great Lakes Academy
 Project Description: Academy Multi-Purpose Room - Door Replacement
 Project Number:
 County: Oakland

Official Rate Schedule
 Every contractor and subcontractor shall keep posted on the construction site, in a conspicuous place, a copy of all prevailing wage and fringe benefit rates prescribed in a contract.

Official 2013 Prevailing Wage Rates for State Funded Projects

Issue Date: 8/14/2013

Contract must be awarded by: 11/12/2013

Page 5 of 30

Classification Name Description	Last Updated	Straight Hourly	Time and a Half	Double Time	Overtime Provision
Lineman/Technician outside utility and commercial power and high voltage pipe type cable work and electrical underground.	EC-876 11/18/2009	\$47.05	\$68.11	\$89.17	H H H H H H D Y

Four 10s allowed Monday-Thursday with Friday makeup or Tuesday-Friday with Monday makeup.

Apprentice Rates:

1st period	\$30.20	\$42.69	\$55.26
2nd period	\$32.32	\$46.02	\$59.70
3rd period	\$34.42	\$49.16	\$63.90
4th period	\$36.53	\$52.33	\$68.12
5th period	\$38.63	\$55.47	\$72.32
6th period	\$40.74	\$58.64	\$76.54
7th period	\$42.84	\$61.79	\$80.74

Subdivision of county Holly Township only

Elevator Constructor

Elevator Constructor	EL 36	\$56.46	\$94.99	D D D D D D D Y
----------------------	-------	---------	---------	-----------------

8/7/2007

Apprentice Rates:

1st Year Apprentice	\$37.74	\$58.93
2nd Year Apprentice	\$41.90	\$66.94
3rd Year Apprentice	\$43.98	\$70.95
4th Year Apprentice	\$48.14	\$78.96

Glazier

Glazier	GL-357	\$46.21	\$64.51	\$82.80	H H H H H H D Y
---------	--------	---------	---------	---------	-----------------

7/3/2012

If a four 10 hour day workweek is scheduled, four 10s must be consecutive, M-F.

Apprentice Rates:

1st 6 months	\$31.63	\$42.64	\$53.64
2nd 6 months	\$33.09	\$44.83	\$56.56
3rd 6 months	\$36.00	\$49.19	\$62.38
4th 6 months	\$37.46	\$51.39	\$65.30
5th 6 months	\$38.92	\$53.57	\$68.22
6th 6 months	\$40.38	\$55.77	\$71.14
7th 6 months	\$41.84	\$57.95	\$74.06
8th 6 months	\$44.75	\$62.32	\$79.88

Heat and Frost Insulator

Spray Insulation	AS25S	\$20.14	\$29.14	H H H H H H H N
------------------	-------	---------	---------	-----------------

3/5/2007

Official Request #: 1024
 Requestor: Great Lakes Academy
 Project Description: Academy Multi-Purpose Room - Door Replacement
 Project Number:
 County: Statewide

Official Rate Schedule

Every contractor and subcontractor shall keep posted on the construction site, in a conspicuous place, a copy of all prevailing wage and fringe benefit rates prescribed in a contract.

Official 2013 Prevailing Wage Rates for State Funded Projects

Issue Date: 8/14/2013

Contract must be awarded by: 11/12/2013

Page 6 of 30

Classification	Last Updated	Straight Hourly	Time and a Half	Double Time	Overtime Provision
Name Description					

Heat and Frost Insulator and Asbestos Worker

Heat and Frost Insulators and Asbestos Workers	AS25	8/14/2009	\$53.15	\$68.54	\$83.92	H H H H H H D Y
--	------	-----------	---------	---------	---------	-----------------

Four 10s must be worked for a minimum of 2 weeks consecutively, Monday thru Thursday. All hours worked in excess of 10 will be paid at double time. All hours worked on the fifth day, Monday thru Friday will paid at time and one-half.

Apprentice Rates:

1st Year	\$39.30	\$47.76	\$56.22
2nd Year	\$42.38	\$52.38	\$62.38
3rd Year	\$43.92	\$54.69	\$65.46
4th Year	\$47.00	\$59.31	\$71.62

Ironworker

Fence, Sound Barrier & Guardrail erection/installation and Exterior Signage work	IR-25-F1	4/2/2013	\$33.15	\$45.15	\$57.15	X X H X X X H D Y
--	----------	----------	---------	---------	---------	-------------------

Four ten hour work days may be worked during Monday-Saturday.

Apprentice Rates:

60% Level	\$22.75	\$29.95	\$37.15
65% Level	\$24.05	\$31.85	\$39.65
70% Level	\$25.36	\$33.76	\$42.16
75% Level	\$26.65	\$35.65	\$44.65
80% Level	\$27.95	\$37.55	\$47.15
85% Level	\$29.25	\$39.45	\$49.65

Siding, Glazing, Curtain Wall

4 tens may be worked Monday thru Thursday @ straight time.	IR-25-G22	4/11/2013	\$44.11	\$55.52	\$66.93	X X H H H H D D Y
--	-----------	-----------	---------	---------	---------	-------------------

Apprentice Rates:

Level 1	\$27.18	\$33.53	\$39.88
Level 2	\$29.29	\$36.27	\$43.25
Level 3	\$31.41	\$39.03	\$46.64
Level 4	\$33.53	\$41.78	\$50.02
Level 5	\$35.64	\$44.53	\$53.40
Level 6	\$37.76	\$47.28	\$56.78

Official Request #: 1024

Requestor: Great Lakes Academy

Project Description: Academy Multi-Purpose Room - Door Replacement

Project Number:

County: Oakland

Official Rate Schedule

Every contractor and subcontractor shall keep posted on the construction site, in a conspicuous place, a copy of all prevailing wage and fringe benefit rates prescribed in a contract.

Official 2013 Prevailing Wage Rates for State Funded Projects

Issue Date: 8/14/2013

Contract must be awarded by: 11/12/2013

Page 7 of 30

Classification Name Description	Last Updated	Straight Hourly	Time and a Half	Double Time	Overtime Provision
Pre-engineered Metal Work	IR-25-PE-Z1 6/3/2013	\$44.59	\$54.71	\$64.83	X X H X X X D Y
Apprentice Rates:					
1st Year		\$25.46	\$30.77	\$36.08	
3rd 6 month period		\$27.58	\$33.64	\$39.70	
4th 6 month period		\$29.71	\$36.53	\$43.35	
5th 6 month period		\$31.83	\$39.40	\$46.97	
6th 6 month period		\$33.96	\$42.29	\$50.61	
Reinforced Iron Work	IR-25-RF 6/25/2013	\$54.61	\$81.78	\$108.95	H H D H D D D D N
Apprentice Rates:					
Level 1		\$34.66	\$51.56	\$68.45	
Level 2		\$37.11	\$55.23	\$73.35	
Level 3		\$39.54	\$58.70	\$77.84	
Level 4		\$42.16	\$62.80	\$83.45	
Level 5		\$44.76	\$66.71	\$88.65	
Level 6		\$47.38	\$70.64	\$93.89	
Rigging Work	IR-25-RIG 6/25/2013	\$60.28	\$90.26	\$120.24	H H H H H H D N
Apprentice Rates:					
Level 1 & 2		\$34.93	\$52.39	\$69.86	
Level 3		\$37.80	\$56.71	\$75.60	
Level 4		\$40.66	\$60.99	\$81.32	
Level 5		\$43.53	\$65.29	\$87.06	
Level 6		\$46.41	\$69.62	\$92.82	
Decking 4 tens may be worked Monday thru Thursday @ straight time. If bad weather, Friday may be a make up day. If holiday celebrated on a Monday, 4 10s may be worked Tuesday thru Friday. Work in excess of 12 hours per day must be paid @ double time.	IR-25-SD 6/25/2013	\$52.24	\$78.08	\$103.92	X X H H H H D D Y

Official Request #: 1024
 Requestor: Great Lakes Academy
 Project Description: Academy Multi-Purpose Room - Door Replacement
 Project Number:
 County: Oakland

Official Rate Schedule
 Every contractor and subcontractor shall keep posted on the construction site, in a conspicuous place, a copy of all prevailing wage and fringe benefit rates prescribed in a contract.

Official 2013 Prevailing Wage Rates for State Funded Projects

Issue Date: 8/14/2013

Contract must be awarded by: 11/12/2013

Page 8 of 30

Classification Name Description	Last Updated	Straight Hourly	Time and a Half	Double Time	Overtime Provision
Structural, ornamental, conveyor, welder and pre-cast 4 tens may be worked Monday thru Thursday @ straight time. If bad weather, Friday may be a make up day. If holiday celebrated on a Monday, 4 10s may be worked Tuesday thru Friday. Work in excess of 12 hours per day must be paid @ double time.	IR-25-STR 6/25/2013	\$60.41	\$90.34	\$120.26	H H H H H D D Y

Apprentice Rates:

Levels 1 & 2	\$35.06	\$52.64	\$69.98
Level 3	\$37.89	\$56.52	\$75.14
Level 4	\$40.71	\$60.74	\$80.78
Level 5	\$43.54	\$65.37	\$86.94
Level 6	\$46.37	\$69.24	\$92.10
Level 7	\$49.19	\$73.47	\$97.74
Level 8	\$52.02	\$77.71	\$103.40

Industrial Door erection & construction	IR-25-STR-D 6/27/2013	\$40.97	\$61.13	\$81.29	H H H H H D D Y
---	------------------------------	---------	---------	---------	-----------------

Laborer

Construction Laborer, Demolition Laborer, Mason Tender, Carpenter Tender, Drywall Handler, Concrete Laborer, Cement Finisher tender, concrete chute and concrete Bucket Handler, Concrete Laborer	L1076-A-A 6/13/2013	\$43.54	\$61.94	\$80.33	H H H H H D D Y
--	----------------------------	---------	---------	---------	-----------------

If conditions beyond the employer/employee's control prevent one or more hours of working during Mon-Fri, the employer may choose to work up to 10 hour straight time weekdays. Work may be scheduled up to 10 hours per Mon-Fri for the purpose of reaching 40 hours @ straight time. Make up days may also include 8 hours of work on Saturdays @ straight time.

Apprentice Rates:

0-1,000 work hours	\$37.60	\$53.03	\$68.45
1,001-2,000 work hours	\$38.79	\$54.81	\$70.83
2,001-3,000 work hours	\$39.98	\$56.60	\$73.21
3,001-4,000 work hours	\$42.35	\$60.15	\$77.95

Official Request #: 1024

Requestor: Great Lakes Academy

Project Description: Academy Multi-Purpose Room - Door Replacement

Project Number:

County: Oakland

Official Rate Schedule

Every contractor and subcontractor shall keep posted on the construction site, in a conspicuous place, a copy of all prevailing wage and fringe benefit rates prescribed in a contract.

Official 2013 Prevailing Wage Rates for State Funded Projects

Issue Date: 8/14/2013

Contract must be awarded by: 11/12/2013

Page 9 of 30

Classification Name Description		Last Updated	Straight Hourly	Time and a Half	Double Time	Overtime Provision
Signal man (on sewer & caisson work); air,electric or gasoline tool operator (including concrete vibrator operator,acetylene torch & air hammer operator); scaffold builder, caisson worker	L1076-A-B	6/13/2013	\$43.80	\$62.33	\$80.85	H H H H H H D Y

If conditions beyond the employer/employee's control prevent one or more hours of working during Mon-Fri, the employer may choose to work up to 10 hour straight time weekdays. Work may be scheduled up to 10 hours per Mon-Fri for the purpose of reaching 40 hours @ straight time. Make up days may also include 8 hours of work on Saturdays @ straight time.

Lansing Burner, Blaster & Powder Man	L1076-A-C	6/13/2013	\$44.29	\$63.06	\$81.83	H H H H H H D Y
--------------------------------------	-----------	-----------	---------	---------	---------	-----------------

If conditions beyond the employer/employee's control prevent one or more hours of working during Mon-Fri, the employer may choose to work up to 10 hour straight time weekdays. Work may be scheduled up to 10 hours per Mon-Fri for the purpose of reaching 40 hours @ straight time. Make up days may also include 8 hours of work on Saturdays @ straight time.

Furnance battery heater tender, burning bar & oxy-acetylene gun	L1076-A-D	6/13/2013	\$44.04	\$62.69	\$81.33	H H H H H H D Y
---	-----------	-----------	---------	---------	---------	-----------------

If conditions beyond the employer/employee's control prevent one or more hours of working during Mon-Fri, the employer may choose to work up to 10 hour straight time weekdays. Work may be scheduled up to 10 hours per Mon-Fri for the purpose of reaching 40 hours @ straight time. Make up days may also include 8 hours of work on Saturdays @ straight time.

Cleaner/ sweeper laborer, furniture laborer	L1076-A-E	6/13/2013	\$38.09	\$53.76	\$69.43	H H H H H H D Y
---	-----------	-----------	---------	---------	---------	-----------------

If conditions beyond the employer/employee's control prevent one or more hours of working during Mon-Fri, the employer may choose to work up to 10 hour straight time weekdays. Work may be scheduled up to 10 hours per Mon-Fri for the purpose of reaching 40 hours @ straight time. Make up days may also include 8 hours of work on Saturdays @ straight time.

Official Request #: 1024
 Requestor: Great Lakes Academy
 Project Description: Academy Multi-Purpose Room - Door Replacement
 Project Number:
 County: Oakland

Official Rate Schedule
 Every contractor and subcontractor shall keep posted on the construction site, in a conspicuous place, a copy of all prevailing wage and fringe benefit rates prescribed in a contract.

Official 2013 Prevailing Wage Rates for State Funded Projects

Issue Date: 8/14/2013

Contract must be awarded by: 11/12/2013

Page 10 of 30

Classification Name Description	Last Updated	Straight Hourly	Time and a Half	Double Time	Overtime Provision
Expediter man, topman and/or bottom man (blast furnace work or battery work)	L1076-A-F 6/13/2013	\$44.79	\$63.81	\$82.83	H H H H H H D Y

If conditions beyond the employer/employee's control prevent one or more hours of working during Mon-Fri, the employer may choose to work up to 10 hour straight time weekdays. Work may be scheduled up to 10 hours per Mon-Fri for the purpose of reaching 40 hours @ straight time. Make up days may also include 8 hours of work on Saturdays @ straight time.

Plasterer Tender, Plastering Machine Operator	LPT-1 6/8/2012	\$42.31	\$60.11	\$77.90	H H H H H H D N
---	-----------------------	---------	---------	---------	-----------------

If conditions beyond the employer/employee's control prevent one or more hours of working during Mon-Fri, the employer may choose to work up to 10 hour straight time weekdays. Work may be scheduled up to 10 hours per Mon-Fri for the purpose of reaching 40 hours @ straight time. Make up days may also include 8 hours of work on Saturdays @ straight time.

Apprentice Rates:

0 - 1,000 hours	\$36.43	\$51.29	\$66.14
1,001 - 2,000 hours	\$37.60	\$53.04	\$68.48
2,001 - 3,000 hours	\$38.78	\$54.82	\$70.84
3,001 - 4,000 hours	\$41.13	\$58.34	\$75.54

Laborer - Hazardous

Class A Laborer - performing work in conjunction with site preparation and other preliminary work prior to actual removal, handling, or containment of hazardous waste substances not requiring use of personal protective equipment required by state or federal regulations; or a laborer performing work in conjunction with the removal, handling, or containment of hazardous waste substances when used of personal protective equipment level "D" is required.	LHAZ-Z2-A 3/6/2013	\$42.31	\$60.11	\$77.90	H H H H H H D Y
---	---------------------------	---------	---------	---------	-----------------

Apprentice Rates:

0-1,000 work hours	\$36.43	\$51.29	\$66.14
1,001-2,000 work hours	\$37.60	\$53.04	\$68.48
2,001-3,000 work hours	\$38.78	\$54.82	\$70.84
3,001-4,000 work hours	\$41.13	\$58.34	\$75.54

Official Request #: 1024
 Requestor: Great Lakes Academy
 Project Description: Academy Multi-Purpose Room - Door Replacement
 Project Number:
 County: Oakland

Official Rate Schedule

Every contractor and subcontractor shall keep posted on the construction site, in a conspicuous place, a copy of all prevailing wage and fringe benefit rates prescribed in a contract.

Official 2013 Prevailing Wage Rates for State Funded Projects

Issue Date: 8/14/2013

Contract must be awarded by: 11/12/2013

Page 11 of 30

Classification Name Description	Last Updated	Straight Hourly	Time and a Half	Double Time	Overtime Provision
Class B Laborer - performing work in conjunction with the removal, handling, or containment of hazardous waste substances when the use of personal protective equipment levels "A", "B" or "C" is required. LHAZ-Z2-B	3/6/2013	\$43.31	\$61.61	\$79.90	H H H H H H D Y
Apprentice Rates:					
0-1,000 work hours		\$37.17	\$52.40	\$67.62	
1,001-2,000 work hours		\$38.40	\$54.24	\$70.08	
2,001-3,000 work hours		\$39.63	\$56.09	\$72.54	
3,001-4,000 work hours		\$42.08	\$59.76	\$77.44	
Laborer Underground - Tunnel, Shaft & Caisson					
Class I - Tunnel, shaft and caisson laborer, dump man, shanty man, hog house tender, testing man (on gas), and watchman. LAUCT-Z1-1	1/16/2013	\$36.92	\$47.61	\$58.29	H H H H H H D Y
Apprentice Rates:					
0-1,000 work hours		\$32.10	\$40.38	\$48.65	
1,001-2,000 work hours		\$33.07	\$41.83	\$50.59	
2,001-3,000 work hours		\$34.03	\$43.27	\$52.51	
3,001-4,000 work hours		\$35.96	\$46.16	\$56.37	
Class II - Manhole, headwall, catch basin builder, bricklayer tender, mortar man, material mixer, fence erector, and guard rail builder. LAUCT-Z1-2	1/16/2013	\$37.03	\$47.77	\$58.51	H H H H H H D Y
Apprentice Rates:					
0-1,000 work hours		\$32.19	\$40.51	\$48.83	
1,001-2,000 work hours		\$33.15	\$41.95	\$50.75	
2,001-3,000 work hours		\$34.12	\$43.40	\$52.69	
3,001-4,000 work hours		\$36.06	\$46.32	\$56.57	

Official Request #: 1024
 Requestor: Great Lakes Academy
 Project Description: Academy Multi-Purpose Room - Door Replacement
 Project Number:
 County: Oakland

Official Rate Schedule
 Every contractor and subcontractor shall keep posted on the construction site, in a conspicuous place, a copy of all prevailing wage and fringe benefit rates prescribed in a contract.

Official 2013 Prevailing Wage Rates for State Funded Projects

Issue Date: 8/14/2013

Contract must be awarded by: 11/12/2013

Page 12 of 30

Classification Name Description	Last Updated	Straight Hourly	Time and a Half	Double Time	Overtime Provision
Class III - Air tool operator (jack hammer man, bush hammer man and grinding man), first bottom man, second bottom man, cage tender, car pusher, carrier man, concrete man, concrete form man, concrete repair man, cement invert laborer, cement finisher, concrete shoveler, conveyor man, floor man, gasoline and electric tool operator, gunnite man, grout operator, welder, heading dinky man, inside lock tender, pea gravel operator, pump man, outside lock tender, scaffold man, top signal man, switch man, track man, tugger man, utility man, vibrator man, winch operator, pipe jacking man, wagon drill and air track operator and concrete saw operator (under 40 h.p.).	LAUCT-Z1-3 1/16/2013	\$37.09	\$47.86	\$58.63	H H H H H H D Y
Apprentice Rates:					
	0-1,000 work hours	\$32.23	\$40.57	\$48.91	
	1,001-2,000 work hours	\$33.20	\$42.02	\$50.85	
	2,001-3,000 work hours	\$34.17	\$43.48	\$52.79	
	3,001-4,000 work hours	\$36.12	\$46.40	\$56.69	
Class IV - Tunnel, shaft and caisson mucker, bracer man, liner plate man, long haul dinky driver and well point man.	LAUCT-Z1-4 1/16/2013	\$37.27	\$48.13	\$58.99	H H H H H H D Y
Apprentice Rates:					
	0-1,000 work hours	\$32.37	\$40.78	\$49.19	
	1,001-2,000 work hours	\$33.35	\$42.25	\$51.15	
	2,001-3,000 work hours	\$34.33	\$43.72	\$53.11	
	3,001-4,000 work hours	\$36.29	\$46.66	\$57.03	
Class V - Tunnel, shaft and caisson miner, drill runner, keyboard operator, power knife operator, reinforced steel or mesh man (e.g. wire mesh, steel mats, dowel bars)	LAUCT-Z1-5 1/16/2013	\$37.52	\$48.51	\$59.49	H H H H H H D Y
Apprentice Rates:					
	0-1,000 work hours	\$32.55	\$41.05	\$49.55	
	1,001-2,000 work hours	\$33.55	\$42.55	\$51.55	
	2,001-3,000 work hours	\$34.54	\$44.04	\$53.53	
	3,001-4,000 work hours	\$36.53	\$47.02	\$57.51	
Class VI - Dynamite man and powder man.	LAUCT-Z1-6 1/16/2013	\$37.85	\$49.00	\$60.15	H H H H H H D Y
Apprentice Rates:					
	0-1,000 work hours	\$32.80	\$41.42	\$50.05	
	1,001-2,000 work hours	\$33.81	\$42.94	\$52.07	
	2,001-3,000 work hours	\$34.82	\$44.46	\$54.09	
	3,001-4,000 work hours	\$36.84	\$47.48	\$58.13	

Official Request #: 1024
 Requestor: Great Lakes Academy
 Project Description: Academy Multi-Purpose Room - Door Replacement
 Project Number:
 County: Oakland

Official Rate Schedule

Every contractor and subcontractor shall keep posted on the construction site, in a conspicuous place, a copy of all prevailing wage and fringe benefit rates prescribed in a contract.

Official 2013 Prevailing Wage Rates for State Funded Projects

Issue Date: 8/14/2013

Contract must be awarded by: 11/12/2013

Page 13 of 30

Classification Name Description	Last Updated	Straight Hourly	Time and a Half	Double Time	Overtime Provision
------------------------------------	-----------------	--------------------	--------------------	----------------	-----------------------

Class VII - Restoration laborer, seeding, sodding, planting, cutting, mulching and topsoil grading and the restoration of property such as replacing mail boxes, wood chips, planter boxes and flagstones.	LAUCT-Z1-7 1/16/2013	\$31.13	\$38.92	\$46.71	H H H H H H H D Y
--	-------------------------	---------	---------	---------	-------------------

Apprentice Rates:

0-1,000 work hours	\$27.76	\$33.86	\$39.97
1,001-2,000 work hours	\$28.43	\$34.87	\$41.31
2,001-3,000 work hours	\$29.11	\$35.89	\$42.67
3,001-4,000 work hours	\$30.46	\$37.92	\$45.37

Landscape Laborer

Landscape Specialist includes air, gas, and diesel equipment operator, skidsteer (or equivalent), lawn sprinkler installer on landscaping work where seeding, sodding, planting, cutting, trimming, backfilling, rough grading or maintenance of landscape projects occurs.	LLAN-Z1-A 7/5/2013	\$28.18	\$38.91	\$49.64	X X H X X X H D Y
---	-----------------------	---------	---------	---------	-------------------

Sundays paid at time & one half. Holidays paid at double time.

Skilled Landscape Laborer: small power tool operator, lawn sprinkler installers' tender, material mover, truck driver when seeding, sodding, planting, cutting, trimming, backfilling, rough grading or maintaining of landscape projects occurs	LLAN-Z1-B 7/5/2013	\$23.96	\$32.58	\$41.20	X X H X X X H D Y
--	-----------------------	---------	---------	---------	-------------------

Sundays paid at time & one half. Holidays paid at double time.

Marble Finisher

Marble Finisher A 4 ten workweek may be worked Monday thru Thursday or Tuesday thru Friday.	BR1-MF 11/16/2012	\$42.41	\$53.10	\$63.79	H H D H D D D D Y
--	----------------------	---------	---------	---------	-------------------

Apprentice Rates:

Level 1	\$18.57	\$24.54	\$30.52
Level 2	\$19.74	\$26.30	\$32.86
Level 3	\$26.34	\$33.11	\$39.87
Level 4	\$27.77	\$35.25	\$42.73
Level 5	\$29.25	\$36.95	\$44.65
Level 6	\$30.83	\$38.92	\$47.02
Level 7	\$32.48	\$40.65	\$48.82
Level 8	\$33.93	\$42.50	\$51.08

Official Request #: 1024

Requestor: Great Lakes Academy

Project Description: Academy Multi-Purpose Room - Door Replacement

Project Number:

County: Oakland

Official Rate Schedule

Every contractor and subcontractor shall keep posted on the construction site, in a conspicuous place, a copy of all prevailing wage and fringe benefit rates prescribed in a contract.

Official 2013 Prevailing Wage Rates for State Funded Projects

Issue Date: 8/14/2013

Contract must be awarded by: 11/12/2013

Page 14 of 30

Classification Name Description	Last Updated	Straight Hourly	Time and a Half	Double Time	Overtime Provision
Marble Mason Marble Mason A 4 ten workweek may be worked Monday thru Thursday or Tuesday thru Friday.	BR1-MM 11/16/2012	\$49.05	\$63.06	\$77.07	H H D H D D D D Y
Apprentice Rates:					
Level 1		\$24.52	\$31.83	\$39.13	
Level 2		\$27.50	\$35.59	\$43.67	
Level 3		\$32.59	\$40.95	\$49.31	
Level 4		\$35.26	\$44.56	\$53.86	
Level 5		\$37.47	\$47.04	\$56.61	
Level 6		\$41.04	\$52.32	\$63.60	
Level 7		\$41.69	\$53.15	\$64.61	
Level 8		\$42.60	\$54.51	\$66.43	
Operating Engineer Crane with boom & jib or leads 120' or longer Work in excess of 12 per day shall be paid at double time.	EN-324-A120 8/2/2013	\$56.01	\$73.30	\$90.58	X X H H D D D D Y
Crane with boom & jib or leads 140' or longer Work in excess of 12 per day shall be paid at double time.	EN-324-A140 8/2/2013	\$56.83	\$74.53	\$92.22	X X H H D D D D Y
Crane with boom & jib or leads 220' or longer Work in excess of 12 per day shall be paid at double time.	EN-324-A220 8/2/2013	\$57.13	\$74.98	\$92.82	X X H H D D D D Y
Crane with boom & jib or leads 300' or longer Work in excess of 12 per day shall be paid at double time.	EN-324-A300 8/2/2013	\$58.63	\$77.23	\$95.82	X X H H D D D D Y
Crane with boom & jib or leads 400' or longer Work in excess of 12 per day shall be paid at double time.	EN-324-A400 8/2/2013	\$60.13	\$79.48	\$98.82	X X H H D D D D Y
Compressor or welding machine Work in excess of 12 per day shall be paid at double time.	EN-324-CW 8/2/2013	\$45.16	\$57.02	\$68.88	X X H H D D D D Y
Forklift, lull, extend-a-boom forklift Work in excess of 12 per day shall be paid at double time.	EN-324-FL 8/2/2013	\$52.47	\$67.99	\$83.50	X X H H D D D D Y

Official Request #: 1024
 Requestor: Great Lakes Academy
 Project Description: Academy Multi-Purpose Room - Door Replacement
 Project Number:
 County: Oakland

Official Rate Schedule
 Every contractor and subcontractor shall keep posted
 on the construction site, in a conspicuous place, a copy
 of all prevailing wage and fringe benefit rates
 prescribed in a contract.

Official 2013 Prevailing Wage Rates for State Funded Projects

Issue Date: 8/14/2013

Contract must be awarded by: 11/12/2013

Page 15 of 30

Classification Name Description	Last Updated	Straight Hourly	Time and a Half	Double Time	Overtime Provision
Fireman or oiler Work in excess of 12 per day shall be paid at double time.	EN-324-FO 8/2/2013	\$44.13	\$55.48	\$66.82	X X H H D D D D Y
Regular crane, job mechanic, concrete pump with boom Work in excess of 12 per day shall be paid at double time.	EN-324-RC 8/2/2013	\$55.15	\$72.01	\$88.86	X X H H D D D D Y
Regular engineer, hydro-excavator, remote controlled concrete breaker Work in excess of 12 per day shall be paid at double time.	EN-324-RE 8/2/2013	\$54.18	\$70.55	\$86.92	X X H H D D D D Y
Apprentice Rates:					
0-999 hours		\$43.51	\$54.98	\$66.43	
1,000-1,999 hours		\$45.14	\$57.41	\$69.69	
2,000-2,999 hours		\$46.79	\$59.89	\$72.99	
3,000-3,999 hours		\$48.42	\$62.34	\$76.25	
4,000-4,999 hours		\$50.05	\$64.78	\$79.51	
5,000-5,999 hours		\$51.70	\$67.26	\$82.81	

Operating Engineer - Marine Construction

Diver/Wet Tender, Engineer (hydraulic dredge) GLF-1 3/1/2013 \$63.00 \$82.35 \$101.70 X X H H H H H D Y

Holiday pay= \$121.05 per hour, wages & fringes

Subdivision of county all Great Lakes, islands therein, & connecting & tributary waters

Crane/Backhoe Operator, 70 ton or over Tug Operator,
Mechanic/Welder, Assistant Engineer (hydraulic dredge),
Leverman (hydraulic dredge), Diver Tender GLF-2 3/1/2013 \$61.50 \$80.10 \$98.70 X X H H H H H D Y

Holiday pay = \$117.30 per hour, wages & fringes

Subdivision of county All Great Lakes, islands therein, & connecting & tributary waters

Friction, Lattice Boom or Crane License Certification GLF-2B 3/1/2013 \$62.50 \$81.60 \$100.70 X X H H H H H D Y

Holiday pay = \$119.80

Subdivision of county All Great Lakes, islands, therein, & connecting & tributary waters

Official Request #: 1024
Requestor: Great Lakes Academy
Project Description: Academy Multi-Purpose Room - Door Replacement
Project Number:
County: Statewide

Official Rate Schedule

Every contractor and subcontractor shall keep posted on the construction site, in a conspicuous place, a copy of all prevailing wage and fringe benefit rates prescribed in a contract.

Official 2013 Prevailing Wage Rates for State Funded Projects

Issue Date: 8/14/2013

Contract must be awarded by: 11/12/2013

Page 16 of 30

Classification Name Description	Last Updated	Straight Hourly	Time and a Half	Double Time	Overtime Provision
Deck Equipment Operator, Machineryman, Maintenance of Crane (over 50 ton capacity) or Backhoe (115,000 lbs or more), Tug/Launch Operator, Loader, Dozer on Barge, Deck Machinery	GLF-3 3/1/2013	\$57.40	\$73.95	\$90.50	X X H H H H H D Y

Holiday pay = \$107.05 per hour, wages & fringes

Subdivision of county All Great Lakes, islands therein, & connecting & tributary waters

Deck Equipment Operator, (Machineryman/Fireman), (4 equipment units or more), Off Road Trucks, Deck Hand, Tug Engineer, & Crane Maintenance 50 ton capacity and under or Backhoe 115,000 lbs or less, Assistant Tug Operator	GLF-4 3/1/2013	\$51.85	\$65.63	\$79.40	X X H H H H H D Y
---	-------------------	---------	---------	---------	-------------------

Holiday pay = \$93.17 per hour, wages & fringes

Subdivision of county All Great Lakes, islands therein, & connecting & tributary waters

Operating Engineer Hazardous Waste Class I

Level A - Fully encapsulating chemical resistant suit w/ pressure demand, full face piece SCBA or pressure demand supplied air respirator w/ escape SCBA. The highest available level of respiratory, skin and eye protection.	EN-324-HWCI-Z1A 1/20/2012	\$51.84	\$67.86	\$83.87	H H H H H H H D Y
---	------------------------------	---------	---------	---------	-------------------

Four 10 hour days may be worked Monday-Thursday with
Friday as a straight-time make up day.

Apprentice Rates:

1st 6 months	\$41.63	\$52.85	\$64.05
2nd 6 months	\$43.23	\$55.25	\$67.25
3rd 6 months	\$44.83	\$57.64	\$70.45
4th 6 months	\$46.43	\$60.04	\$73.65
5th 6 months	\$48.03	\$62.44	\$76.85
6th 6 months	\$49.64	\$64.86	\$80.07

Official Request #: 1024

Requestor: Great Lakes Academy

Project Description: Academy Multi-Purpose Room - Door Replacement

Project Number:

County: Oakland

Official Rate Schedule

Every contractor and subcontractor shall keep posted
on the construction site, in a conspicuous place, a copy
of all prevailing wage and fringe benefit rates
prescribed in a contract.

Official 2013 Prevailing Wage Rates for State Funded Projects

Issue Date: 8/14/2013

Contract must be awarded by: 11/12/2013

Page 17 of 30

Classification		Last Updated	Straight Hourly	Time and a Half	Double Time	Overtime Provision
Name	Description					
Level B & C protection.	B - Pressure demand, full face SCBAEN-324-HWCI-Z1B or pressure demand supplied air respirator w/ escape SCBA w/chemical resistant clothing. C - Full face piece, air purifying canister-equipped respirator w/chemical resistant clothing.	1/20/2012	\$50.89	\$66.43	\$81.97	H H H H H H D Y

Four 10 hour days may be worked Monday-Thursday with Friday as a straight-time make up day.

Apprentice Rates:

1st 6 months	\$40.97	\$51.85	\$62.73
2nd 6 months	\$42.52	\$54.17	\$65.83
3rd 6 months	\$44.07	\$56.50	\$68.93
4th 6 months	\$45.64	\$58.86	\$72.07
5th 6 months	\$47.19	\$61.19	\$75.17
6th 6 months	\$48.74	\$63.51	\$78.27

Level D - Coveralls, safety boots, glasses or chemical splash goggles and hard hats.	EN-324-HWCI-Z1D	1/20/2012	\$49.59	\$64.48	\$79.37	H H H H H H D Y
--	-----------------	-----------	---------	---------	---------	-----------------

Four 10 hour days may be worked Monday-Thursday with Friday as a straight-time make up day.

Apprentice Rates:

1st 6 months	\$40.06	\$50.49	\$60.91
2nd 6 months	\$41.54	\$52.71	\$63.87
3rd 6 months	\$43.04	\$54.96	\$66.87
4th 6 months	\$44.53	\$57.19	\$69.85
5th 6 months	\$46.02	\$59.42	\$72.83
6th 6 months	\$47.50	\$61.65	\$75.79

Level D When Capping Landfill Coveralls, safety boots, glasses or chemical splash goggles and hard hats.	EN-324-HWCI-Z1DCL	1/20/2012	\$49.34	\$64.11	\$78.87	H H H H H H D Y
--	-------------------	-----------	---------	---------	---------	-----------------

Four 10 hour days may be worked Monday-Thursday with Friday as a straight-time make up day.

Apprentice Rates:

1st 6 months	\$39.89	\$50.23	\$60.57
2nd 6 months	\$41.36	\$52.44	\$63.51
3rd 6 months	\$42.83	\$54.64	\$66.45
4th 6 months	\$44.31	\$56.86	\$69.41
5th 6 months	\$45.79	\$59.08	\$72.37
6th 6 months	\$47.27	\$61.30	\$75.33

Official Request #: 1024

Requestor: Great Lakes Academy

Project Description: Academy Multi-Purpose Room - Door Replacement

Project Number:

County: Oakland

Official Rate Schedule

Every contractor and subcontractor shall keep posted on the construction site, in a conspicuous place, a copy of all prevailing wage and fringe benefit rates prescribed in a contract.

Official 2013 Prevailing Wage Rates for State Funded Projects

Issue Date: 8/14/2013

Contract must be awarded by: 11/12/2013

Page 18 of 30

Classification	Name	Description	Last Updated	Straight Hourly	Time and a Half	Double Time	Overtime Provision
----------------	------	-------------	--------------	-----------------	-----------------	-------------	--------------------

Operating Engineer Hazardous Waste Class II

Level A - Fully encapsulating chemical resistant suit w/ pressure demand, full face piece SCBA or pressure demand supplied air respirator w/ escape SCBA. The highest available level of respiratory, skin and eye protection.	EN-324-HWCII-Z1A 1/20/2012	\$47.61	\$61.51	\$75.41	H H H H H H H D Y
--	-------------------------------	---------	---------	---------	-------------------

Four 10 hour days may be worked Monday-Thursday with Friday as a straight-time make up day.

Level B & C protection. B - Pressure demand, full face SCBAEN-324-HWCII-Z1B or pressure demand supplied air respirator w/ escape SCBA w/chemical resistant clothing. C - Full face piece, air purifying canister-equipped respirator w/chemical resistant clothing.	EN-324-HWCII-Z1B 1/20/2012	\$46.66	\$60.09	\$73.51	H H H H H H H D Y
---	-------------------------------	---------	---------	---------	-------------------

Four 10 hour days may be worked Monday-Thursday with Friday as a straight-time make up day.

Level D - Coveralls, safety boots, glasses or chemical splash goggles and hard hats.	EN-324-HWCII-Z1D 1/20/2012	\$45.36	\$58.14	\$70.91	H H H H H H H D Y
--	-------------------------------	---------	---------	---------	-------------------

Four 10 hour days may be worked Monday-Thursday with Friday as a straight-time make up day.

Level D When Capping Landfill Coveralls, safety boots, glasses or chemical splash goggles and hard hats.	EN-324-HWCII-Z1DCL 1/20/2012	\$45.11	\$57.76	\$70.41	H H H H H H H D Y
--	---------------------------------	---------	---------	---------	-------------------

Four 10 hour days may be worked Monday-Thursday with Friday as a straight-time make up day.

Operating Engineer Hazardous Waste Crane w/ Boom & Jib leads 140' or longer

Level A - Fully encapsulating chemical resistant suit w/ pressure demand, full face piece SCBA or pressure demand supplied air respirator w/ escape SCBA. The highest available level of respiratory, skin and eye protection.	EN-324-HW140-Z1A 1/20/2012	\$54.49	\$71.83	\$89.17	H H H H H H H D Y
--	-------------------------------	---------	---------	---------	-------------------

Four 10 hour days may be worked Monday-Thursday with Friday as a straight-time make up day.

Official Request #: 1024
 Requestor: Great Lakes Academy
 Project Description: Academy Multi-Purpose Room - Door Replacement
 Project Number:
 County: Oakland

Official Rate Schedule

Every contractor and subcontractor shall keep posted on the construction site, in a conspicuous place, a copy of all prevailing wage and fringe benefit rates prescribed in a contract.

Official 2013 Prevailing Wage Rates for State Funded Projects

Issue Date: 8/14/2013

Contract must be awarded by: 11/12/2013

Page 19 of 30

Classification Name Description	Last Updated	Straight Hourly	Time and a Half	Double Time	Overtime Provision
Level B & C protection. B - Pressure demand, full face SCBAEN-324-HW140-Z1B or pressure demand supplied air respirator w/ escape SCBA w/chemical resistant clothing. C - Full face piece, air purifying canister-equipped respirator w/chemical resistant clothing.	1/20/2012	\$53.54	\$70.41	\$87.27	H H H H H H D Y
Four 10 hour days may be worked Monday-Thursday with Friday as a straight-time make up day.					
Level D Coveralls, safety boots, glasses or chemical splash goggles and hard hats.	EN-324-HW140-Z1D 1/20/2012	\$52.24	\$68.46	\$84.67	H H H H H H D Y
Four 10 hour days may be worked Monday-Thursday with Friday as a straight-time make up day.					
Level D When Capping Landfill Coveralls, safety boots, glasses or chemical splash goggles and hard hats.	EN-324-HW140-Z1DCL 1/20/2012	\$51.99	\$68.08	\$84.17	H H H H H H D Y
Four 10 hour days may be worked Monday-Thursday with Friday as a straight-time make up day.					
Operating Engineer Hazardous Waste Crane w/ Boom & Jib leads 220' or longer					
Level A - Fully encapsulating chemical resistant suit w/ pressure demand, full face piece SCBA or pressure demand supplied air respirator w/ escape SCBA. The highest available level of respiratory, skin and eye protection.	EN-324-HW220-Z1A 1/20/2012	\$54.79	\$72.28	\$89.77	H H H H H H D Y
Four 10 hour days may be worked Monday-Thursday with Friday as a straight-time make up day.					
Level B & C protection. B - Pressure demand, full face SCBAEN-324-HW220-Z1B or pressure demand supplied air respirator w/ escape SCBA w/chemical resistant clothing. C - Full face piece, air purifying canister-equipped respirator w/chemical resistant clothing.	1/20/2012	\$53.84	\$70.86	\$87.87	H H H H H H D Y
Four 10 hour days may be worked Monday-Thursday with Friday as a straight-time make up day.					
Level D Coveralls, safety boots, glasses or chemical splash goggles and hard hats.	EN-324-HW220-Z1D 1/20/2012	\$52.54	\$68.91	\$85.27	H H H H H H D Y
Four 10 hour days may be worked Monday-Thursday with Friday as a straight-time make up day.					

Official Request #: 1024
 Requestor: Great Lakes Academy
 Project Description: Academy Multi-Purpose Room - Door Replacement
 Project Number:
 County: Oakland

Official Rate Schedule
 Every contractor and subcontractor shall keep posted
 on the construction site, in a conspicuous place, a copy
 of all prevailing wage and fringe benefit rates
 prescribed in a contract.

Official 2013 Prevailing Wage Rates for State Funded Projects

Issue Date: 8/14/2013

Contract must be awarded by: 11/12/2013

Page 20 of 30

Classification Name Description	Last Updated	Straight Hourly	Time and a Half	Double Time	Overtime Provision
Level D When Capping Landfill Coveralls, safety boots, glasses or chemical splash goggles and hard hats.	EN-324-HW220-Z1DCL 1/20/2012	\$52.29	\$68.53	\$84.77	H H H H H H H D Y

Four 10 hour days may be worked Monday-Thursday with Friday as a straight-time make up day.

Operating Engineer Hazardous Waste Regular Crane, Job Mechanic, Dragline Operator, Boom Truck Operator, Power Shovel Operator and Concrete Pump with boom

Level D When Capping Landfill Coveralls, safety boots, glasses or chemical splash goggles and hard hats.	EN-324-HWRC-Z1DCL 1/20/2012	\$49.69	\$64.63	\$79.57	H H H H H H H D Y
--	--------------------------------	---------	---------	---------	-------------------

Four 10 hour days may be worked Monday-Thursday with Friday as a straight-time make up day.

Operating Engineer Hazardous Waste Regular Crane, Job Mechanic, Dragline Operator, Boom Truck Operator, Power Shovel Operator and Concrete Pump with Boom Operator

Level D - Coveralls, safety boots, glasses or chemical splash goggles and hard hats.	EN-324-HWRC-Z1D 1/20/2012	\$50.56	\$65.94	\$81.31	H H H H H H H D Y
--	------------------------------	---------	---------	---------	-------------------

Four 10 hour days may be worked Monday-Thursday with Friday as a straight-time make up day.

Operating Engineer Hazardous Waste Regular Crane, Job Mechanic, Dragline Operator, Boom Truck Operator, Power Shovel Operator and Concrete Pump with booms

Level B & C protection. B - Pressure demand, full face SCBAEN-324-HWRC-Z1B or pressure demand supplied air respirator w/ escape SCBA w/chemical resistant clothing. C - Full face piece, air purifying canister-equipped respirator w/chemical resistant clothing.	EN-324-HWRC-Z1B 1/20/2012	\$51.86	\$67.89	\$83.91	H H H H H H H D Y
--	------------------------------	---------	---------	---------	-------------------

Four 10 hour days may be worked Monday-Thursday with Friday as a straight-time make up day.

Operating Engineer Hazardous Waste Regular Crane, Job Mechanic, Dragline Operator, Boom Truck Operator, Power Shovel Operators and Concrete Pump with booms

Level A - Fully encapsulating chemical resistant suit w/ pressure demand, full face piece SCBA or pressure demand supplied air respirator w/ escape SCBA. The highest available level of respiratory, skin and eye protection.	EN-324-HWRC-Z1A 1/20/2012	\$52.81	\$69.31	\$85.81	H H H H H H H D Y
--	------------------------------	---------	---------	---------	-------------------

Four 10 hour days may be worked Monday-Thursday with Friday as a straight-time make up day.

Official Request #: 1024
 Requestor: Great Lakes Academy
 Project Description: Academy Multi-Purpose Room - Door Replacement
 Project Number:
 County: Oakland

Official Rate Schedule
 Every contractor and subcontractor shall keep posted on the construction site, in a conspicuous place, a copy of all prevailing wage and fringe benefit rates prescribed in a contract.

Official 2013 Prevailing Wage Rates for State Funded Projects

Issue Date: 8/14/2013

Contract must be awarded by: 11/12/2013

Page 21 of 30

Classification Name Description	Last Updated	Straight Hourly	Time and a Half	Double Time	Overtime Provision
Operating Engineer Steel Work Forklift, 1 Drum Hoist	EN-324-ef 6/17/2013	\$57.11	\$75.12	\$93.13	H H D H H D D Y
Crane w/ 120' boom or longer	EN-324-SW120 6/14/2013	\$59.81	\$79.17	\$98.53	H H D H H D D Y
Crane w/ 120' boom or longer w/ Oiler	EN-324-SW120-O 6/14/2013	\$60.81	\$80.67	\$100.53	H H D H H D D Y
Crane w/ 140' boom or longer	EN-324-SW140 6/14/2013	\$60.99	\$80.94	\$100.89	H H D H H D D Y
Crane w/ 140' boom or longer W/ Oiler	EN-324-SW140-O 6/14/2013	\$61.99	\$82.44	\$102.89	H H D H H D D Y
Boom & Jib 220' or longer	EN-324-SW220 6/14/2013	\$61.26	\$81.35	\$101.43	H H D H H D D Y
Crane w/ 220' boom or longer w/ Oiler	EN-324-SW220-O 6/14/2013	\$62.26	\$82.85	\$103.43	H H D H H D D Y
Boom & Jib 300' or longer	EN-324-SW300 6/14/2013	\$62.76	\$83.60	\$104.43	H H D H H D D Y
Crane w/ 300' boom or longer w/ Oiler	EN-324-SW300-O 6/14/2013	\$63.76	\$85.10	\$106.43	H H D H H D D Y
Boom & Jib 400' or longer	EN-324-SW400 6/14/2013	\$64.26	\$85.85	\$107.43	H H D H H D D Y
Crane w/ 400' boom or longer w/ Oiler	EN-324-SW400-O 6/14/2013	\$65.26	\$87.35	\$109.43	H H D H H D D Y
Crane Operator, Job Mechanic, 3 Drum Hoist & Excavator	EN-324-SWCO 6/17/2013	\$59.45	\$78.63	\$97.81	H H D H H D D Y

Apprentice Rates:

0-999 hours	\$47.09	\$60.51	\$73.94
1,000-1,999 hours	\$49.01	\$63.40	\$77.78
2,000-2,999 hours	\$50.93	\$66.28	\$81.62
3,000-3,999 hours	\$52.85	\$69.16	\$85.46
4,000-4,999 hours	\$54.76	\$72.02	\$89.28
5,000 hours	\$56.68	\$74.91	\$93.12

Official Request #: 1024

Requestor: Great Lakes Academy

Project Description: Academy Multi-Purpose Room - Door Replacement

Project Number:

County: Oakland

Official Rate Schedule

Every contractor and subcontractor shall keep posted on the construction site, in a conspicuous place, a copy of all prevailing wage and fringe benefit rates prescribed in a contract.

Official 2013 Prevailing Wage Rates for State Funded Projects

Issue Date: 8/14/2013

Contract must be awarded by: 11/12/2013

Page 22 of 30

Classification		Last Updated	Straight Hourly	Time and a Half	Double Time	Overtime Provision
Name	Description					
Crane w/ Oiler	EN-324-SWCO-O	6/17/2013	\$60.45	\$80.13	\$99.81	H H D H H H D D Y
Compressor or Welder Operator	EN-324-SWCW	6/17/2013	\$52.00	\$67.46	\$82.91	H H D H H H D D Y
Hoisting Operator, 2 Drum Hoist, & Rubber Tire Backhoe	EN-324-SWHO	6/17/2013	\$58.81	\$77.67	\$96.53	H H D H H H D D Y
Oiler	EN-324-SWO	6/17/2013	\$50.59	\$65.34	\$80.09	H H D H H H D D Y
Tower Crane & Derrick where work is 50' or more above first level	EN-324-SWTD50	6/14/2013	\$60.54	\$80.27	\$99.99	H H D H H H D D Y
Tower Crane & Derrick 50' or more w/ Oiler where work station is 50' or more above first level	EN-324-SWTD50-O	6/14/2013	\$61.54	\$81.77	\$101.99	H H D H H H D D Y
Operating Engineer Underground Class I Equipment	EN-324A1-UC1	1/16/2013	\$50.34	\$65.33	\$80.32	H H H H H H H D Y
Apprentice Rates:						
0-999 hours			\$40.75	\$51.25	\$61.74	
1,000-1,999 hours			\$42.24	\$53.48	\$64.72	
2,000-2,999 hours			\$43.75	\$55.75	\$67.74	
3,000-3,999 hours			\$45.24	\$57.98	\$70.72	
4,000-4,999 hours			\$46.74	\$60.23	\$73.72	
5,000-5,999 hours			\$48.25	\$62.50	\$76.74	
Class II Equipment	EN-324A1-UC2	1/16/2013	\$45.61	\$58.24	\$70.86	H H H H H H H D Y
Class III Equipment	EN-324A1-UC3	1/16/2013	\$44.88	\$57.14	\$69.40	H H H H H H H D Y
Class IV Equipment	EN-324A1-UC4	1/16/2013	\$44.31	\$56.29	\$68.26	H H H H H H H D Y
Master Mechanic	EN-324A1-UMM	1/16/2013	\$50.59	\$65.71	\$80.82	H H H H H H H D Y

Official Request #: 1024

Requestor: Great Lakes Academy

Project Description: Academy Multi-Purpose Room - Door Replacement

Project Number:

County: Oakland

Official Rate Schedule

Every contractor and subcontractor shall keep posted on the construction site, in a conspicuous place, a copy of all prevailing wage and fringe benefit rates prescribed in a contract.

Official 2013 Prevailing Wage Rates for State Funded Projects

Issue Date: 8/14/2013

Contract must be awarded by: 11/12/2013

Page 23 of 30

Classification	Name	Description	Last Updated	Straight Hourly	Time and a Half	Double Time	Overtime Provision
----------------	------	-------------	--------------	-----------------	-----------------	-------------	--------------------

Painter

Painter (8 hours of repaint work performed on Sunday shall be paid time & one half rate)	PT-22-P	6/18/2012	\$41.32	\$53.78	\$66.23	H H D H D D D D Y
--	---------	-----------	---------	---------	---------	-------------------

Four 10s allowed Monday-Thursday with Friday makeup day if job down due to weather, holiday or other conditions beyond the control of the employer.

Apprentice Rates:

First 6 months	\$28.87	\$35.10	\$41.33
Second 6 months	\$32.60	\$40.69	\$48.79
Third 6 months	\$33.85	\$42.57	\$51.29
Fourth 6 months	\$35.09	\$44.43	\$53.77
Fifth 6 months	\$36.34	\$46.31	\$56.27
Final 6 months	\$37.58	\$48.17	\$58.75

Pipe and Manhole Rehab

General Laborer for rehab work or normal cleaning and cctv work-top man, scaffold man, CCTV assistant, jetter-vac assistant	TM247	10/15/2012	\$27.20	\$36.70	H H H H H H H H N
---	-------	------------	---------	---------	-------------------

Tap cutter/CCTV Tech/Grout Equipment Operator: unit driver and operator of CCTV; grouting equipment and tap cutting equipment	TM247-2	10/15/2012	\$31.70	\$43.45	H H H H H H H H N
---	---------	------------	---------	---------	-------------------

CCTV Technician/Combo Unit Operator: unit driver and operator of cctv unit or combo unit in connection with normal cleaning and televising work	TM247-3	10/15/2012	\$30.45	\$41.57	H H H H H H H H N
---	---------	------------	---------	---------	-------------------

Boiler Operator: unit driver and operator of steam/water heater units and all ancillary equipment associated	TM247-4	10/15/2012	\$32.20	\$44.20	H H H H H H H H N
--	---------	------------	---------	---------	-------------------

Combo Unit driver & Jetter-Vac Operator	TM247-5	10/15/2012	\$32.20	\$44.20	H H H H H H H H N
---	---------	------------	---------	---------	-------------------

Pipe Bursting & Slip-lining Equipment Operator	TM247-6	10/15/2012	\$33.20	\$45.70	H H H H H H H H N
--	---------	------------	---------	---------	-------------------

Official Request #: 1024
 Requestor: Great Lakes Academy
 Project Description: Academy Multi-Purpose Room - Door Replacement
 Project Number:
 County: Statewide

Official Rate Schedule

Every contractor and subcontractor shall keep posted on the construction site, in a conspicuous place, a copy of all prevailing wage and fringe benefit rates prescribed in a contract.

Official 2013 Prevailing Wage Rates for State Funded Projects

Issue Date: 8/14/2013

Contract must be awarded by: 11/12/2013

Page 24 of 30

Classification Name Description	Last Updated	Straight Hourly	Time and a Half	Double Time	Overtime Provision
Pipefitter Pipefitter	PF-636 6/26/2013	\$65.63	\$86.83	\$104.03	H H D H D D D D Y
Apprentice Rates:					
1st & 2nd periods		\$26.93	\$35.28	\$42.28	
3rd period		\$28.93	\$38.28	\$46.28	
4th period		\$30.18	\$40.16	\$48.78	
5th period		\$31.43	\$42.03	\$51.28	
6th period		\$32.68	\$43.90	\$53.78	
7th period		\$33.93	\$45.78	\$56.28	
8th period		\$34.93	\$47.28	\$58.28	
9th period		\$35.93	\$48.78	\$60.28	
10th period		\$37.36	\$50.92	\$63.14	
 Plasterer Plasterer	 BR1P 11/1/2012	 \$45.04	 \$67.56	 \$90.08	 H H H H H H H D N
Apprentice Rates:					
1st 6 months		\$32.11	\$48.17	\$64.22	
2nd 6 months		\$33.40	\$50.10	\$66.80	
3rd 6 months		\$34.69	\$52.04	\$69.38	
4th 6 months		\$37.28	\$55.92	\$74.56	
5th 6 months		\$39.87	\$59.81	\$79.74	
6th 6 months		\$42.45	\$63.68	\$84.90	
 Plasterer	 PL67 9/8/2010	 \$44.72	 \$60.11	 \$75.50	 H H H X D D D D N
Apprentice Rates:					
1st 6 months		\$29.33	\$37.02	\$44.72	
2nd 6 months		\$30.87	\$39.34	\$47.80	
3rd 6 months		\$32.41	\$41.64	\$50.88	
4th 6 months		\$35.49	\$46.26	\$57.04	
5th 6 months		\$38.56	\$51.16	\$63.76	
6th 6 months		\$41.64	\$55.49	\$69.34	

Official Request #: 1024
 Requestor: Great Lakes Academy
 Project Description: Academy Multi-Purpose Room - Door Replacement
 Project Number:
 County: Oakland

Official Rate Schedule
 Every contractor and subcontractor shall keep posted on the construction site, in a conspicuous place, a copy of all prevailing wage and fringe benefit rates prescribed in a contract.

Official 2013 Prevailing Wage Rates for State Funded Projects

Issue Date: 8/14/2013

Contract must be awarded by: 11/12/2013

Page 25 of 30

Classification		Last Updated	Straight Hourly	Time and a Half	Double Time	Overtime Provision
Name	Description					
Plumber						
Plumber	PL-98	7/18/2013	\$64.45	\$84.87	\$101.29	H H D H D D D D Y
	Apprentice Rates:					
	Period 1		\$19.93	\$26.43	\$32.93	
	Period 2		\$23.90	\$31.40	\$38.90	
	Period 3		\$30.60	\$39.19	\$47.77	
	Period 4		\$31.23	\$40.13	\$49.03	
	Period 5		\$32.39	\$41.87	\$51.35	
	Period 6		\$33.54	\$43.59	\$53.65	
	Period 7		\$34.69	\$45.32	\$55.95	
	Period 8		\$35.86	\$47.07	\$58.29	
	Period 9		\$37.01	\$48.80	\$60.59	
	Period 10		\$38.16	\$50.53	\$62.89	
Roofer						
Commercial Roofer	RO-149-WOM	8/18/2008	\$48.46	\$62.29	\$76.62	H H D H H H D D N
Straight time is not to exceed ten (10) hours per day or forty (40) hours per week.						
	Apprentice Rates:					
	Apprentice 1		\$32.62	\$39.86	\$48.04	
	Apprentice 2		\$36.80	\$44.80	\$53.30	
	Apprentice 3		\$38.22	\$46.93	\$56.14	
	Apprentice 4		\$39.25	\$48.48	\$58.20	
	Apprentice 5		\$40.47	\$50.30	\$60.64	
	Apprentice 6		\$41.87	\$52.40	\$63.44	
Sewer Relining						
Class I-Operator of audio visual CCTV system including remote in-ground cutter and other equipment used in conjunction with CCTV system.	SR-I	3/27/2013	\$42.07	\$56.90	\$71.72	H H H H H H H D N
Class II-Operator of hot water heaters and circulation system; water jetters; and vacuum and mechanical debris removal systems and those assisting.	SR-II	3/27/2013	\$40.54	\$54.60	\$68.66	H H H H H H H D N

Official Request #: 1024

Requestor: Great Lakes Academy

Project Description: Academy Multi-Purpose Room - Door Replacement

Project Number:

County: Statewide

Official Rate Schedule

Every contractor and subcontractor shall keep posted on the construction site, in a conspicuous place, a copy of all prevailing wage and fringe benefit rates prescribed in a contract.

Official 2013 Prevailing Wage Rates for State Funded Projects

Issue Date: 8/14/2013

Contract must be awarded by: 11/12/2013

Page 26 of 30

Classification Name Description	Last Updated	Straight Hourly	Time and a Half	Double Time	Overtime Provision
Sheet Metal Worker					
Sheet Metal Worker A 4 10 schedule may be worked, 4 consecutive days Monday thru Friday.	SHM-80 8/1/2013	\$60.77	\$77.68	\$94.59	H H D X H H H D Y
Apprentice Rates:					
1st & 2nd Periods Indentured after 6-1-11		\$38.12	\$45.73	\$53.34	
3rd & 4th Periods Indentured after 6-1-11		\$39.82	\$48.28	\$56.74	
5th & 6th Periods Indentured after 6-1-11		\$41.50	\$50.80	\$60.10	
7th & 8th Periods Indentured after 6-1-11		\$43.19	\$53.34	\$63.48	
9th & 10th Periods Indentured before 6-1-11		\$50.86	\$63.38	\$75.90	
Architectural Sheet Metal Worker	SHM-80-SD 2/15/2012	\$40.85	\$53.00	\$65.15	H H H H H H H D Y
Sprinkler Fitter					
Sprinkler Fitter 4 ten hour days allowed Monday-Friday Double time pay due after 12 hours worked M-F	SP 704 8/8/2013	\$63.42	\$84.38	\$105.33	H H D H D D D D Y
Apprentice Rates:					
1st Period		\$27.77	\$36.15	\$44.53	
2nd Period		\$40.37	\$49.80	\$59.23	
3rd Period		\$42.47	\$52.95	\$63.43	
4th Period		\$44.56	\$56.09	\$67.61	
5th Period		\$46.66	\$59.23	\$71.81	
6th Period		\$48.75	\$62.37	\$75.99	
7th Period		\$50.85	\$65.52	\$80.19	
8th Period		\$52.94	\$68.65	\$84.37	
9th Period		\$55.04	\$71.81	\$88.57	
10th Period		\$57.13	\$74.94	\$92.75	

Official Request #: 1024
 Requestor: Great Lakes Academy
 Project Description: Academy Multi-Purpose Room - Door Replacement
 Project Number:
 County: Oakland

Official Rate Schedule
 Every contractor and subcontractor shall keep posted on the construction site, in a conspicuous place, a copy of all prevailing wage and fringe benefit rates prescribed in a contract.

Official 2013 Prevailing Wage Rates for State Funded Projects

Issue Date: 8/14/2013

Contract must be awarded by: 11/12/2013

Page 27 of 30

Classification	Last	Straight	Time and	Double	Overtime
Name Description	Updated	Hourly	a Half	Time	Provision

Terrazzo

Terrazzo Finisher	BR1-TRF	\$42.89	\$53.82	\$64.75	H H D H D D D D Y
A 4 ten workweek may be worked Monday thru Thursday or Tuesday thru Friday.					
	11/26/2012				

Apprentice Rates:

Level 1	\$18.57	\$24.54	\$30.52
Level 2	\$19.74	\$26.30	\$32.86
Level 3	\$26.34	\$33.11	\$39.87
Level 4	\$27.77	\$35.25	\$42.73
Level 5	\$29.25	\$36.95	\$44.65
Level 6	\$30.83	\$38.92	\$47.02
Level 7	\$32.48	\$40.65	\$48.82
Level 8	\$33.93	\$42.50	\$51.08

Terrazzo Worker	BR1-TRW	\$48.50	\$62.24	\$75.97	H H D H D D D D Y
A 4 ten workweek may be worked Monday thru Thursday or Tuesday thru Friday.					
	11/26/2012				

Apprentice Rates:

Level 1	\$24.52	\$31.83	\$39.13
Level 2	\$27.50	\$35.59	\$43.67
Level 3	\$32.59	\$40.95	\$49.31
Level 4	\$35.26	\$44.56	\$53.86
Level 5	\$37.47	\$47.04	\$56.61
Level 6	\$41.04	\$52.32	\$63.60
Level 7	\$41.69	\$53.15	\$64.61
Level 8	\$42.60	\$54.51	\$66.43

Tile

Tile Finisher	BR1-TF	\$42.43	\$53.13	\$63.83	H H D H D D D D Y
A 4 ten workweek may be worked Monday thru Thursday or Tuesday thru Friday.					
	11/26/2012				

Apprentice Rates:

Level 1	\$18.57	\$24.54	\$30.52
Level 2	\$19.74	\$26.30	\$32.86
Level 3	\$26.34	\$33.11	\$39.87
Level 4	\$27.77	\$35.25	\$42.73
Level 5	\$29.25	\$36.95	\$44.65
Level 6	\$30.83	\$38.92	\$47.02
Level 7	\$32.48	\$40.65	\$48.82
Level 8	\$33.93	\$42.50	\$51.08

Official Request #: 1024

Requestor: Great Lakes Academy

Project Description: Academy Multi-Purpose Room - Door Replacement

Project Number:

County: Oakland

Official Rate Schedule

Every contractor and subcontractor shall keep posted on the construction site, in a conspicuous place, a copy of all prevailing wage and fringe benefit rates prescribed in a contract.

Official 2013 Prevailing Wage Rates for State Funded Projects

Issue Date: 8/14/2013

Contract must be awarded by: 11/12/2013

Page 28 of 30

Classification Name Description	Last Updated	Straight Hourly	Time and a Half	Double Time	Overtime Provision
Tile Layer A 4 ten workweek may be worked Monday thru Thursday or Tuesday thru Friday.	BR1-TL 11/26/2012	\$48.45	\$62.16	\$75.87	H H D H D D D D Y
Apprentice Rates:					
Level 1		\$24.52	\$31.83	\$39.13	
Level 2		\$27.50	\$35.59	\$43.67	
Level 3		\$32.59	\$40.95	\$49.31	
Level 4		\$35.26	\$44.56	\$53.86	
Level 5		\$37.47	\$47.04	\$56.61	
Level 6		\$41.04	\$52.32	\$63.60	
Level 7		\$41.69	\$53.15	\$64.61	
Level 8		\$42.60	\$54.51	\$66.43	
Truck Driver on all trucks of 8 cubic yard capacity or less (except dump trucks of 8 cubic yard capacity or over, tandem axle trucks, transit mix and semis, euclid type equipment, double bottoms and low boys)	TM-RB1 8/8/2013	\$41.92	\$37.85		H H H H H H H H Y
of all trucks of 8 cubic yard capacity or over	TM-RB1A 8/8/2013	\$41.30	\$38.00		H H H H H H H H Y
on euclid type equipment	TM-RB1B 8/8/2013	\$41.45	\$38.23		H H H H H H H H Y
Underground Laborer Open Cut, Class I Construction Laborer	LAUC-Z1-1 1/16/2013	\$36.77	\$47.38	\$57.99	H H H H H H H D Y
Apprentice Rates:					
0-1,000 work hours		\$31.99	\$40.21	\$48.43	
1,001-2,000 work hours		\$32.95	\$41.65	\$50.35	
2,001-3,000 work hours		\$33.90	\$43.08	\$52.25	
3,001-4,000 work hours		\$35.81	\$45.94	\$56.07	

Official Request #: 1024
 Requestor: Great Lakes Academy
 Project Description: Academy Multi-Purpose Room - Door Replacement
 Project Number:
 County: Oakland

Official Rate Schedule
 Every contractor and subcontractor shall keep posted
 on the construction site, in a conspicuous place, a copy
 of all prevailing wage and fringe benefit rates
 prescribed in a contract.

Official 2013 Prevailing Wage Rates for State Funded Projects

Issue Date: 8/14/2013

Contract must be awarded by: 11/12/2013

Page 29 of 30

Classification Name Description	Last Updated	Straight Hourly	Time and a Half	Double Time	Overtime Provision
Underground Laborer Open Cut, Class II					
Mortar and material mixer, concrete form man, signal man, well point man, manhole, headwall and catch basin builder, guard rail builders, headwall, seawall, breakwall, dock builder and fence erector.	LAUC-Z1-2 1/16/2013	\$36.88	\$47.55	\$58.21	H H H H H H D Y
Apprentice Rates:					
0-1,000 work hours		\$32.07	\$40.33	\$48.59	
1,001-2,000 work hours		\$33.03	\$41.77	\$50.51	
2,001-3,000 work hours		\$34.00	\$43.22	\$52.45	
3,001-4,000 work hours		\$35.92	\$46.10	\$56.29	
Underground Laborer Open Cut, Class III					
Air, gasoline and electric tool operator, vibrators operator, drillers, pump man, tar kettle operator, bracers, rodger, reinforced steel or mesh man (e.g. wire mesh, steel mats, dowel bars, etc.), cement finisher, welder, pipe jacking and boring man, wagon drill and air track operator and concrete saw operator (under 40 h.p.), windlass and tugger man, and directional boring man.	LAUC-Z1-3 1/16/2013	\$36.93	\$47.62	\$58.31	H H H H H H D Y
Apprentice Rates:					
0-1,000 work hours		\$32.11	\$40.39	\$48.67	
1,001-2,000 work hours		\$33.07	\$41.83	\$50.59	
2,001-3,000 work hours		\$34.04	\$43.28	\$52.53	
3,001-4,000 work hours		\$35.97	\$46.18	\$56.39	
Underground Laborer Open Cut, Class IV					
Trench or excavating grade man.	LAUC-Z1-4 1/16/2013	\$37.01	\$47.74	\$58.47	H H H H H H D Y
Apprentice Rates:					
0-1,000 work hours		\$32.17	\$40.48	\$48.79	
1,001-2,000 work hours		\$33.14	\$41.94	\$50.73	
2,001-3,000 work hours		\$34.11	\$43.39	\$52.67	
3,001-4,000 work hours		\$36.04	\$46.28	\$56.53	
Underground Laborer Open Cut, Class V					
Pipe Layer	LAUC-Z1-5 1/16/2013	\$37.07	\$47.83	\$58.59	H H H H H H D Y
Apprentice Rates:					
0-1,000 work hours		\$32.21	\$40.54	\$48.87	
1,001-2,000 work hours		\$33.19	\$42.01	\$50.83	
2,001-3,000 work hours		\$34.16	\$43.46	\$52.77	
3,001-4,000 work hours		\$36.10	\$46.38	\$56.65	

Official Request #: 1024
 Requestor: Great Lakes Academy
 Project Description: Academy Multi-Purpose Room - Door Replacement
 Project Number:
 County: Oakland

Official Rate Schedule
 Every contractor and subcontractor shall keep posted on the construction site, in a conspicuous place, a copy of all prevailing wage and fringe benefit rates prescribed in a contract.

Official 2013 Prevailing Wage Rates for State Funded Projects

Issue Date: 8/14/2013

Contract must be awarded by: 11/12/2013

Page 30 of 30

Classification Name Description	Last Updated	Straight Hourly	Time and a Half	Double Time	Overtime Provision
Underground Laborer Open Cut, Class VI					
Grouting man, top man assistant, audio visual television operations and all other operations in connection with closed circuit television inspection, pipe cleaning and pipe relining work and the installation and repair of water service pipe and appurtenances.	LAUC-Z1-6 1/16/2013	\$34.52	\$44.01	\$53.49	H H H H H H H D Y

Apprentice Rates:

0-1,000 work hours	\$30.30	\$37.68	\$45.05
1,001-2,000 work hours	\$31.15	\$38.95	\$46.75
2,001-3,000 work hours	\$31.99	\$40.21	\$48.43
3,001-4,000 work hours	\$33.68	\$42.74	\$51.81

Underground Laborer Open Cut, Class VII

Restoration laborer, seeding, sodding, planting, cutting, mulching and topsoil grading and the restoration of property such as replacing mail boxes, wood chips, planter boxes, flagstones etc.	LAUC-Z1-7 1/16/2013	\$31.14	\$38.94	\$46.73	H H H H H H H D Y
---	----------------------------	---------	---------	---------	-------------------

Apprentice Rates:

0-1,000 work hours	\$27.77	\$33.88	\$39.99
1,001-2,000 work hours	\$28.44	\$34.88	\$41.33
2,001-3,000 work hours	\$29.12	\$35.90	\$42.69
3,001-4,000 work hours	\$30.47	\$37.93	\$45.39

Official Request #: 1024
 Requestor: Great Lakes Academy
 Project Description: Academy Multi-Purpose Room - Door Replacement
 Project Number:
 County: Oakland

Official Rate Schedule

Every contractor and subcontractor shall keep posted on the construction site, in a conspicuous place, a copy of all prevailing wage and fringe benefit rates prescribed in a contract.

SECTION 01 11 00

SUMMARY OF THE WORK

PART 1: GENERAL

1.01 RELATED DOCUMENTS

- A. Drawings, Details of Construction and general provisions of Contract, including General and Supplementary Conditions and Division-1 Specification Sections, apply to work specified in this section.

1.02 SUMMARY

- A. This Section includes the following:

1. Work covered by the Contract Documents.
2. Use of premises.
3. Owner's occupancy requirements.
4. Punchlist Completion.
5. Work restrictions.
6. Specification formats and conventions.

- B. Related Sections include the following:

1. Division 1 Section "Temporary Facilities and Controls" for limitations and procedures governing temporary use of Owner's facilities.

1.03 PROJECT IDENTIFICATION

- A. Project Name: Great Lake Academy Door Replacement, Pontiac, Michigan.
- B. Owner: Great Lake Academy
46312 Woodward Avenue
Pontiac, Michigan 48342
- C. Architect: Wold Architects and Engineers
333 West Seventh Street, Suite 320
Royal Oak, Michigan 48067

1.04 SUMMARY OF THE WORK

Briefly and without force and effect upon the Contract Documents, the Work of this single prime Contract can be summarized as follows:

- A. Work under this Contract includes:

1. Building Enclosure
 - a. Galvanized hollow metal doors and frames.
2. Interior Finishes
 - a. Wall finishes of paint and plaster.
 - b. HM doors and frames, wood doors, hardware, glazing, lockers.

3. Keep Architect fully informed about progress of the work, performance of the work and potential problems.

1.05 USE OF PREMISES

- A. General: Contractor shall have limited use of premises for construction operations as indicated on Drawings by the Contract limits.
 1. Contractor is to visit site and be familiar with existing conditions. Contractor will be required to accept existing conditions on site prior to mobilizing.
- B. Use of Site: Limit use of premises to work in areas indicated. Do not disturb portions of Project site beyond areas in which the Work is indicated.
 1. Allow for Owner occupancy of Project site and use by the public.
 2. Driveways and Entrances: Keep driveways, loading areas, and entrances serving premises clear and available to Owner, Owner's employees, and emergency vehicles at all times. Do not use these areas for parking or storage of materials.
 - a. Schedule deliveries to minimize use of driveways and entrances.
 - b. Schedule deliveries to minimize space and time requirements for storage of materials and equipment on-site.
 3. Public Streets: Maintain clear of automobile parking, equipment or material storage unless arrangements have been made with the appropriate jurisdiction.
 4. Lock automotive type vehicles, such as passenger cars and trucks and other mechanized or motorized construction equipment, when parked and unattended, so as to prevent unauthorized use. Do not leave such vehicles or equipment unattended with the motor running or the ignition key in place.
- C. Do not allow construction waste and debris to accumulate; remove debris as it accumulates and, unless specified otherwise, dispose of legally off-site.
- D. Conform to City's noise control regulations, including limited hours of construction operations.
- E. Use of Existing Building: Maintain existing building in a weathertight condition throughout construction period. Repair damage caused by construction operations. Protect building and its occupants during construction period.

1.06 LAYING OUT WORK

- A. Locate all general reference points. Where dimensions or observed scope of work differ substantially from Drawings, notify Architect for decision.
- B. Lay out Work from the reference points furnished and be responsible for all lines, elevations, and measurements inside workspace. Exercise proper precaution to verify figures shown on Drawings before laying out work and will be held responsible for any error resulting from his failure to exercise such precaution.
- C. Hire the services of a locator company to locate all privately owned utilities that may be disturbed by construction operations.
- D. Coordinate utility connections with municipality/utility company in which project is being constructed.

1.07 OWNER'S OCCUPANCY REQUIREMENTS

- A. Full Owner Occupancy: Owner will occupy portions of the site and existing building during entire construction period. Cooperate with Owner during construction operations to minimize conflicts and facilitate Owner usage. Perform the Work so as not to interfere with Owner's day-to-day operations. Maintain existing exits, unless otherwise indicated.
1. Maintain access to existing walkways, corridors, and other adjacent occupied or used facilities. Do not close or obstruct walkways, corridors, or other occupied or used facilities without written permission from Owner and authorities having jurisdiction.
 2. Provide not less than 72 hours' notice to Owner of activities that will affect Owner's operations.
- A. Owner Occupancy of Completed Areas of Construction: Owner reserves the right to place and install equipment in completed areas of building, before Substantial Completion, provided such occupancy does not interfere with completion of the Work. Such placement of equipment and partial occupancy shall not constitute acceptance of the total Work.
1. Architect will prepare a punchlist for each specific portion of the Work to be occupied before Owner move in.
 2. Obtain a temporary Certificate of Occupancy if required from authorities having jurisdiction before Owner occupancy to install furnishings and equipment.

1.08 WORK RESTRICTIONS

- A. The Contractor's access to and use of the site/facility for completion of work is typically evenings, weekends, and during school breaks and shall be subject to the following:
1. Should the Contractor have additional work to complete after January 3, 2014 including punchlist work within the existing building, continuous use of facilities is required by the Owner during regular business hours of 8:00 a.m. to 3:30 p.m. Work in those areas shall occur during evenings and weekends and shall be cleaned and available for use the following school or business day.
 2. The building is open between the hours of 6:00 a.m. and 11:30 p.m. Hours of operation are 8:00 a.m. to 3:30 p.m. and no work shall be performed in occupied areas during these times.
 - a. Coordinate schedule with Owner's designated building representative.
 - b. Thanksgiving break occurs between the dates of November 25, 2013 to November 29, 2013. Work in circulation areas shall be managed to allow for continuous use of the facility. Provide dust control in these areas. The school will work around areas under construction.
 - c. Holiday break occurs between the dates of December 23, 2013 to January 3, 2013.
 3. The Contractor will/may begin work after August 30, 2013, continuous use of facilities is required by the Owner during regular business hours of 6:00 a.m. to 3:30 p.m. Work shall occur during evenings and weekends and shall be cleaned and available for use the following school or business day. The building will be open for construction operations 3:30 p.m. to 11:30 p.m.
 4. The Contractor shall:
 - a. Maintain access, building utilities, and services to allow full and free use of the facility during this time. All temporary conditions, re-routing of services, utilities and/or power are the Contractor's responsibility.

- b. Coordinate access and storage of materials and equipment with the Owner's designated building representative. To the fullest extent possible provide for normal building operation, and the safety of the building's occupants. Work in areas that occur during evenings and weekends shall be cleaned and available for use the following business day.
 - 1) *On-site storage of materials, equipment, tools, and dumpsters shall be prohibited. Exceptions may be made under the following conditions:*
 - a. *During normally scheduled periods when school will be in session and work will occur over the designated evening hours, the above provisions are in full effect if there is school the following day. Adjustments to the above provisions are allowable if coordinated with the Owner and if the building is intended to be open, but school is not in session the following day.*
 - b. *During designated Thanksgiving and Holiday breaks, adjustments to the above provisions are allowable if coordinated with the Owner and if the building is intended to be open, but school is not in session the following day. The intent is that materials, equipment, tools, and dumpsters will be allowed during these breaks provided that the locations are coordinated with the Owner prior to work being scheduled, and that when school is back schedule to be in session all items be removed before normal business hours the following day.*
 - c. Coordinate schedule with the Owner's designated building representative.
- B. Existing Utility Interruptions: Do not interrupt utilities serving facilities occupied by Owner or others unless permitted under the following conditions and then only after arranging to provide temporary utility services according to requirements indicated:
 - 1. Notify Architect not less than seven (7) days in advance of proposed utility interruptions.
 - 2. Do not proceed with utility interruptions without Architect's or Owner's permission.

1.09 SPECIFICATION FORMATS AND CONVENTIONS

- A. Specification Format: The Specifications are organized into Division and Sections using the 49-division format and CSI/CSC's "Master Format" numbering system.
 - 1. Division 1: Sections in Division 1 govern the execution of the Work of all Sections in the Specifications.
- B. Specification Content: The Specifications use certain conventions for the style of language and the intended meaning of certain terms, words, and phrases when used in particular situations. These conventions are as follows:
 - 1. Abbreviated Language: Language used in the Specifications and other Contract Documents is abbreviated. Words and meanings shall be interpreted as appropriate. Words implied, but not stated, shall be inferred as the sense requires. Singular words shall be interpreted as plural, and plural words shall be interpreted as singular where applicable as the context of the Contract Documents indicates.
 - 2. Imperative mood and streamlined language are generally used in the Specifications. Requirements expressed in the imperative mood are to be performed by Contractor. Occasionally, the indicative or subjunctive mood may be used in the Section Text for clarity to describe responsibilities that must be fulfilled indirectly by Contractor or by others when so noted.
 - a. The words "shall," "shall be," or "shall comply with," depending on the context, are implied where a colon (:) is used within a sentence or phrase.

END OF SECTION 01 11 00

SECTION 08 71 00
FINISH HARDWARE

PART 1: GENERAL

1.01 RELATED DOCUMENTS

- A. Drawings, Details of Construction and general provisions of Contract, including General and Supplementary Conditions and Division-1 Specification Sections, apply to work specified in this section.

1.02 SUMMARY

- A. This Section includes the furnishing of butt hinges and the furnishing and installing of all finish hardware material specified herein, listed in the hardware schedule, or required by the Drawings.
- B. Items of hardware include:
1. Finish hardware
 2. Thresholds and weatherstrip

1.03 RELATED WORK SPECIFIED ELSEWHERE

- A. Section 08 10 00 - Hollow Metal Doors and Frames.

1.04 REFERENCES

- A. Builders' Hardware Manufacturers Assoc., Inc. (BHMA), 60 E. 42nd St., New York, NY 10017.
1. Recommended locations for builders' hardware.
- B. American National Standards Institute, Inc. (ANSI), 1430 Broadway, New York, NY 10018.
1. A115.2 - Specifications for standard steel door and frame preparations for bored cylindrical locks for 1-3/8" and 1-3/4" doors.
- C. National Fire Protection Association, Inc. (NFPA), Battery March Park, Quincy, MA 02269.
1. NFPA 80 - Standard for fire doors and windows.
 2. NFPA 101 - Code for safety to life from fire in buildings and structures.
- D. Underwriters Laboratories, Inc. (UL), 333 Pfingsten Road, Northbrook, IL 60062.
1. Building Materials Directory.
- E. Builders' Hardware Manufacturers Assoc., Inc. (BHMA), 60 E. 42nd Street, New York, NY 10017.
1. Recommended locations for builders' hardware.
- F. Building Codes: International Building Code, Adopted Edition.
1. Include State amendments modifying model codes in jurisdiction where project is constructed.

1.05 QUALITY ASSURANCE

- A. Except where specified in the hardware schedule, furnish products of only one manufacturer for each type of hardware.
- B. Supplier: Company specializing in the builders' hardware industry.
- C. Provide hardware for fire-rated openings conforming to UBC Standard 7-2.
- D. Provide hardware for fire-rated openings conforming in compliance with NFPA 80 1995 Edition.

1.06 REGULATORY REQUIREMENTS

- A. Furnish hardware listed by UL testing agency for all rated openings in conformance with requirements for the class of opening scheduled.
- B. Rating requirements have precedence over this specification where conflict exists.
- C. Furnish and install hardware that is in compliance with American with Disabilities Act of 1990 (ADA) technical standards, and current State Building Code.

1.07 SUBMITTALS

- A. Submit in accordance with Section 01 33 00.
 - 1. Schedules
 - a. Immediately after award of the hardware contract, submit a detailed, vertical type hardware schedule and cut sheets for each type of hardware for approval. On existing buildings field verify existing swings and functions prior to submitting schedule.
 - b. Itemize hardware in the sequence and format established by this specification.
 - 1. List and describe each opening separately; include door number, room designations, degree of swing, and hand.
 - 2. List related details; include dimensions, door and frame material, and other conditions affecting hardware.
 - 3. List all hardware items; include manufacturer's name, quantity, product name, catalog number, size, finish, attachments, and related details where applicable.
 - c. Submit manufactures cut sheets on each type of hardware proposed.
 - d. Resubmit the corrected schedule when required.
 - e. Determine keying requirements by meeting with the Owner coordinated through the Architect, and submit a detailed keying schedule for review; resubmit the corrected schedule when required.
 - 3. Samples: Submit samples of hardware items as may be required by the Architect; identify each sample and indicate the location of subsequent installation in the project.
 - 4. Templates: Furnish a copy of the approved hardware schedule and all pertinent templates or template information to each fabricator of material factory-prepared for the installation of hardware.

5. Include documentation for UL 10C or other approved testing agency stating hardware has passed UBC Standard 7-2.

1.08 DELIVERY, STORAGE AND HANDLING

- A. Deliver hardware to the job site in the manufacturer's original containers that have been marked to correspond with the approved hardware schedule for installation location.
- B. Store hardware in dry surroundings and protect against loss and damage.

PART 2: PRODUCTS

2.01 ACCEPTABLE MANUFACTURERS/MATERIALS

A. Hinges

1. Continuous hinges manufacturers and respective catalog numbers:

Select
SL Series

Ives
224HD Series

- a. Continuous hinges shall be full height pin and barrel type hing providing full height door support up to 600 pounds. Edge mount (unless noted otherwise).
 - b. Hinges shall be constructed of heavy-duty 14-gauge material. The stainless internal pin shall have a diameter of .25 and the exterior barrel diameter of .438.
 - c. Hinge shall be non-handed with symmetrical template hole pattern and factory drilled. Hinge must accept a minimum of 21 fasteners on the door and 21 fasteners on the frame.
 - d. Hinge to be able to carry Warnock Hersey Int. or UL for fire rated doors and frames up to three hours. Note: Fire label for doors and frames should be placed on the header and top rail of rated doors and frames.
 - e. Provide adjusting screws equal to Markar's "AdjustaScrew" for continuous hinges specified as HG-305. Adjustment to be able to correct frame fit problems up to 3/8".
 - f. Provide widethrow type hinges wehere scheduled and/or detailed.
3. When hinges are specified on the hardware schedule, furnish:

B. Exit Devices

1. Manufacturers and respective catalog numbers:

Von Duprin
98

Stanley/Precision Hardware
APEX 2000 Series

2. Furnish exit device series and functions specified in the hardware schedule.
3. Furnish sex bolt attachments for devices specified for mineral core door application.
4. Furnish reinforced cross bars for door over 40" wide.
5. Furnish rod and latch guards on all surface mounted vertical rod exit device, on bottom rods.

6. Vandal Resistant Lever Design: Von Duprin 996L. All exit devices shall be provided with trim designs to match other lever and pull designs used on the project.
7. Removable mullion: KR9954. Provide with cylinder to match building system.
8. Provide cylinder dogging on all non-rate devices. Provide cylinder to match building system.

C. Locks

1. Manufacturers and respective catalog numbers:

<u>Schlage</u>	<u>Sargent</u>	<u>Best</u>
L9000 03N	18-8200 LNJ	45H3H

2. Furnish lock types and functions specified in the hardware schedule, with the following provisions:

a. Strikes:

- 1) Wrought box type for the inactive leaf of pairs of wood doors, or wood frames.
 - 2) Lip length sufficient to protect trim, frame or inactive leaf.
3. Furnish knurled lock knobs or lever handles on doors to stairs other than exit stairs, loading platforms, stages, boiler rooms, and other hazardous locations.
 4. Lever handles must be cast brass, bronze or stainless steel construction and conform to ASNI A117.1.

D. Cylinders: Best

E. Closers

1. Manufacturers and respective catalog numbers:

<u>LCN</u>	<u>Sargent</u>
4011/4111 EDA	281/281P10

2. Where closers are listed in the hardware schedule, furnish 4011/4111 EDA, series unless other functions/series are specified in the hardware groups.
3. Furnish complete with all mounting brackets, drop plates and special shoes as may be required by the door and frame conditions.
4. Furnish through bolt attachments for closers specified for mineral core doors, unless solid wood blocking is provided for attachment.
5. Determine closer size in accordance with manufacturer's recommendations for application on the room side of corridor doors, stair side of stair doors, and interior side of exterior doors.

- F. Kick Plates: Where kick plates are specified in the hardware schedule, furnish 16 gauge, .050" plates, with the following dimensions:

1. Width: 2" less than door width.
4. Height: 8" (unless noted different on door schedule.)

5. All kick plates shall be beveled 4 sides and counter sunk.

G. Floor and Wall Stops and Holders

1. Manufacturers and respective catalog numbers:

	<u>Ives</u>	<u>Hager</u>	<u>Burns</u>
a. Wall bumper	WS407CCV	232W	570
b. Wall stop	WS11X	255W	530

2. Furnish a WS407CCV series wall stop, as applicable, for each door leaf except where wall bumper WS11X, or overhead stops/holders are specified in the hardware schedule.
3. Where wall stops are not applicable, furnish overhead stops as previously specified within this section of the specification.

H. Weathstrips and Jamb Gaskets

1. Manufacturers and respective catalog numbers

	<u>Reese</u>	<u>Pemko</u>	<u>National Guard</u>
a. Weatherstrip	755A	2891APK	700NA
b. Astragal weatherstrip	804	Pair 309	185
c. Sweep	964C	18061CP	B606A
d. Head and Jamb Gasket	797	S88	5050
e. Drip	R201	346	16
f. Jamb sound seal	F499	350CSR	1038

2. Where specified in the hardware groups, furnish the above products unless otherwise details in groups.
3. Furnish 5050 head/jamb gaskets and NGP 9605 edge stile astragals for pairs, at all fire labeled doors whether listed in group or not. *Reese and Pemko equivalents approved based on passing UL 10C, UBC test Standard 7-2.
4. Coordinate with door manufacturer the intumescent fire and smoke material for fire rated openings as required by door and frame manufacturer to comply with UL 10C, UBC test 7-2.

I. Electric Strikes

1. When the term "electric strike" appears on the hardware schedule, provide a complete system including all necessary parts and the following items:
 - a. Von Duprin series #6000, Fail Secure (FS), 24 VDC (verify voltage with Architect before ordering).
 - b. Provide PS 861 BK battery backup with key lock power supply, Standard input 120 VAC at 0.6 amps.
 - c. Provide and install wiring from electric strike to power supply.

2.03 ACCESSORIES AND ATTACHMENTS

- A. Furnish all necessary hardware accessories such as wood or machine screws, bolts, nuts, anchors, toggle bolts, and other fasteners, each of the type, size, material and finish for its intended purpose and each according to the material to which the hardware is being applied.

2.04 FINISH AND BASE METALS

A. Finish and Base Metal:

Exit Devices	US26 on brass or bronze
Locks	US26 on brass or bronze
Closers	Sprayed AL on cast iron or aluminum
Protective Plates	US26 on stainless Steel
Wall Stops	US26 on brass, bronze, or steel
Miscellaneous	US26 on brass or bronze

2.05 KEYING

- A. Furnish two change keys for each lock, six masterkeys for each masterkey set, and two removable core control keys.
- B. Stamp keys with file key number and "Do Not Copy."
- C. Ship masterkeys and control keys to the Owner via registered mail.

PART 3: EXECUTION

3.01 INSTALLATION

- A. Install hardware in accordance with manufacturer's recommendations / instructions, and the adopted Building Code.
- B. Install hardware on UL labeled openings in accordance with manufacturer's requirements, so as to maintain the label.
- C. Install hardware mountable weatherstripping continuous throughout opening prior to installation of other hardware.
- D. Mortise and cut to close tolerance and conceal evidence of cutting in the finished work.
- E. Remove, cover or protect hardware after fitting until paint or other finish is applied; permanently install hardware after finishing operations are complete.
- F. Install closers on the room side of corridor doors, stair side of stairways, and interior side of exterior doors.
- G. Mounting heights:
 - 1. Install hardware at mounting heights conforming to the recommended mounting locations of the Builders' Hardware Manufacturing Association, and the adopted Building Code.
 - 2. Install wall stops WS11X, wall holders WS20X, and magnetic holders to strike near top of doors, but not more than 78" from the finished floor line; install wall stops WS407CVX to engage knobs, levers or pulls.
- H. Install pulls at 40" to top of pull and push bars at 36" above finished floor. Off set pull on exterior door rails to allow access to cylinders.
- I. Deliver to the Owner one complete set of installation and adjustment instructions, and tools as furnished with the hardware.

- J. Before hardware installation, general contractor/construction manager shall coordinate a hardware installation seminar to be conducted on the rough-in of electrical boxes for hardware and the installation of hardware, specifically of locksets, closers/accessibility closers, exit devices, hardware, mountable weatherstrip and overhead stops. Manufacturer's representative of the above products to present seminar. Seminar to be held at the job site and attended by installers of hardware (including low voltage hardware) for aluminum, hollow metal and wood doors. Training to include use of installation manuals, hardware schedule, templates and physical product samples. The architect needs to be informed of the meeting and contractor is to distribute meeting minutes on issues raised at seminar.
- K. Install per door and/or frame manufacturer's supplemental "S" label instructions on fire rated openings.

3.02 ADJUSTING AND CLEANING

- A. At final completion, adjust and test all hardware for function, performance, building code compliance and leave in good operating condition. Panic Hardware device manufacturer's representative to inspect panic hardware installation and provide a report to contractor and architect on items that need correction.
- B. Clean all hardware to restore the original finish.

3.03 PROTECTION

- A. Protect the finished installation until acceptance of the project.
- B. Provide final adjustment or cleaning where necessary.

3.04 HARDWARE SETS

HARDWARE SET NO. 01

EACH TO HAVE:

1	EA	CONT. HINGE	224HD	628	IVE
1	EA	CLASSROOM SECURITY	L9071L 03N	626	SCH
2	EA	MORTISE CYLINDER	INTERCHANGEABLE CORE SFIC	626	
1	EA	CLOSER	(RE-USE EXISTING)		LCN
1	EA	KICK PLATE	8400 10" X 2" LDW B4E	630	IVE
1	EA	WALL STOP	WS407CCV	630	IVE

THE DISTRIBUTOR WILL FIELD VERIFY THE EXISTING FRAME PREPARATIONS AND CONDITIONS FOR COMPATIBILITY WITH THE SPECIFIED HARDWARE. PROVIDE NEW METAL CLOSER COVER.

HARDWARE SET NO. 02

EACH TO HAVE:

1	EA	CONTINUOUS HINGE	SL40HD	628	SEL
1	EA	OFFICE/ENTRY LOCK	L9050L 03N L583-363	626	SCH
1	EA	MORTISE CYLINDER	INTERCHANGEABLE CORE SFIC	626	
1	EA	CLOSER	(RE-USE EXISTING)		LCN
1	EA	KICK PLATE	8400 10" X 2" LDW B4E	630	IVE
1	EA	WALL STOP	WS407CCV	630	IVE

THE DISTRIBUTOR WILL FIELD VERIFY THE EXISTING FRAME PREPARATIONS AND CONDITIONS FOR COMPATIBILITY WITH THE SPECIFIED HARDWARE.

HARDWARE SET NO. 03 – CLASSROOM SECURITY

EACH TO HAVE:

1	EA	CONTINUOUS HINGE	SL40HD	628	SEL
1	EA	CLASSROOM SECURITY	L9071L 03N	626	SCH
2	EA	MORTISE CYLINDER	INTERCHANGEABLE CORE SFIC	626	
1	EA	CLOSER	(RE-USE EXISTING)		LCN
1	EA	KICK PLATE	8400 10" X 2" LDW B4E	630	IVE
1	EA	WALL STOP	WS407CCV	630	IVE

THE DISTRIBUTOR WILL FIELD VERIFY THE EXISTING FRAME PREPARATIONS AND CONDITIONS FOR COMPATIBILITY WITH THE SPECIFIED HARDWARE. PROVIDE NEW METAL CLOSER COVER.

HARDWARE SET NO. 04 (REVISED 08-19-13)

EACH TO HAVE:

1	EA	CONTINUOUS HINGE	SL40HD	628	SEL
1	EA	FIRE EXIT HARDWARE	98-L-F-996-03-SNB	626	VON
±2	EA	RIM CYLINDER	INTERCHANGEABLE CORE SFIC	626	
1	EA	SURFACE CLOSER	4111 EDA	689	LCN
1	EA	KICK PLATE	8400 10" X 2" LDW B4E	630	IVE
1	EA	WALL STOP	WS407CCV	630	IVE

THE DISTRIBUTOR WILL FIELD VERIFY THE EXISTING FRAME PREPARATIONS AND CONDITIONS FOR COMPATIBILITY WITH THE SPECIFIED HARDWARE. PROVIDE NEW METAL CLOSER COVER.

HARDWARE SET NO. 05

EACH TO HAVE:

1	EA	CONT. HINGE	224HD	628	IVE
1	EA	CLASSROOM SECURITY	L9071L 03N	626	SCH
2	EA	MORTISE CYLINDER	INTERCHANGEABLE CORE SFIC	626	
1	EA	SURFACE CLOSER	4111 S-CUSH ST-3220	689	LCN
1	EA	KICK PLATE	8400 10" X 2" LDW B4E	630	IVE

THE DISTRIBUTOR WILL FIELD VERIFY THE EXISTING FRAME PREPARATIONS AND CONDITIONS FOR COMPATIBILITY WITH THE SPECIFIED HARDWARE. PROVIDE NEW METAL CLOSER COVER.

HARDWARE SET NO. 06

EACH TO HAVE:

1	EA	CONT. HINGE	224HD	628	IVE
1	EA	CLASSROOM LOCK	L9070L 03N	626	SCH
1	EA	MORTISE CYLINDER	INTERCHANGEABLE CORE SFIC	626	
1	EA	SURFACE CLOSER	4111 S-CUSH ST-3220	689	LCN
1	EA	KICK PLATE	8400 10" X 2" LDW B4E	630	IVE

THE DISTRIBUTOR WILL FIELD VERIFY THE EXISTING FRAME PREPARATIONS AND CONDITIONS FOR COMPATIBILITY WITH THE SPECIFIED HARDWARE. PROVIDE NEW METAL CLOSER COVER.

HARDWARE SET NO. 07

EACH TO HAVE:

1	EA	CONT. HINGE	224HD	628	IVE
1	EA	PRIVACY LOCK	L9040 03N L583-363	626	SCH
1	EA	SURFACE CLOSER	4011	689	LCN
1	EA	KICK PLATE	8400 10" X 2" LDW B4E	630	IVE
1	EA	WALL STOP	WS407CCV	630	IVE

THE DISTRIBUTOR WILL FIELD VERIFY THE EXISTING FRAME PREPARATIONS AND CONDITIONS FOR COMPATIBILITY WITH THE SPECIFIED HARDWARE. PROVIDE NEW METAL CLOSER COVER.

HARDWARE SET NO. 08

EACH TO HAVE:

1	EA	CONTINUOUS HINGE	SL40HD	628	SEL
1	EA	CLASSROOM LOCK	L9070L 03N	626	SCH
1	EA	MORTISE CYLINDER	INTERCHANGEABLE CORE SFIC	626	
1	EA	SURFACE CLOSER	4111 EDA	689	LCN
1	EA	KICK PLATE	8400 10" X 2" LDW B4E	630	IVE
1	EA	WALL STOP	WS407CCV	630	IVE

THE DISTRIBUTOR WILL FIELD VERIFY THE EXISTING FRAME PREPARATIONS AND CONDITIONS FOR COMPATIBILITY WITH THE SPECIFIED HARDWARE. PROVIDE NEW METAL CLOSER COVER.

HARDWARE SET NO. 09

EACH TO HAVE:

1	EA	CONT. HINGE	224HD	628	IVE
1	EA	FIRE EXIT HARDWARE	98-L-BE-F-996-03-SNB	626	VON
1	EA	SURFACE CLOSER	4011 - EDA	689	LCN
1	EA	KICK PLATE	8400 10" X 2" LDW B4E	630	IVE
1	EA	WALL STOP	WS407CCV	630	IVE

THE DISTRIBUTOR WILL FIELD VERIFY THE EXISTING FRAME PREPARATIONS AND CONDITIONS FOR COMPATIBILITY WITH THE SPECIFIED HARDWARE. PROVIDE NEW METAL CLOSER COVER.

HARDWARE SET NO. 10

EACH TO HAVE:

1	EA	CONT. HINGE	224HD	628	IVE
1	EA	KEYED FIRE RATED REMOVABLE MULLION	KR9954	689	VON
1	EA	FIRE EXIT HARDWARE	98-L-BE-F-996-03-SNB	626	VON
1	EA	RIM CYLINDER	INTERCHANGEABLE CORE SFIC	626	
1	EA	SURFACE CLOSER	4011	689	LCN
1	EA	KICK PLATE	8400 10" X 2" LDW B4E	630	IVE
1	EA	WALL STOP	WS407CCV	630	IVE

THE DISTRIBUTOR WILL FIELD VERIFY THE EXISTING FRAME PREPARATIONS AND CONDITIONS FOR COMPATIBILITY WITH THE SPECIFIED HARDWARE. PROVIDE NEW METAL CLOSER COVER.

HARDWARE SET NO. 11

EACH TO HAVE:

1	EA	CONT. HINGE	224HD	628	IVE
1	EA	FIRE EXIT HARDWARE	98-L-BE-F-996-03-SNB	626	VON
1	EA	SURFACE CLOSER	4011	689	LCN
1	EA	KICK PLATE	8400 10" X 2" LDW B4E	630	IVE
1	EA	WALL STOP	WS407CCV	630	IVE

SEE SET 10 FOR REMOVABLE MULLION.

THE DISTRIBUTOR WILL FIELD VERIFY THE EXISTING FRAME PREPARATIONS AND CONDITIONS FOR COMPATIBILITY WITH THE SPECIFIED HARDWARE. PROVIDE NEW METAL CLOSER COVER.

HARDWARE SET NO. 12

EACH TO HAVE:

1	EA	CONT. HINGE	224HD	628	IVE
1	EA	STOREROOM LOCK	L9080L 03N	626	SCH
1	EA	MORTISE CYLINDER	INTERCHANGEABLE CORE SFIC	626	
1	EA	SURFACE CLOSER	4111 CUSH ST-3220	689	LCN
1	EA	KICK PLATE	8400 10" X 2" LDW B4E	630	IVE

THE DISTRIBUTOR WILL FIELD VERIFY THE EXISTING FRAME PREPARATIONS AND CONDITIONS FOR COMPATIBILITY WITH THE SPECIFIED HARDWARE. PROVIDE NEW METAL CLOSER COVER.

HARDWARE SET NO. 13

EACH TO HAVE:

1	EA	CONT. HINGE	224HD	628	IVE
1	EA	CLASSROOM SECURITY	L9071L 03N	626	SCH
2	EA	MORTISE CYLINDER	INTERCHANGEABLE CORE SFIC	626	
1	EA	SURFACE CLOSER	4111 S-CUSH	689	LCN
1	EA	KICK PLATE	8400 10" X 2" LDW B4E	630	IVE

THE DISTRIBUTOR WILL FIELD VERIFY THE EXISTING FRAME PREPARATIONS AND CONDITIONS FOR COMPATIBILITY WITH THE SPECIFIED HARDWARE. PROVIDE NEW METAL CLOSER COVER.

HARDWARE SET NO. 14

EACH TO HAVE:

1	EA	CONT. HINGE	224HD	628	IVE
1	EA	OFFICE/ENTRY LOCK	L9050L 03N L583-363	626	SCH
1	EA	MORTISE CYLINDER	INTERCHANGEABLE CORE SFIC	626	
1	EA	SURFACE CLOSER	4111 EDA	689	LCN
1	EA	KICK PLATE	8400 10" X 2" LDW B4E	630	IVE
1	EA	WALL STOP	WS407CCV	630	IVE

THE DISTRIBUTOR WILL FIELD VERIFY THE EXISTING FRAME PREPARATIONS AND CONDITIONS FOR COMPATIBILITY WITH THE SPECIFIED HARDWARE. PROVIDE NEW METAL CLOSER COVER.

HARDWARE SET NO. 15

EACH TO HAVE:

1	EA	CONT. HINGE	224HD	628	IVE
1	EA	CLASSROOM SECURITY	L9071L 03N	626	SCH
2	EA	MORTISE CYLINDER	INTERCHANGEABLE CORE SFIC	626	
1	EA	SURFACE CLOSER	4111 EDA	689	LCN
1	EA	KICK PLATE	8400 10" X 2" LDW B4E	630	IVE
1	EA	WALL STOP	WS407CCV	630	IVE

THE DISTRIBUTOR WILL FIELD VERIFY THE EXISTING FRAME PREPARATIONS AND CONDITIONS FOR COMPATIBILITY WITH THE SPECIFIED HARDWARE. PROVIDE NEW METAL CLOSER COVER.

HARDWARE SET NO. 16

EACH TO HAVE:

1	EA	CONT. HINGE	224HD	628	IVE
1	EA	OFFICE/ENTRY LOCK	L9050L 03N L583-363	626	SCH
1	EA	MORTISE CYLINDER	INTERCHANGEABLE CORE SFIC	626	
1	EA	CLOSER	(RE-USE EXISTING)		LCN
1	EA	KICK PLATE	8400 10" X 2" LDW B4E	630	IVE
1	EA	WALL STOP	WS407CCV	630	IVE

THE DISTRIBUTOR WILL FIELD VERIFY THE EXISTING FRAME PREPARATIONS AND CONDITIONS FOR COMPATIBILITY WITH THE SPECIFIED HARDWARE. PROVIDE NEW METAL CLOSER COVER.

HARDWARE SET NO. 17

EACH TO HAVE:

1	EA	CONTINUOUS HINGE	SL40HD	628	SEL
1	EA	OFFICE/ENTRY LOCK	L9050L 03N L583-363	626	SCH
1	EA	MORTISE CYLINDER	INTERCHANGEABLE CORE SFIC	626	
1	EA	CLOSER	(RE-USE EXISTING)		LCN
1	EA	KICK PLATE	8400 10" X 2" LDW B4E	630	IVE
1	EA	WALL STOP	WS407CCV	630	IVE

THE DISTRIBUTOR WILL FIELD VERIFY THE EXISTING FRAME PREPARATIONS AND CONDITIONS FOR COMPATIBILITY WITH THE SPECIFIED HARDWARE. PROVIDE NEW METAL CLOSER COVER.

~~HARDWARE SET NO. 18 - TBD~~

~~HARDWARE SET NO. 19 - TBD~~

HARDWARE SET NO. 18 (ADDED 08-19-13 FOR DOOR A144A)

EACH TO HAVE:

1	EA	CONT. HINGE	224HD	628	IVE
	EA	KEYED REMOVABLE	KR4954	689	VON
		MULLION			
1	EA	PANIC HARDWARE	98-NL-990	626	VON
1	EA	RIM CYLINDER	SFIC	626	
1	EA	MORTISE CYLINDER	SFIC	626	
1	EA	SURFACE CLOSER	4111 SHCUSH	689	LCN
1	EA	KICK PLATE	8400 10" X 2" LDW B4E	630	IVE
1	SET	SEALS	700NA	CL	NGP
	EA	MULLION SEAL	5100	BLK	NGP
1	EA	DOOR SWEEP	600A	CL	NGP
1	EA	THRESHOLD	425HD	AL	NGP

THE DISTRIBUTOR WILL FIELD VERIFY THE EXISTING FRAME PREPARATIONS AND CONDITIONS FOR COMPATIBILITY WITH THE SPECIFIED HARDWARE. PROVIDE NEW METAL CLOSER COVER.

HARDWARE SET NO. 19 (ADDED 08-19-13 FOR DOOR A144B)

EACH TO HAVE:

1	EA	CONT. HINGE	224HD	628	IVE
1	EA	PANIC HARDWARE	98-EO	626	VON
1	EA	SURFACE CLOSER	4111 SHCUSH	689	LCN
1	EA	KICK PLATE	8400 10" X 2" LDW B4E	630	IVE
1	EA	DOOR SWEEP	600A	CL	NGP

THE DISTRIBUTOR WILL FIELD VERIFY THE EXISTING FRAME PREPARATIONS AND CONDITIONS FOR COMPATIBILITY WITH THE SPECIFIED HARDWARE. PROVIDE NEW METAL CLOSER COVER.

HARDWARE SET NO. 20

EACH TO HAVE

1	EA	STORAGE ROOM LOCK	L9080L		SCH
1	EA	HINGES		628	SEL
1	EA	CYLINDER	INTERCHANGEABLE CORE SFIC	626	
1	EA	CLOSER	(RE-USE EXISTING)		
1	EA	KICK PLATE			
1	SET	GASKETING			

HARDWARE SET NO. 21 (ADDED 08-19-13 FOR DOOR A122 & A222)

EACH TO HAVE:

1	EA	CONT. HINGE	224HD	628	IVE
1	EA	FIRE EXIT HARDWARE	98-L-F-996-03-SNB	626	VON
1	EA	RIM CYLINDER	SFIC	626	
1	EA	ELECTRIC STRIKE	6300 FSE	630	VON
1	EA	SURFACE CLOSER	4011	689	LCN
1	EA	KICK PLATE	8400 10" X 2" LDW B4E	630	IVE
1	EA	WALL STOP	WS407CCV	630	IVE
1	EA	POWER SUPPLY	PS902	LGR	VON

THE DISTRIBUTOR WILL FIELD VERIFY THE EXISTING FRAME PREPARATIONS AND CONDITIONS FOR COMPATIBILITY WITH THE SPECIFIED HARDWARE. PROVIDE NEW METAL CLOSER COVER.

HARDWARE SET NO. 22 (ADDED 08-19-13 FOR DOOR A321B)

EACH TO HAVE:

1	EA	CONT. HINGE	224HD	628	IVE
1	EA	KEYED REMOVABLE MULLION	KR4854-B	689	VON
1	EA	FIRE EXIT HARDWARE	98-L-F-996-03-SNB	626	VON
1	EA	RIM CYLINDER	SFIC	626	
1	EA	MORTISE CYLINDER	SFIC	626	
1	EA	ELECTRIC STRIKE	6300 FSE	630	VON
1	EA	SURFACE CLOSER	4011	689	LCN
1	EA	KICK PLATE	8400 10" X 2" LDW B4E	630	IVE
1	EA	WALL STOP	WS407CCV	630	IVE

THE DISTRIBUTOR WILL FIELD VERIFY THE EXISTING FRAME PREPARATIONS AND CONDITIONS FOR COMPATIBILITY WITH THE SPECIFIED HARDWARE. PROVIDE NEW METAL CLOSER COVER.

HARDWARE SET NO. 23 (ADDED 08-19-13 FOR DOOR A321A)

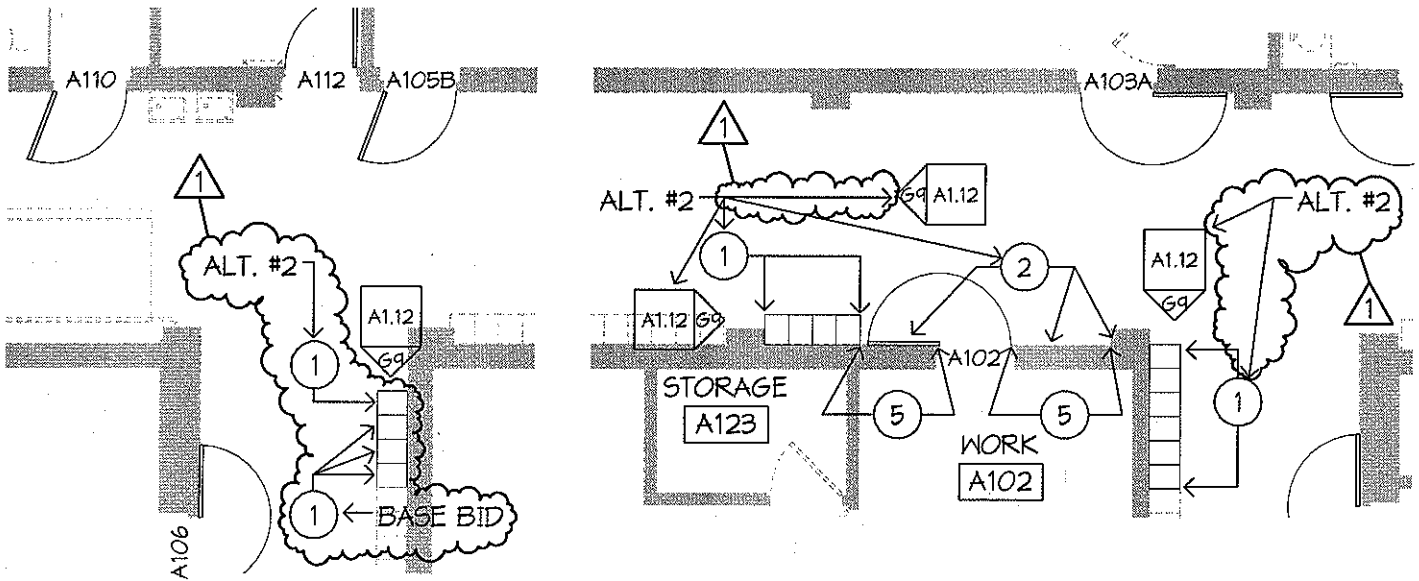
EACH TO HAVE:

1	EA	CONT. HINGE	224HD	628	IVE
1	EA	FIRE EXIT HARDWARE	98-L-F-996-03-SNB	626	VON
1	EA	RIM CYLINDER	SFIC	626	
1	EA	ELECTRIC STRIKE	6300 FSE	630	VON
1	EA	SURFACE CLOSER	4011	689	LCN
1	EA	KICK PLATE	8400 10" X 2" LDW B4E	630	IVE
1	EA	WALL STOP	WS407CCV	630	IVE
1	EA	POWER SUPPLY	PS902	LGR	VON

SEE SET 10 FOR REMOVABLE MULLION.

THE DISTRIBUTOR WILL FIELD VERIFY THE EXISTING FRAME PREPARATIONS AND CONDITIONS FOR COMPATIBILITY WITH THE SPECIFIED HARDWARE. PROVIDE NEW METAL CLOSER COVER.

END OF SECTION 08 71 00



Copy of DOOR / OPENING SCHEDULE

DOOR NO	DOOR / OPENING					LAB EL	FRAME			GL	MOUNTING CONDITIONS			HDW GRP	REMARKS
	TYPE	QTY	WIDTH	HEIGHT	MATL		TYPE	DEPTH	MATL		HEAD	JAMB	SILL		
A104A	N	1	3'-0"	7'-0"	H.M.	20	EXIST H.M. FR 3	--	EXIST	--	C7/A1.11	C7/A1.11	--	4 6	△
A104B	N	1	3'-0"	7'-0"	H.M.	20	EXIST H.M. FR 3	--	EXIST	--	C7/A1.11	C7/A1.11	--	4 6	△
A122	N	1	3'-4"	7'-0"	H.M.	60	EXIST H.M. FR 3	--	EXIST	--	C7/A1.11	C7/A1.11	--	21 5.7	△
A222	N	1	3'-0"	7'-0"	H.M.	60	EXIST WD FR1	--	EXIST	--	G7/A1.11	G7/A1.11	--	21 4.7	△
A321A	N	1	3'-0"	7'-0"	H.M.	60	EXIST H.M. FR 3	--	EXIST	--	C7/A1.11	C7/A1.11	--	23 4.7	△
A321B	N	1	3'-0"	7'-0"	H.M.	60	EXIST H.M. FR 3	--	EXIST	--	C7/A1.11	C7/A1.11	--	22 4.7	△

PROJECT: GREAT LAKES ACADEMY - DOOR REPLACEMENT

DATE: 8/8/2013

COMMISSION NO: 134012

REVISIONS:  ADDENDA #1

REV. DATE: 8/19/13

