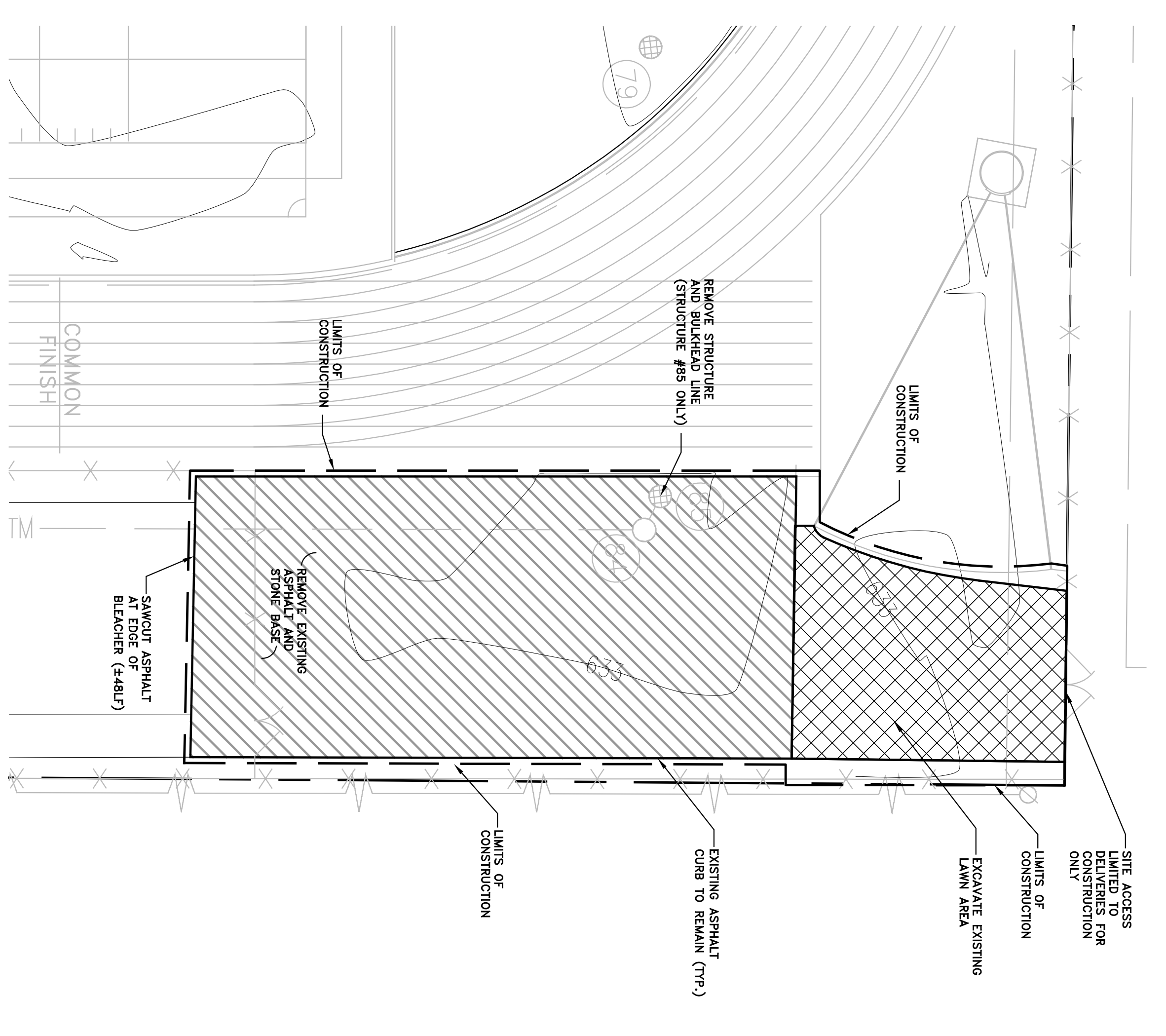
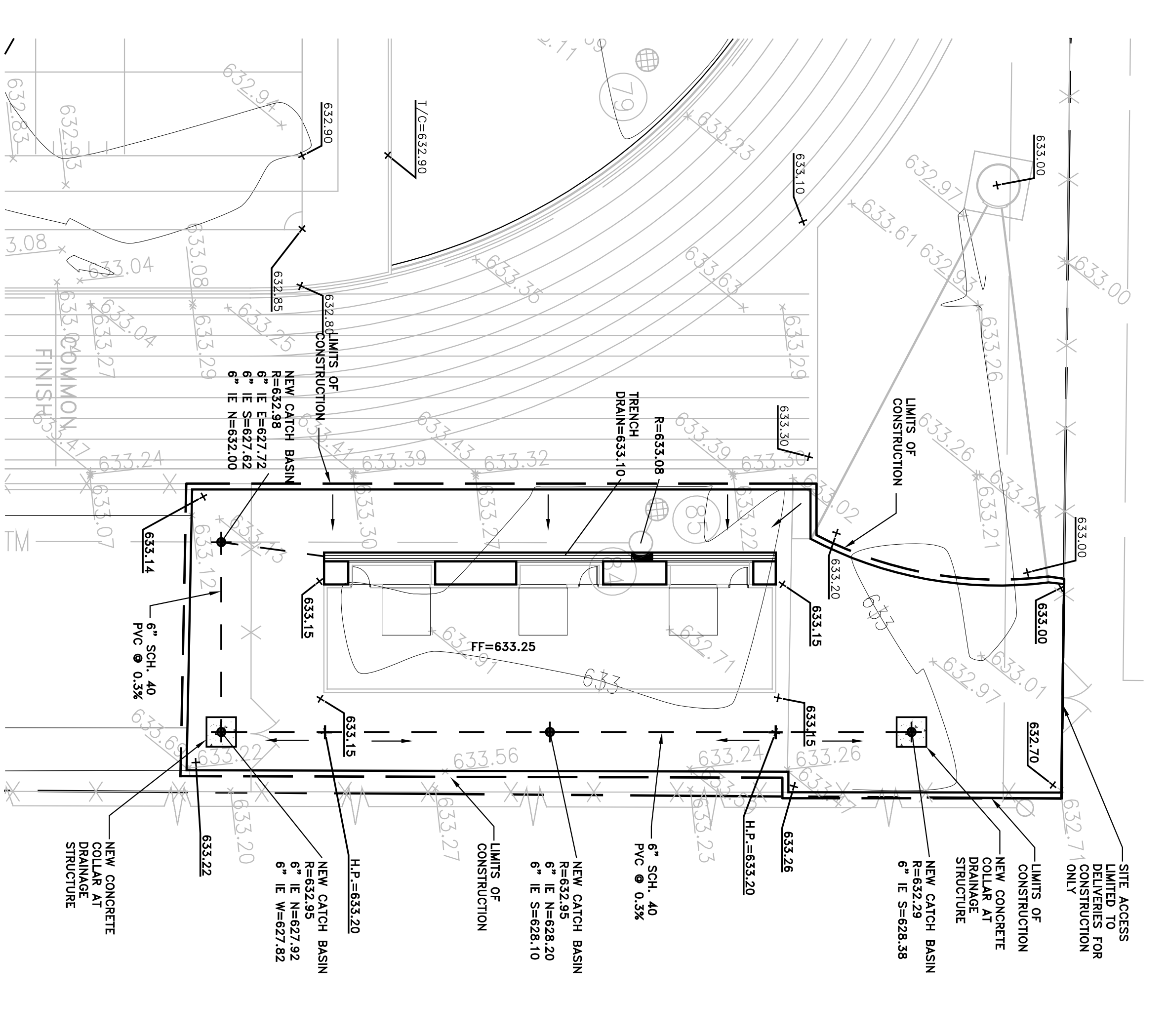


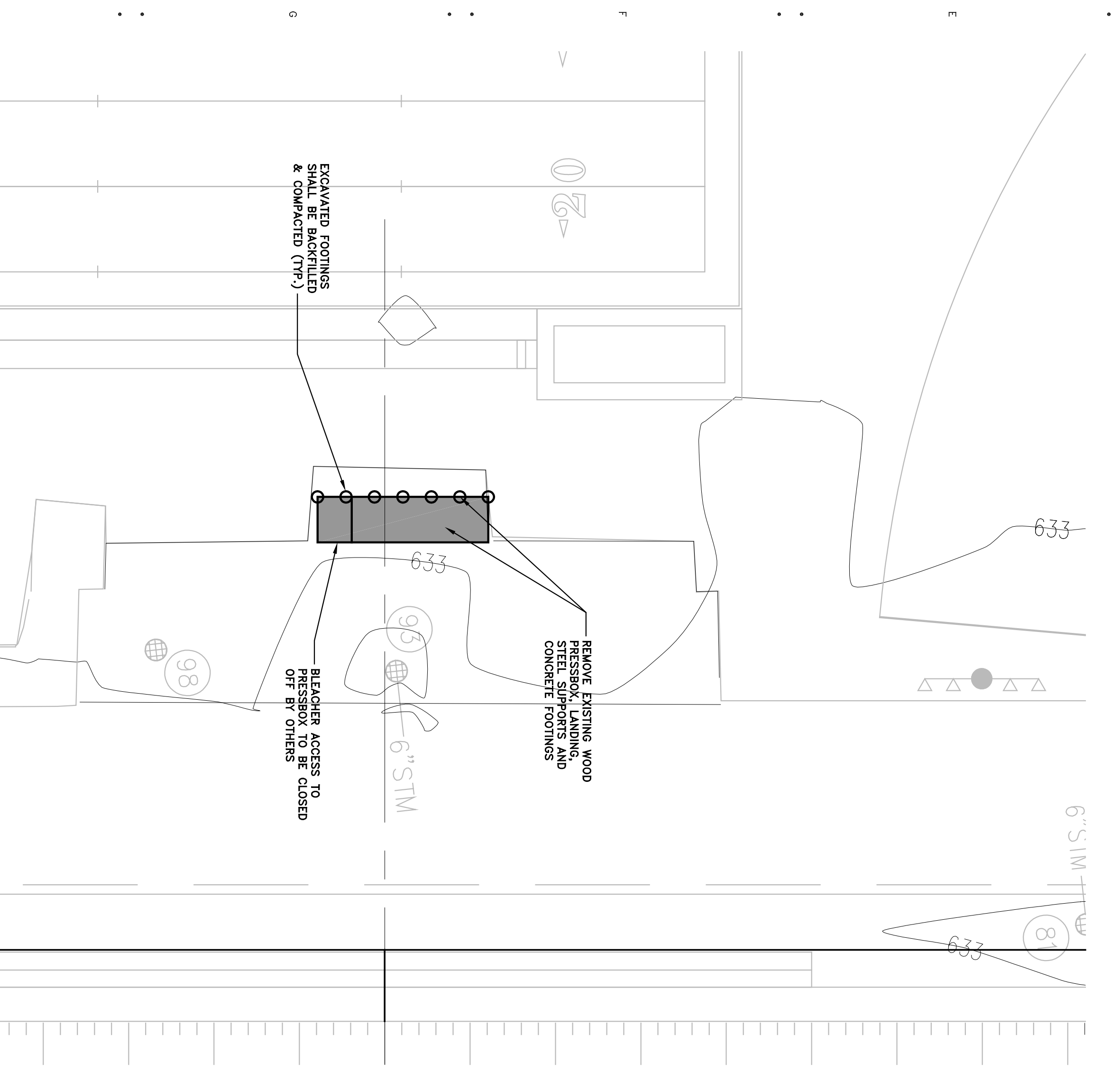
1 PROPOSED SITE PLAN
SCALE 1/16"=1'-0"



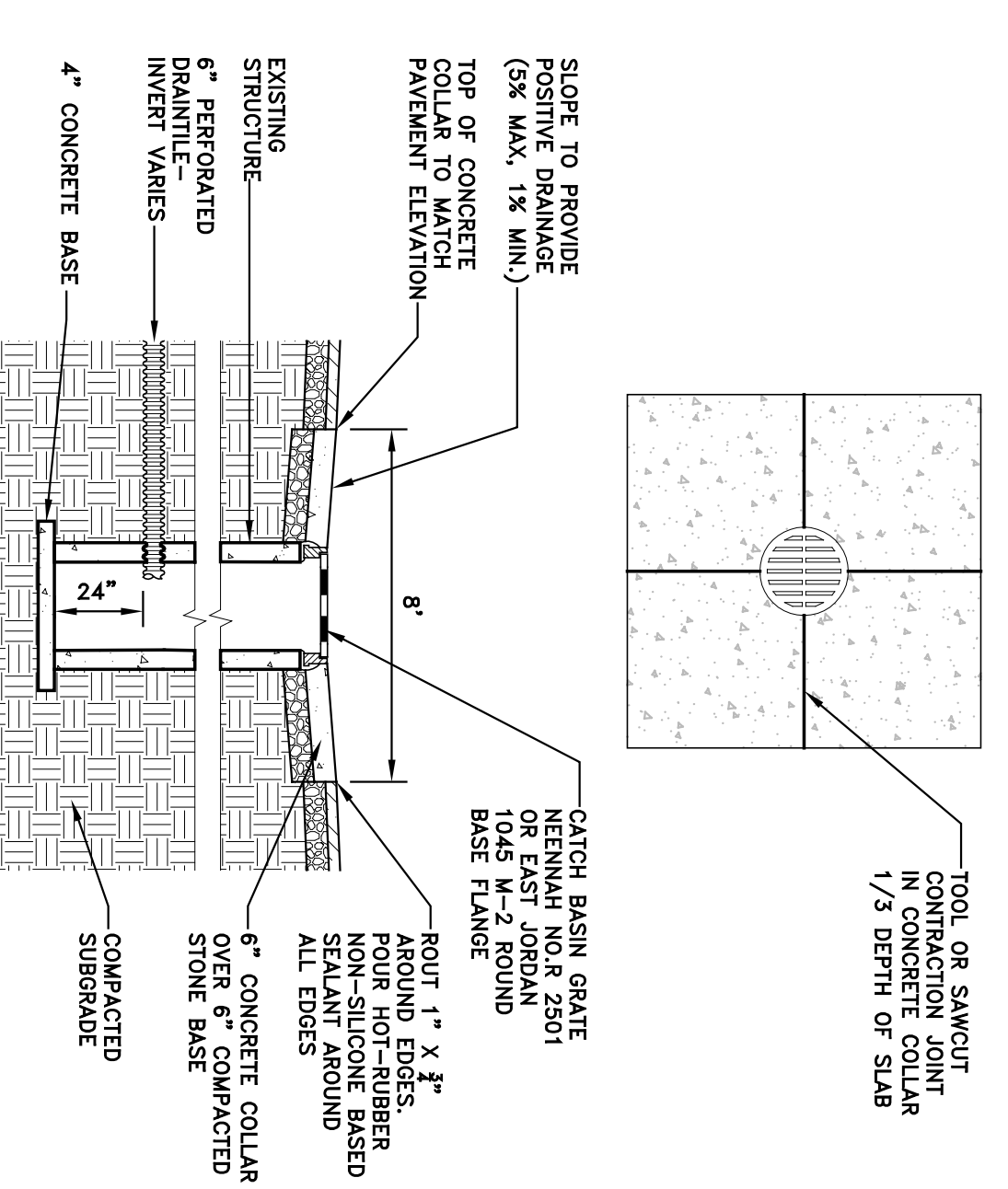
2 EXISTING CONDITIONS & DEMOLITION PLAN
SCALE 1/16"=1'-0"



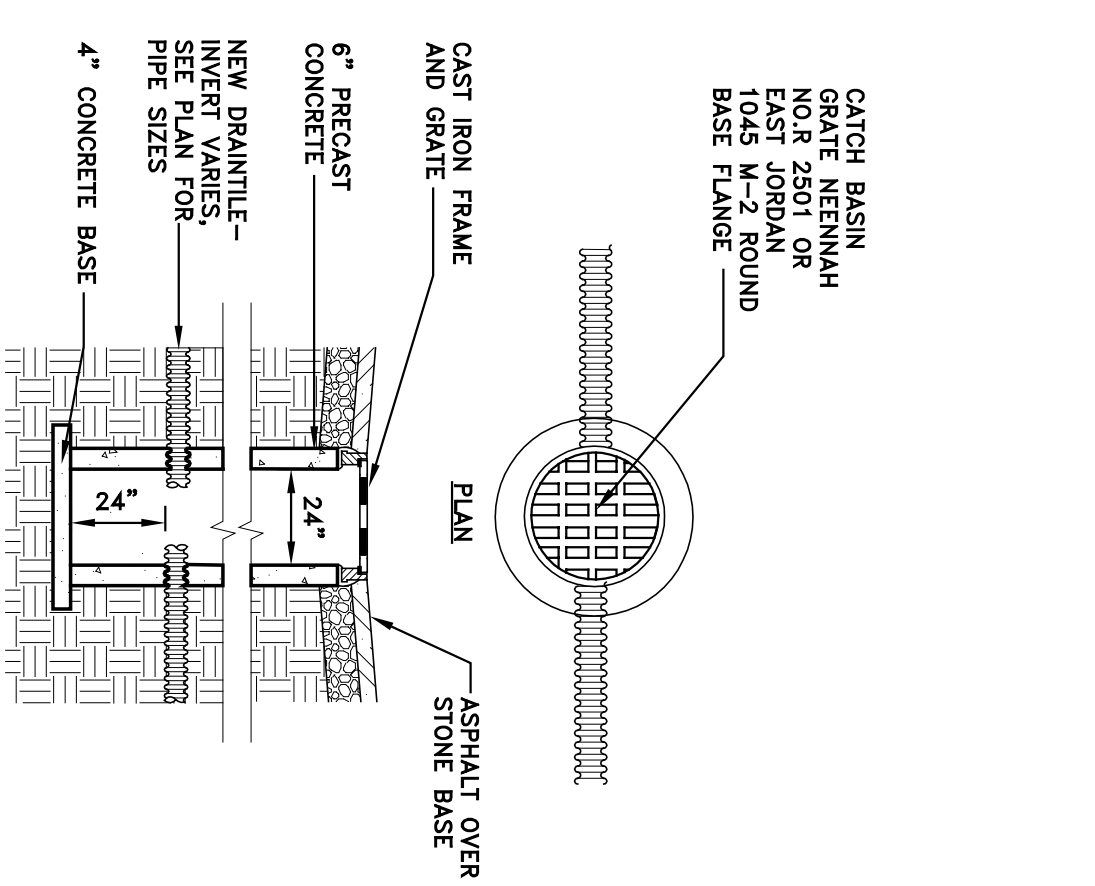
3 GRADING & DRAINAGE PLAN
SCALE 1/16"=1'-0"



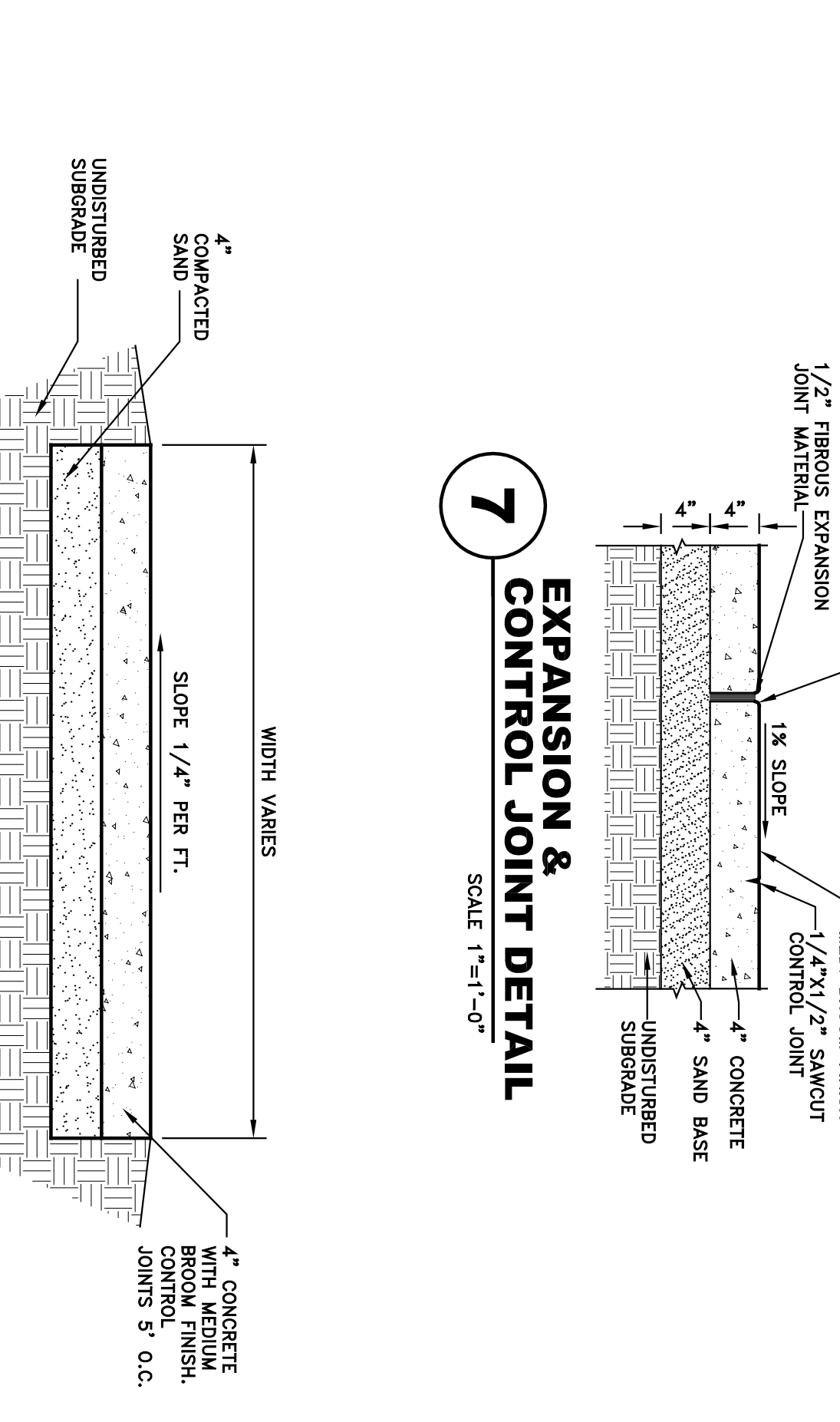
4 EXISTING PRESSBOX DEMOLITION PLAN
SCALE 1/8"=1'-0"



5 CONCRETE COLLAR CATCH BASIN DETAIL
SCALE 1/4"=1'-0"

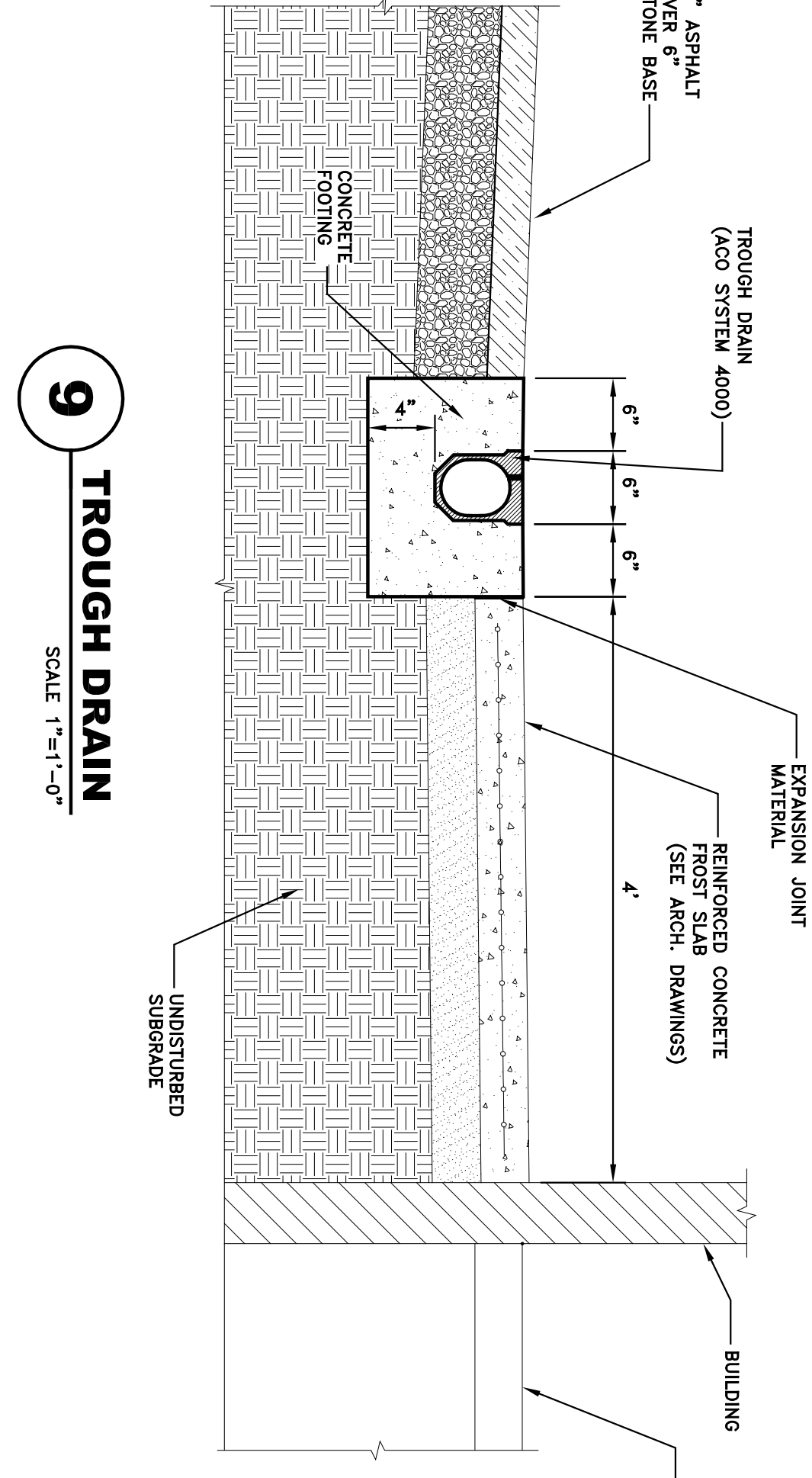


6 CATCH BASIN DETAIL
SCALE 1/4"=1'-0"

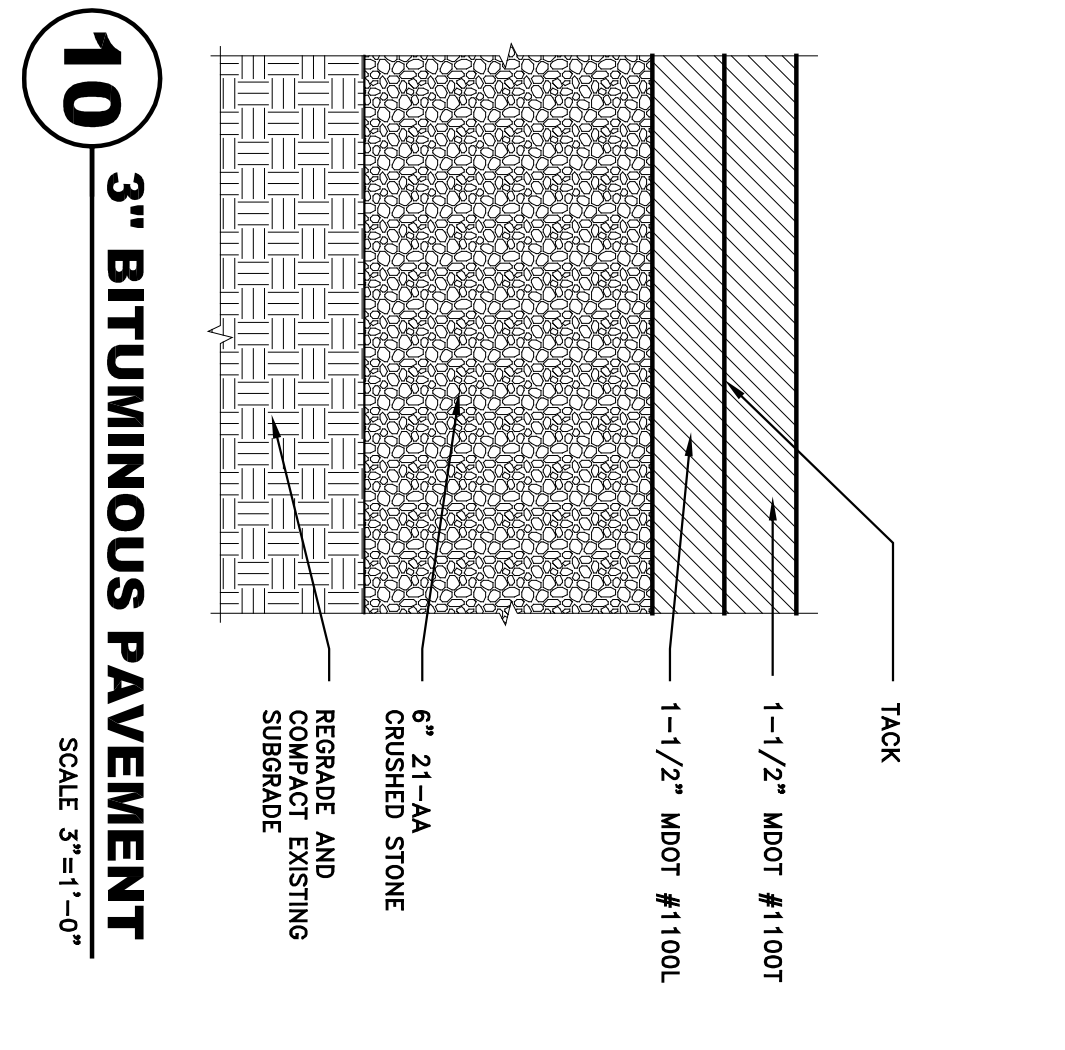


7 EXPANSION & CONTROL JOINT DETAIL
SCALE 1"=1'-0"

8 CONCRETE SIDEWALK
SCALE 1"=1'-0"



9 TROUGH DRAIN
SCALE 1"=1'-0"



10 3\"/>

LEGEND

EXISTING	PROPOSED
---X--- SPOT ELEVATION	---X--- SPOT ELEVATION
---X--- FENCE	---X--- TOP OF TRENCH ELEVATION
---X--- DRAINAGE STRUCTURE	---X--- TOP OF CURB ELEVATION
---X--- STORM DRAIN	---X--- TOP OF WALL ELEVATION
---X--- LIGHT POLE	---X--- FENCE - SEE PLANS FOR HT.
---X--- ELECTRICAL	---X--- DRAINAGE STRUCTURE
---X--- WATER	---X--- STORM DRAIN
---X--- TELEPHONE	---X--- FLAT DRAIN
	---X--- PERFORATED DRAINPILE
	---X--- PERFORATED DRAINPILE
	---X--- PERFORATED DRAINPILE
	---X--- LIGHT POLE
	---X--- ELECTRICAL
	---X--- WATER
	---X--- TELEPHONE
	---X--- ASPHALT (2 LIFTS) OVER 6\"/>
	---X--- CRUSHED STONE BASE
	---X--- DEMOLITION

NEW STORAGE BUILDING PLANS

Project Number:	19404
Date:	9/27/2019
Drawn:	KCS
Checked:	PSL

Scale: As Shown

13.1

Hazel Park High School Storage Building
23400 Hughes Avenue
Hazel Park, MI 48030

School District of the City of Hazel Park
1020 East E20
Hazel Park, MI 48030

WOLD architects engineers
www.woldae.com
525 West Shuman Street
Suite 800
Hazel Park, MI 48030
Tel: 248.284.0815
Fax: 248.284.0815
Email: wold@woldae.com

FORESITE design
11111 FOREST DRIVE, SUITE 100
HUNTSVILLE, AL 35894
Tel: 256.837.7177 • Fax: 256.837.8033
www.foresitedesign.com