

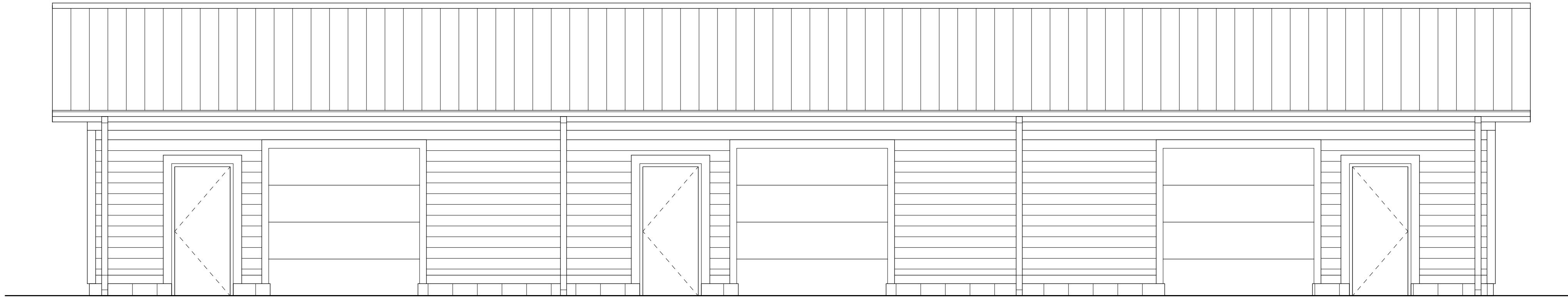
MI

Hazel Park High School Storage Building

School District of the City of Hazel Park

Hazel Park, Michigan

134014



CIVIL

L3.1 NEW STORAGE BUILDING PLANS

ARCHITECTURAL

A1.11 FOUNDATION, MAIN LEVEL AND ROOF PLAN
A1.12 ROOF AND ROOF FRAMING PLANS AND DETAILS
A2.11 EXTERIOR ELEVATIONS AND DOOR / FRAME TYPES
A2.21 BUILDING AND WALL SECTIONS

ELECTRICAL

E0.00 ELECTRICAL GENERAL INFORMATION
E1.11 STORAGE BUILDING ELECTRICAL PLAN, SCHEDULES & ONE LINE DIAGRAM

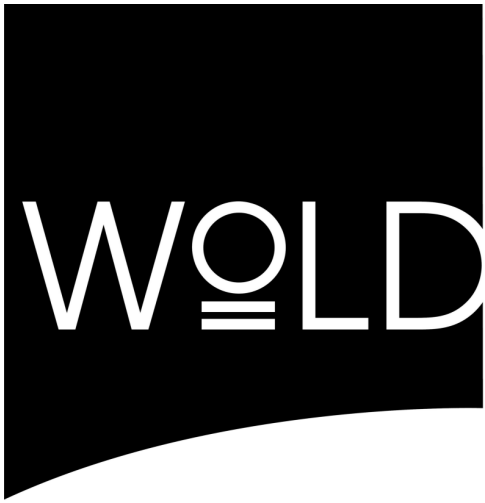
Hazel Park High School Storage Building

23400 Hughes
Hazel Park, MI 48030

134014

School District of the City of Hazel Park

1620 East Elza
Hazel Park, MI 48030



architects
engineers
www.woldae.com

333 West Seventh Street
Three Hundred Twenty
Royal Oak, MI 48067
tel: 248 284 0611
fax: 248 284 0615
mail@woldae.com