

PARTNERS in Architecture, PLC
 65 MARKET STREET
 MOUNT CLEMENS, MI 48043
 P 586.469.3600
 F 586.469.3607

Statement of Intellectual Property

The ideas, concepts, drawings and thoughts conveyed herein are the intellectual property of PARTNERS in Architecture, P.L.C. 65 Market Street, Mount Clemens, MI 48043 (P 586.469.3600). This set of drawings, in whole or in part, may not be reproduced, without the written consent of PARTNERS in Architecture, P.L.C. This information is protected under U.S. Copyright Law, all rights reserved.

© Copyright 2013

CONSULTANT

KEY PLAN

OWNER

**CITY OF
 NEW BALTIMORE**

PROJECT NAME

**Department of
 Public Service
 Building Addition**

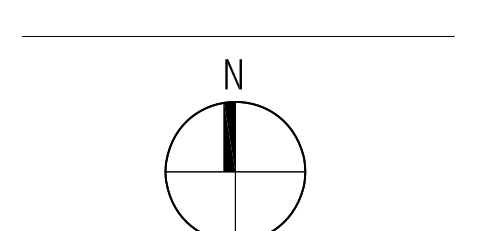
35389 Cricklewood
 New Baltimore, MI 48047

PROJECT NO.

13-107

ISSUES / REVISIONS

OWNER REVIEW	5/8/2013
BIDS/CONSTRUCTION	5/17/2013



DRAWN BY

KJB

CHECKED BY

APPROVED BY

SHEET NAME

**DEMO
 ELECTRICAL
 PLAN**

SHEET NO.

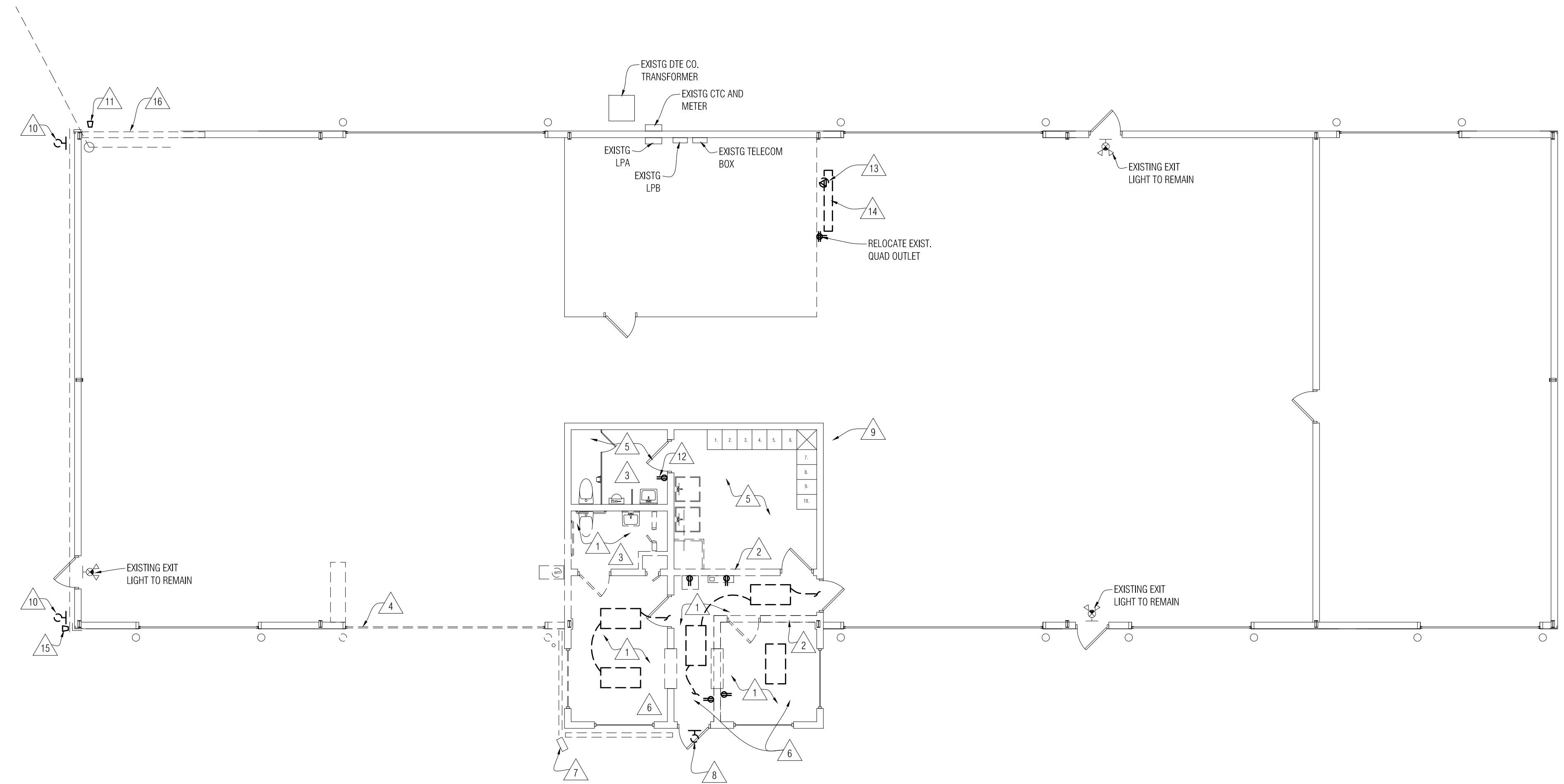
E1-01

DEMO ELECTRICAL GENERAL NOTES:

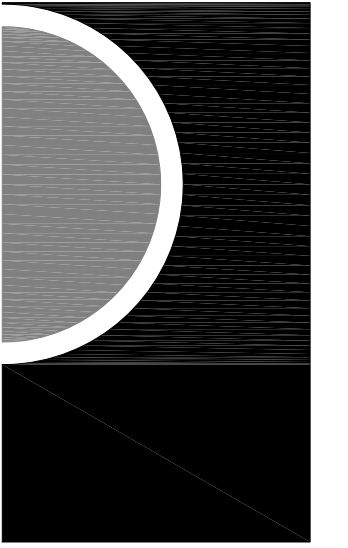
- A. THESE DEMOLITION NOTES AND PLAN DO NOT FULLY REPRESENT ALL DEMOLITION WORK REQUIRED TO INSTALL NEW WORK IN ACCORDANCE WITH CONTRACT DOCUMENTS, BUT ARE INTENDED TO SERVE AS GENERAL DEMOLITION GUIDELINES. REFER TO ARCHITECTURAL, STRUCTURAL, MECHANICAL AND ELECTRICAL DRAWINGS FOR LOCATIONS OF INCIDENTAL DEMOLITION WORK NOT INDICATED ON THIS PLAN.
- B. MAINTAIN CIRCUIT CONTINUITY TO ALL EXISTING TO REMAIN ITEMS ON THE SAME CIRCUIT OUTSIDE OF DEMOLITION AREA.
- C. PROVIDE COVERPLATES FOR ALL ABANDONED BOXES (INCLUDING BOXES FOR CLOCKS, SPEAKERS, ETC) AND DEVICES TO BE REMOVED. REFER TO SPECIFICATION AND SHEET E3-01 GENERAL NOTES FOR ADDITIONAL INFORMATION.
- D. COORDINATE DEMOLITION WITH ARCHITECTURAL AND MECHANICAL DRAWINGS.
- E. ELECTRICAL CONTRACTOR IS RESPONSIBLE FOR REVIEW OF THE AMOUNT OF DEMOLITION REQUIRED PRIOR TO BID SUBMITTAL.
- F. REFER TO ARCHITECTURAL DEMOLITION PLANS FOR COMPLETE SCOPE OF DEMOLITION WORK.

DEMO ELECTRICAL KEY NOTES:

- 1. DISCONNECT AND REMOVE EXISTING LIGHTING FIXTURES AND ASSOCIATED LIGHT SWITCH CONTROLS IN THIS AREA, INCLUDING ASSOCIATED WIRING, CONDUITS, BOXES, SUPPORT, ETC. EXISTING BRANCH CIRCUITS SHALL BE REUSED FOR NEW LIGHTING IN THE SAME ROOM OR AREA, REFER TO SHEET E3-01 FOR ADDITIONAL INFORMATION. EXISTING LIGHTING FIXTURES AND SWITCHES ARE NOT SPECIFICALLY INDICATED ON THESE PLANS. FIELD VERIFY EXISTING CONDITIONS PRIOR TO BID.
- 2. DISCONNECT AND REMOVE ALL EXISTING ELECTRICAL ITEMS, ON WALLS TO BE REMOVED UNLESS OTHERWISE NOTED, INCLUDING BUT NOT LIMITED TO EXISTING PANELBOARDS, RECEPTACLES, PHONE/DATA, CLOCKS, PA AND SECURITY SYSTEM DEVICES, ASSOCIATED WIRING, SUPPORTS, BOXES, U.O.N. REFER TO ADDITIONAL NOTES AT ITEMS INDICATED FOR WORK REQUIRED. EXISTING RECEPTACLES AND DATA/PHONE OUTLETS ON EXISTING TO REMAIN WALLS TO REMAIN UNLESS OTHERWISE NOTED, SPECIFICALLY INDICATED ON THESE PLANS. FIELD VERIFY EXISTING CONDITIONS PRIOR TO BID.
- 3. EXISTING MECHANICAL UNIT TO BE DISCONNECTED. REMOVE WIRING BACK TO SOURCE. UNIT IS REMOVED BY MECHANICAL. REFER TO MECHANICAL DOCUMENTS FOR ADDITIONAL NOTES.
- 4. DISCONNECT EXISTING OVERHEAD DOOR CIRCUIT B. FACILITATE REMOVAL OF DOOR.
- 5. ALTERNATE #3 REMOVE EXISTING LIGHTING FIXTURE, BRANCH CIRCUITS, SWITCHING FOR LIGHTING REPLACEMENT.
- 6. VERIFY GROUNDING OF EXISTING RECEPTACLES TO REMAIN IN OFFICE AREA AND PROVIDE NEW IF REQUIRED.
- 7. EXISTING SECURITY CAMERA - REMOVE, STORE AND REINSTALL ON NEW SURFACE. VERIFY LOCATION WITH OWNER.
- 8. REMOVE EXISTING EXTERIOR LIGHT FIXTURE AND BRANCH CIRCUIT. PROVIDE EXTERIOR PRE-FINISHED COVER PLATE.
- 9. RE-ROUTE EXISTING BRANCH FEEDER FOR NEW WALL CONSTRUCTION.
- 10. EXISTING EXTERIOR LIGHT FIXTURE TO BE REMOVED AND RELOCATED WITH BRANCH CIRCUIT EXTENSION.
- 11. REMOVE EXTERIOR SPEAKER AND PROVIDE COVER PLATE / SEALANT AT METAL PANEL. TURN SPEAKER OVER TO OWNER.
- 12. EXISTING DUPLEX OUTLET TO BE REMOVED AND RELOCATED AND REPLACED WITH GFCI TYPE.
- 13. EXISTING HOLDING OUTLET TO BE REMOVED AND RELOCATED ON NEW WALL CONSTRUCTION.
- 14. EXISTING SUSPENDED LIGHT FIXTURE TO BE ADJUSTED FOR NEW WALL CONSTRUCTION. COORDINATE WITH OVERHEAD DOOR TRACK.
- 15. RELOCATE EXISTING FUEL SHUT-OFF SWITCH.
- 16. PROVIDE TEMP. SUPPORT/REMOVE AND REINSTALL ELECTRICAL FEEDER TO OUT BUILDING FOR WALL REPAIR.



1 Demo Electrical Plan
 1/8" = 1'-0"



PARTNERS in Architecture, PLC
 65 MARKET STREET
 MOUNT CLEMENS, MI 48043
 P 586.469.3600
 F 586.469.3607

Statement of Intellectual Property
 The ideas, concepts, drawings and thoughts conveyed herein are the intellectual property of PARTNERS in Architecture, P.L.C. 65 Market Street, Mount Clemens, MI 48043 (P 586.469.3600). This set of drawings, in whole or in part, may not be reproduced, without the written consent of PARTNERS in Architecture, P.L.C. This information is protected under U.S. Copyright Law, all rights reserved.

© Copyright 2013

CONSULTANT

KEY PLAN

OWNER

**CITY OF
 NEW BALTIMORE**

PROJECT NAME

**Department of
 Public Service
 Building Addition**

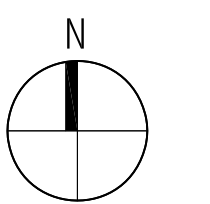
35389 Cricklewood
 New Baltimore, MI 48047

PROJECT NO.

13-107

ISSUES / REVISIONS

OWNER REVIEW 5/8/2013
 BIDS/CONSTRUCTION 5/17/2013



DRAWN BY

KJB

CHECKED BY

APPROVED BY

SHEET NAME

LIGHTING PLAN

SHEET NO.

E4-01

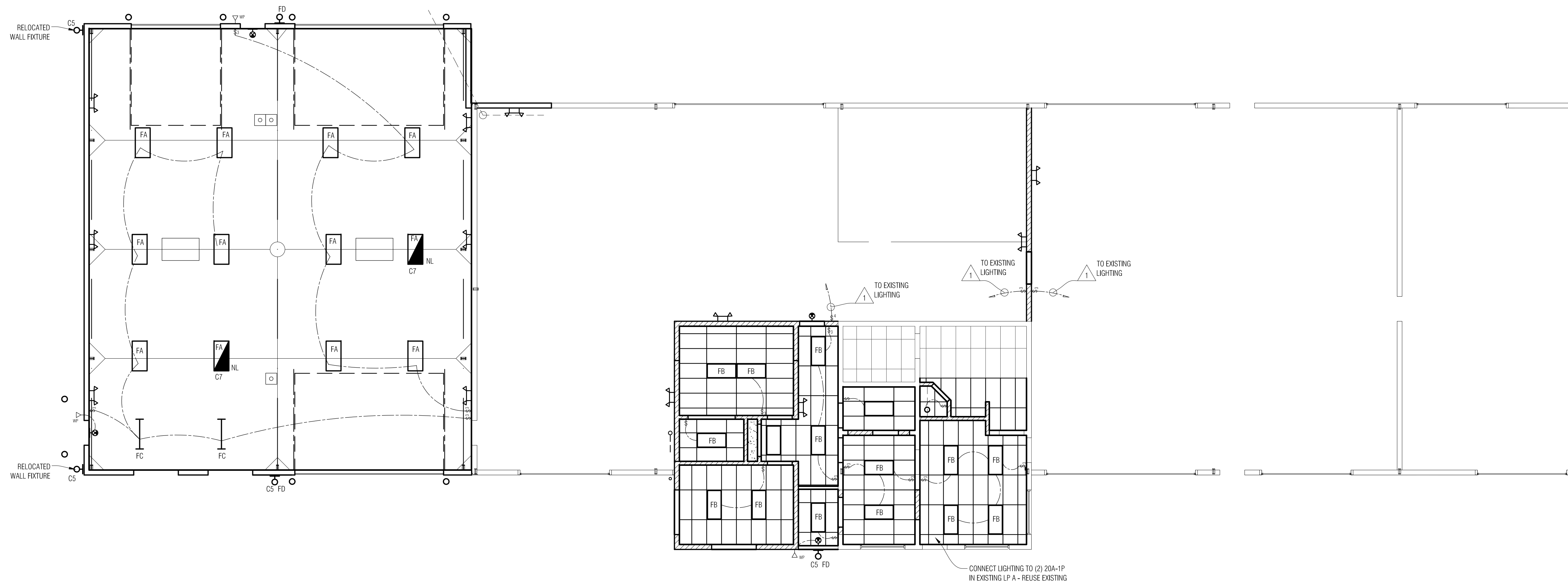
LIGHTING KEY NOTES:

- 1. REVISE EXISTING SWITCHING TO PROVIDE NEW 3-WAY AND/OR 4-WAY SWITCHING AT EXISTING LOCATION AND NEW LOCATION.
- 2. CONNECT ALL EXIT LIGHTS AND EMERGENCY LIGHTS TO LOCAL LIGHTING CIRCUIT AHEAD OF SWITCHING.

Lighting Symbols Legend

	5/8" GYP BD ON 3 5/8" METAL STUD CONSTRUCTION AT 16" O.C. SECURE TO STRUCTURE ABOVE AT 48" O.C. MAX EACH WAY
	2' X 4' LAY-IN FLUORESCENT FIXTURE IN GRID
	2' X 4' PENDANT FIXTURE
	1' X 4' PENDANT FIXTURE
	EXIT LIGHTS - CEILING & WALL MOUNTED
	EMERGENCY LIGHTS - WALL MOUNTED
	REMOTE WEATHERPROOF EMERGENCY LIGHT CONNECT TO EXIT LIGHT
	EXTERIOR WALL PACK W/ LIGHT CUT-OFF

Fixture Legend		
TYPE	LAMPS	DESCRIPTION
FA	4-T5 F54TH0	SURFACE MTD OR SUSPENDED 4 LAMP INDUSTRIAL FLUORESCENT FIXTURES W/ POLISHED REFLECTOR TO MATCH THOSE PRESENTLY USED SIMILAR TO COOPER F-SERIES HIGH BAY
FB	3-32W T8	RECESSED 2'x4' FLUORESCENT FIXTURE W/ .125 PRISMATIC ACRYLIC LENS ELECTRONIC BALLAST EQUAL TO
FC	2-T5 F54TH0	SIMILAR TO TYPE FA EXCEPT (2) LAMP
FD	1-100W METAL HALIDE	WALL PACK W/ CUT-OFF DISTRIBUTION AND BUILT-IN PHOTOCCELL EQUAL TO



1 Reflected Ceiling Plan
 1/8" = 1'-0"