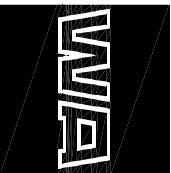


© 2013 Wakely Associates, Inc./ Architects

# ENLARGED DEMOLITION PLAN

SCALE: 1/4"=1'-0"

|   |              |  |          |
|---|--------------|--|----------|
|  <b>WAKELY ASSOCIATES, INC./ ARCHITECTS</b><br>30500 Van Dyke Avenue, Suite M-7,<br>Warren, Michigan 48093<br>PH: 586.573.4100<br>FX: 586.573.0822<br><a href="http://www.wakelyala.com">www.wakelyala.com</a> |              | <b>Addendum No. 1</b><br><b>Warren Woods Public Schools</b><br><b>Tower High School</b><br><b>POH1 Toilet Renovations</b><br><br>SCALE: NONE |          |
| DRAWN BY:   | JSM          | PROJECT NO.:   | 131480   |
| APPROVED BY:  | RS           | REFERENCE SHEET:   | A1.1     |
| DATE:   | MAY 28, 2013 | SHEET NO.:   | A01-SK-1 |

© 2013 Wakely Associates, Inc./ Architects

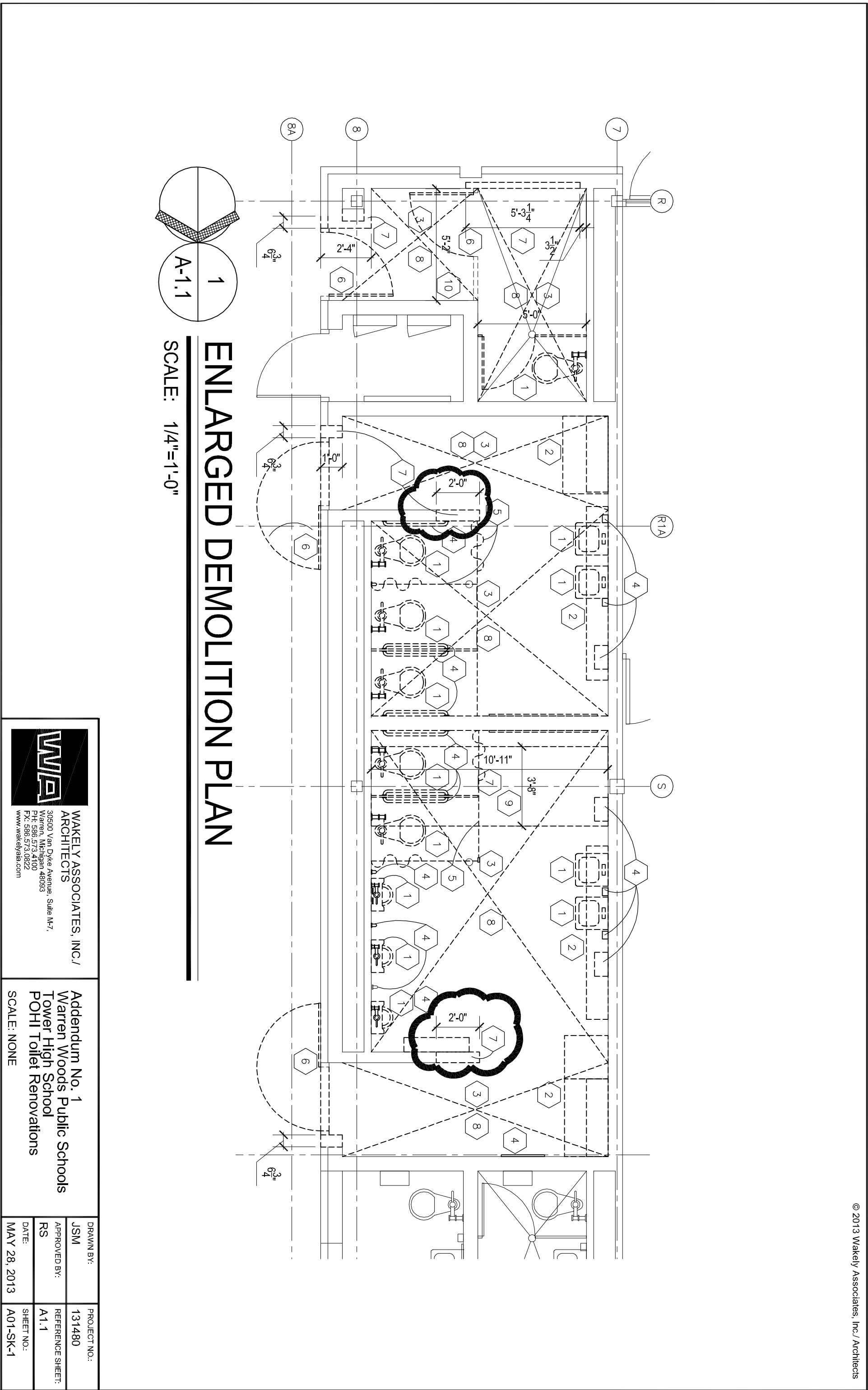
# ENLARGED DEMOLITION PLAN

SCALE: 1/4"=1'-0"

WAKELY ASSOCIATES, INC./  
ARCHITECTS  
30500 Van Dyke Avenue, Suite M-7,  
Warren, Michigan 48093  
PH: 586.573.4100  
FX: 586.573.0822  
www.wakelyva.com

Addendum No. 1  
Warren Woods Public Schools  
Tower High School  
POHI Toilet Renovations  
SCALE: NONE

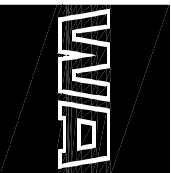
|              |                  |
|--------------|------------------|
| DRAWN BY:    | PROJECT NO.:     |
| JSM          | 131480           |
| APPROVED BY: | REFERENCE SHEET: |
| RS           | A1.1             |
| DATE:        | SHEET NO.:       |
| MAY 28, 2013 | A01-SK-1         |



© 2013 Wakely Associates, Inc./ Architects

# ENLARGED DEMOLITION PLAN

SCALE: 1/4"=1'-0"

|  |                          |
|--|--------------------------|
|                                       |                          |
| WAKELY ASSOCIATES, INC./ ARCHITECTS  |                          |
| 30500 Van Dyke Avenue, Suite M-7,<br>Warren, Michigan 48093<br>PH: 586.573.4100<br>FX: 586.573.0822<br>www.wakelyala.com |                          |
| Addendum No. 1<br>Warren Woods Public Schools<br>Tower High School<br>POHI Toilet Renovations                            |                          |
| SCALE: NONE  |                          |
| DRAWN BY:<br>JSM   | PROJECT NO.:<br>131480   |
| APPROVED BY:<br>RS   | REFERENCE SHEET:<br>A1.1 |
| DATE:<br>MAY 28, 2013  | SHEET NO.:<br>A01-SK-1   |

[illegible]

© 2013 Wakely Associates, Inc./ Architects

# ENLARGED DEMOLITION PLAN

SCALE: 1/4"=1'-0"

WAKELY ASSOCIATES, INC./  
ARCHITECTS  
30500 Van Dyke Avenue, Suite M-7,  
Warren, Michigan 48093  
PH: 586.573.4100  
FX: 586.573.0822  
www.wakelyva.com

Addendum No. 1  
Warren Woods Public Schools  
Tower High School  
POHI Toilet Renovations  
SCALE: NONE

|              |                  |
|--------------|------------------|
| DRAWN BY:    | PROJECT NO.:     |
| JSM          | 131480           |
| APPROVED BY: | REFERENCE SHEET: |
| RS           | A1.1             |
| DATE:        | SHEET NO.:       |
| MAY 28, 2013 | A01-SK-1         |

© 2013 Wakely Associates, Inc./ Architects

# ENLARGED DEMOLITION PLAN

SCALE: 1/4"=1'-0"

WAKELY ASSOCIATES, INC./  
ARCHITECTS  
30500 Van Dyke Avenue, Suite M-7,  
Warren, Michigan 48093  
PH: 586.573.4100  
FX: 586.573.0822  
www.wakelyva.com

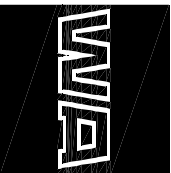
Addendum No. 1  
Warren Woods Public Schools  
Tower High School  
POHI Toilet Renovations  
SCALE: NONE

|              |                  |
|--------------|------------------|
| DRAWN BY:    | PROJECT NO.:     |
| JSM          | 131480           |
| APPROVED BY: | REFERENCE SHEET: |
| RS           | A1.1             |
| DATE:        | SHEET NO.:       |
| MAY 28, 2013 | A01-SK-1         |

© 2013 Wakely Associates, Inc./ Architects

# ENLARGED DEMOLITION PLAN

SCALE: 1/4"=1'-0"

|  |                          |
|--|--------------------------|
|                                       |                          |
| WAKELY ASSOCIATES, INC./ ARCHITECTS  |                          |
| 30500 Van Dyke Avenue, Suite M-7,<br>Warren, Michigan 48093<br>PH: 586.573.4100<br>FX: 586.573.0822<br>www.wakelyala.com |                          |
| Addendum No. 1<br>Warren Woods Public Schools<br>Tower High School<br>POHI Toilet Renovations                            |                          |
| SCALE: NONE  |                          |
| DRAWN BY:<br>JSM   | PROJECT NO.:<br>131480   |
| APPROVED BY:<br>RS   | REFERENCE SHEET:<br>A1.1 |
| DATE:<br>MAY 28, 2013  | SHEET NO.:<br>A01-SK-1   |

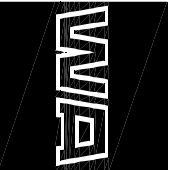
© 2013 Wakely Associates, Inc./ Architects

An architectural drawing titled "ENLARGED DEMOLITION PLAN". It shows a detailed floor plan of a building with various rooms and structural elements. The plan includes numerous numbered callouts (1 through 10) indicating specific areas or components to be demolished. Dimensions are provided for several key areas, such as 5'-3 1/4", 5'-2", 2'-4", 2'-0", 10'-11", and 3'-8". Section cut symbols are placed around the perimeter: R at the top left, R1A at the top center, S at the top right, 8A at the bottom left, and 8 at the bottom center. A north arrow is located in the upper right corner.

A circular graphic containing a north arrow pointing towards the top of the sheet. To the right of the circle is the text "1/A-1.1".

# ENLARGED DEMOLITION PLAN

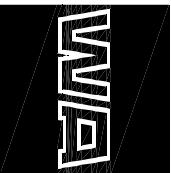
SCALE: 1/4"=1'-0"

|   |              |   |
|---|--------------|---|
|  <b>WAKELY ASSOCIATES, INC./ ARCHITECTS</b><br>30500 Van Dyke Avenue, Suite M-7,<br>Warren, Michigan 48093<br>PH: 586.573.4100<br>FX: 586.573.0822<br><a href="http://www.wakelyva.com">www.wakelyva.com</a> |              | <b>Addendum No. 1</b><br><b>Warren Woods Public Schools</b><br><b>Tower High School</b><br><b>POH1 Toilet Renovations</b><br><b>SCALE: NONE</b> |
| DRAWN BY:   | JSM          | PROJECT NO.: 131480   |
| APPROVED BY:  | RS           | REFERENCE SHEET: A1.1   |
| DATE:   | MAY 28, 2013 | SHEET NO.: A01-SK-1   |

© 2013 Wakely Associates, Inc./ Architects

# ENLARGED DEMOLITION PLAN

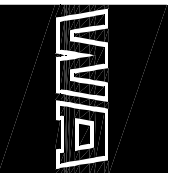
SCALE: 1/4"=1'-0"

|  |                  |
|--|------------------|
|                                       |                  |
| WAKELY ASSOCIATES, INC./ ARCHITECTS  |                  |
| 30500 Van Dyke Avenue, Suite M-7,<br>Warren, Michigan 48093<br>PH: 586.573.4100<br>FX: 586.573.0822<br>www.wakelyala.com |                  |
| Addendum No. 1<br>Warren Woods Public Schools<br>Tower High School<br>POHI Toilet Renovations                            |                  |
| SCALE: NONE  |                  |
| DRAWN BY:  | PROJECT NO.:     |
| JSM  | 131480           |
| APPROVED BY:   | REFERENCE SHEET: |
| RS   | A1.1             |
| DATE:  | SHEET NO.:       |
| MAY 28, 2013   | A01-SK-1         |

© 2013 Wakely Associates, Inc./ Architects

# ENLARGED DEMOLITION PLAN

SCALE: 1/4"=1'-0"

|   |              |   |          |
|---|--------------|---|----------|
|  <b>WAKELY ASSOCIATES, INC./ ARCHITECTS</b><br>30500 Van Dyke Avenue, Suite M-7,<br>Warren, Michigan 48093<br>PH: 586.573.4100<br>FX: 586.573.0822<br><a href="http://www.wakelyala.com">www.wakelyala.com</a> |              | <b>Addendum No. 1</b><br><b>Warren Woods Public Schools</b><br><b>Tower High School</b><br><b>POH1 Toilet Renovations</b><br><b>SCALE: NONE</b> |          |
| DRAWN BY:   | JSM          | PROJECT NO.:  | 131480   |
| APPROVED BY:  | RS           | REFERENCE SHEET:  | A1.1     |
| DATE:   | MAY 28, 2013 | SHEET NO.:  | A01-SK-1 |

© 2013 Wakely Associates, Inc./ Architects

The figure is a detailed architectural drawing titled "ENLARGED DEMOLITION PLAN". It shows a rectangular building footprint divided into several sections by dashed lines. Numbered hexagons (1 through 10) indicate the sequence of demolition. Key dimensions are provided: 5'-3 1/4" at the top left, 5'-2' at the top center, 2'-4" at the top right, 2'-0" in two central areas, 10'-11" and 3'-8" in the lower middle, and 6'-3/4" at the bottom corners. Section cut symbols are placed around the perimeter: R at the top left corner, R1A along the top edge, S along the right edge, 8A along the left edge, and 8 at the bottom left corner.

# ENLARGED DEMOLITION PLAN

SCALE: 1/4"=1'-0"

|  |                          |
|--|--------------------------|
|  |                          |
| WAKELY ASSOCIATES, INC./ ARCHITECTS<br>30500 Van Dyke Avenue, Suite M-7,<br>Warren, Michigan 48093<br>PH: 586.573.4100<br>FX: 586.573.0822<br>www.wakelyva.com |                          |
| Addendum No. 1<br>Warren Woods Public Schools<br>Tower High School<br>POH1 Toilet Renovations<br>SCALE: NONE   |                          |
| DRAWN BY:<br>JSM   | PROJECT NO.:<br>131480   |
| APPROVED BY:<br>RS   | REFERENCE SHEET:<br>A1.1 |
| DATE:<br>MAY 28, 2013  | SHEET NO.:<br>A01-SK-1   |


© 2013 Wakely Associates, Inc./ Architects

An architectural drawing titled "ENLARGED DEMOLITION PLAN". It shows a detailed floor plan of a building with various rooms and structural elements. The plan includes numerous numbered callouts (1 through 10) indicating specific areas or components to be demolished. Dimensions are provided for several key areas, such as 5'-3 1/4", 5'-2", 2'-4", 2'-0", 10'-11", and 3'-8". Section cut symbols are placed around the perimeter: R at the top left, R1A at the top center, S at the top right, 8A at the bottom left, and 8 at the bottom center. A north arrow is located in the upper right corner.

A circular graphic containing a north arrow pointing towards the top of the sheet. To the right of the circle is the text "1/A-1.1".

# ENLARGED DEMOLITION PLAN

SCALE: 1/4"=1'-0"

|   |                  |   |
|---|------------------|---|
|  <b>WAKELY ASSOCIATES, INC./ ARCHITECTS</b><br>30500 Van Dyke Avenue, Suite M-7,<br>Warren, Michigan 48093<br>PH: 586.573.4100<br>FX: 586.573.0822<br><a href="http://www.wakelyva.com">www.wakelyva.com</a> |                  | <b>Addendum No. 1</b><br><b>Warren Woods Public Schools</b><br><b>Tower High School</b><br><b>POH1 Toilet Renovations</b><br><b>SCALE: NONE</b> |
| DRAWN BY:   | PROJECT NO.:     |   |
| JSM   | 131480           |   |
| APPROVED BY:  | REFERENCE SHEET: |   |
| RS  | A1.1             |   |
| DATE:   | SHEET NO.:       |   |
| MAY 28, 2013  | A01-SK-1         |   |