

Warren Consolidated Schools

Secure Entrance Improvements

1 - Green Acres Elementary School

4655 Holmes, Warren, MI 48092

2 - Holden Elementary School

37565 Calka, Sterling Heights, MI 48310

3 - Harwood Elementary School

4900 Southlawn, Sterling Heights, MI 48310

4 - Hatherly Elementary School

35201 Davison, Sterling Heights, MI 48310

5 - Jefferson Elementary School

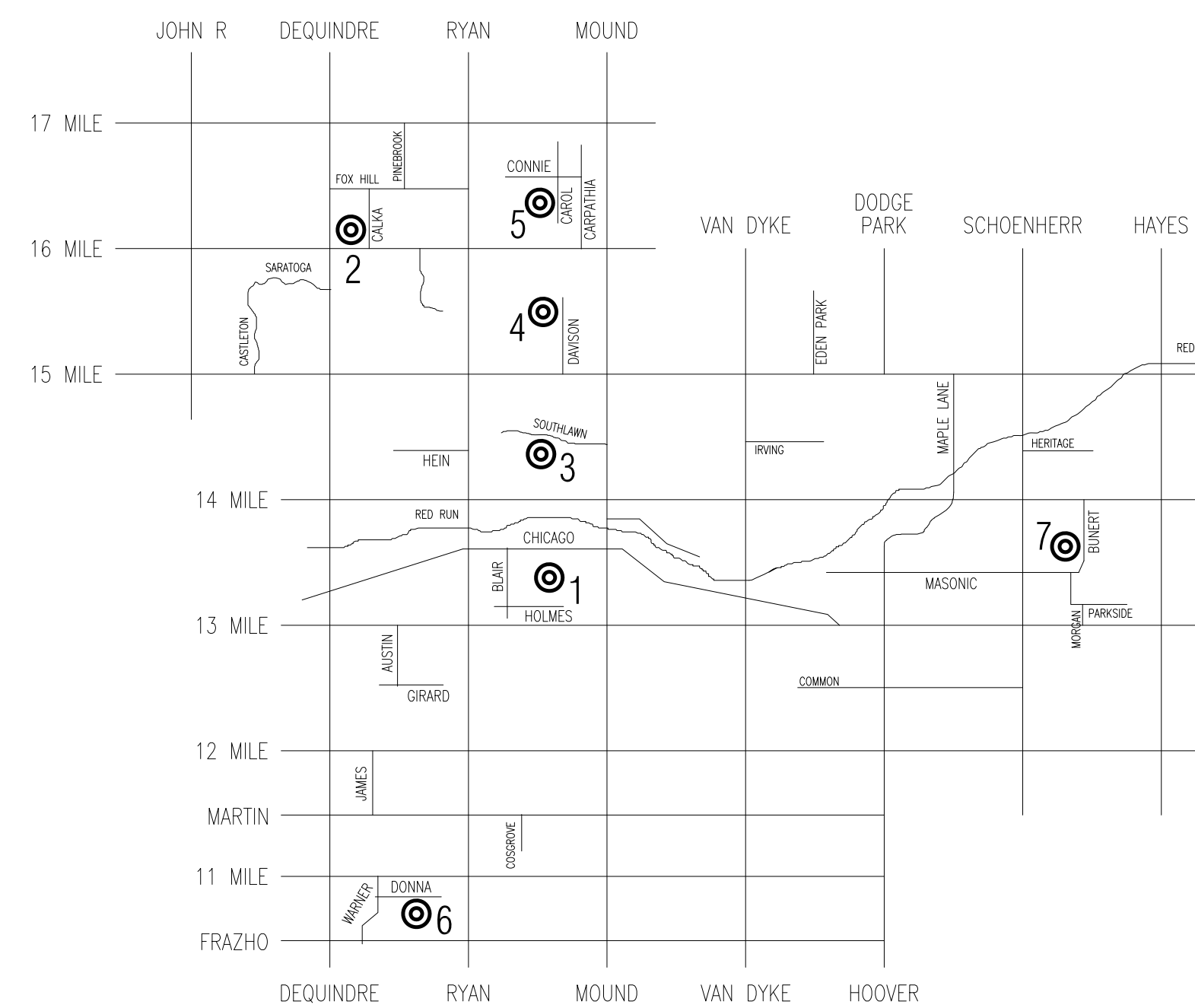
37555 Carol Drive, Sterling Heights, MI 48310

6 - Siersma Elementary School

3100 Donna, Warren, MI 48091

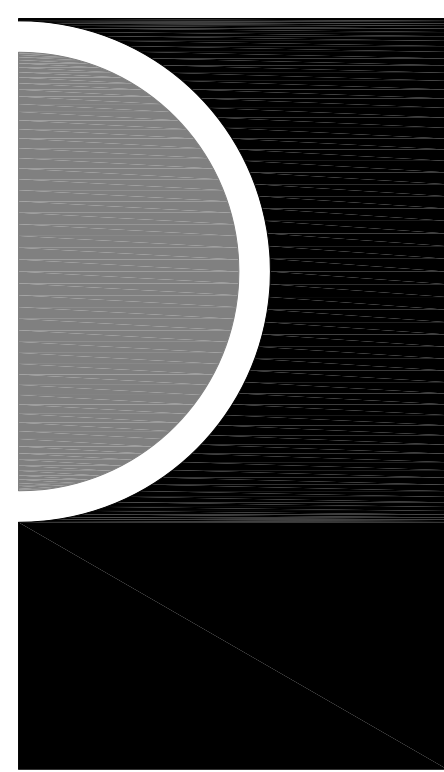
7 - Wilde Elementary School

32343 Bunert, Warren, MI 48088



List of Drawings	
Sheet Number	Sheet Title
Architectural	
A0-00	Cover Sheet
A0-01	General Project Information
A1-01	Composite Floor Plans & Information
A1-02	Composite Floor Plans & Information
A1-03	Door Schedule and Details
A3-01	Green Acres Elementary Plans
A3-02	Holden Elementary Plans
A3-03	Harwood Elementary Plans
A3-04	Hatherly Elementary Plans
A3-05	Jefferson Elementary Plans
A3-06	Siersma Elementary Plans
A3-07	Wilde Elementary Plans
E1-01	Electrical Specifications

PARTNERS



PARTNERS in Architecture, PLC

65 Market Street
Mount Clemens, MI 48043
586-469-3600
(Fax) 586-469-3607
www.partnersinarch.com

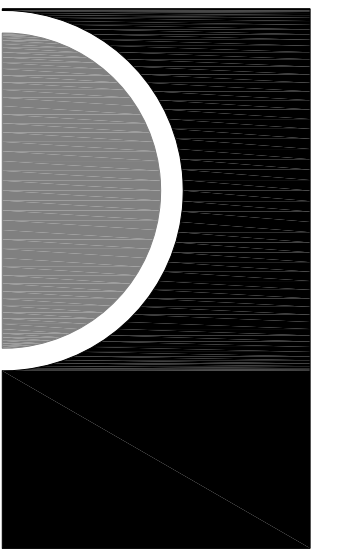
Owner
Warren Consolidated Schools

31300 Anita
Warren, MI 48093
(Phone) 586-698-4446
(Fax) 586-698-4457
www.wcs.k12.mi.us/

Mechanical / Electrical Engineer Consultant:
MA Engineering

200 E. Brown Street
Birmingham, MI 48009
(Phone) 248-258-1610
(Fax) 248-258-9538

PARTNERS



PARTNERS in Architecture, PLC
65 MARKET STREET
MOUNT CLEMENS, MI 48043
P 586.469.3600
F 586.469.3607

Statement of Intellectual Property

The Ideas, concepts, drawings and thoughts conveyed herein are the intellectual property of PARTNERS in Architecture, PLC, 65 Market Street, Mount Clemens, MI 48043 (P 586.469.3600). This set of drawings, in whole or in part, may not be reproduced, without the written consent of PARTNERS in Architecture, PLC. This information is protected under U.S. Copyright Law, all rights reserved.

© Copyright 2013

LOCATION MAP

OWNER

Warren
Consolidated Schools

PROJECT NAME

Secure Entrance
Improvements

PROJECT NO.

12-157

ISSUE DATE

OWNER REVIEW 3/26/2013
BIDDING / CONSTRUCTION 4/2/2013

PROFESSIONAL SEAL

Abbreviations

A	AFF ABOVE FINISHED FLOOR	F	FWP FABRIC WRAPPED PANEL	M	MAG MAGNETIC	R	ROOF DRAIN
ACCT ABOVE REFERENCE FLOOR	FC FACE OF CONCRETE	FBC FACED BRICK	FAC FACE OF CONCRETE	MF MARBLE	MH MARBLE THRESHOLD	RS ROOF SUMP	RS ROOF SUMP
ACF ACCESS PANEL	FF FACTORY FINISH	FE FIRE EXTINGUISHER	FAF FAR SIDE	MR MARBLE	MT MET	ROOF ROOM	RFG ROOF ROOM
ACD ACoustICAL	FS FARE SIDE	FEH FIRE EXTINGUISHER CABINET	FEH FIRE EXTINGUISHER CABINET	MTR MARBLE THRESHOLD	MEH MASONRY OPENING	ROOF OPENING	RMO ROOF OPENING
ACT ACT	FT FLOOR TO	FEV FIRE VALVE CABINET	FR FINISHED	MAS MAS	MAO MASONRY	ROOF RUBER	ROR ROOF RUBER
ADD ADDITIONAL	FT FINISHED	FEV FIRE VALVE CABINET	FR FINISHED	MAS MAS	MAO MASONRY	RUBER RUBER	RUR RUBER
ADU ADJACENT	FE FIRE EXTINGUISHER	FVC FLOOR VALVE CABINET	FR FINISHED	MECH MECHANICAL	MAO MASONRY	RUR RUBER	RUR RUBER
AGG AGGREGATE	FEV FIRE EXTINGUISHER CABINET	FV FIRE VALVE	FR FINISHED	MEC MECHANICAL	MAT MAT	SS SERVICE SINK	SSE SERVICE SINK
A/C AIR CONDITIONING	FEV FIRE VALVE CABINET	FV FIRE VALVE	FR FINISHED	MEC MECHANICAL	MAT MAT	SS SERVICE SINK	SSE SERVICE SINK
AL ALUMINUM	FV FIRE VALVE	FV FIRE VALVE	FR FINISHED	MEC MECHANICAL	MAT MAT	SS SERVICE SINK	SSE SERVICE SINK
ANCH ANCHOR	FV FIRE VALVE	FV FIRE VALVE	FR FINISHED	MEC MECHANICAL	MAT MAT	SS SERVICE SINK	SSE SERVICE SINK
ANCH ANCHOR BOLT	FV FIRE VALVE	FV FIRE VALVE	FR FINISHED	MEC MECHANICAL	MAT MAT	SS SERVICE SINK	SSE SERVICE SINK
ANOD ANODIZED	FV FIRE VALVE	FV FIRE VALVE	FR FINISHED	MEC MECHANICAL	MAT MAT	SS SERVICE SINK	SSE SERVICE SINK
ARCH ARCHITECTURAL	FV FIRE VALVE	FV FIRE VALVE	FR FINISHED	MEC MECHANICAL	MAT MAT	SS SERVICE SINK	SSE SERVICE SINK
ASPH ASPHALT	FV FIRE VALVE	FV FIRE VALVE	FR FINISHED	MEC MECHANICAL	MAT MAT	SS SERVICE SINK	SSE SERVICE SINK
AUTO AUTOMATIC	FV FIRE VALVE	FV FIRE VALVE	FR FINISHED	MEC MECHANICAL	MAT MAT	SS SERVICE SINK	SSE SERVICE SINK

Graphic Symbols

Drawing A5-03 A1-03	DETAIL NUMBER DETAIL TITLE DRAWING SCALE SHEET NUMBER FROM WHICH DRAWING IS REFERENCED ADDL. SHEET(S) FROM WHICH DRAWING IS REFERENCED	1	WALL TYPE SYMBOL INDICATES WALL TYPE DESIGNATION - REFER TO WALL TYPE DRAWINGS FOR ADDL. INFO. SHEET A0-04
A8-03	DETAIL NUMBER DARKENED ARROW INDICATES ELEVATED WALL SHEET NUMBER WHERE ELEVATION IS LOCATED NOTE: ELEVATION SYMBOL USED FOR INTERIOR & EXTERIOR ELEVATIONS.	100	LOBBY ROOM NUMBER
REF. FLR. EL. 00'-0"	NOTE: SYMBOL INDICATES A SPECIFIC HEIGHT IN AN ELEVATION OR SECTION VIEW	1	GENERAL NOTE
8'-0"	HEIGHT OF FINISHED CEILING ABOVE FINISHED FLOOR IN AN ELEVATION OR SECTION VIEW	1	KEY NOTE SYMBOL INDICATES WORK AS DESCRIBED IN KEYNOTE LIST ON SAME DRAWING SHEET AS KEYNOTE OCCURS
3'-6"	HEIGHT OF FINISHED CEILING ABOVE FINISHED FLOOR IN A PLAN VIEW	20'-0" MBD	OVERALL LENGTH OF BOARD DESIGNATION OF TACKBOARD (TBO) OR MARKERBOARD (MBO) OR SLIDING MARKER BOARD (SMBO)
1 A3-02	DETAIL NUMBER SHEET NUMBER WHERE SECTION IS LOCATED NOTE: SECTION SYMBOL USED FOR WALL & BUILDING SECTIONS.	1	ELEVATION VIEW - SEE MOUNTING HEIGHT SCHEDULE BELOW

Text Symbols

△ ANGLE	⊞ PLATE
⊞ CENTERLINE	⊞ ROUND
⊞ CHANNEL	⊞ AND
⊞ PERPENDICULAR	⊞ AT

Line Type Designation

— EXISTING ITEM TO REMAIN
- - - - - EXISTING ITEM TO BE REMOVED
— · — · — · — NEW ITEM AS NOTED

Material Poche Indications

CONCRETE (SECTION)	GYPSUM WALL BOARD	WOOD/SOLID SPECIES (FINISH MATERIAL) (NOTE MATERIAL)
CONC. STONE, PLASTER (ELEVATION) (NOTE MATERIAL)	PLASTER GYPSUM/CEMENTITIOUS ON METAL LATH (NOTE MATERIAL)	WOOD (CONTINUOUS BLOCKING)
STONE (MARBLE STONE) (GRANITE, ETC.) (SECTION/ELEVATION) (NOTE MATERIAL)	INSULATION/ACOUSTIC/THERMAL (NOTE TYPE)	SHIM MATERIAL (WOOD, METAL, ETC.) (NOTE MATERIAL)
GRAVEL/STONE (GRAVEL/SUB-BASE MATERIAL)	JOINT FILLER	PLYWOOD/PARTICLE BOARD (WEAKER FINISH) (NOTE MATERIAL)
SAND/GRAVEL (SUB-BASE MATERIAL)	C.M.U. (CONCRETE BLOCK)	CARPET
	C.M.U. - SOLID OR GROUT SOLID CELLS	
	BRICK	INSULATION/ACOUSTIC/THERMAL (NOTE TYPE)
	STEEL/COFFER METAL, ALUMINUM, ETC. (NOTE MATERIAL)	
	C.M.U. (BURNEISHED)	
	GYPSUM WALL	

Ceiling Symbols Legend

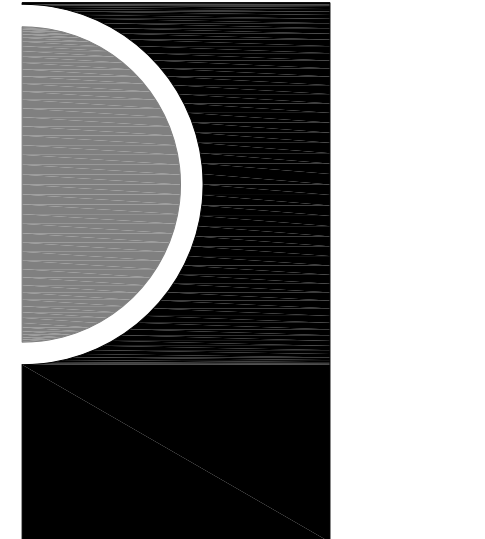
	5/8" GYP BD ON 3/8" METAL STUD CONSTRUCTION AT 16" O.C. SECURE TO STRUCTURE ABOVE AT 48" O.C. MAX EACH WAY
	2" X 4" LAY-IN FLUORESCENT FIXTURE IN GRID
	2" X 2" LAY-IN FLUORESCENT FIXTURE IN GRID
	RECESSED ROUND LIGHT FIXTURE CEILING OR WALL MOUNTED
	EXIT LIGHTS - CEILING & WALL MOUNTED
	SPEAKER - CEILING AND WALL MOUNTED
	SMOKE DETECTOR
	SUPPLY AIR DIFFUSER (MECHANICAL)
	RETURN AIR GRILLE (MECHANICAL)
	SPRINKLER HEAD - CEILING AND WALL MOUNTED REF. SPECIFICATIONS FOR DIFFERENT TYPES

W13	W14
W15	W16
W17	W18
W19	W20
W21	W22
W23	W24
W25	W26
W27	W28
W29	W30
W31	W32
W33	W34
W35	W36
W37	W38
W39	W40
W41	W42
W43	W44
W45	W46
W47	W48
W49	W50
W51	W52
W53	W54
W55	W56
W57	W58
W59	W60

Mounting Height Schedule

WALL MOUNTED ACCESSORIES		PLUMBING FIXTURES and TOILET ACCESSORIES	
W1	W2	W3	W4
W5	W6	W7	W8
W9	W10	W11	W12
W13	W14	W15	W16
W17	W18	W19	W20
W21	W22	W23	W24
W25	W26	W27	W28
W29	W30	W31	W32
W33	W34	W35	W36
W37	W38	W39	W40
W41	W42	W43	W44
W45	W46	W47	W48
W49	W50	W51	W52
W53	W54	W55	W56
W57	W58	W59	W60

PARTNERS



PARTNERS in Architecture, PLC
65 MARKET STREET
MOUNT CLEMENS, MI 48043
P 586.463.3600
F 586.463.3607

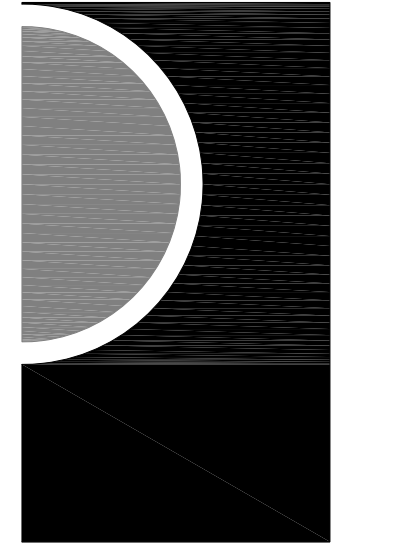
Statement of Intellectual Property
The ideas, concepts, drawings and thoughts conveyed herein are the intellectual property of PARTNERS in Architecture, PLC, 65 Market Street, Mount Clemens, MI 48043 (P 586.463.3600). This set of drawings, in whole or in part, may not be reproduced, without the written consent of PARTNERS in Architecture, PLC. This information is protected under U.S. Copyright Law. All rights reserved.

© Copyright 2013
CONSULTANT

OWNER

Warren Consolidated Schools
PROJECT NAME
Secure Entrance Improvements
PROJECT NO.
12-157
ISSUES / REVISIONS
Owner Review 3/26/2013
Bidding / Construction 4/2/2013
DRAWN BY
CHECKED BY
APPROVED BY

GENERAL PROJECT INFORMATION



PARTNERS in Architecture, PLC
 65 MARKET STREET
 MOUNT CLEMENS, MI 48043
 P 586.469.3600
 F 586.469.3607

Statement of Intellectual Property
 The ideas, concepts, drawings and thoughts conveyed herein are the intellectual property of PARTNERS in Architecture, P.L.C. 65 Market Street, Mount Clemens, MI 48043 (P 586.469.3600). This set of drawings, in whole or in part, may not be reproduced, without the written consent of PARTNERS in Architecture, P.L.C. This information is protected under U.S. Copyright Law, all rights reserved.

© Copyright 2013

CONSULTANT

KEY PLAN

OWNER

Warren Consolidated Schools

PROJECT NAME

Secure Entrance Improvements

PROJECT NO.

12-157

ISSUES / REVISIONS

Owner Review 3/26/2013
 Bidding / Construction 4/2/2013

DRAWN BY

CHECKED BY

APPROVED BY

SHEET NAME

COMPOSITE FLOOR PLANS

SHEET NO.

A1-01

PROJECT DESCRIPTION

PROPOSED IMPROVEMENTS INVOLVE THE CREATION OF A SECURE ENTRANCE VESTIBULE AT EACH OF THE BUILDINGS INDICATED. THE EXISTING EGRESS CAPACITY AND TRAVEL DISTANCE REMAIN UNCHANGED.

LEGEND

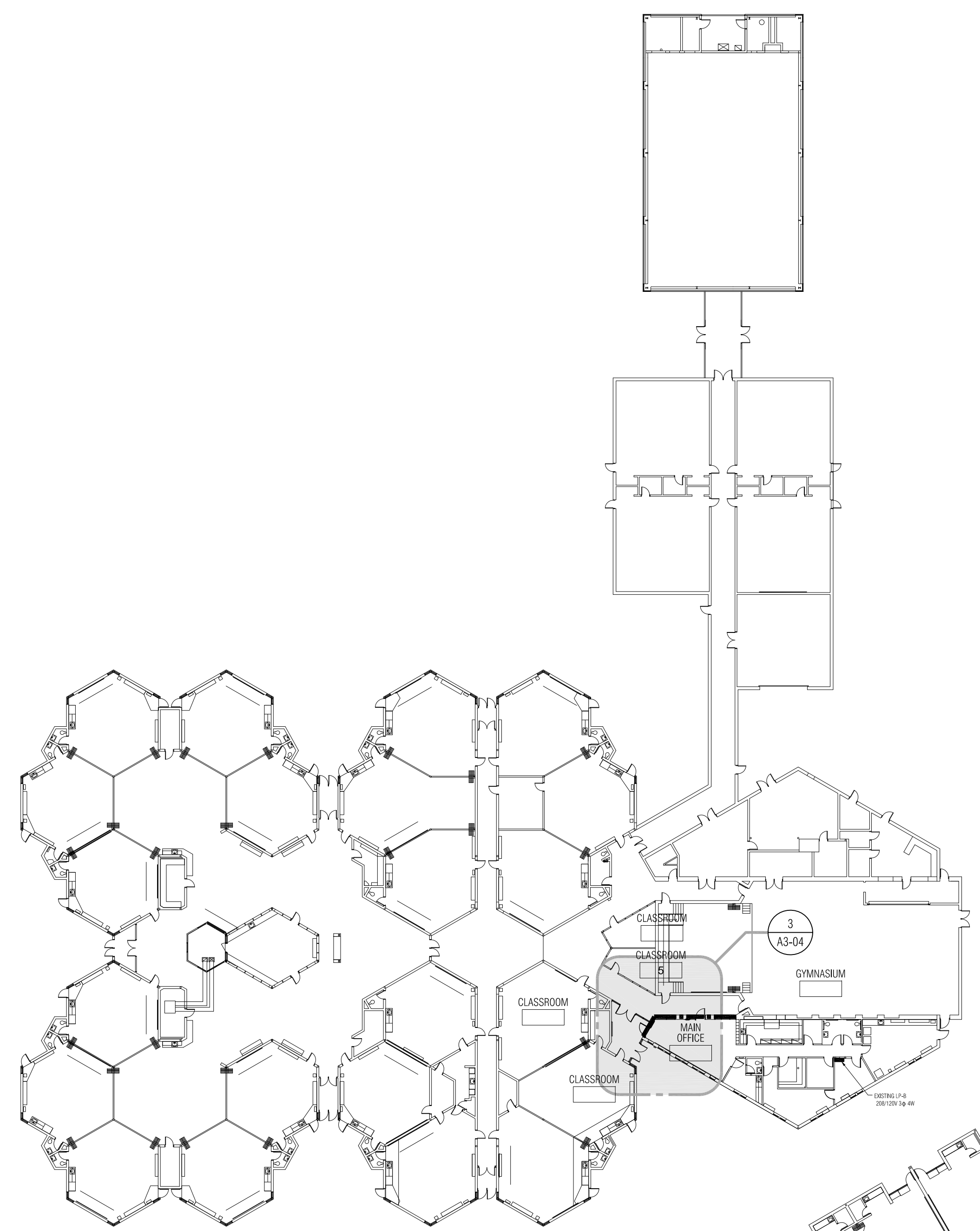
--- EXISTING (1) HOUR FIRE RATED CONSTRUCTION. NEW DOORS & FRAMES TO HAVE A MINIMUM 45 MINUTE FIRE RATING

DEMO FLOOR PLAN - GENERAL NOTES:

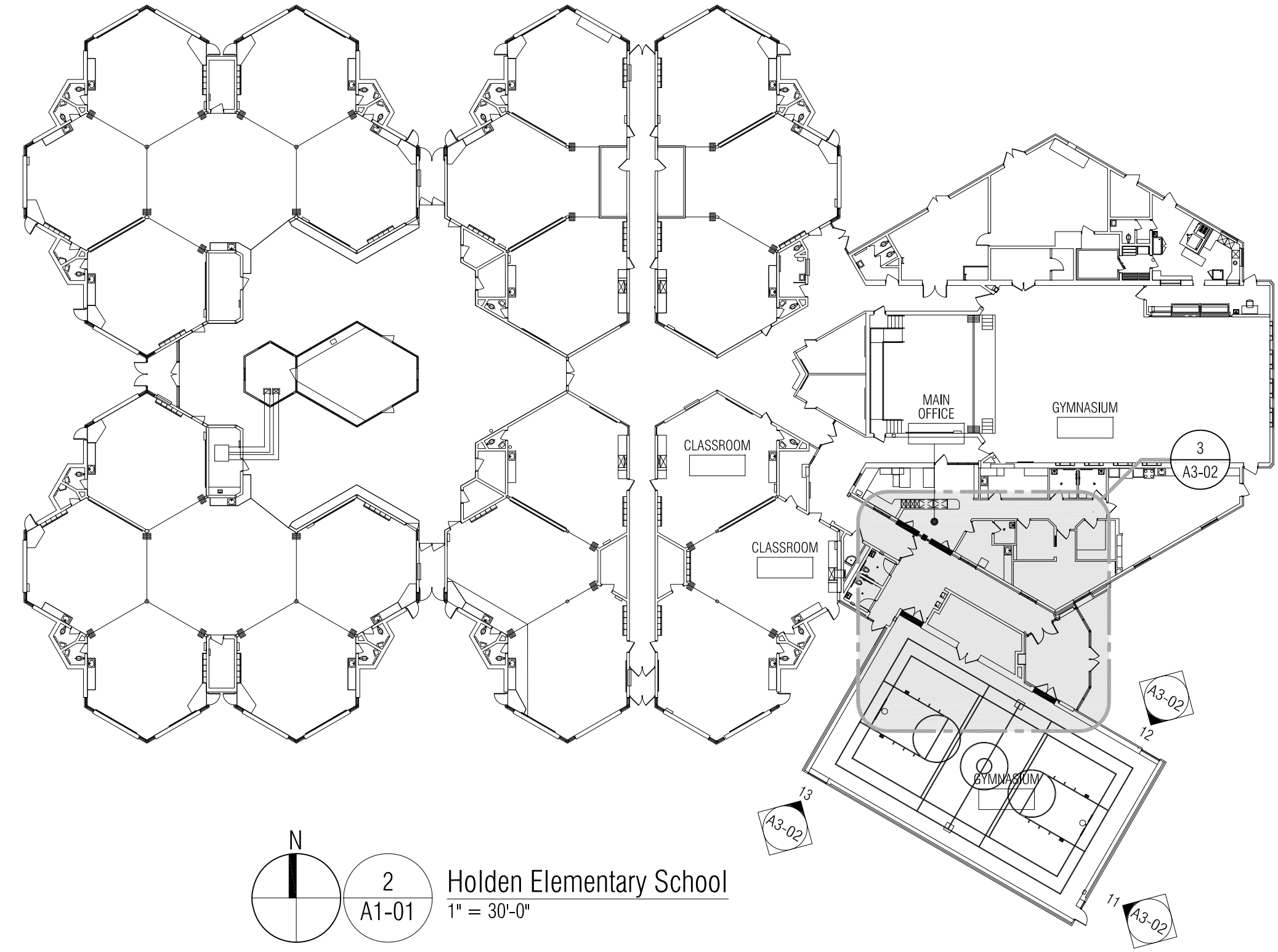
- A. ALL DEMOLITION DRAWINGS AND DEMOLITION DETAILS ARE PROVIDED TO SHOW THE GENERAL SCOPE OF THE DEMOLITION WORK. IT IS EACH CONTRACTOR'S RESPONSIBILITY TO PERFORM ALL DEMOLITION WORK NECESSARY TO ACCOMPLISH THE SCOPE OF THEIR WORK. THE DEMOLITION DRAWINGS AND DETAILS MAY NOTE TYPICAL ITEMS IN SOME AREAS, WHICH APPLY IN OTHER AREAS (AND ARE DESIGNATED WITH DASHED, HIDDEN OR STRUCK THRU LINES). COORDINATE ALL DEMOLITION WORK WITH ALL ARCHITECTURAL, MECH. AND ELEC. DRAWINGS. CONTRACTOR IS RESPONSIBLE TO REFERENCE ALL DRAWINGS/SPECIFICATIONS TO CONFIRM EXTENT OF DEMOLITION WORK.
- B. REMOVE ALL UNUSED WALL ANCHOR INSERTS AND SEALANT AT REMOVED FRAMES COMPLETE. CLEAN MASONRY TO MATCH EXISTING MASONRY FINISH. PATCH ANCHOR HOLES IN MORTAR JOINTS WITH MASONRY MORTAR AND JOINT PATTERN TO MATCH EXISTING.
- C. ALL CONSTRUCTION AND DEMOLITION MEANS, METHODS AND SAFETY PRECAUTIONS SHALL BE THE SOLE RESPONSIBILITY OF EACH CONTRACTOR.
- D. EACH CONTRACTOR IS RESPONSIBLE FOR FIELD VERIFYING AND UNDERSTANDING EXISTING CONDITIONS PRIOR TO BIDDING.
- E. IF ANY SUSPECTED HAZARDOUS MATERIAL IS ENCOUNTERED, STOP WORK IN THAT AREA AND IMMEDIATELY INFORM OWNER.
- F. DISPOSE OF ALL DEMOLITION MATERIALS LEGALLY OFF-SITE U.N.O.

NEW WORK FLOOR PLAN - GENERAL NOTES:

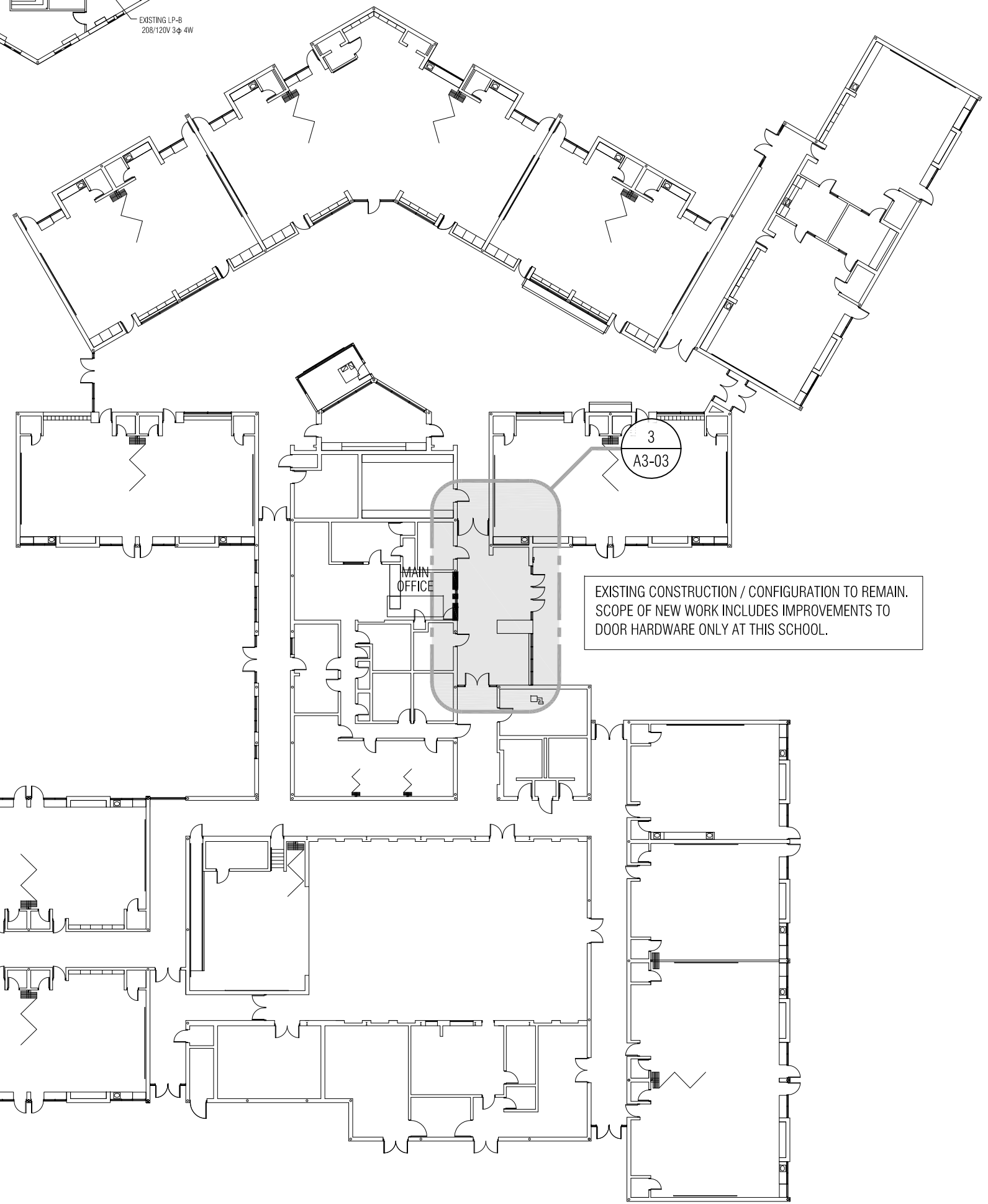
- A. ALL PLAN DIMENSIONS ARE NOMINAL TO FACE OF WALL. WALL THICKNESSES ARE SHOWN NOMINAL - SEE WALL TYPES FOR ACTUAL THICKNESS.
- B. DO NOT SCALE DRAWINGS. USE DIMENSIONS PROVIDED. IF A CONFLICT IS ENCOUNTERED OR A REQUIRED DIMENSION IS NOT PROVIDED, REQUEST A CLARIFICATION FROM THE ARCHITECT.
- C. EXISTING MASONRY WALL INTERSECTIONS WHICH ARE LEFT EXPOSED AFTER DEMOLITION OF ADJACENT MASONRY CONSTRUCTION MUST BE PATCHED AND REPAIRED WITH NEW MASONRY OR EXISTING BRICK VENEER, TOOTH-IN TO MATCH EXISTING COURSING AND BOND PATTERN.
- D. REFER TO GENERAL PROJECT INFORMATION FOR ABBREVIATIONS AND OTHER SYMBOL DEFINITIONS.
- E. FIELD VERIFY ALL EXISTING OPENINGS TO RECEIVE NEW WORK PRIOR TO FABRICATION OF ANY FRAME TYPES - NOTIFY ARCHITECT OF ANY DISCREPANCIES.



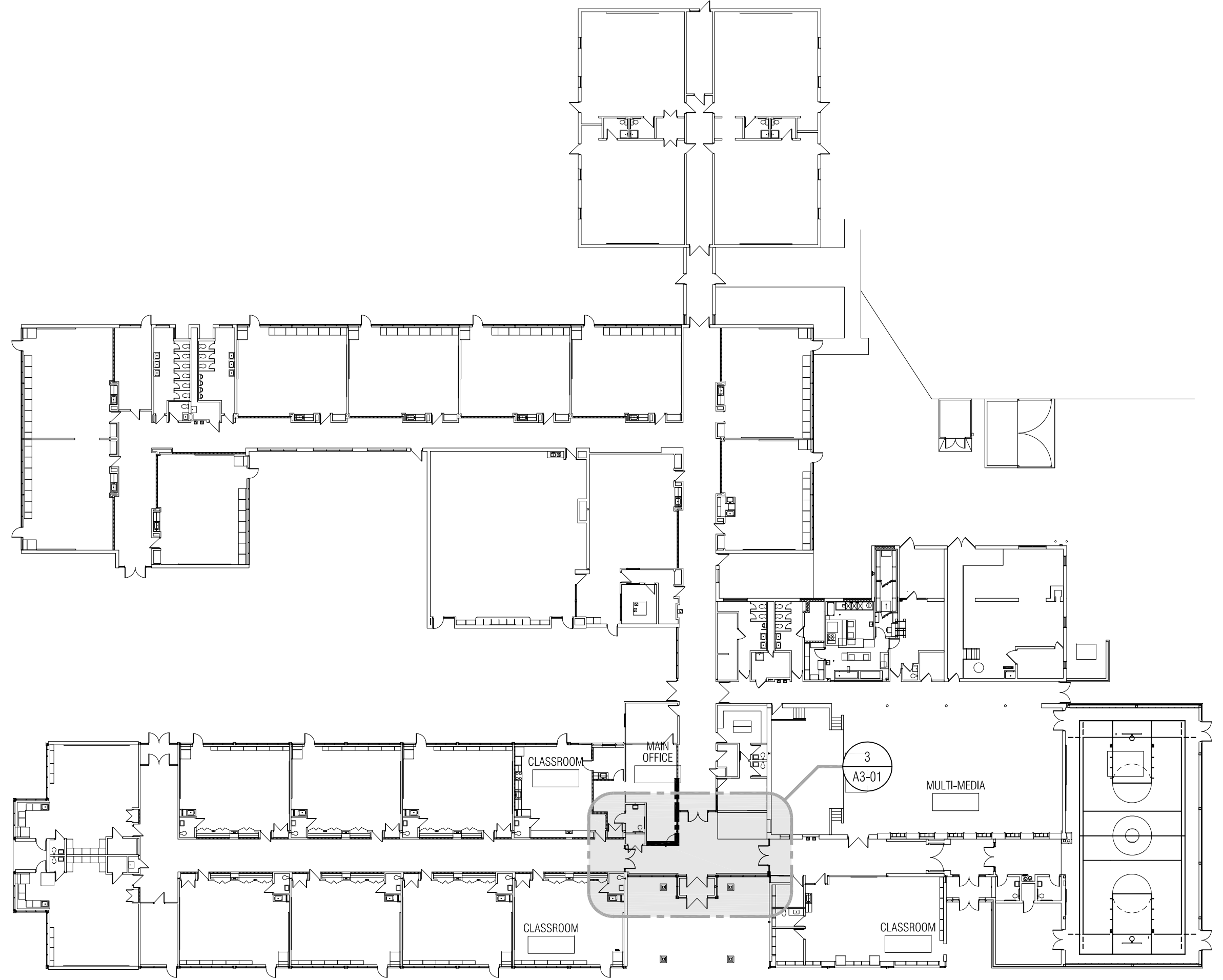
4 Hatherly Elementary School
 1" = 30'-0"



2 Holden Elementary School
 1" = 30'-0"

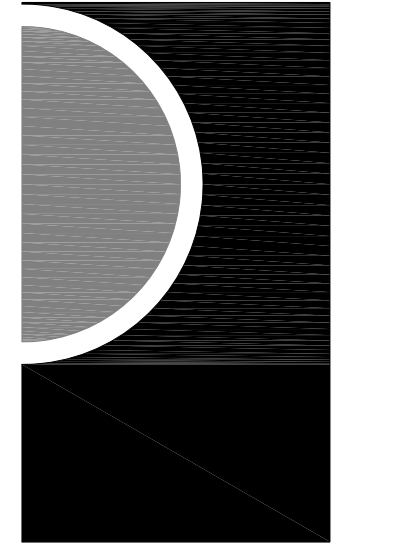


3 Harwood Elementary School
 1" = 30'-0"



1 Green Acres Elementary School
 1" = 30'-0"

EXISTING CONSTRUCTION / CONFIGURATION TO REMAIN. SCOPE OF NEW WORK INCLUDES IMPROVEMENTS TO DOOR HARDWARE ONLY AT THIS SCHOOL.



PARTNERS in Architecture, PLC
 65 MARKET STREET
 MOUNT CLEMENS, MI 48043
 P 586.469.3600
 F 586.469.3607

Statement of Intellectual Property
 The ideas, concepts, drawings and thoughts conveyed herein are the intellectual property of PARTNERS in Architecture, P.L.C. 65 Market Street, Mount Clemens, MI 48043 (P 586.469.3600). This set of drawings, in whole or in part, may not be reproduced, without the written consent of PARTNERS in Architecture, P.L.C. This information is protected under U.S. Copyright Law, all rights reserved.
 © Copyright 2013

CONSULTANT

KEY PLAN

OWNER

Warren Consolidated Schools

PROJECT NAME

Secure Entrance Improvements

PROJECT NO.

12-157

ISSUES / REVISIONS

Owner Review 3/26/2013
 Bidding / Construction 4/2/2013

DRAWN BY

CHECKED BY

APPROVED BY

SHEET NAME

COMPOSITE FLOOR PLANS

SHEET NO.

A1-02

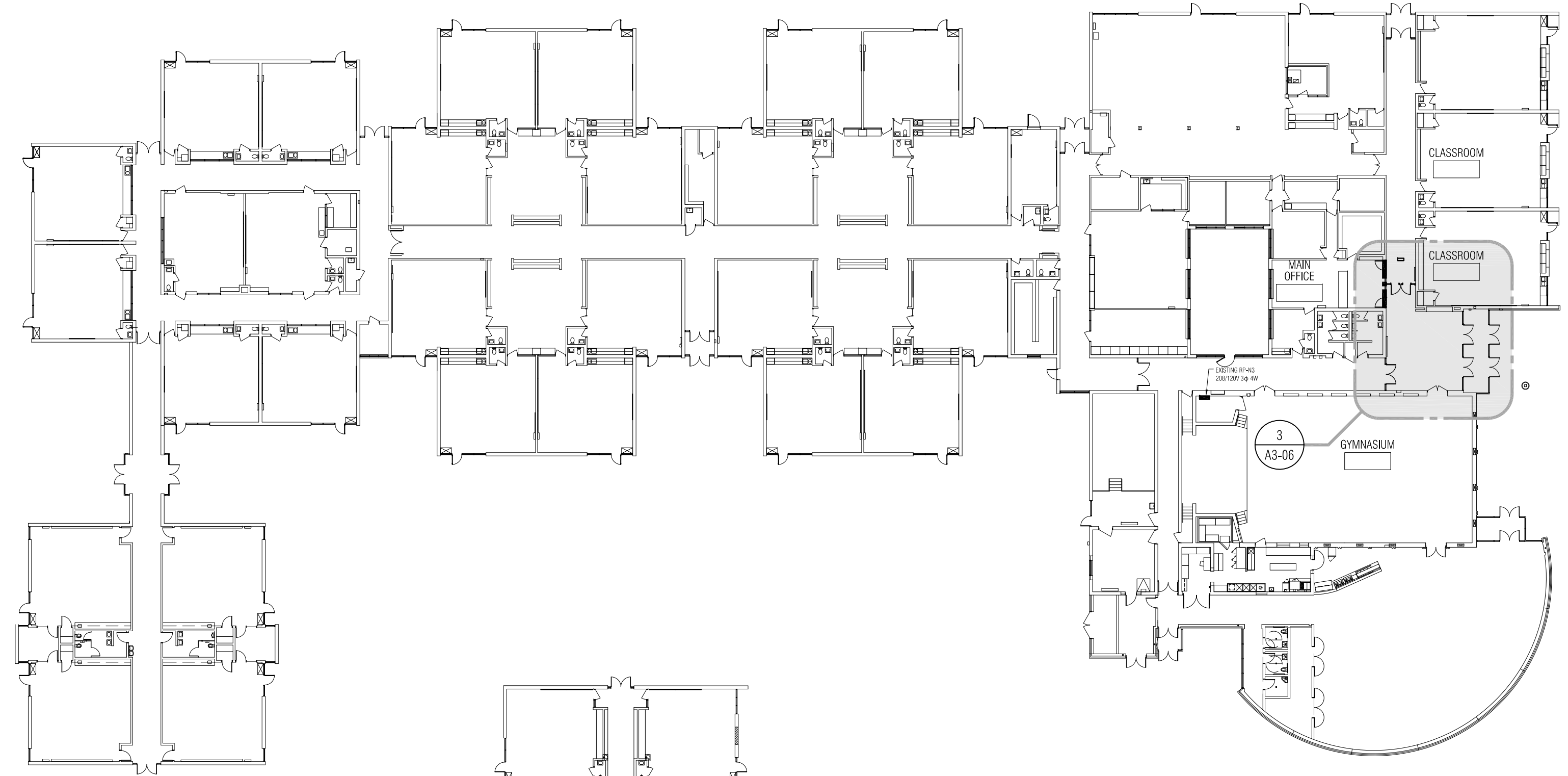
PROJECT DESCRIPTION
PROPOSED IMPROVEMENTS INVOLVE THE CREATION OF A SECURE ENTRANCE VESTIBULE AT EACH OF THE BUILDINGS INDICATED. THE EXISTING EGRESS CAPACITY AND TRAVEL DISTANCE REMAIN UNCHANGED.
LEGEND
EXISTING (1) HOUR FIRE RATED CONSTRUCTION. NEW DOORS & FRAMES TO HAVE A MINIMUM 45 MINUTE FIRE RATING

DEMO FLOOR PLAN - GENERAL NOTES:

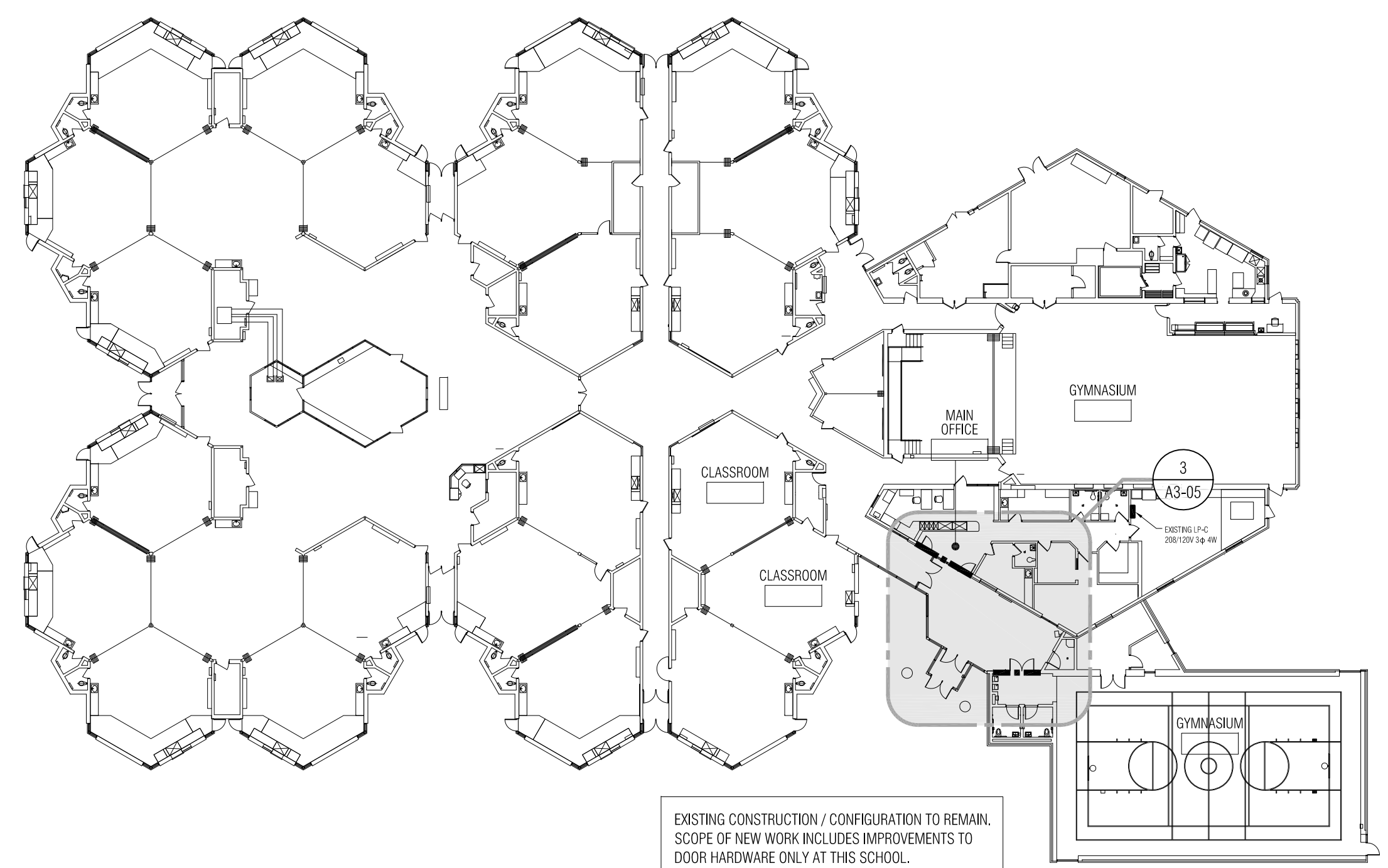
- A. ALL DEMOLITION DRAWINGS AND DEMOLITION DETAILS ARE PROVIDED TO SHOW THE GENERAL SCOPE OF THE DEMOLITION WORK. IT IS EACH CONTRACTOR'S RESPONSIBILITY TO PERFORM ALL DEMOLITION WORK NECESSARY TO ACCOMPLISH THE SCOPE OF THEIR WORK. THE DEMOLITION DRAWINGS AND DETAILS MAY NOTE TYPICAL ITEMS IN SOME AREAS, WHICH APPLY IN OTHER AREAS (AND ARE DESIGNATED WITH DASHED, HIDDEN OR STRUCK THRU LINES). COORDINATE ALL DEMOLITION WORK WITH ALL ARCHITECTURAL, MECH. AND ELEC. DRAWINGS. CONTRACTOR IS RESPONSIBLE TO REFERENCE ALL DRAWINGS/SPECIFICATIONS TO CONFIRM EXTENT OF DEMOLITION WORK.
- B. REMOVE ALL UNUSED WALL ANCHOR INSERTS AND SEALANT AT REMOVED FRAMES COMPLETE. CLEAN MASONRY TO MATCH EXISTING MASONRY FINISH. PATCH ANCHOR HOLES IN MORTAR JOINTS WITH MASONRY MORTAR AND JOINT PATTERN TO MATCH EXISTING.
- C. ALL CONSTRUCTION AND DEMOLITION MEANS, METHODS AND SAFETY PRECAUTIONS SHALL BE THE SOLE RESPONSIBILITY OF EACH CONTRACTOR.
- D. EACH CONTRACTOR IS RESPONSIBLE FOR FIELD VERIFYING AND UNDERSTANDING EXISTING CONDITIONS PRIOR TO BIDDING.
- E. IF ANY SUSPECTED HAZARDOUS MATERIAL IS ENCOUNTERED, STOP WORK IN THAT AREA AND IMMEDIATELY INFORM OWNER.
- F. DISPOSE OF ALL DEMOLITION MATERIALS LEGALLY OFF-SITE U.N.O.

NEW WORK FLOOR PLAN - GENERAL NOTES:

- A. ALL PLAN DIMENSIONS ARE NOMINAL TO FACE OF WALL. WALL THICKNESSES ARE SHOWN NOMINAL - SEE WALL TYPES FOR ACTUAL THICKNESS.
- B. DO NOT SCALE DRAWINGS. USE DIMENSIONS PROVIDED. IF A CONFLICT IS ENCOUNTERED OR A REQUIRED DIMENSION IS NOT PROVIDED, REQUEST A CLARIFICATION FROM THE ARCHITECT.
- C. EXISTING MASONRY WALL INTERSECTIONS WHICH ARE LEFT EXPOSED AFTER DEMOLITION OF ADJACENT MASONRY CONSTRUCTION MUST BE PATCHED AND REPAIRED WITH NEW MASONRY OR EXISTING BRICK VENEER. TOOTH-IN TO MATCH EXISTING COURSING AND BOND PATTERN.
- D. REFER TO GENERAL PROJECT INFORMATION FOR ABBREVIATIONS AND OTHER SYMBOL DEFINITIONS.
- E. FIELD VERIFY ALL EXISTING OPENINGS TO RECEIVE NEW WORK PRIOR TO FABRICATION OF ANY FRAME TYPES - NOTIFY ARCHITECT OF ANY DISCREPANCIES.

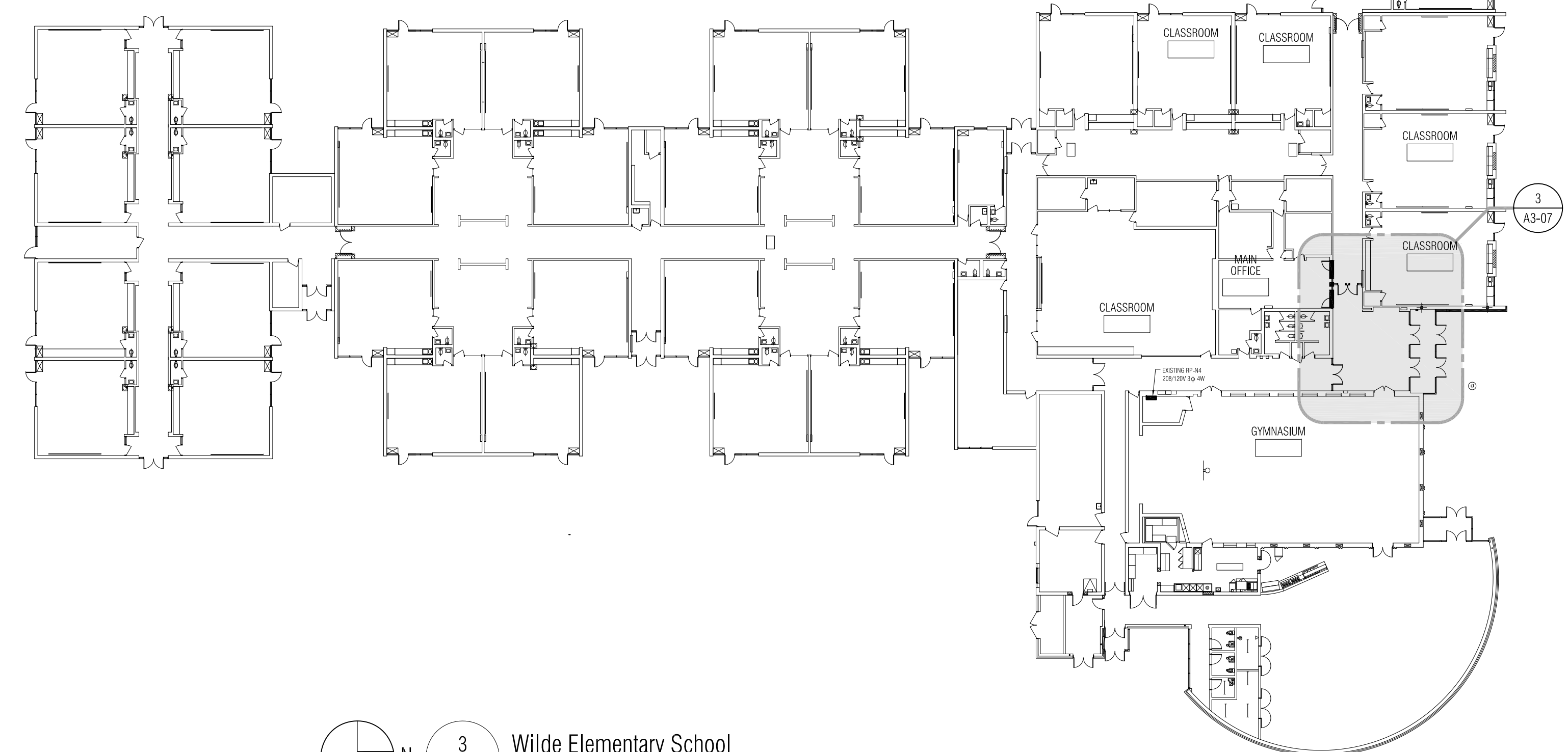


2 Siersma Elementary School
 1" = 30'-0"

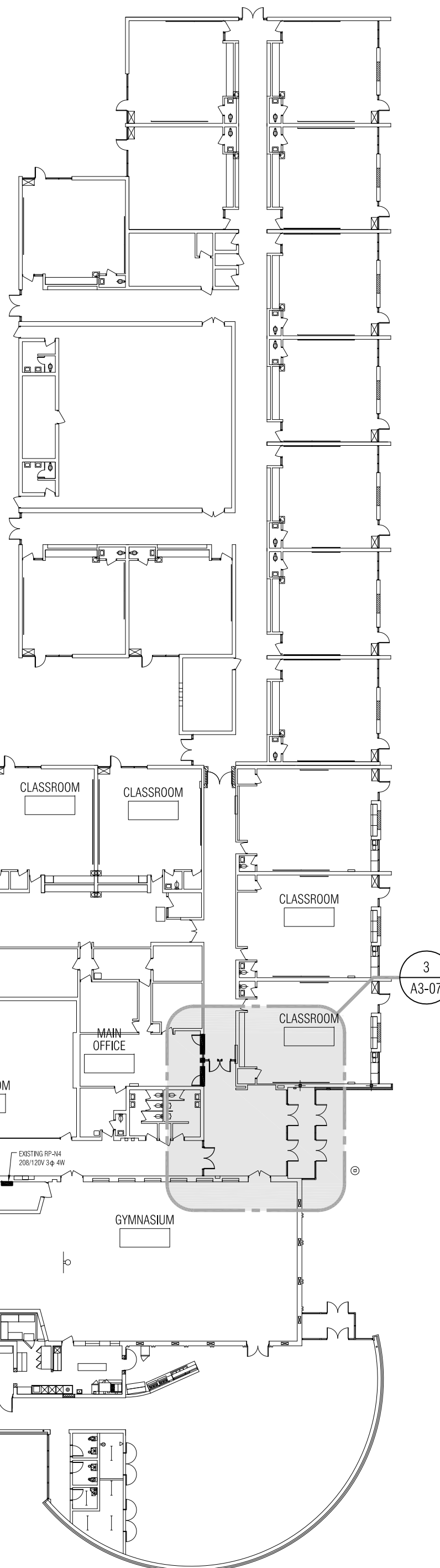


EXISTING CONSTRUCTION / CONFIGURATION TO REMAIN. SCOPE OF NEW WORK INCLUDES IMPROVEMENTS TO DOOR HARDWARE ONLY AT THIS SCHOOL.

1 Jefferson Elementary School
 1" = 30'-0"

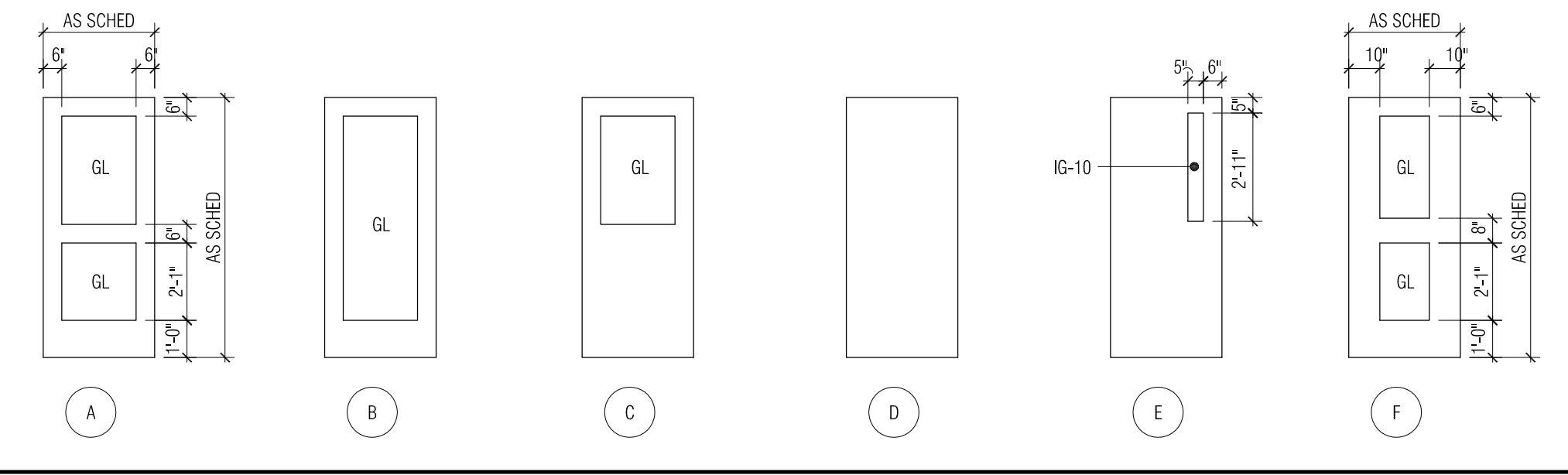


3 Wilde Elementary School
 1" = 30'-0"

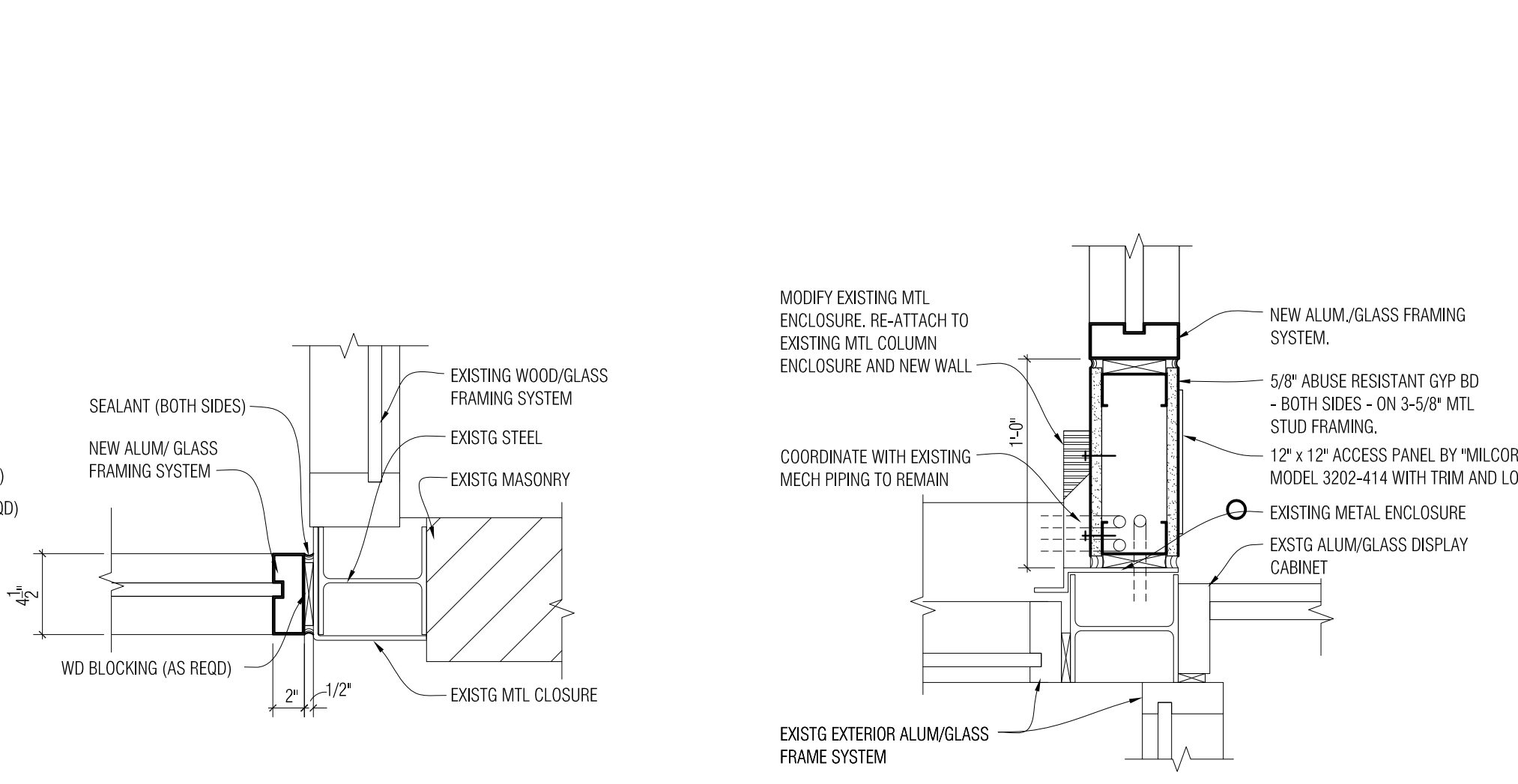


3 A3-07

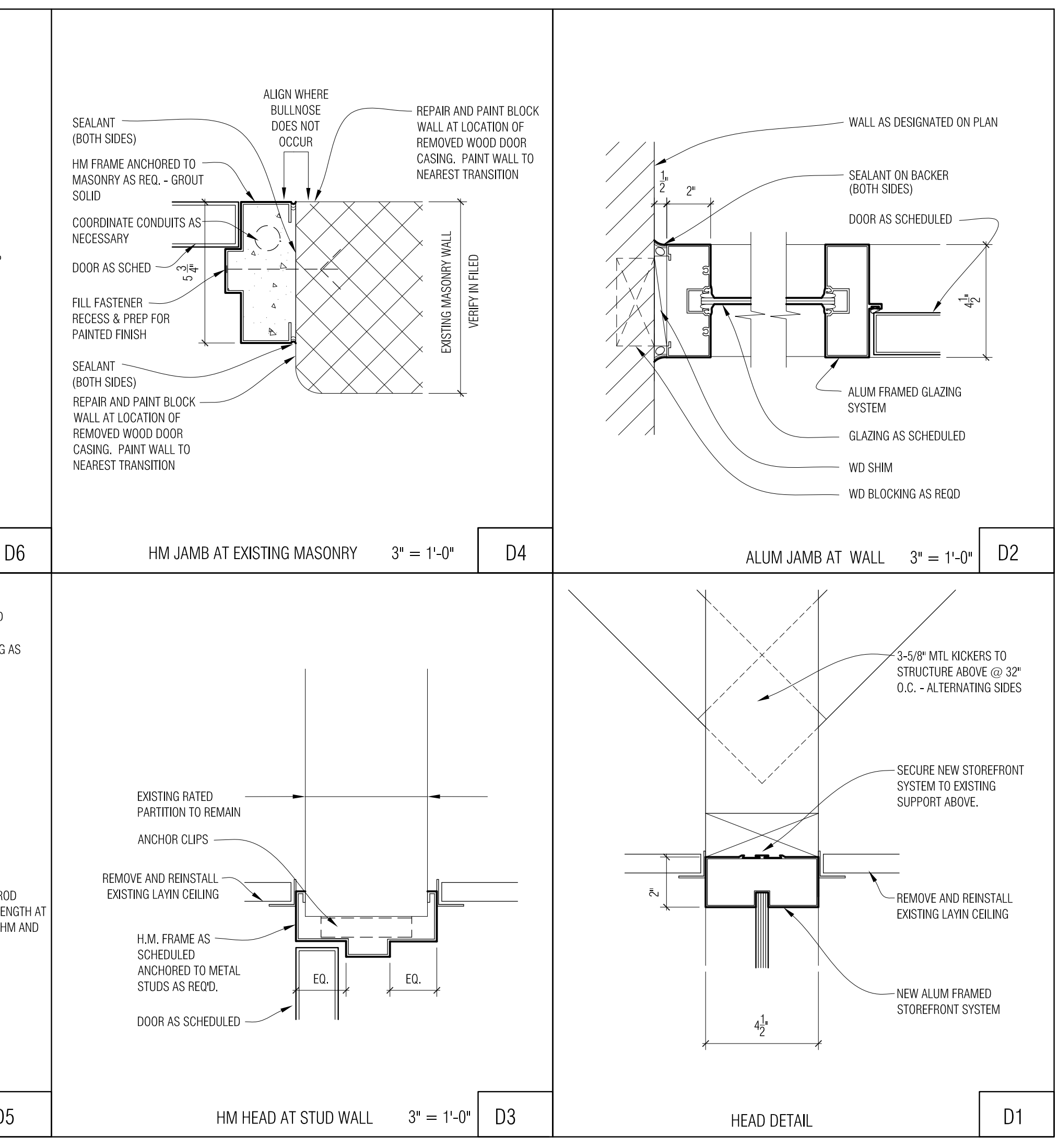
Door Types



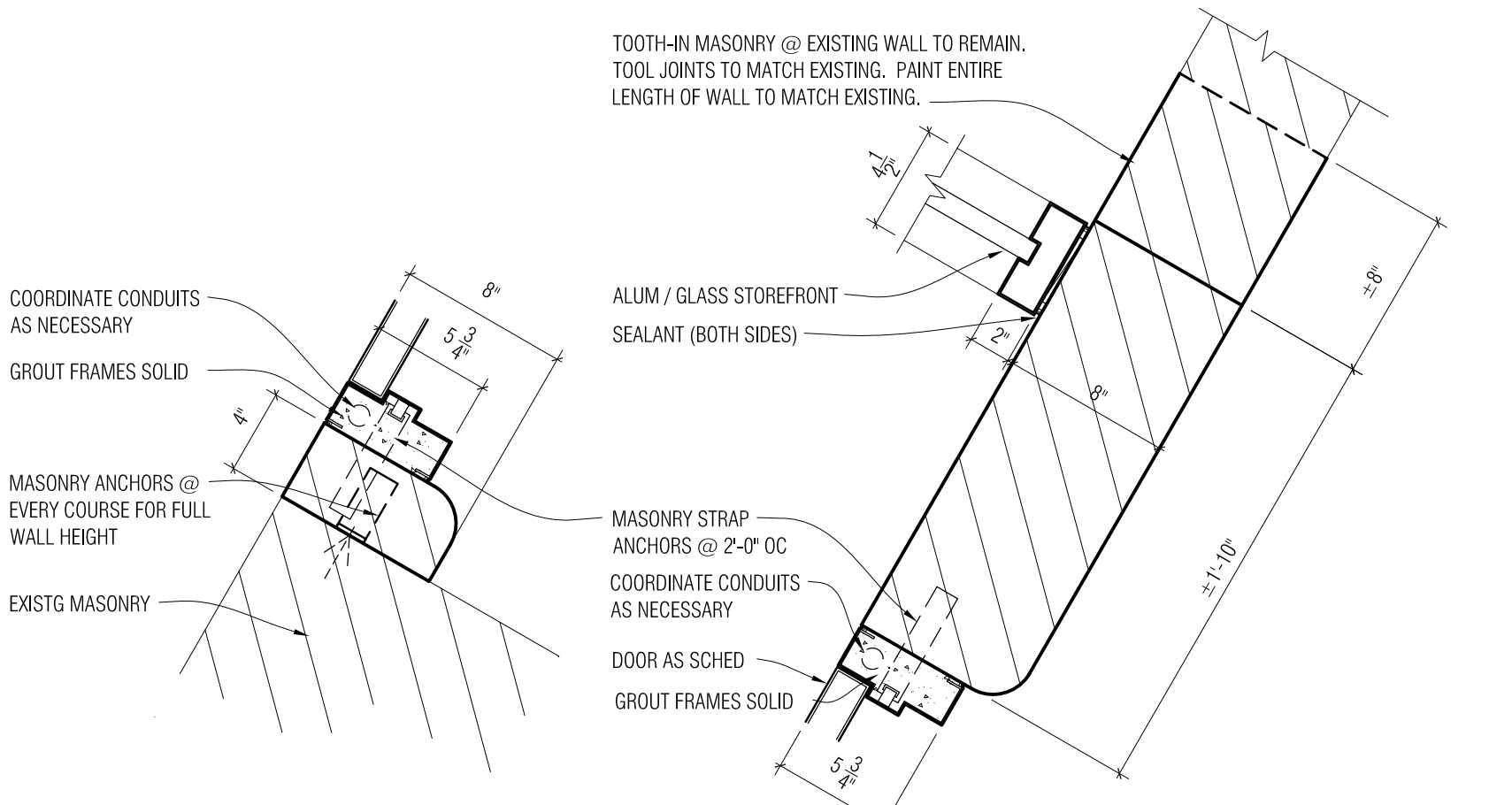
Hollow Metal Frame Types



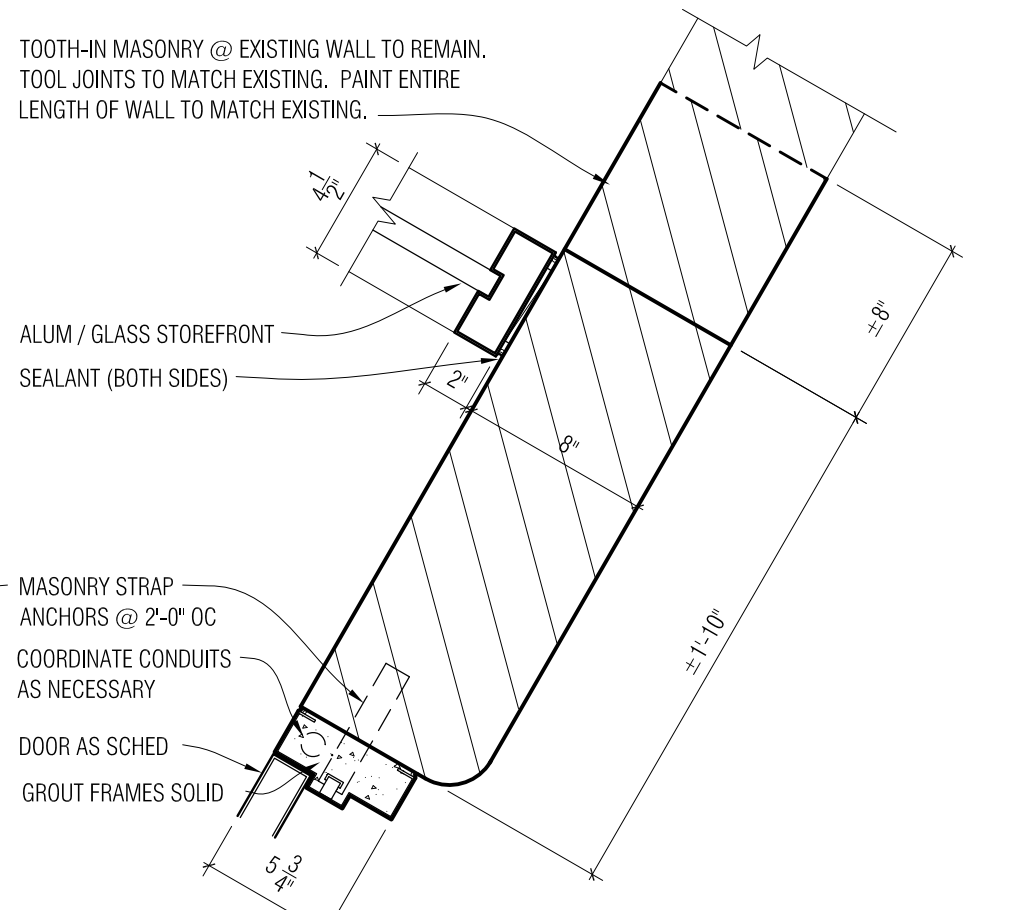
1 A3-01 1-1/2" = 1'-0"
 2 A3-01 1-1/2" = 1'-0"
 3 A3-01 1-1/2" = 1'-0"
 4 A3-02 1-1/2" = 1'-0"
 5 A3-02 1-1/2" = 1'-0"



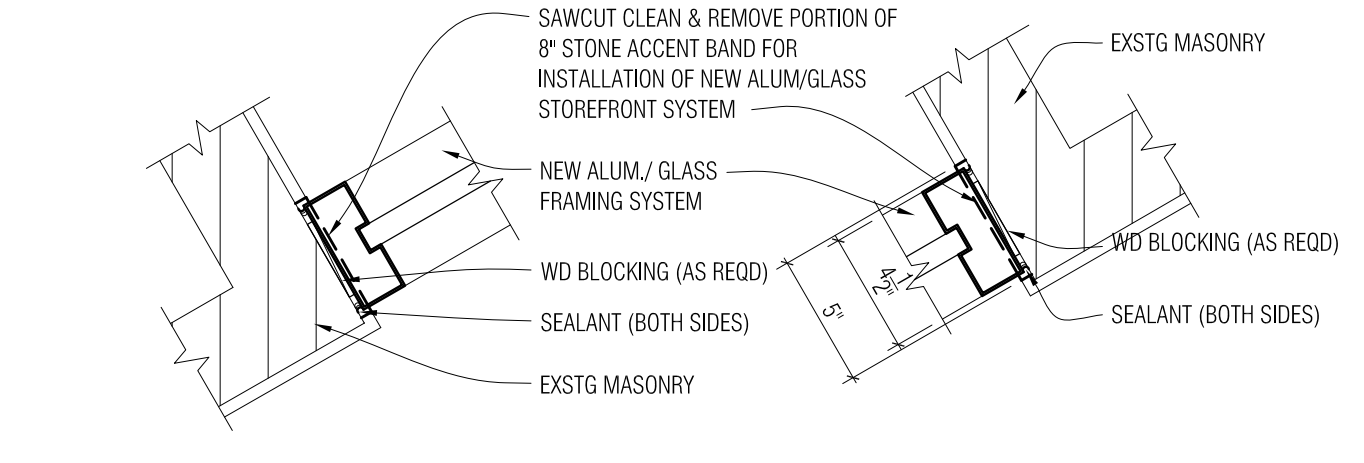
D1 HEAD DETAIL
 D2 ALUM JAMB AT WALL 3" = 1'-0"
 D3 HM HEAD AT STUD WALL 3" = 1'-0"
 D4 HM JAMB AT EXISTING MASONRY 3" = 1'-0"
 D5 HM / ALUM JAMB CONNECTION 3" = 1'-0"



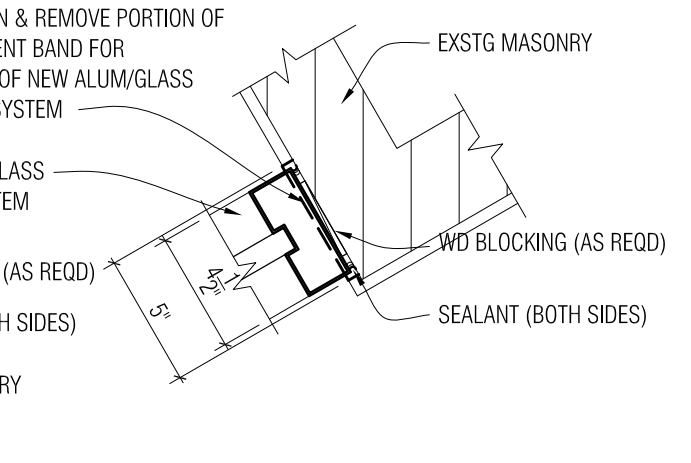
7 A3-04 Plan Detail
 1-1/2" = 1'-0"



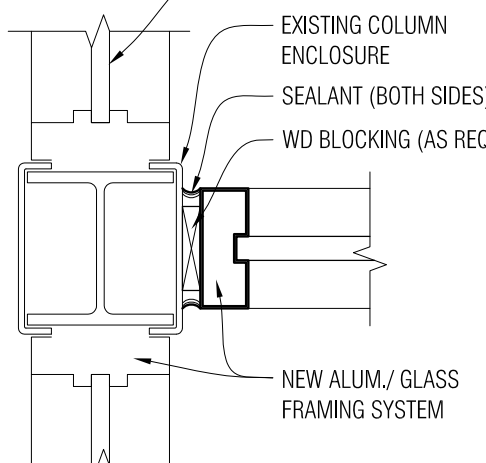
6 A3-04 Plan Detail
 1-1/2" = 1'-0"



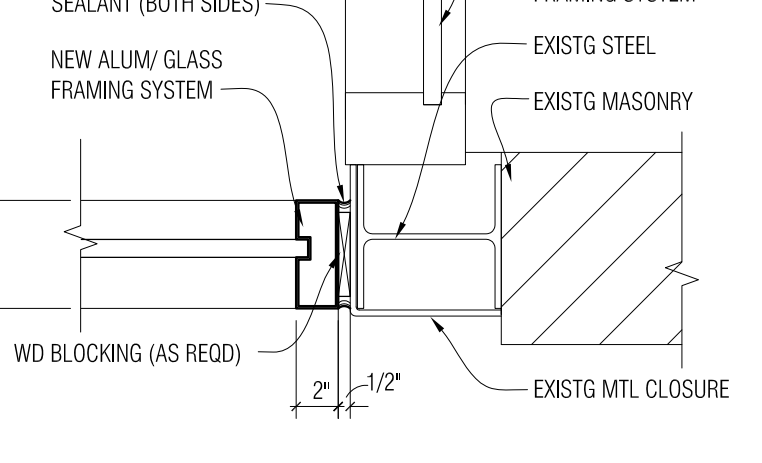
5 A3-02 Plan Detail
 1-1/2" = 1'-0"



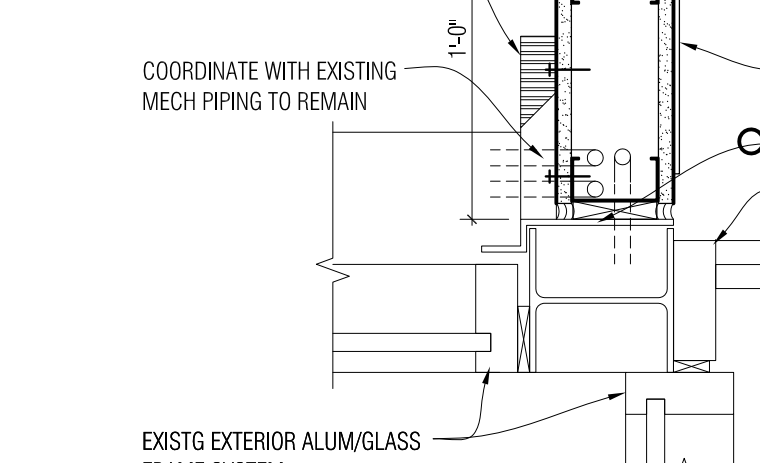
4 A3-02 Plan Detail
 1-1/2" = 1'-0"



3 A3-01 Plan Detail
 1-1/2" = 1'-0"



2 A3-01 Plan Detail
 1-1/2" = 1'-0"



1 A3-01 Plan Detail
 1-1/2" = 1'-0"

Opening Schedule

OPENING NO.	OPENING SIZE	DOOR			FRAME			DETAILS		THRES.	LABEL	HOWE GROUP	REMARKS
		TYPE	MAT.	FINISH	TYPE	MAT.	FINISH	HEAD	JAMB				
GREEN ACRES ELEMENTARY													
G100.1	ETR	B	AL	ETR	ETR	AL	ETR	--	--	--	--	01	1, 3
G101.1	(2) 3'-0" x 7'-0"	A	AL		7/A3-01	AL		D1	--	--	--	02	1, 3
G101.2	(2) 3'-0" x 7'-0"	A	AL		8/A3-01	AL		D1	--	--	--	02	1, 3
G101.3	(2) 3'-0" x 7'-0"	A	AL		9/A3-01	AL		--	D2	--	--	02	1, 3
G102.1	ETR	C	WD	ETR	ETR	HM	ETR	--	--	--	ETR	03	1, 3
HOLDEN ELEMENTARY													
L100.1	(2) 3'-0" x 8'-0"	A	AL		7/A3-02	AL		--	--	--	--	04	1, 3, 7
L100.2	ETR	E(SIM)	WD	ETR	ETR	HM	ETR	--	--	--	ETR	05	2, 3, 4
L101.1	ETR	E(SIM)	WD	ETR	ETR	HM	ETR	--	--	--	ETR	10	2, 3
L101.2	ETR	A(SIM)	WD	ETR	ETR	HM	ETR	--	--	--	--	--	--
L102.1	ETR	A(SIM)	WD	ETR	ETR	HM	ETR	--	--	--	ETR	03	1, 3
L102.2	ETR	A(SIM)	WD	ETR	ETR	HM	ETR	--	--	--	ETR	03	1, 3
HARWOOD ELEMENTARY													
R100.1	ETR	A(SIM)	AL	ETR	ETR	AL	ETR	--	--	--	--	06	1, 3
R101.1	ETR	E(SIM)	HM	ETR	ETR	HM	ETR	--	--	--	--	12	1
R101.2	ETR	A(SIM)	AL	ETR	ETR	AL	ETR	--	--	--	--	12	1
R102.1	ETR	D	WD	ETR	ETR	HM	ETR	--	--	--	ETR	03	1, 3
HATHERLY ELEMENTARY													
T100.1	ETR	B	AL	ETR	ETR	AL	ETR	--	--	--	--	07	1, 3
T101.1	EXISTG RELOCATED	B	AL		7/A3-04	AL		--	--	--	--	08	3
T103.1	3'-0" x 7'-0"	F	WD		8/A3-04	HM		--	--	--	45 09	1, 3, 6	
T103.2	ETR	E(SIM)	HM	ETR	ETR	HM	ETR	--	--	--	ETR	09	1, 3
JEFFERSON ELEMENTARY													
J100.1	ETR	A(SIM)	AL	ETR	ETR	AL	ETR	--	--	--	--	07.1	1, 3
J101.1	ETR	A(SIM)	AL	ETR	ETR	AL	ETR	--	--	--	--	--	--
J101.2	ETR	E(SIM)	WD	ETR	ETR	HM	ETR	--	--	--	ETR	05	2, 3, 4
J102.1	ETR	A(SIM)	WD	ETR	ETR	HM	ETR	--	--	--	ETR	03	1, 3
J102.2	ETR	A(SIM)	WD	ETR	ETR	HM	ETR	--	--	--	ETR	03	1, 3
J131.1	ETR	E	HM	ETR	ETR	HM	ETR	--	--	--	--	13	1, 3, 5
SIERSMA ELEMENTARY													
S100.1	ETR	B	AL	ETR	ETR	AL	ETR	--	--	--	--	07	1, 3
S101.1	EXISTG RELOCATED	B	AL		8/A3-06	AL		--	--	--	--	11	3
S101.2	(2) 3'-0" x 8'-2"	A	AL		9/A3-06	AL		--	--	--	--	02	1, 3, 7
S101.3	ETR	E(SIM)	WD	ETR	ETR	HM	ETR	--	--	--	--	05	2, 3, 4
S104.1	3'-0" x 7'-0"	F	HM		7/A3-06	HM		--	--	--	45 09	1, 3	
S104.2	3'-0" x 7'-0"	F	HM		7/A3-06	HM		--	--	--	45 09	1, 3	
WILDE ELEMENTARY													
W100.1	ETR	B	AL	ETR	ETR	AL	ETR	--	--	--	--	07	1, 3
W101.1	EXISTG RELOCATED	B	AL		8/A3-07	AL		--	--	--	--	11	3
W101.2	(2) 3'-0" x 8'-2"	B	AL		9/A3-07	AL		--	--	--	--	02	1, 3, 7
W101.3	ETR	E(SIM)	WD	ETR	ETR	HM	ETR	--	--	--	--	05	2, 3, 4
W104.1	3'-0" x 7'-0"	F	HM		7/A3-07	HM		--	--	--	45 09	1, 3	
W104.2	3'-0" x 7'-0"	F	HM		7/A3-07	HM		--	--	--	45 09	1, 3	

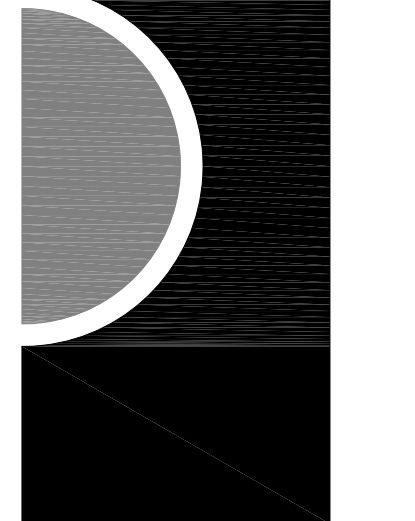
Door Schedule Remarks

- REMOTE DOOR ACCESS
- 15 SECOND DELAYED AUDIO ALARM (DOOR LEFT OPEN)
- CARD ACCESS CONTROL
- PULL HARDWARE TO BE REMOVED
- INSTALL NEW DOOR LITE TRIM KIT & 1" INSULATED GLAZING AS SPECIFIED IN EXISTING INSULATED HOLLOW METAL DOOR.
- PROVIDE 4" DOOR HEAD. REMOVE MASONRY TO STRUCTURE ABOVE. VERIFY DIMENSION IN FIELD PRIOR TO FABRICATION.
- COORDINATE EXACT HEIGHT OF DOOR IN FIELD WITH EXISTING CONDITIONS.

Door Information

- ALL DOOR SIZES SCHEDULED ARE BASED ON ACTUAL FRAME OPENINGS. SIZES NOTED ON SCHEDULE ARE CLEAR JAMB TO JAMB FRAME DIMENSIONS AND FROM REFERENCE FLOOR LINE TO HEAD FRAME OPENING. DIMENSION TOLERANCES MUST BE CONSIDERED FOR FLOORING MATERIALS TO ACTUAL DOOR DIMENSIONS.
- ALL HOLLOW METAL AND WOOD DOORS INCLUDING ALL FIRE LABELED DOORS SHALL HAVE SPECIAL INTERNAL BLOCKING TO ALLOW SURFACE MOUNTED CLOSURES AND OTHER HARDWARE TO BE CONNECTED TO THE DOORS WITHOUT THE USE OF THROUGH BOLTS.
- ALL DOOR NUMBERS ARE THE SAME AS THE ROOM NUMBER NOTED ON PLANS - IF MORE THAN ONE DOOR IS INDICATED AT A ROOM, ALL DOORS WILL BE NUMBERED FOR THAT ROOM.
- FIRE RATED DOORS AND FRAMES ARE LISTED IN MINUTES. SEE DOOR SCHEDULE.
- DOOR UNDERCUTS FOR MECHANICAL REQUIREMENTS REQUIRE A 5/8" MAX. CLEAR DISTANCE MEASURED FROM THE TOP OF THE FINISHED FLOOR MATERIAL OR THRESHOLD TO THE BOTTOM OF THE DOOR. STANDARD TOLERANCES OF UNDERCUTTING OF DOORS FOR THRESHOLDS AND OTHER FLOOR COVERING MATERIALS ARE NOT NOTED AND MUST BE CONSIDERED IN DETERMINING THE ACTUAL OVERALL DIMENSIONS OF THE DOOR. COORDINATE WITH AFFECTED TRADES.
- LOCATION OF DOORS NOTED ON PLANS ARE DIMENSIONED TO THE FACE OF DOOR/JAMB UNLESS OTHERWISE NOTED OR DETAILED. IF DOOR LOCATION IS NOT DIMENSIONED - FACE OF JAMB SHALL BE 4" TO THE WALL.
- REINFORCE ALL DOORS AND MILLWORK FOR HARDWARE.
- ALL HOLLOW METAL DOOR FRAMES MUST BE GROUTED SOLID UNLESS SPECIFICALLY NOTED OTHERWISE. NOTE: COORDINATE CAVITIES FOR HARDWARE ITEMS.
- UNLESS NOTED OR DETAILED, THICKNESS OF DOORS ARE 1.34".
- ALL WOOD DOORS SHALL HAVE SOLID CORES.

PARTNERS



PARTNERS in Architecture, PLC
 65 MARKET STREET
 MOUNT CLEMENS, MI 48043
 P 586.469.3600
 F 586.469.3607

Statement of Intellectual Property
 The ideas, concepts, drawings and thoughts conveyed herein are the intellectual property of PARTNERS in Architecture, PLC, 65 Market Street, Mount Clemens, MI 48043 (P 586.469.3600). This set of drawings, in whole or in part, may not be reproduced, without the written consent of PARTNERS in Architecture, PLC. This information is protected under U.S. Copyright Law, all rights reserved.
 © Copyright 2013

CONSULTANT

KEY PLAN

OWNER

Warren Consolidated Schools

PROJECT NAME

Secure Entrance Improvements

PROJECT NO.

12-157

ISSUES / REVISIONS

Owner Review 3/26/2013
 Bidding / Construction 4/2/2013

DRAWN BY

BC

CHECKED BY

APPROVED BY

SHEET NAME

DOOR SCHEDULE AND DETAILS

SHEET NO.

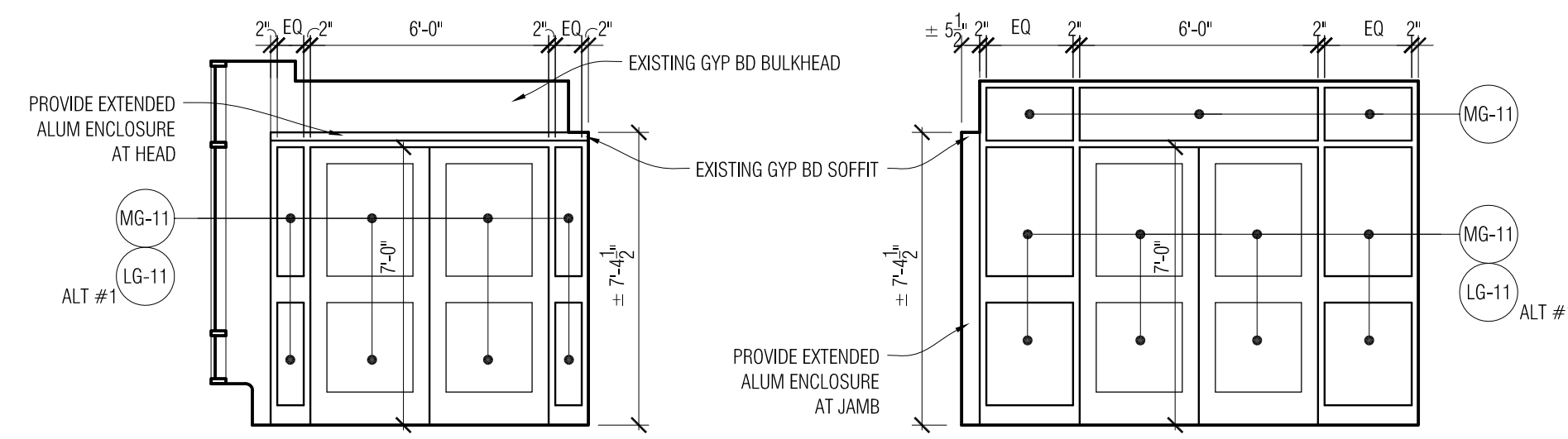
A1-03



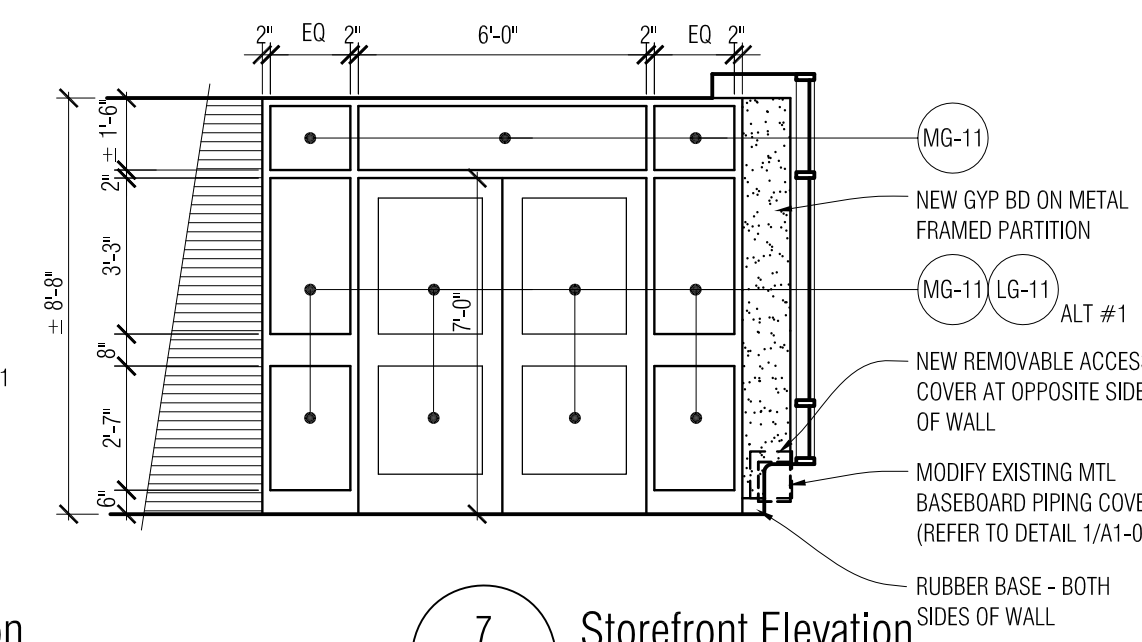
APPROXIMATE GLAZING AREA: 48 SF

10 Existing Storefront Elevation

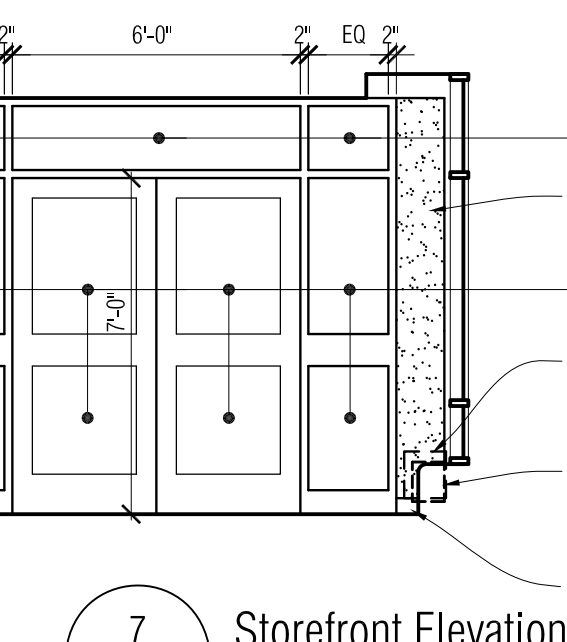
INSTALL SURFACE APPLIED FILM (SAF-1) AT GLAZING AS SHOWN - REFER TO SPECIFICATION



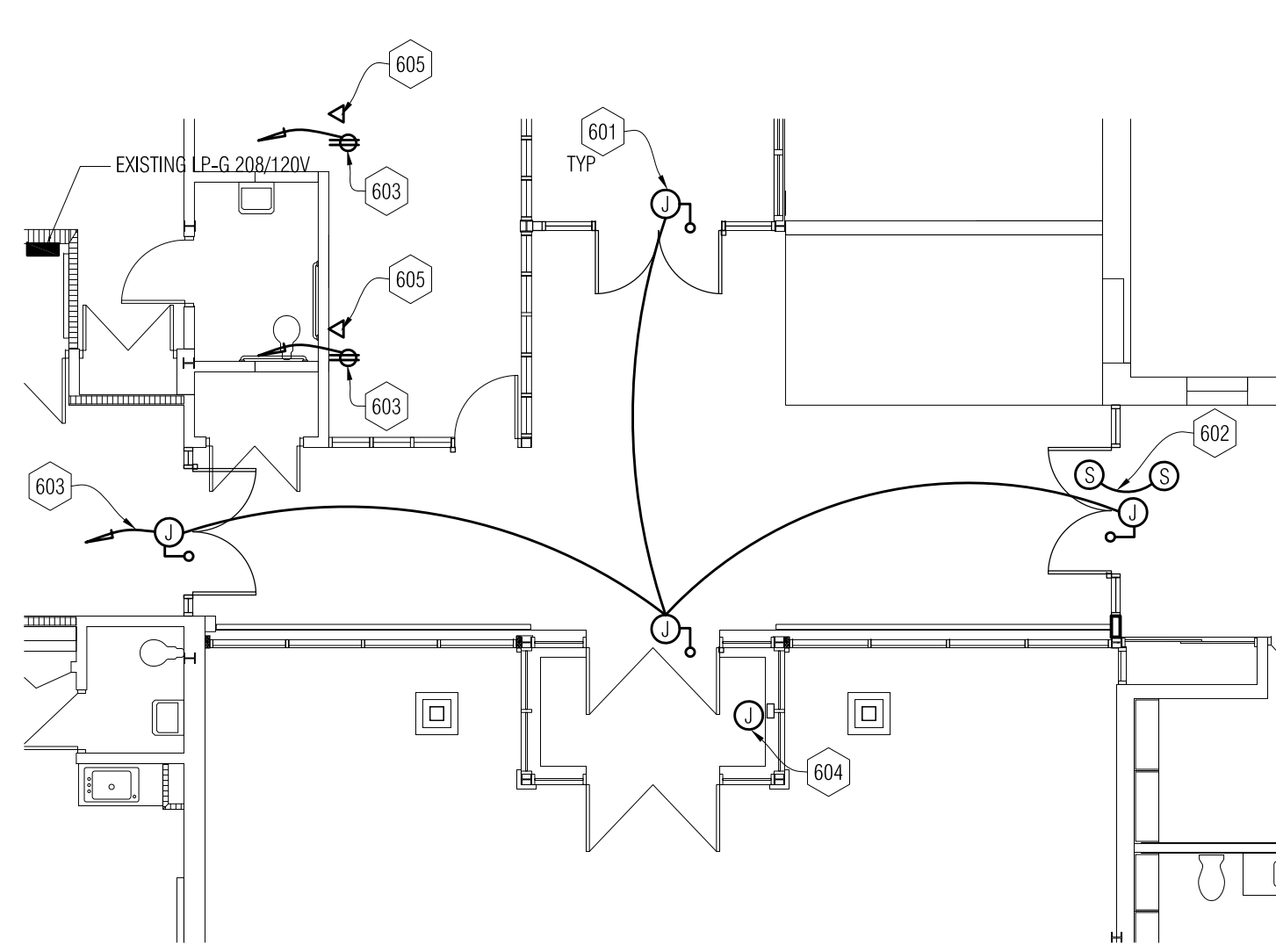
9 Storefront Elevation
1/4" = 1'-0"



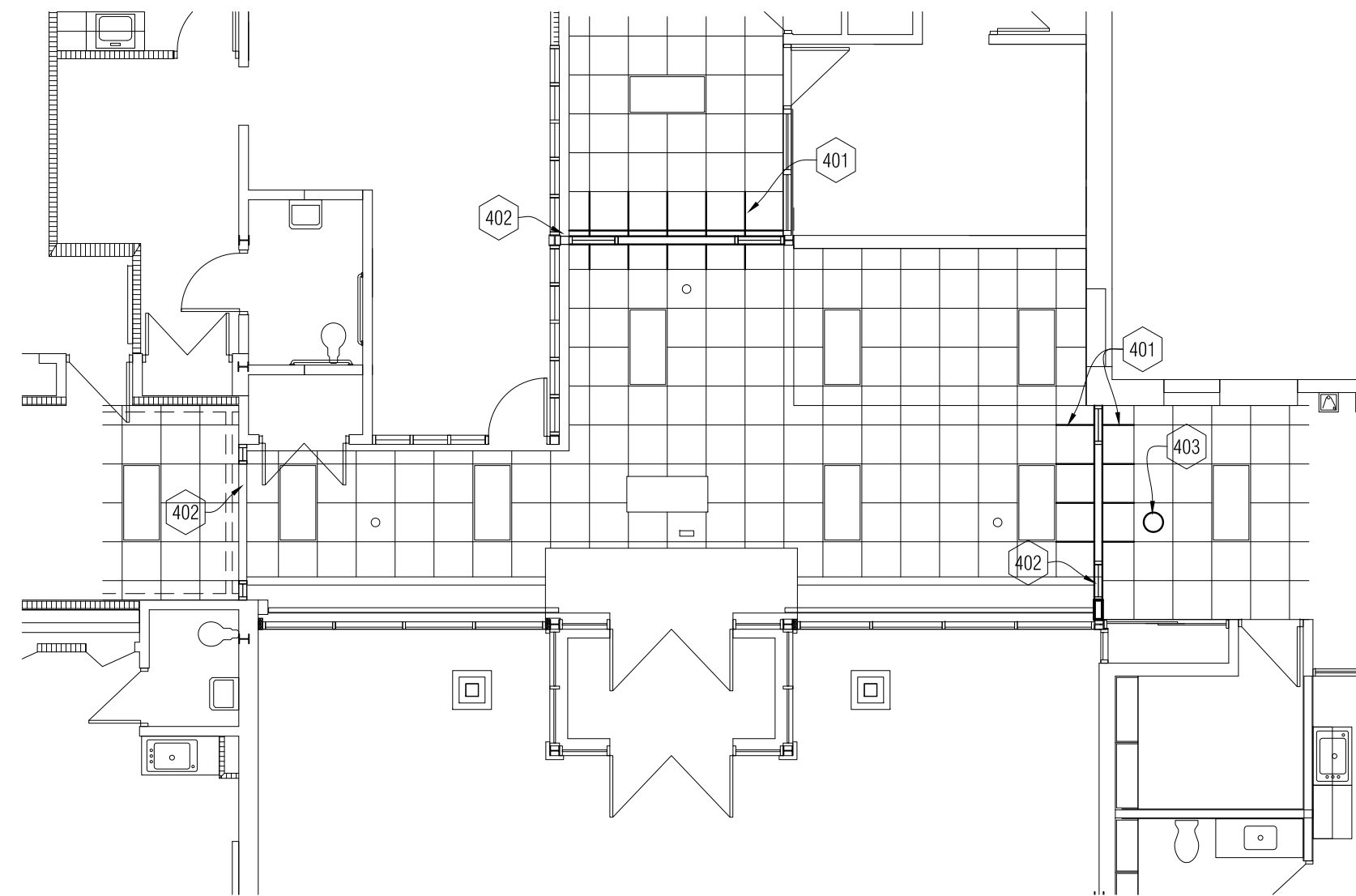
8 Storefront Elevation
1/4" = 1'-0"



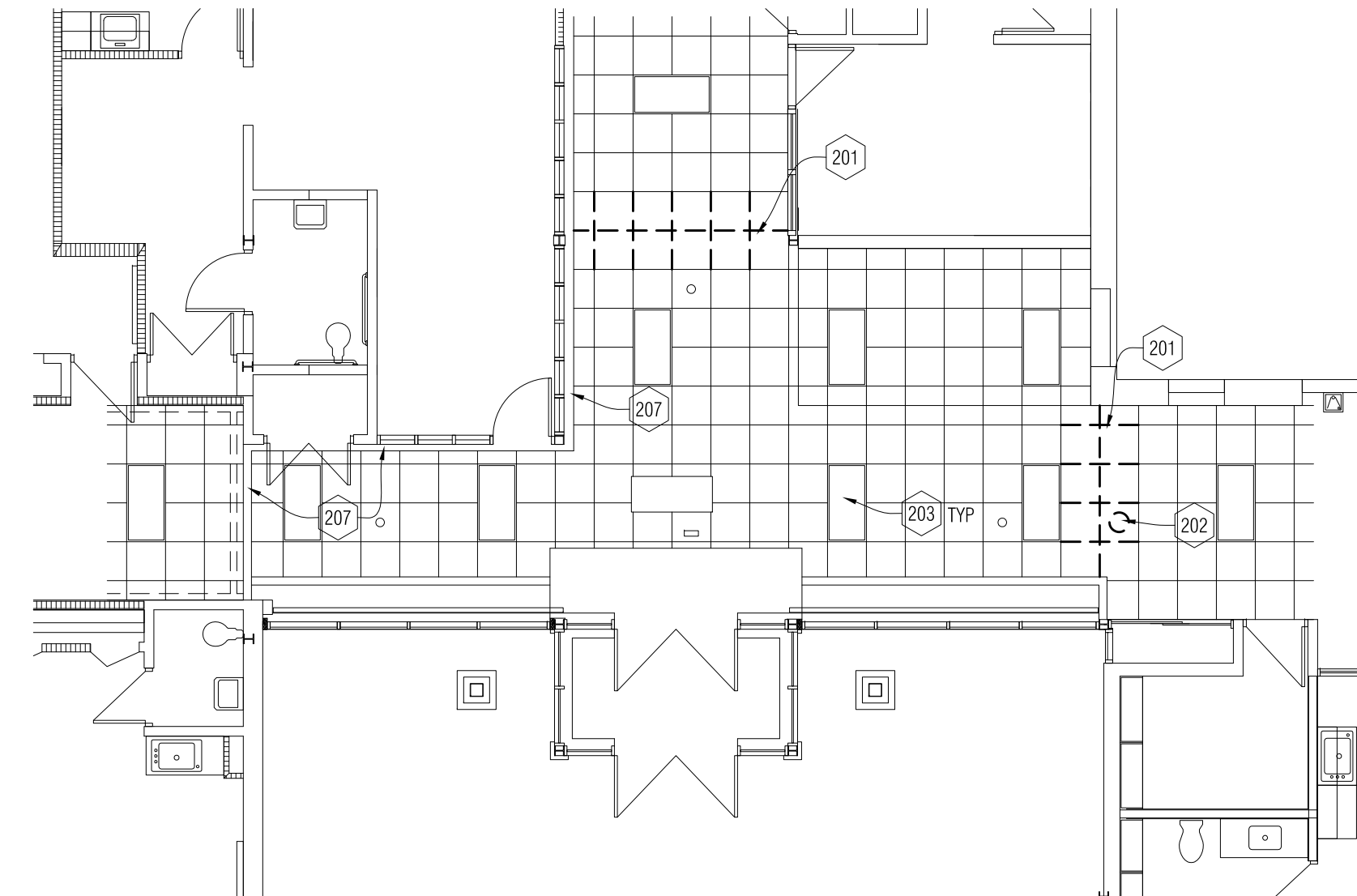
7 Storefront Elevation
1/4" = 1'-0"



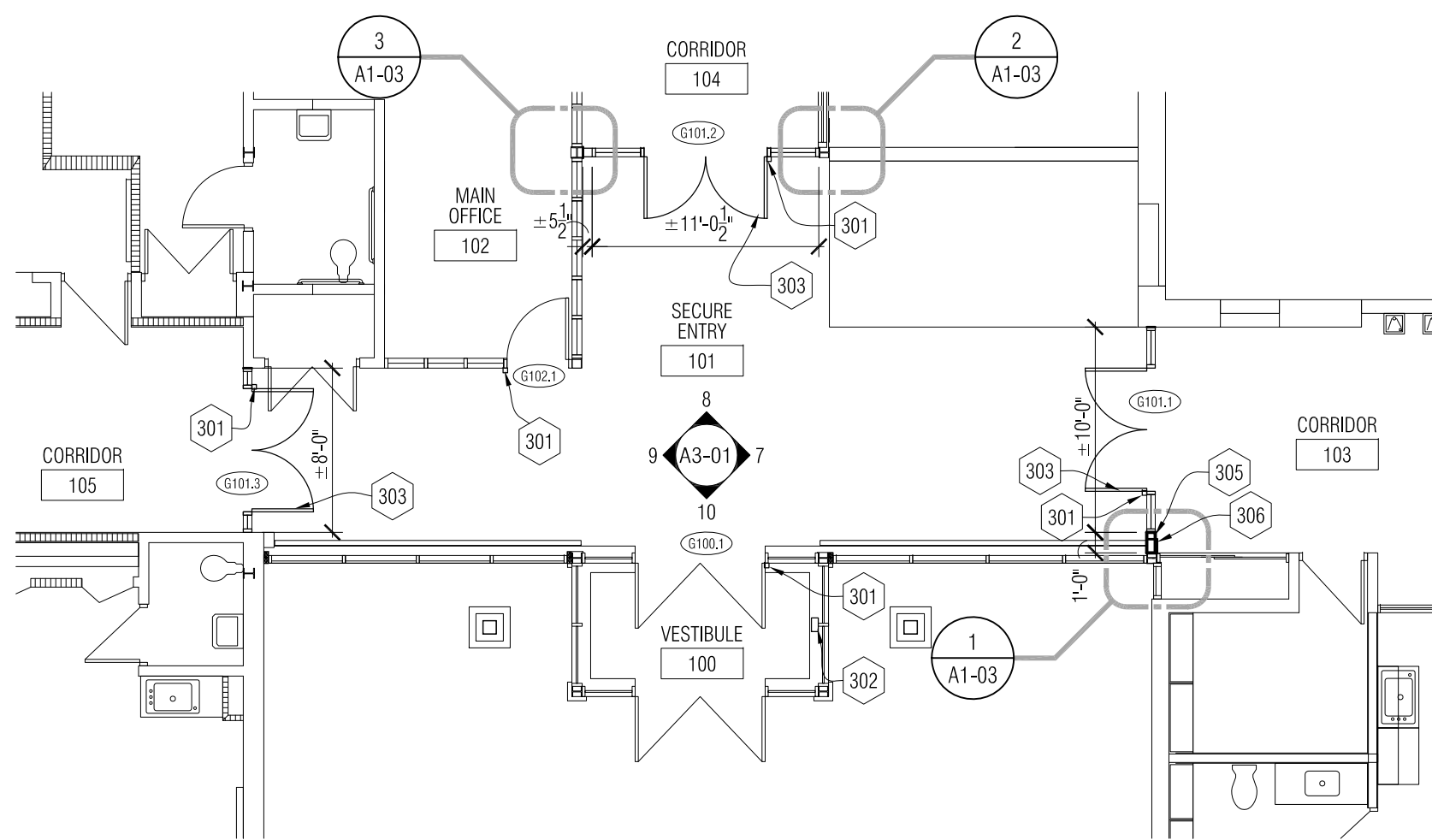
6 Electrical Plan
1/8" = 1'-0"



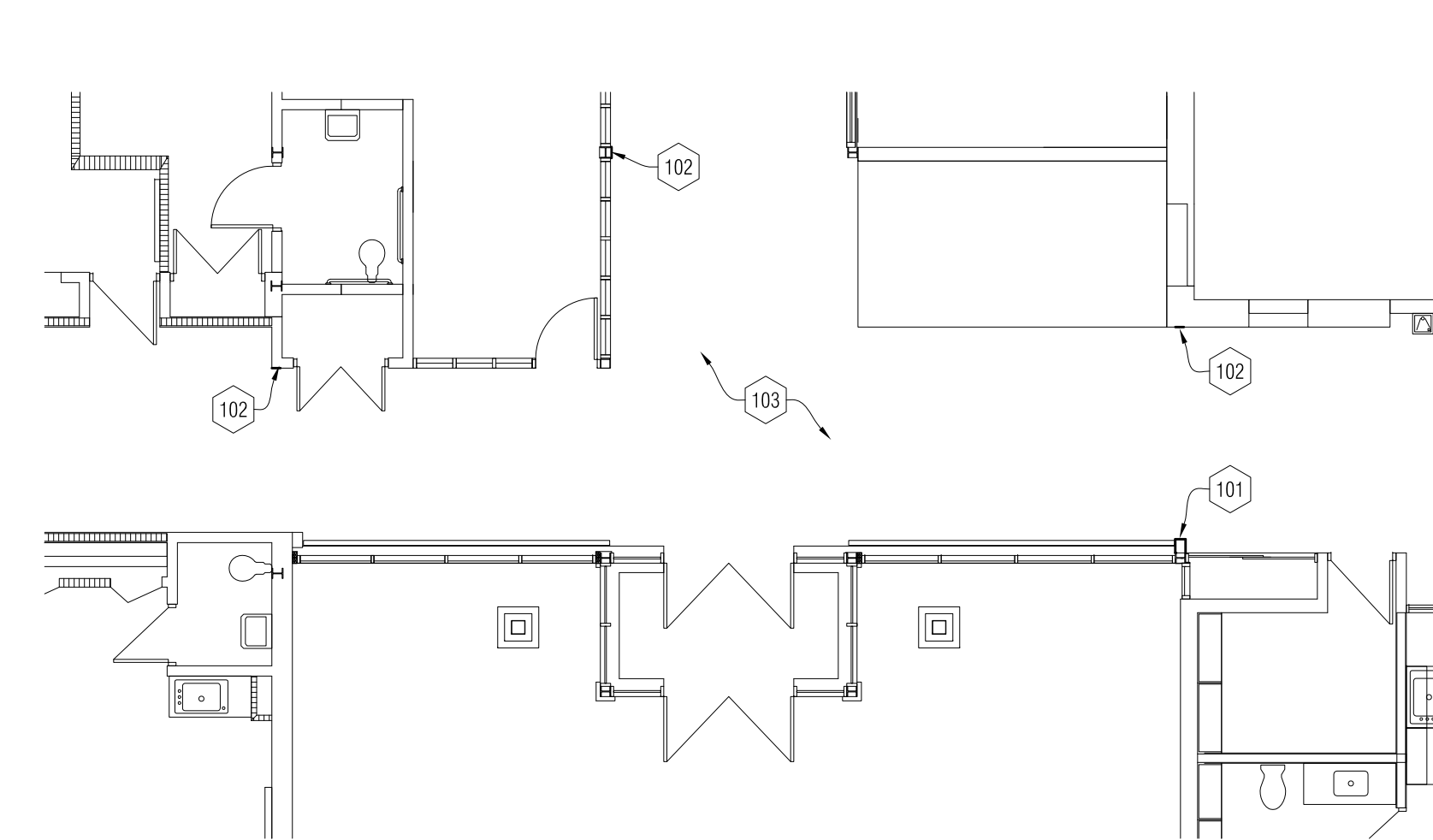
4 Reflected Ceiling Plan
1/8" = 1'-0"



2 Demolition Reflected Ceiling Plan
1/8" = 1'-0"



3 New Work Floor Plan
1/8" = 1'-0"



1 Demolition Floor Plan
1/8" = 1'-0"

DEMOLITION KEY NOTES

- FLOOR PLANS:
- 101 REMOVE EXISTING BASEBOARD PIPING COVER.
 - 102 CAREFULLY CUT & REMOVE PORTION OF EXISTING RUBBER BASE TO ALLOW FOR NEW WORK TO BE INSTALLED FLUSH TO EXISTING CONSTRUCTION.
 - 103 EXISTING TERRAZZO FLOOR - PROTECT DURING CONSTRUCTION
 - 104 EXISTING CARD ACCESS DEVICE TO REMAIN. COORDINATE WITH NEW CARD ACCESS SYSTEM INSTALLATIONS.
 - 105 REMOVE FLUSH BOLT FLOOR RECEIVERS & PORTION OF VCT. PREPARE FOR NEW WORK.
 - 106 REMOVE AND SALVAGE EXISTING ALUMINUM DOORS FOR RELOCATION.
 - 107 REMOVE ALUM / GLASS STOREFRONT SYSTEM COMPLETE.
 - 108 DISCONNECT AND SALVAGE EXISTING DOOR ACCESS CONTROLS & WIRING FOR RELOCATION IN NEW STOREFRONT SYSTEM.
 - 109 REMOVE HOLLOW METAL AND GLASS SYSTEM COMPLETE. PRESERVE & SHORE IN PLACE EXISTING RATED CLOSURE CONSTRUCTION ABOVE EXISTING FRAME TO BE REMOVED. PATCH & REPAIR TO MAINTAIN EXISTING RATING.
 - 110 REMOVE SOLID CORE WOOD DOOR & HARDWARE COMPLETE
 - 111 REMOVE CARPET TO EXTENT INDICATED. ALLOW FOR PRESERVATION OF EXISTING CARPET TO REMAIN.
 - 112 REMOVE WINDOW. PORTION OF MASONRY WALL AND UNTEL ABOVE WINDOW. PREPARE WALL & FLOOR FOR NEW WORK.
 - 113 CAREFULLY REMOVE PLAM COUNTER TOP TO SALVAGE EXISTING BASE CABINETS BELOW FOR RELOCATION (NUMBER OF CABS SHOWN ON KEYNOTE).
 - 114 REMOVE & SALVAGE PLAM BASE CABINETS TO BE TURNED OVER TO OWNER. (NUMBER OF CABS SHOWN ON KEYNOTE).
 - 115 REMOVE EXISTING PLAM COUNTER TOP. UPPER CABINET AND SUPPORTS COMPLETE.
 - 116 CAREFULLY REMOVE EXISTING PLAM WORKSTATION & BASE CABS TO BE RELOCATED.
 - 117 EXISTING CARPET TO REMAIN - PROTECT DURING CONSTRUCTION
- CEILING PLANS:
- 201 CAREFULLY REMOVE EXISTING CEILING GRID AND PADS AS REQUIRED FOR INSTALLATION OF NEW WORK. SALVAGE FOR REINSTALLATION.
 - 202 CAREFULLY REMOVE EXISTING SPEAKER. SALVAGE FOR RELOCATION.
 - 203 EXISTING LIGHT FIXTURE TO REMAIN - PROTECT DURING CONSTRUCTION
 - 204 EXISTING WALL MTD TV TO REMAIN - PROTECT DURING CONSTRUCTION
 - 205 REMOVE EXISTING EXIT SIGN. COORD RE-ROUTING OF POWER & CONDUIT TO NEW EXIT SIGN LOCATION - REFER TO REFLECTED CEILING PLAN
 - 206 REMOVE & REINSTALL POWER & DATA CONDUITS TO COMPLETE WORK.
 - 207 EXISTING GYPSUM BD BULKHEAD

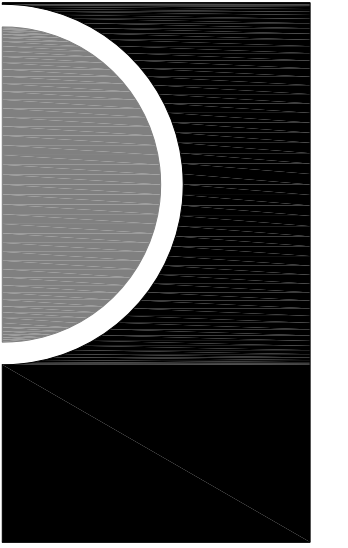
NEW WORK KEY NOTES

- FLOOR PLANS:
- 301 CARD READER JUNCTION BOX LOCATION
 - 302 VIDEO / INTERCOM UNIT WITH DOOR RELEASE
 - 303 NEW ALUM / GLASS STOREFRONT WITH DOOR(S) AS SCHEDULED. REFER TO ELEVATIONS FOR GLASS TYPES.
 - 304 NEW H.M. / GLASS STOREFRONT WITH DOOR AS SCHEDULED. REFER TO ELEVATIONS FOR GLASS TYPES.
 - 305 NEW GYP BD ON METAL FRAMING. ENCLOSE EXISTING BASEBOARD MECHANICAL PIPING
 - 306 NEW REMOVABLE ACCESS PANEL FOR ACCESS TO BASEBOARD MECHANICAL PIPING (REFER TO DETAIL 1/A1-03)
 - 307 NEW AUDIBLE DOOR SIGNAL BUTTON CONNECTED TO SPEAKER IN MULTI-PURPOSE ROOM J131.
 - 308 NEW FINISHED PLAM END PANEL TO MATCH EXISTING
 - 309 PATCH & REPAIR HOLE WITH TOOTHED-IN MASONRY. PAINT WALL FROM CORNER TO CORNE R.FLOOR TO CEILING TO MATCH EXISTING.
 - 310 PATCH & REPAIR WALL & MULLION TO LIKE NEW CONDITION. PAINT TO MATCH EXISTING.
 - 311 NEW DOOR LITE & TRIM HIT INSTALLED INTO EXISTING HM DOOR. REFER TO DOOR SCHEDULE FOR ADDITIONAL INFORMATION.
- CEILING PLANS:
- 401 MODIFY AND REINSTALL SALVAGED CEILING GRID AND PADS. PROVIDE NEW CEILING GRID AND PADS AS REQUIRED TO COMPLETE CEILING SYSTEM.
 - 402 PAINT EXISTING BULKHEAD. PATCH & REPAIR AS NECESSARY FOR LIKE NEW FINISH.
 - 403 REINSTALL EXISTING SALVAGED SPEAKER IN EXISTING CEILING TILE
- FINISH FLOOR PLANS:
- 501 PATCH FLOOR WITH CONCRETE FILLER AND PREPARE FOR NEW VCT PATCH TO MATCH EXISTING FOR LIKE NEW FINISH
 - 502 NEW FLUSH BOLT FLOOR RECEIVER FOR RELOCATED EXISTING DOORS
 - 503 [ALT # 2] - NEW CARPET & RUBBER WALL BASE (CARPET TO BE PROVIDED BY OWNER)
 - 504 NEW RUBBER TRANSITION STRIP
 - 505 [ALT #2] - PROVIDE BACKING REINFORCEMENT AND SEAMING OF NEW AND EXISTING CARPETS TO REMAIN. PROVIDE REINFORCED/ADHERED SEAMING TAPE COMPATIBLE WITH NEW AND EXISTING BACKING SYSTEMS. VERIFY EXISTING BACKING SYSTEM IN FIELD.

ELECTRICAL KEY NOTES

- 601 JUNCTION BOX ABOVE CEILING. EXTEND CIRCUIT TO DOOR SECURITY SYSTEM. PROVIDE EACH DOOR WITH 1/2" C INTO DOOR FRAMES AND BACK TO MAIN OFFICE AS REQUIRED BY DOOR SECURITY SYSTEM.
- 602 RELOCATE SPEAKER TO CLEAR NEW DOOR AND FRAME INSTALLATION. COORDINATE WITH DOOR LAY OUT IN FIELD.
- 603 NEW DUPLEX OUTLET FOR VIDEO SECURITY MAIN STATION. CONNECT TO SPARE 20A 1P SPARE BREAKER IN EXISTING LP-G.
- 604 JUNCTION BOX FOR VIDEO SECURITY DOOR STATION PROVIDE WITH A 3/4" CONDUIT TO MAIN OFFICE.
- 605 NEW DATA OUTLET FOR VIDEO SECURITY MAIN STATION. VERIFY EXACT LOCATION IN FIELD.
- 606 CONNECT TO SPARE 20A 1P SPARE BREAKER IN EXISTING RP-INFOR
- 607 VIDEO SECURITY MAIN STATION. VERIFY EXACT LOCATION IN FIELD. CONNECT TO NEAREST AVAILABLE 20A - 120V - 1P CIRCUIT.
- 608 EXTEND DOOR SECURITY CIRCUIT TO NEW SECURITY DOOR LOCATION.
- 609 RELOCATE PA SYSTEM BELL
- 610 CONNECT TO SPARE 20A - 120V - 1P CIRCUIT IN EXISTING LP-B
- 611 PROVIDE WEATHER PROOF PUSH BUTTON AND DOOR BELL AS MANUFACTURED BY SUNRISCO B174. PROVIDE BELL WITH PROTECTIVE WIRE GUARD. CONNECT TO NEAREST AVAILABLE 20A-120V-1P CIRCUIT.
- 612 CONNECT TO SPARE 20A-1P BREAKER IN EXISTING LP-C.
- 613 CONNECT TO SPARE 20A - 1P BREAKER IN EXISTING RP-N3
- 614 CONNECT TO SPARE 20A - 1P BREAKER IN EXISTING RP-N4
- 615 MODIFY EXISTING POWER & DATA RACEWAY. RELOCATE ENDCAPS. TURN OVER DEVICES & BRACKETS TO OWNER.

PARTNERS



PARTNERS in Architecture, PLC
65 MARKET STREET
MOUNT CLEMENS, MI 48043
P 586.463.3600
F 586.463.3607

Statement of Intellectual Property
The ideas, concepts, drawings and thoughts conveyed herein are the intellectual property of PARTNERS in Architecture, P.L.C. 65 Market Street, Mount Clemens, MI 48043 (P 586.463.3600). This set of drawings, in whole or in part, may not be reproduced, without the written consent of PARTNERS in Architecture, P.L.C. This information is protected under U.S. Copyright Law, all rights reserved.
© Copyright 2013

CONSULTANT

KEY PLAN

OWNER

Warren Consolidated Schools

PROJECT NAME

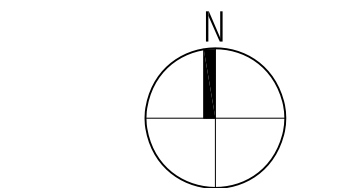
Secure Entrance Improvements

PROJECT NO.

12-157

ISSUES / REVISIONS

Owner Review 3/26/2013
Bidding / Construction 4/2/2013



DRAWN BY

CHECKED BY

APPROVED BY

SHEET NAME

GREEN ACRES ELEMENTARY

SHEET NO.

A3-01