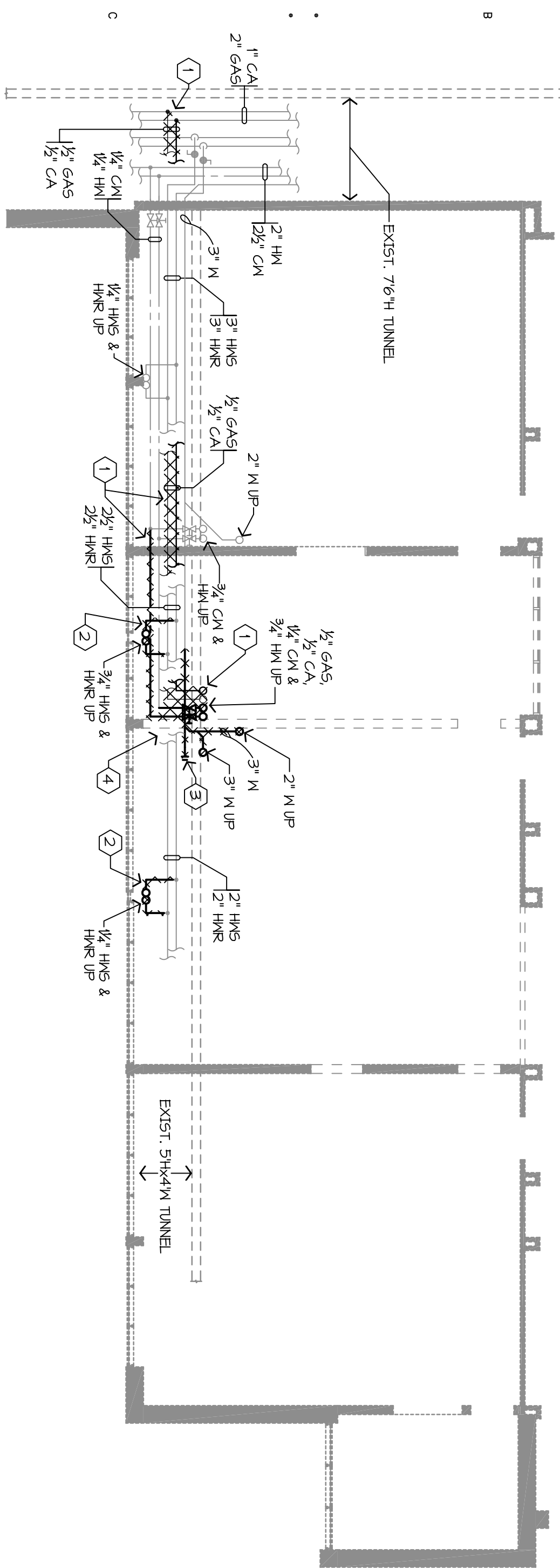
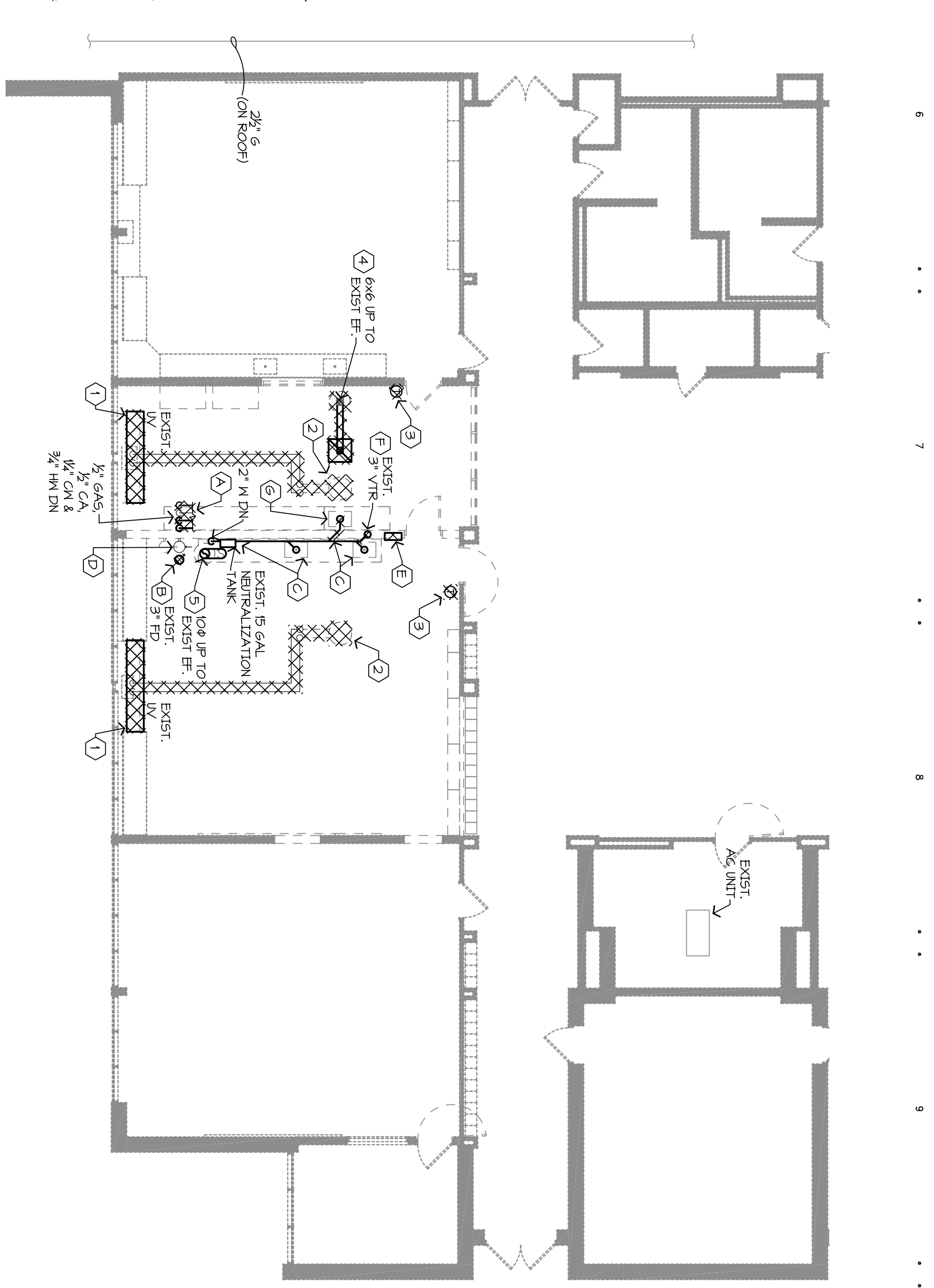


1	2	3	4	5	6	7	8	9	10
---	---	---	---	---	---	---	---	---	----



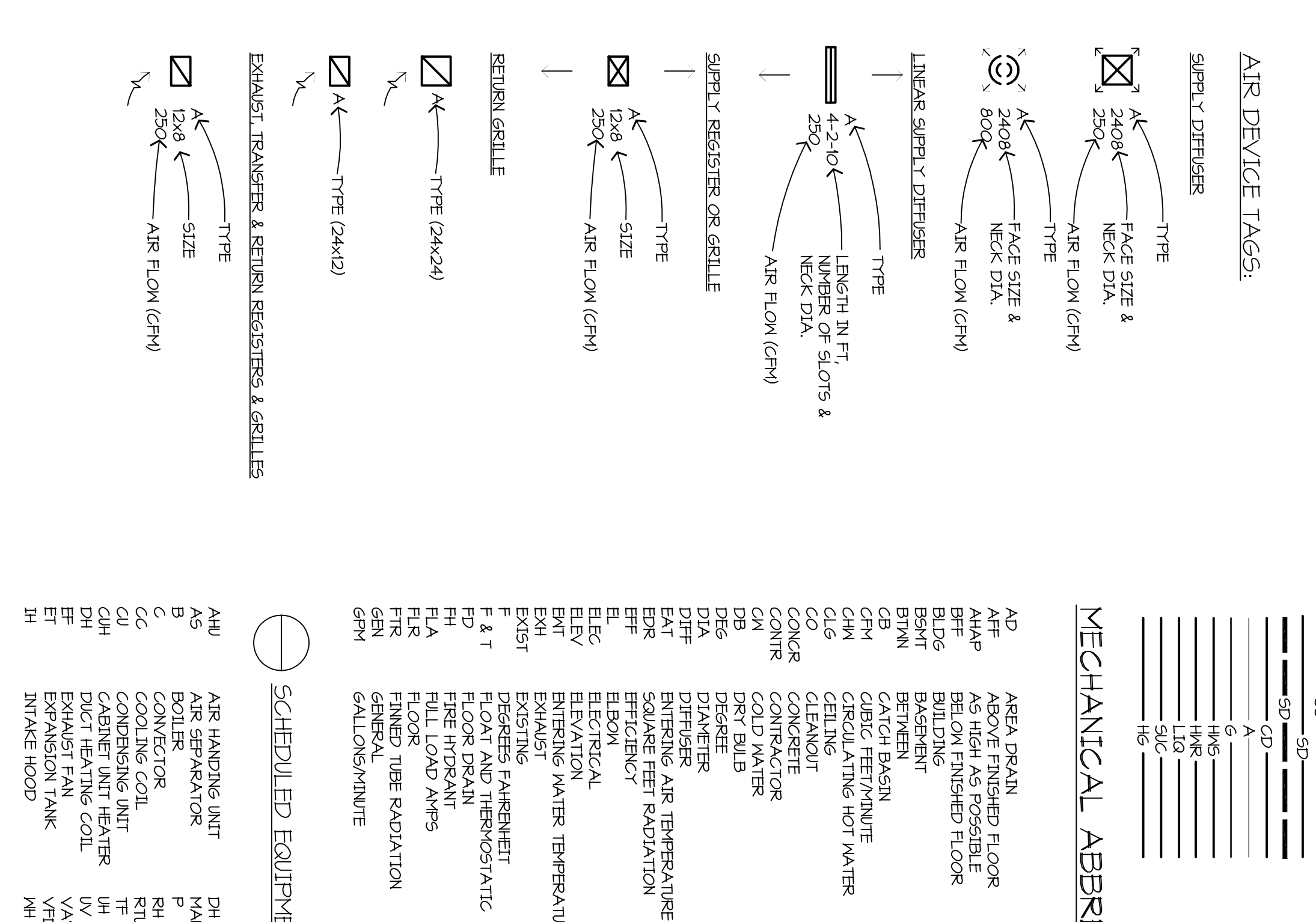
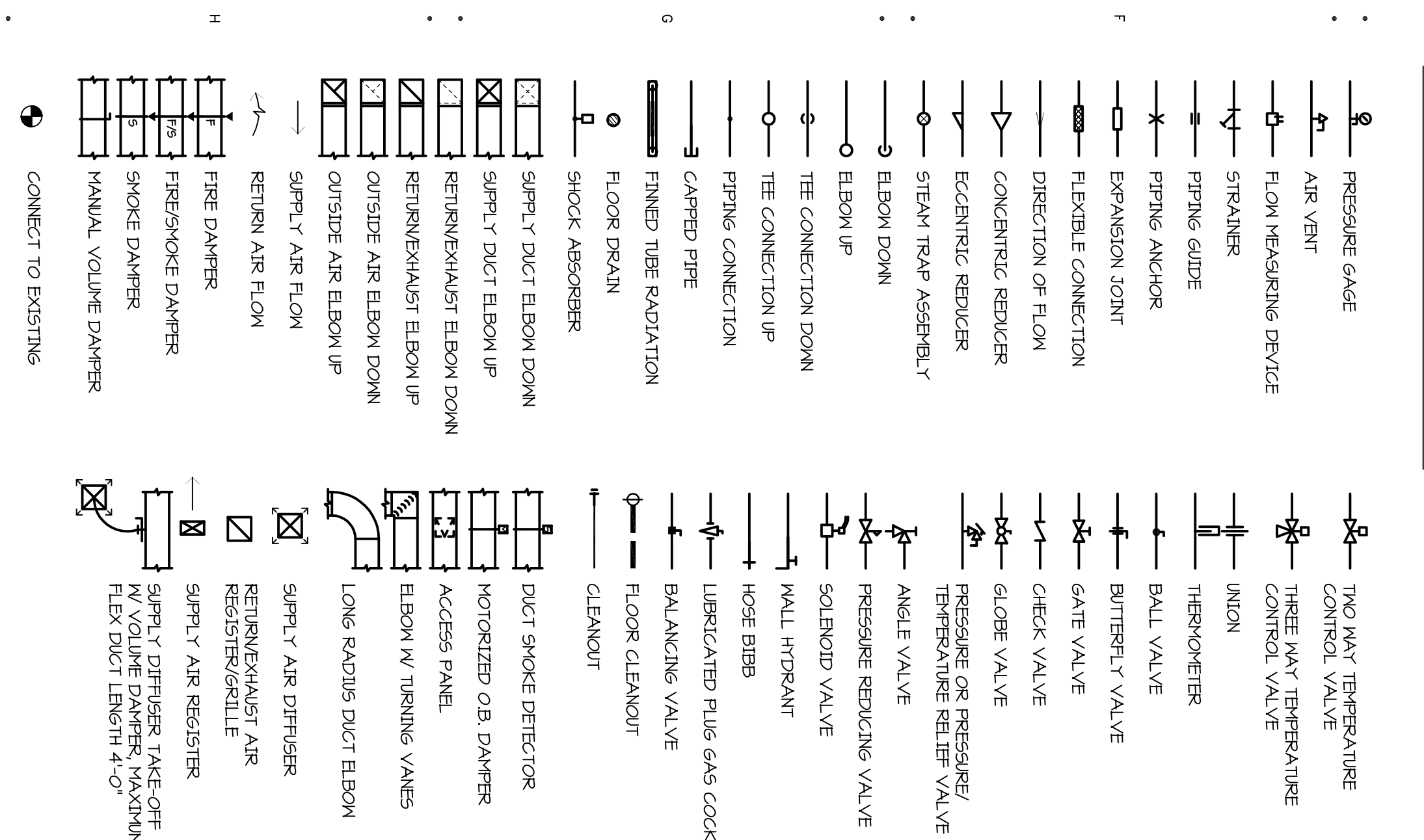
- GENERAL DEMOLITION NOTES:**
1. MECHANICAL CONTRACTOR SHALL BE RESPONSIBLE FOR ANY ADDITIONAL CUTTING AND GRINDING OF EXISTING ARCHITECTURAL FLANS. NO CUTTING OF STRUCTURAL MEMBERS OR STRUCTURE OR BRACING SHALL BE ALLOWED WITHOUT WRITTEN APPROVAL FROM THE STRUCTURAL ENGINEER.
 2. ALL EXISTING SERVICES SHALL BE IDENTIFIED BY MEANS OF FIELD SURVEY AND INDICATED ON THE PLANS. COORDINATE DISPOSITION OF SERVICES TO THE OWNER FOR AN ACCEPTABLE METHOD TO THE CODES.
 3. REPAIRS AND PATCHES SHALL BE COORDINATE WITH EXISTING CONDITIONS INDICATED ON THE PLANS. DAMAGED TILES AND OR GRIDS SHALL BE REPLACED WITH NEW TO MATCH AT THE CONTRACTORS DISCRETION.
 4. ALL DUCTWORK, DIFFUSERS, AND PIPING NOTED SHALL BE DEMOLISHED OTHERWISE NOTED.
- UNDERGROUND DEMOLITION NOTES:**
1. REMOVE EXIST. 2 1/2\"/>



- MECHANICAL DEMOLITION NOTES:**
1. REMOVE EXISTING UNIT VENTILATOR CONCRETE BEAM AND HYDRONIC PIPING CONNECTIONS COMPLETE. SEE ARCHITECTURAL PLANS FOR LOWER LEVELS AND COORDINATE ELECTRICAL DISCONNECT. WALL PATCH AND FINISH BY OTHERS.
 2. REMOVE EXISTING COMPRESSOR UNIT FROM ROOF AND ALL ASSOCIATED SUPPORT STRUCTURE. REMOVE ALL ASSOCIATED EXHAUST TRUCT AND EXHAUST HOOD. REMOVE CURB COMPLETE ELECTRICAL DISCONNECT AND ROOF WORK PLANS FOR REINSTALLATION REQUIREMENTS.
 3. REMOVE EXISTING MALL MOUNTED COMPRESSOR UNIT AND ASSOCIATED ELECTRICAL DISCONNECT AND ROOF WORK PLANS FOR REINSTALLATION CONSTRUCTION.
 4. REMOVE EXISTING EXHAUST FAN AND CURB COMPLETE ELECTRICAL DISCONNECT AND REMOVE ALL EXISTING EXHAUST TRUCT BETWEEN CEILING AND ROOF AND ASSOCIATED GRILLES.
 5. REMOVE AND SALVAGE EXISTING FIVE HOOD EXHAUST FAN AND OF EXHAUST HOOD. REMOVE CURB COMPLETE ELECTRICAL DISCONNECT AND ROOF WORK PLANS FOR REINSTALLATION REQUIREMENTS.
- EXHAUST DEMOLITION NOTES:**
1. REMOVE ENTIRE EXIST. 1 1/2\"/>

C1 UNDERGROUND/TUNNEL MECHANICAL DEMOLITION PLAN 1/8" = 1'-0"

C6 MAIN LEVEL MECHANICAL DEMOLITION PLAN 1/8" = 1'-0"



MECHANICAL ABBREVIATIONS

AD	AREA DRAIN	GR	GRILLE
AFF	ABOVE FINISHED FLOOR	H3	HOSE BIBB
AG	ABOVE GRADE	HM	HAND COLD WATER
AGP	ABOVE FINISHED FLOOR	H4	HAND COLD WATER
AGP	ABOVE FINISHED FLOOR	H5	HAND COLD WATER
BLDG	BUILDING	HN	HOT WATER
BSMT	BASEMENT	INVT	INVERT
CB	CATCH BASIN	INT	INTERIOR
CM	CATCH MOUNT	LAT	LEAVING WATER TEMPERATURE
CPH	CABLE HEATING UNIT	LV	LEAVING WATER TEMPERATURE
CL6	CABLE HEATING UNIT	MCH	MECHANICAL
CDD	CABLE HEATING UNIT	MCH	MECHANICAL
CLG	CABLE HEATING UNIT	MCH	MECHANICAL
COG	COLD WATER	MN	MINOR
CON	CONTRACTOR	NK	NOT TO SCALE
CON	CONTRACTOR	OK	OUTSIDE AIR
DB	DRAIN	OS	OUTSIDE AIR
DB	DRAIN	OS	OUTSIDE AIR
DB	DRAIN	OS	OUTSIDE AIR
DB	DRAIN	OS	OUTSIDE AIR
DB	DRAIN	OS	OUTSIDE AIR
DB	DRAIN	OS	OUTSIDE AIR
DB	DRAIN	OS	OUTSIDE AIR
DB	DRAIN	OS	OUTSIDE AIR

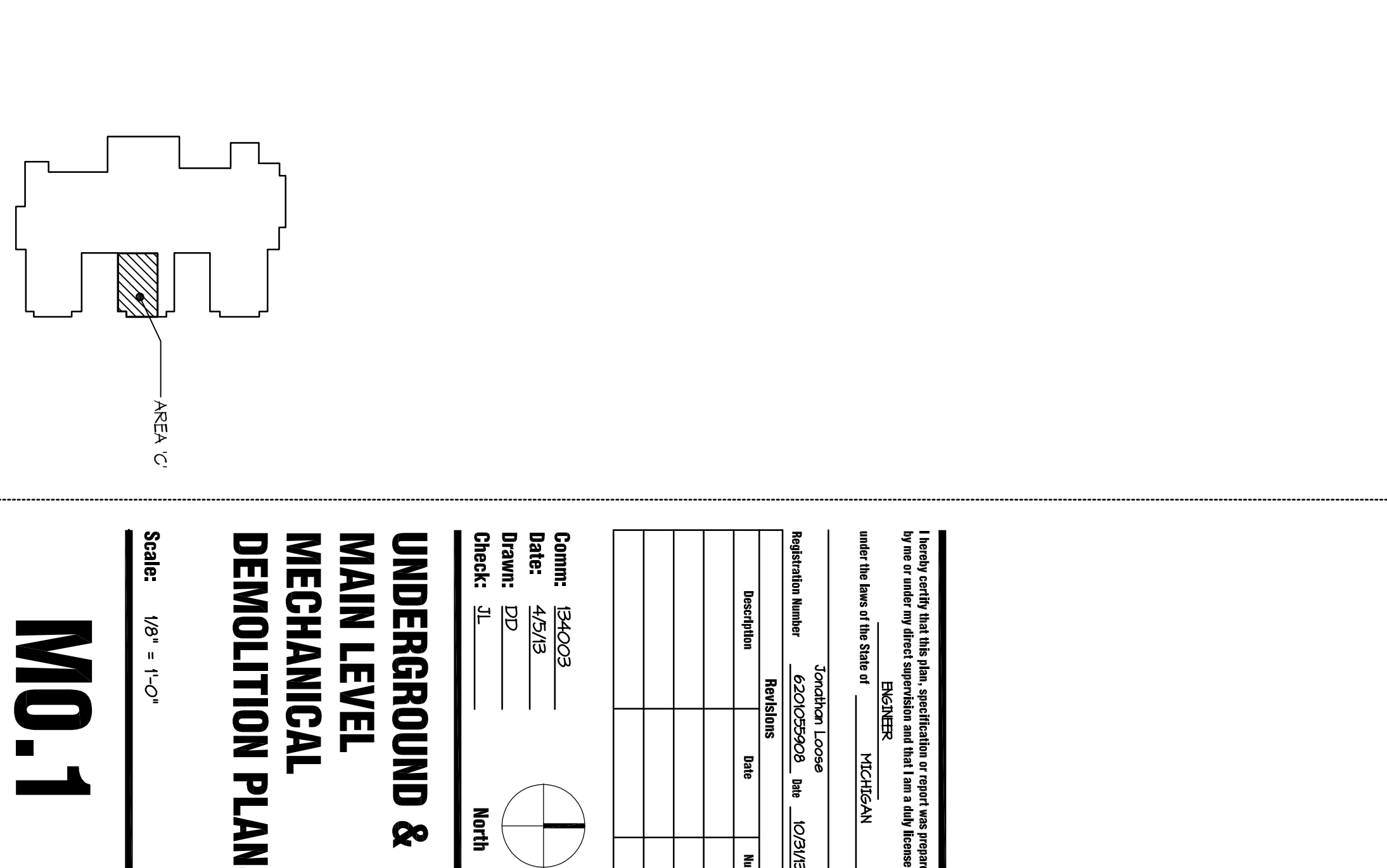
SCHEDULED EQUIPMENT NUMBER

AAP	AIR HANDLING UNIT	DH	DUCT HEATER
AAP	AIR HANDLING UNIT	DM	DUCT HEATER
AAP	AIR HANDLING UNIT	DM	DUCT HEATER
AAP	AIR HANDLING UNIT	DM	DUCT HEATER
AAP	AIR HANDLING UNIT	DM	DUCT HEATER
AAP	AIR HANDLING UNIT	DM	DUCT HEATER
AAP	AIR HANDLING UNIT	DM	DUCT HEATER
AAP	AIR HANDLING UNIT	DM	DUCT HEATER
AAP	AIR HANDLING UNIT	DM	DUCT HEATER
AAP	AIR HANDLING UNIT	DM	DUCT HEATER



MECHANICAL ABBREVIATIONS

AP	AIR PRESSURE	CS	CARBON SINK
BS	BLOW OFF	CS	CARBON SINK
BS	BLOW OFF	CS	CARBON SINK
BS	BLOW OFF	CS	CARBON SINK
BS	BLOW OFF	CS	CARBON SINK
BS	BLOW OFF	CS	CARBON SINK
BS	BLOW OFF	CS	CARBON SINK
BS	BLOW OFF	CS	CARBON SINK
BS	BLOW OFF	CS	CARBON SINK
BS	BLOW OFF	CS	CARBON SINK



**WHi Science Lab
Renomdel**

510 Emerick St
Ypsilanti, MI 48198

**Washtenaw Intermediate
School District**

1819 South Wagnor
Ann Arbor, Michigan 48106

WOLDA

architects
engineers

www.wolda.com

3331 West South Street
Suite 203, Ann Arbor, MI 48107
Rt. 101, N. Main St, Ann Arbor, MI 48106

414 248 284 0511
414 248 284 0515
mhi@wolda.com

UNDERGROUND & MAIN LEVEL MECHANICAL DEMOLITION PLANS

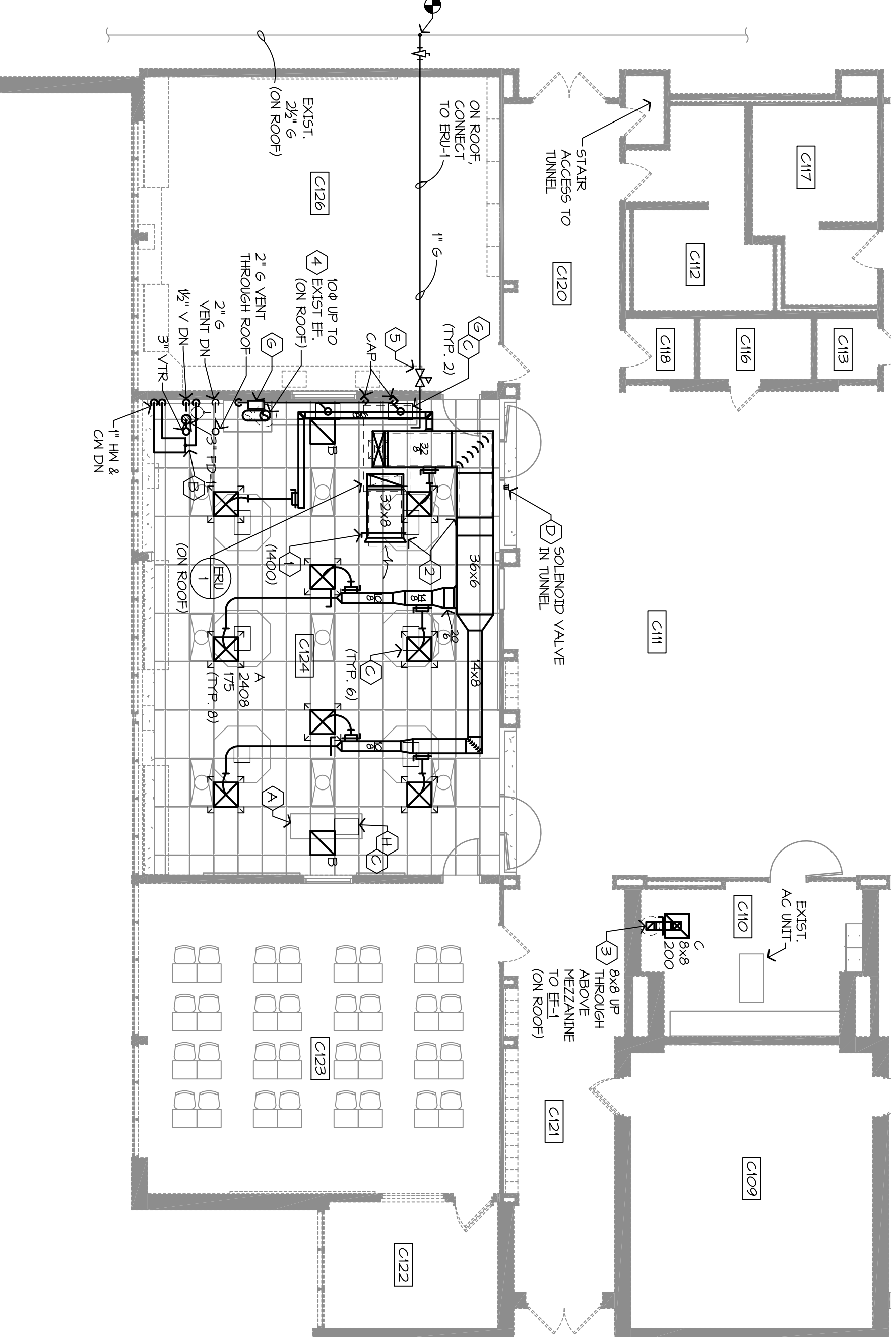
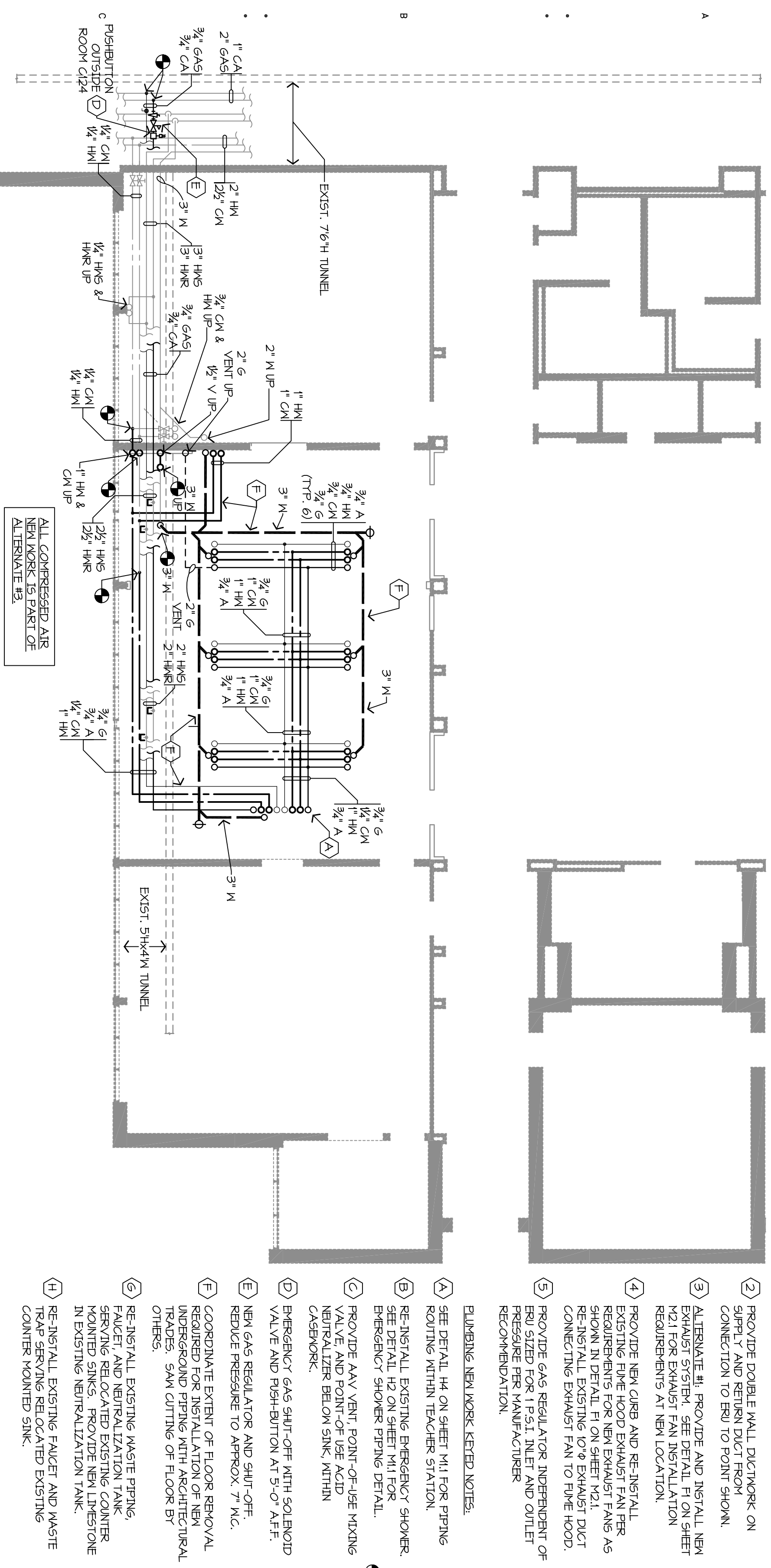
Scale: 1/8" = 1'-0"

MO.1

Project: 84003
Date: 4/26/20
Drawn: DJD
Checked: JH

Registered Number: 6329722203 Lic: 10/29/19
Professional Seal: REGISTERED ARCHITECT

Scale: 1/8" = 1'-0"



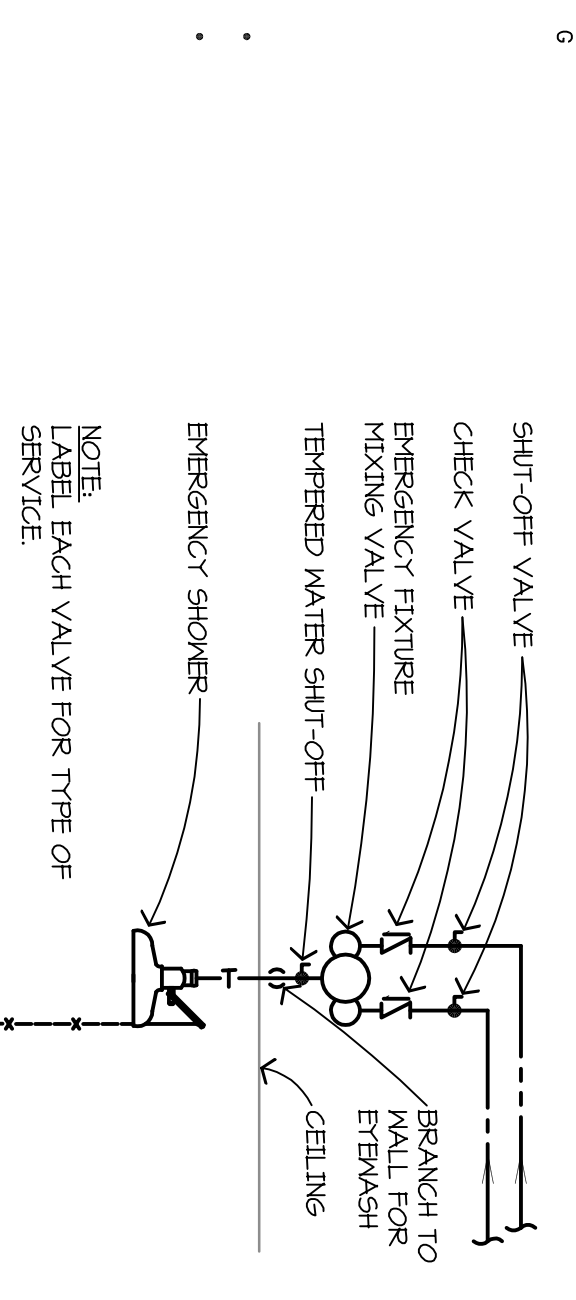
- GENERAL NOTES:
1. DRAWINGS ARE DIAGNOSTIC AND DO NOT NECESSARILY SHOW ALL REQUIRED AIR SERVICES AND OFFSETS. VERIFY ALL AIR SERVICES AND OFFSETS IN CONJUNCTION WITH OTHER TRADES PRIOR TO STARTING CONSTRUCTION.
 2. MECHANICAL CONTRACTOR SHALL BE RESPONSIBLE FOR ANY ADDITIONAL CUTTING NOT SHOWN ON THE ARCHITECTURAL PLANS. NO CUTTING OF STRUCTURAL MEMBERS OR INTEGRITY AND STRENGTH OF THE BUILDING SHALL BE ALLOWED WITHOUT WRITTEN APPROVAL FROM THE ARCHITECTURAL ENGINEER.
 3. ALL EXISTING SERVICES SHALL BE MAINTAINED UNLESS THE CLIENT HAS COORDINATE DISRUPTION OF SERVICES WITH OWNER TO PROVIDE AN ACCEPTABLE TIME ON-SITE WITH THE:
 4. MECHANICAL CONTRACTOR SHALL CEILING TIES AND GRIDS NOT SHOWN ON THE ARCHITECTURAL PLANS AS REQUIRED FOR DAMAGED TILES AND GRIDS SHALL BE REPLACED WITH NEW TO MATCH AT THE CONTRACTORS EXPENSE.
 5. MECHANICAL CONTRACTOR SHALL COORDINATE WITH ELECTRICAL CONTRACTOR RELATIVE TO THE EXECUTION OF HIS WORK. DETERMINE LIMITATIONS AND/OR CONFLICTS REQUIRED TO PROVIDE SYSTEMS SHOWN WITHIN SPACE INTENDED.
 6. ALL GAS PIPING ROUTED BELOW FLOOR SLAB OR CONCEALED WITHIN WALL IS TO BE PROVIDED 2\"/>
 - 7. ALL PIPING LEFT ABANDONED IS TO BE CONCEALED WITHIN WALL, BELOW FLOOR OR ABOVE CEILING.
 - 8. DIFFUSER AND REGISTER LOCATIONS SHALL BE COORDINATED WITH LIGHTING CONTRACTOR TO PROVIDE PATTERNS AS SHOWN ON THE ARCHITECTURAL REFLECTED CEILING PLANS.
 - 9. LOCATE AIR BALANCING DAMPERS OR LEVELABLE DUCT CONNECTIONS ABOVE ACCESSIBLE CEILING(S).
 - 10. COORDINATE LOCATIONS OF ANY ELECTRICAL SERVICES AND/OR CONDUITS WITH CEILING(S) WITH CONSTRUCTION MANAGER.
 - 11. ROUTE DUCTS BETWEEN CORNERS AND THROUGH JOIST VEWS WHERE REQUIRED TO COORDINATE WITH THE INSTALLATION OF HEIGHTS. COORDINATE LOCATIONS PRIOR TO CROSS BRACING TO ENSURE THERE ARE NO CONFLICTS.
 - 12. DIFFUSER DUCT RUNWAYS AND FLEXIBLE DUCT CONNECTIONS SHALL BE THE SAME SIZE AS THE DIFFUSER RUNWAY.



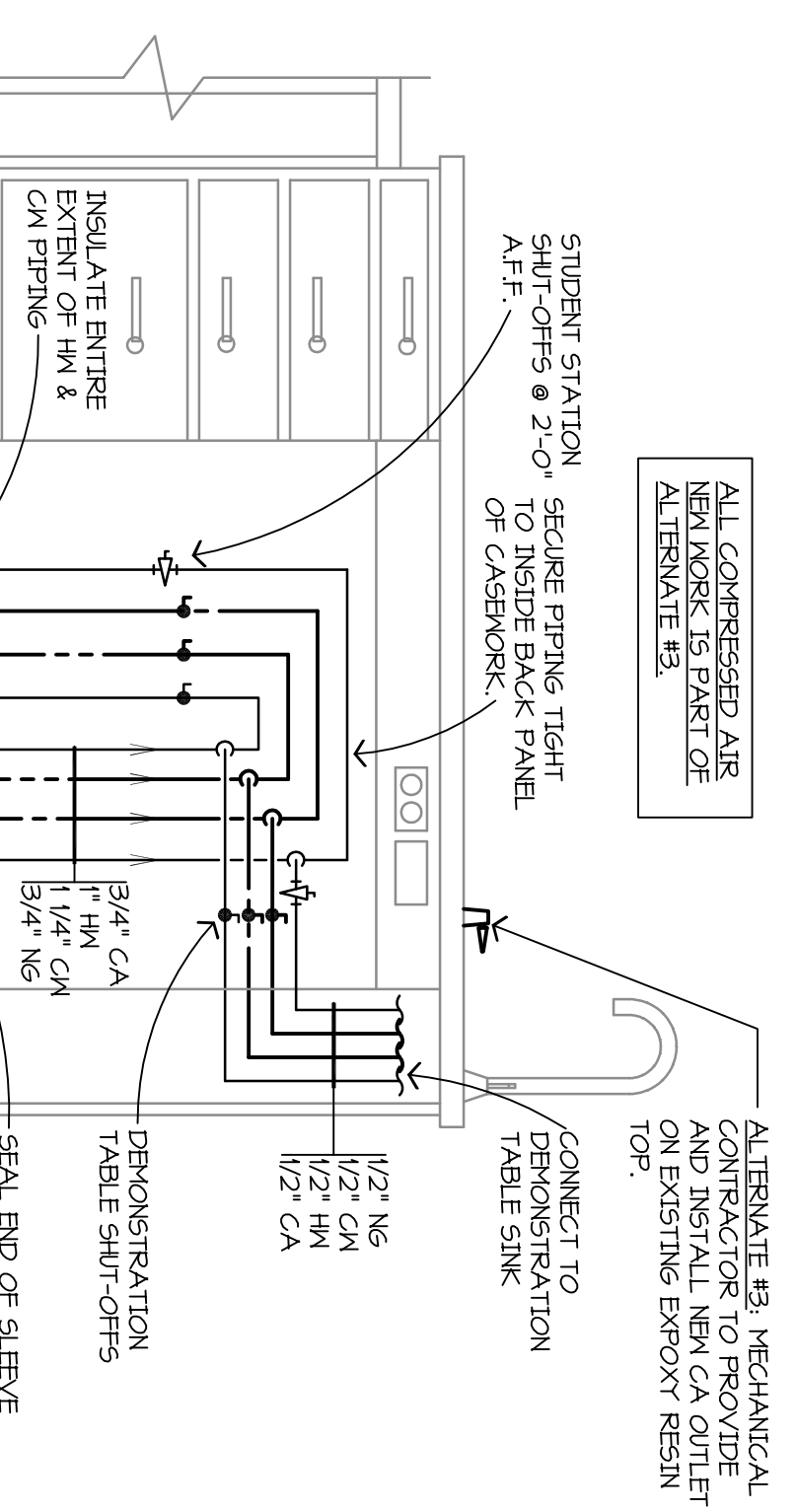
- HAZ. NEW/WORK-ERIED NOTES:
1. BALANCE RETURN AIR BELONGING TO INDICATED CH.
 2. PROVIDE POLE WALL DUCTWORK ON SPLIT 7' AND RETURN DUCT FROM CONNECTION TO RDU TO POINT SHOWN.
 3. EXHAUST SYSTEM. SEE DETAIL F1 ON SHEET FOR EXHAUST FAN LOCATION REQUIREMENTS AT NEW LOCATION.
 4. PROVIDE NEW CEILING AND BE INSTALLED EXISTING FINE HOOD EXHAUST FAN FERS AS SHOWN IN DETAIL F2 ON SHEET. PROVIDE EXHAUST FAN TO FINE HOOD. CONNECTING EXHAUST FAN TO FINE HOOD. PROVIDE GAS REGULATOR INDEPENDENT OF PRESSURE PER MANUFACTURER RECOMMENDATION.
 5. PROVIDE GAS REGULATOR INDEPENDENT OF PRESSURE PER MANUFACTURER RECOMMENDATION.
- PLUMBING NEW/WORK-ERIED NOTES:
1. SEE DETAIL H4 ON SHEET H4 FOR PIPING ROUTING AT/IN/TEACHER STATION.
 2. RE-INSTALL EXISTING EMERGENCY SHOWER EMERGENCY SHOWER PIPING DETAIL.
 3. PROVIDE ANY VENT, POINT-OF-USE MIXING NEUTRALIZER BELOW SINK, WITHIN CABINETS.
 4. EMERGENCY GAS SHUT-OFF WITH SOLENOID VALVE AND REHABILITATION AT 3\"/>
 - 5. NEW GAS REGULATOR AND SHUT-OFF. REDUCE PRESSURE TO APPROX. 7\"/>
 - 6. COORDINATE EXTENT OF FLOOR REMOVAL REQUIRED FOR INSTALLATION OF NEW TRAVELER. SAME CUTTING OF FLOOR BY OTHERS.
 - 7. RE-INSTALL EXISTING WASTE PIPING. FACET AND NEUTRALIZATION TANK. MOUNTED SINKS. PROVIDE NEW LEPHSTONE IN EXISTING NEUTRALIZATION TANK.
 - 8. RE-INSTALL EXISTING FACET AND WASTE TRAP SERVING RELOCATED EXISTING COMMERCIAL SINK.

C1 1/8" = 1'-0" UNDERGROUND/TUNNEL MECHANICAL NEW WORK PLAN

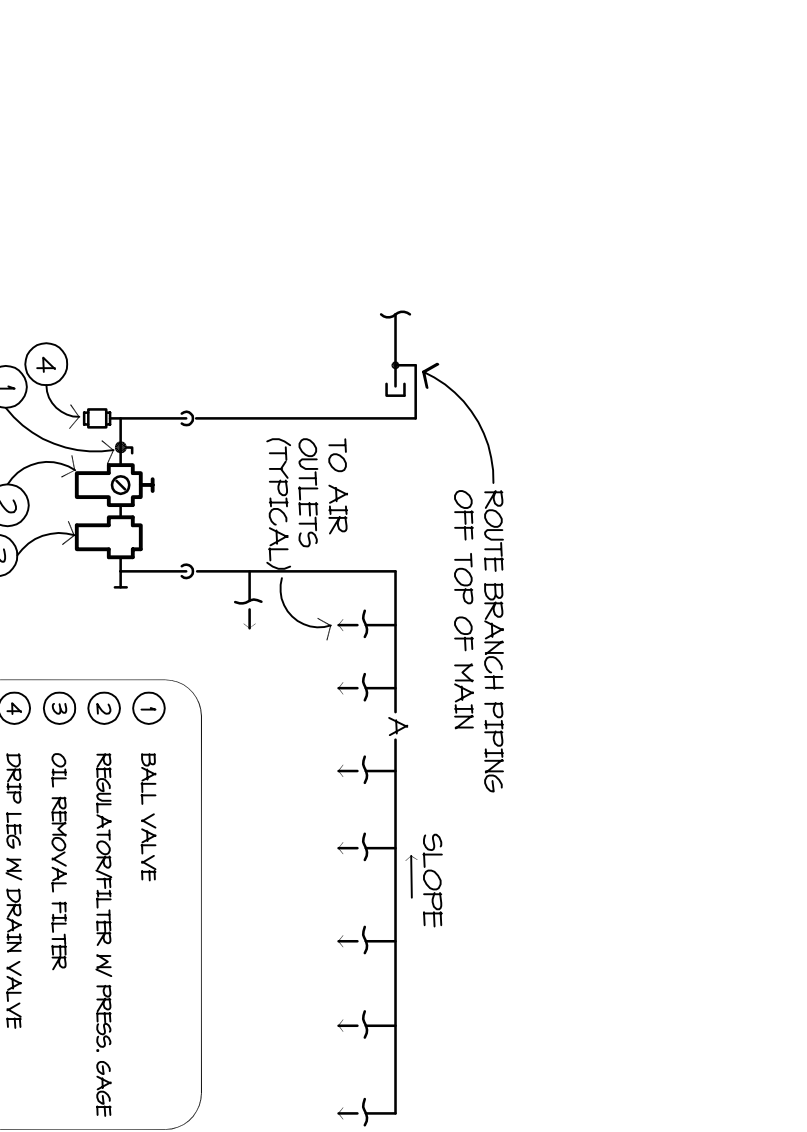
C6 1/8" = 1'-0" MAIN LEVEL MECHANICAL NEW WORK PLAN



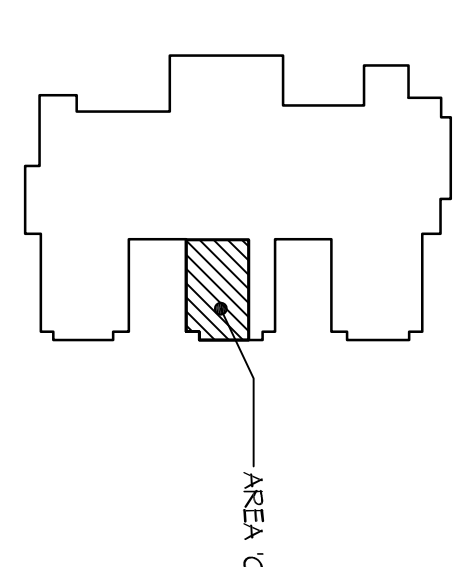
H1 NO SCALE EMERG. EYEWASH/SHOWER PIPING DETAIL



H4 NO SCALE TEACHER STATION UTILITY SHUT-OFF SCHEMATIC



H7 NO SCALE COMPRESSED AIR SYSTEM PIPING SCHEMATIC



Whi Science Lab
Remodel
510 Emerick St
Ypsilanti, MI 48198

Washtenaw Intermediate
School District
1819 South Wogner
Ann Arbor, Michigan 48106

WOLD
architects
engineers
www.woldae.com

333 West Seventh Street
Suite 201
Royal Oak, MI 48067

414 248 284 0511
484 248 844 0515
mi@woldae.com

Project Name: **Washtenaw Intermediate School District**

Project Number: **0202259263**

Revision: **02/25/2024**

Revision	Date	By

UNDERGROUND & MAIN LEVEL MECHANICAL NEW WORK PLANS

Scale: 1/8" = 1'-0"

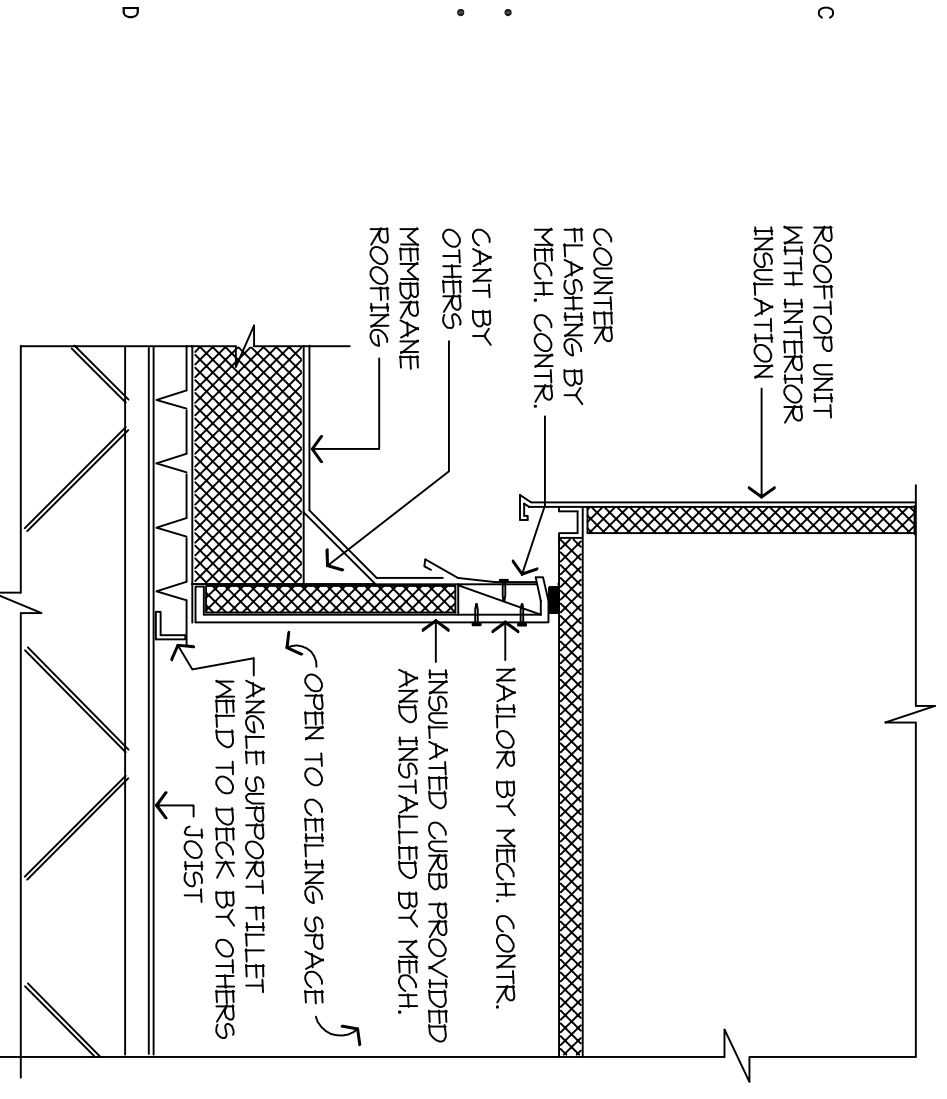
M1.1

ENERGY RECOVERY UNIT SCHEDULE																			
UNIT NO.	SERIES	MANFAC. NUMBER	MODEL NUMBER	UNIT TYPE	CFM	O.A.	SUPPLY FAN DATA				RETURN FAN DATA								
REF. 1	SCHEMATIC	LANDING	GREENHOUSE	CV	1450	1450	TYPE	HP	AMPS	DRIVE TYPE	CFM	EX. SP. IN.	REF. 1	HP	AMPS	DRIVE TYPE	CFM	EX. SP. IN.	

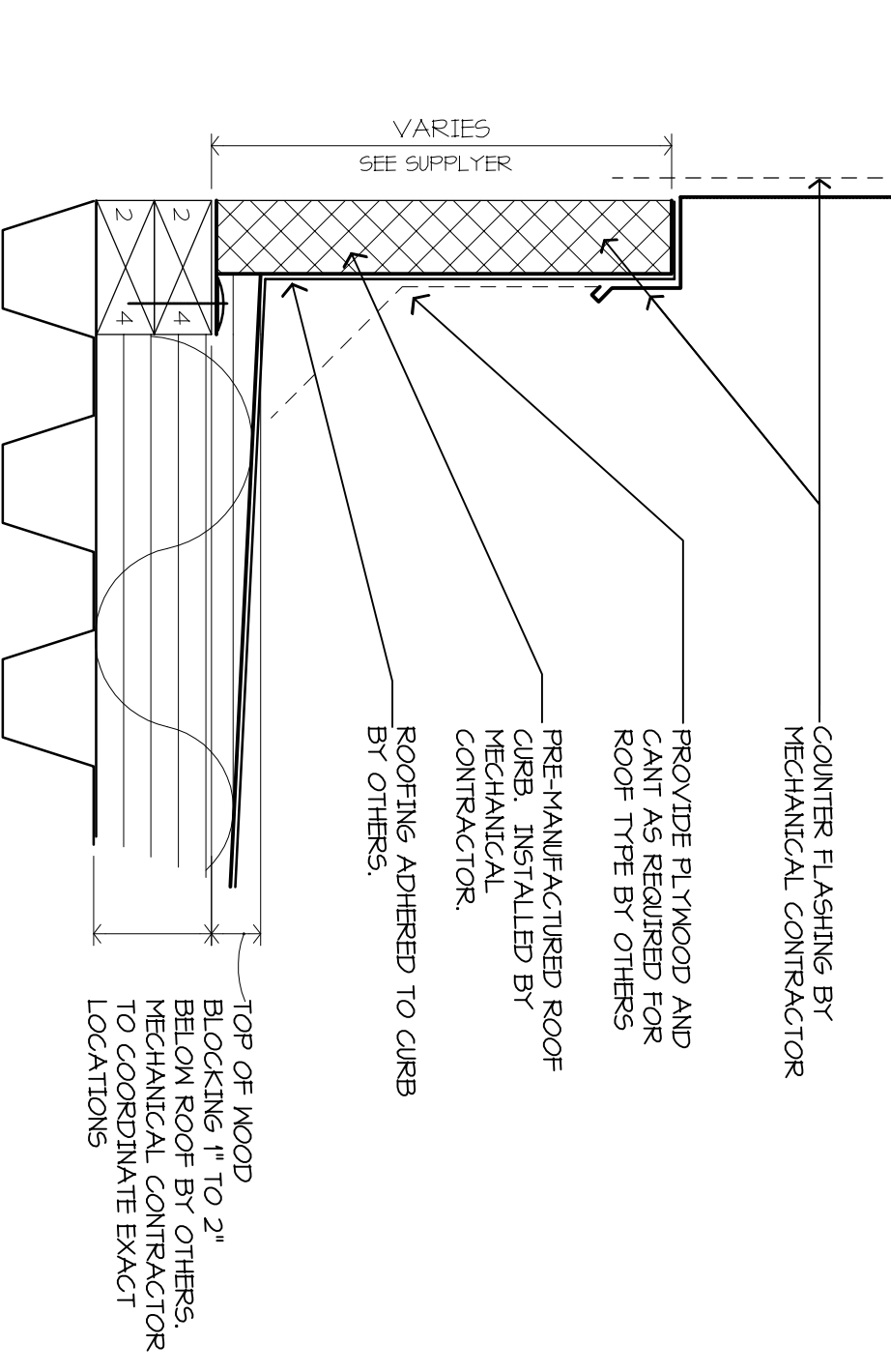
NOTES:
1. PROVIDE INLET HOOD WITH BIRDSCREEN, NOTICED DAMPER AND FILTER SECTION (68% EFFICIENCY).
2. PROVIDE INLET HOOD WITH BIRDSCREEN, NOTICED DAMPER AND FILTER SECTION.
3. PROVIDE WITH 90% O.A. AND ECONOMIZER.
4. PROVIDE WITH DISCONNECT SWITCH AND CONVENIENCE OUTLET COMPLETE WITH STEP DOWN TRANSFORMER.
5. ELECTRICAL SERVICE REQUIRED. SEE OTHER DRAWINGS FOR ELECTRICAL SYMBOLS AND WIRING SCHEDULE 50-307-149.

EXHAUST FAN SCHEDULE - ALTERNATE #1																				
UNIT NO.	SERIES	MANUFACTURER	MODEL NO.	TYPE	CFM	TOTAL M.C.	RFM	BHP	HP	VOLTS	PH	DAMPER SIZE	DRIVE TYPE	COMPONENTS AND ACCESSORIES	REMARKS					
REF. 1	SCHEMATIC	GREENHECK	6-0752	CENTRIFUGAL	200	0.25	1328	0.02	1/25	115	1	8"X 10"	DIRECT	YES	NO	YES	NO	YES	NO	

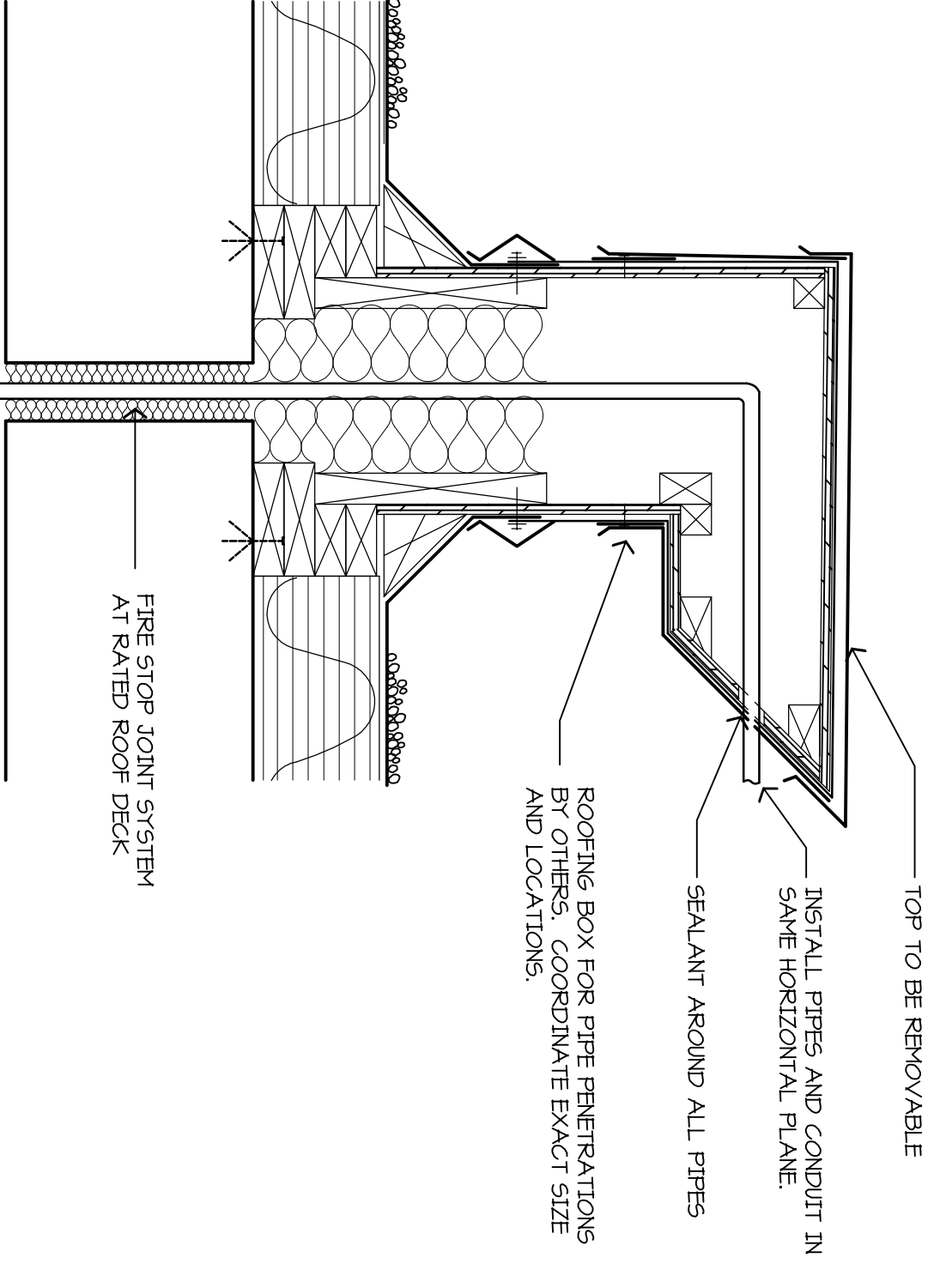
NOTES:
1. INSTALL IN ACCORDANCE WITH MANUFACTURER'S INSTALLATION INSTRUCTIONS.
2. PROVIDE WITH ALUMINUM BIRDSCREEN AND INLET KIT.
3. PROVIDE WITH MODEL GRIP OR FITTED ROOF CURB. VERIFY EXACT ROOF FITCH PRIOR TO ORDERING.



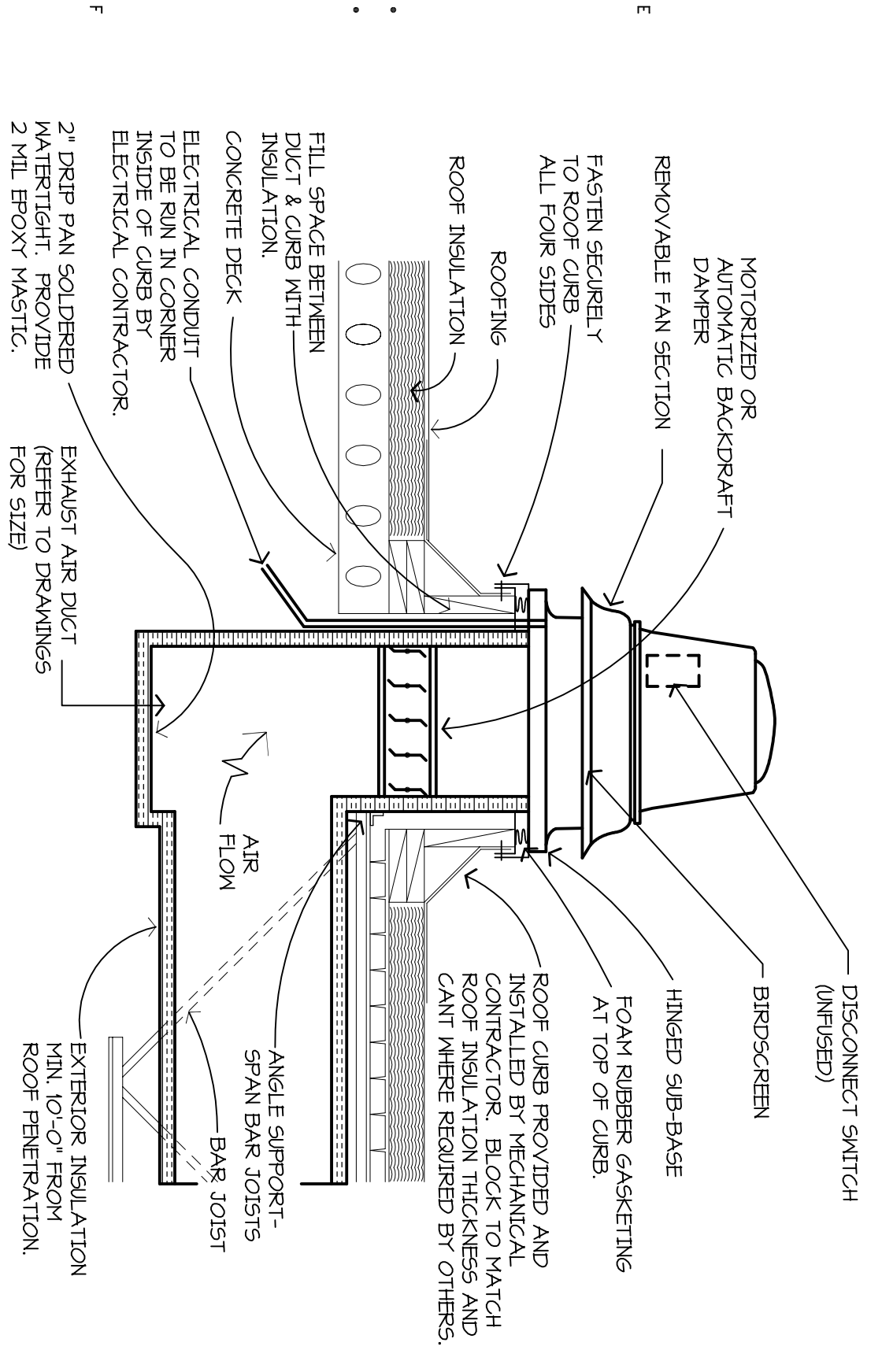
D1 ROOFTOP UNIT CURB DETAIL
NO SCALE



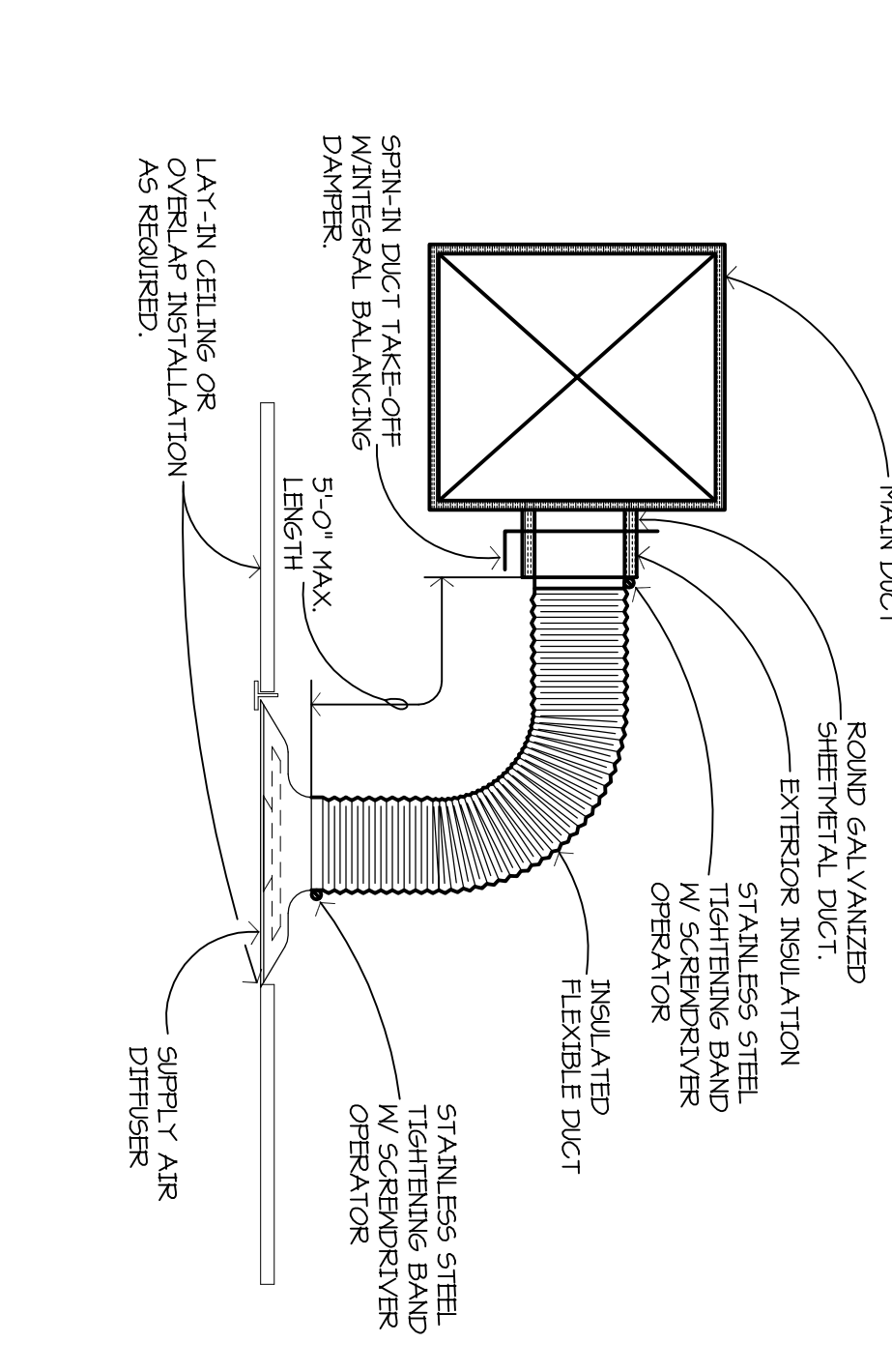
D4 MANUFACTURED CURB DETAIL
NO SCALE



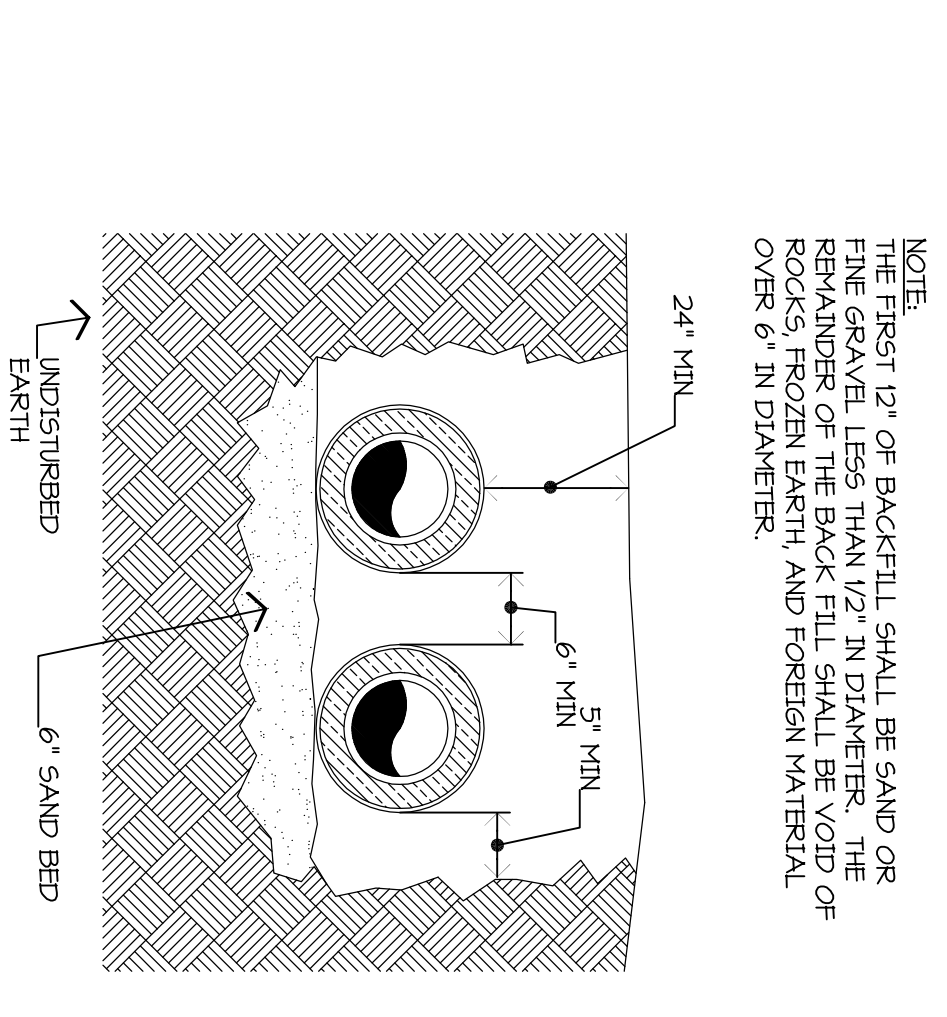
D6 ROOF PIPE PENETRATION DETAIL
NO SCALE



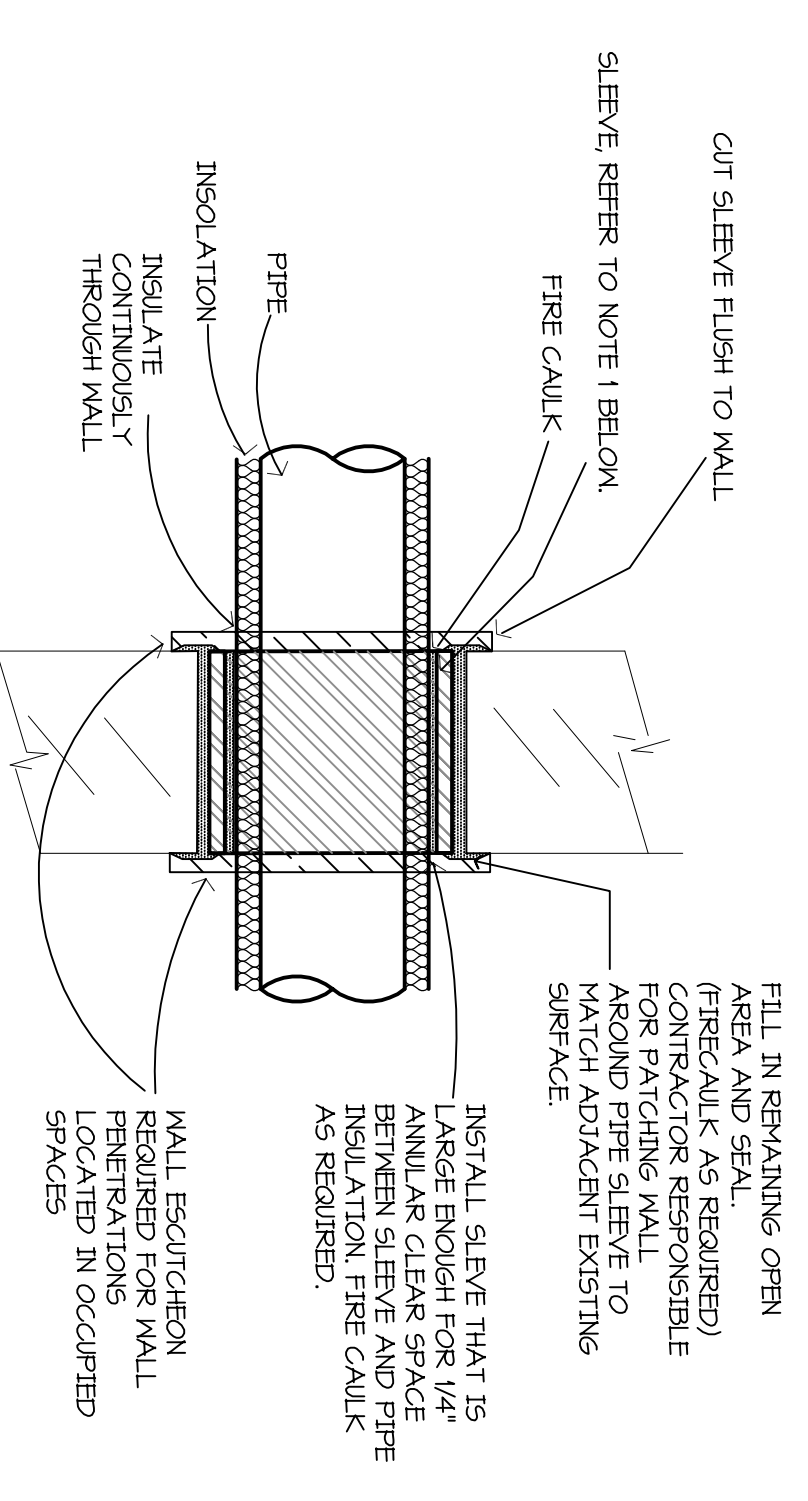
F1 TYPICAL P.R.V. EXHAUST FAN DETAIL
NO SCALE



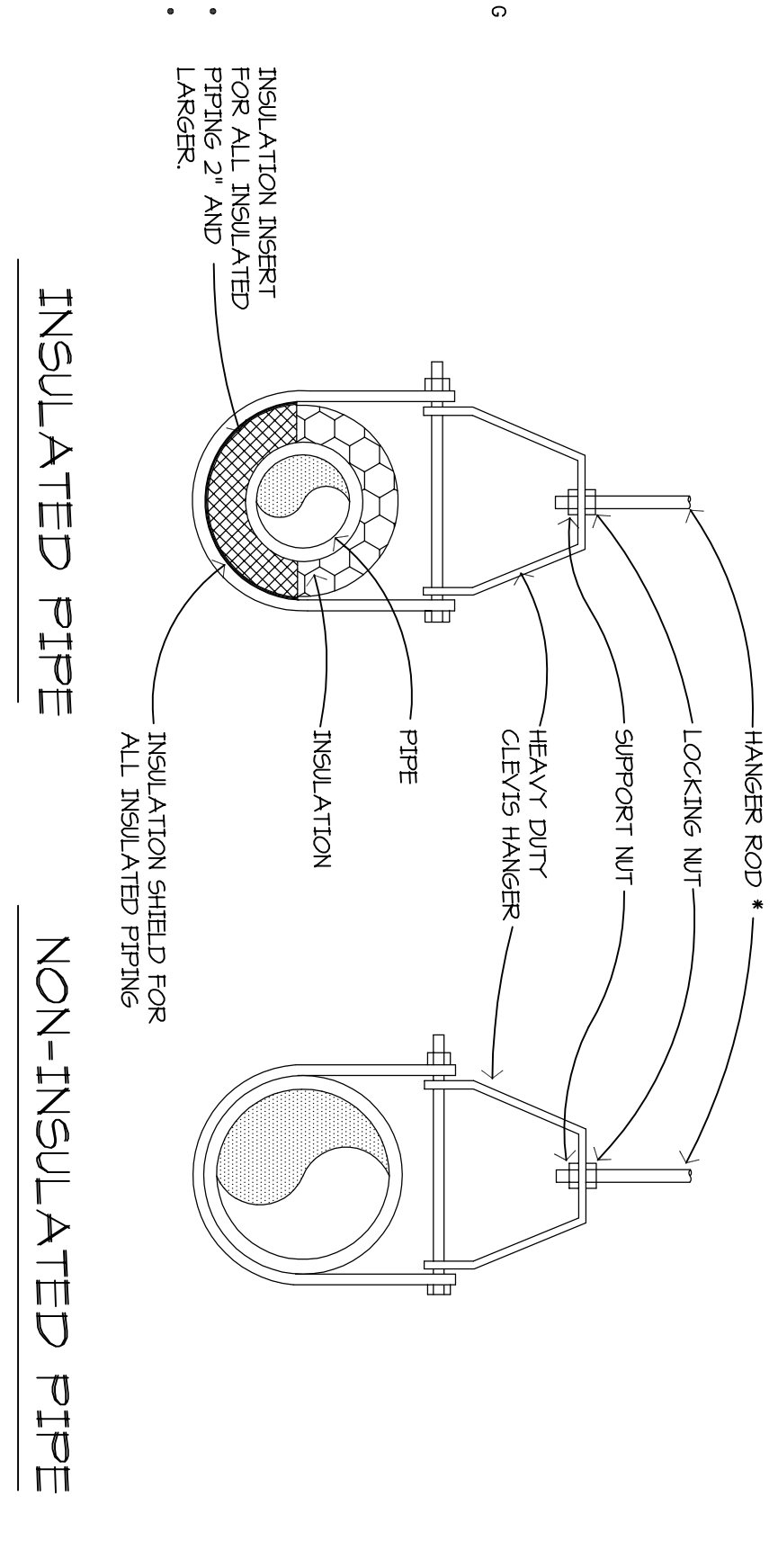
F4 FLEXIBLE DUCT CONNECTION DETAIL
NO SCALE



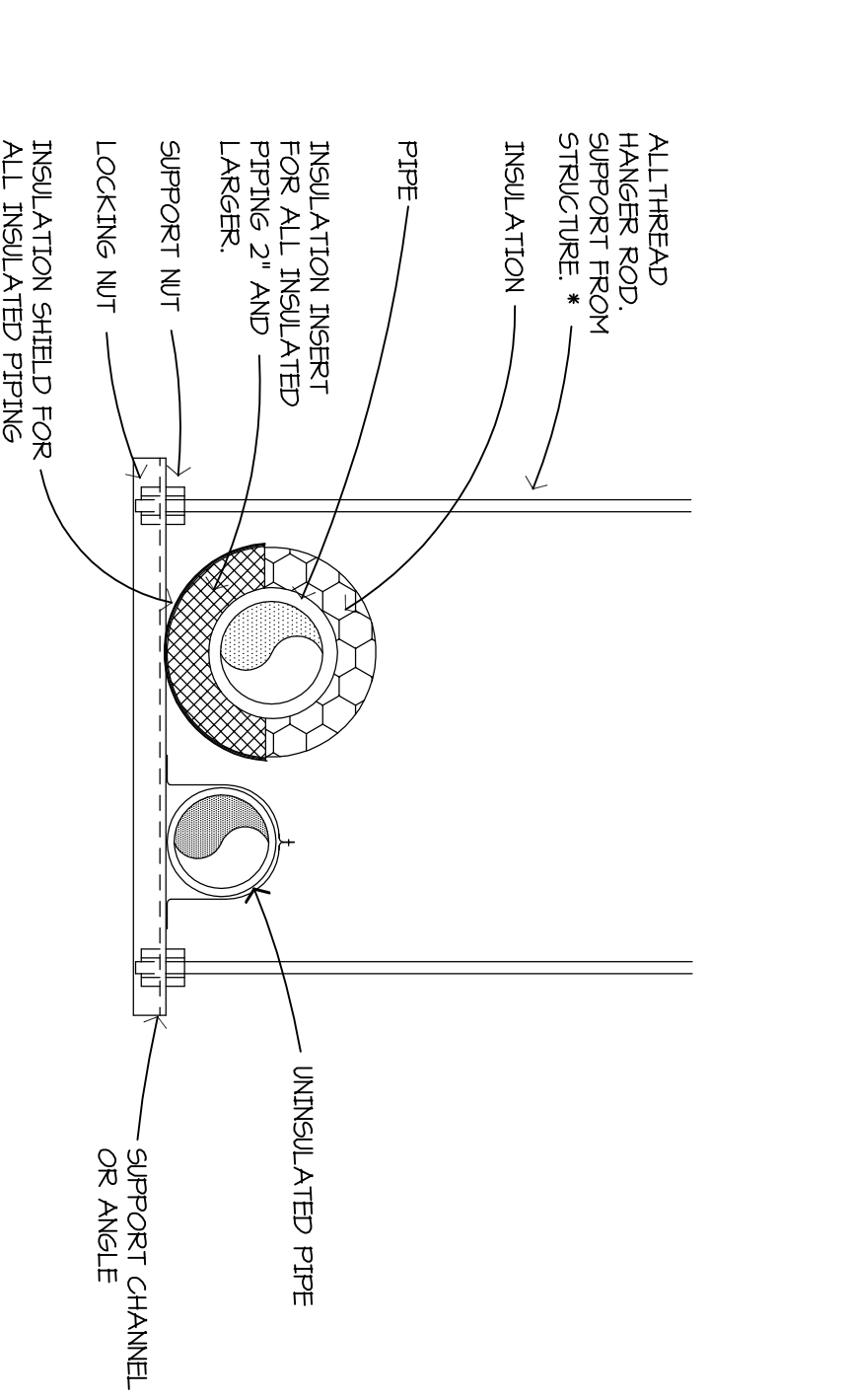
F6 UNDERGROUND PIPING DETAIL
NO SCALE



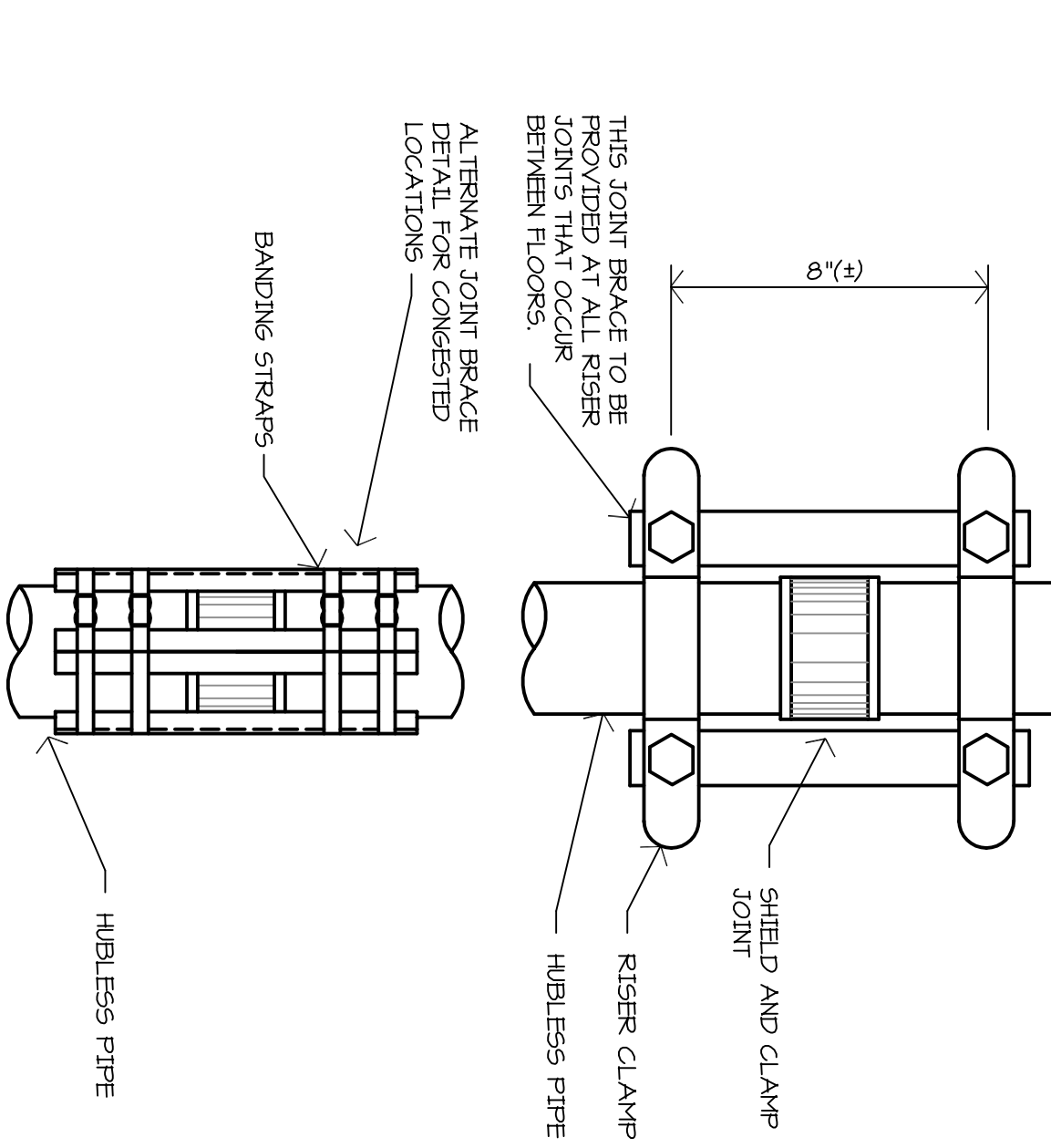
F9 PIPE PENETRATION THROUGH INTERIOR WALL
NO SCALE



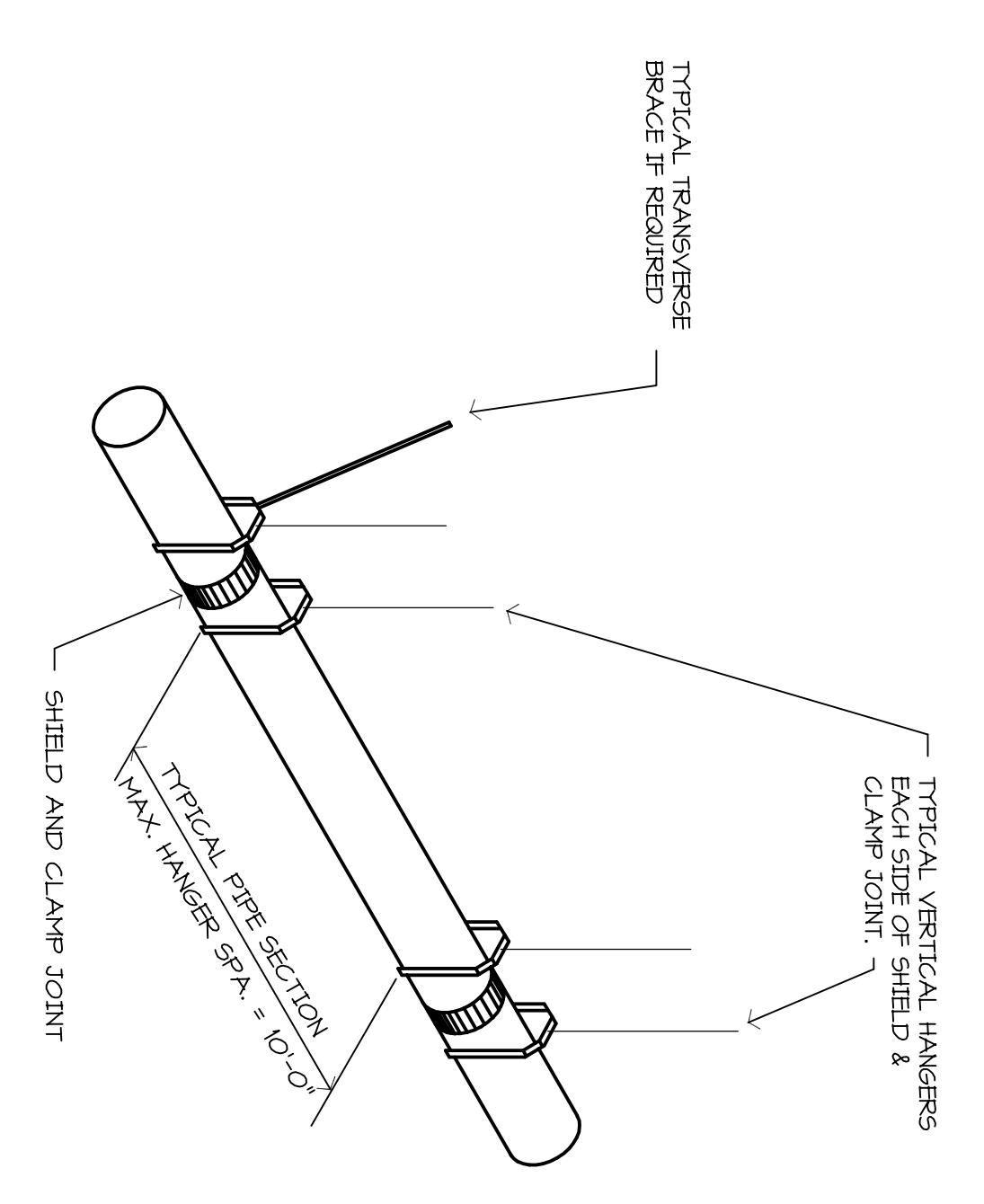
H1 CLEVIS PIPE HANGER DETAIL
NO SCALE



H4 TRAPEZE PIPE HANGER DETAIL
NO SCALE



H6 HUBLESS PIPE RISER DETAIL
NO SCALE



H9 HUBLESS PIPE INSTALLATION DETAIL
NO SCALE



Revision	Date	By	Check

Date:	8/4/03
Drawn:	4/5/03
Checked:	ED
Sheet:	31

MECHANICAL SCHEDULES AND DETAILS