



architects  
engineers  
www.woldae.com

333 W. Seventh Street  
Three Hundred Twenty  
Royal Oak, MI 48067

tel 248 284 0611  
fax 248 284 0615  
mail@woldae.com

**To:** Prospective Bidders  
**From:** Wold Architects and Engineers *27*  
**Date:** April 16, 2013  
**Comm. No:** 134003

**Subject:** Addendum No. 2 for Bidding Documents for the: WIHi Science Lab Remodel  
Ypsilanti, Michigan 48198

BIDS DUE APRIL 19, 2013 AT 2:00 P.M.

This addendum forms a part of the Contract Documents dated April 5, 2013. Acknowledge receipt of this Addendum on the space provided on the Bid Form. Failure to do so may result in disqualification of Bid.

This Addendum consists of one (1) typed sheet and attachments:

Pre-Bid Walk Through Sign In Sheet

Specification Section: 00 73 43 Prevailing Wages/Informational Sheet: Prevailing Wages on State Projects, Official 2012 Prevailing Wage Rates for State Funded Projects, 00 21 00 Allowances

Drawings: RM1/M1.1 and RM2/M1.1

#### PROJECT MANUAL

1. SPECIFICATION SECTION 00 73 43 PREVAILING WAGES.
  - A. Add the following attachments:
    - 1) Informational Sheet: Prevailing Wages on State Projects.
    - 2) Official 2012 Prevailing Wage Rates for State Funded Projects.
2. SPECIFICATION SECTION 01 21 00 ALLOWANCES.
  - A. Add the following attachments:
    - 1) Quote for Building Automation System work scope from ControlNET, LLC.
3. SPECIFICATION SECTION 07 51 15 ROOF PATCHING.
  - A. Delete paragraph 1.02.B in its entirety.
  - B. Delete paragraph 1.02.D in its entirety
  - C. Delete paragraph 1.02.E in its entirety.

#### PRIOR APPROVALS

The following schedule amends designated specification sections to list additional acceptable manufacturers. Use of any product by any of these manufacturers will be permitted only if after review of shop drawings or detailed product data per Section 01 33 00, Architect determines that proposed materials or equipment are equivalent in performance, construction and appearance to product(s) specified.

Where anticipated product substitutions would alter the design or space requirements indicated on the Drawings, pay for cost of design and construction revisions including the cost of associated work by other contractors.

Minnesota  
Illinois  
Michigan  
Colorado  
Iowa



architects  
engineers  
www.woldae.com

For complete requirements, see Specification Section 01 25 00 – Substitutions and Product Options.

<u>Section No.</u>	<u>Item</u>	<u>Type</u>	<u>Acceptable Manufacturer</u>
123553	2.01(A)		Wood Metal Industries

DRAWINGS

1. DRAWING A1.11 MAIN LEVEL FLOOR PLAN.
  - A. At Floor Plan General Notes add the following note number '9' to read:
    - "9. All markerboards and tackboards will be provided by the Owner, the Contractor shall install all provided boards."
2. DRAWING M1.1 UNDERGROUND AND MAIN LEVEL MECHANICAL NEW WORK PLANS.
  - A. Refer to sketches RM1/M1.1 and RM2/M1.1 (Issued this Addendum), add Details E1 and E4.

END OF ADDENDUM #2

WOLD

architects  
engineers  
www.woldae.com

pre-bid sign in

Date: April 16, 2013  
Project: WIHi Science Lab Remodel  
Commission No.: 134003

Please Print Clearly

Full Name:	Company:	Phone Number:	E-Mail:
BILL WIEMER	AXIOM CSG, LLC	248-446-1104	ESTIMATING@AXIOMCSG.LLC.COM
Danny O'Connell	D.O. ELECTRIC	734-654-8337	DO.E@PROVIDE.NET
BOWEN LUMBER	DLOWE LUMBER	<del>734</del> 4226402	<del>RESERVED@DLOWELUMBER.COM</del>
Dan Gault	DWG Plumbing (Bidding as GC)	734-721-0290	dwgplumbing@hotmail.com
Keith Bullinger	Livingston Power	(517) 546-8100	Keith@LivingstonPower.com





RICK SNYDER  
GOVERNOR

## STATE OF MICHIGAN

Prevailing Wages  
PO Box 30476  
Lansing, MI 48909  
517-322-1825



### **Informational Sheet: Prevailing Wages on State Projects**

#### REQUIREMENTS OF THE PREVAILING WAGES ON STATE PROJECTS ACT, PUBLIC ACT 166 OF 1965

The State of Michigan determines prevailing rates pursuant to the Prevailing Wages on State Projects Act, Public Act 166 of 1965, as amended. The purpose of establishing prevailing rates is to provide minimum rates of pay that must be paid to workers on construction projects for which the state or a school district is the contracting agent and which is financed or financially supported by the state. By law, prevailing rates are compiled from the rates contained in collectively bargained agreements which cover the locations of the state projects. The official prevailing rate schedule provides an hourly rate which includes *wage and fringe benefit totals* for designated construction mechanic classifications. The overtime rates also include *wage and fringe benefit totals*. Please pay special attention to the overtime and premium pay requirements. Prevailing wage is satisfied when wages plus fringe benefits paid to a worker are equal to or greater than the required rate.

#### **State of Michigan responsibilities under the law:**

- The department establishes the prevailing rate for each classification of construction mechanic **requested by a contracting agent** prior to contracts being let out for bid on a state project.

#### **Contracting agent responsibilities under the law:**

- If a contract is not awarded or construction does not start within 90 days of the date of the issuance of rates, a re-determination of rates must be requested by the contracting agent.
- Rates for classifications needed but not provided on the Prevailing Rate Schedule, **must** be obtained **prior** to contracts being let out for bid on a state project.
- The contracting agent, by written notice to the contractor and the sureties of the contractor known to the contracting agent, may terminate the contractor's right to proceed with that part of the contract, for which less than the prevailing rates have been or will be paid, and may proceed to complete the contract by separate agreement with another contractor or otherwise, and the original contractor and his sureties shall be liable to the contracting agent for any excess costs occasioned thereby.

#### **Contractor responsibilities under the law:**

- Every contractor and subcontractor shall keep posted on the construction site, in a conspicuous place, a copy of all prevailing rates prescribed in a contract.
- Every contractor and subcontractor shall keep an accurate record showing the name and occupation of and the actual wages and benefits paid to each construction mechanic employed by him in connection including certified payroll, as used in the industry, with said contract. This record shall be available for reasonable inspection by the contracting agent or the department.
- Each contractor or subcontractor is separately liable for the payment of the prevailing rate to its employees.
- The prime contractor is responsible for advising all subcontractors of the requirement to pay the prevailing rate prior to commencement of work.
- The prime contractor is secondarily liable for payment of prevailing rates that are not paid by a subcontractor.
- A construction mechanic *shall only* be paid the apprentice rate if registered with the United States Department of Labor, Bureau of Apprenticeship and Training and the rate is included in the contract.

#### **Enforcement:**

A person who has information of an alleged prevailing wage violation on a state project may file a complaint with the State of Michigan. The department will investigate and attempt to resolve the complaint informally. During the course of an investigation, if the requested records and posting certification are not made available in compliance with Section 5 of Act 166, the investigation will be concluded and a referral to the Office of Attorney General for civil action will be made. The Office of Attorney General will pursue costs and fees associated with a lawsuit if filing is necessary to obtain records.





RICK SNYDER  
GOVERNOR

## STATE OF MICHIGAN

Prevailing Wages  
PO Box 30476  
Lansing, MI 48909  
517-322-1825



### Informational Sheet: Prevailing Wages on State Projects

#### General Information Regarding Fringe Benefits

**Certain** fringe benefits **may** be credited toward the payment of the Prevailing Wage Rate:

- If a fringe benefit is paid directly to a construction mechanic
- If a fringe benefit contribution or payment is made on behalf of a construction mechanic
- If a fringe benefit, which may be provided to a construction mechanic, is pursuant to a written contract or policy
- If a fringe benefit is paid into a fund, for a construction mechanic

When a fringe benefit is not paid by an hourly rate, the hourly credit will be calculated based on the annual value of the fringe benefit divided by 2080 hours per year (52 weeks @ 40 hours per week).

The following is an example of the types of fringe benefits allowed and how an hourly credit is calculated:

Vacation	40 hours X \$14.00 per hour = \$560/2080 =	\$ .27
Dental insurance	\$31.07 monthly premium X 12 mos. = \$372.84 /2080 =	\$ .18
Vision insurance	\$5.38 monthly premium X 12 mos. = \$64.56/2080 =	\$ .03
Health insurance	\$230.00 monthly premium X 12 mos. = \$2,760.00/2080 =	\$1.33
Life insurance	\$27.04 monthly premium X 12 mos. = \$324.48/2080 =	\$ .16
Tuition	\$500.00 annual cost/2080 =	\$ .24
Bonus	4 quarterly bonus/year x \$250 = \$1000.00/2080 =	\$ .48
401k Employer Contribution	\$2000.00 total annual contribution/2080 =	\$ .96
<b>Total Hourly Credit</b>		<b>\$3.65</b>

Other examples of the types of fringe benefits allowed:

- Sick pay
- Holiday pay
- Accidental Death & Dismemberment insurance premiums

The following are examples of items that **will not** be credited toward the payment of the Prevailing Wage Rate

- Legally required payments, such as:
  - Unemployment Insurance payments
  - Workers' Compensation Insurance payments
  - FICA (Social Security contributions, Medicare contributions)
- Reimbursable expenses, such as:
  - Clothing allowance or reimbursement
  - Uniform allowance or reimbursement
  - Gas allowance or reimbursement
  - Travel time or payment
  - Meals or lodging allowance or reimbursement
  - Per diem allowance or payment
- Other payments to or on behalf of a construction mechanic that are not wages or fringe benefits, such as:
  - Industry advancement funds
  - Financial or material loans







**State of Michigan**  
 DEPARTMENT OF LICENSING AND REGULATORY AFFAIRS  
 MICHIGAN OCCUPATIONAL SAFETY AND HEALTH ADMINISTRATION  
 MARTHA B. YODER  
 DIRECTOR

**OVERTIME PROVISIONS for MICHIGAN PREVAILING WAGE RATE COMMERCIAL SCHEDULE**

1. Overtime is represented as a nine character code. Each character represents a certain period of time after the first 8 hours Monday thru Friday.

	Monday thru Friday	Saturday	Sunday & Holidays	Four 10s
First 8 Hours		4	8	9
9th Hour	1	5		
10th Hour	2	6		
Over 10 hours	3	7		

Overtime for Monday thru Friday after 8 hours:

- the 1st character is for time worked in the 9th hour (8.1 - 9 hours)
- the 2nd character is for time worked in the 10th hour (9.1 - 10 hours)
- the 3rd character is for time worked beyond the 10th hour (10.1 and beyond)

Overtime on Saturday:

- the 4th character is for time worked in the first 8 hours on Saturday (0 - 8 hours)
- the 5th character is for time worked in the 9th hour on Saturday (8.1 - 9 hours)
- the 6th character is for time worked in the 10th hour (9.1 - 10 hours)
- the 7th character is for time worked beyond the 10th hour (10.01 and beyond)

Overtime on Sundays & Holidays

The 8th character is for time worked on Sunday or on a holiday

Four Ten Hour Days

The 9th character indicates if an optional 4-day 10-hour per day workweek can be worked **between Monday and Friday without paying overtime after 8 hours worked, unless otherwise noted in the rate schedule. To utilize a 4 ten workweek, notice is required from the employer to employee prior to the start of work on the project.**

2. Overtime Indicators Used in the Overtime Provision:

- H - means TIME AND ONE-HALF due
- X - means TIME AND ONE-HALF due after 40 HOURS worked
- D - means DOUBLE PAY due
- Y - means YES an optional 4-day 10-hour per day workweek can be worked without paying overtime after 8 hours worked
- N - means NO an optional 4-day 10-hour per day workweek *can not* be worked without paying overtime after 8 hours worked

3. EXAMPLES:

HHHHHHHDN - This example shows that the 1½ rate must be used for time worked after 8 hours Monday thru Friday (*characters 1 - 3*); for all hours worked on Saturday, 1½ rate is due (*characters 4 - 7*). Work done on Sundays or holidays must be paid double time (*character 8*). The N (*character 9*) indicates that 4 ten-hour days is not an acceptable workweek at regular pay.

XXXHHHHDY - This example shows that the 1½ rate must be used for time worked after 40 hours are worked Monday thru Friday (*characters 1-3*); for hours worked on Saturday, 1½ rate is due (*characters 4 - 7*). Work done on Sundays or holidays must be paid double time (*character 8*). The Y (*character 9*) indicates that 4 ten-hour days is an acceptable alternative workweek.

LARA is an equal opportunity employer.  
 Auxiliary aids, services and other reasonable accommodations are available upon request to individuals with disabilities.

## ENGINEERS - CLASSES OF EQUIPMENT LIST

### UNDERGROUND ENGINEERS

#### CLASS I

Backfiller Tamper, Backhoe, Batch Plant Operator, Clam-Shell, Concrete Paver (2 drums or larger), Conveyor Loader (Euclid type), Crane (crawler, truck type or pile driving), Dozer, Dragline, Elevating Grader, End Loader, Gradall (and similar type machine), Grader, Power Shovel, Roller (asphalt), Scraper (self propelled or tractor drawn), Side Broom Tractor (type D-4 or larger), Slope Paver, Trencher (over 8' digging capacity), Well Drilling Rig, Mechanic, Slip Form Paver, Hydro Excavator.

#### CLASS II

Boom Truck (power swing type boom), Crusher, Hoist, Pump (1 or more 6" discharge or larger gas or diesel powered by generator of 300 amps or more, inclusive of generator), Side Boom Tractor (smaller than type D-4 or equivalent), Tractor (pneu-tired, other than backhoe or front end loader), Trencher (8' digging capacity and smaller), Vac Truck.

#### CLASS III

Air Compressors (600 cfm or larger), Air Compressors (2 or more less than 600 cfm), Boom Truck (non-swinging, non-powered type boom), Concrete Breaker (self-propelled or truck mounted, includes compressor), Concrete Paver (1 drum, ½ yard or larger), Elevator (other than passenger), Maintenance Man, Mechanic Helper, Pump (2 or more 4" up to 6" discharge, gas or diesel powered, excluding submersible pump), Pumpcrete Machine (and similar equipment), Wagon Drill Machine, Welding Machine or Generator (2 or more 300 amp or larger, gas or diesel powered).

#### CLASS IV

Boiler, Concrete Saw (40HP or over), Curing Machine (self-propelled), Farm Tractor (w/attachment), Finishing Machine (concrete), Firemen, Hydraulic Pipe Pushing Machine, Mulching Equipment, Oiler (2 or more up to 4", exclude submersible), Pumps (2 or more up to 4" discharge if used 3 hrs or more a day-gas or diesel powered, excluding submersible pumps), Roller (other than asphalt), Stump Remover, Vibrating Compaction Equipment (6' wide or over), Trencher (service) Sweeper (Wayne type and similar equipment), Water Wagon, Extend-a-Boom Forklift.

### HAZARDOUS WASTE ABATEMENT ENGINEERS

#### CLASS I

Backhoe, Batch Plant Operator, Clamshell, Concrete Breaker when attached to hoe, Concrete Cleaning Decontamination Machine Operator, Concrete Pump, Concrete Paver, Crusher, Dozer, Elevating Grader, Endloader, Farm Tractor (90 h.p. and higher), Gradall, Grader, Heavy Equipment Robotics Operator, Hydro Excavator, Loader, Pug Mill, Pumpcrete Machines, Pump Trucks, Roller, Scraper (self-propelled or tractor drawn), Side Boom Tractor, Slip Form Paver, Slope Paver, Trencher, Ultra High Pressure Waterjet Cutting Tool System Operator, Vactors, Vacuum Blasting Machine Operator, Vertical Lifting Hoist, Vibrating Compaction Equipment (self-propelled), and Well Drilling Rig.

#### CLASS II

Air Compressor, Concrete Breaker when not attached to hoe, Elevator, End Dumps, Equipment Decontamination Operator, Farm Tractor (less than 90 h.p.), Forklift, Generator, Heater, Mulcher, Pigs (Portable Reagent Storage Tanks), Power Screens, Pumps (water), Stationary Compressed Air Plant, Sweeper, Water Wagon and Welding Machine.

**State of Michigan**

WHPWRequest@michigan.gov

**Official Request #: 440**

**Requestor:** Washtenaw Intermediate School District

**Project Description:** WIHI Science Lab - Remodel

**Project Number:**

**Washtenaw County  
Official 2013 Prevailing Wage Rates for State Funded Projects**

**Issue Date:** 4/11/2013

**Contract must be awarded by:** 7/10/2013

Page 1 of 31

<u>Classification</u>									
Name	Description		Last Updated	Straight Hourly	Time and a Half	Double Time	Overtime Provision		
<b>Asbestos &amp; Lead Abatement Laborer</b>									
Asbestos & Lead Abatement Laborer		MLDC	10/23/2012	\$38.85	\$51.87	\$64.89	H H H X X X D Y		
4 ten hour days @ straight time allowed Monday-Saturday, must be consecutive calendar days									
<b>Asbestos &amp; Lead Abatement, Hazardous Material Handler</b>									
Asbestos and Lead Abatement, Hazardous Material Handler		AS207	10/23/2012	\$38.85	\$52.00	\$65.15	H H H X X X D Y		
4 ten hour days @ straight time allowed Monday-Saturday,									
<b>Boilermaker</b>									
Boilermaker		BO169	8/14/2009	\$54.70	\$81.08	\$107.45	H H H H H H D Y		
<b>Apprentice Rates:</b>									
	1st 6 months			\$40.31	\$59.49	\$78.67			
	2nd 6 months			\$41.45	\$61.21	\$80.95			
	3rd 6 months			\$42.57	\$62.88	\$83.19			
	4th 6 months			\$43.69	\$64.57	\$85.43			
	5th 6 months			\$44.81	\$66.24	\$87.67			
	6th 6 months			\$49.53	\$73.40	\$97.26			
	7th 6 months			\$49.32	\$73.01	\$96.69			
	8th 6 months			\$51.58	\$76.40	\$101.21			

Official Request #: 440

Requestor: Washtenaw Intermediate School District

Project Description: WIHI Science Lab - Remodel

Project Number:

County: Washtenaw

**Official Rate Schedule**

Every contractor and subcontractor shall keep posted on the construction site, in a conspicuous place, a copy of all prevailing wage and fringe benefit rates prescribed in a contract.

# Official 2013 Prevailing Wage Rates for State Funded Projects

Issue Date: 4/11/2013

Contract must be awarded by: 7/10/2013

Page 2 of 31

Classification Name	Description	Last Updated	Straight Hourly	Time and a Half	Double Time	Overtime Provision
<b>Bricklayer</b>						
Bricklayer	BR9-14-BL	3/7/2013	\$50.28	\$66.33	\$82.37	H H H H H H H D Y
	<b>Apprentice Rates:</b>					
	0-749 hours		\$37.44	\$47.07	\$56.69	
	750-1499 hours		\$39.05	\$49.48	\$59.91	
	1500-2249 hours		\$40.65	\$51.88	\$63.11	
	2250-2999 hours		\$42.26	\$54.29	\$66.33	
	3000-3749 hours		\$43.86	\$56.69	\$69.53	
	3750-4499 hours		\$45.47	\$59.11	\$72.75	
	4500-5249 hours		\$47.07	\$61.51	\$75.95	
	5250-6000 hours		\$48.68	\$63.93	\$79.17	
<b>Carpenter</b>						
Carpenter	Carpet and Resilient Floor Layer, (does not include installation of prefabricated formica & parquet flooring which is to be paid carpenter rate)	CA1045 9/15/2011	\$46.04	\$65.56	\$85.07	X X H X X X X D Y
	<b>Apprentice Rates:</b>					
	1st 6 months		\$22.62	\$30.43	\$38.23	
	2nd 6 months		\$26.52	\$36.27	\$46.03	
	3rd 6 months		\$28.48	\$39.21	\$49.95	
	4th 6 months		\$30.43	\$42.14	\$53.85	
	5th 6 months		\$32.39	\$45.08	\$57.77	
	6th 6 months		\$34.33	\$48.00	\$61.65	
	7th 6 months		\$36.29	\$50.94	\$65.57	
	8th 6 months		\$38.23	\$53.84	\$69.45	
Carpenter-four 10s allowed Monday thru Saturday; double time due anytime when over 12 hours worked per day	CA687Z2	10/31/2012	\$52.20	\$74.66	\$97.11	X X H X X H H D Y
	<b>Apprentice Rates:</b>					
	1st year		\$31.99	\$44.35	\$56.69	
	3rd 6 months		\$34.23	\$47.70	\$61.17	
	4th 6 months		\$36.47	\$51.07	\$65.65	
	5th 6 months		\$38.73	\$54.45	\$70.17	
	6th 6 months		\$40.97	\$57.82	\$74.65	
	7th 6 months		\$43.21	\$61.17	\$79.13	
	8th 6 months		\$45.46	\$64.55	\$83.63	

Official Request #: 440  
 Requestor: Washtenaw Intermediate School District  
 Project Description: WIHI Science Lab - Remodel  
 Project Number:  
 County: Washtenaw

### Official Rate Schedule

Every contractor and subcontractor shall keep posted on the construction site, in a conspicuous place, a copy of all prevailing wage and fringe benefit rates prescribed in a contract.

# Official 2013 Prevailing Wage Rates for State Funded Projects

Issue Date: 4/11/2013

Contract must be awarded by: 7/10/2013

Page 3 of 31

Classification Name Description	Last Updated	Straight Hourly	Time and a Half	Double Time	Overtime Provision
Piledriver-four 10s allowed Monday thru Saturday; double time due when over 12 hours worked per day	CA687Z2P 10/31/2012	\$52.20	\$74.66	\$97.11	X X H X X H H D Y
<b>Apprentice Rates:</b>					
1st 6 months		\$31.99	\$44.35	\$56.69	
2nd 6 months		\$36.47	\$51.07	\$65.65	
3rd 6 months		\$40.97	\$57.82	\$74.65	
4th 6 months		\$45.46	\$64.55	\$83.63	
<b>Cement Mason</b>					
Cement Mason	BR9-14-CM 3/8/2013	\$46.93	\$62.33	\$77.72	X X H X X X H D Y
<b>Apprentice Rates:</b>					
0-749 hours		\$36.15	\$46.16	\$56.16	
750-1499 hours		\$37.69	\$48.46	\$59.24	
1500-2249 hours		\$39.23	\$50.78	\$62.32	
2250-2999 hours		\$40.77	\$53.08	\$65.40	
3000-3749 hours		\$42.31	\$55.40	\$68.48	
3750-4499 hours		\$43.85	\$57.70	\$71.56	
<b>Cement Mason</b>					
Cement Mason	CE514 11/10/2011	\$46.30	\$64.89	\$83.48	H H D H H H D N
<b>Apprentice Rates:</b>					
1st 6 months		\$26.77	\$36.07	\$45.36	
2nd 6 months		\$28.68	\$38.91	\$49.13	
3rd 6 months		\$32.50	\$44.59	\$56.66	
4th 6 months		\$36.32	\$50.26	\$64.19	
5th 6 months		\$38.24	\$53.11	\$67.98	
6th 6 months		\$42.06	\$58.79	\$75.51	
<b>Drywall</b>					
Drywall Taper	PT-22-D 7/3/2012	\$43.16	\$56.14	\$69.11	H H D H D D D D Y
Four 10s allowed Monday-Thursday					
<b>Apprentice Rates:</b>					
First 3 months		\$30.19	\$36.68	\$43.17	
Second 3 months		\$32.78	\$40.57	\$48.35	
Second 6 months		\$35.37	\$44.45	\$53.53	
Third 6 months		\$37.97	\$48.35	\$58.73	
4th 6 months		\$39.27	\$50.30	\$61.33	

Official Request #: 440

Requestor: Washtenaw Intermediate School District

Project Description: WIHI Science Lab - Remodel

Project Number:

County: Washtenaw

### Official Rate Schedule

Every contractor and subcontractor shall keep posted on the construction site, in a conspicuous place, a copy of all prevailing wage and fringe benefit rates prescribed in a contract.

# Official 2013 Prevailing Wage Rates for State Funded Projects

Issue Date: 4/11/2013

Contract must be awarded by: 7/10/2013

Page 4 of 31

Classification Name	Description	Last Updated	Straight Hourly	Time and a Half	Double Time	Overtime Provision
<b>Electrician</b>						
Road Way Electrical Work	EC-17	5/31/2012	\$49.55	\$71.93	\$94.30	H H H H H H H D Y
Double time due after 16 hours on any calendar day and all hours Sunday.						
<b>Apprentice Rates:</b>						
	1st 6 months		\$31.65	\$45.07	\$58.49	
	2nd 6 months		\$33.88	\$48.42	\$62.96	
	3rd 6 months		\$36.13	\$51.79	\$67.46	
	4th 6 months		\$38.35	\$55.13	\$71.90	
	5th 6 months		\$40.58	\$58.47	\$76.36	
	6th 6 months		\$45.06	\$65.19	\$85.32	
Inside wireman	EC-252-IW	11/16/2012	\$59.16	\$79.92	\$100.68	H H D H D D D D N
<b>Apprentice Rates:</b>						
	1st Period		\$33.71	\$41.75	\$49.78	
	2nd Period		\$38.39	\$48.77	\$59.14	
	3rd Period		\$42.54	\$54.99	\$67.44	
	4th Period		\$46.70	\$61.24	\$75.76	
	5th Period		\$50.86	\$67.47	\$84.08	
	6th Period		\$55.00	\$73.69	\$92.36	
Sound and Communications Installer/Technician	EC-252-SC	11/16/2012	\$38.74	\$52.04	\$65.33	H H D H D D D D N
<b>Apprentice Rates:</b>						
	Period 1		\$21.76	\$28.40	\$35.05	
	Period 2		\$23.09	\$30.40	\$37.71	
	Period 3		\$24.43	\$32.41	\$40.39	
	Period 4		\$25.76	\$34.41	\$43.05	
	Period 5		\$30.77	\$40.08	\$49.39	
	Period 6		\$33.43	\$44.08	\$54.72	
	Period 7		\$36.08	\$48.05	\$60.01	
	Period 8		\$37.42	\$50.06	\$62.69	

Official Request #: 440  
 Requestor: Washtenaw Intermediate School District  
 Project Description: WIHI Science Lab - Remodel  
 Project Number:  
 County: Washtenaw

### Official Rate Schedule

Every contractor and subcontractor shall keep posted on the construction site, in a conspicuous place, a copy of all prevailing wage and fringe benefit rates prescribed in a contract.

# Official 2013 Prevailing Wage Rates for State Funded Projects

Issue Date: 4/11/2013

Contract must be awarded by: 7/10/2013

Page 5 of 31

Classification Name Description	Last Updated	Straight Hourly	Time and a Half	Double Time	Overtime Provision
Lineman/Technician outside utility and commercial power and high voltage pipe type cable work and electrical underground.	EC-876 11/18/2009	\$47.05	\$68.11	\$89.17	H H H H H H D Y

Four 10s allowed Monday-Thursday with Friday makeup or Tuesday-Friday with Monday makeup.

**Apprentice Rates:**

1st period	\$30.20	\$42.69	\$55.26
2nd period	\$32.32	\$46.02	\$59.70
3rd period	\$34.42	\$49.16	\$63.90
4th period	\$36.53	\$52.33	\$68.12
5th period	\$38.63	\$55.47	\$72.32
6th period	\$40.74	\$58.64	\$76.54
7th period	\$42.84	\$61.79	\$80.74

Subdivision of county Lyndon, Manchester, Sharon, & Sylvan township

**Elevator Constructor**

Elevator Constructor Mechanic	EL-85	4/8/2013	\$70.77	\$116.32	D D D D D D D Y
-------------------------------	-------	----------	---------	----------	-----------------

**Apprentice Rates:**

1st year	\$50.27	\$75.32
2nd year	\$54.83	\$84.44
3rd year	\$57.10	\$88.98
4th year	\$61.66	\$98.10

**Glazier**

Glazier	GL-357	7/3/2012	\$46.21	\$64.51	\$82.80	H H H H H H D Y
---------	--------	----------	---------	---------	---------	-----------------

If a four 10 hour day workweek is scheduled, four 10s must be consecutive, M-F.

**Apprentice Rates:**

1st 6 months	\$31.63	\$42.64	\$53.64
2nd 6 months	\$33.09	\$44.83	\$56.56
3rd 6 months	\$36.00	\$49.19	\$62.38
4th 6 months	\$37.46	\$51.39	\$65.30
5th 6 months	\$38.92	\$53.57	\$68.22
6th 6 months	\$40.38	\$55.77	\$71.14
7th 6 months	\$41.84	\$57.95	\$74.06
8th 6 months	\$44.75	\$62.32	\$79.88

**Heat and Frost Insulator**

Spray Insulation	AS25S	3/5/2007	\$20.14	\$29.14	H H H H H H H N
------------------	-------	----------	---------	---------	-----------------

Official Request #: 440

Requestor: Washtenaw Intermediate School District

Project Description: WIHI Science Lab - Remodel

Project Number:

County: Statewide

**Official Rate Schedule**

Every contractor and subcontractor shall keep posted on the construction site, in a conspicuous place, a copy of all prevailing wage and fringe benefit rates prescribed in a contract.

# Official 2013 Prevailing Wage Rates for State Funded Projects

Issue Date: 4/11/2013

Contract must be awarded by: 7/10/2013

Page 6 of 31

Classification	Name	Description	Last Updated	Straight Hourly	Time and a Half	Double Time	Overtime Provision
----------------	------	-------------	--------------	-----------------	-----------------	-------------	--------------------

**Heat and Frost Insulator and Asbestos Worker**  
 Heat and Frost Insulators and Asbestos Workers AS25 \$53.15 \$68.54 \$83.92 H H H H H H D Y  
 Four 10s must be worked for a minimum of 2 weeks consecutively, Monday thru Thursday. All hours worked in excess of 10 will be paid at double time. All hours worked on the fifth day, Monday thru Friday will paid at time and one-half.  
 8/14/2009

**Apprentice Rates:**

1st Year	\$39.30	\$47.76	\$56.22
2nd Year	\$42.38	\$52.38	\$62.38
3rd Year	\$43.92	\$54.69	\$65.46
4th Year	\$47.00	\$59.31	\$71.62

Subdivision of county Twps of Ann Arbor, Augusta, Lodi, Northfield, Pittsfield, Salem, Saline, Scio, Superior, Webster, Ypsilanti and York

**Heat and Frost Insulator and Asbestos Worker** AS47 \$44.40 \$58.76 \$73.12 H H H H H H D Y  
 4 ten hour work days shall be either Monday thru Thursday or Tuesday thru Friday  
 3/11/2013

**Apprentice Rates:**

1st year	\$25.78	\$32.96	\$40.14
2nd year	\$29.50	\$38.11	\$46.73
3rd year	\$33.22	\$43.27	\$53.32
4th year	\$36.95	\$48.44	\$59.93
5th year	\$40.68	\$53.61	\$66.53

Subdivision of county Bridgewater, Dexter, Freedom, Lima, Lindon, Manchester, Sharon and Sylvan

**Ironworker**  
 Fence, Sound Barrier & Guardrail erection/installation and Exterior Signage work IR-25-F1 \$33.15 \$45.15 \$57.15 X X H X X X H D Y  
 Four ten hour work days may be worked during Monday-Saturday.  
 4/2/2013

**Apprentice Rates:**

60% Level	\$22.75	\$29.95	\$37.15
65% Level	\$24.05	\$31.85	\$39.65
70% Level	\$25.36	\$33.76	\$42.16
75% Level	\$26.65	\$35.65	\$44.65
80% Level	\$27.95	\$37.55	\$47.15
85% Level	\$29.25	\$39.45	\$49.65

Official Request #: 440  
 Requestor: Washtenaw Intermediate School District  
 Project Description: WIHI Science Lab - Remodel  
 Project Number:  
 County: Washtenaw

**Official Rate Schedule**

Every contractor and subcontractor shall keep posted on the construction site, in a conspicuous place, a copy of all prevailing wage and fringe benefit rates prescribed in a contract.



# Official 2013 Prevailing Wage Rates for State Funded Projects

Issue Date: 4/11/2013

Contract must be awarded by: 7/10/2013

Page 7 of 31

Classification Name      Description	Last Updated	Straight Hourly	Time and a Half	Double Time	Overtime Provision
---	-----------------	--------------------	--------------------	----------------	-----------------------

Siding, Glazing, Curtain Wall 4 tens may be worked Monday thru Thursday @ straight time. If bad weather, Friday may be a make up day. If holiday celebrated on a Monday, 4 10s may be worked Tuesday thru Friday. Work in excess of 12 hours per day must be paid @ double time.	IR-25-GZ2		\$43.36	\$55.02	\$66.68 H H H H H H D D Y
	10/10/2011				

**Apprentice Rates:**

Level 1	\$27.03	\$33.64	\$40.23
Level 2	\$29.14	\$36.38	\$43.60
Level 3	\$31.26	\$39.13	\$46.99
Level 4	\$33.38	\$41.88	\$50.37
Level 5	\$35.49	\$44.62	\$53.75
Level 6	\$37.61	\$47.37	\$57.13

Pre-engineered Metal Work	IR-25-PE-Z1		\$44.59	\$54.71	\$64.83 X X H X X X X D Y
	4/12/2012				

**Apprentice Rates:**

1st Year	\$24.56	\$30.05	\$35.53
3rd 6 month period	\$26.68	\$32.91	\$39.15
4th 6 month period	\$28.81	\$35.80	\$42.80
5th 6 month period	\$30.93	\$38.68	\$46.42
6th 6 month period	\$33.06	\$41.56	\$50.06

Subdivision of county      East of US-23 and the University of Michigan.

Pre-engineered Metal Work	IR-25-PE-Z2		\$42.37	\$51.88	\$61.39 X X H X X X X D Y
	5/9/2012				

**Apprentice Rates:**

1st Year	\$24.56	\$30.05	\$35.53
3rd 6 month period	\$26.68	\$32.91	\$39.15
4th 6 month period	\$28.81	\$35.80	\$42.80
5th 6 month period	\$30.93	\$38.68	\$46.42
6th 6 month period	\$33.06	\$41.56	\$50.06

Subdivision of county      West of US 23 excluding the Univ of Mich

Reinforced Iron Work	IR-25-RF		\$52.36	\$74.85	\$97.34 H H D H D D D D N
	10/10/2011				

**Apprentice Rates:**

Level 1	\$33.01	\$45.52	\$58.04
Level 2	\$35.38	\$50.51	\$64.68
Level 3	\$37.74	\$52.62	\$67.50
Level 4	\$40.28	\$57.86	\$74.48
Level 5	\$42.81	\$60.22	\$77.64
Level 6	\$45.35	\$64.04	\$82.72

Official Request #: 440

Requestor: Washtenaw Intermediate School District

Project Description: WIHI Science Lab - Remodel

Project Number:

County: Washtenaw

### Official Rate Schedule

Every contractor and subcontractor shall keep posted on the construction site, in a conspicuous place, a copy of all prevailing wage and fringe benefit rates prescribed in a contract.

# Official 2013 Prevailing Wage Rates for State Funded Projects

Issue Date: 4/11/2013

Contract must be awarded by: 7/10/2013

Page 8 of 31

Classification Name      Description	Last Updated	Straight Hourly	Time and a Half	Double Time	Overtime Provision
Rigging Work	IR-25-RIG	\$57.73	\$86.41	\$115.08	H H H H H H D N
	10/10/2011				
	<b>Apprentice Rates:</b>				
	Level 1 & 2	\$33.28	\$49.67	\$66.05	
	Level 3	\$36.11	\$53.92	\$71.71	
	Level 4	\$38.93	\$58.14	\$77.35	
	Level 5	\$41.76	\$62.39	\$83.01	
	Level 6	\$44.59	\$66.63	\$88.67	
Decking	IR-25-SD	\$49.44	\$73.91	\$98.37	H H H H H H D D Y
4 tens may be worked Monday thru Thursday @ straight time. If bad weather, Friday may be a make up day. If holiday celebrated on a Monday, 4 10s may be worked Tuesday thru Friday. Work in excess of 12 hours per day must be paid @ double time.					
	10/10/2011				
Structural, ornamental, conveyor, welder and pre-cast	IR-25-STR	\$58.11	\$86.91	\$115.71	H H H H H H D D Y
4 tens may be worked Monday thru Thursday @ straight time. If bad weather, Friday may be a make up day. If holiday celebrated on a Monday, 4 10s may be worked Tuesday thru Friday. Work in excess of 12 hours per day must be paid @ double time.					
	10/10/2011				
	<b>Apprentice Rates:</b>				
	Levels 1 & 2	\$32.77	\$49.15	\$65.54	
	Level 3	\$35.60	\$53.40	\$71.20	
	Level 4	\$38.42	\$57.63	\$76.84	
	Level 5	\$41.25	\$61.88	\$82.50	
	Level 6	\$44.08	\$66.13	\$88.16	
	Level 7	\$46.90	\$70.35	\$93.80	
	Level 8	\$49.73	\$74.60	\$99.46	
Industrial Door erection & construction	IR-25-STR-D	\$58.17	\$72.60	\$87.02	H H D H H H D D Y
	10/10/2011				

Official Request #: 440  
 Requestor: Washtenaw Intermediate School District  
 Project Description: WIHI Science Lab - Remodel  
 Project Number:  
 County: Washtenaw

### Official Rate Schedule

Every contractor and subcontractor shall keep posted on the construction site, in a conspicuous place, a copy of all prevailing wage and fringe benefit rates prescribed in a contract.

# Official 2013 Prevailing Wage Rates for State Funded Projects

Issue Date: 4/11/2013

Contract must be awarded by: 7/10/2013

Page 9 of 31

Classification	Last	Straight	Time and	Double	Overtime
Name Description	Updated	Hourly	a Half	Time	Provision

**Laborer**

Laborer, demolition, drywall handlers, general jobsite cleanup	L499-A-A	3/1/2013	\$40.45	\$54.05	\$67.64 X X H H H H H D Y
--	----------	----------	---------	---------	---------------------------

A 4 10 schedule allowed if four consecutive days between Monday and Friday.

**Apprentice Rates:**

0-1,000 hours	\$34.60	\$45.27	\$55.94
1,001-2,000 hours	\$35.77	\$47.02	\$58.28
2,001-3,000 hours	\$36.94	\$48.78	\$60.62
3,001-4,000 hours	\$39.28	\$52.29	\$65.30

Mortar mixer, material mixer, air, gas or electric tool operator, power buggy operator, stone setter, tender, scaffold builder or dismantler, winlass operator, tar & kettle operator.	L499-A-B	3/1/2013	\$40.65	\$54.35	\$68.04 X X H H H H H D Y
--	----------	----------	---------	---------	---------------------------

A 4 10 schedule allowed if four consecutive days between Monday and Friday.

**Apprentice Rates:**

0-1,000 hours	\$34.75	\$45.50	\$56.24
1,001-2,000 hours	\$35.93	\$47.26	\$58.60
2,001-3,000 hours	\$37.11	\$49.04	\$60.96
3,001-4,000 hours	\$39.47	\$52.58	\$65.68

Jack hammering and chipping on concrete Laborer, demolition, drywall handlers, general jobsite cleanup	L499-A-B2	3/1/2013	\$40.95	\$54.80	\$68.64 X X H H H H H D Y
---	-----------	----------	---------	---------	---------------------------

A 4 10 schedule allowed if four consecutive days between Monday and Friday.

**Apprentice Rates:**

0-1,000 hours	\$34.98	\$45.84	\$56.70
1,001-2,000 hours	\$36.17	\$47.62	\$59.08
2,001-3,000 hours	\$37.37	\$49.42	\$61.48
3,001-4,000 hours	\$39.76	\$53.01	\$66.26

Official Request #: 440

Requestor: Washtenaw Intermediate School District

Project Description: WIHI Science Lab - Remodel

Project Number:

County: Washtenaw

**Official Rate Schedule**

Every contractor and subcontractor shall keep posted on the construction site, in a conspicuous place, a copy of all prevailing wage and fringe benefit rates prescribed in a contract.

# Official 2013 Prevailing Wage Rates for State Funded Projects

Issue Date: 4/11/2013

Contract must be awarded by: 7/10/2013

Page 10 of 31

Classification Name Description	Last Updated	Straight Hourly	Time and a Half	Double Time	Overtime Provision
Crock or pipe laborer, caisson worker A 4 10 schedule allowed if four consecutive days between Monday and Friday.	L499-A-C 3/1/2013	\$40.77	\$54.53	\$68.28	X X H H H H H D Y

**Apprentice Rates:**

0-1,000 hours	\$34.84	\$45.63	\$56.42
1,001-2,000 hours	\$36.03	\$47.42	\$58.80
2,001-3,000 hours	\$37.21	\$49.18	\$61.16
3,001-4,000 hours	\$39.58	\$52.74	\$65.90

Watchmen, Civil Engineer Helpers, or Rodmen A 4 10 schedule allowed if four consecutive days between Monday and Friday.	L499-A-D 3/1/2013	\$39.66	\$52.86	\$66.06	X X H H H H H D Y
---	----------------------	---------	---------	---------	-------------------

**Apprentice Rates:**

0-1,000 hours	\$34.01	\$44.38	\$54.76
1,001-2,000 hours	\$35.14	\$46.08	\$57.02
2,001-3,000 hours	\$36.27	\$47.78	\$59.28
3,001-4,000 hours	\$38.53	\$51.16	\$63.80

Final cleaning: washing or cleaning of walls, partitions, ceilings, windows, bathrooms, kitchens, laboratories and all fixtures and facilities therein. Clean-up mopping, washing, waxing and polishing or dusting of all floors or areas.	L499-A-E 3/27/2013	\$37.45	\$49.55	\$61.64	X X H H H H H D Y
---	-----------------------	---------	---------	---------	-------------------

A 4 10 schedule allowed if four consecutive days between  
Monday and Friday.

Plasterer Tender, Plastering Machine Operator	LPT-2 6/8/2012	\$43.12	\$61.27	\$79.42	H H H H H H H D Y
---	-------------------	---------	---------	---------	-------------------

If conditions beyond the employer/employee's control  
prevent one or more hours of working during Mon-Fri, the  
employer may choose to work up to 10 hour straight time  
weekdays. Work may be scheduled up to 10 hours per Mon-  
Fri for the purpose of reaching 40 hours @ straight time.  
Make up days may also include 8 hours of work on  
Saturdays @ straight time.

**Apprentice Rates:**

0 - 1,000 hours	\$37.17	\$52.35	\$67.52
1,001 - 2,000 hours	\$38.36	\$54.14	\$69.90
2,001 - 3,000 hours	\$39.55	\$55.92	\$72.28
3,001 - 4,000 hours	\$41.93	\$59.49	\$77.04

Official Request #: 440  
Requestor: Washtenaw Intermediate School District  
Project Description: WIHI Science Lab - Remodel  
  
Project Number:  
County: Washtenaw

### Official Rate Schedule

Every contractor and subcontractor shall keep posted  
on the construction site, in a conspicuous place, a copy  
of all prevailing wage and fringe benefit rates  
prescribed in a contract.

# Official 2013 Prevailing Wage Rates for State Funded Projects

Issue Date: 4/11/2013

Contract must be awarded by: 7/10/2013

Page 11 of 31

Classification	Name	Description	Last Updated	Straight Hourly	Time and a Half	Double Time	Overtime Provision
<b>Laborer - Hazardous</b>							
	Class A	performing work in conjunction with site preparation and other preliminary work prior to actual removal, handling, or containment of hazardous waste substances not requiring use of personal protective equipment required by state or federal regulations; or a laborer performing work in conjunction with the removal, handling, or containment of hazardous waste substances when use of personal protective equipment level "D" is required.	LHAZ-Z3-A 3/6/2013	\$40.45	\$57.74	\$75.02	H H H H H H D Y

**Apprentice Rates:**

0-1,000 work hours	\$34.60	\$48.96	\$63.32
1,001-2,000 work hours	\$35.77	\$50.71	\$65.66
2,001-3,000 work hours	\$36.94	\$52.47	\$68.00
3,001-4,000 work hours	\$39.28	\$55.98	\$72.68

	Class B	performing work in conjunction with the removal, handling, or containment of hazardous waste substances when the use of personal protective equipment levels "A", "B" or "C" is required.	LHAZ-Z3-B 3/6/2013	\$41.45	\$59.24	\$77.02	H H H H H H D Y
--	---------	---	-----------------------	---------	---------	---------	-----------------

**Apprentice Rates:**

0-1,000 work hours	\$35.35	\$50.09	\$64.82
1,001-2,000 work hours	\$36.57	\$51.91	\$67.26
2,001-3,000 work hours	\$37.79	\$53.75	\$69.70
3,001-4,000 work hours	\$40.23	\$57.41	\$74.58

**Laborer Underground - Tunnel, Shaft & Caisson**

	Class I	Tunnel, shaft and caisson laborer, dump man, shanty man, hog house tender, testing man (on gas), and watchman.	LAUCT-Z2-1 1/16/2013	\$34.72	\$45.94	\$57.15	H H H H H H D Y
--	---------	--	-------------------------	---------	---------	---------	-----------------

**Apprentice Rates:**

0-1,000 work hours	\$29.61	\$38.27	\$46.93
1,001-2,000 work hours	\$30.63	\$39.80	\$48.97
2,001-3,000 work hours	\$31.66	\$41.35	\$51.03
3,001-4,000 work hours	\$33.70	\$44.41	\$55.11

Official Request #: 440

Requestor: Washtenaw Intermediate School District

Project Description: WIHI Science Lab - Remodel

Project Number:

County: Washtenaw

**Official Rate Schedule**

Every contractor and subcontractor shall keep posted on the construction site, in a conspicuous place, a copy of all prevailing wage and fringe benefit rates prescribed in a contract.

# Official 2013 Prevailing Wage Rates for State Funded Projects

Issue Date: 4/11/2013

Contract must be awarded by: 7/10/2013

Page 12 of 31

Classification Name Description	Last Updated	Straight Hourly	Time and a Half	Double Time	Overtime Provision
Class II - Manhole, headwall, catch basin builder, bricklayer LAUCT-Z2-2 tender, mortar man, material mixer, fence erector, and guard rail builder	1/16/2013	\$34.81	\$46.07	\$57.33	H H H H H H H D Y

**Apprentice Rates:**

0-1,000 work hours	\$29.68	\$38.37	\$47.07
1,001-2,000 work hours	\$30.71	\$39.92	\$49.13
2,001-3,000 work hours	\$31.73	\$41.45	\$51.17
3,001-4,000 work hours	\$33.78	\$44.53	\$55.27

Class III - Air tool operator (jack hammer man, bush hammer man and grinding man), first bottom man, second bottom man, cage tender, car pusher, carrier man, concrete man, concrete form man, concrete repair man, cement invert laborer, cement finisher, concrete shoveler, conveyor man, floor man, gasoline and electric tool operator, gunnite man, grout operator, welder, heading dinky man, inside lock tender, pea gravel operator, pump man, outside lock tender, scaffold man, top signal man, switch man, track man, tugger man, utility man, vibrator man, winch operator, pipe jacking man, wagon drill and air track operator and concrete saw operator (under 40 h.p.).	LAUCT-Z2-3 1/16/2013	\$34.91	\$46.22	\$57.53	H H H H H H H D Y
---	-------------------------	---------	---------	---------	-------------------

**Apprentice Rates:**

0-1,000 work hours	\$29.75	\$38.48	\$47.21
1,001-2,000 work hours	\$30.79	\$40.04	\$49.29
2,001-3,000 work hours	\$31.82	\$41.59	\$51.35
3,001-4,000 work hours	\$33.88	\$44.67	\$55.47

Class IV - Tunnel, shaft and caisson mucker, bracer man, LAUCT-Z2-4 liner plate man, long haul dinky driver and well point man.	1/16/2013	\$35.07	\$46.46	\$57.85	H H H H H H H D Y
--	-----------	---------	---------	---------	-------------------

**Apprentice Rates:**

0-1,000 work hours	\$29.87	\$38.66	\$47.45
1,001-2,000 work hours	\$30.91	\$40.22	\$49.53
2,001-3,000 work hours	\$31.95	\$41.78	\$51.61
3,001-4,000 work hours	\$34.03	\$44.90	\$55.77

Class V - Tunnel, shaft and caisson miner, drill runner, LAUCT-Z2-5 keyboard operator, power knife operator, reinforced steel or mesh man (e.g. wire mesh, steel mats, dowel bars)	1/16/2013	\$35.33	\$46.85	\$58.37	H H H H H H H D Y
--	-----------	---------	---------	---------	-------------------

**Apprentice Rates:**

0-1,000 work hours	\$30.07	\$38.96	\$47.85
1,001-2,000 work hours	\$31.12	\$40.53	\$49.95
2,001-3,000 work hours	\$32.17	\$42.11	\$52.05
3,001-4,000 work hours	\$34.28	\$45.27	\$56.27

Official Request #: 440

Requestor: Washtenaw Intermediate School District

Project Description: WIHI Science Lab - Remodel

Project Number:

County: Washtenaw

### Official Rate Schedule

Every contractor and subcontractor shall keep posted on the construction site, in a conspicuous place, a copy of all prevailing wage and fringe benefit rates prescribed in a contract.

# Official 2013 Prevailing Wage Rates for State Funded Projects

Issue Date: 4/11/2013

Contract must be awarded by: 7/10/2013

Page 13 of 31

Classification Name	Description	Last Updated	Straight Hourly	Time and a Half	Double Time	Overtime Provision
Class VI - Dynamite man and powder man.	LAUCT-Z2-6	1/16/2013	\$35.64	\$47.32	\$58.99	H H H H H H H D Y
	<b>Apprentice Rates:</b>					
	0-1,000 work hours		\$30.30	\$39.31	\$48.31	
	1,001-2,000 work hours		\$31.37	\$40.91	\$50.45	
	2,001-3,000 work hours		\$32.44	\$42.51	\$52.59	
	3,001-4,000 work hours		\$34.57	\$45.71	\$56.85	
Class VII - Restoration laborer, seeding, sodding, planting, cutting, mulching and topsoil grading and the restoration of property such as replacing mail boxes, wood chips, planter boxes and flagstones.	LAUCT-Z2-7	1/16/2013	\$27.91	\$35.72	\$43.53	H H H H H H H D Y
	<b>Apprentice Rates:</b>					
	0-1,000 work hours		\$24.51	\$30.62	\$36.73	
	1,001-2,000 work hours		\$25.19	\$31.64	\$38.09	
	2,001-3,000 work hours		\$25.87	\$32.66	\$39.45	
	3,001-4,000 work hours		\$27.23	\$34.70	\$42.17	
<b>Landscape Laborer</b>						
Landscape Specialist includes air, gas, and diesel equipment operator, skidsteer (or equivalent), lawn sprinkler installer on landscaping work where seeding, sodding, planting, cutting, trimming, backfilling, rough grading or maintenance of landscape projects occurs.	LLAN-Z1-A	10/23/2012	\$27.48	\$37.96	\$48.44	X X H X X X H D Y
Sundays paid at time & one half. Holidays paid at double time.						
Skilled Landscape Laborer: small power tool operator, lawn sprinkler installers' tender, material mover, truck driver when seeding, sodding, planting, cutting, trimming, backfilling, rough grading or maintaining of landscape projects occurs	LLAN-Z1-B	10/23/2012	\$23.26	\$31.63	\$40.00	X X H X X X H D Y
Sundays paid at time & one half. Holidays paid at double time.						
Seeding, sodding, planting, cutting, trimming, backfilling, rough grading or maintaining of landscape projects.	LLAN-Z1-C	10/23/2012	\$14.60	\$21.90	\$29.20	X X H X X X H D Y
Sundays paid at time & one half. Holidays paid at double time						

Official Request #: 440  
 Requestor: Washtenaw Intermediate School District  
 Project Description: WIHI Science Lab - Remodel  
 Project Number:  
 County: Washtenaw

**Official Rate Schedule**

Every contractor and subcontractor shall keep posted on the construction site, in a conspicuous place, a copy of all prevailing wage and fringe benefit rates prescribed in a contract.

# Official 2013 Prevailing Wage Rates for State Funded Projects

Issue Date: 4/11/2013

Contract must be awarded by: 7/10/2013

Page 14 of 31

Classification Name      Description	Last Updated	Straight Hourly	Time and a Half	Double Time	Overtime Provision
---	-----------------	--------------------	--------------------	----------------	-----------------------

**Marble Finisher**

Marble Finisher	BR1-MF		\$42.41	\$53.10	\$63.79 H H D H D D D D Y
A 4 ten workweek may be worked Monday thru Thursday or Tuesday thru Friday.		11/16/2012			

**Apprentice Rates:**

Level 1		\$18.57	\$24.54	\$30.52
Level 2		\$19.74	\$26.30	\$32.86
Level 3		\$26.34	\$33.11	\$39.87
Level 4		\$27.77	\$35.25	\$42.73
Level 5		\$29.25	\$36.95	\$44.65
Level 6		\$30.83	\$38.92	\$47.02
Level 7		\$32.48	\$40.65	\$48.82
Level 8		\$33.93	\$42.50	\$51.08

**Marble Mason**

Marble Mason	BR1-MM		\$49.05	\$63.06	\$77.07 H H D H D D D D Y
A 4 ten workweek may be worked Monday thru Thursday or Tuesday thru Friday.		11/16/2012			

**Apprentice Rates:**

Level 1		\$24.52	\$31.83	\$39.13
Level 2		\$27.50	\$35.59	\$43.67
Level 3		\$32.59	\$40.95	\$49.31
Level 4		\$35.26	\$44.56	\$53.86
Level 5		\$37.47	\$47.04	\$56.61
Level 6		\$41.04	\$52.32	\$63.60
Level 7		\$41.69	\$53.15	\$64.61
Level 8		\$42.60	\$54.51	\$66.43

**Operating Engineer**

Crane with boom & jib or leads 120' or longer	EN-324-A120		\$54.91	\$72.15	\$89.38 H H D H D D D D Y
		6/18/2012			

Four ten hour days may be scheduled Monday-Thursday. Work in excess of 10 hours but less than 12 per day shall be paid at time and one-half. Work in excess of 12 per day shall be paid at double time. When bad weather or holiday occurs during this time, Friday may be scheduled for a minimum of 8 hours.

Official Request #: 440

Requestor: Washtenaw Intermediate School District

Project Description: WIHI Science Lab - Remodel

Project Number:

County: Washtenaw

**Official Rate Schedule**

Every contractor and subcontractor shall keep posted on the construction site, in a conspicuous place, a copy of all prevailing wage and fringe benefit rates prescribed in a contract.



# Official 2013 Prevailing Wage Rates for State Funded Projects

Issue Date: 4/11/2013

Contract must be awarded by: 7/10/2013

Page 15 of 31

Classification Name Description	Last Updated	Straight Hourly	Time and a Half	Double Time	Overtime Provision
Crane with boom & jib or leads 140' or longer EN-324-A140 Four ten hour days may be scheduled Monday-Thursday. Work in excess of 10 hours but less than 12 per day shall be paid at time and one-half. Work in excess of 12 per day shall be paid at double time. When bad weather or holiday occurs during this time, Friday may be scheduled for a minimum of 8 hours.	6/18/2012	\$55.73	\$73.38	\$91.02	H H D H D D D D Y
Crane with boom & jib or leads 220' or longer EN-324-A220 Four ten hour days may be scheduled Monday-Thursday. Work in excess of 10 hours but less than 12 per day shall be paid at time and one-half. Work in excess of 12 per day shall be paid at double time. When bad weather or holiday occurs during this time, Friday may be scheduled for a minimum of 8 hours.	6/18/2012	\$56.03	\$73.83	\$91.62	H H D H D D D D Y
Crane with boom & jib or leads 300' or longer EN-324-A300 Four ten hour days may be scheduled Monday-Thursday. Work in excess of 10 hours but less than 12 per day shall be paid at time and one-half. Work in excess of 12 per day shall be paid at double time. When bad weather or holiday occurs during this time, Friday may be scheduled for a minimum of 8 hours.	6/18/2012	\$57.53	\$76.08	\$94.62	H H D H D D D D Y
Crane with boom & jib or leads 400' or longer EN-324-A400 Four ten hour days may be scheduled Monday-Thursday. Work in excess of 10 hours but less than 12 per day shall be paid at time and one-half. Work in excess of 12 per day shall be paid at double time. When bad weather or holiday occurs during this time, Friday may be scheduled for a minimum of 8 hours.	6/18/2012	\$59.03	\$78.33	\$97.62	H H D H D D D D Y
Compressor or welding machine EN-324-CW Four ten hour days may be scheduled Monday-Thursday. Work in excess of 10 hours but less than 12 per day shall be paid at time and one-half. Work in excess of 12 per day shall be paid at double time. When bad weather or holiday occurs during this time, Friday may be scheduled for a minimum of 8 hours.	6/18/2012	\$44.06	\$55.87	\$67.68	H H D H D D D D Y

Official Request #: 440

Requestor: Washtenaw Intermediate School District

Project Description: WIHI Science Lab - Remodel

Project Number:

County: Washtenaw

### Official Rate Schedule

Every contractor and subcontractor shall keep posted on the construction site, in a conspicuous place, a copy of all prevailing wage and fringe benefit rates prescribed in a contract.

# Official 2013 Prevailing Wage Rates for State Funded Projects

Issue Date: 4/11/2013

Contract must be awarded by: 7/10/2013

Page 16 of 31

Classification Name Description	Last Updated	Straight Hourly	Time and a Half	Double Time	Overtime Provision
Forklift, lull, extend-a-boom forklift  Four ten hour days may be scheduled Monday-Thursday. Work in excess of 10 hours but less than 12 per day shall be paid at time and one-half. Work in excess of 12 per day shall be paid at double time. When bad weather or holiday occurs during this time, Friday may be scheduled for a minimum of 8 hours.	EN-324-FL  6/18/2012	\$51.37	\$66.84	\$82.30	H H D H D D D D Y
Fireman or oiler  Four ten hour days may be scheduled Monday-Thursday. Work in excess of 10 hours but less than 12 per day shall be paid at time and one-half. Work in excess of 12 per day shall be paid at double time. When bad weather or holiday occurs during this time, Friday may be scheduled for a minimum of 8 hours.	EN-324-FO  6/18/2012	\$43.03	\$54.33	\$65.62	H H D H D D D D Y
Regular crane, job mechanic, concrete pump with boom  Four ten hour days may be scheduled Monday-Thursday. Work in excess of 10 hours but less than 12 per day shall be paid at time and one-half. Work in excess of 12 per day shall be paid at double time. When bad weather or holiday occurs during this time, Friday may be scheduled for a minimum of 8 hours.	EN-324-RC  6/18/2012	\$54.05	\$70.86	\$87.66	H H D H D D D D Y
Regular engineer, hydro-excavator, remote controlled concrete breaker  Four ten hour days may be scheduled Monday-Thursday. Work in excess of 10 hours but less than 12 per day shall be paid at time and one-half. Work in excess of 12 per day shall be paid at double time. When bad weather or holiday occurs during this time, Friday may be scheduled for a minimum of 8 hours.	EN-324-RE  6/18/2012	\$53.08	\$69.40	\$85.72	H H D H D D D D Y

**Apprentice Rates:**

0-999 hours	\$42.69	\$54.11	\$65.54
1,000-1,999 hours	\$44.31	\$56.55	\$68.78
2,000-2,999 hours	\$45.95	\$59.01	\$72.06
3,000-3,999 hours	\$47.58	\$61.45	\$75.32
4,000-4,999 hours	\$49.21	\$63.90	\$78.58
5,000-5,999 hours	\$50.84	\$66.34	\$81.84

Official Request #: 440

Requestor: Washtenaw Intermediate School District

Project Description: WIHI Science Lab - Remodel

Project Number:

County: Washtenaw

**Official Rate Schedule**

Every contractor and subcontractor shall keep posted on the construction site, in a conspicuous place, a copy of all prevailing wage and fringe benefit rates prescribed in a contract.

# Official 2013 Prevailing Wage Rates for State Funded Projects

Issue Date: 4/11/2013

Contract must be awarded by: 7/10/2013

Page 17 of 31

Classification Name Description	Last Updated	Straight Hourly	Time and a Half	Double Time	Overtime Provision
------------------------------------	-----------------	--------------------	--------------------	----------------	-----------------------

**Operating Engineer - Marine Construction**  
 Diver/Wet Tender, Engineer (hydraulic dredge)      GLF-1      3/1/2013      \$63.00      \$82.35      \$101.70      X X H H H H H D Y

Holiday pay= \$121.05 per hour, wages & fringes

Subdivision of county      all Great Lakes, islands therein, & connecting & tributary waters

Crane/Backhoe Operator, 70 ton or over Tug Operator,      GLF-2      3/1/2013      \$61.50      \$80.10      \$98.70      X X H H H H H D Y  
 Mechanic/Welder, Assistant Engineer (hydraulic dredge),  
 Leverman (hydraulic dredge), Diver Tender

Holiday pay = \$117.30 per hour, wages & fringes

Subdivision of county      All Great Lakes, islands therein, & connecting & tributary waters

Friction, Lattice Boom or Crane License Certification      GLF-2B      3/1/2013      \$62.50      \$81.60      \$100.70      X X H H H H H D Y

Holiday pay = \$119.80

Subdivision of county      All Great Lakes, islands, therein, & connecting & tributary waters

Deck Equipment Operator, Machineryman, Maintenance of      GLF-3      3/1/2013      \$57.40      \$73.95      \$90.50      X X H H H H H D Y  
 Crane (over 50 ton capacity) or Backhoe (115,000 lbs or  
 more), Tug/Launch Operator, Loader, Dozer on Barge,  
 Deck Machinery

Holiday pay = \$107.05 per hour, wages & fringes

Subdivision of county      All Great Lakes, islands therein, & connecting & tributary waters

Deck Equipment Operator, (Machineryman/Fireman), (4      GLF-4      3/1/2013      \$51.85      \$65.63      \$79.40      X X H H H H H D Y  
 equipment units or more), Off Road Trucks, Deck Hand, Tug  
 Engineer, & Crane Maintenance 50 ton capacity and under  
 or Backhoe 115,000 lbs or less, Assistant Tug Operator

Holiday pay = \$93.17 per hour, wages & fringes

Subdivision of county      All Great Lakes, islands therein, & connecting & tributary waters

Official Request #: 440  
 Requestor: Washtenaw Intermediate School District  
 Project Description: WIHI Science Lab - Remodel  
 Project Number:  
 County: Statewide

**Official Rate Schedule**  
 Every contractor and subcontractor shall keep posted  
 on the construction site, in a conspicuous place, a copy  
 of all prevailing wage and fringe benefit rates  
 prescribed in a contract.

# Official 2013 Prevailing Wage Rates for State Funded Projects

Issue Date: 4/11/2013

Contract must be awarded by: 7/10/2013

Page 18 of 31

Classification Name	Description	Last Updated	Straight Hourly	Time and a Half	Double Time	Overtime Provision
------------------------	-------------	-----------------	--------------------	--------------------	----------------	-----------------------

**Operating Engineer Hazardous Waste Class I**

Level A - Fully encapsulating chemical resistant suit w/ pressure demand, full face piece SCBA or pressure demand supplied air respirator w/ escape SCBA. The highest available level of respiratory, skin and eye protection.	EN-324-HWCI-Z1A 1/20/2012	\$51.84	\$67.86	\$83.87	H H H H H H H D Y
--	------------------------------	---------	---------	---------	-------------------

Four 10 hour days may be worked Monday-Thursday with Friday as a straight-time make up day.

**Apprentice Rates:**

1st 6 months	\$41.63	\$52.85	\$64.05
2nd 6 months	\$43.23	\$55.25	\$67.25
3rd 6 months	\$44.83	\$57.64	\$70.45
4th 6 months	\$46.43	\$60.04	\$73.65
5th 6 months	\$48.03	\$62.44	\$76.85
6th 6 months	\$49.64	\$64.86	\$80.07

Level B & C protection. B - Pressure demand, full face SCBA or pressure demand supplied air respirator w/ escape SCBA w/chemical resistant clothing. C - Full face piece, air purifying canister-equipped respirator w/chemical resistant clothing.	EN-324-HWCI-Z1B 1/20/2012	\$50.89	\$66.43	\$81.97	H H H H H H H D Y
---	------------------------------	---------	---------	---------	-------------------

Four 10 hour days may be worked Monday-Thursday with Friday as a straight-time make up day.

**Apprentice Rates:**

1st 6 months	\$40.97	\$51.85	\$62.73
2nd 6 months	\$42.52	\$54.17	\$65.83
3rd 6 months	\$44.07	\$56.50	\$68.93
4th 6 months	\$45.64	\$58.86	\$72.07
5th 6 months	\$47.19	\$61.19	\$75.17
6th 6 months	\$48.74	\$63.51	\$78.27

Level D - Coveralls, safety boots, glasses or chemical splash goggles and hard hats.	EN-324-HWCI-Z1D 1/20/2012	\$49.59	\$64.48	\$79.37	H H H H H H H D Y
--	------------------------------	---------	---------	---------	-------------------

Four 10 hour days may be worked Monday-Thursday with Friday as a straight-time make up day.

**Apprentice Rates:**

1st 6 months	\$40.06	\$50.49	\$60.91
2nd 6 months	\$41.54	\$52.71	\$63.87
3rd 6 months	\$43.04	\$54.96	\$66.87
4th 6 months	\$44.53	\$57.19	\$69.85
5th 6 months	\$46.02	\$59.42	\$72.83
6th 6 months	\$47.50	\$61.65	\$75.79

Official Request #: 440

Requestor: Washtenaw Intermediate School District  
Project Description: WIHI Science Lab - Remodel

Project Number:  
County: Washtenaw

**Official Rate Schedule**

Every contractor and subcontractor shall keep posted on the construction site, in a conspicuous place, a copy of all prevailing wage and fringe benefit rates prescribed in a contract.

# Official 2013 Prevailing Wage Rates for State Funded Projects

Issue Date: 4/11/2013

Contract must be awarded by: 7/10/2013

Page 19 of 31

Classification Name      Description	Last Updated	Straight Hourly	Time and a Half	Double Time	Overtime Provision
---	-----------------	--------------------	--------------------	----------------	-----------------------

Level D When Capping Landfill Coveralls, safety boots, glasses or chemical splash goggles and hard hats.	EN-324-HWCII-Z1DCL 1/20/2012	\$49.34	\$64.11	\$78.87	H H H H H H H D Y
--	---------------------------------	---------	---------	---------	-------------------

Four 10 hour days may be worked Monday-Thursday with Friday as a straight-time make up day.

**Apprentice Rates:**

1st 6 months	\$39.89	\$50.23	\$60.57
2nd 6 months	\$41.36	\$52.44	\$63.51
3rd 6 months	\$42.83	\$54.64	\$66.45
4th 6 months	\$44.31	\$56.86	\$69.41
5th 6 months	\$45.79	\$59.08	\$72.37
6th 6 months	\$47.27	\$61.30	\$75.33

**Operating Engineer Hazardous Waste Class II**

Level A - Fully encapsulating chemical resistant suit w/ pressure demand, full face piece SCBA or pressure demand supplied air respirator w/ escape SCBA. The highest available level of respiratory, skin and eye protection.	EN-324-HWCII-Z1A 1/20/2012	\$47.61	\$61.51	\$75.41	H H H H H H H D Y
--	-------------------------------	---------	---------	---------	-------------------

Four 10 hour days may be worked Monday-Thursday with Friday as a straight-time make up day.

Level B & C protection. B - Pressure demand, full face SCBA or pressure demand supplied air respirator w/ escape SCBA w/chemical resistant clothing. C - Full face piece, air purifying canister-equipped respirator w/chemical resistant clothing.	EN-324-HWCII-Z1B 1/20/2012	\$46.66	\$60.09	\$73.51	H H H H H H H D Y
---	-------------------------------	---------	---------	---------	-------------------

Four 10 hour days may be worked Monday-Thursday with Friday as a straight-time make up day.

Level D - Coveralls, safety boots, glasses or chemical splash goggles and hard hats.	EN-324-HWCII-Z1D 1/20/2012	\$45.36	\$58.14	\$70.91	H H H H H H H D Y
--	-------------------------------	---------	---------	---------	-------------------

Four 10 hour days may be worked Monday-Thursday with Friday as a straight-time make up day.

Level D When Capping Landfill Coveralls, safety boots, glasses or chemical splash goggles and hard hats.	EN-324-HWCII-Z1DCL 1/20/2012	\$45.11	\$57.76	\$70.41	H H H H H H H D Y
--	---------------------------------	---------	---------	---------	-------------------

Four 10 hour days may be worked Monday-Thursday with Friday as a straight-time make up day.

Official Request #: 440

Requestor: Washtenaw Intermediate School District  
Project Description: WIHI Science Lab - Remodel

Project Number:  
County: Washtenaw

**Official Rate Schedule**

Every contractor and subcontractor shall keep posted on the construction site, in a conspicuous place, a copy of all prevailing wage and fringe benefit rates prescribed in a contract.

# Official 2013 Prevailing Wage Rates for State Funded Projects

Issue Date: 4/11/2013

Contract must be awarded by: 7/10/2013

Page 20 of 31

Classification	Last Updated	Straight Hourly	Time and a Half	Double Time	Overtime Provision
Name Description					

**Operating Engineer Hazardous Waste Crane w/ Boom & Jib leads  
140' or longer**

Level A - Fully encapsulating chemical resistant suit w/ pressure demand, full face piece SCBA or pressure demand supplied air respirator w/ escape SCBA. The highest available level of respiratory, skin and eye protection.	EN-324-HW140-Z1A 1/20/2012	\$54.49	\$71.83	\$89.17	H H H H H H H D Y
--	-------------------------------	---------	---------	---------	-------------------

Four 10 hour days may be worked Monday-Thursday with Friday as a straight-time make up day.

Level B & C protection. B - Pressure demand, full face SCBA or pressure demand supplied air respirator w/ escape SCBA w/chemical resistant clothing. C - Full face piece, air purifying canister-equipped respirator w/chemical resistant clothing.	EN-324-HW140-Z1B 1/20/2012	\$53.54	\$70.41	\$87.27	H H H H H H H D Y
---	-------------------------------	---------	---------	---------	-------------------

Four 10 hour days may be worked Monday-Thursday with Friday as a straight-time make up day.

Level D Coveralls, safety boots, glasses or chemical splash goggles and hard hats.	EN-324-HW140-Z1D 1/20/2012	\$52.24	\$68.46	\$84.67	H H H H H H H D Y
--	-------------------------------	---------	---------	---------	-------------------

Four 10 hour days may be worked Monday-Thursday with Friday as a straight-time make up day.

Level D When Capping Landfill Coveralls, safety boots, glasses or chemical splash goggles and hard hats.	EN-324-HW140-Z1DCL 1/20/2012	\$51.99	\$68.08	\$84.17	H H H H H H H D Y
--	---------------------------------	---------	---------	---------	-------------------

Four 10 hour days may be worked Monday-Thursday with Friday as a straight-time make up day.

**Operating Engineer Hazardous Waste Crane w/ Boom & Jib leads  
220' or longer**

Level A - Fully encapsulating chemical resistant suit w/ pressure demand, full face piece SCBA or pressure demand supplied air respirator w/ escape SCBA. The highest available level of respiratory, skin and eye protection.	EN-324-HW220-Z1A 1/20/2012	\$54.79	\$72.28	\$89.77	H H H H H H H D Y
--	-------------------------------	---------	---------	---------	-------------------

Four 10 hour days may be worked Monday-Thursday with Friday as a straight-time make up day.

Official Request #: 440  
 Requestor: Washtenaw Intermediate School District  
 Project Description: WIHI Science Lab - Remodel  
 Project Number:  
 County: Washtenaw

**Official Rate Schedule**

Every contractor and subcontractor shall keep posted on the construction site, in a conspicuous place, a copy of all prevailing wage and fringe benefit rates prescribed in a contract.

# Official 2013 Prevailing Wage Rates for State Funded Projects

Issue Date: 4/11/2013

Contract must be awarded by: 7/10/2013

Page 21 of 31

Classification Name Description	Last Updated	Straight Hourly	Time and a Half	Double Time	Overtime Provision
Level B & C protection. B - Pressure demand, full face SCBAEN-324-HW220-Z1B or pressure demand supplied air respirator w/ escape SCBA w/chemical resistant clothing. C - Full face piece, air purifying canister-equipped respirator w/chemical resistant clothing.	1/20/2012	\$53.84	\$70.86	\$87.87	H H H H H H H D Y

Four 10 hour days may be worked Monday-Thursday with Friday as a straight-time make up day.

Level D Coveralls, safety boots, glasses or chemical splash goggles and hard hats.	EN-324-HW220-Z1D 1/20/2012	\$52.54	\$68.91	\$85.27	H H H H H H H D Y
--	-------------------------------	---------	---------	---------	-------------------

Four 10 hour days may be worked Monday-Thursday with Friday as a straight-time make up day.

Level D When Capping Landfill Coveralls, safety boots, glasses or chemical splash goggles and hard hats.	EN-324-HW220-Z1DCL 1/20/2012	\$52.29	\$68.53	\$84.77	H H H H H H H D Y
--	---------------------------------	---------	---------	---------	-------------------

Four 10 hour days may be worked Monday-Thursday with Friday as a straight-time make up day.

**Operating Engineer Hazardous Waste Regular Crane, Job Mechanic, Dragline Operator, Boom Truck Operator, Power Shovel Operator and Concrete Pump with boom**

Level D When Capping Landfill Coveralls, safety boots, glasses or chemical splash goggles and hard hats.	EN-324-HWRC-Z1DCL 1/20/2012	\$49.69	\$64.63	\$79.57	H H H H H H H D Y
--	--------------------------------	---------	---------	---------	-------------------

Four 10 hour days may be worked Monday-Thursday with Friday as a straight-time make up day.

**Operating Engineer Hazardous Waste Regular Crane, Job Mechanic, Dragline Operator, Boom Truck Operator, Power Shovel Operator and Concrete Pump with Boom Operator**

Level D - Coveralls, safety boots, glasses or chemical splash goggles and hard hats.	EN-324-HWRC-Z1D 1/20/2012	\$50.56	\$65.94	\$81.31	H H H H H H H D Y
--	------------------------------	---------	---------	---------	-------------------

Four 10 hour days may be worked Monday-Thursday with Friday as a straight-time make up day.

Official Request #: 440  
Requestor: Washtenaw Intermediate School District  
Project Description: WIHI Science Lab - Remodel  
Project Number:  
County: Washtenaw

### Official Rate Schedule

Every contractor and subcontractor shall keep posted on the construction site, in a conspicuous place, a copy of all prevailing wage and fringe benefit rates prescribed in a contract.

# Official 2013 Prevailing Wage Rates for State Funded Projects

Issue Date: 4/11/2013

Contract must be awarded by: 7/10/2013

Page 22 of 31

Classification Name Description	Last Updated	Straight Hourly	Time and a Half	Double Time	Overtime Provision
<b>Operating Engineer Hazardous Waste Regular Crane, Job Mechanic, Dragline Operator, Boom Truck Operator, Power Shovel Operator and Concrete Pump with booms</b>					
Level B & C protection. B - Pressure demand, full face SCBAEN-324-HWRC-Z1B or pressure demand supplied air respirator w/ escape SCBA w/chemical resistant clothing. C - Full face piece, air purifying canister-equipped respirator w/chemical resistant clothing.	1/20/2012	\$51.86	\$67.89	\$83.91	H H H H H H D Y
Four 10 hour days may be worked Monday-Thursday with Friday as a straight-time make up day.					
<b>Operating Engineer Hazardous Waste Regular Crane, Job Mechanic, Dragline Operator, Boom Truck Operator, Power Shovel Operators and Concrete Pump with booms</b>					
Level A - Fully encapsulating chemical resistant suit w/ pressure demand, full face piece SCBA or pressure demand supplied air respirator w/ escape SCBA. The highest available level of respiratory, skin and eye protection.	1/20/2012	\$52.81	\$69.31	\$85.81	H H H H H H D Y
Four 10 hour days may be worked Monday-Thursday with Friday as a straight-time make up day.					
<b>Operating Engineer Steel Work</b>					
Forklift, 1 Drum Hoist	EN-324-ef 6/4/2012	\$55.56	\$73.30	\$91.03	H H D H H H D D Y
Crane w/ 120' boom or longer	EN-324-SW120 6/4/2012	\$58.26	\$77.35	\$96.43	H H D H H H D D Y
Crane w/ 120' boom or longer w/ Oiler	EN-324-SW120-O 10/12/2011	\$59.26	\$78.85	\$98.43	H H D H H H D D Y
Crane w/ 140' boom or longer	EN-324-SW140 6/5/2012	\$59.44	\$79.12	\$98.79	H H D H H H D D Y
Crane w/ 140' boom or longer W/ Oiler	EN-324-SW140-O 6/5/2012	\$60.44	\$80.62	\$100.79	H H D H H H D D Y
Boom & Jib 220' or longer	EN-324-SW220 6/5/2012	\$59.71	\$79.52	\$99.33	H H D H H H D D Y
Crane w/ 220' boom or longer w/ Oiler	EN-324-SW220-O 6/5/2012	\$60.71	\$81.02	\$101.33	H H D H H H D D Y

Official Request #: 440  
 Requestor: Washtenaw Intermediate School District  
 Project Description: WIHI Science Lab - Remodel  
 Project Number:  
 County: Washtenaw

**Official Rate Schedule**  
 Every contractor and subcontractor shall keep posted  
 on the construction site, in a conspicuous place, a copy  
 of all prevailing wage and fringe benefit rates  
 prescribed in a contract.



# Official 2013 Prevailing Wage Rates for State Funded Projects

Issue Date: 4/11/2013

Contract must be awarded by: 7/10/2013

Page 23 of 31

Classification Name Description	Last Updated	Straight Hourly	Time and a Half	Double Time	Overtime Provision
Boom & Jib 300' or longer	EN-324-SW300 6/5/2012	\$61.21	\$81.77	\$102.33	H H D H H D D Y
Crane w/ 300' boom or longer w/ Oiler	EN-324-SW300-O 6/5/2012	\$62.21	\$83.27	\$104.33	H H D H H D D Y
Boom & Jib 400' or longer	EN-324-SW400 6/5/2012	\$62.71	\$84.02	\$105.33	H H D H H D D Y
Crane w/ 400' boom or longer w/ Oiler	EN-324-SW400-O 6/5/2012	\$63.71	\$85.52	\$107.33	H H D H H D D Y
Crane Operator, Job Mechanic, 3 Drum Hoist & Excavator	EN-324-SWCO 1/11/2013	\$57.90	\$76.81	\$95.71	H H D H H D D Y
<b>Apprentice Rates:</b>					
	0-999 hours	\$45.96	\$59.20	\$72.44	
	1,000-1,999 hours	\$47.85	\$62.03	\$76.21	
	2,000-2,999 hours	\$49.74	\$64.86	\$79.98	
	3,000-3,999 hours	\$51.63	\$67.70	\$83.78	
	4,000-4,999 hours	\$53.52	\$70.53	\$87.55	
	5,000 hours	\$55.42	\$73.39	\$91.35	
Crane w/ Oiler	EN-324-SWCO-O 6/4/2012	\$58.90	\$78.31	\$97.71	H H D H H D D Y
Compressor or Welder Operator	EN-324-SWCW 6/4/2012	\$50.45	\$65.63	\$80.81	H H D H H D D Y
Hoisting Operator, 2 Drum Hoist, & Rubber Tire Backhoe	EN-324-SWHO 6/4/2012	\$57.26	\$75.85	\$94.43	H H D H H D D Y
Oiler	EN-324-SWO 6/4/2012	\$49.04	\$63.52	\$77.99	H H D H H D D Y
Tower Crane & Derrick where work is 50' or more above first level	EN-324-SWTD50 10/12/2011	\$58.99	\$78.44	\$97.89	H H D H H D D Y
Tower Crane & Derrick 50' or more w/ Oiler where work station is 50' or more above first level	EN-324-SWTD50-O 10/12/2011	\$59.99	\$79.94	\$99.89	H H D H H D D Y

Official Request #: 440

Requestor: Washtenaw Intermediate School District

Project Description: WIHI Science Lab - Remodel

Project Number:

County: Washtenaw

## Official Rate Schedule

Every contractor and subcontractor shall keep posted on the construction site, in a conspicuous place, a copy of all prevailing wage and fringe benefit rates prescribed in a contract.

# Official 2013 Prevailing Wage Rates for State Funded Projects

Issue Date: 4/11/2013

Contract must be awarded by: 7/10/2013

Page 24 of 31

Classification Name Description	Last Updated	Straight Hourly	Time and a Half	Double Time	Overtime Provision
<b>Operating Engineer Underground</b>					
Class I Equipment	EN-324A1-UC1 1/16/2013	\$50.34	\$65.33	\$80.32	H H H H H H D Y
<b>Apprentice Rates:</b>					
0-999 hours		\$40.75	\$51.25	\$61.74	
1,000-1,999 hours		\$42.24	\$53.48	\$64.72	
2,000-2,999 hours		\$43.75	\$55.75	\$67.74	
3,000-3,999 hours		\$45.24	\$57.98	\$70.72	
4,000-4,999 hours		\$46.74	\$60.23	\$73.72	
5,000-5,999 hours		\$48.25	\$62.50	\$76.74	
Class II Equipment	EN-324A1-UC2 1/16/2013	\$45.61	\$58.24	\$70.86	H H H H H H D Y
Class III Equipment	EN-324A1-UC3 1/16/2013	\$44.88	\$57.14	\$69.40	H H H H H H D Y
Class IV Equipment	EN-324A1-UC4 1/16/2013	\$44.31	\$56.29	\$68.26	H H H H H H D Y
Master Mechanic	EN-324A1-UMM 1/16/2013	\$50.59	\$65.71	\$80.82	H H H H H H D Y
<b>Painter</b>					
Painter (8 hours of repaint work performed on Sunday shall be paid time & one half rate)	PT-22-P 6/18/2012	\$41.32	\$53.78	\$66.23	H H D H D D D D Y
Four 10s allowed Monday-Thursday with Friday makeup day if job down due to weather, holiday or other conditions beyond the control of the employer.					
<b>Apprentice Rates:</b>					
First 6 months		\$28.87	\$35.10	\$41.33	
Second 6 months		\$32.60	\$40.69	\$48.79	
Third 6 months		\$33.85	\$42.57	\$51.29	
Fourth 6 months		\$35.09	\$44.43	\$53.77	
Fifth 6 months		\$36.34	\$46.31	\$56.27	
Final 6 months		\$37.58	\$48.17	\$58.75	
<b>Pipe and Manhole Rehab</b>					
General Laborer for rehab work or normal cleaning and cctv work-top man, scaffold man, CCTV assistant, jetter-vac assistant	TM247 10/15/2012	\$27.20	\$36.70		H H H H H H H N

Official Request #: 440  
 Requestor: Washtenaw Intermediate School District  
 Project Description: WIHI Science Lab - Remodel  
 Project Number:  
 County: Statewide

**Official Rate Schedule**  
 Every contractor and subcontractor shall keep posted on the construction site, in a conspicuous place, a copy of all prevailing wage and fringe benefit rates prescribed in a contract.

# Official 2013 Prevailing Wage Rates for State Funded Projects

Issue Date: 4/11/2013

Contract must be awarded by: 7/10/2013

Page 25 of 31

Classification Name Description	Last Updated	Straight Hourly	Time and a Half	Double Time	Overtime Provision
Tap cutter/CCTV Tech/Grout Equipment Operator: unit driver and operator of CCTV; grouting equipment and tap cutting equipment	TM247-2 10/15/2012	\$31.70	\$43.45		H H H H H H H H N
CCTV Technician/Combo Unit Operator: unit driver and operator of cctv unit or combo unit in connection with normal cleaning and televising work	TM247-3 10/15/2012	\$30.45	\$41.57		H H H H H H H H N
Boiler Operator: unit driver and operator of steam/water heater units and all ancillary equipment associated	TM247-4 10/15/2012	\$32.20	\$44.20		H H H H H H H H N
Combo Unit driver & Jetter-Vac Operator	TM247-5 10/15/2012	\$32.20	\$44.20		H H H H H H H H N
Pipe Bursting & Slip-lining Equipment Operator	TM247-6 10/15/2012	\$33.20	\$45.70		H H H H H H H H N
<b>Plasterer</b> Plasterer	BR9-14-PL 3/7/2013	\$45.19	\$59.88	\$74.56	H H H H H H H D Y
<b>Apprentice Rates:</b>					
		0-749 hours	\$34.91	\$44.46	\$54.00
		750-1499 hours	\$36.38	\$46.66	\$56.94
		1500-2249 hours	\$37.85	\$48.86	\$59.88
		2250-2999 hours	\$39.32	\$51.07	\$62.82
		3000-3749 hours	\$40.78	\$53.26	\$65.74
		3750-4499 hours	\$42.25	\$55.46	\$68.68
<b>Plasterer</b>	PL67 9/8/2010	\$44.72	\$60.11	\$75.50	H H H X D D D D N
<b>Apprentice Rates:</b>					
		1st 6 months	\$29.33	\$37.02	\$44.72
		2nd 6 months	\$30.87	\$39.34	\$47.80
		3rd 6 months	\$32.41	\$41.64	\$50.88
		4th 6 months	\$35.49	\$46.26	\$57.04
		5th 6 months	\$38.56	\$51.16	\$63.76
		6th 6 months	\$41.64	\$55.49	\$69.34

Official Request #: 440  
 Requestor: Washtenaw Intermediate School District  
 Project Description: WIHI Science Lab - Remodel  
 Project Number:  
 County: Washtenaw

**Official Rate Schedule**  
 Every contractor and subcontractor shall keep posted on the construction site, in a conspicuous place, a copy of all prevailing wage and fringe benefit rates prescribed in a contract.

# Official 2013 Prevailing Wage Rates for State Funded Projects

Issue Date: 4/11/2013

Contract must be awarded by: 7/10/2013

Page 26 of 31

Classification Name	Description	Last Updated	Straight Hourly	Time and a Half	Double Time	Overtime Provision
<b>Plumber, Pipefitter, Welder &amp; HVAC</b>						
Plumber, Pipefitter, Welder & HVAC	PL-190	6/11/2012	\$57.50	\$81.21	\$104.92	H H H H H H D Y
4 ten hour days may be worked only Monday thru Friday						
<b>Apprentice Rates:</b>						
			1st Year	\$36.27	\$49.37	\$62.46
			2nd Year	\$39.66	\$54.45	\$69.24
			3rd Year	\$43.04	\$59.52	\$76.00
			4th Year	\$46.42	\$64.59	\$82.76
			5th Year-1st 6 months	\$48.11	\$67.13	\$86.14
			5th Year-2nd 6 months	\$49.80	\$69.66	\$89.52
 <b>Roofer</b>						
Commercial Roofer	RO-70-Z6	4/9/2013	\$44.09	\$57.65	\$71.21	H H H X H H D Y
4 consecutive tens allowed M-TH						
<b>Apprentice Rates:</b>						
			1st Class	\$26.23	\$33.01	\$39.79
			2nd Class	\$28.00	\$35.46	\$42.92
			3rd Class	\$29.74	\$37.87	\$46.01
			4th Class	\$32.05	\$41.14	\$50.22
			5th Class	\$34.07	\$43.97	\$53.87
			6th Class	\$35.56	\$46.00	\$56.44
			7th Class	\$37.04	\$48.03	\$59.01
 <b>Sewer Relining</b>						
Class I-Operator of audio visual CCTV system including remote in-ground cutter and other equipment used in conjunction with CCTV system.	SR-I	3/27/2013	\$42.07	\$56.90	\$71.72	H H H H H H D N
Class II-Operator of hot water heaters and circulation system; water jetters; and vacuum and mechanical debris removal systems and those assisting.	SR-II	3/27/2013	\$40.54	\$54.60	\$68.66	H H H H H H D N

Official Request #: 440

Requestor: Washtenaw Intermediate School District

Project Description: WIHI Science Lab - Remodel

Project Number:

County: Statewide

### Official Rate Schedule

Every contractor and subcontractor shall keep posted on the construction site, in a conspicuous place, a copy of all prevailing wage and fringe benefit rates prescribed in a contract.

# Official 2013 Prevailing Wage Rates for State Funded Projects

Issue Date: 4/11/2013

Contract must be awarded by: 7/10/2013

Page 27 of 31

Classification Name      Description	Last Updated	Straight Hourly	Time and a Half	Double Time	Overtime Provision
---	-----------------	--------------------	--------------------	----------------	-----------------------

**Sheet Metal Worker**

Sheet Metal Worker	SHM-80		\$58.32	\$74.80	\$91.28	H H D H D D D D Y
A 4 10 schedule may be worked, 4 consecutive days Monday thru Friday.		1/19/2012				

**Apprentice Rates:**

1st & 2nd Periods Indentured before 6-1-11	\$40.96	\$49.32	\$57.69
3rd & 4th Periods Indentured before 6-1-11	\$42.21	\$51.20	\$60.19
5th & 6th Periods Indentured before 6-1-11	\$43.51	\$53.16	\$62.79
7th & 8th Periods Indentured before 6-1-11	\$46.05	\$56.96	\$67.87
9th & 10th Periods Indentured before 6-1-11	\$48.63	\$60.83	\$73.03
1st & 2nd Periods Indentured AFTER 6-1-11	\$36.14	\$43.56	\$50.97
3rd & 4th Periods Indentured AFTER 6-1-11	\$37.79	\$46.04	\$54.27
5th & 6th Periods Indentured AFTER 6-1-11	\$39.44	\$48.51	\$57.57
7th & 8th Periods Indentured AFTER 6-1-11	\$41.08	\$50.97	\$60.85

Architectural Sheet Metal Worker	SHM-80-SD		\$40.85	\$53.00	\$65.15	H H H H H H H D Y
		2/15/2012				

**Sprinkler Fitter**

Sprinkler Fitter	SP 704		\$61.92	\$82.38	\$102.83	H H D H D D D D Y
4 ten hour days allowed Monday-Friday only in those weeks containing a holiday and the preceding or succeeding holiday week		3/11/2013				

**Apprentice Rates:**

1st Period	\$27.37	\$35.55	\$43.73
2nd Period	\$39.42	\$48.63	\$57.83
3rd Period	\$41.46	\$51.69	\$61.91
4th Period	\$43.51	\$54.76	\$66.01
5th Period	\$45.56	\$57.83	\$70.11
6th Period	\$47.60	\$60.89	\$74.19
7th Period	\$49.65	\$63.97	\$78.29
8th Period	\$51.69	\$67.03	\$82.37
9th Period	\$53.74	\$70.11	\$86.47
10th Period	\$55.78	\$73.17	\$90.55

Official Request #: 440

Requestor: Washtenaw Intermediate School District

Project Description: WIHI Science Lab - Remodel

Project Number:

County: Washtenaw

**Official Rate Schedule**

Every contractor and subcontractor shall keep posted on the construction site, in a conspicuous place, a copy of all prevailing wage and fringe benefit rates prescribed in a contract.

# Official 2013 Prevailing Wage Rates for State Funded Projects

Issue Date: 4/11/2013

Contract must be awarded by: 7/10/2013

Page 28 of 31

Classification	Last Updated	Straight Hourly	Time and a Half	Double Time	Overtime Provision
Name Description					

<b>Terrazzo</b>					
Terrazzo Finisher	BR1-TRF	\$42.89	\$53.82	\$64.75	H H D H D D D D Y
A 4 ten workweek may be worked Monday thru Thursday or Tuesday thru Friday.		11/26/2012			

**Apprentice Rates:**

Level 1	\$18.57	\$24.54	\$30.52
Level 2	\$19.74	\$26.30	\$32.86
Level 3	\$26.34	\$33.11	\$39.87
Level 4	\$27.77	\$35.25	\$42.73
Level 5	\$29.25	\$36.95	\$44.65
Level 6	\$30.83	\$38.92	\$47.02
Level 7	\$32.48	\$40.65	\$48.82
Level 8	\$33.93	\$42.50	\$51.08

<b>Terrazzo Worker</b>					
Terrazzo Worker	BR1-TRW	\$48.50	\$62.24	\$75.97	H H D H D D D D Y
A 4 ten workweek may be worked Monday thru Thursday or Tuesday thru Friday.		11/26/2012			

**Apprentice Rates:**

Level 1	\$24.52	\$31.83	\$39.13
Level 2	\$27.50	\$35.59	\$43.67
Level 3	\$32.59	\$40.95	\$49.31
Level 4	\$35.26	\$44.56	\$53.86
Level 5	\$37.47	\$47.04	\$56.61
Level 6	\$41.04	\$52.32	\$63.60
Level 7	\$41.69	\$53.15	\$64.61
Level 8	\$42.60	\$54.51	\$66.43

<b>Tile</b>					
Tile Finisher	BR1-TF	\$42.43	\$53.13	\$63.83	H H D H D D D D Y
A 4 ten workweek may be worked Monday thru Thursday or Tuesday thru Friday.		11/26/2012			

**Apprentice Rates:**

Level 1	\$18.57	\$24.54	\$30.52
Level 2	\$19.74	\$26.30	\$32.86
Level 3	\$26.34	\$33.11	\$39.87
Level 4	\$27.77	\$35.25	\$42.73
Level 5	\$29.25	\$36.95	\$44.65
Level 6	\$30.83	\$38.92	\$47.02
Level 7	\$32.48	\$40.65	\$48.82
Level 8	\$33.93	\$42.50	\$51.08

Official Request #: 440

Requestor: Washtenaw Intermediate School District

Project Description: WIHI Science Lab - Remodel

Project Number:

County: Washtenaw

### Official Rate Schedule

**Every contractor and subcontractor shall keep posted on the construction site, in a conspicuous place, a copy of all prevailing wage and fringe benefit rates prescribed in a contract.**

# Official 2013 Prevailing Wage Rates for State Funded Projects

Issue Date: 4/11/2013

Contract must be awarded by: 7/10/2013

Page 29 of 31

Classification Name Description	Last Updated	Straight Hourly	Time and a Half	Double Time	Overtime Provision
Tile Layer A 4 ten workweek may be worked Monday thru Thursday or Tuesday thru Friday.	BR1-TL 11/26/2012	\$48.45	\$62.16	\$75.87	H H D H D D D D Y

**Apprentice Rates:**

Level 1	\$24.52	\$31.83	\$39.13
Level 2	\$27.50	\$35.59	\$43.67
Level 3	\$32.59	\$40.95	\$49.31
Level 4	\$35.26	\$44.56	\$53.86
Level 5	\$37.47	\$47.04	\$56.61
Level 6	\$41.04	\$52.32	\$63.60
Level 7	\$41.69	\$53.15	\$64.61
Level 8	\$42.60	\$54.51	\$66.43

**Truck Driver**

on all trucks of 8 cubic yard capacity or less	TM-RB1 10/9/2012	\$40.40	\$37.84		H H H H H H H H Y
of all trucks of 8 cubic yard capacity or over	TM-RB1A 10/9/2012	\$40.50	\$37.99		H H H H H H H H Y
on euclid type equipment	TM-RB1B 10/9/2012	\$40.65	\$38.21		H H H H H H H H Y

**Underground Laborer Open Cut, Class I**

Construction Laborer	LAUC-Z2-1 1/16/2013	\$34.47	\$45.51	\$56.55	H H H H H H H D Y
----------------------	------------------------	---------	---------	---------	-------------------

**Apprentice Rates:**

0-1,000 work hours	\$29.53	\$38.10	\$46.67
1,001-2,000 work hours	\$30.52	\$39.59	\$48.65
2,001-3,000 work hours	\$31.51	\$41.07	\$50.63
3,001-4,000 work hours	\$33.48	\$44.03	\$54.57

**Underground Laborer Open Cut, Class II**

Mortar and material mixer, concrete form man, signal man, well point man, manhole, headwall and catch basin builder, guard rail builders, headwall, seawall, breakwall, dock builder and fence erector.	LAUC-Z2-2 1/16/2013	\$34.58	\$45.68	\$56.77	H H H H H H H D Y
--	------------------------	---------	---------	---------	-------------------

**Apprentice Rates:**

0-1,000 work hours	\$29.61	\$38.22	\$46.83
1,001-2,000 work hours	\$30.61	\$39.72	\$48.83
2,001-3,000 work hours	\$31.60	\$41.21	\$50.81
3,001-4,000 work hours	\$33.59	\$44.19	\$54.79

Official Request #: 440

Requestor: Washtenaw Intermediate School District

Project Description: WIHI Science Lab - Remodel

Project Number:

County: Washtenaw

**Official Rate Schedule**

Every contractor and subcontractor shall keep posted on the construction site, in a conspicuous place, a copy of all prevailing wage and fringe benefit rates prescribed in a contract.

# Official 2013 Prevailing Wage Rates for State Funded Projects

Issue Date: 4/11/2013

Contract must be awarded by: 7/10/2013

Page 30 of 31

Classification Name      Description	Last Updated	Straight Hourly	Time and a Half	Double Time	Overtime Provision
<b>Underground Laborer Open Cut, Class III</b>					
Air, gasoline and electric tool operator, vibrator operator, drillers, pump man, tar kettle operator, bracers, rodder, reinforced steel or mesh man (e.g. wire mesh, steel mats, dowel bars, etc.), cement finisher, welder, pipe jacking and boring man, wagon drill and air track operator and concrete saw operator (under 40 h.p.), windlass and tugger man, and directional boring man.	LAUC-Z2-3  1/16/2013	\$34.70	\$45.86	\$57.01	H H H H H H H D Y
<b>Apprentice Rates:</b>					
0-1,000 work hours		\$29.70	\$38.35	\$47.01	
1,001-2,000 work hours		\$30.70	\$39.85	\$49.01	
2,001-3,000 work hours		\$31.70	\$41.35	\$51.01	
3,001-4,000 work hours		\$33.70	\$44.35	\$55.01	
<b>Underground Laborer Open Cut, Class IV</b>					
Trench or excavating grade man.	LAUC-Z2-4  1/16/2013	\$34.77	\$45.96	\$57.15	H H H H H H H D Y
<b>Apprentice Rates:</b>					
0-1,000 work hours		\$29.75	\$38.43	\$47.11	
1,001-2,000 work hours		\$30.76	\$39.95	\$49.13	
2,001-3,000 work hours		\$31.76	\$41.45	\$51.13	
3,001-4,000 work hours		\$33.77	\$44.46	\$55.15	
<b>Underground Laborer Open Cut, Class V</b>					
Pipe Layer	LAUC-Z2-5  1/16/2013	\$34.92	\$46.19	\$57.45	H H H H H H H D Y
<b>Apprentice Rates:</b>					
0-1,000 work hours		\$29.87	\$38.61	\$47.35	
1,001-2,000 work hours		\$30.88	\$40.13	\$49.37	
2,001-3,000 work hours		\$31.89	\$41.64	\$51.39	
3,001-4,000 work hours		\$33.91	\$44.67	\$55.43	
<b>Underground Laborer Open Cut, Class VI</b>					
Grouting man, top man assistant, audio visual television operations and all other operations in connection with closed circuit television inspection, pipe cleaning and pipe relining work and the installation and repair of water service pipe and appurtenances.	LAUC-Z2-6  1/16/2013	\$32.22	\$42.14	\$52.05	H H H H H H H D Y
<b>Apprentice Rates:</b>					
0-1,000 work hours		\$27.84	\$35.57	\$43.29	
1,001-2,000 work hours		\$28.72	\$36.89	\$45.05	
2,001-3,000 work hours		\$29.59	\$38.19	\$46.79	
3,001-4,000 work hours		\$31.34	\$40.81	\$50.29	

Official Request #: 440  
 Requestor: Washtenaw Intermediate School District  
 Project Description: WIHI Science Lab - Remodel  
 Project Number:  
 County: Washtenaw

### Official Rate Schedule

Every contractor and subcontractor shall keep posted on the construction site, in a conspicuous place, a copy of all prevailing wage and fringe benefit rates prescribed in a contract.



# Official 2013 Prevailing Wage Rates for State Funded Projects

Issue Date: 4/11/2013

Contract must be awarded by: 7/10/2013

Page 31 of 31

Classification Name	Description	Last Updated	Straight Hourly	Time and a Half	Double Time	Overtime Provision
<hr/>						
<b>Underground Laborer Open Cut, Class VII</b>						
Restoration laborer, seeding, sodding, planting, cutting, mulching and topsoil grading and the restoration of property such as replacing mail boxes, wood chips, planter boxes, flagstones etc.	LAUC-Z2-7	1/16/2013	\$28.86	\$37.10	\$45.33	H H H H H H D Y

**Apprentice Rates:**

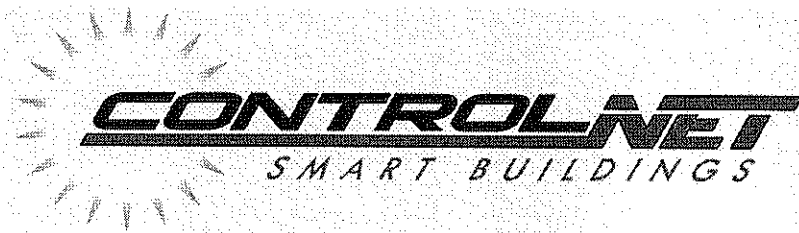
0-1,000 work hours	\$25.32	\$31.79	\$38.25
1,001-2,000 work hours	\$26.03	\$32.85	\$39.67
2,001-3,000 work hours	\$26.74	\$33.91	\$41.09
3,001-4,000 work hours	\$28.15	\$36.03	\$43.91

Official Request #: 440  
 Requestor: Washtenaw Intermediate School District  
 Project Description: WIHI Science Lab - Remodel  
 Project Number:  
 County: Washtenaw

**Official Rate Schedule**

Every contractor and subcontractor shall keep posted on the construction site, in a conspicuous place, a copy of all prevailing wage and fringe benefit rates prescribed in a contract.





**To: Wold Architects & Engineers**

**ControlNET, L.L.C.** is pleased to offer the following quotation for:

**Project Name:** WIHi Science Lab Remodel  
**Owner:** Washtenaw Intermediate School District  
**Mechanical Engineer:** Wold Architects & Engineers  
**Bid Date & Time:** 4/12/2013  
**Addenda / Memos:** Addendum 1

**Our Quotation Includes the Following:**

We propose to furnish and install all control components necessary to add one ERU to the new Science Lab at the WIHi building. The existing ControlNET Web based open system of Direct Digital Control utilizing open protocol controllers and Tridium's Niagara AX Framework will be utilized.

**Included:**

1. Web based, thin client user interface.
2. Unlimited multiple user access from any PC on the owners LAN/WAN.
3. Custom color graphics of all equipment including floor plans as specified.
4. One-year warranty.
5. Customer training.
6. Controller and enclosure for space temp monitoring and logic.
7. All necessary control wiring.

**Equipment Controlled:**

1. Energy Recovery Unit (1)

**Assumptions and/or Exceptions:**

1. IP addresses and network wiring is to be provided by the owner.
2. All controls provided by ERU manufacturer. BMS shall only give the factory controller a space temp setpoint. Factory controller responsible for Discharge Air Reset Control.

**ALL FOR THE NET SUM OF:**

Five Thousand Nine Hundred Fifty Dollars.....\$5,950.00

Sincerely,

Eric Followell

Thank you for giving ControlNET the opportunity to provide you with a quotation for this project. If you have any questions or concerns please do not hesitate to contact us @ 616.777.0037 or 269.373.5555.



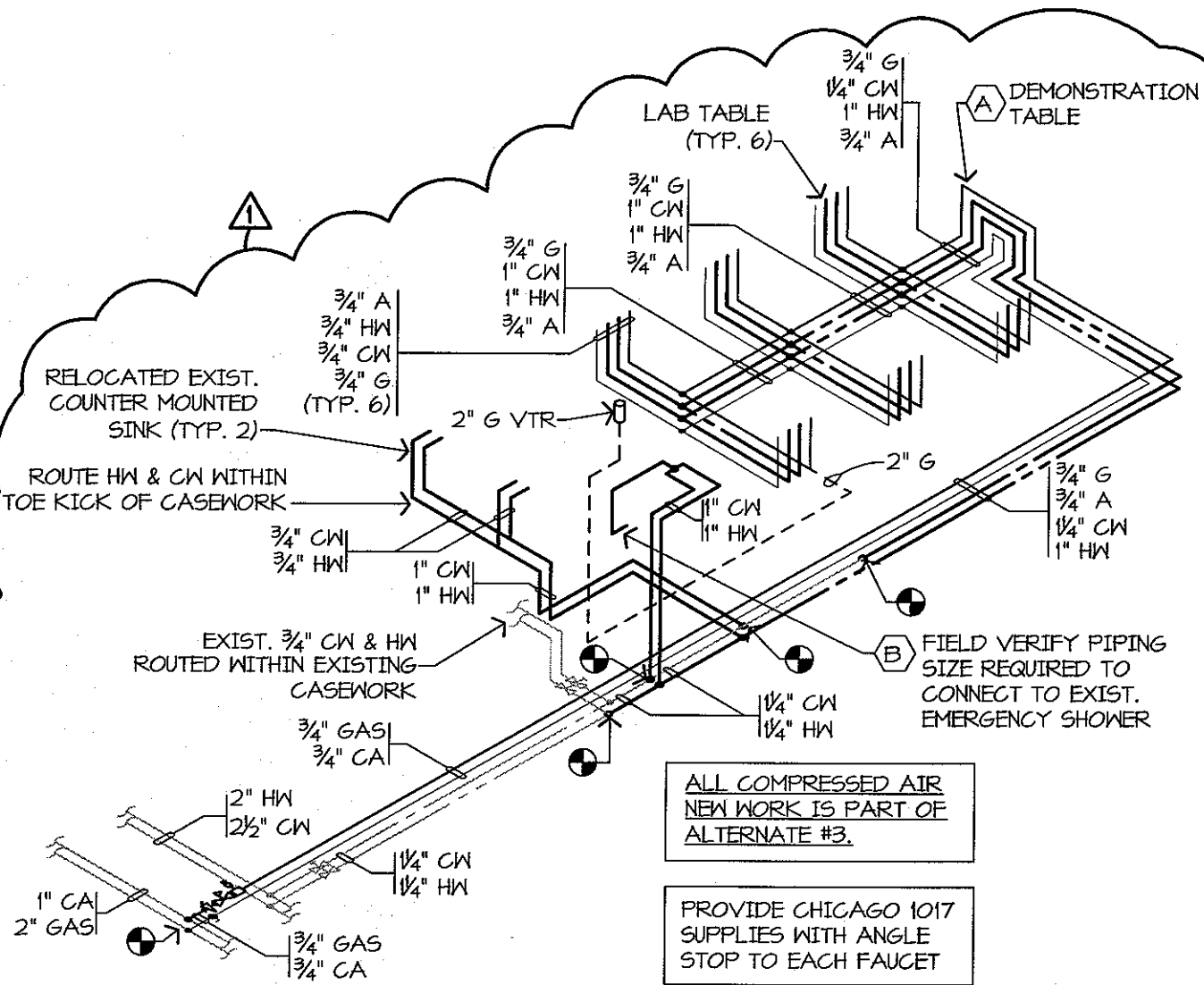


architects  
engineers  
www.woldae.com

detail of construction

333 West Seventh St  
Suite 320  
Royal Oak, MI 48067

tel 248 284 0611  
fax 248 284 0615  
mail@woldae.com



E1

SCIENCE LAB SUPPLY RISER DIAGRAM

NO SCALE

PROJECT: WIHI SCIENCE LAB REMODEL

DATE: 4/5/13

COMMISSION NO: 134003

REVISIONS 1 ADDENDUM # 2

REV. DATE 4/16/13





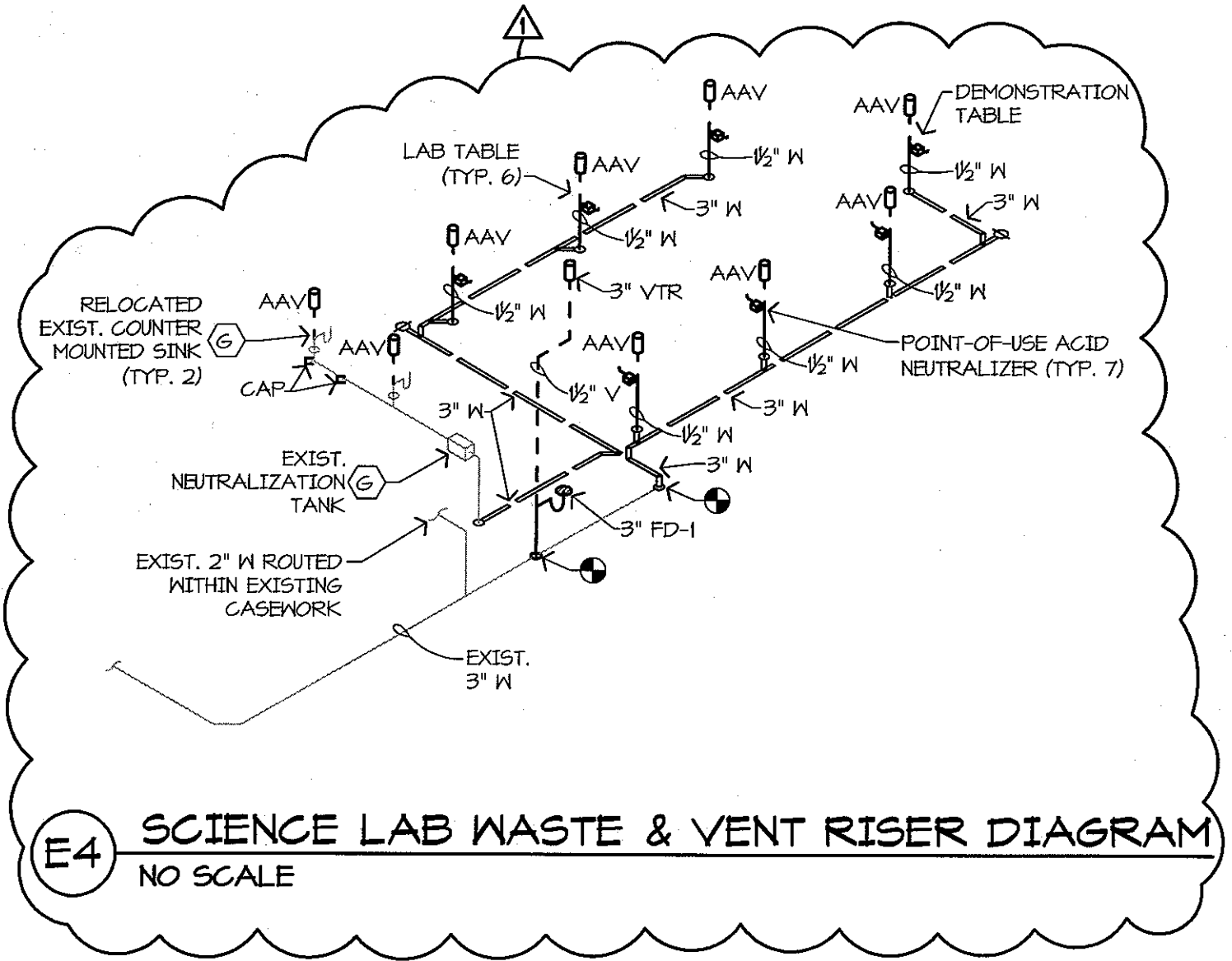
**WOLD**

architects  
engineers  
www.woldae.com

**detail of construction**

333 West Seventh St  
Suite 320  
Royal Oak, MI 48067

tel 248 284 0611  
fax 248 284 0615  
mail@woldae.com



**E4 SCIENCE LAB WASTE & VENT RISER DIAGRAM**  
NO SCALE

**PROJECT:** WIHI SCIENCE LAB REMODEL  
**DATE:** 4/5/13  
**COMMISSION NO:** 134003  
**REVISIONS:** 1 ADDENDUM # 2  
**REV. DATE:** 4/16/13

RM2  
M1.1

