

ADDENDUM

Project Name: The Lamphere Schools
Early Childhood Center Building Renovations

Addendum No: One (1)

Project Numbers: 13-109

Issue Date: March 29, 2013

Project Location: Madison Heights, Michigan

This Addendum forms a part of the above described Contract Documents and supersedes supplements or clarifies parts thereof to the extent defined by the terms set forth in this Addendum.

This Addendum consists of (2) typed pages and the following attachments:

Drawings: Mechanical drawing M4-01 reissued with this addendum.

GENERAL INFORMATION ITEMS:

ITEM G1

Informational item of clarification from Pre-bid meeting held on March 26, 2013.

Note: not all items discussed at the meeting are included in the addendum if the information discussed is part of the current issued information. Items listed in this Addendum supplement or clarify information in bidding documents. Items of change in scope or documentation are listed as separate items in the addendum.

- A. Additional materials being pre-purchased and or supplied by the owner for installation by the bid category contractors is listed as addendum items.
- B. Case work and cabinetry included in Bid Category #3 will be supplied and installed by the Bid Category #3 contractor per contract documents. The owner will not be supplying any casework materials.
- C. Bid bond shall be included with all bids irrespective of bid amount. Labor/material bond is required for all bids \$50,000.00 or greater.
- D. Application of roof deck/wall fire sealant at 2 hour fire barrier and pipe penetration fire sealant in above door openings is illustrated on the Life Safety plan A0-02 and reflected Ceiling plan A4-01. Work is part of bid category #2

SPECIFICATIONS

ITEM SP1

Specification Section 011200 – Multiple Contract Summary (revised but not reissued with this addendum).

- A. 1.12, 15 Materials to be pre-purchased by the owner and supplied for installation as part of other bid categories include: Note respective bid category contractor to receive and install owner purchased / supplied items.
 - a. Gypsum board
 - b. Metal stud and track materials
 - c. Ceiling tile material.
 - d. Ceiling grid material including mains, cross tees, ceiling edge angles, extended leg edge angles as necessary at windows and door openings, grid corners and trims.

- e. Surface mounted raceway for installation of electrical devices located on existing masonry wall as indicated on electrical bid documents.
- B. 1.12 16. (Bid Category #2) Items to be supplied by the Contractor related to their installation of owner supplied materials to include but limited to :
- a. Tools and labor to receive, store, and installation of owner provide materials.
 - b. Fasteners, clips, brackets, hangers, power actuated fasteners, reinforcing and finishing materials to prepare materials for final finishing, miscellaneous wood blocking/framing, and other items necessary to install owner provided materials.
- C. 1.12 17 (Bid Category #3) items to be supplied by the Electrical Contractor related to their installation of owner supplied materials is to include but not limited to:
- a. New conductors and power /data outlets, switches, other devices for surface mounted raceways on existing masonry walls.
 - b. Tools and labor fasteners to receive, modify and install owner provided surface mounted race ways on existing masonry walls in locations and configurations shown and specified on the electrical bid documents.

MECHANICAL DRAWINGS

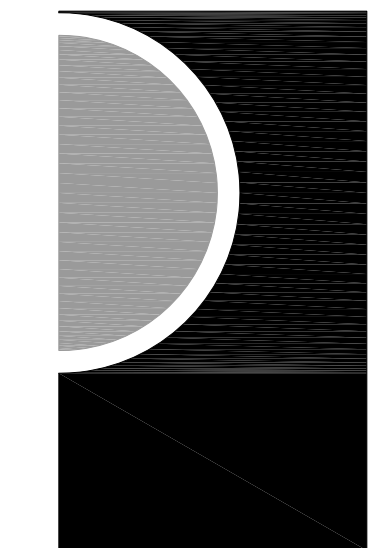
ITEM M1 Drawing M4-01 (Re-issued).

- A. Refer to drawing for mixing valve piping detail.

ITEM M2 Drawing M1-02 (revised but not re-issued).

- A. Provide new domestic water mixing valves complying with ASSE 1070 on all new sinks.

****END OF ADDENDUM****

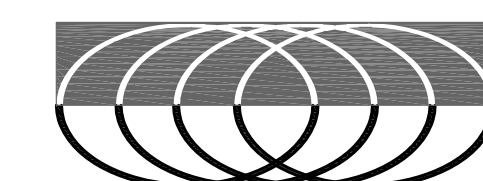


PARTNERS in Architecture, PLC
65 MARKET STREET
MOUNT CLEMENS, MI 48043
P 586.469.3600
F 586.469.3607

Statement of Intellectual Property
The ideas, concepts, drawings and thoughts conveyed herein are the intellectual property of PARTNERS in Architecture, PLC, 65 Market Street, Mount Clemens, MI 48043 (P 586.469.3600). This set of drawings, in whole or in part, may not be reproduced, without the written consent of PARTNERS in Architecture, PLC. This information is protected under U.S. Copyright Law, all rights reserved.

© Copyright 2012

CONSULTANT



MAENGINEERING
MECHANICAL/ELECTRICAL
2001 E. Brown Street
Birmingham, Michigan 48009
11248125811610
11248125819538

KEY PLAN

OWNER

Lamphere Schools

PROJECT NAME

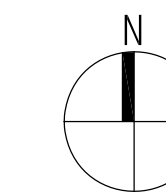
Early Childhood Center

PROJECT NO.

ISSUES / REVISIONS

Bidding/Construction 03/18/13

ADDENDUM #1 3/28/13
PRE PURCHASE PACKAGE
02/12/2013



DRAWN BY

JTA

CHECKED BY

JTA

APPROVED BY

JR

SHEET NAME

MECHANICAL
SCHEDULES &
DETAILS

SHEET NO.

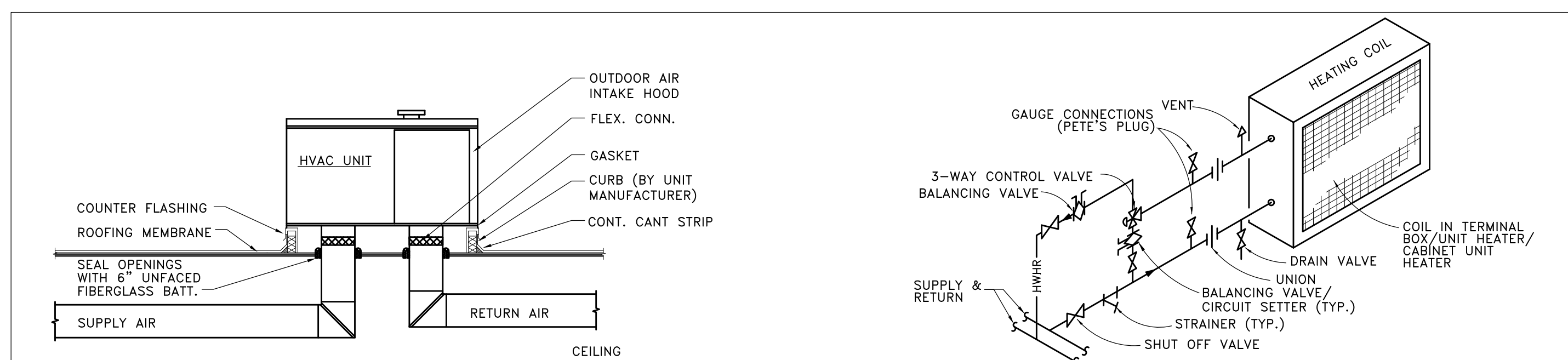
M401

UNIT VENTILATOR SCHEDULE (PRE-PURCHASED BY OWNER & INSTALLED BY CONTRACTOR)

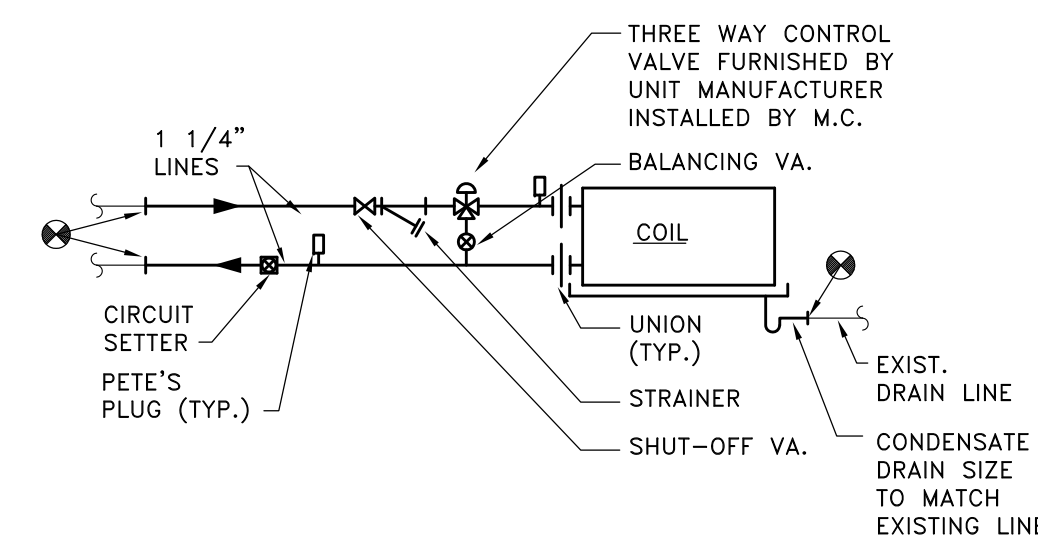
TAG	MANUFACTURER & MODEL No.	AREA SERVED	MOUNTING	CFM	MIN. OA CFM	COOLING EAT 80/67		HEATING EAT - 55°F						ELECTRICAL		NOTES/ACCESSORIES		
						TOT MBH	SENS MBH	MBH	EWT DEG F	T.D. DEG F	GPM	ROWS	P.D. (FT)	VOLT	HP		MCA	MOCP
UV-1	AAF UAZQ-6024	CLASSROOM	FLOOR	1000	300	35.3	26.6	57.1	160	12	8.0	1	10.2	208/3	1/4	15.5	20	A B C D E F G H J K L M N O
UV-2	AAF UAZQ-6024	CLASSROOM	FLOOR	1000	300	35.3	26.6	57.1	160	12	8.0	1	10.2	208/3	1/4	15.5	20	A B C D E F G H J K L M N O
UV-3	AAF UAZQ-6024	CLASSROOM	FLOOR	1000	300	35.3	26.6	57.1	160	12	8.0	1	10.2	208/3	1/4	15.5	20	A B C D E F G H J K L M N O
UV-4	AAF UAZQ-6024	CLASSROOM	FLOOR	1000	300	35.3	26.6	57.1	160	12	8.0	1	10.2	208/3	1/4	15.5	20	A B C D E F G H J K L M N O
UV-5	AAF UAZQ-6024	CLASSROOM	FLOOR	1000	300	35.3	26.6	57.1	160	12	8.0	1	10.2	208/3	1/4	15.5	20	A B C D E F G H J K L M N O
UV-6	AAF UAZQ-6024	CLASSROOM	FLOOR	1000	300	35.3	26.6	57.1	160	12	8.0	1	10.2	208/3	1/4	15.5	20	A B C D E F G H J K L M N O

NOTES/ACCESSORIES DESIGNATION

A	THREE SPEED SWITCH WITH OFF POSITION TO SERVICE DISCONNECT	H	COLOR: ANTIQUE IVORY
B	THROW AWAY FILTER	J	CONTROLS: FACTORY DDC CONTROLS WITH REMOTE ELECTRONIC SENSOR WITH SETPOINT ADJUSTMENT, A COMMUNICATION PORT AND BIMETAL THERMOMETER.
C	FACE AND BYPASS DAMPER	K	PROVIDE 12" SERVICE CABINET AS INDICATED ON DRAWINGS
D	FLOOR UNIT WITH ADAPTOR BACK	L	PROVIDE (2) NEW CUSTOM INTAKE LOUVER (APPROXIMATELY 87x30 TOTAL) WITH SPLIT
E	TWO WAY MODULATING CONTROL VALVE FURNISHED BY UNIT MANUFACTURER INSTALLED BY MECH. CONTRACTOR	M	100% OUTDOOR AIR, DRY BULB ECONOMIZER
F	PROVIDE TOP DISCHARGE AIR GRILLE AND TWO TOP MOUNTED ACCESS DOORS	N	REMOTE THERMOSTAT
G	METAL WASH SHIPPED LOOSE FOR FIELD INSTALLATION BY MECHANICAL CONTRACTOR	O	PROVIDE FILLER CABINET AT END OF UNIT. CONTRACTOR TO CUT TO FIT



SECTION THROUGH HVAC UNIT
NO SCALE

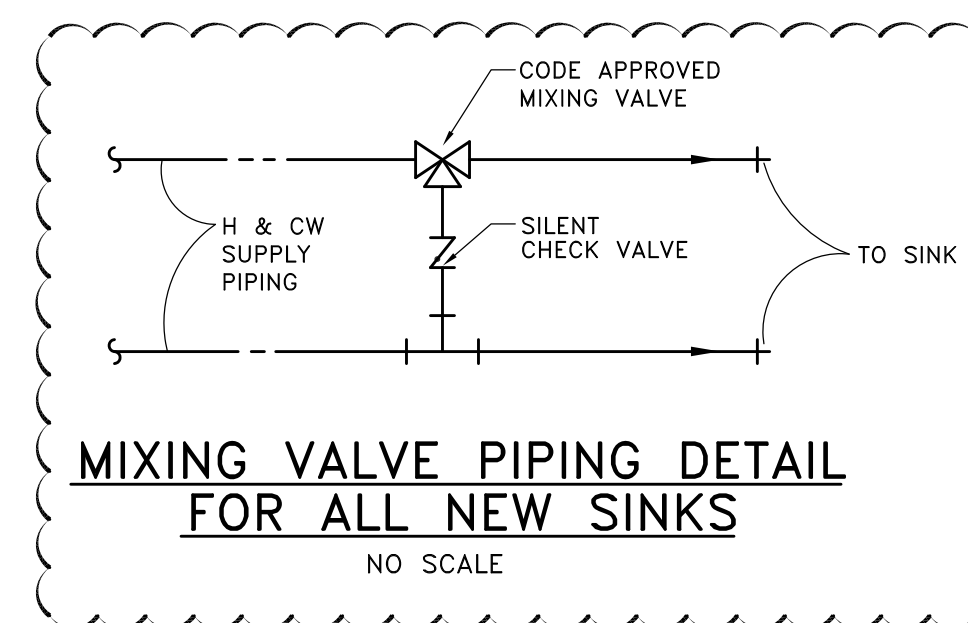


UNIT VENTILATOR SCHEMATIC PIPING DIAGRAM
NO SCALE

CONTROL SEQUENCE
ASHRAE II CYCLE UTILIZING MICROTECH CONTROLLER FURNISHED BY UNIT MANUFACTURER. SUPPLIED WITH FACE & BYPASS DAMPER. BELOW 37°F, CONTROL VALVE TO GO FULLY OPENED AND FACE & BYPASS DAMPER IS MODULATED.

NOTE:
1. EXTEND CONDENSATE DRAIN LINE THRU WALL.

N.I.C.



MIXING VALVE PIPING DETAIL FOR ALL NEW SINKS
NO SCALE

HOT WATER HEATING COIL SCHEDULE

TAG	MANUFACTURER & MODEL No.	DUCT SIZE	CFM	AIR			WATER					CONTROL VALVE	CAPACITY MBH	WEIGHT LBS	NOTES/ACCESSORIES
				MAXIMUM A.P.D. IN. W.G.	EAT DEG F	LAT DEG F	GPM	ROWS	EWT DEG F	LWT DEG F	MAXIMUM W.P.D. FT. H2O				
RHC-1	TRANE D5WB18040	34"x12"	3000	0.177	55	100	15.0	2	180	160	0.87	3-WAY	146.41	75	A
RHC-2	TRANE D5WB12030	24"x10"	1500	0.187	55	100	7.5	2	180	160	0.58	3-WAY	73.2	50	A
RHC-3	TRANE D5WB12018	16"x10"	900	0.193	55	100	4.5	2	180	160	0.41	3-WAY	43.92	40	A
RHC-4	TRANE D5WB12032	25"x10"	1600	0.181	55	100	8.0	2	180	160	0.63	3-WAY	78.08	50	A
RHC-5	TRANE D5WB18032	32"x10"	2400	0.181	55	100	12.0	2	180	160	0.65	3-WAY	117.13	65	A

NOTES AND ACCESSORIES DESIGNATION

A	PROVIDE TWO T-STAT
---	--------------------

HVAC UNIT SCHEDULE

TAG	MANUFACTURER & MODEL No.	AREA SERVED	COOLING CAP 80°DB, 67°WB		SUPPLY FAN			ELECTRICAL		MIN. O.A. CFM	NOTES/ACCESSORIES
			TOTAL MBH	SENS MBH	CFM	ESP	HP	VOLTS/PHASE	MCA		
HVAC-1	TRANE THL092E2R0A*DDC101B000AA1	CENTRUM	92.6	71.7	3000	1.00	2	208/3	41.9	50	A B C D E F G H I J K L

NOTES AND ACCESSORIES DESIGNATION

A	14" HIGH PRE-FABRICATED CURB	G	PROGRAMMABLE DIGITAL THERMOSTAT, AUTO CHANGE OVER TOUCHPAD WITH LOCKING COVER
B	2" THROWAWAY MERV 8 FILTERS, HINGED ACCESS	H	CONVENIENCE OUTLET
C	SMOKE DETECTOR	I	SINGLE POINT ELECTRICAL CONNECTION
D	DRY BULB ECONOMIZER WITH BARAMETRIC RELIEF	J	NO HEAT
E	CO2 SENSOR	K	HAIL PROTECTION
F	DIGITAL CONTROL'S	L	R-410A, HIGH EFFICIENCY

Plot: 12/28/13 8:59 AM by John Avonon File Name: H:\ACAD\FILES\551174-Lamphere_Schools\Mechanical\Building\CAD\MECH\15174-M401.dwg