

Integrated Design Solutions, LLC  
Architecture, Engineering, Interiors & Technology

1441 West Long Lake, Suite 200, Troy, MI 48069  
tel 248.823.2100 - fax 248.823.2200  
www.ids-troy.com

### GENERAL NOTES

- A. CONTRACTOR TO FIELD VERIFY ALL DIMENSIONS AND CONDITIONS.
- B. CONTRACTOR SHALL PROVIDE ALL WORK NECESSARY TO PROVIDE COMPLETE PROJECT AS DESCRIBED IN THESE DOCUMENTS.
- C. CONTINUOUSLY MAINTAIN ALL MEANS OF EGRESS AND ALL FIRE PROTECTION FEATURES FOR PORTIONS OF THE BUILDING THAT REMAIN OCCUPIED DURING CONSTRUCTION.
- D. PROTECT ALL EXISTING FINISHES DURING CONSTRUCTION.
- E. COORDINATE SCOPE AND EXTENT OF DEMOLITION WORK WITH NEW WORK PLANS AND DETAILS.
- F. PATCH AND/OR REPAIR ALL EXISTING FLOOR, WALL AND/OR CEILING FINISHES AS REQUIRED TO MATCH EXISTING OR TO ACCEPT NEW FINISHES AS SCHEDULED AT ALL AREAS AFFECTED BY THE WORK.

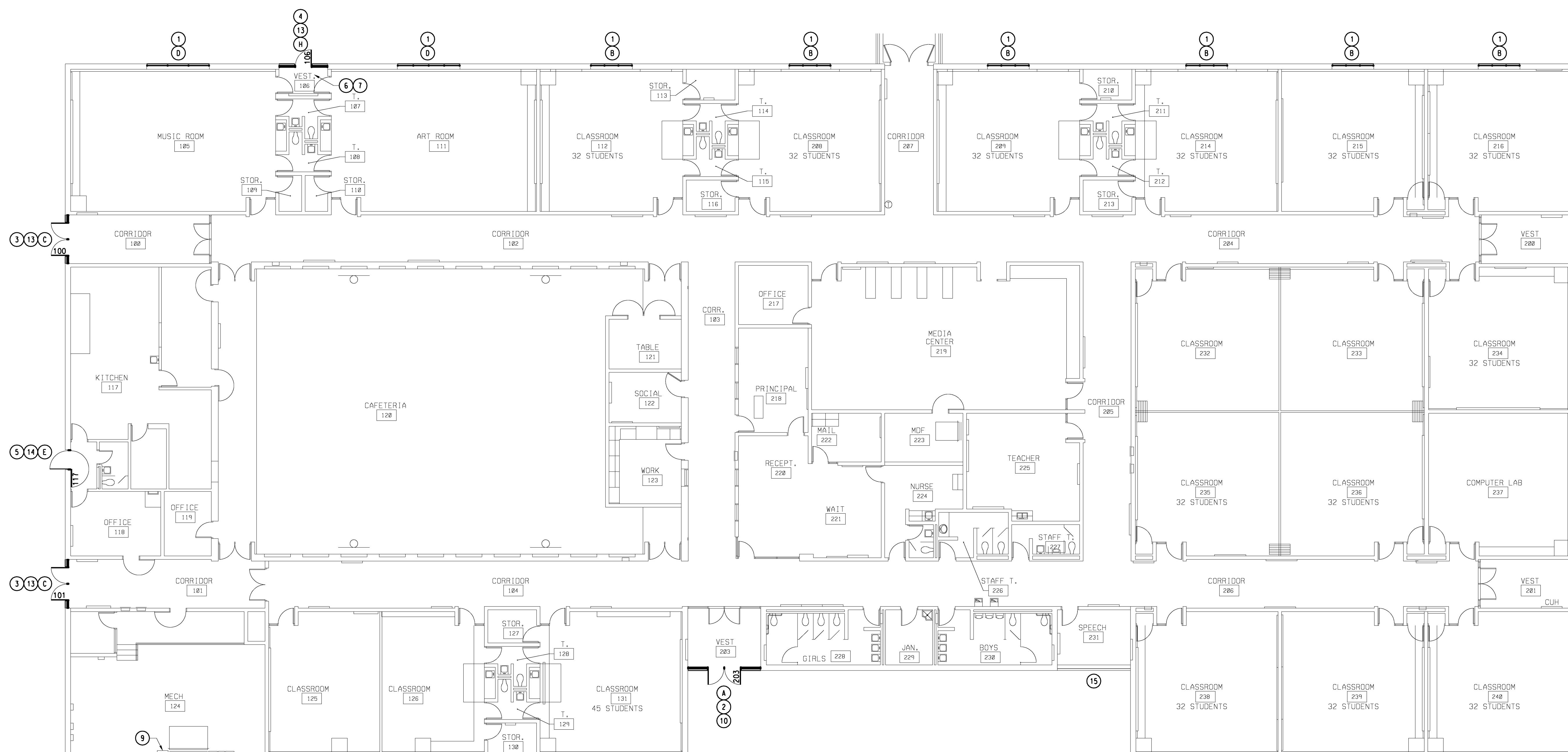
### LEGEND

(A)(B)(C) ETC. DENOTES NEW FRAME TYPE

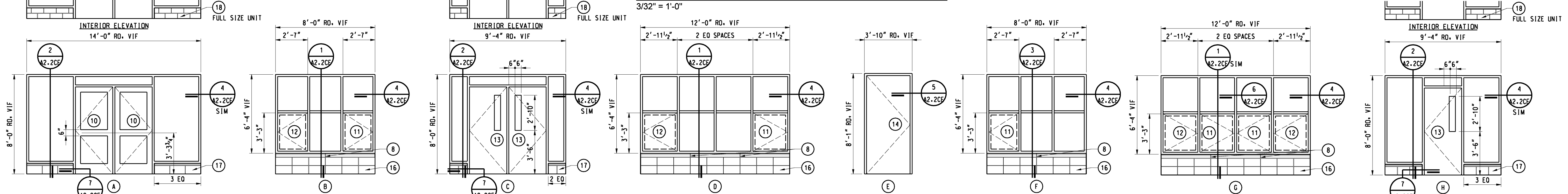
### KEYNOTES

NOTE: NOT ALL KEYNOTES MAY BE USED

- 1 REMOVE WINDOW SYSTEM, SEALANT, METAL FLASHING AT BASE; LOWERS AND BLANK-OFF PANELS (MECH 124 ONLY) AND METAL PANELS (CLASSROOM 126 ONLY) (BY OWNER)
- 2 REMOVE STOREFRONT FRAMING SYSTEM, DOORS, HARDWARE AND SEALANT. SALVAGE TWO-WAY COMMUNICATION DEVICE AND LOW VOLTAGE WIRING TO 1" AND ELECTRIC STRIKE (BY OWNER)
- 3 REMOVE STOREFRONT FRAMING SYSTEM AND SEALANT. SALVAGE DOORS AND HARDWARE.
- 4 REMOVE HOLLOW METAL FRAMING SYSTEM, SEALANT, DOORS AND HARDWARE (BY OWNER)
- 5 REMOVE HOLLOW METAL DOOR, FRAME, HARDWARE, WOOD BLOCKING AND SEALANT. SALVAGE AND REINSTALL ALUMINUM SCREEN DOOR.
- 6 REMOVE CARPET
- 7 CARPET (BY OWNER)
- 8 ALIGN 04720 CAST STONE JOINT WITH 04810 GROUND FACE CMU
- 9 ELECTRICAL PANEL TO REMAIN
- 10 08410 ALUMINUM DOOR, 3'-0" x 7'-0" (NOMINAL) WITH HARDWARE SET CE3
- 11 08520 ALUMINUM CASEMENT WINDOW
- 12 08520 ALUMINUM EMERGENCY EGRESS WINDOW
- 13 08220 FRP DOOR, 3'-0" x 7'-0" (NOMINAL) WITH HARDWARE SET CE2 AT DOOR OPENING 106 ONLY. REINSTALL SALVAGED FRP DOORS AND HARDWARE (HOW SET CE1) AT DOOR OPENINGS 100, 101, 200 AND 201.
- 14 08220 FRP DOOR, 3'-6" x 7'-11" (NOMINAL) WITH HARDWARE SET CE4
- 15 EXISTING WINDOW TO REMAIN
- 16 04810 GROUND FACE CMU, STACK BOND COURSING
- 17 04810 GROUND FACE CMU, EQUAL UNITS AS INDICATED
- 18 04810 STRUCTURAL GLAZED FACING TILE, RUNNING BOND COURSING WITH FULL SIZE UNIT INDICATED

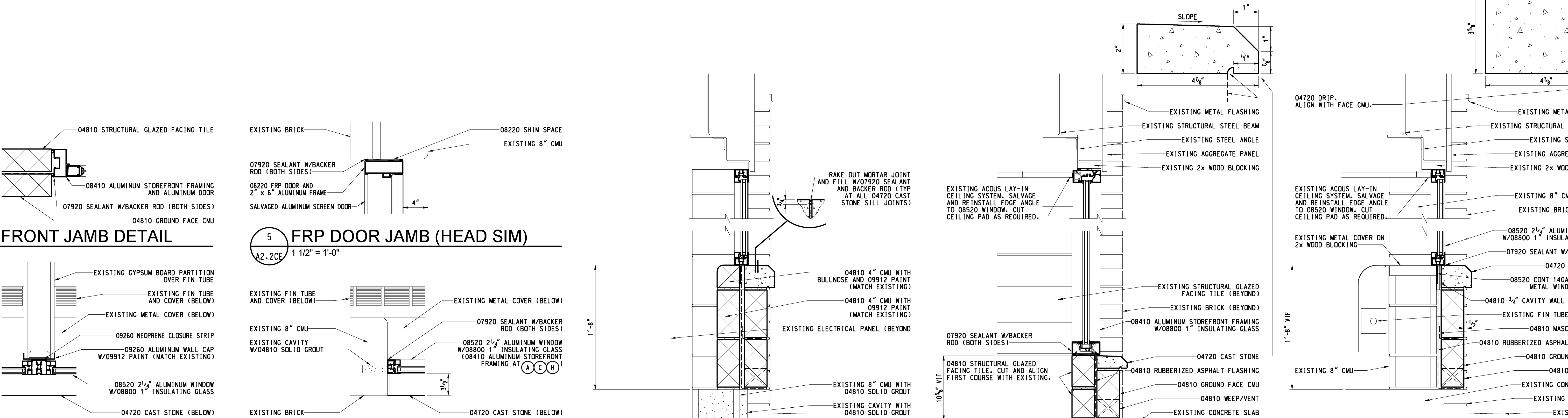


### WINDOW REPLACEMENT PLAN



### FRAME TYPES

1/4" = 1'-0"



Project Title

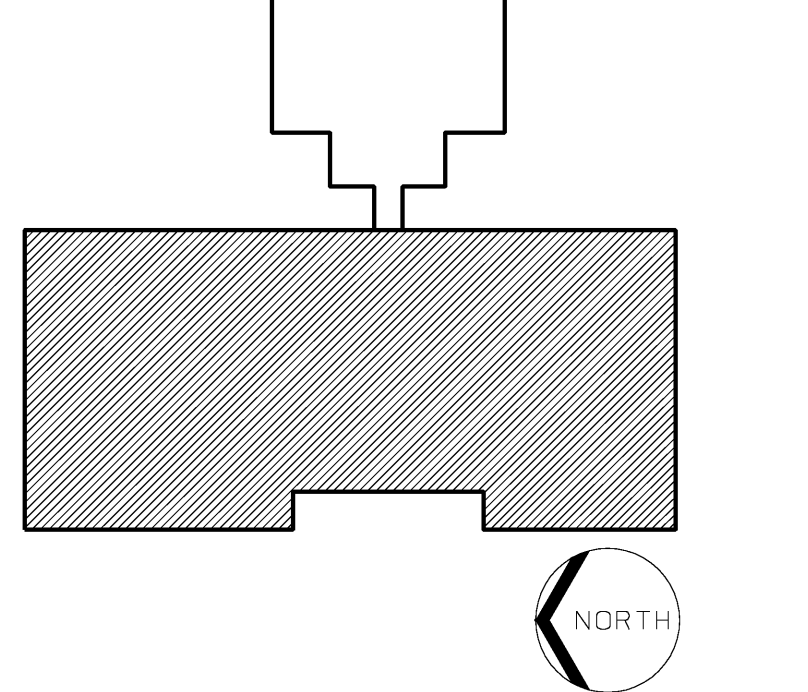


## LINDEN COMMUNITY SCHOOLS

### 2013 Sinking Fund Projects

Linden, Michigan

Key Plan



Project Administrator: Seal:

K. Delzer

Project Designer:

B. Ingham

Project Architect / Engineer:

B. Ingham

Drawn By:

B. Ingham

C.M. Review:

K. Delzer

Approved:

K. Delzer

Drawing Scale:

As Noted

Issue Date: Issued for:

03-11-13 Quality Management Review

03-14-13 Plan Review

03-15-13 Bids

03-28-13 Addendum No 1

© 2013 Integrated Design Solutions, LLC

IDS Drawing Title

## Central Elementary Window Demolition and New Work Plan

IDS Project Number Drawing Number

13101-1000 A2.2CE