

THE COTTAGE at THORNAPPLE
Hastings, MI

PROJ. NO.: 2011-11-021

02/21/12 ISSUED FOR BIDS
03/15/12 ADDENDUM #3

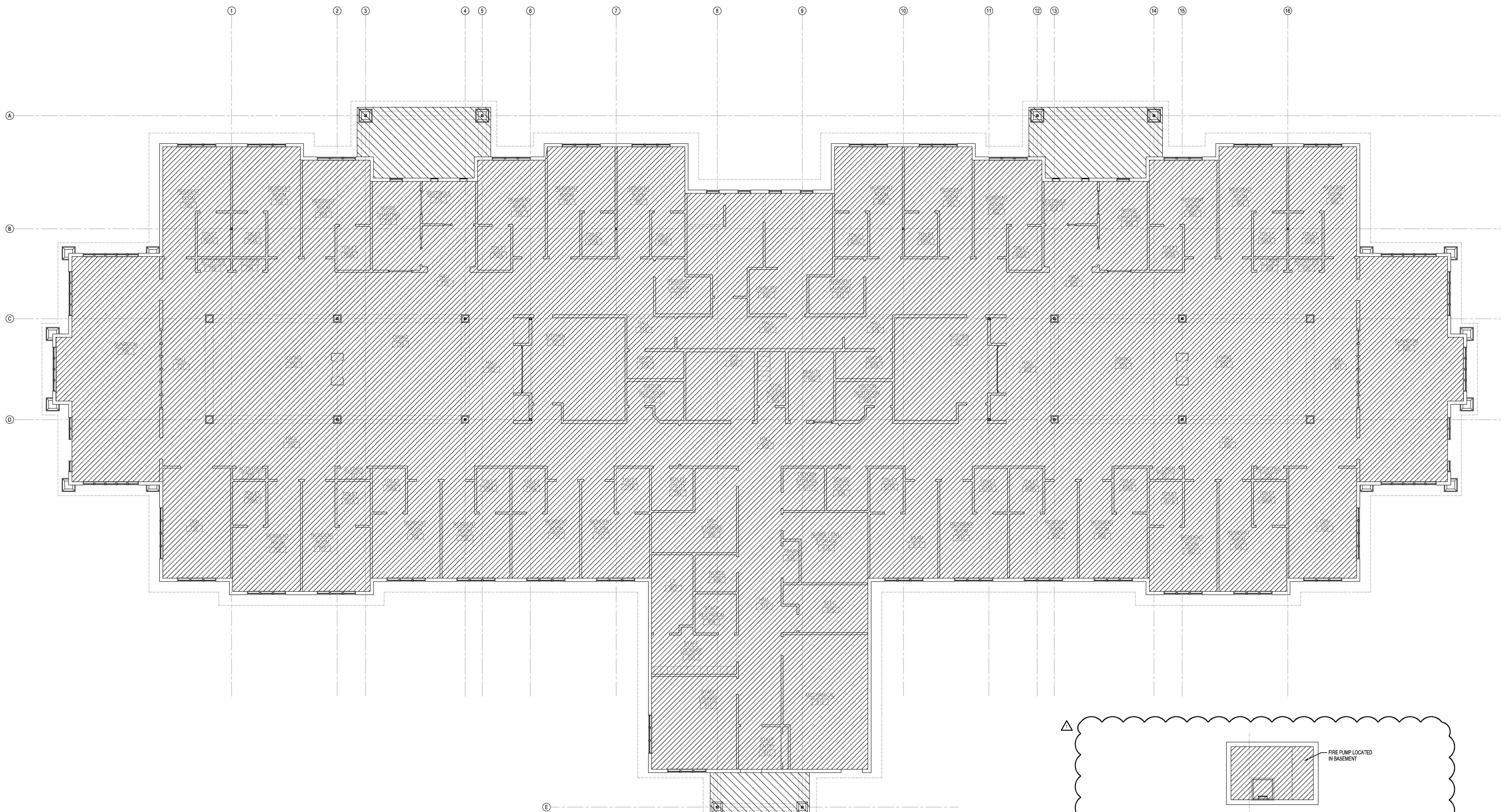
CONSTRUCTION MANAGER
CM CONTRACTING
CIVIL ENGINEER
HURLEY & STEWART
STRUCTURAL ENGINEER
JDH ENGINEERING
MEP ENGINEER
E2W ENGINEERING
2000 SERVICE COMPANY PART
MILLIS & ASSOCIATES



ECKERT WORDELL
ARCHITECTURE • ENGINEERING • INTERIOR DESIGN
161 East Michigan Ave, Suite 200
Kalamazoo, MI 49007-3807
PHONE: 269-368-7313
FAX: 269-368-7300
WEB: www.eckert-wordell.com
© 2011 Eckert Wordell, LLC

FIRE PROTECTION PLAN

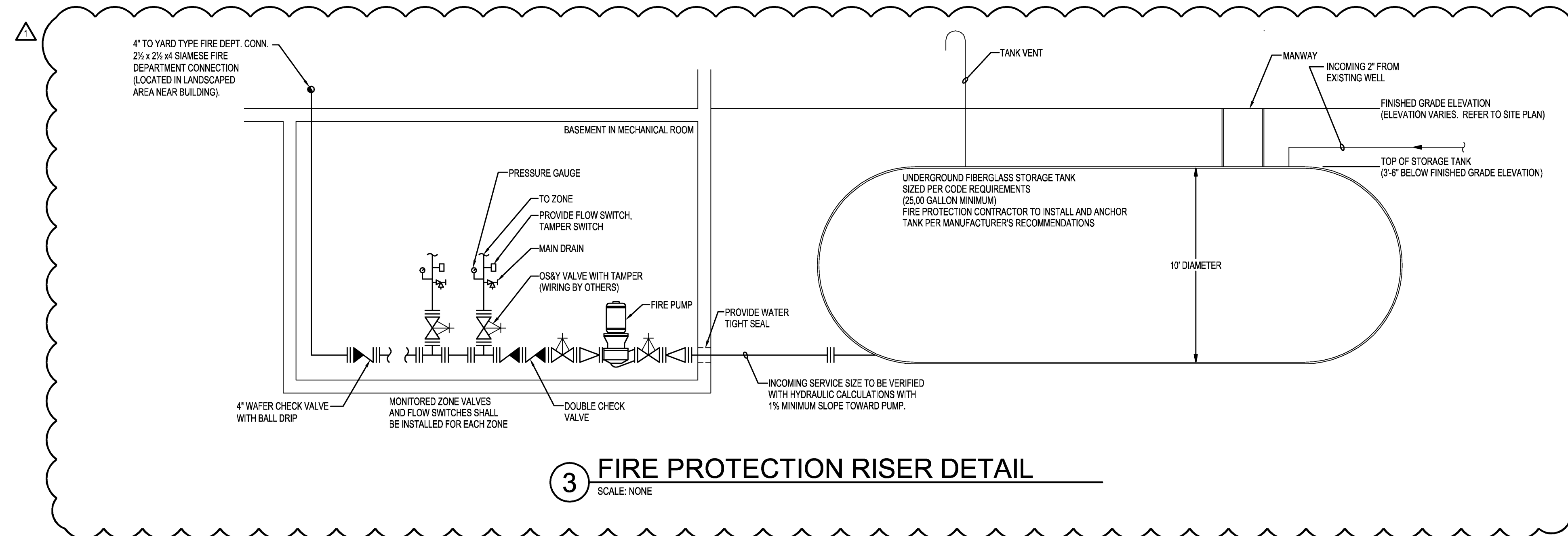
FP110



- FIRE PROTECTION NOTES**
1. FIRE PROTECTION CONTRACTOR TO PROVIDE A COMPLETELY SPRINKLED BUILDING (LIGHT HAZARD), DESIGN FIRE PROTECTION SYSTEMS PER NFPA #13, STATE FIRE MARSHALL AND REQUIREMENTS PER CITY CODE.
 2. BUILDING TO BE PROTECTED WITH A WET SYSTEM. SPRINKLER HEADS TO BE PROTECTED WITH A DRY SYSTEM. THIS INCLUDES ALL REQUIRED STANDPIPES, FIRE PUMPS, STORAGE TANK, FIRE DEPARTMENT CONNECTIONS, AND WATER MAIN.
 3. SPRINKLER HEADS SHALL BE QUICK RESPONSE IN LIGHT HAZARD AREAS.
 4. ALL SPRINKLER HEADS IN FINISHED AREAS TO BE CONCEALED WITH WHITE COVER PLATES, 155°, 1/2" ORIFICE.
 5. HEADS TO BE CENTERED IN AREAS WITH ACOUSTICAL CEILING TILES.
 6. EXPOSED AREAS TO HAVE BRASS UPRIGHT HEADS.
 7. COORDINATE FIRE DEPARTMENT CONNECTION WITH THE CITY OF HASTINGS.
 8. EXISTING CONDITIONS TO BE FIELD VERIFIED.
 9. COORDINATE FIRE PROTECTION LINES WITH LIGHTS, DUCTS, CEILING GRIDS, BULKHEADS, ETC.
 10. COORDINATE FIRE PROTECTION REQUIREMENTS WITH OWNERS INSURANCE COMPANY.
 11. FIRE PUMP AND STORAGE TANK TO BE SIZED PER NFPA - EXISTING WELL TO BE UTILIZED.
 12. FIRE PROTECTION SYSTEM CONTRACTOR TO BE RESPONSIBLE FOR PIPING FROM STORAGE TANK TO PUMP IN BASEMENT INCLUDING EXCAVATION.

1 FIRE PROTECTION PLAN
SCALE: 1/8"=1'-0"

2 BASEMENT FIRE PROTECTION PLAN
SCALE: 1/8"=1'-0"



3 FIRE PROTECTION RISER DETAIL
SCALE: NONE