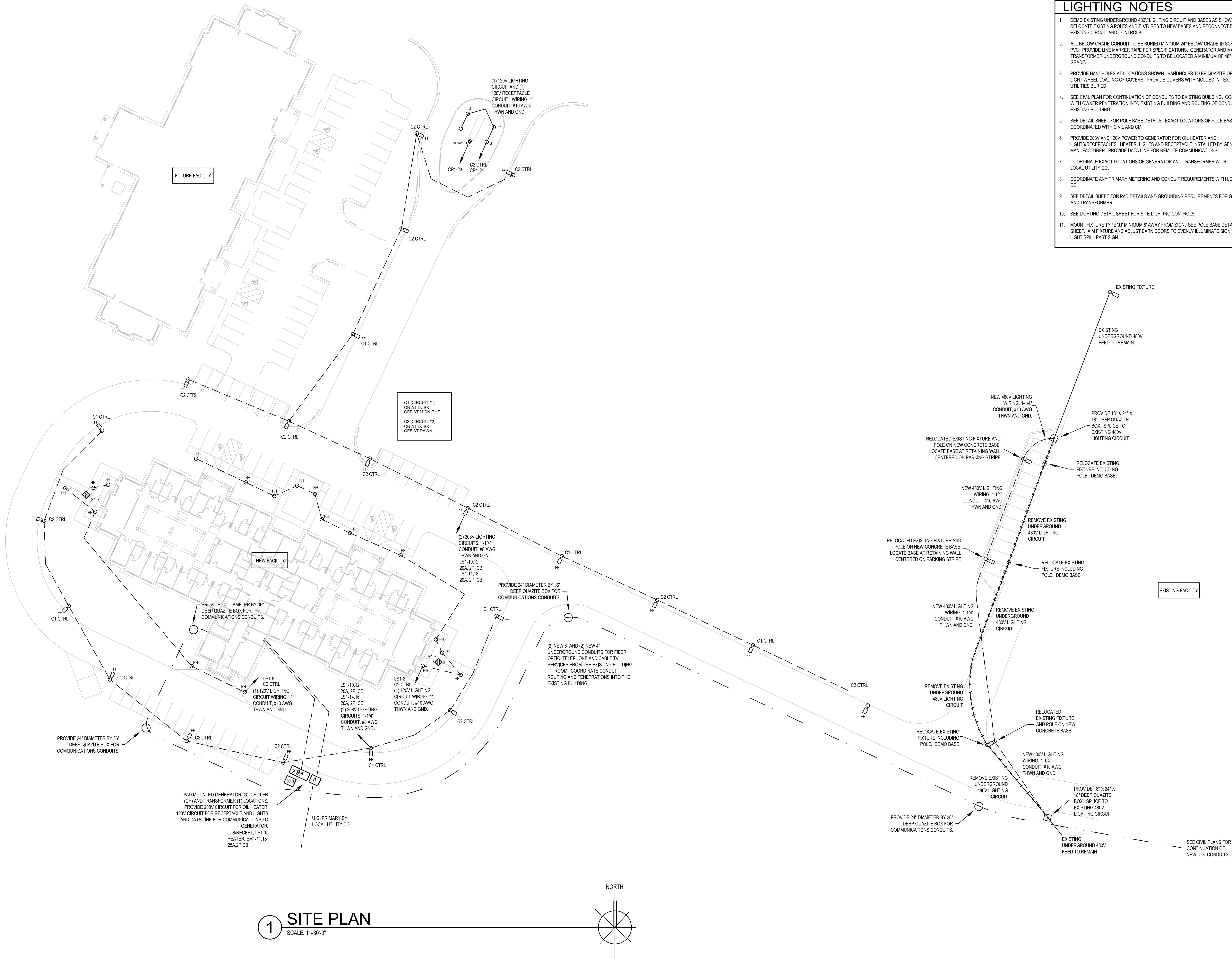


GENERAL NOTES

- A. IT IS UNDERSTOOD AND AGREED BY THE INSTALLER THAT WORK HEREIN DESCRIBED SHALL BE COMPLETE IN EVERY DETAIL, EVEN THOUGH EVERY ITEM INVOLVED IS NOT PARTICULARLY MENTIONED. INSTALLER SHALL BE HELD TO PROVIDE ALL LABOR AND MATERIALS NECESSARY FOR THE WORK INTENDED AND DESCRIBED FOR A COMPLETE AND OPERATIONAL SYSTEM. SUCH MATERIALS SHALL INCLUDE, BUT ARE NOT LIMITED TO, CONDUIT, FITTINGS, COVERPLATES, WIRING, BREAKERS, CONTROL DEVICES, LIGHTING ACCESSORIES, ETC. THIS ALSO INCLUDES EQUIPMENT REQUIRED BY STATE AND LOCAL CODES.
- B. CONTRACTOR IS RESPONSIBLE TO COORDINATE ALL EQUIPMENT AND MATERIALS WITH ALL OTHER TRADES.

LIGHTING NOTES

1. DEMO EXISTING UNDERGROUND 480V LIGHTING CIRCUIT AND BASES AS SHOWN. RELOCATE EXISTING POLES AND FIXTURES TO NEW BASES AND RECONNECT BACK INTO EXISTING CIRCUIT AND CONTROLS.
2. ALL BELOW GRADE CONDUIT TO BE BURIED MINIMUM 24" BELOW GRADE IN SCHEDULE 40 PVC. PROVIDE LINE MARKER TAPE PER SPECIFICATIONS. GENERATOR AND MAIN TRANSFORMER UNDERGROUND CONDUITS TO BE LOCATED A MINIMUM OF 48" BELOW GRADE.
3. PROVIDE HANDHOLES AT LOCATIONS SHOWN. HANDHOLES TO BE QUARTZITE OR EQUAL WITH LIGHT WHEEL LOADING OF COVERS. PROVIDE COVERS WITH MOLDED IN TEXT FOR UTILITIES BURIED.
4. SEE CIVIL PLAN FOR CONTINUATION OF CONDUITS TO EXISTING BUILDING. COORDINATE WITH OWNER PENETRATION INTO EXISTING BUILDING AND ROUTING OF CONDUITS WITHIN EXISTING BUILDING.
5. SEE DETAIL SHEET FOR POLE BASE DETAILS. EXACT LOCATIONS OF POLE BASES TO BE COORDINATED WITH CIVIL AND CM.
6. PROVIDE 208V AND 120V POWER TO GENERATOR FOR OIL HEATER AND LIGHTS/RECEPTACLES. HEATER LIGHTS AND RECEPTACLE INSTALLED BY GENERATOR MANUFACTURER. PROVIDE DATA LINE FOR REMOTE COMMUNICATIONS.
7. COORDINATE EXACT LOCATIONS OF GENERATOR AND TRANSFORMER WITH CIVIL, CM AND LOCAL UTILITY CO.
8. COORDINATE ANY PRIMARY METERING AND CONDUIT REQUIREMENTS FOR GENERATOR AND TRANSFORMER.
9. SEE DETAIL SHEET FOR PAD DETAILS AND GROUNDING REQUIREMENTS FOR GENERATOR AND TRANSFORMER.
10. SEE LIGHTING DETAIL SHEET FOR SITE LIGHTING CONTROLS.
11. MOUNT FIXTURE TYPE 'U' MINIMUM 8' AWAY FROM SIGN. SEE POLE BASE DETAIL ON DETAIL SHEET. AIM FIXTURE AND ADJUST BARN DOORS TO EVENLY ILLUMINATE SIGN WITH NO LIGHT SPILL PAST SIGN.



THE COTTAGE at THORNAPPLE

Hastings, MI

PROJ. NO.: 2011-11-021

- 02/21/12 ISSUED FOR BIDS
03/05/12 ADDENDUM #1
- CONSTRUCTION MANAGER
CM CONTRACTING
- CIVIL ENGINEER
HURLEY & STEWART
- STRUCTURAL ENGINEER
JDH ENGINEERING
- MEEP ENGINEER
E2W ENGINEERING
- FOOD SERVICE CONSULTANT
MILLIS & ASSOCIATES

ECKERT WORDELL
ARCHITECTURE • ENGINEERING • INTERIOR DESIGN

161 East Michigan Ave., Suite 200
Kalamazoo, MI 49007-3907
PHONE: 269.388.7313
FAX: 269.388.7330
WEB: www.eckert-wordell.com

© 2011 Eckert Wordell, LLC

ELECTRICAL SITE
PLAN

E100