



Wilkie & Zanley

ENGINEERS • ARCHITECTS • CONSULTANTS • PROJECT MANAGERS

"A Sidcock Company"

Wyandotte Office
4242 Biddle Avenue
Wyandotte, Michigan 48192
Ph: (734)285-1924 • Fax: (734)285-2833

Main Headquarters
43155 Main Street, Suite 2310
Novi, Michigan 48375
Ph: (248)349-4500 • Fax: (248)349-1429

West Michigan Office
379 W. Western Avenue, Suite 200
Muskegon, Michigan 49440
Ph: (231)722-4900 • Fax: (231)722-4955

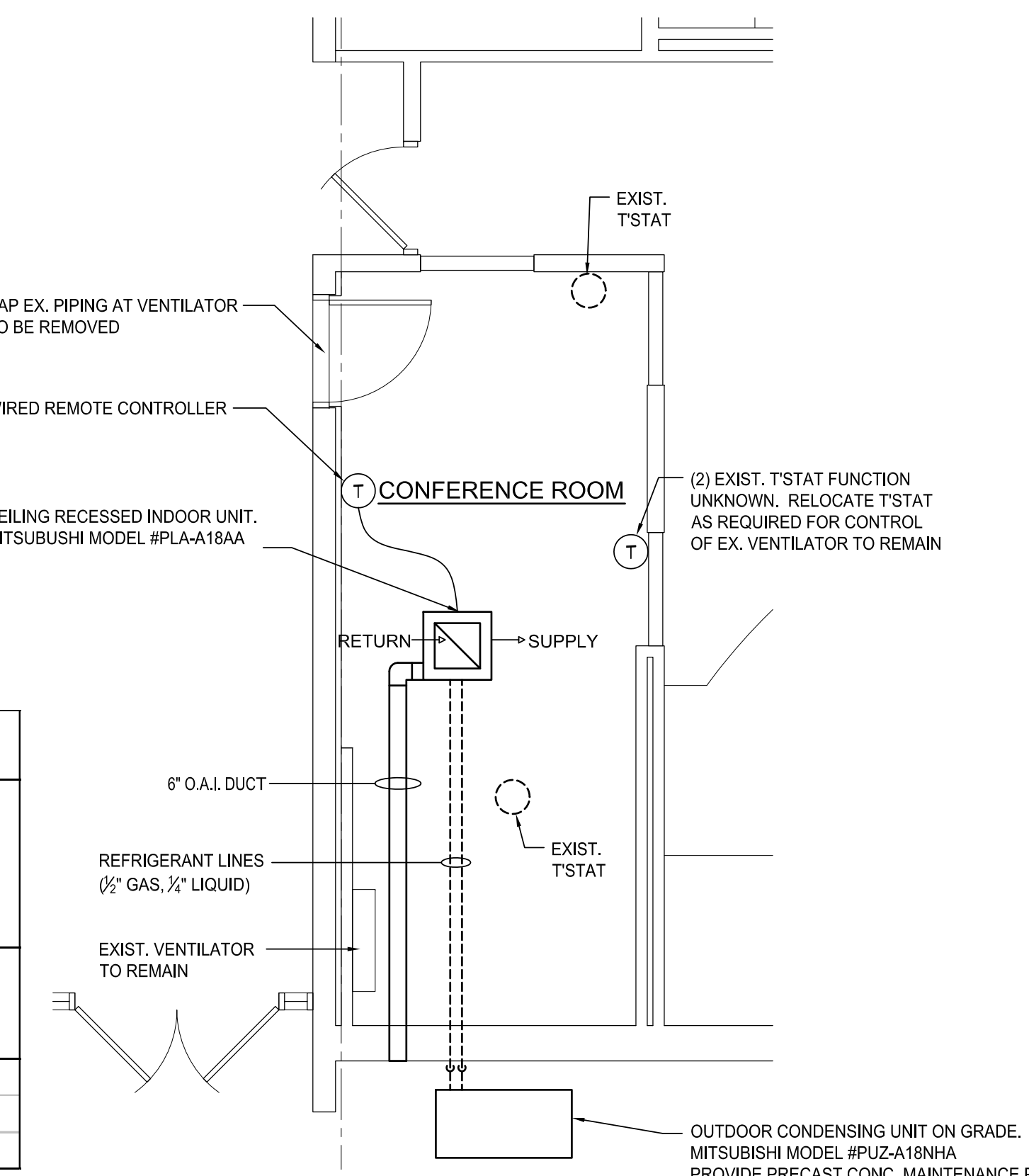
www.sidcockgroup.com

Key Plan: NO SCALE

UNIT VENTILATOR SCHEDULE															
MARK	LOCATION	CFM	ESP (IN. W.C.)	HP	HEATING CAPACITY (MBH)	EAT (°F)	LAT (°F)	GPM	EWT (°F)	LWT (°F)	CABINET DIMENSIONS	ELECTRICAL		DESIGN BASIS	REMARKS
												VOLTAGE	PHASE	MAKE	
HUV-1	CLASSROOM 29	1,000	0.25	1/3	65.0	55.0	115.0	3.0	200	160	76 x 36 x 16 5/8	208	3	TRANE HUV1001	HORIZONTAL UNIT VENTILATOR
VUV-1	CLASSROOM 29	750	0.25	1/4	49.0	55.0	115.0	2.5	200	160	64 x 30 x 16 5/8 OR 64 x 30 x 21 7/8 OR 64 x 30 x 16 5/8 OR 64 x 30 x 21 7/8	208	3	TRANE FEBB0801M	VERTICAL UNIT VENTILATOR

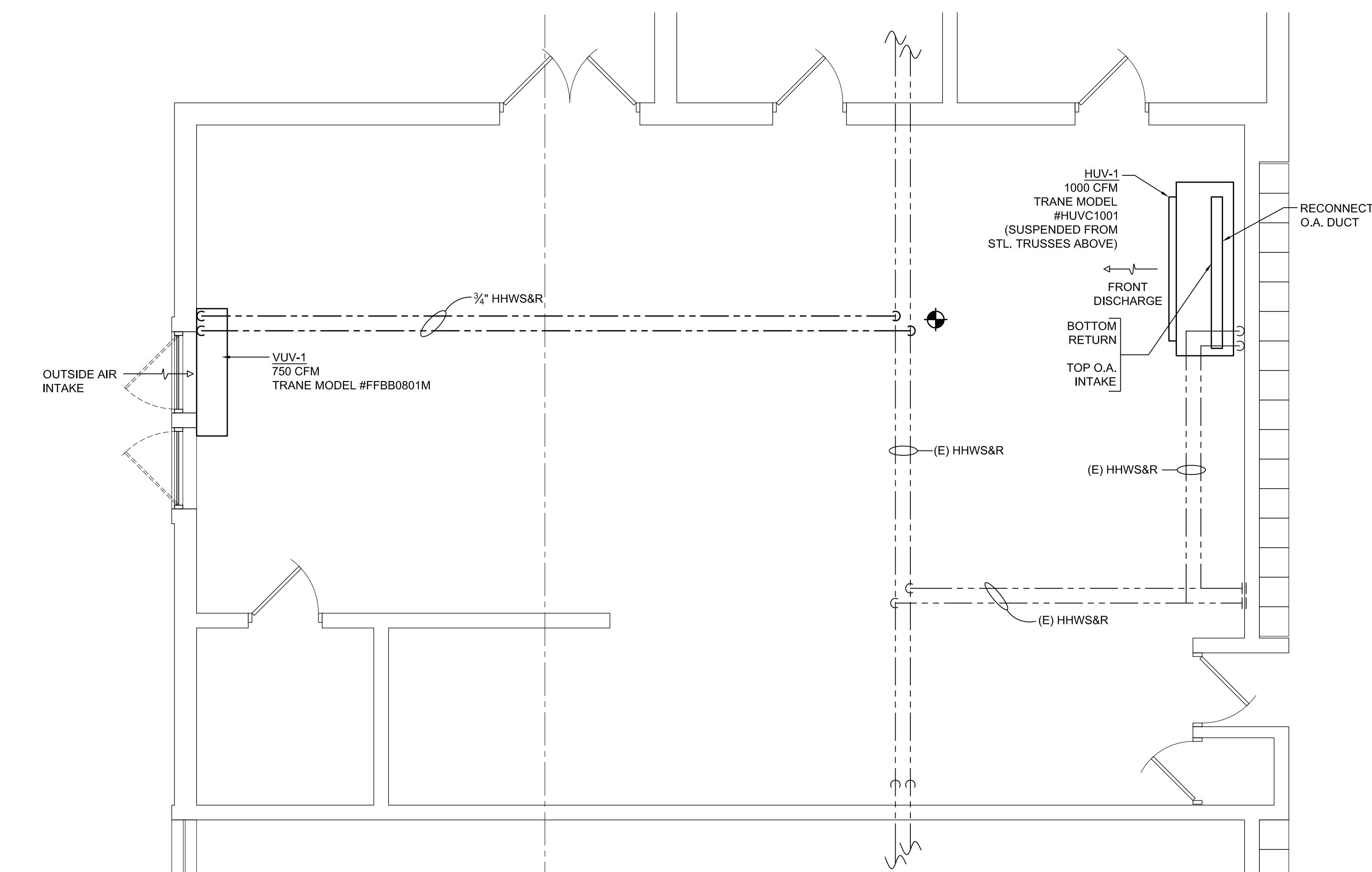
AIR CONDITIONING UNIT SCHEDULE (HEAT PUMP - SPLIT SYSTEM)																														
INDOOR UNIT (AC-1)																	OUTDOOR AIR-COOLED CONDENSING UNIT (CU-1)										REMARKS			
TAG	SERVING	LOCATION	MIN. O.A. (CFM)	AIR FLOW (CFM)	ESP	MOTOR (FLA)	ELEC	EAT DB (°F)	EAT WB (°F)	LAT DB (°F)	LAT WB (°F)	TOTAL (MBH)	SENS (MBH)	FILTER TYPE	UNIT DIMENSIONS (W x D x H)	PANEL DIMENSIONS (W x D x H)	WEIGHT	DESIGN BASIS	TAG	NO. OF COMPR.	COMPR. RLA	REFRIG. TYPE	NO. OF COND. FANS	COND. FAN AIR FLOW	FAN MOTOR (FLA)	ELEC		DIMENSIONS (W x D x H)	WEIGHT	DESIGN BASIS
AC-1	CONFERENCE ROOM	CEILING	100	500	0.1	0.79	208/1/60	80.0	67.0	56.0	55.0	18	16.2	WASHABLE	33 1/16 x 33 1/16 x 10 3/16	37 3/8 x 37 3/8 x 1 3/16	11 LBS	MITSUBISHI PLA-A18AA	CU-1	1	12	R-410A	1	1,200	0.35	208/1/60	32 x 12 x 24	100 LBS	MITSUBISHI PUZ-A18NHA	NOTES 1 THRU 3

NOTE 1: CONNECT 3/4" DRAIN (INDOOR UNIT) TO THE NEAREST FLOOR DRAIN OR EXTEND DRAIN OUTSIDE THE BUILDING.
NOTE 2: REFRIGERANT LINE SIZES: GAS - 1/2" OD, LIQUID LINE - 1/4" OD
NOTE 3: HEATING CAPACITY: 19 MBH



PROPOSED HVAC PLAN (SEE SHEET A-103 FOR DEMO INFO.)

2 PARTIAL LARGE SCALE PLANS- AREA 4
A-101 1/4"=1'-0"



PROPOSED HVAC PLAN (SEE SHEET A-103 FOR DEMO INFO.)

1 PARTIAL LARGE SCALE PLANS- AREA 5
A-101 1/4"=1'-0"

Client: NORTHVILLE PUBLIC SCHOOLS

Project: COOKE SCHOOL MISCELLANEOUS RENOVATIONS

21200 TAFT RD. NORTHVILLE, MICHIGAN 48167
Seat:

Date: 05-15-2012 Issued For: PROGRESS
05-21-2012 BIDDING

Drawn: JGW
Checked: DMZ
Approved: DMZ

Sheet Title: PARTIAL LARGE SCALE HVAC PLANS AREAS 4 & 5

Project Number: 312081

Sheet Number: M-101

THE MATERIAL IS THE EXCLUSIVE PROPERTY OF SIDCOCK GROUP, INC. AND CANNOT BE REPRODUCED, COPIED, OR USED IN ANY MANNER WITHOUT THE WRITTEN CONSENT OF SIDCOCK GROUP, INC. © 2011

F:\2012\312081 Cooke Junior High School\CAD Drawings\312081_C_M-101.dwg Thu, 17 May 2012 - 1:15pm