



Wilkie & Zanley

ENGINEERS • ARCHITECTS • CONSULTANTS • PROJECT MANAGERS

"A Siodock Company"

Wyandotte Office
4242 Biddle Avenue
Wyandotte, Michigan 48192
Ph: (734)285-1924 • Fax: (734)285-2833

Main Headquarters
43155 Main Street, Suite 2310
Novi, Michigan 48375
Ph: (248)349-4500 • Fax: (248)349-1429

West Michigan Office
379 W. Western Avenue, Suite 200
Muskegon, Michigan 49440
Ph: (231)722-4900 • Fax: (231)722-4955

www.siodockgroup.com

Key Plan: NO SCALE

Client:
NORTHVILLE PUBLIC SCHOOLS

Project:
COOKE SCHOOL
MISCELLANEOUS
RENOVATIONS

21200 TAFT RD.
NORTHVILLE, MICHIGAN 48167
Seat:

Date: 05-15-2012 Issued For: PROGRESS
05-21-2012 BIDDING

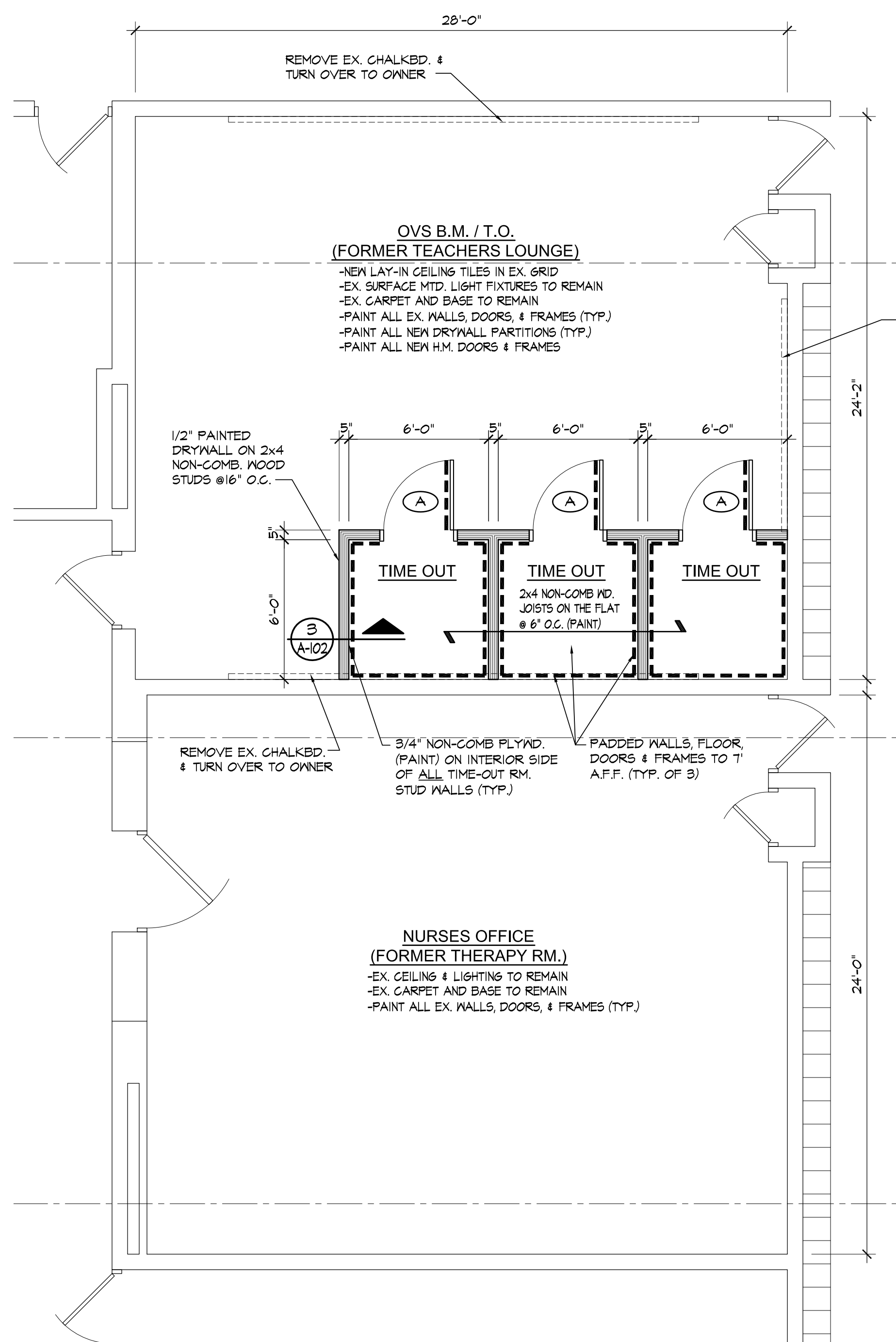
Drawn: JGW
Checked: DMZ
Approved: DMZ

Sheet Title:
PARTIAL LARGE SCALE FLOOR PLANS, DEMO. PLANS & REFLECTED CEILING PLANS AREAS 1, 2 & 3

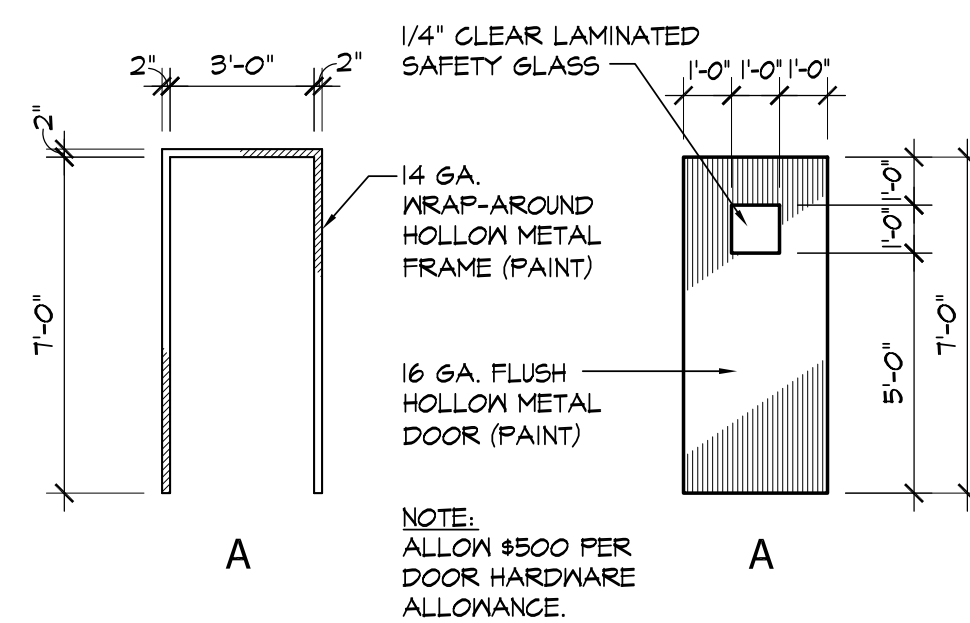
Project Number: 312081

Sheet Number: **A-102**

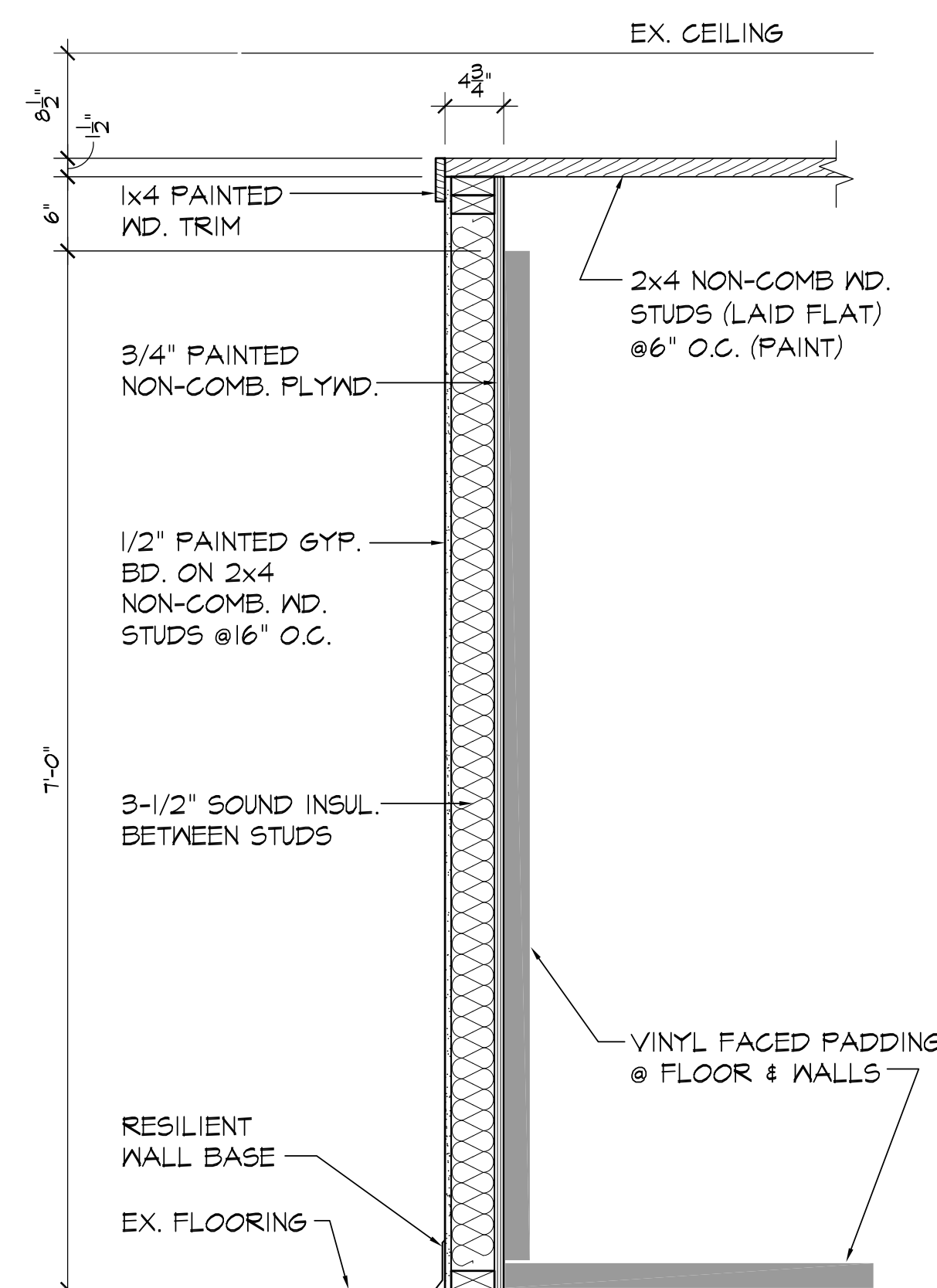
THE MATERIALS & THE EXCLUSIVE PROPERTY OF SIODOCK GROUP, INC. AND CONSULTING ENGINEERS, ARCHITECTS, OR DESIGN ENGINEERS WITHOUT THE WRITTEN CONSENT OF SIODOCK GROUP, INC. © 2012



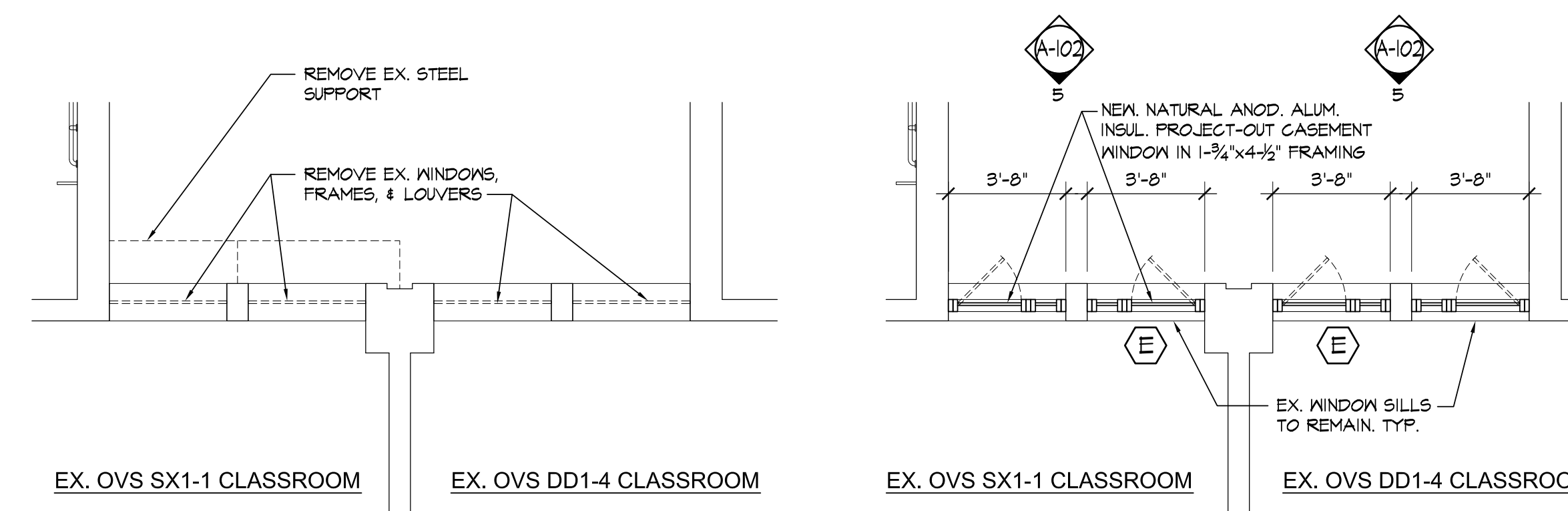
1 PARTIAL LARGE SCALE PLAN- AREA 1
1/4"=1'0"



DOOR & FRAME TYPE A
1/4"=1'-0"



3 WALL SECTION @ TIME OUT RMS.
1"=1'0"

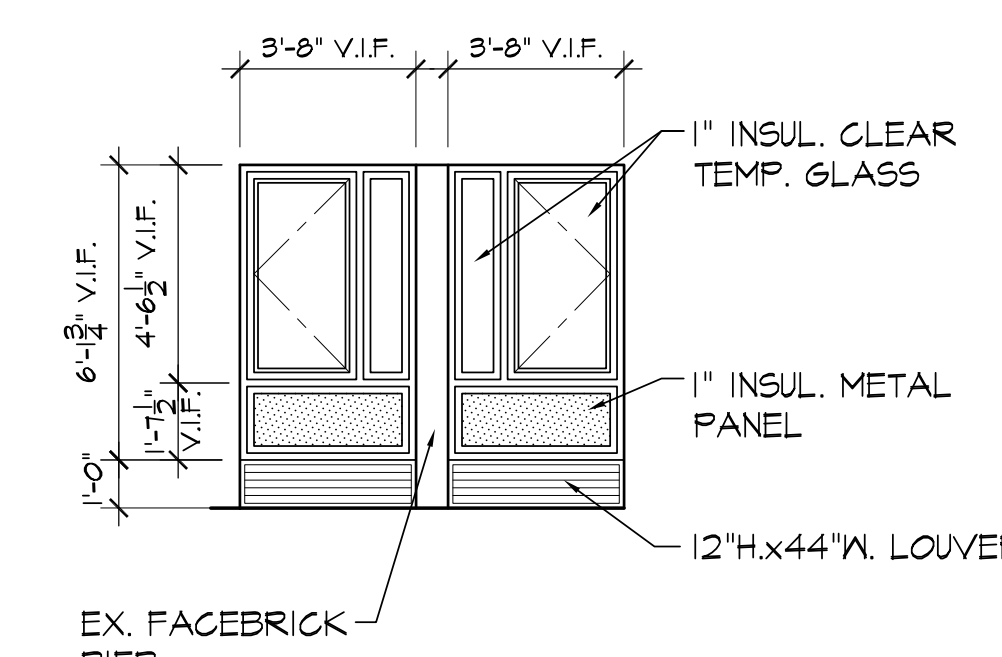


EXISTING FLOOR PLAN- DEMO.

PROPOSED FLOOR PLAN

E DENOTES EMERGENCY EGRESS WINDOW

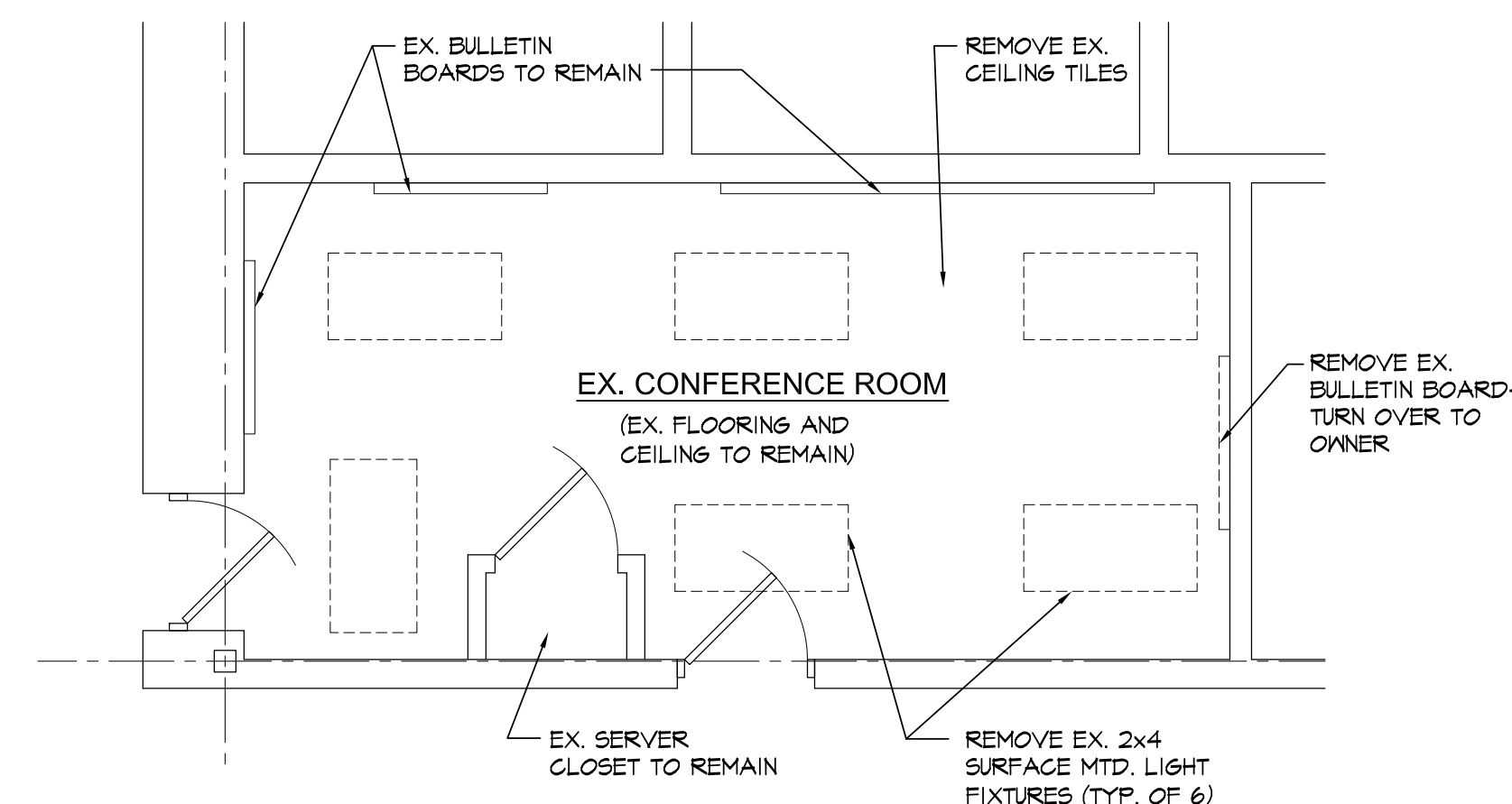
4 PARTIAL LARGE SCALE PLANS- AREA 3
1/4"=1'0"



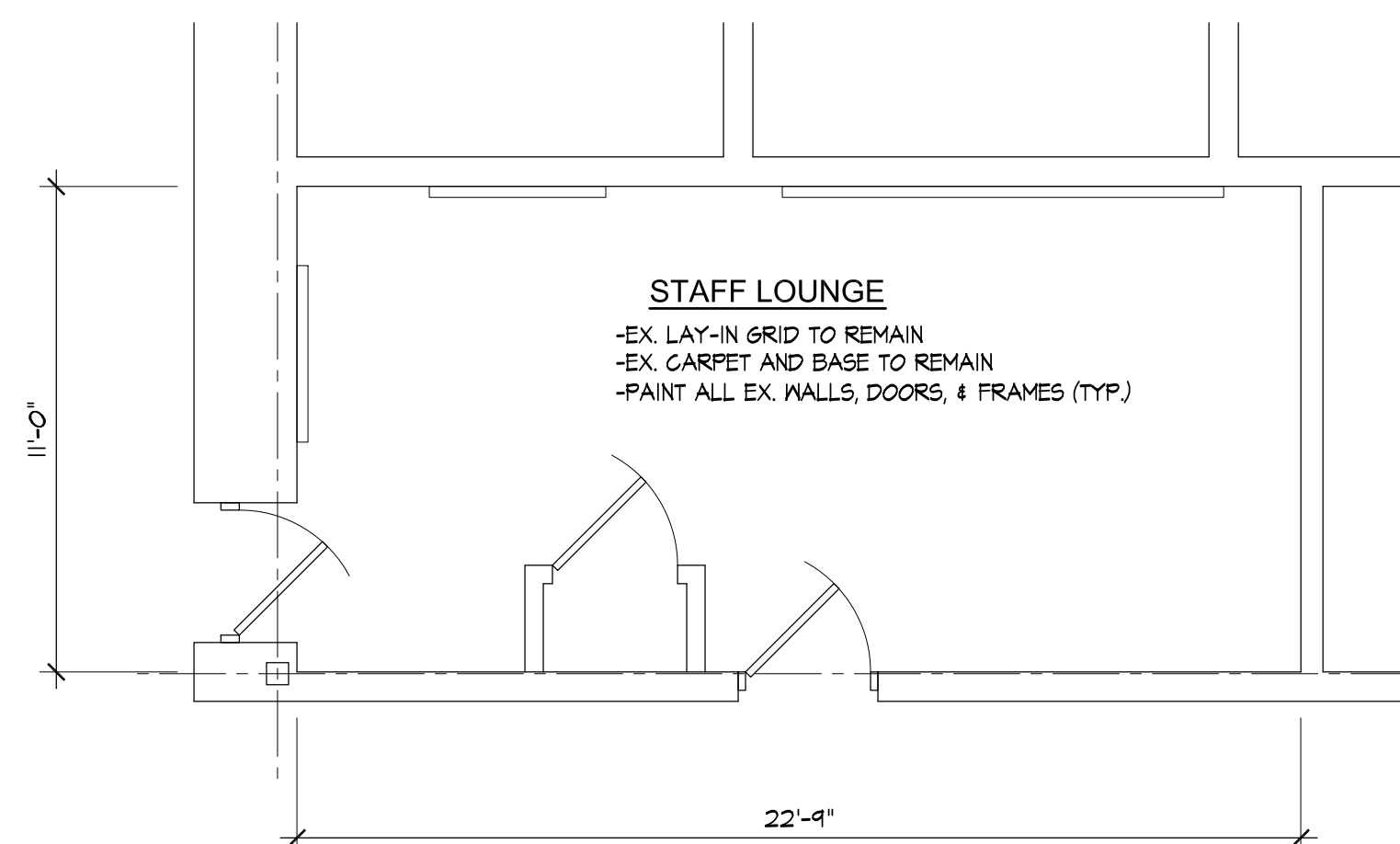
5 TYP. WINDOW ELEVATION
1/4"=1'0"

WINDOW SPECIFICATION
KAWNEER 8225TL, ISOLOCK THERMAL BREAK, OUTSWING CASEMENT AND FIXED WINDOW OR EQUAL. HEAVY COMMERCIAL GRADE C-HC90 / C-AW90 PROVIDE STANDARD HARDWARE & EGRESS SIGNAGE. NATURAL ALUM. ANODIZED FINISH.

LOUVER SPECIFICATION
RUSKIN ELF 211D 2" DEEP STATIONARY LOUVER, 6063T5 EXTRUDED ALUM. OR EQUAL. DRAIN GUTTER AT EACH BLADE INSECT SCREEN. NATURAL ALUM. ANODIZED FINISH.

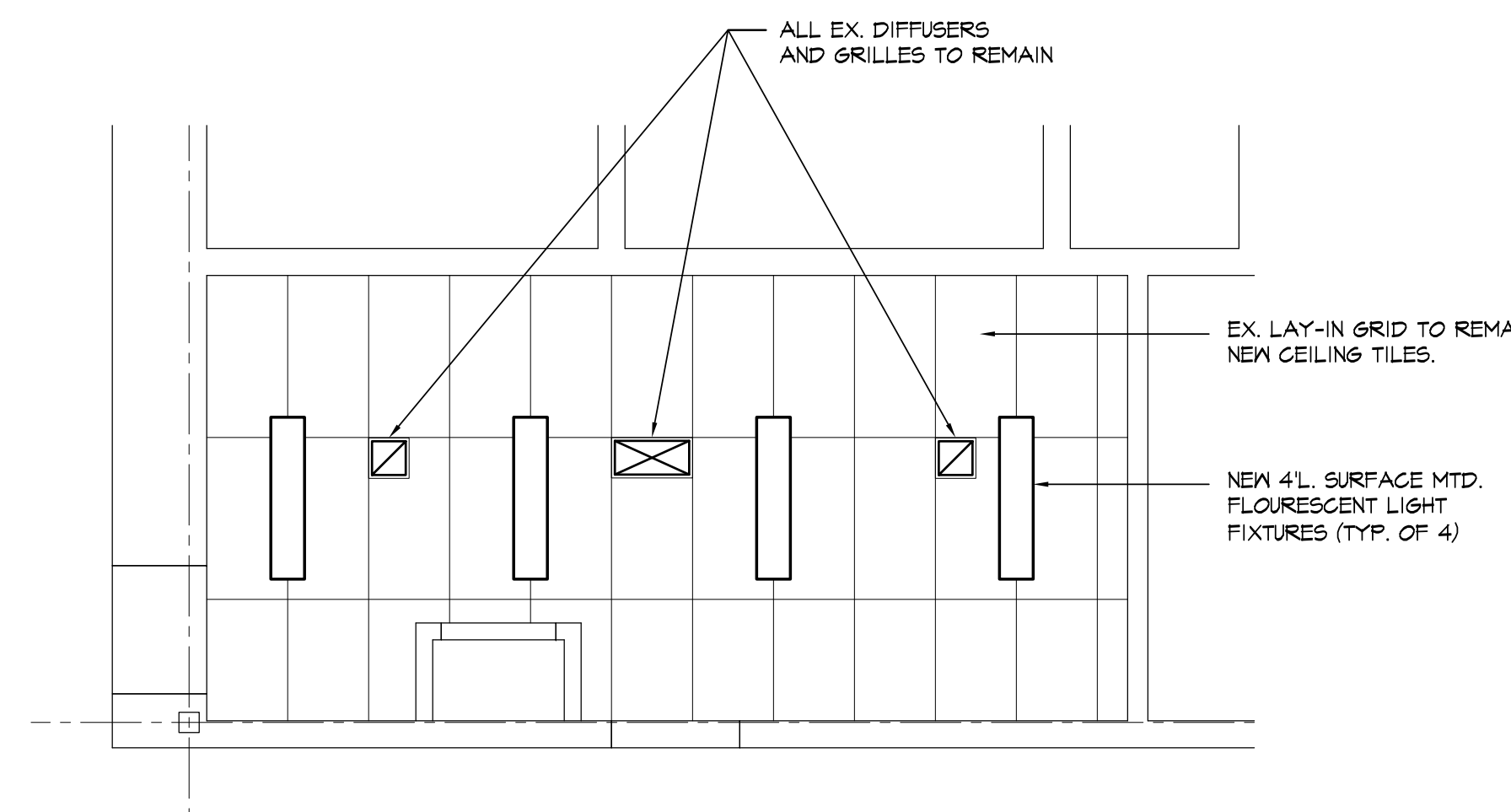


EXISTING FLOOR PLAN- DEMO.



PROPOSED FLOOR PLAN

2 PARTIAL LARGE SCALE PLANS- AREA 2
1/4"=1'0"



REFLECTED CEILING PLAN