



Wilkie & Zanley

ENGINEERS • ARCHITECTS • CONSULTANTS • PROJECT MANAGERS

"A Sldock Company"

Wyandotte Office
4242 Biddle Avenue
Wyandotte, Michigan 48192
Ph: (734)285-1924 • Fax: (734)285-2833

Main Headquarters
43155 Main Street, Suite 2310
Novi, Michigan 48375
Ph: (248)349-4500 • Fax: (248)349-1429

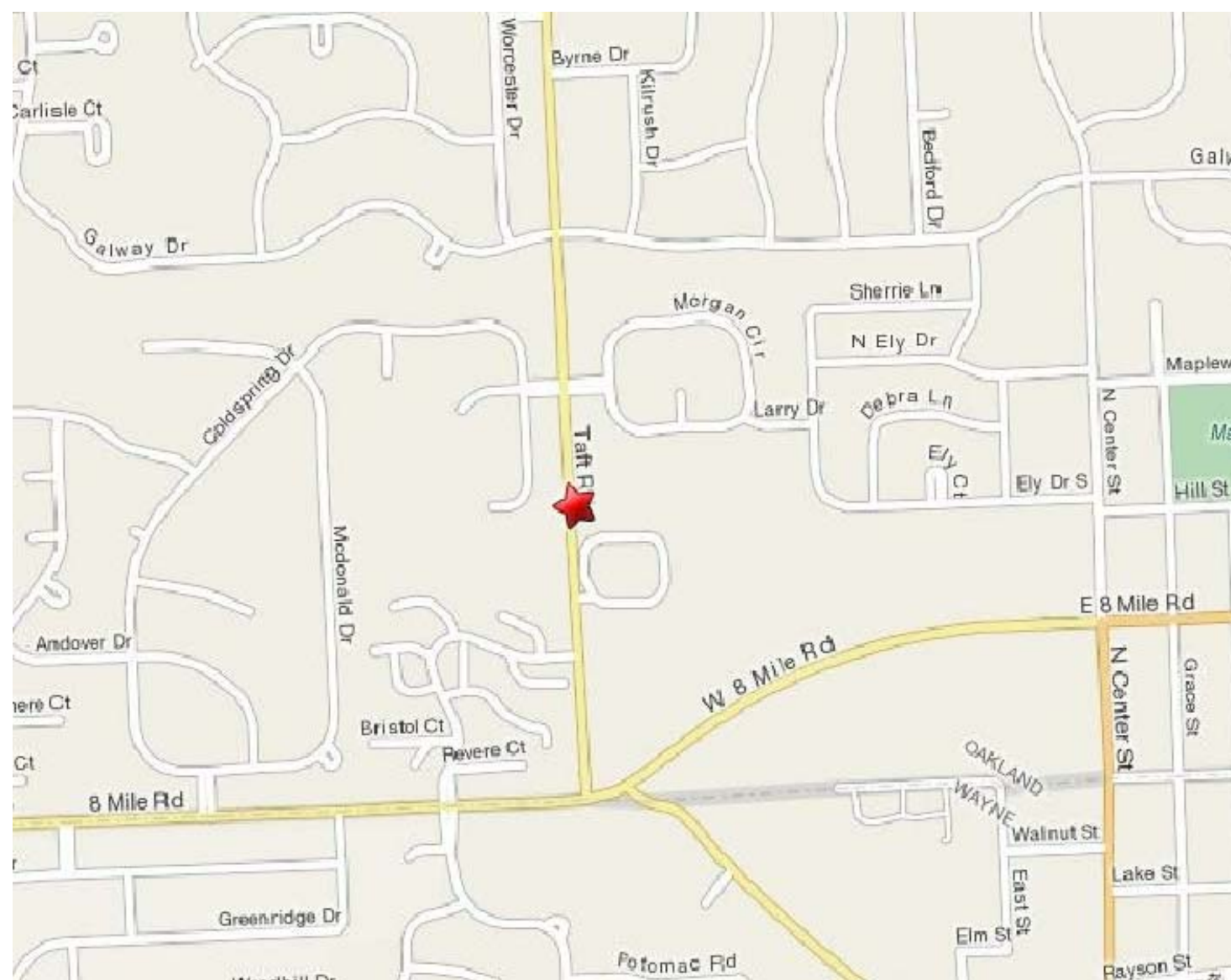
West Michigan Office
379 W. Western Avenue, Suite 200
Muskegon, Michigan 49440
Ph: (231)722-4900 • Fax: (231)722-4955

www.sldockgroup.com

Key Plan: NO SCALE

NORTHVILLE PUBLIC SCHOOLS COOKE SCHOOL MISCELLANEOUS RENOVATIONS

21200 TAFT RD. NORTHVILLE, MICHIGAN 48167



MATERIAL SPECIFICATIONS:

DRYWALL: USG COMPANY - ASTM C36 ; PROVIDE MAXIMUM LENGTHS TO MINIMIZE END TO END JOINTS; 1/2" THICKNESS U.O.N. ; ASTM 840 INCLUDE ALL CORNER BEADS, J-MOLDING, JOINT REINFORCEMENT TAPE & COMPOUND, MOISTURE RESIST. # TYPE X AS NOTED.

ACOUSTICAL CEILING: USG "MILLENNIA CLIMAPLUS" 2' X 4' X 5/8" IV TEBULAR EDGE & MATCHING COMMERCIAL GRID (WHITE).

VINYL BASE: JOHNSONITE 4' COVED, 1/8" THICK - COLOR TO BE SELECTED FROM MANUFACTURERS STANDARD COLORS.

PAINT: 3 COAT WORK - 1 COAT PRIMER / 2 FINISH COATS

CEILING: 5M INTERIOR PROMAR 200 SEMI-GLOSS LATEX.

WALLS: 5M INTERIOR PROMAR 200 SEMI-GLOSS LATEX.

H.M. DOORS / FRAMES: 5M INTERIOR INDUSTRIAL ENAMEL SEMI-GLOSS ALKYD.

COLORS AS SELECTED BY ARCHITECT FROM STANDARD SHIRWIN-WILLIAMS COLORS

H.M. DOORS / FRAMES: STEELCRAFT (GAUGE AS NOTED)

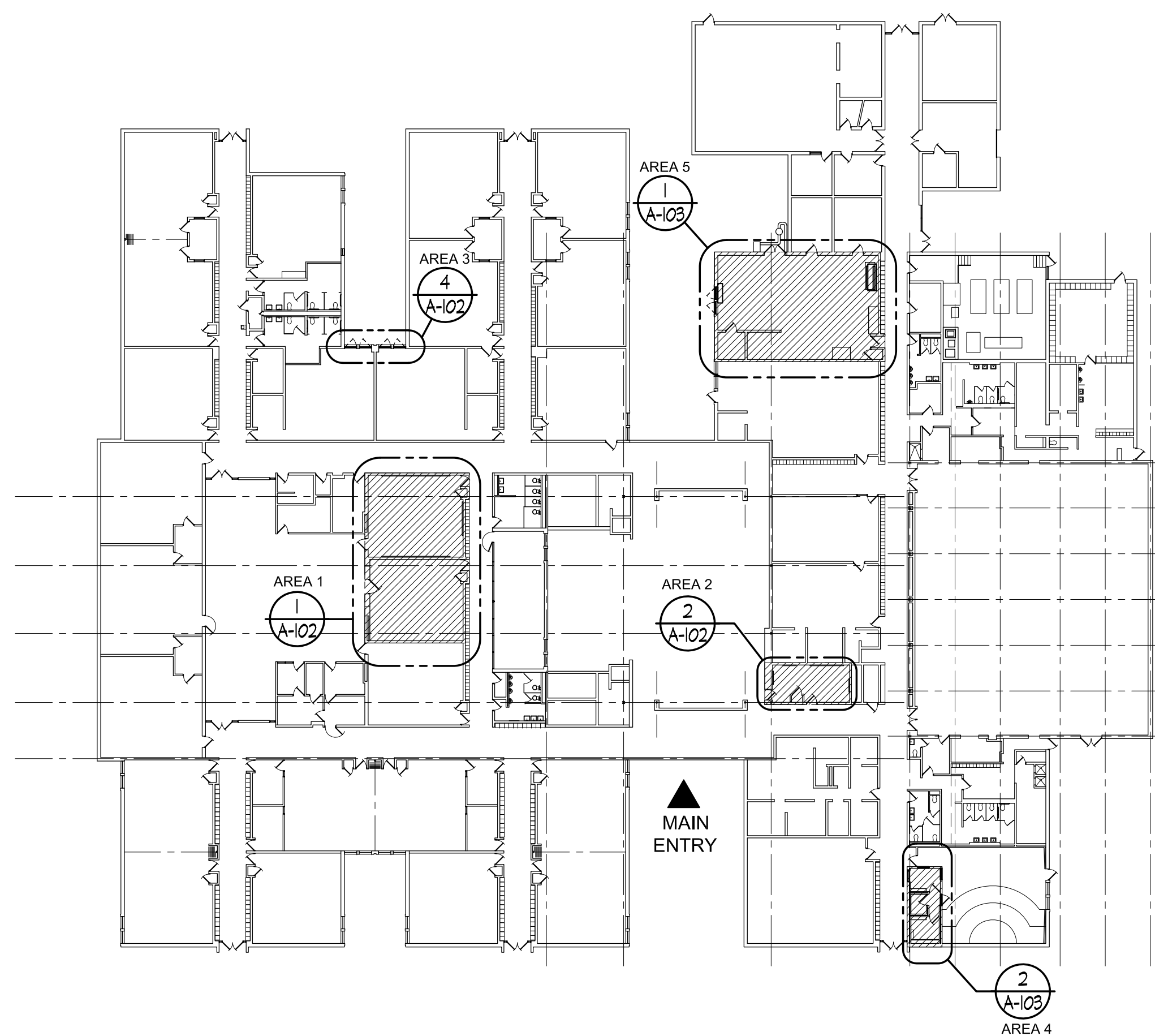
CARPET: ALLOWANCE - \$10/YD. MATERIAL ONLY, WHOLESALE PRICE

- TIME-OUT ROOM PADDED SURFACES:**
1. SURFACE PADDING FOR FLOORS, WALLS, DOORS AND FRAMES.
 - A. PROVIDE CUT-OUTS IN DOOR PADDING FOR VISION LITES.
 2. FIELD APPLIED MF-SILTEC, COVERED WITH BULLET RESISTANT KEVLAR BY DUPONT AND A PROTECTIVE TOP COAT OF HIGH-BUILD LIQUID VINYL (COLOR: WHITE)
 3. PROVIDE SUBMITTALS AND PRODUCT DATA SHEETS FOR FIRE MARSHALL REVIEW.

MANUFACTURER: PADDED SURFACES BY B4E 1-888-8788 OR 911-243-2233

GENERAL NOTES:

1. ALL WORK SHALL BE DONE IN ACCORDANCE WITH ALL LOCAL, STATE, COUNTY CODES/REGULATIONS AND OSHA.
2. TIME IS OF THE ESSENCE OF THE CONTRACT. ALL WORK SHALL PROCEED AS EXPEDITIOUSLY AS POSSIBLE IN A WORKMANLIKE MANNER.
3. CONTRACTORS SHALL VISIT THE PREMISES AND SHALL BE THOROUGHLY ACQUAINTED WITH THE CONDITIONS TO BE ENCOUNTERED.
4. CONTRACTORS SHALL INCLUDE COSTS OF ALL PERMITS & FEES IN BASE BID.
5. CONTRACTORS SHALL PROVIDE ALL LABOR, MATERIALS, INSURANCE, EQUIPMENT, INSTALLATION, TOOLS, TRANSPORTATION, ETC FOR A COMPLETE & PROPER COMPLETION OF THE PROJECT AS INDICATED ON THE DRAWINGS & AS SPECIFIED HEREIN AND/OR AS REQUIRED.
6. ALL SUBSTITUTIONS SHALL BE APPROVED BY ARCHITECT & OWNER PRIOR TO BIDDING.
7. DO NOT SCALE DRAWINGS. USE ONLY DIMENSIONS PROVIDED.
8. GENERAL CONTRACTOR SHALL BE RESPONSIBLE FOR SAFETY ON THIS PROJECT, INCLUDING ALL NECESSARY SIGNS, BARRIERS, & SUPERVISION.
9. GENERAL CONTRACTOR SHALL BE RESPONSIBLE TO PROTECT ADJACENT PRIVATE & PUBLIC PROPERTY FROM DAMAGE DURING CONSTRUCTION.
10. ALL MATERIALS & EQUIPMENT SHALL BE NEW & IN PERFECT CONDITION WHEN INSTALLED & SHALL BE OF THE BEST GRADE & OF THE SAME MANUFACTURE THROUGHOUT FOR EACH CLASS OR GROUP OF EQUIPMENT.
11. GENERAL CONTRACTOR SHALL REMOVE ALL DEBRIS FROM SITE & LEGALLY DISPOSE OF.
12. CONTRACTOR SHALL PROVIDE OWNER WITH COMPLETE SET OF "AS BUILT" DRAWINGS AT COMPLETION OF JOB.
13. CONTRACTOR SHALL PROVIDE A WRITTEN GUARANTEE THAT WILL BE MADE GOOD AT CONTRACTORS OWN EXPENSE FOR ANY IMPERFECTIONS IN MATERIAL AND/OR WORKMANSHIP WHICH MY DEVELOP WITHIN (1) ONE YEAR FROM FINAL ACCEPTANCE. FURTHER, THIS CONTRACTOR SHALL OBTAIN WRITTEN GUARANTEES FROM ALL MANUFACTURERS STATING ON WHAT OPERATING CONDITIONS & PERFORMANCE CAPACITIES EACH EQUIPMENT PIECE GUARANTEE IS BASED.
14. ALL COLOR SELECTIONS SHALL BE BY ARCHITECT.
15. THE LOCATION OF UTILITIES & IMPROVEMENTS INDICATED HEREIN ARE APPROXIMATE ONLY & WERE FROM SOURCES BELIEVED TO BE RELIABLE, BUT NO GUARANTEE IS EXPRESSED OR IMPLIED AS TO LOCATION, TYPE OR EXTENT OF UTILITIES OR IMPROVEMENTS WHETHER OR NOT SAME ARE INDICATED OR SHOWN, & THIS CONTRACTOR SHALL MAKE HIS OWN INVESTIGATION AS TO THE EXTENT OF THESE OR OTHER UTILITIES & SHALL BE RESPONSIBLE FOR PROTECTION & RESTORATION OF SAME IF DAMAGED AS A RESULT OF HIS OPERATIONS.
16. CAULK AROUND ALL OPENINGS & WHERE WOOD OR METAL MEETS MASONRY.
17. REINFORCE WALLS AS REQUIRED TO SUPPORT WALL CABINETS, COUNTERTOPS, GRAB BARS, TOILET ACCESSORIES, ETC.



FIRST FLOOR KEY PLAN
SCALE: 1/32" = 1'-0"

INDEX TO DRAWINGS:

- A-101 TITLE SHEET / FIRST FLOOR KEY PLAN
- A-102 PARTIAL LARGE SCALE FLOOR PLANS, DEMO. PLANS & REFLECTED CEILING PLANS- AREAS 1, 2 & 3
- A-103 PARTIAL LARGE SCALE FLOOR PLANS, DEMO. PLANS & REFLECTED CEILING PLANS- AREAS 4 & 5
- E-101 PARTIAL LARGE SCALE ELECTRICAL PLAN- AREA 1 ELECTRICAL NOTES
- E-102 PARTIAL LARGE SCALE ELECTRICAL PLANS- AREAS 4 & 5
- M-101 PARTIAL LARGE SCALE MECHANICAL PLANS- AREAS 4 & 5
- M-102 MECHANICAL SPECIFICATIONS
- M-103 MECHANICAL SPECIFICATIONS

GENERAL DEMOLITION NOTES:

1. ALL WORK TO BE IN COMPLETE COMPLIANCE WITH ALL APPLICABLE CODES AND REGULATIONS.
2. PROVIDE ALL NECESSARY DUST BARRIERS TO ENSURE A SAFE AND SANITARY BUSINESS ENVIRONMENT FOR THE AREAS WHICH REMAIN OPEN FOR BUSINESS.
3. CONTRACTOR SHALL BE RESPONSIBLE FOR THE COMPLETE REMOVAL AND DISCARDING OF ALL DEMOLITION WASTE INCLUDING ANY UNFORSEEN HAZARDOUS WASTE OR MATERIALS ENCOUNTERED WITHIN THE SCOPE OF THE PROJECT.
4. CONTRACTOR SHALL SHORE-UP AND BRACE AS REQUIRED DURING DEMOLITION TO ENSURE THE COMPLETE STRUCTURAL INTEGRITY OF THE BUILDING DURING AND AFTER COMPLETION OF THE ENTIRE SCOPE OF WORK.
5. GENERAL CONTRACTOR SHALL VERIFY EXISTING CONDITIONS PRIOR TO BIDDING.
6. DEMOLITION IS NOT LIMITED TO JUST THIS SHEET, REVIEW ENTIRE SET FOR COMPLETE SCOPE OF WORK.

Client:
NORTHVILLE PUBLIC SCHOOLS

Project:
COOKE SCHOOL
MISCELLANEOUS
RENOVATIONS

21200 TAFT RD.
NORTHVILLE, MICHIGAN 48167

Seat:

Date	Issued For
05-15-2012	PROGRESS
05-21-2012	BIDDING

Drawn:	JGW
Checked:	DMZ
Approved:	DMZ

Sheet Title:
TITLE SHEET/
FIRST FLOOR KEY PLAN

Project Number: 312081

Sheet Number: A-101

THIS MATERIAL IS THE EXCLUSIVE PROPERTY OF SLDACK GROUP, INC. AND IS NOT TO BE REPRODUCED, COPIED, OR USED IN ANY MANNER WITHOUT THE WRITTEN CONSENT OF SLDACK GROUP, INC. © 2011