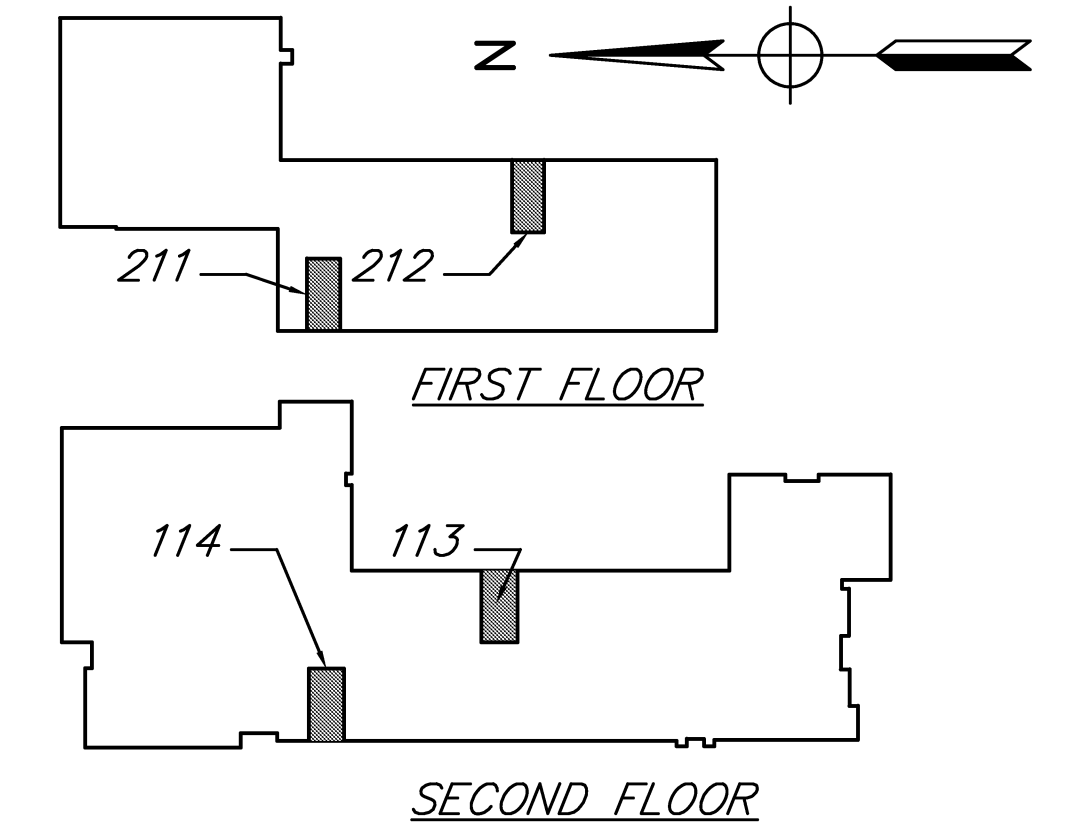


BATHROOM DEMOLITION PLANS
SCALE: 1/4" = 1'-0"



BUILDING KEY
N.T.S.

DEMOLITION NOTES

§3303.2 MRC 2009 DEMOLITION

§3303.2 PEDESTRIAN PROTECTION. THE WORK OF DEMOLISHING ANY BUILDING SHALL NOT BE COMMENCED UNTIL PEDESTRIAN PROTECTION IS IN PLACE AS REQUIRED BY THIS CHAPTER.

§3303.6 UTILITY CONNECTIONS. SERVICE UTILITY CONNECTIONS SHALL BE DISCONTINUED AND CAPPED IN ACCORDANCE WITH THE APPROVED RULES AND THE REQUIREMENTS OF THE AUTHORITY HAVING JURISDICTION.

GENERAL SPECIFICATIONS FOR DEMOLITION:

1. FIELD VERIFY ALL EXISTING CONDITIONS AND DIMENSIONS. IF FIELD CONDITIONS ARE NOT AS SHOWN ON PLAN, CONTACT THE PROJECT ARCHITECT OR ENGINEER IMMEDIATELY PRIOR TO PROCEEDING WITH ANY WORK.
2. PROVIDE APPROPRIATE BARRICADES, SIGNAGE, AND OTHER SAFETY PRECAUTIONS SO AS TO PROTECT VISITORS, TRADESMEN, AND EXISTING REMAINING CONDITIONS.
3. COMPLETELY REMOVE ALL WORK AND RELATED WORK IN AREAS DESIGNATED ON THE PLAN.
4. DISCONNECT, REMOVE, AND CAP ALL EXISTING UTILITIES AS INDICATED AND REQUIRED TO PERMIT NEW WORK.
5. ALL WORK TO BE COMPLETED BY APPROPRIATE, EXPERIENCED TRADES (I.E. ELECTRICAL DEMOLITION BY ELECTRICIANS, ETC.)
6. RESTORE EXISTING AREAS WHICH ARE DAMAGED DURING CONSTRUCTION. MATCH EXISTING MATERIAL AND FINISHES.
7. DO NOT USE EXPLOSIVES OR UNSAFE DEMOLITION METHODS.
8. REMOVE ALL DEBRIS FROM THE SITE. DO NOT BURN REFUSE ON SITE. MATERIAL TO BE TRANSPORTED TO AN APPROVED SITE. COORDINATE SALVAGEABLE ITEMS WITH THE OWNER. STORE SALVAGEABLE ITEMS WITHIN DESIGNATED AREAS.
9. THE CONTRACTOR SHALL PROVIDE PROPER SHORING AND BRACING WHERE NEEDED.

DEMOLITION KEY

- ① - REMOVE EXISTING PARTITIONS AND ACCESSORIES AS SHOWN
- ② - REMOVE EXISTING SINK
- ③ - REMOVE MIRROR, PAPER TOWEL DISPENSER AND SOAP DISPENSER

BY	MARK	REVISIONS	DATE
<small>THE WORK REPRESENTED BY THIS DRAWING WAS DESIGNED BY THE ENGINEER FOR THIS SPECIFIC APPLICATION AND SPECIFIC LOCATION DESCRIBED HEREIN IN ACCORDANCE WITH THE CONDITIONS PREVALENT AT THE TIME THE DESIGN WAS DONE. THE ENGINEER DOES NOT GUARANTEE AND WILL NOT BE LIABLE FOR ANY OTHER LOCATION, CONDITION, DESIGN OR PURPOSE.</small>			
CENTRAL SCHOOL BATHROOM RENOVATIONS OWOSSO PUBLIC SCHOOLS 2012 SINKING FUND IMPROVEMENTS			
DEMOLITION PLAN			
		<small>SAGINAW OFFICE 230 S. Washington Ave. Saginaw, MI 48607 Tel. 989-754-4717 Fax. 989-754-4440 www.SpicerGroup.com</small>	
DE. BY: DSB	CH. BY: DWH	PROJECT NO. 119452SG2011	
DR. BY: DSB	APP. BY: DWH		
STDS.	SHEET 2 OF 4	A	
DATE DECEMBER, 2011	FILE NO. DA-1203-02	1	
SCALE 1/4" = 1'-0"			