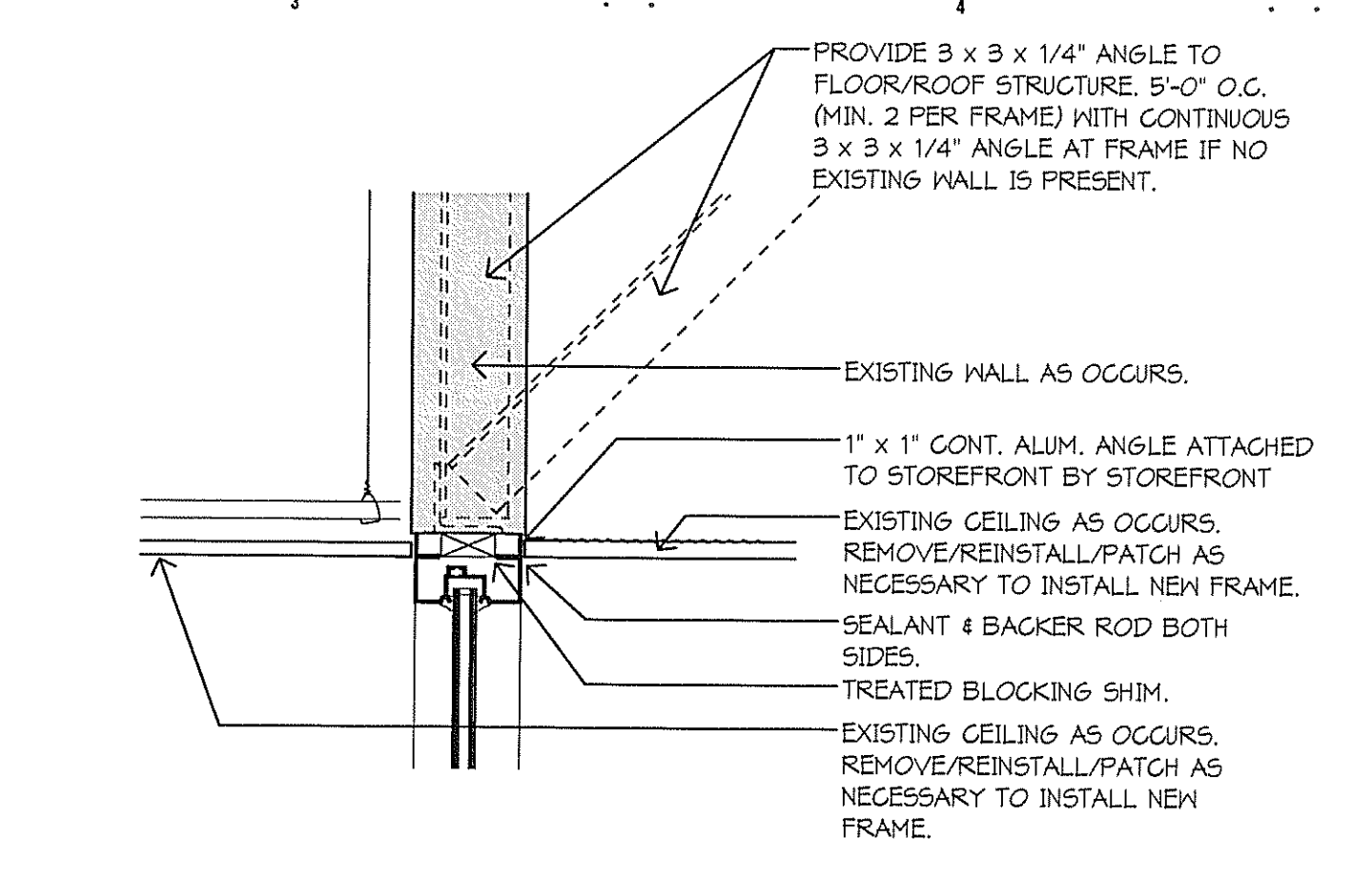
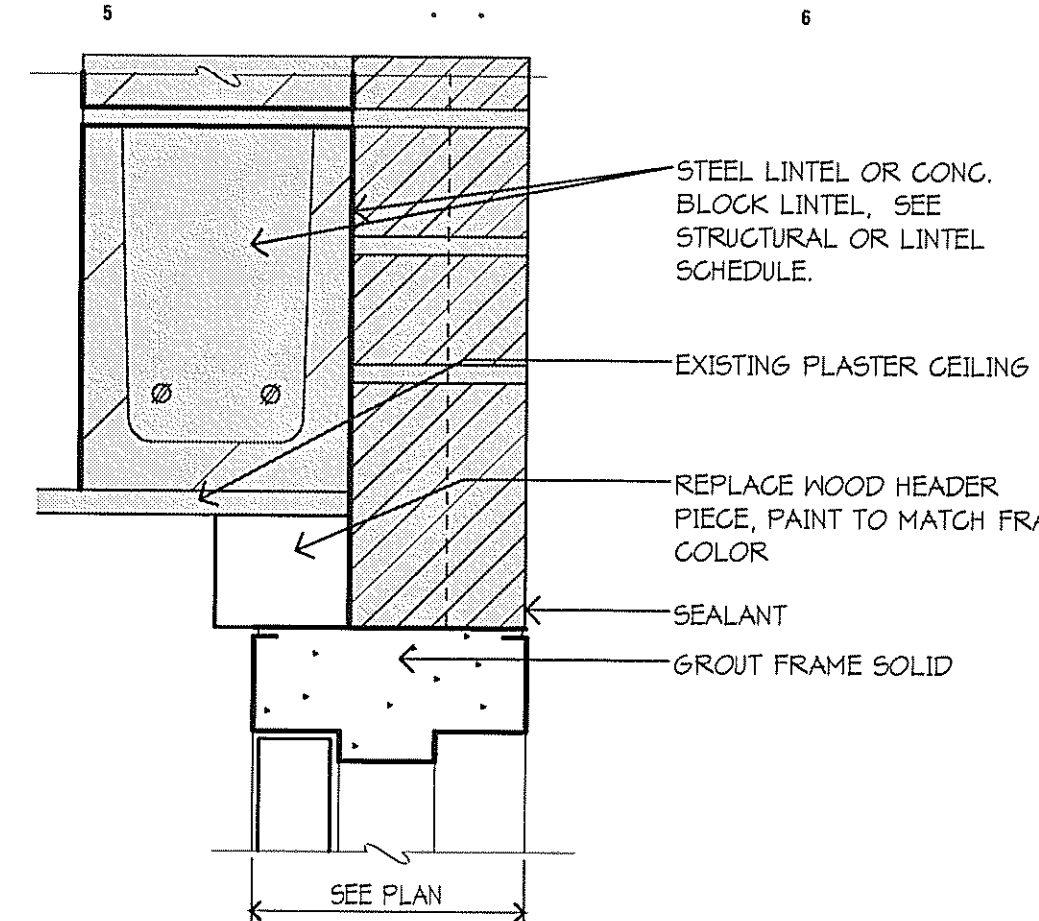


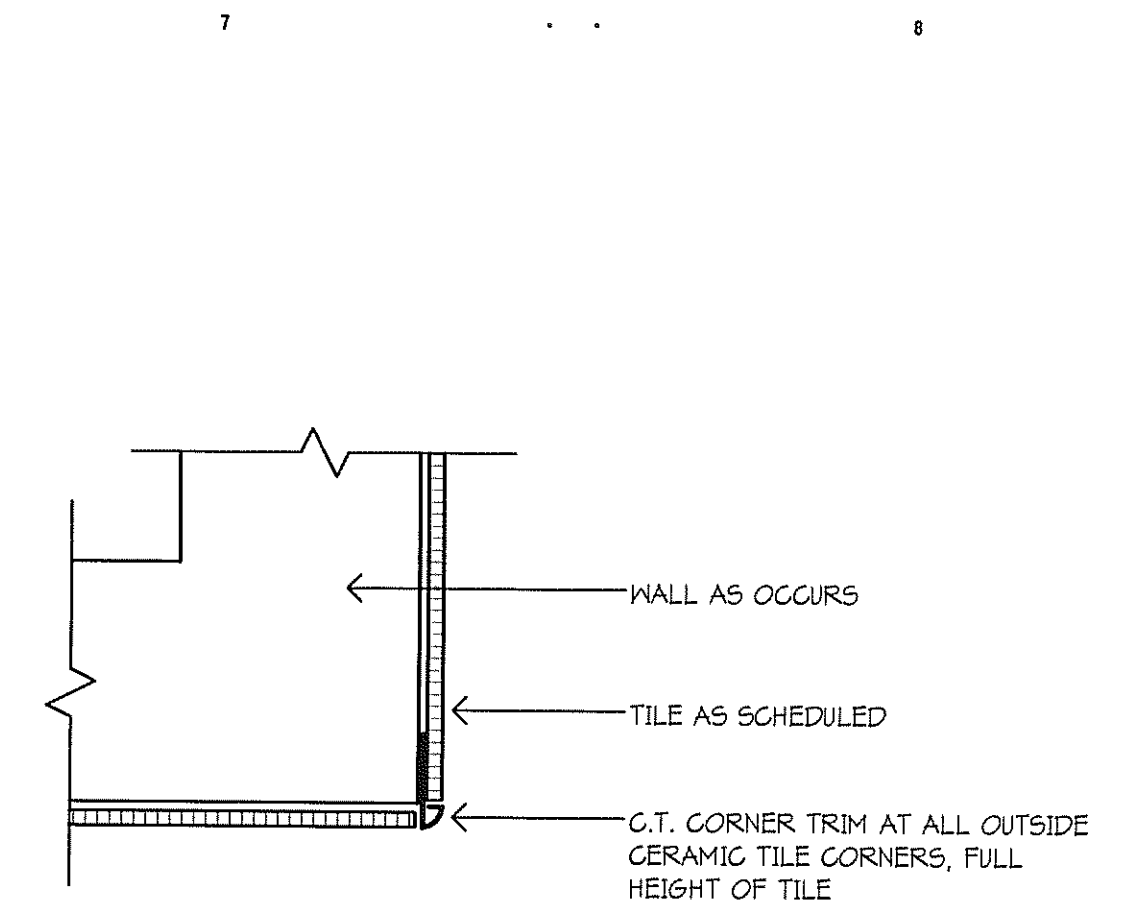
A1 H.M. HEAD AT EXISTING MASONRY
3" = 1'-0"



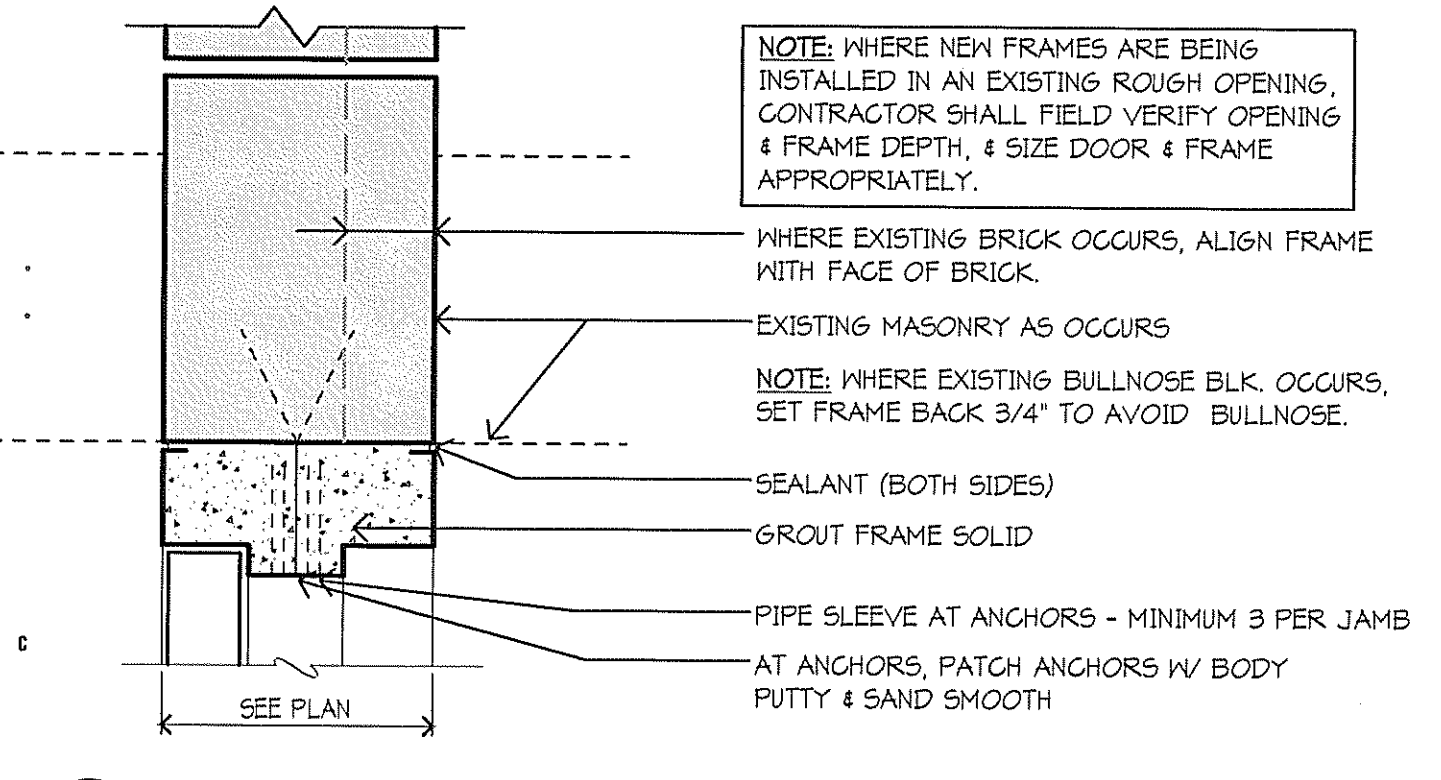
A2 HEAD DETAIL
1 1/2" = 1'-0"



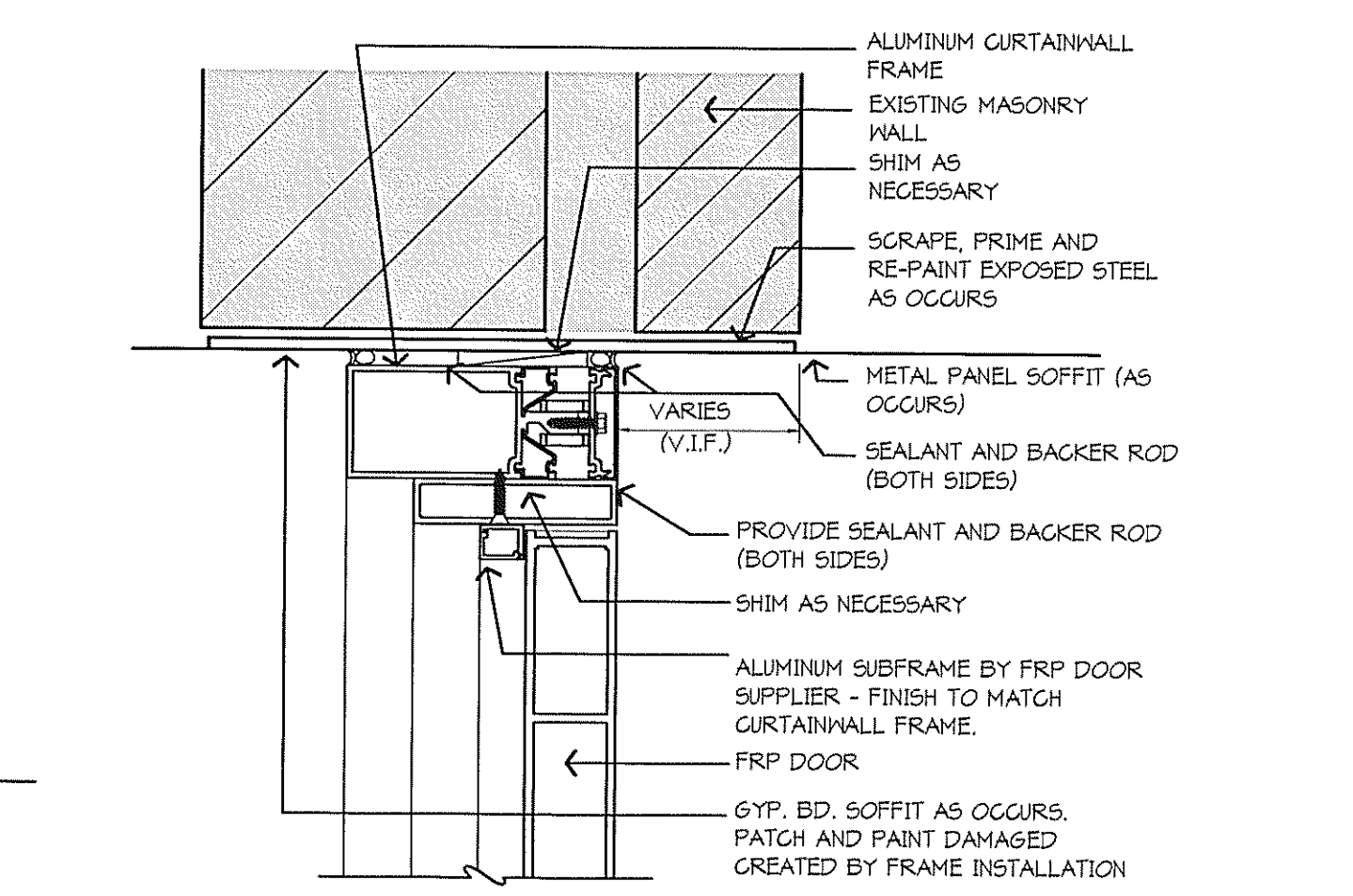
A3 H.M. HEAD AT EXISTING MASONRY
3" = 1'-0"



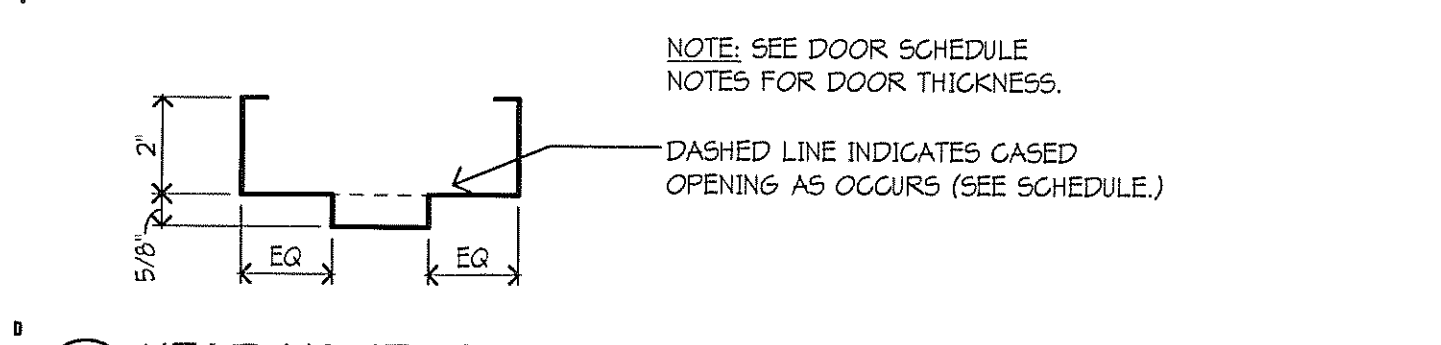
A7 PLAN AT CORNER TRIM
3" = 1'-0"



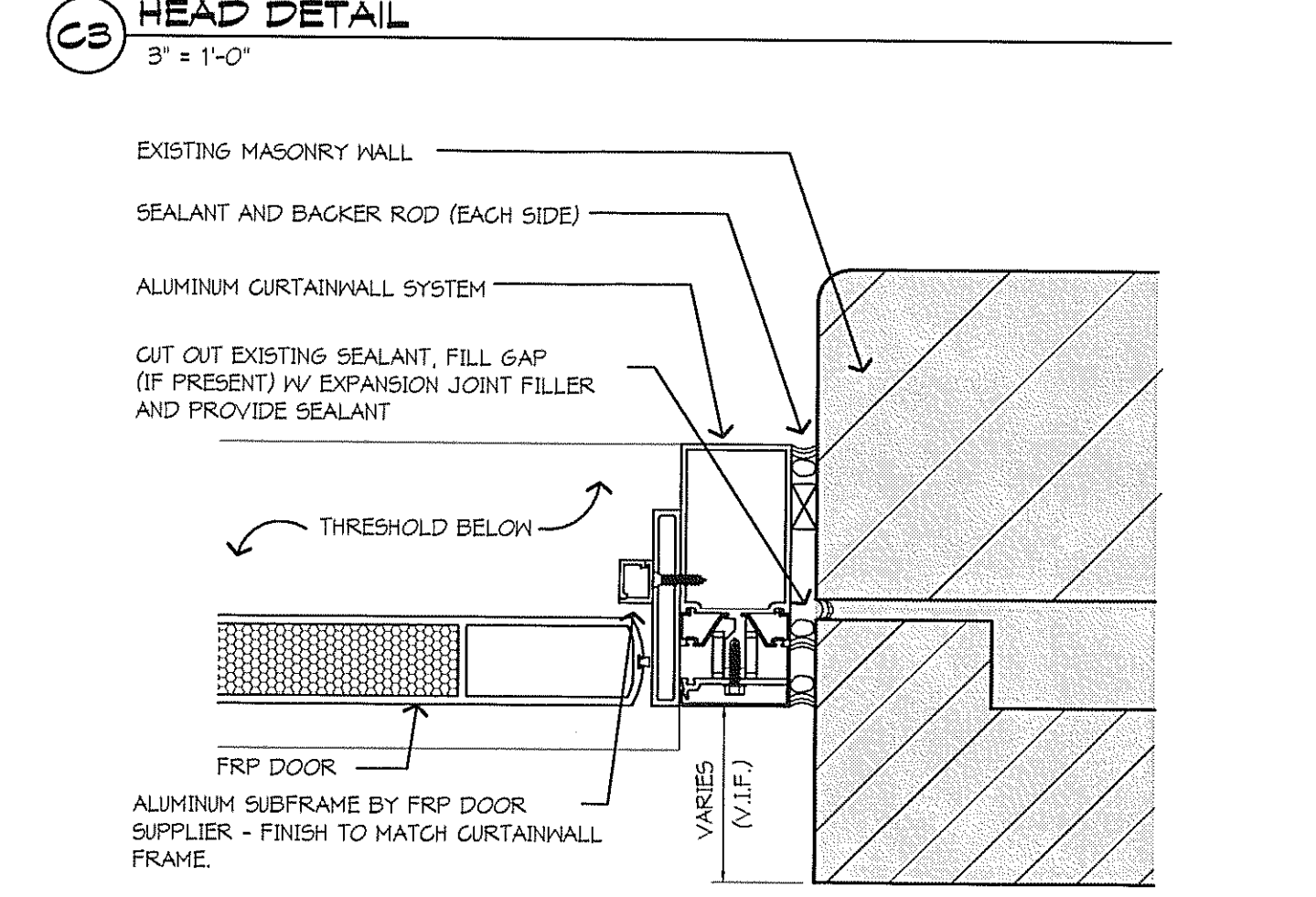
C1 H.M. JAMB AT EXISTING MASONRY (SILL SIMILAR)
3" = 1'-0"



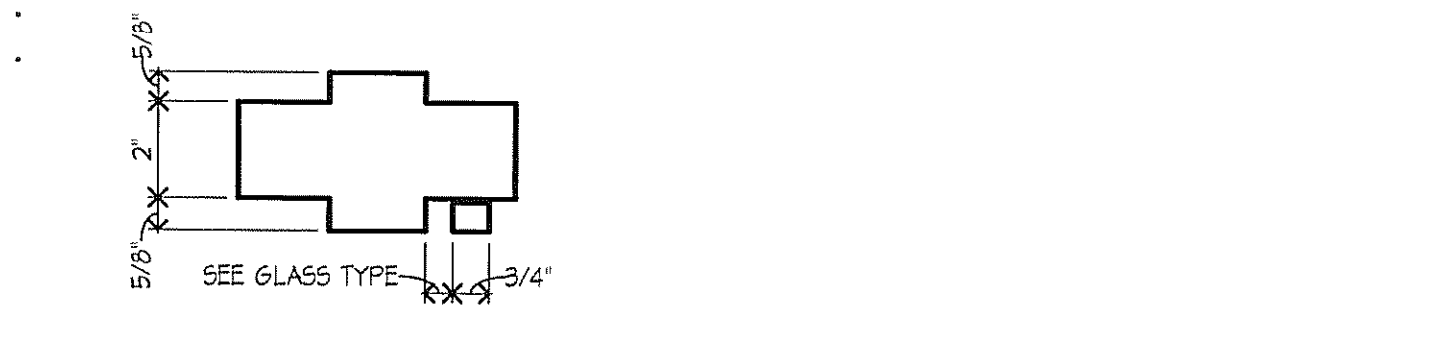
C3 HEAD DETAIL
3" = 1'-0"



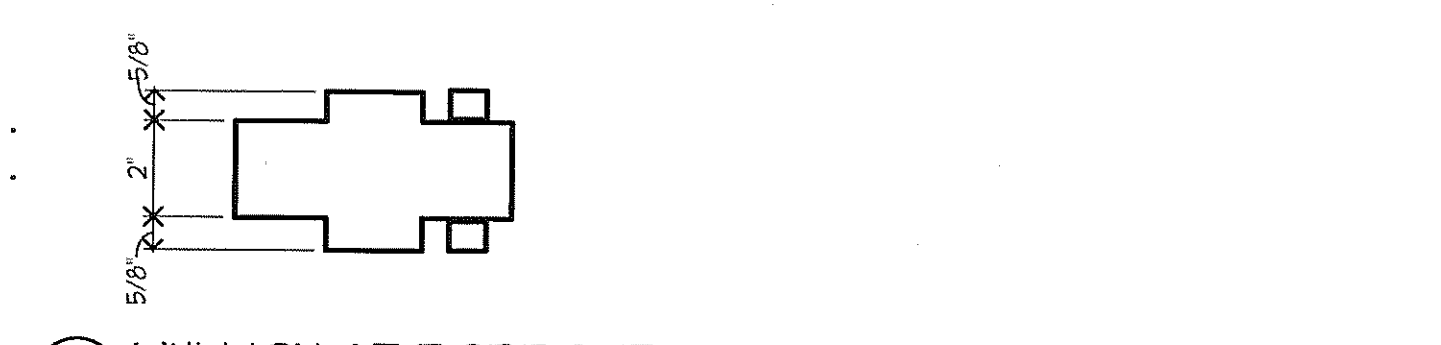
D1 HEAD/JAMB AT DOOR
3" = 1'-0"



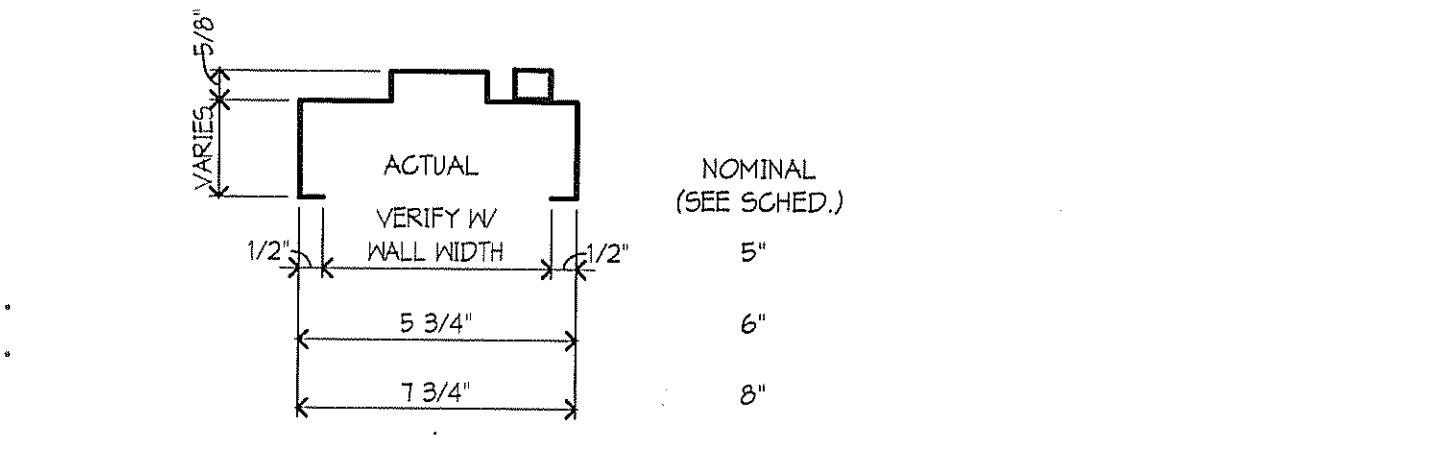
E3 JAMB DETAIL
3" = 1'-0"



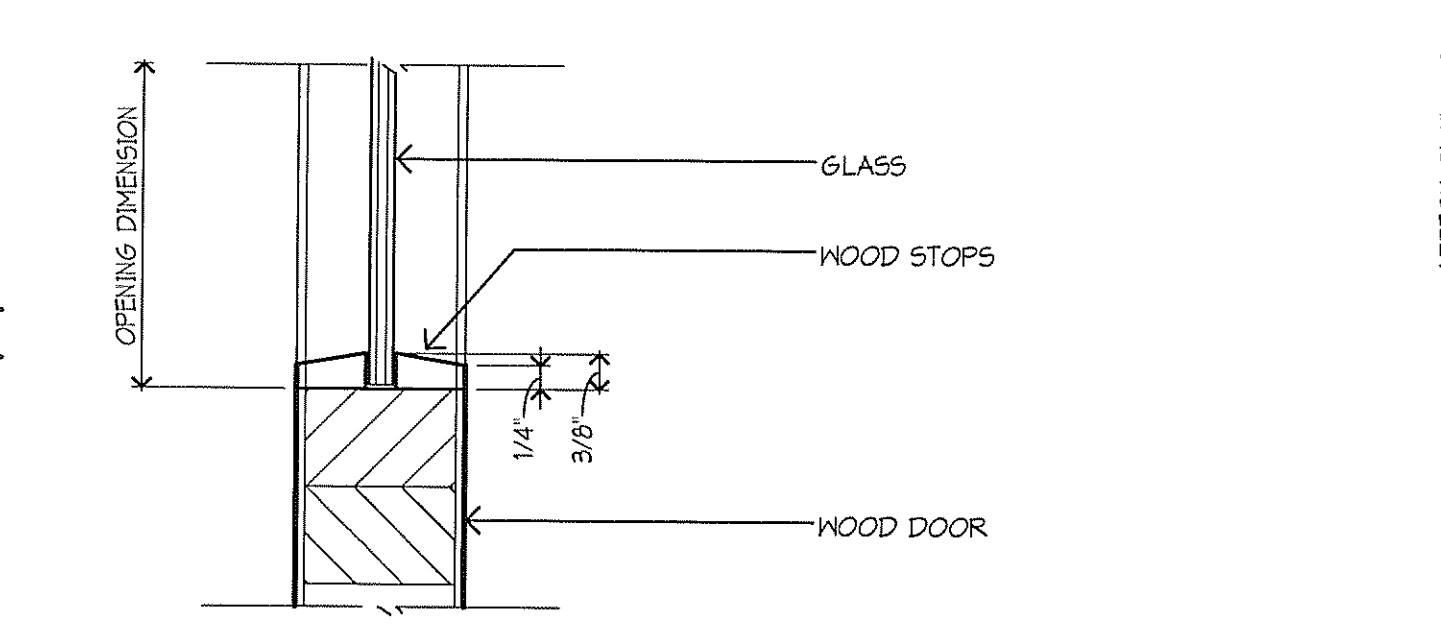
E1 MULLION AT DOOR AND BORROWED LITE
3" = 1'-0"



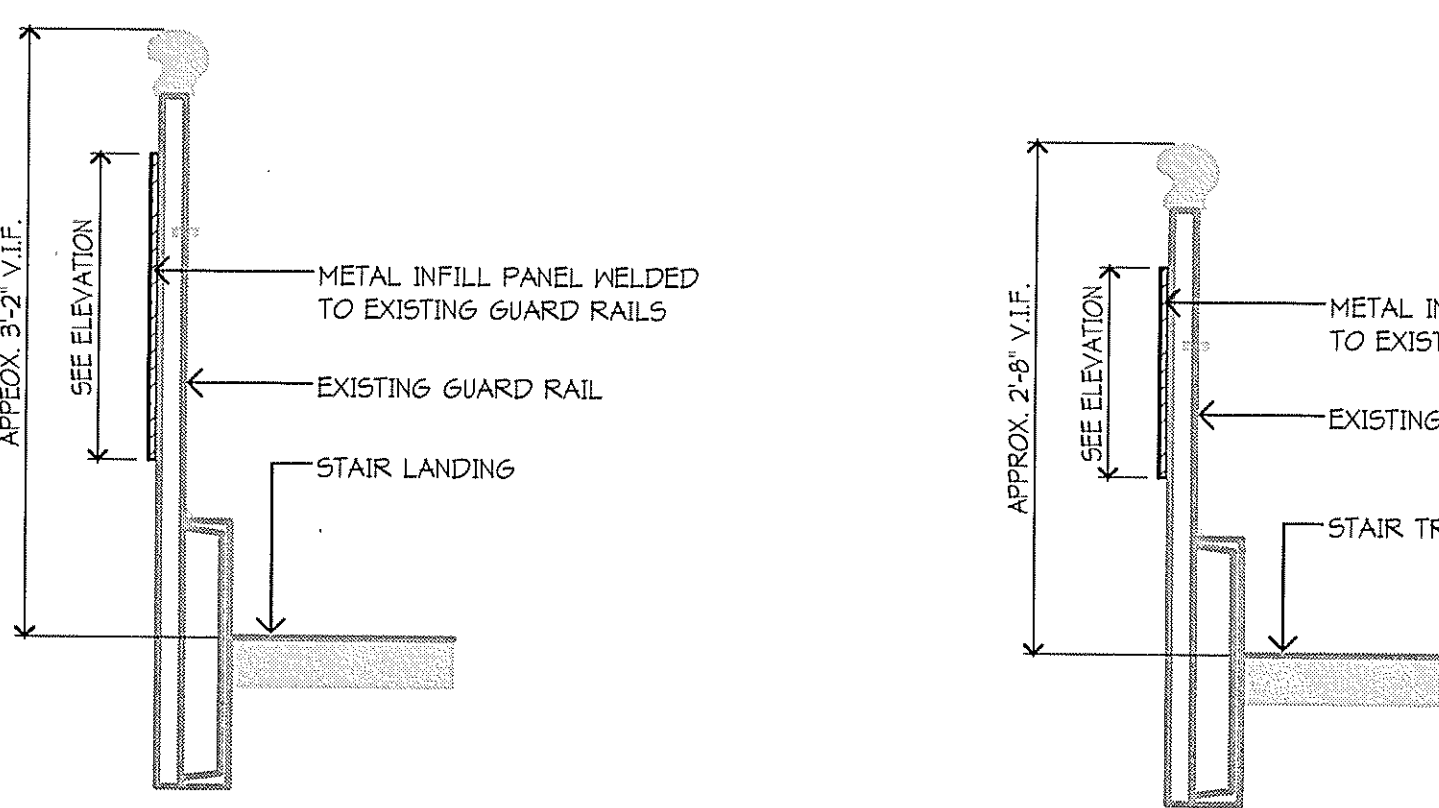
F1 MULLION AT BORROWED LITE
3" = 1'-0"



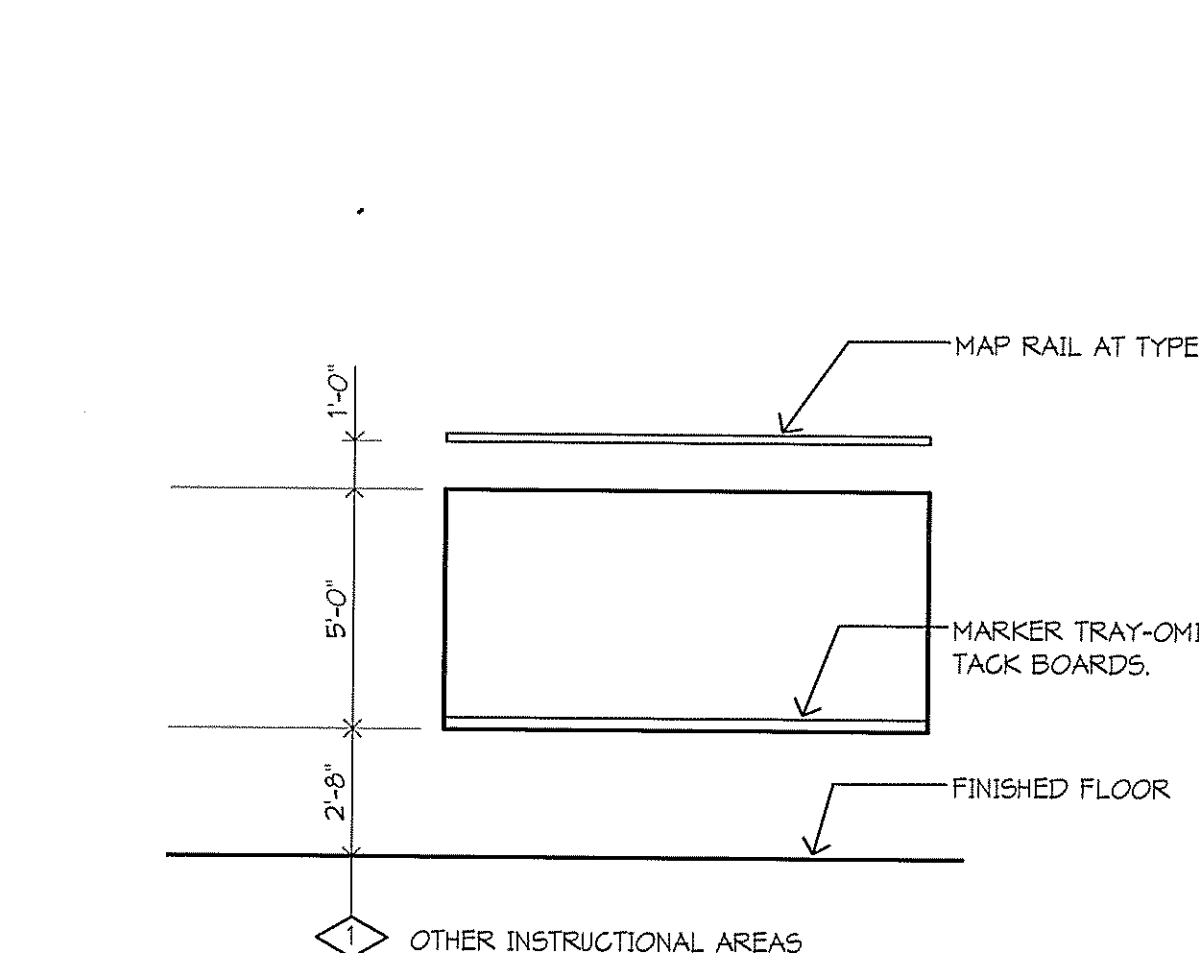
G1 HEAD/JAMB/SILL AT BORROWED LITE
3" = 1'-0"



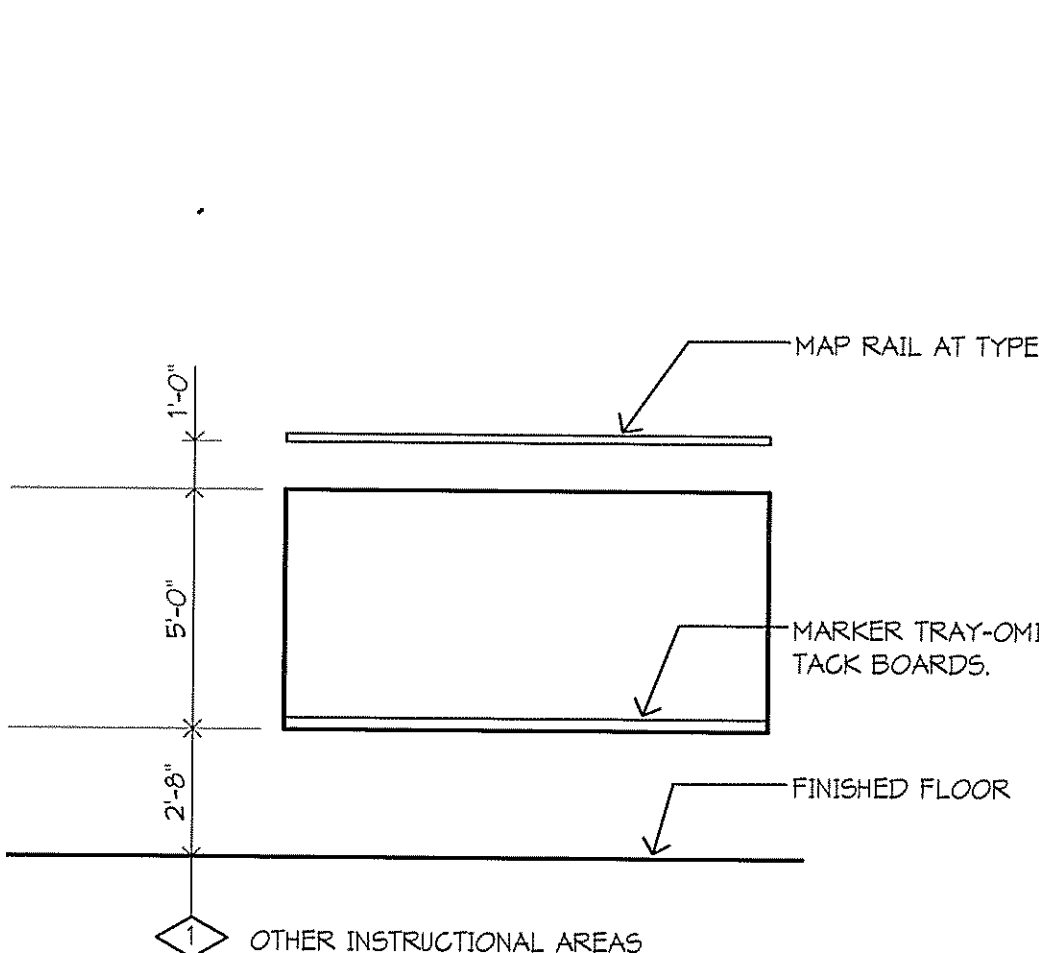
H1 GLAZING AT WOOD DOOR - NON RATED
6" = 1'-0"



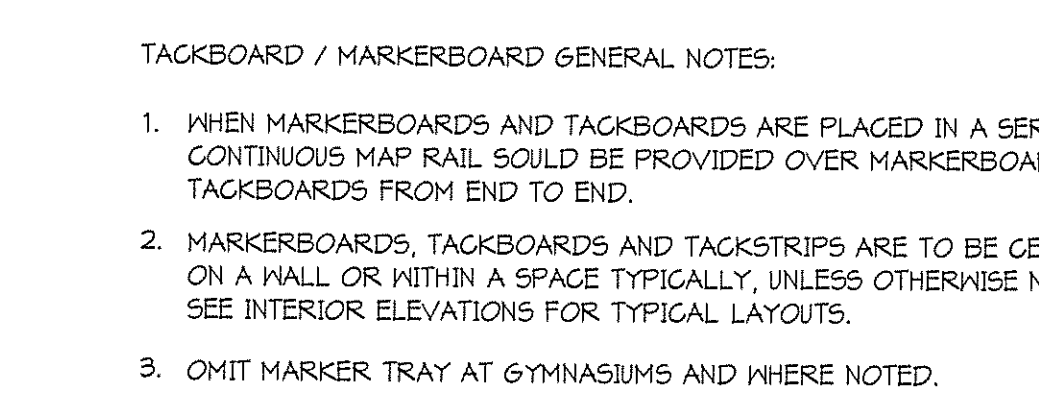
H3 SECTION @ STAIR LANDING
1" = 1'-0"



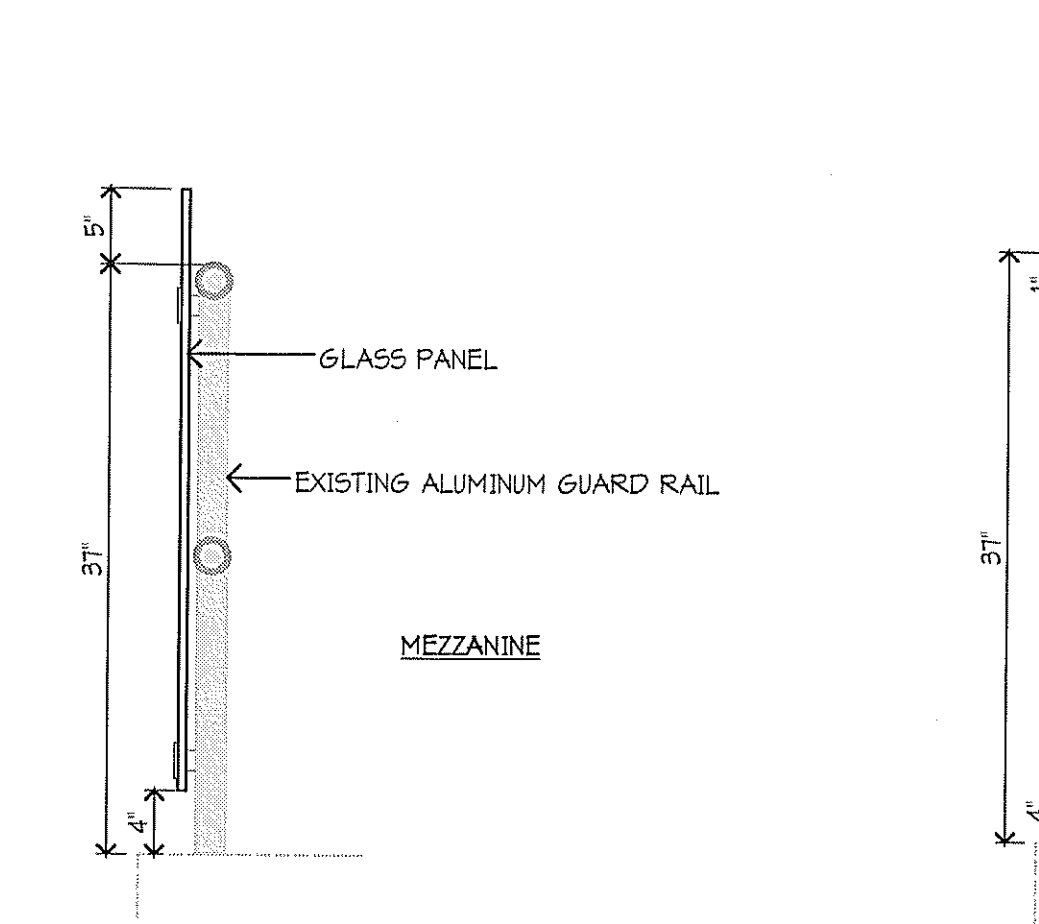
H4 SECTION @ STAIR TREAD
1" = 1'-0"



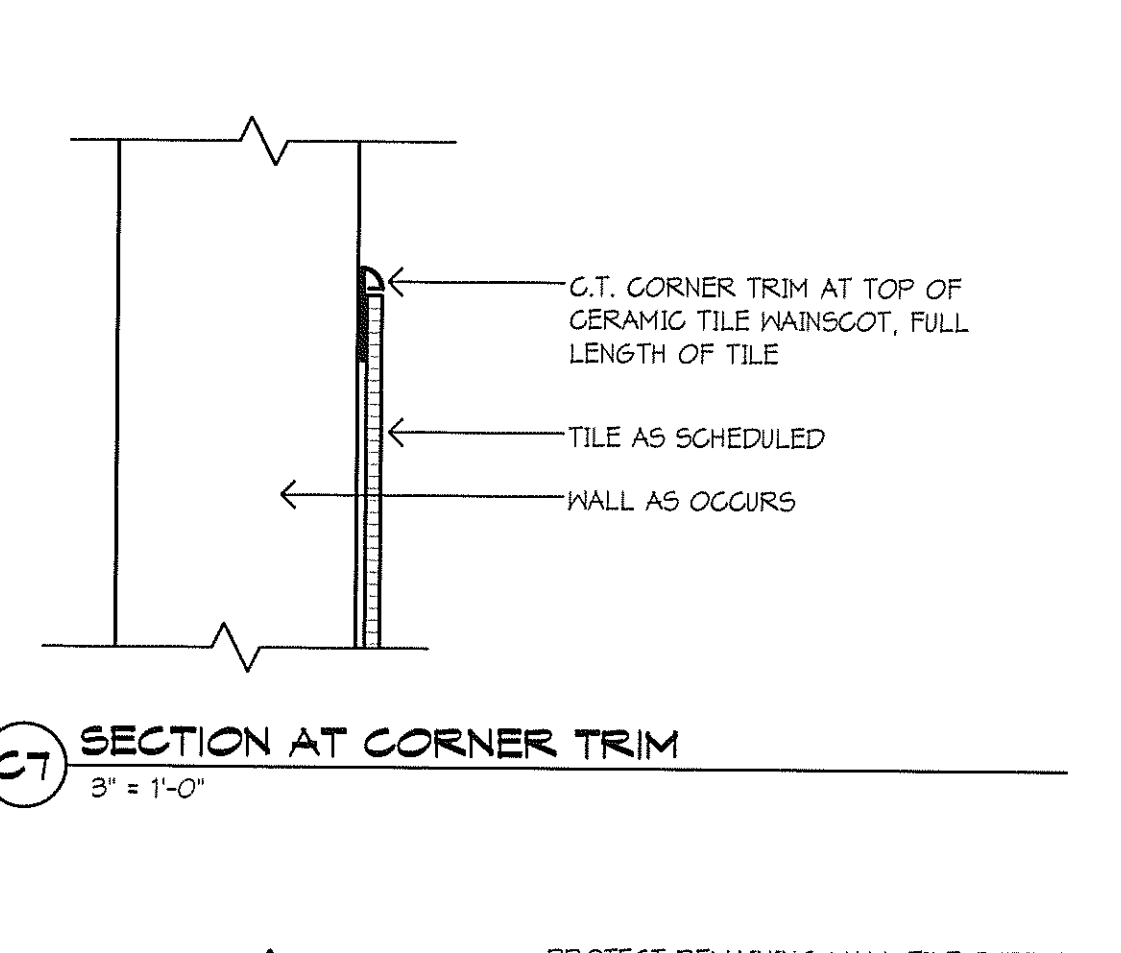
H5 SECTION @ RECESSED BENCH
3/4" = 1'-0"



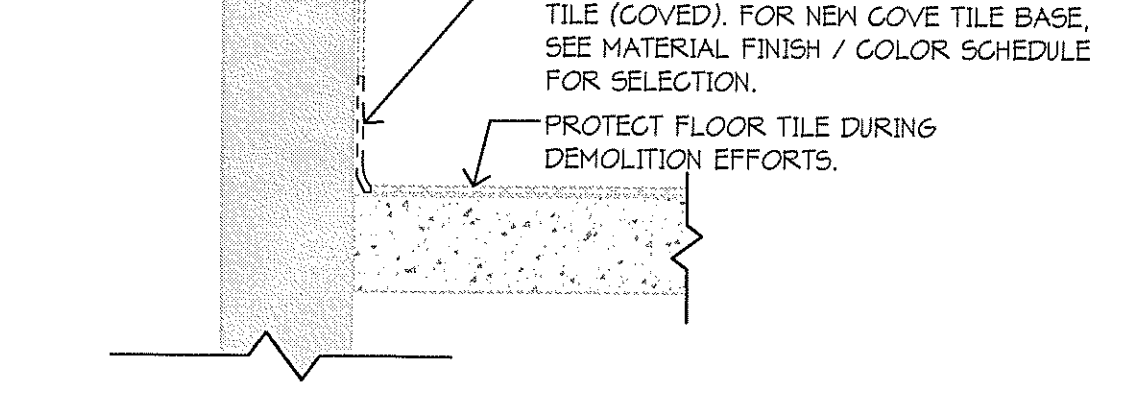
D5 MOUNTING TYPES
1/4" = 1'-0"



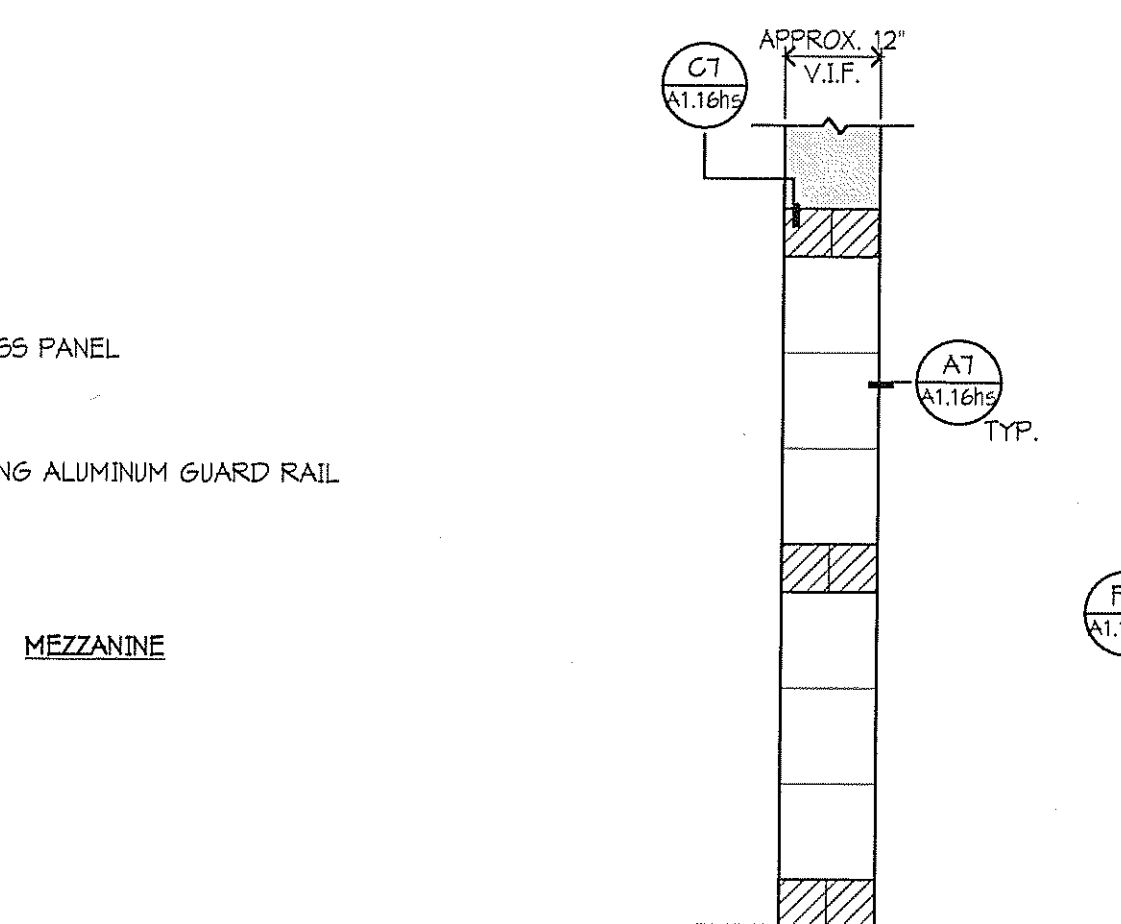
F6 SECTION @ RAILING
1" = 1'-0"



C7 SECTION AT CORNER TRIM
3" = 1'-0"



D7 DETAIL @ SAWCUT COVE BASE
1 1/2" = 1'-0"



F7 INTERIOR ELEVATION @ COLUMN
1/2" = 1'-0"

SYMBOLS

DETAIL BOOK DETAIL REFERENCE: 1 (31001) DETAIL NO. PAGE NO.

MAJOR WALL & BLDG. SECTION: C1 (A2.22) DETAIL NO. DRAWING NO.

GRIDS: B

ELEVATIONS: INTERIOR (31001) DETAIL NO. DRAWING NO.; EXTERIOR (A2.20) DETAIL NO. DRAWING NO.

OPENINGS, DEPRESSIONS OR AS NOTED: [Symbol]

LARGE SHEET DETAIL REFERENCE: D2 (A2.22) DETAIL NO. DRAWING NO.

NOTES, DIMENSIONS & DETAIL KEYS APPLY FROM NOTED DETAIL: 1 (31001) NOTES APPLY.

MARKERBOARDS, TACKBOARDS, MAP RAILS: 8'-0" MBD TYPE [Symbol]

ELEVATION: [Symbol]

REVISIONS: ROOM NAME: CLASSROOM; ROOM NUMBER: A102; OWNER INFO, AS NEEDED: [Symbol]; CEILING HEIGHT: 8'-5"; CEILING MAT'L/FIN: AGT 1/4"; DOOR OR HWN SWING: A102; BORROWED LIGHT: A102L; EXISTING WALL/DOOR/OTHER: [Symbol]; DEMOLISHED WALL/DOOR/OTHER: [Symbol]; HINGE SIDE: [Symbol]; WALL TYPES: EXTERIOR WINDOWS (WH), STOREFRONT (SF), CURTAINWALL (CW), LOUVER (L).

- TACKBOARD / MARKERBOARD GENERAL NOTES:**
- WHEN MARKERBOARDS AND TACKBOARDS ARE PLACED IN A SERIES, A CONTINUOUS MAP RAIL SHOULD BE PROVIDED OVER MARKERBOARDS / TACKBOARDS FROM END TO END.
 - MARKERBOARDS, TACKBOARDS AND TACKSTRIPS ARE TO BE CENTERED ON A WALL OR WITHIN A SPACE TYPICALLY, UNLESS OTHERWISE NOTED. SEE INTERIOR ELEVATIONS FOR TYPICAL LAYOUTS.
 - OMIT MARKER TRAY AT GYMNASIUMS AND WHERE NOTED.

MASONRY LINTEL SCHEDULE - NON BEARING WALLS

12" Block	8" Block	6" Block	4" Block	Clear Masonry Opening
2-#4 Bottom	2-#4 Bottom	1-#4 Bottom	1-#4 Bottom	Non bearing wall up to 4'-0" span.
2-#5 Bottom	2-#5 Bottom	1-#5 Bottom	N/A	Non bearing wall 4'-1" to 8'-0" span.

- Fill lintel blocks solid with 3,000 P.S.I. concrete (3/8" maximum aggregate). Minimum bearing for block lintels 8" on solid masonry. Locate control joints beyond lintel bearing.
- Provide block lintels over all openings through block walls not listed in steel lintel schedule.
- See details for types and locations.
- Verify size and location of all mechanical unit ventilators, unit heaters, louvers and duct openings with mechanical contractor.
- For all openings including mechanical and electrical through masonry walls, provide per schedule unless noted otherwise.
- Refer to structural drawings for masonry bearing wall lintels.

NOTE:
This schedule applies for masonry wall openings under the following conditions:
A. The height of masonry above the opening is at least equal to the clear width of the opening.
B. The width of the wall on each side of the opening is at least equal to the clear opening width.
See 13002 for lintels at openings not meeting these conditions.
This schedule may be used for any lintel in solidly grouted walls up to 8' span.

MISC. METAL LINTEL SCHEDULE - NON-BEARING WALLS

Clear Masonry Opening	4" Wall	6" Wall	8" Wall	1'-0" Wall	1'-4" Wall
4'-0" or Less	3 1/2" x 3 1/2" x 5/16" x 5/16" LLLV	(2) 2 1/2" x 3 1/2" x 5/16" x 5/16" LLLV	(2) 3 1/2" x 3 1/2" x 5/16" x 5/16" LLLV	(2) 5" x 3 1/2" x 5/16" x 5/16" LLLV	N 8x10 PLUS 5/16" x 15" PLATE
5'-0" or Less	3 1/2" x 5" x 5/16" x 5/16" LLLV	(2) 3" x 5" x 5/16" x 5/16" LLLV	(2) 3 1/2" x 5" x 5/16" x 5/16" LLLV	(2) 5" x 3 1/2" x 5/16" x 5/16" LLLV	N 8x10 PLUS 5/16" x 15" PLATE
6'-0" or Less	3 1/2" x 5" x 5/16" x 5/16" LLLV	(2) 3" x 5" x 5/16" x 5/16" LLLV	(2) 3 1/2" x 5" x 5/16" x 5/16" LLLV	(2) 5" x 3 1/2" x 5/16" x 5/16" LLLV	N 8x10 PLUS 5/16" x 15" PLATE
7'-0" or Less	3 1/2" x 5" x 5/16" x 5/16" LLLV	(2) 3" x 5" x 5/16" x 5/16" LLLV	(2) 3 1/2" x 5" x 5/16" x 5/16" LLLV	(2) 5" x 3 1/2" x 5/16" x 5/16" LLLV	N 8x10 PLUS 5/16" x 15" PLATE
8'-0" or Less	3 1/2" x 5" x 5/16" x 5/16" LLLV	(2) 3" x 5" x 5/16" x 5/16" LLLV	(2) 3 1/2" x 5" x 5/16" x 5/16" LLLV	(2) 5" x 3 1/2" x 5/16" x 5/16" LLLV	N 8x10 PLUS 5/16" x 15" PLATE
12'-0" or Less	N 8x15 PLUS 5/16" x 5" PLATE	N 8x15 PLUS 5/16" x 5" PLATE	N 8x15 PLUS 5/16" x 5" PLATE	N 8x15 PLUS 5/16" x 5" PLATE	N 8x15 PLUS 5/16" x 5" PLATE

- All lintels by miscellaneous metals.
- Provide lintels over all masonry openings not tight to deck, including duct openings. Refer to mechanical drawings.
- Lintels not required for hollow metal door frames with concrete block openings less than 2'-6".
- Provide 8" minimum bearing each end, therefore clear opening plus 1'-4".
- The lintel plate shall be centered in the wall. Edge of plate shall be minimum 5/16" from each edge.
- The schedule above is a general schedule - see details for specific lintel conditions.
- Refer to structural drawings for masonry bearing wall lintels.

2012 REDFORD UNION HIGH SCHOOL IMPROVEMENTS PROJECT

17711 KINLOCH ST.
REDFORD, MI 48240

REDFORD UNION SCHOOL DISTRICT
18499 BEECH DALY ROAD
REDFORD, MI 48240

REDESIGNED BY
WOLD
architects engineers
www.woldae.com

202 East Third Street
Suite Two Hundred
Royal Oak, MI 48067

tel 248 284 0611
fax 248 284 0615
mail@woldae.com

I hereby certify that this plan, specification or report was prepared by me or under my direct supervision and that I am a duly Licensed ARCHITECT under the laws of the State of MICHIGAN

Registration Number: DANIAL KRITTA 1301047942 Date: 10.31.2012

Description	Date	Num

Comm: 094020
Date: 04/18/2012
Drawn: LMP
Check: MKK

North

HIGH SCHOOL - DETAILS OF CONSTRUCTION

Scale: As indicated

A1.16hs