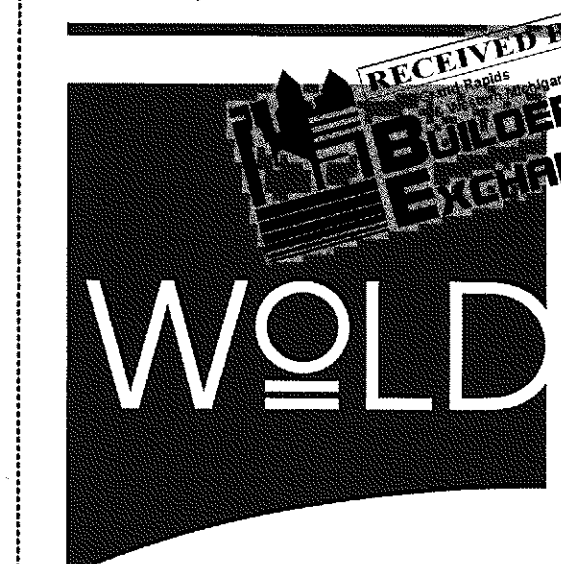


2012 REDFORD UNION HIGH SCHOOL IMPROVEMENTS PROJECT

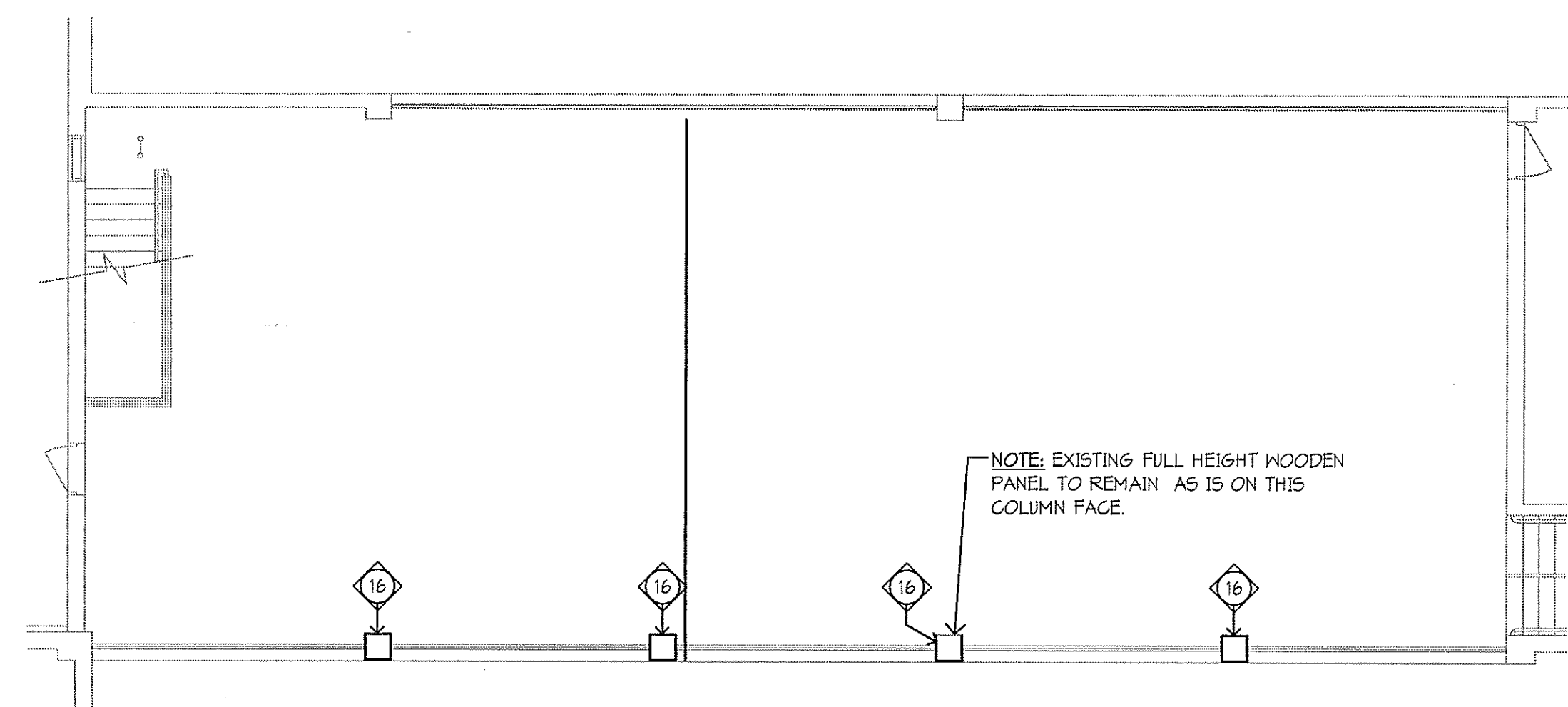
17711 KINLOCH ST.
REDFORD, MI 48240

REDFORD UNION SCHOOL DISTRICT
18499 BEECH DALY ROAD
REDFORD, MI 48240

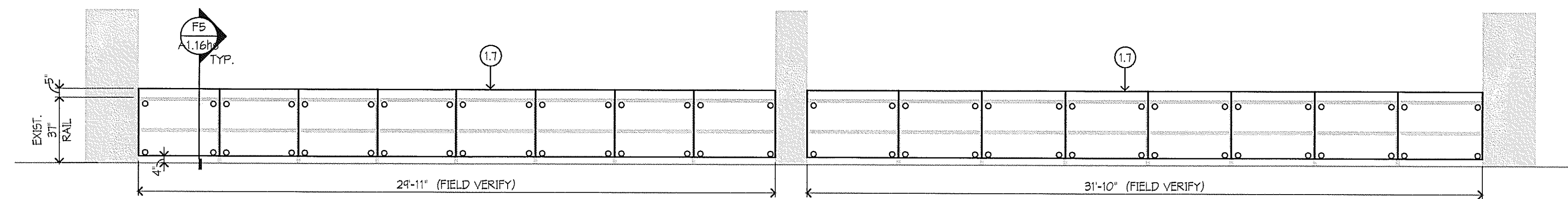


architects engineers
www.woldae.com

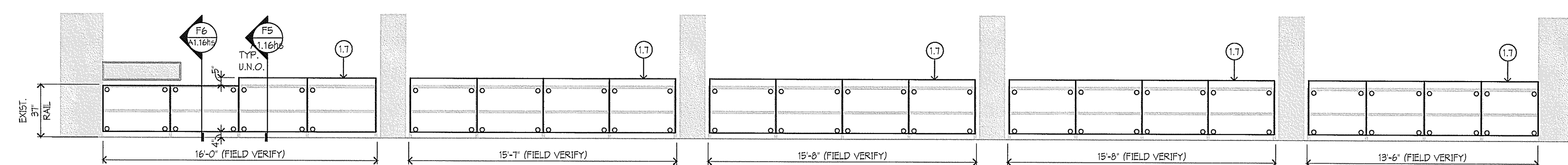
202 East Third Street Suite Two Hundred Royal Oak, MI 48067 Tel: 248 284 0511 Fax: 248 284 0515 mail@woldae.com



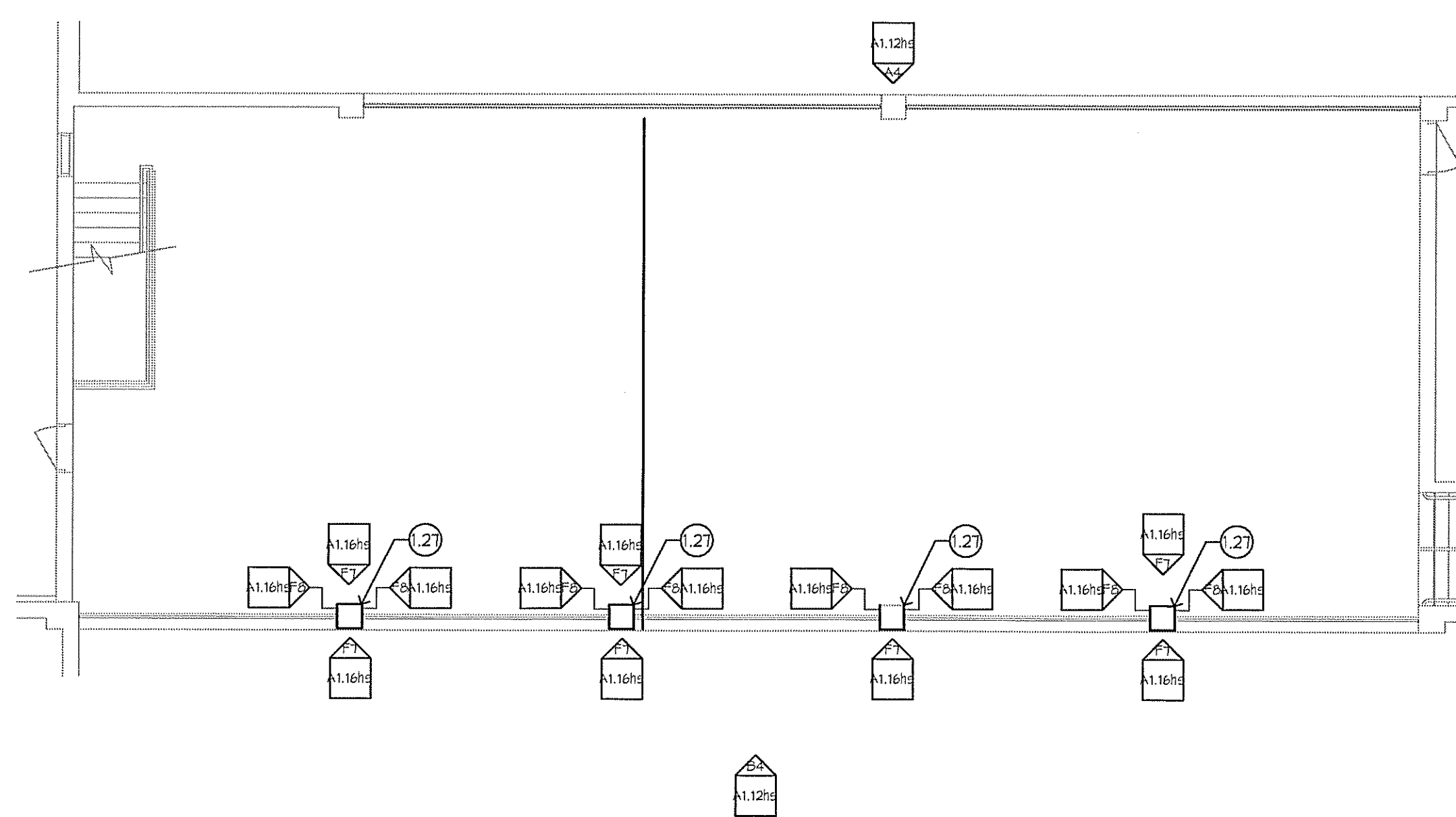
E1 UPPER LEVEL DEMOLITION PLAN - POOL / GYMNASIUM MEZZANINE 1
1/8" = 1'-0"



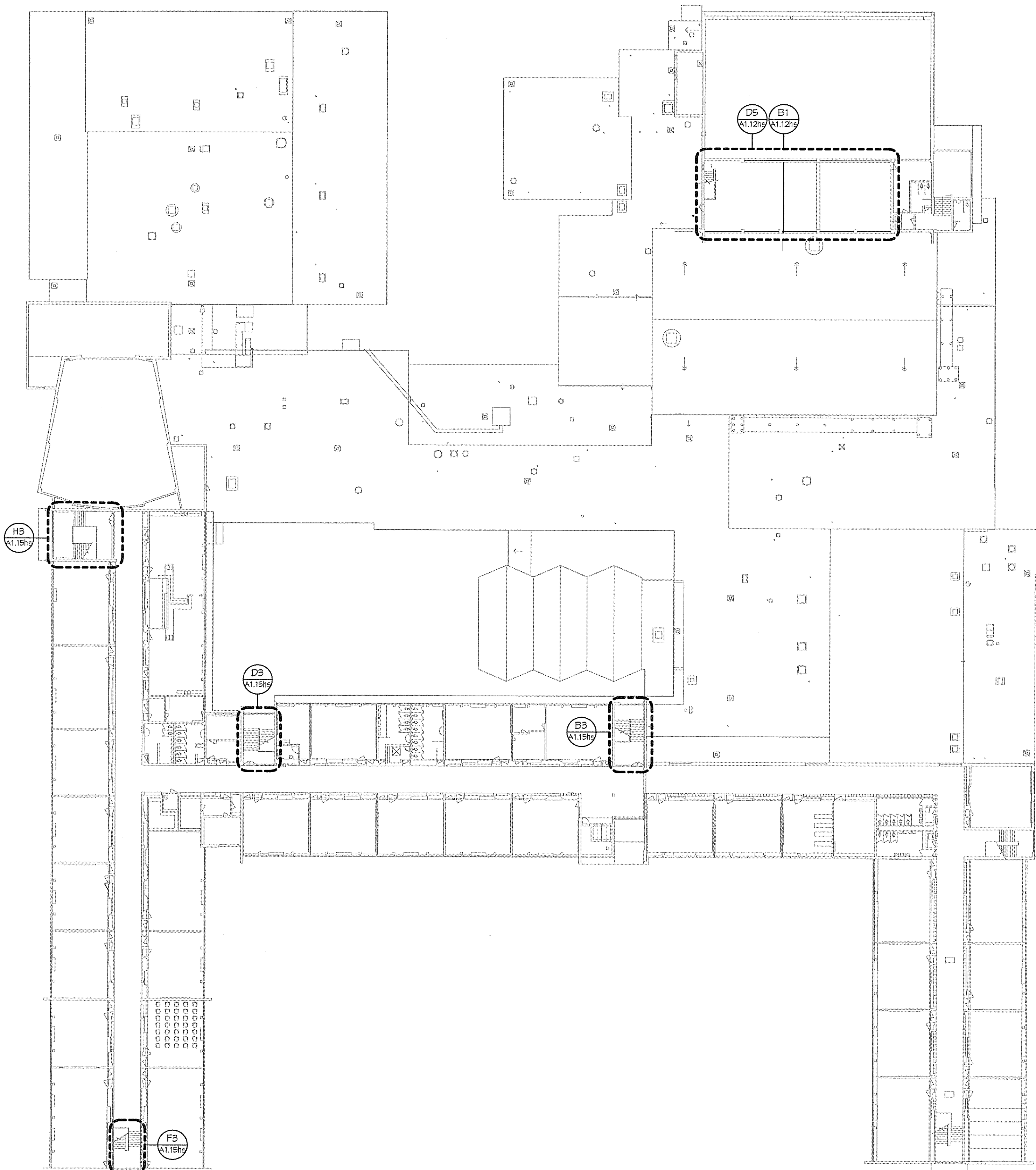
A4 INTERIOR ELEVATION - RAILING @ POOL
1/4" = 1'-0"



E4 INTERIOR ELEVATION - RAILING @ GYMNASIUM
1/4" = 1'-0"



D6 UPPER LEVEL FLOOR PLAN - POOL / GYMNASIUM MEZZANINE
1/8" = 1'-0"



H1 UPPER LEVEL FLOOR PLAN
1" = 30'-0"

DEMOLITION PLAN KEY NOTES:

- REMOVE EXISTING RECESSED FLOOR MAT TRIM AND ANY ADJACENT LUMBER TRIM PIECES.
- REMOVE EXISTING CONCRETE SLAB TO SUB BASE (INCLUDING PORCELAIN FLOOR TILE AS OCCURS) TO THE EXTENTS SHOWN.
- REMOVE EXISTING CONCRETE LOCKER CURB TO THE EXTENTS SHOWN. REMOVAL TO BE FLUSH WITH EXISTING CONCRETE FLOOR LINE TO PROVIDE FOR CONSISTENT APPLICATION OF NEW PORCELAIN FLOOR TILE. AT PARTIAL REMOVAL, REMOVE TO NEAREST LOCKER JOINT. WHERE ROUGH ENDS REMAIN EXPOSED, PROVIDE SMOOTH FINISHED CUT.
- REMOVE EXISTING MASONRY WALL AND COVERED GLAZED TILE BASE AT LOCATION SHOWN FOR THE INSTALLATION OF NEW DOOR AND FRAME. OVERCUT OPENING 4" ON EACH SIDE. SEE NEW WORK.
- REMOVE EXISTING CERAMIC TILE FLOOR TO THE EXTENTS SHOWN. REMOVE TO THE NEAREST GROUT JOINT.
- REMOVE EXISTING GLAZED TILE BASE FROM ENTIRE PERIMETER OF EXISTING CONCRETE LOCKER CURB AT FLOOR.
- REMOVE EXISTING NON-SLIP ADHESIVE STRIPS FROM EXISTING TERRAZZO FLOORING AREA INDICATED REPRESENTS APPROXIMATE LOCATIONS ONLY.
- REMOVE EXISTING VINYL BASE AND VGT FLOORING TO THE EXTENTS SHOWN.
- REMOVE EXISTING VINYL BASE.
- REMOVE EXISTING METAL TOILET PARTITIONS INCLUDING ALL ASSOCIATED ANCHORS AND HARDWARE. ALL PARTITION MOUNTED TOILET ACCESSORIES TO BE TURNED OVER TO THE OWNER.
- REMOVE EXISTING MARBLE BENCH TOPS.
- REMOVE EXISTING LOCKERS TO NEAREST SECTION. LOCKERS TO BE TURNED OVER TO THE OWNER.
- REMOVE EXISTING BENCH, ASSOCIATED SUPPORTS AND HARDWARE FROM EXISTING CONCRETE LOCKER CURB.
- CUT AND REMOVE FIRST COURSE OF EXISTING COVERED HALL TILE THE ENTIRE LENGTH OF WALL INDICATED. SEE DETAIL D7/A1.16hs.
- CUT AND REMOVE EXISTING 1" (WIDE) X 2" (LONG) X 1/4" (THICK) STEEL GRATING CURRENTLY FINISHED INTO GRATING.
- REMOVE CERAMIC TILE FROM EXISTING COLUMN AND ATTACHED WOOD PANELS AS OCCURS. TILE HEIGHT IS APPROXIMATELY 3'-3" A.F.F.
- CHOP OUT EXISTING 14" X 14" VEHICLE EXHAUST FLOOR PLATE AND FRAME FROM EXISTING CONCRETE FLOOR.
- REMOVE EXISTING CARPET, VINYL BASE AND ASSOCIATED ADHESIVES.

DEMOLITION LEGEND

- WALL TO REMAIN
- WALL TO BE REMOVED
- DOOR TO REMAIN
- DOOR, FRAME, AND HARDWARE TO BE REMOVED UNLESS NOTED OTHERWISE
- DESIGNATED ITEM TO REMAIN
- DESIGNATED ITEM TO BE REMOVED

FLOOR PLAN KEY NOTES:

- INFILL EXISTING WALK OFF MATT RECESSES WITH SELF LEVELING CEMENT BASE UNDERLAYMENT LEVEL WITH EXISTING CONCRETE FLOORING. SEE D6/A1.14hs FOR FINISH FLOOR MATERIAL.
- PROVIDE 4" BULLNOSED SOAP BLOCK AT RAIL EDGES, PAINT TO MATCH EXISTING WALL.
- PROVIDE NEW LINTEL ABOVE DOOR. SEE LINTEL SCHEDULE.
- PROVIDE NEW 2'-10" X 2'-10" HDPE FLOOR GRATE VERIFY EXACT SIZE IN FIELD.
- PROVIDE NEW 6' X 6' METAL GRATE WITH STRUCTURAL BEAM SUPPORTS. VERIFY EXACT SIZE IN FIELD.
- PROVIDE NEW STAINLESS STEEL CORNER GUARD, FULL HEIGHT.
- PROVIDE NEW TEMPERED GLASS PANELS AT EXISTING ALUMINUM GUARD RAIL.
- FILL ALL HOLES IN UNDERSIDE OF EXISTING PLASTER CANOPY.
- PROVIDE NEW 2'X2' FLOOR TILE. SEE MATERIAL FINISH / COLOR SCHEDULE FOR SELECTION.
- PROVIDE NEW COVERED GLAZED TILE BASE (GT2hs) AT ENTIRE PERIMETER OF CONCRETE LOCKER CURB. SEE MATERIAL FINISH / COLOR SCHEDULE FOR SELECTION.
- PROVIDE NEW COVERED TILE BASE (GT2hs) AT ENTIRE LENGTH OF WALL. CUT TO FIT. SEE MATERIAL FINISH / COLOR SCHEDULE FOR SELECTION.
- PROVIDE NEW VGT FLOORING AND VINYL BASE. SEE MATERIAL FINISH / COLOR SCHEDULE FOR SELECTION.
- PREPARE ENTIRE CEILING SURFACE (INCLUDING LOOSE / FLAKING AREAS OF EXISTING PAINT) TO RECEIVE NEW PAINT. PAINT ALL CEILING SURFACES AS HATCHED ON REFLECTED CEILING PLAN. SEE MATERIAL FINISH / COLOR SCHEDULE FOR SELECTION.
- PREP AND PAINT UNDERSIDE AND CURVED FASCIA OF CANOPY. SEE MATERIAL FINISH / COLOR SCHEDULE FOR SELECTION.

- PROVIDE NEW PORCELAIN WALL TILE AT POOL BENCH FRONTS. SEE ELEVATION H1/A1.14hs FOR PATTERN AND MATERIAL.
- PROVIDE NEW SOLID PLASTIC TOILET PARTITIONS AND DOORS. VERIFY IN FIELD EXACT LOCATIONS OF TOILETS AND TOILET PARTITIONS.
- INSTALL OWNER PROVIDED LOCKERS AT LOCATIONS SHOWN. PROVIDE ANGLED TOP PANELS AND BOXED-END PANELS TO MATCH EXISTING.
- PROVIDE FINISHED LOCKER BOXED END PANEL TO MATCH EXISTING.
- PAINT EXISTING BEAM.
- PROVIDE ADDITIONAL MORTAR BED TO ACCOUNT FOR 1/2" MATT RECESS. SEE H6/A1.14hs FOR FINISH FLOOR MATERIAL.
- REPLACE EXISTING FLOOR DRAIN STRAINER. VERIFY EXACT LOCATIONS IN FIELD.
- PREP AND PAINT ENTIRE EXISTING FLOOR OF AUTO SHOP (INDICATED WITH DARK BOUNDARY LINE) WITH EPOXY PAINT.
- PROVIDE STEEL GRATING AT EXISTING TRENCH DRAIN.
- PROVIDE NEW SOLID SURFACE SEATING FOR BENCHES. SOLID SURFACE MUST BE FABRICATED TO TRANSITION AROUND EXISTING BULLNOSED CORNERS. SEE MATERIAL FINISH / COLOR SCHEDULE FOR SELECTION.
- PROVIDE NEW CARPET AND VINYL BASE. SEE MATERIAL FINISH / COLOR SCHEDULE FOR SELECTION.
- PROVIDE VEHICLE EXHAUST FLOOR PLATE. GROUT IN NEW PLATE AND FRAME FLUSH WITH FLOOR WITH MIN. 8 CONCRETE DOMED ANCHORS THROUGH TO EXISTING SLAB.
- PROVIDE NEW PORCELAIN TILE AND PAINT FINISH. SEE F7/A1.16hs AND F8/A1.16hs FOR PATTERN AND FINISH.
- FINELY GRIND EXISTING TERRAZZO FLOOR AT REMOVED ADHESIVE STRIPS, CLEAN AND SEAL.
- RE-GROUT EXISTING BRICKS ABOVE DOOR FRAME (APPROX. 5 BRICKS)

FLOOR PLAN GENERAL NOTES:

- SEE D6/A.114hs AND H6/A1.14hs FOR FINISH FLOOR PATTERNS AND MATERIALS.

Item	MATERIAL FINISH / COLOR SCHEDULE	Manufacturer	Color / Finish
08 16 00 FRP Flush Doors	FRP Doors	Special-Lite	Color: Spectra 3 FRP Smooth
08 40 00 Aluminum Entrances, Staircases, and Curtain Walls	Prefinished Doors, Curtains, and Accessories	EFDC	Color: Clear anodized
	Aluminum Doors, Curtains, and Accessories	EFDC	Color: To match sample supplied by Architect
	Stainless Steel	As specified	
08 71 00 Flush Hardware	Ball Hinges, Exterior	As specified	US200 on stainless steel
	Ball Hinges, Interior	As specified	US200 on brass or bronze
	Flush Bolts	As specified	US200 on brass or bronze
	Exit Devices	As specified	US200 on brass or bronze
	Locks	As specified	US200 on brass or bronze
	Push And Pull Plates	As specified	US200 on stainless steel
	Coordination	As specified	USP on steel
	Clips	As specified	Springed AL on cast iron or aluminum
	Protective Plates	As specified	US200 on stainless steel
	Overhead Stops	As specified	US200 on brass, bronze, or steel
	Wall Stops	As specified	US200 on brass, bronze, or steel
	Magnetic Holders	As specified	Springed SA on chrome
	Thresholds	As specified	M8 aluminum
	Weatherstrips And Sweep Strips	As specified	Clear anodized aluminum
	Key Cylinders	As specified	Gray coated on steel
	Miscellaneous	As specified	US200 on brass or bronze
08 90 00 Tile	Porcelain Wall Tile (PF71hs) - (12" x 12" x 1/2")	Crossville Color Blue	Color: A1133 Blue Seals Shies
	Porcelain Wall Tile (PF72hs) - (12" x 12" x 1/2")	Crossville Color Blue	Color: A1133 Blue Seals Shies
	Porcelain Wall Tile (PF73hs) - (6" x 6" x 1/2")	Crossville Color Blue	Color: A1133 Blue Seals Shies
	Porcelain Wall Tile (PF74hs) - (6" x 6" x 1/2")	Crossville Color Blue	Color: A1133 Blue Seals Shies
	Porcelain Wall Tile (PF75hs) - (6" x 6" x 1/2")	TEC AccuColor	Color: 608 Snow Gray
	Porcelain Floor Tile (PF76hs) - (12" x 12" x 1/2")	American Olean	Color: A04 Light Smoke Speckled
	Porcelain Floor Tile (PF77hs) - (12" x 12" x 1/2")	American Olean	Color: A109 Supreme Gray Speckled
	Grout - Porcelain Floor Tile	TEC AccuColor	Color: 604 Oceanview Gray
	Grout - Porcelain Wall Tile	American Olean	Color: 0900 White AD
	Grout - Ceramic Wall Tile (CF71hs) - (6" x 6" x 1/2")	American Olean	Color: 0900 Supreme Gray AD
	Grout - Ceramic Wall Tile #1	TEC AccuColor	Color: 610 Bright White
	Grout - Ceramic Wall Tile #2	TEC AccuColor	Color: 604 Oceanview Gray
09 05 00 Resilient Flooring	VCT 1 - (6" x 6")	Armstrong	Standard EXCELON # 12316 Justice White
	VCT 2 - (6" x 6")	Armstrong	Standard EXCELON # 12322 Justice Blue
	Vinyl Base	Johannes	Color: 84 Blue Jeans
09 05 10 Solid Surface Fabrications	Solid Surfacing	Corian	Color: Cobalt (3)
09 08 00 Carpet	Carpet 1	Shaw Contract Group	Pattern: Color: 75-402 Pinyon (random installation)
	Transition Strips	Mercer	Color: As selected by Architect from full color list
09 91 00 Paint	PT 48-Interior HM Doors	Sherrill Williams	Color: As selected by Architect from full color list
	PT 5-Interior Misc. Metals	Sherrill Williams	Color: As selected by Architect from full color list
	PT 7-Walls	Sherrill Williams	Color: SW 7000 White
	PT 8-Exterior Canopy	Sherrill Williams	Color: SW 7000 Extra White
	PT 9-College (Boy's Locker Room)	Sherrill Williams	Color: SW 7000 Extra White
10 11 00 Visual Display Boards	Markboard	Polyvision	Color and Glass: White
	Track Strip	As specified	Color: Clear
	Anodized Aluminum Trim	As specified	Color: Clear
10 21 10 Solid Plastic Toilet Partitions	Toilet Partitions	Capitol Partitions	Color: 387 Blue

I hereby certify that this plan, specification or report was prepared by me or under my direct supervision and that I am a duly licensed ARCHITECT

under the laws of the State of MICHIGAN

DANIAL KRITTA
Registration Number 1501047592 Date 10.31.2012

Description	Revisions	Date	Num

Comm: 04/02/20
Date: 04/16/2012
Drawn: LMP
Check: MHC



HIGH SCHOOL - UPPER LEVEL FLOOR PLAN, ELEVATIONS, SCHEDULE

Scale: As indicated

A1.12hs