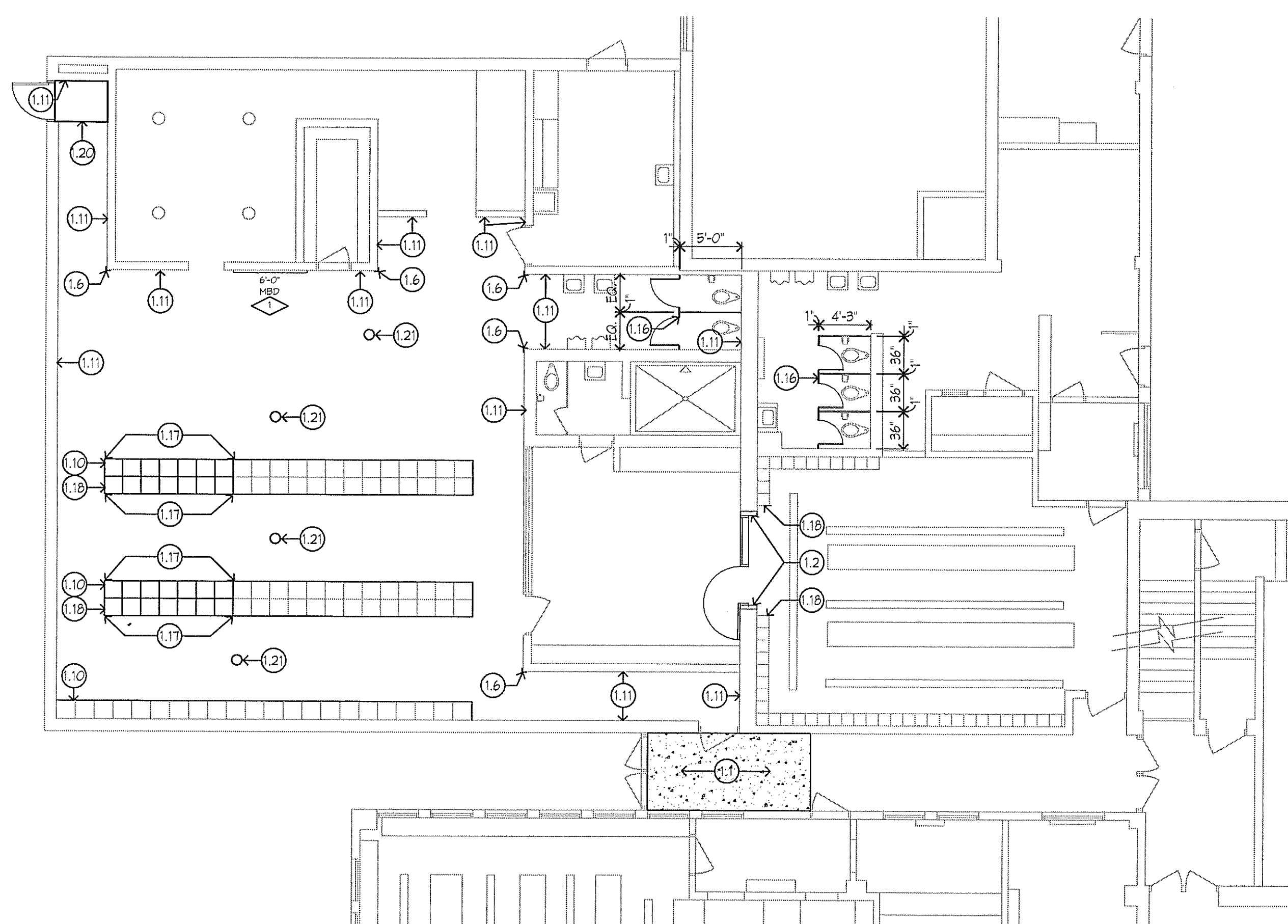


C1 MAIN LEVEL DEMOLITION PLAN - BOYS LOCKER ROOM
1/8" = 1'-0"

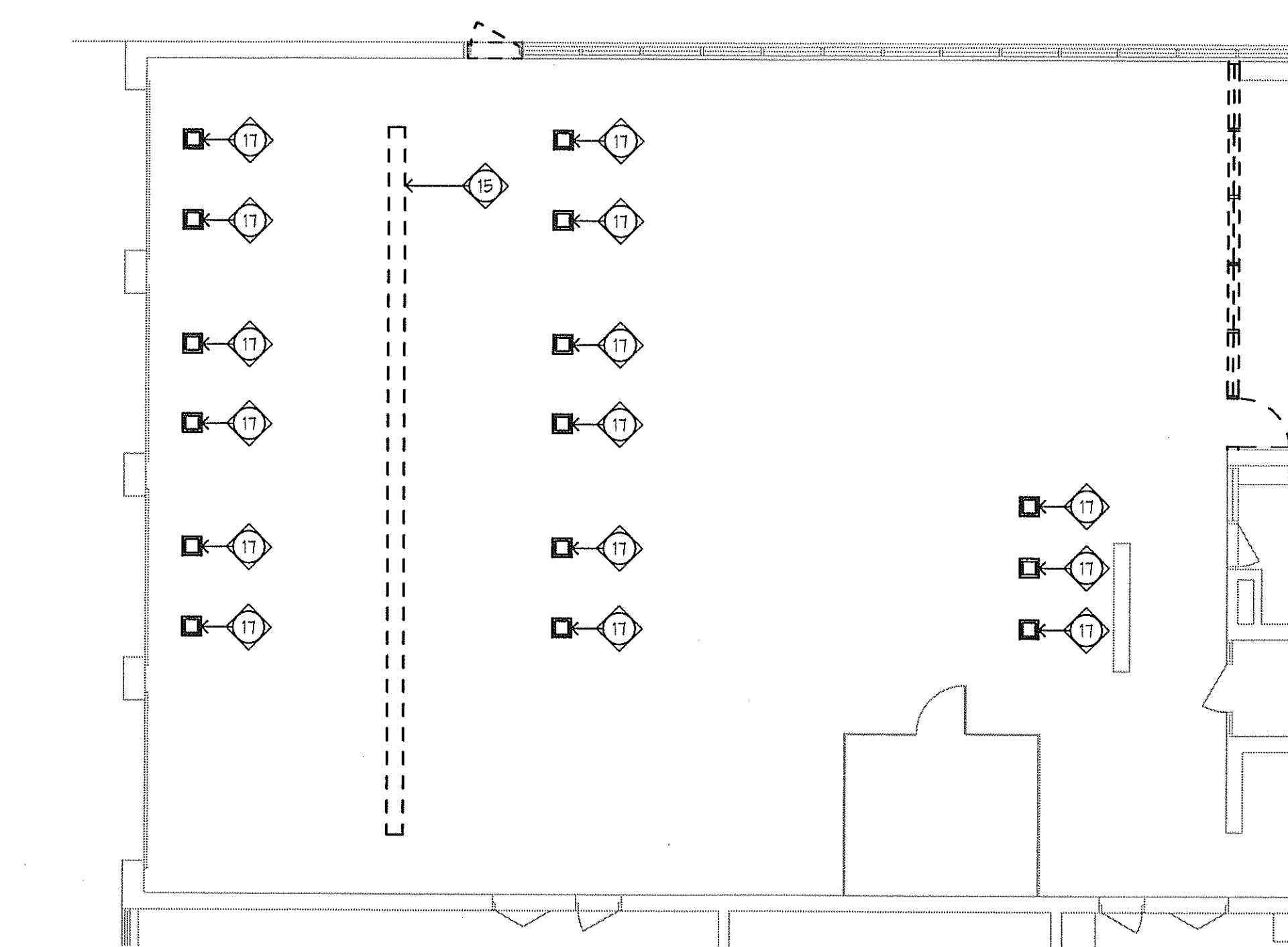
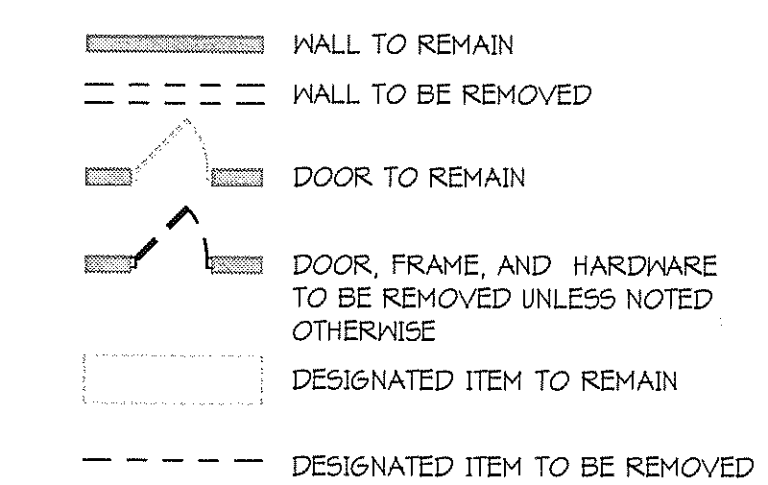


C2 MAIN LEVEL FLOOR PLAN - BOYS LOCKER ROOM
1/8" = 1'-0"

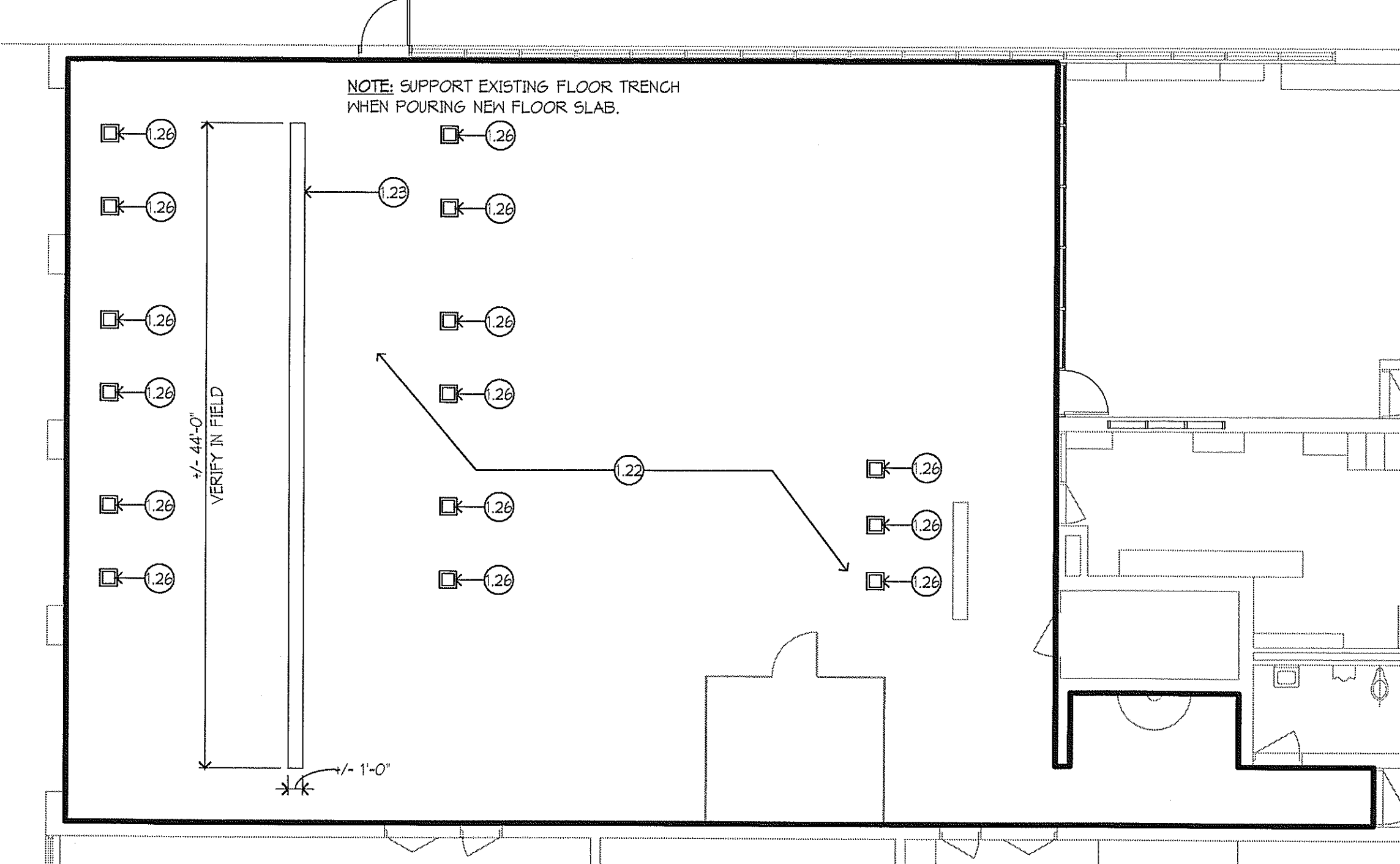
DEMOLITION PLAN KEY NOTES:

- 1 REMOVE EXISTING RECESSED FLOOR MAT TRIM AND ANY ADJACENT LUMBER TRIM PIECES.
- 2 REMOVE EXISTING CONCRETE SLAB TO SUB BASE (INCLUDING PORCELAIN FLOOR TILE AS OCCURS) TO THE EXTENTS SHOWN.
- 3 REMOVE EXISTING CONCRETE LOCKER CURB TO THE EXTENTS SHOWN. REMOVAL TO BE FLUSH WITH EXISTING CONCRETE FLOOR LINE TO PROVIDE FOR CONSISTENT APPLICATION OF NEW PORCELAIN FLOOR TILE. AT PARTIAL REMOVAL, REMOVE TO NEAREST LOCKER JOINT. WHERE ROUGH ENDS REMAIN EXPOSED, PROVIDE SMOOTH FINISHED CUT.
- 4 REMOVE EXISTING MASONRY WALL AND COVERED GLAZED TILE BASE AT LOCATION SHOWN FOR THE INSTALLATION OF NEW DOOR AND FRAME. OVERCUT OPENING 4" ON EACH SIDE. SEE NEW WORK.
- 5 REMOVE EXISTING CERAMIC TILE FLOOR TO THE EXTENTS SHOWN. REMOVE TO THE NEAREST GROUT JOINT.
- 6 SANCUT EXISTING GLAZED TILE BASE FROM ENTIRE PERIMETER OF EXISTING CONCRETE LOCKER CURB AT FLOOR.
- 7 REMOVE EXISTING NON-SLIP ADHESIVE STRIPS FROM EXISTING TERRAZZO FLOORING. AREA INDICATED REPRESENTS APPROXIMATE LOCATIONS ONLY.
- 8 REMOVE EXISTING VINYL BASE AND VGT FLOORING TO THE EXTENTS SHOWN.
- 9 REMOVE EXISTING VINYL BASE.
- 10 REMOVE EXISTING METAL TOILET PARTITIONS INCLUDING ALL ASSOCIATED ANCHORS AND HARDWARE. ALL PARTITION MOUNTED TOILET ACCESSORIES TO BE TURNED OVER TO THE OWNER.
- 11 REMOVE EXISTING MARBLE BENCH TOPS.
- 12 REMOVE EXISTING LOCKERS TO NEAREST SECTION. LOCKERS TO BE TURNED OVER TO THE OWNER.
- 13 REMOVE EXISTING BENCH, ASSOCIATED SUPPORTS AND HARDWARE FROM EXISTING CONCRETE LOCKER CURB.
- 14 CUT AND REMOVE FIRST COURSE OF EXISTING COVERED WALL TILE THE ENTIRE LENGTH OF WALL INDICATED. SEE DETAIL D7/A1.16hs.
- 15 CUT AND REMOVE EXISTING 1"(WIDE) X 2"(LONG) X 1"(THICK) STEEL GRATINGS CURRENTLY "PINCHED" INTO GRATINGS.
- 16 REMOVE CERAMIC TILE FROM EXISTING COLUMN AND ATTACHED MOOD PANELS AS OCCURS. (TILE HEIGHT IS APPROXIMATELY 3'-3" A.F.F.)
- 17 CHIP OUT EXISTING 14" X 14" VEHICLE EXHAUST FLOOR PLATE AND FRAME FROM EXISTING CONCRETE FLOOR.
- 18 REMOVE EXISTING CARPET, VINYL BASE AND ASSOCIATED ADHESIVES.

DEMOLITION LEGEND



F1 MAIN LEVEL DEMOLITION PLAN - AUTOMOTIVE AREA
1/8" = 1'-0"



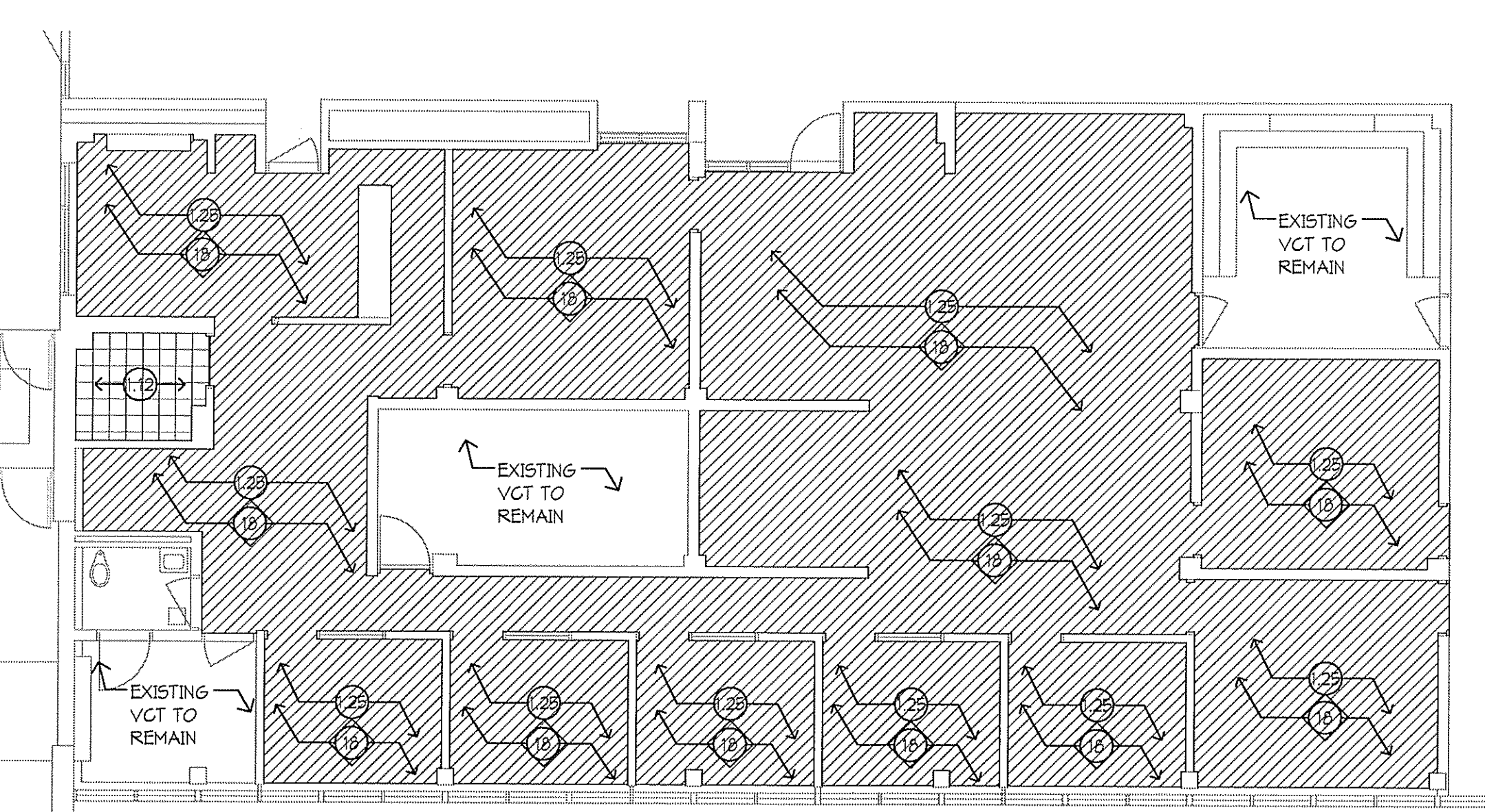
F2 MAIN LEVEL FLOOR PLAN - AUTOMOTIVE AREA
1/8" = 1'-0"

FLOOR PLAN KEY NOTES:

- 11 INFILL EXISTING HALK OFF MATT RECESSES WITH SELF LEVELING CEMENT BASE UNDERLAYMENT LEVEL WITH EXISTING CONCRETE FLOORING. SEE D6/A1.14hs FOR FINISH FLOOR MATERIAL.
- 12 PROVIDE 4" BULLNOSED SOAP BLOCK AT RAW EDGES, PAINT TO MATCH EXISTING WALL.
- 13 PROVIDE NEW LINTEL ABOVE DOOR. SEE LINTEL SCHEDULE.
- 14 PROVIDE NEW 2'-10" X 2'-10" HDPE FLOOR GRATE. VERIFY EXACT SIZE IN FIELD.
- 15 PROVIDE NEW 6' X 6' METAL GRATE WITH STRUCTURAL BEAM SUPPORTS. VERIFY EXACT SIZE IN FIELD.
- 16 PROVIDE NEW STAINLESS STEEL CORNER GUARD, FULL HEIGHT.
- 17 PROVIDE NEW TEMPERED GLASS PANELS AT EXISTING ALUMINUM GUARD RAIL.
- 18 FILL ALL HOLES IN UNDERSIDE OF EXISTING PLASTER CANOPY.
- 19 PROVIDE NEW 2'X2' FLOOR TILE. SEE MATERIAL FINISH / COLOR SCHEDULE FOR SELECTION.
- 20 PROVIDE NEW COVERED GLAZED TILE BASE (GT#2hs) AT ENTIRE PERIMETER OF CONCRETE LOCKER CURB. SEE MATERIAL FINISH / COLOR SCHEDULE FOR SELECTION.
- 21 PROVIDE NEW COVERED TILE BASE (GT#1hs) AT ENTIRE LENGTH OF WALL. CUT TO FIT. SEE MATERIAL FINISH / COLOR SCHEDULE FOR SELECTION.
- 22 PROVIDE NEW VGT FLOORING AND VINYL BASE. SEE MATERIAL FINISH / COLOR SCHEDULE FOR SELECTIONS.
- 23 PREPARE ENTIRE CEILING SURFACE (INCLUDING LOOSE / FLAKING AREAS OF EXISTING PAINT) TO RECEIVE NEW PAINT. PAINT ALL CEILING SURFACES AS HATCHED ON REFLECTED CEILING PLAN. SEE MATERIAL FINISH / COLOR SCHEDULE FOR SELECTION.
- 24 PREP AND PAINT UNDERSIDE AND CURVED FASCIA OF CANOPY. SEE MATERIAL FINISH / COLOR SCHEDULE FOR SELECTION.
- 25 PROVIDE NEW PORCELAIN TILE AT POOL BENCH FRONTS. SEE ELEVATION H1/A1.14hs FOR PATTERN AND MATERIAL.
- 26 PROVIDE NEW SOLID PLASTIC TOILET PARTITIONS AND DOORS. VERIFY IN FIELD EXACT LOCATIONS OF TOILETS AND TOILET PARTITIONS.
- 27 INSTALL OWNER PROVIDED LOCKERS AT LOCATIONS SHOWN. PROVIDE ANGLED TOP PANELS AND BOXED-END PANELS TO MATCH EXISTING.
- 28 PROVIDE FINISHED LOCKER BOXED END PANEL TO MATCH EXISTING.
- 29 PAINT EXISTING BEAM.
- 30 PROVIDE ADDITIONAL MORTAR BED TO ACCOUNT FOR 1/2" MATT RECESS. SEE H6/A1.14hs FOR FINISH FLOOR MATERIAL.
- 31 REPLACE EXISTING FLOOR DRAIN STRAINER. VERIFY EXACT LOCATIONS IN FIELD.
- 32 PREP AND PAINT ENTIRE EXISTING FLOOR OF AUTO SHOP (INDICATED WITH DARK BOUNDARY LINE) WITH EPOXY PAINT.
- 33 PROVIDE STEEL GRATINGS AT EXISTING TRENCH DRAIN.
- 34 PROVIDE NEW SOLID SURFACE SEATING FOR BENCHES. SOLID SURFACE MUST BE FABRICATED TO TRANSITION AROUND EXISTING BULLNOSED CORNERS. SEE MATERIAL FINISH / COLOR SCHEDULE FOR SELECTION.
- 35 PROVIDE NEW CARPET AND VINYL BASE. SEE MATERIAL FINISH / COLOR SCHEDULE FOR SELECTIONS.
- 36 PROVIDE VEHICLE EXHAUST FLOOR PLATE. GROUT IN NEW PLATE AND FRAME FLUSH WITH FLOOR WITH MIN. 2" CONCRETE DOME ANCHORS THROUGH TO EXISTING SLAB.
- 37 PROVIDE NEW PORCELAIN TILE AND PAINT FINISH. SEE F7/A1.16hs AND F8/A1.16hs FOR PATTERN AND FINISH.
- 38 FINELY GRIND EXISTING TERRAZZO FLOOR AT REMOVED ADHESIVE STRIPS, CLEAN AND SEAL.
- 39 RE-GROUT EXISTING BRICKS ABOVE DOOR FRAME (APPROX. 5 BRICKS).

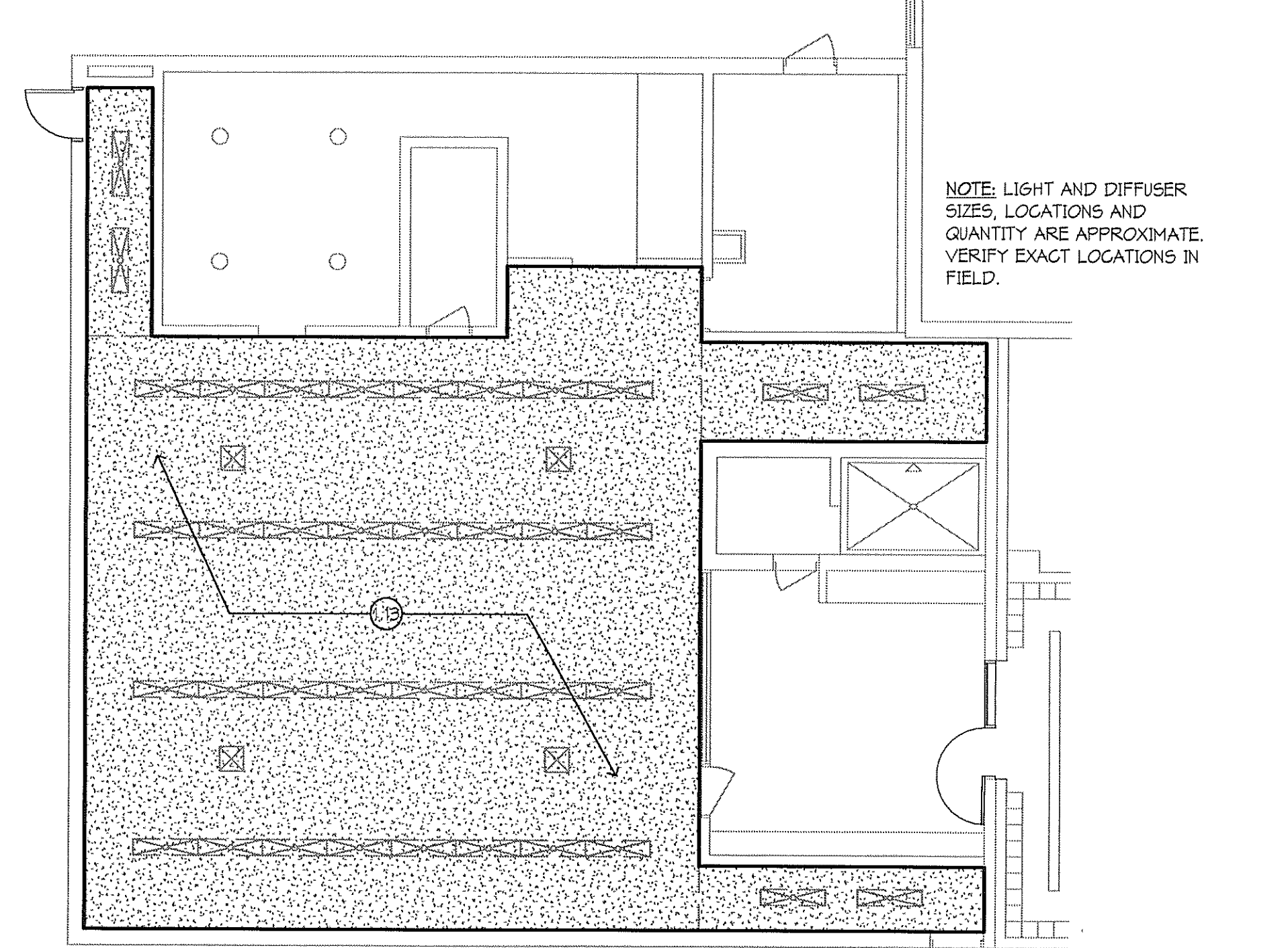
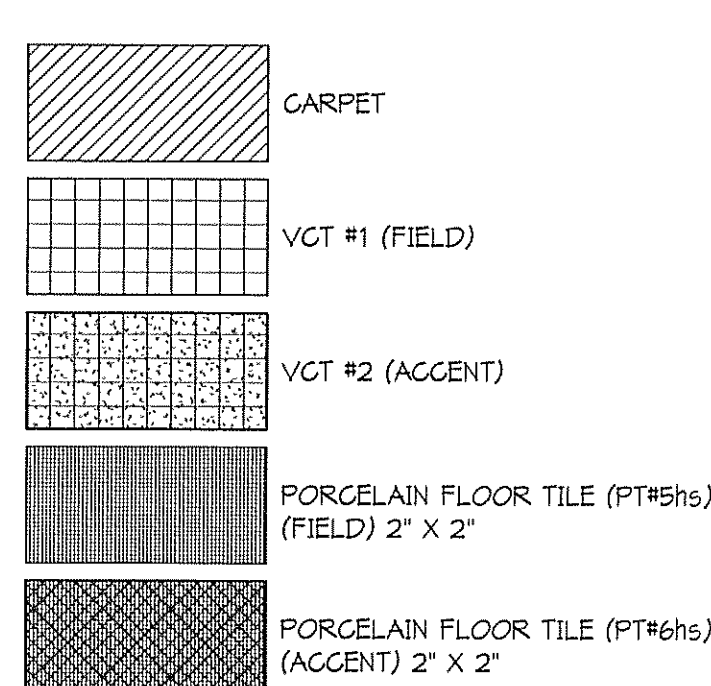
FLOOR PLAN GENERAL NOTES:

1. SEE D6/A1.14hs AND H6/A1.14hs FOR FINISH FLOOR PATTERNS AND MATERIALS.



H1 MAIN LEVEL FLOOR PLAN - MAIN OFFICE AREA
1/8" = 1'-0"

MATERIAL KEY



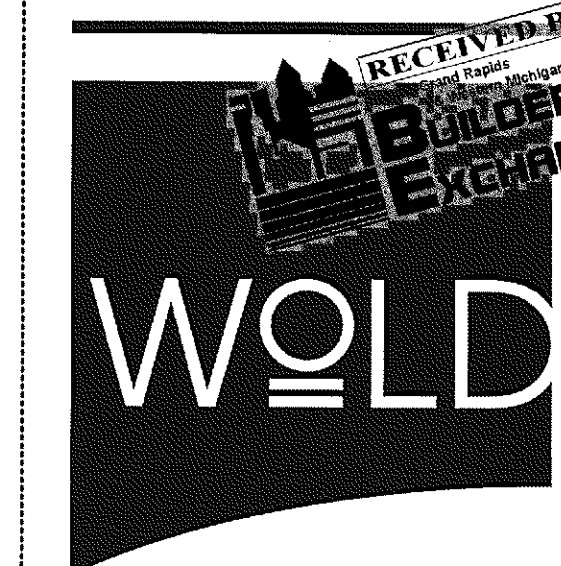
H2 REFLECTED CEILING PLAN - BOYS LOCKER ROOM
1/8" = 1'-0"

H3 MAIN LEVEL FLOOR PLAN - EXTERIOR @ GRATE
1/8" = 1'-0"

2012 REDFORD UNION HIGH SCHOOL IMPROVEMENTS PROJECT

17711 KINLOCH ST.
REDFORD, MI 48240

REDFORD UNION SCHOOL DISTRICT
18499 BEECH DALY ROAD
REDFORD, MI 48240



architects
engineers
www.woldae.com

202 East Third Street
Suite Two Hundred
Royal Oak, MI 48067
Tel: 248.284.0611
Fax: 248.284.0615
mail@woldae.com

I hereby certify that this plan, specification or report was prepared by me or under my direct supervision and that I am a duly licensed ARCHITECT under the laws of the State of MICHIGAN

DANIEL KRITTA
1301047542 Date 10/31/2012

Description	Revisions	Date	Num

Client: 094020
Date: 04/18/2012
Drawn: LMF
Check: HWK

HIGH SCHOOL - ENLARGED FLOOR PLANS

Scale: 1/8" = 1'-0"

A1.13hs