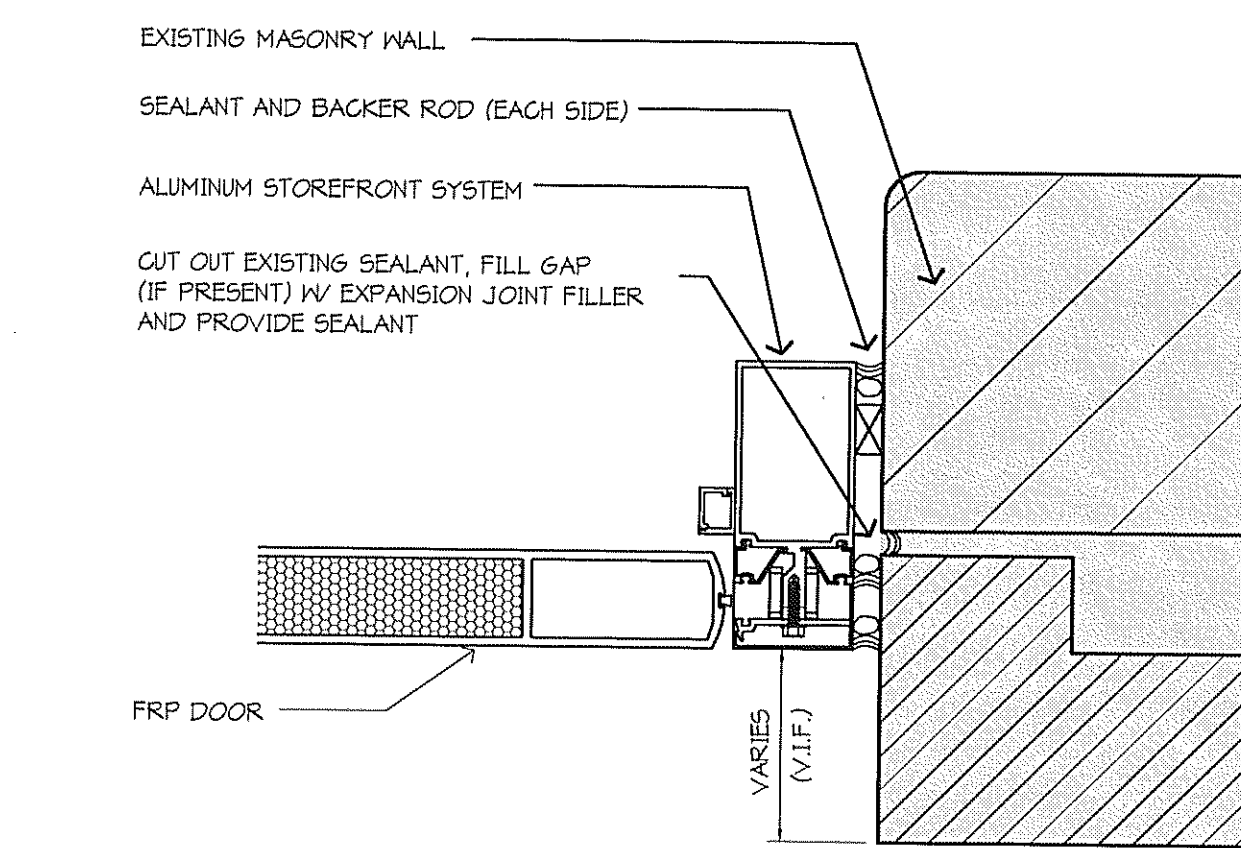
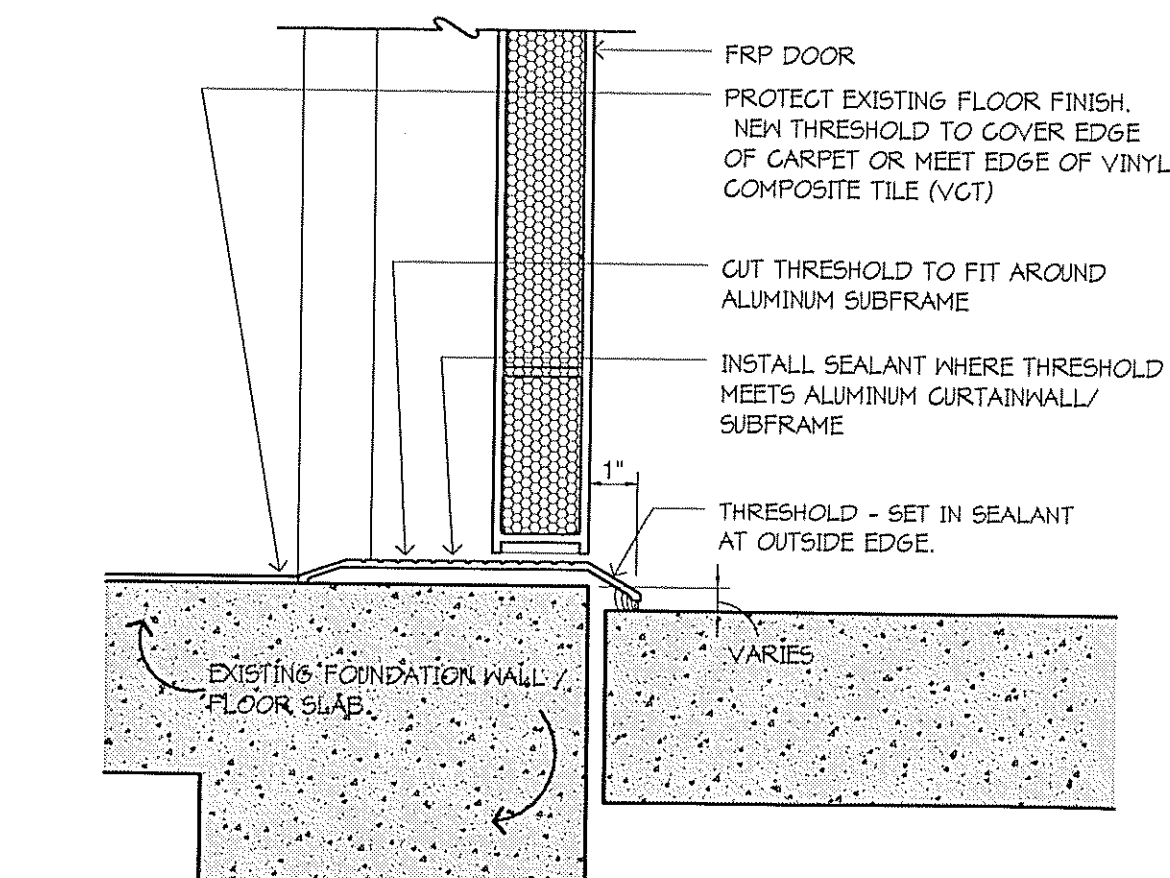


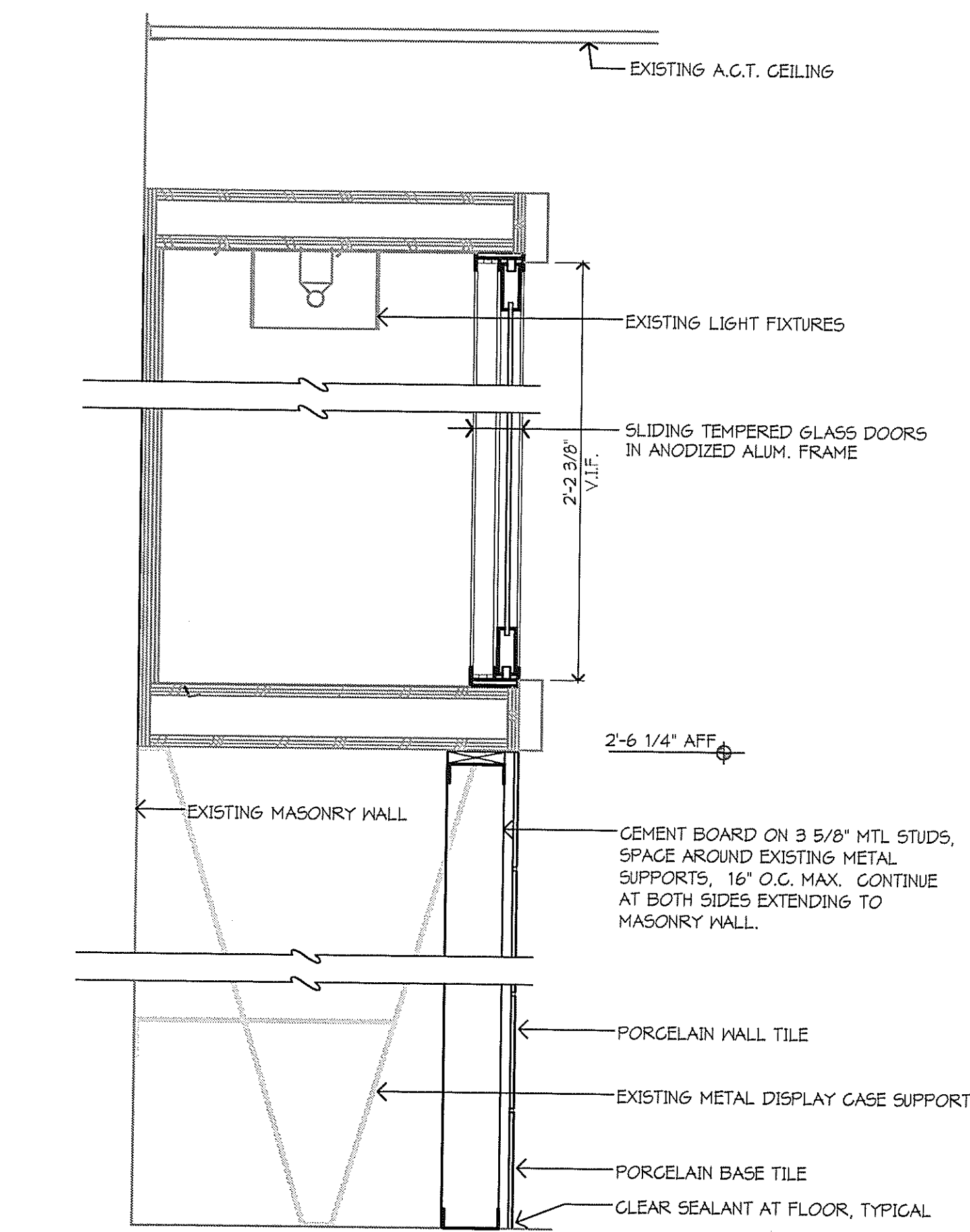
B4 HEAD DETAIL
3" x 1'-0"



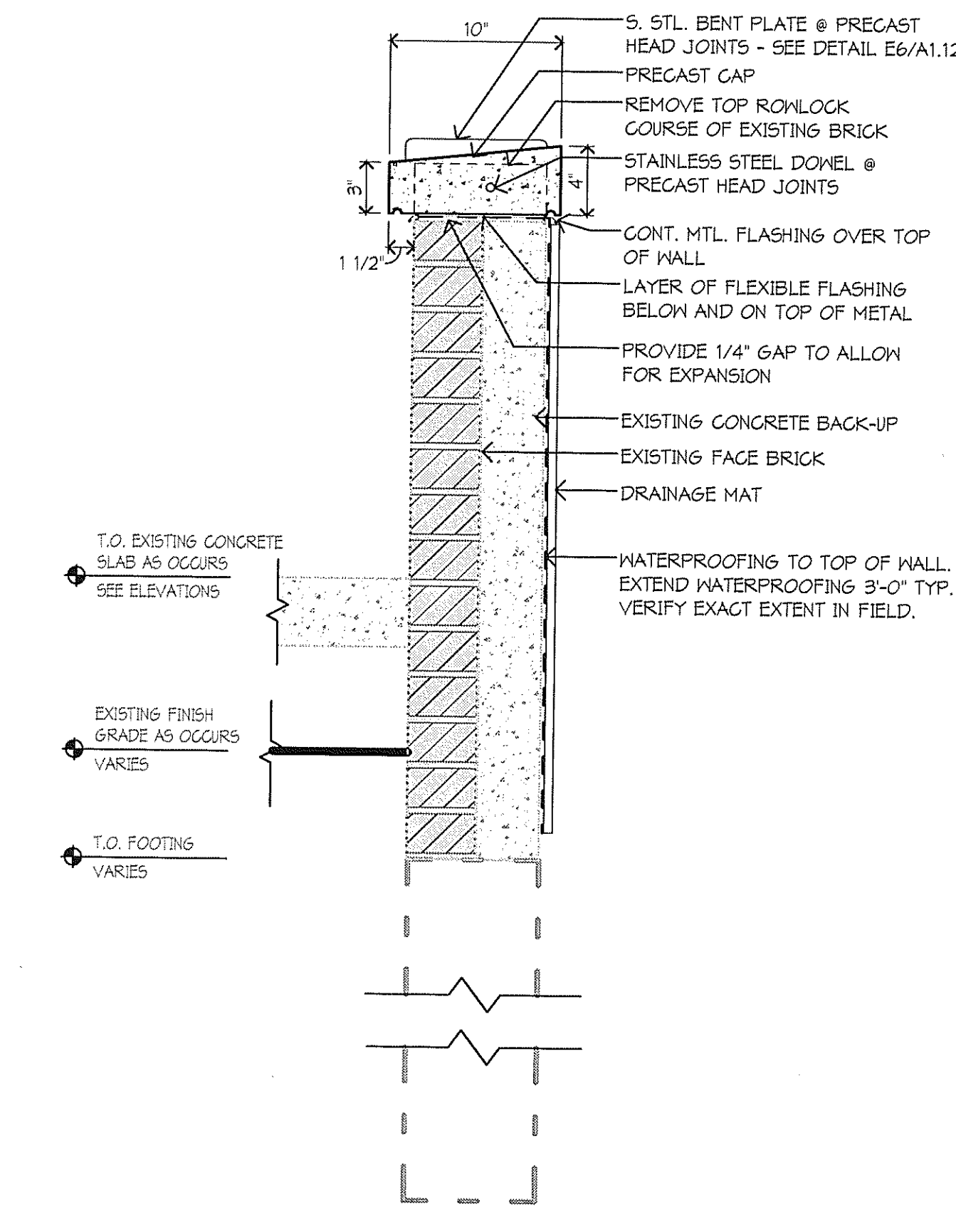
C4 JAMB DETAIL
3" x 1'-0"



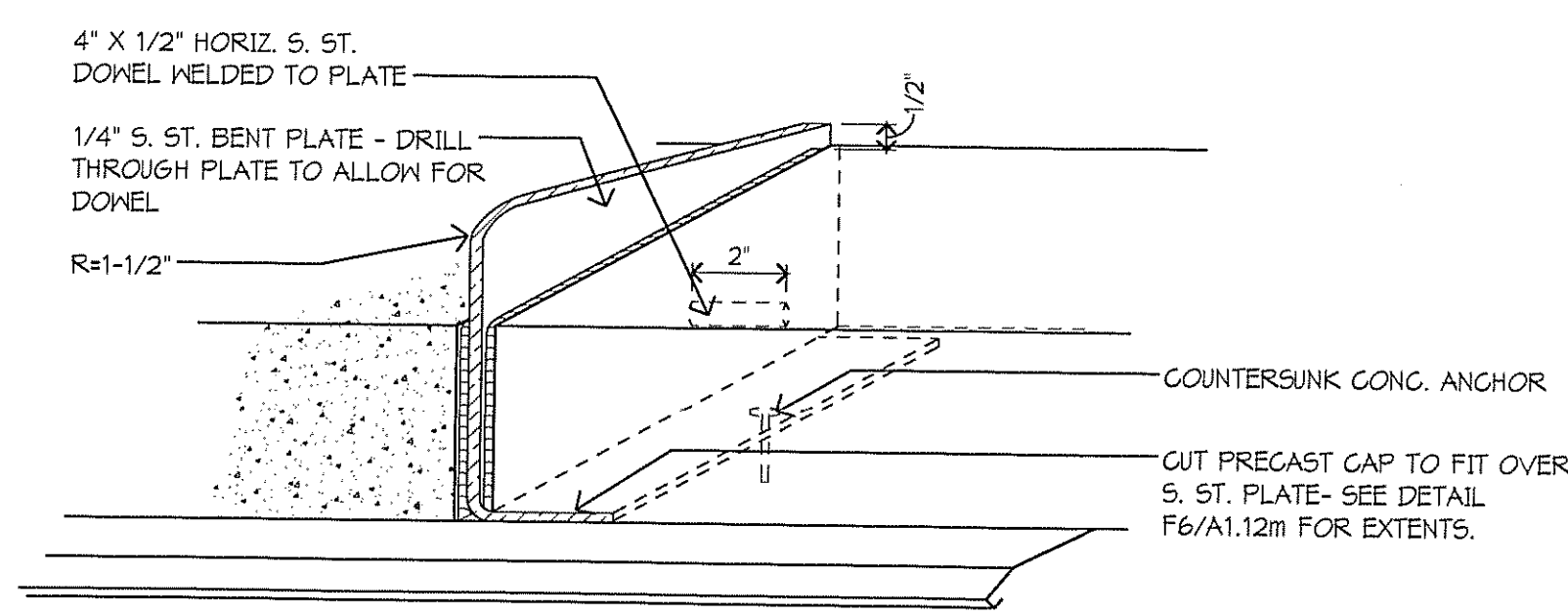
E3 SILL DETAIL
3" x 1'-0"



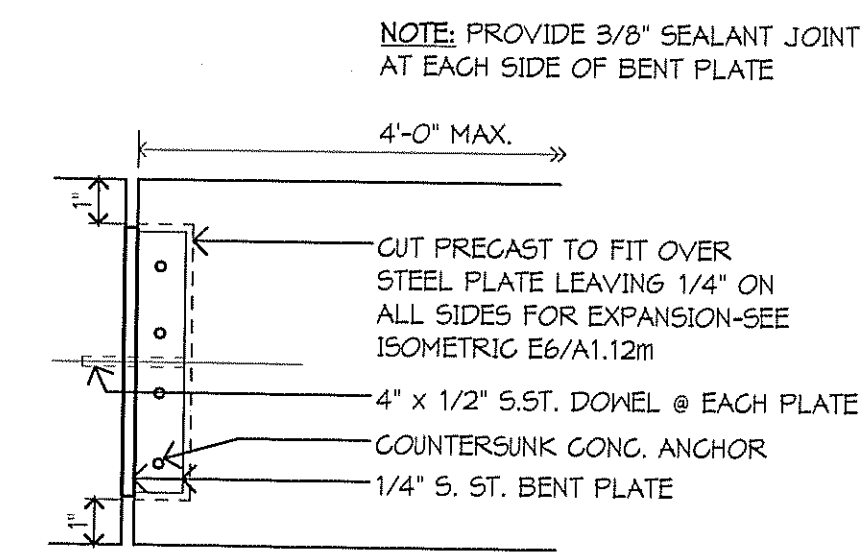
H4 SECTION @ DISPLAY CASE
1 1/2" x 1'-0"



C6 SECTION @ PLANTER
1 1/2" x 1'-0"

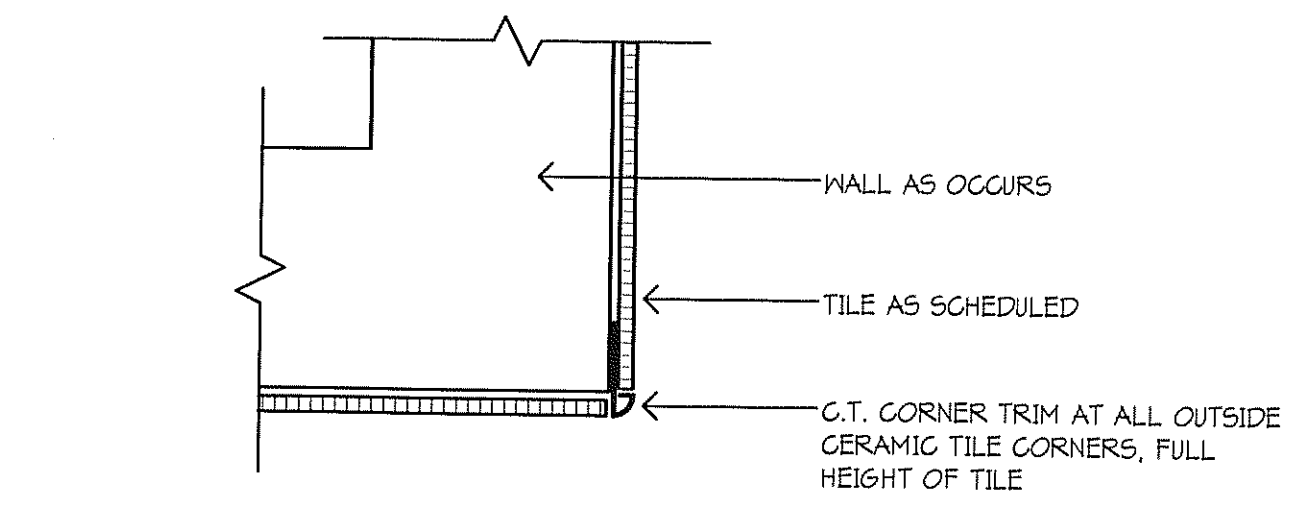
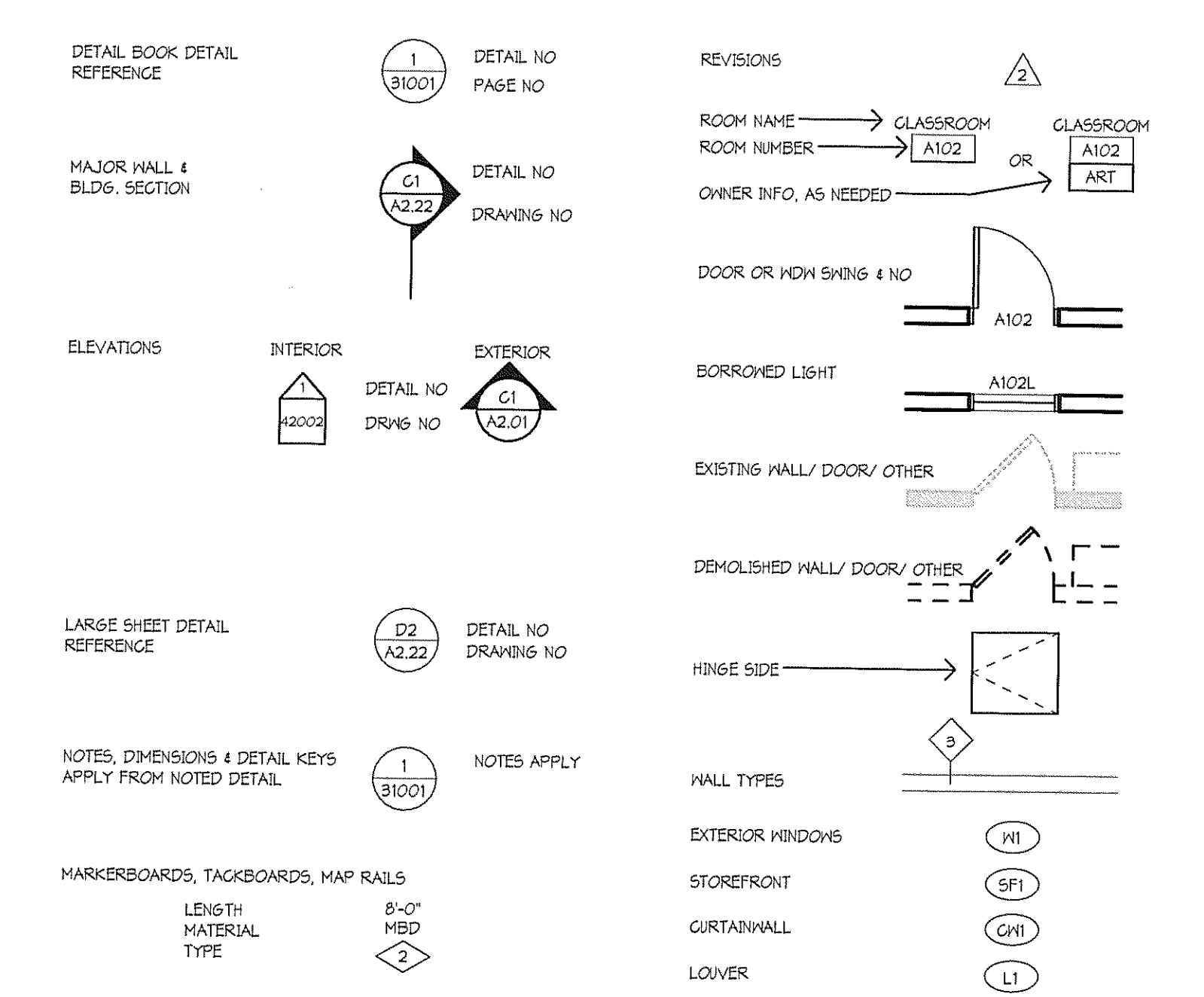


E6 PRECAST COPING ISO
3" x 1'-0"

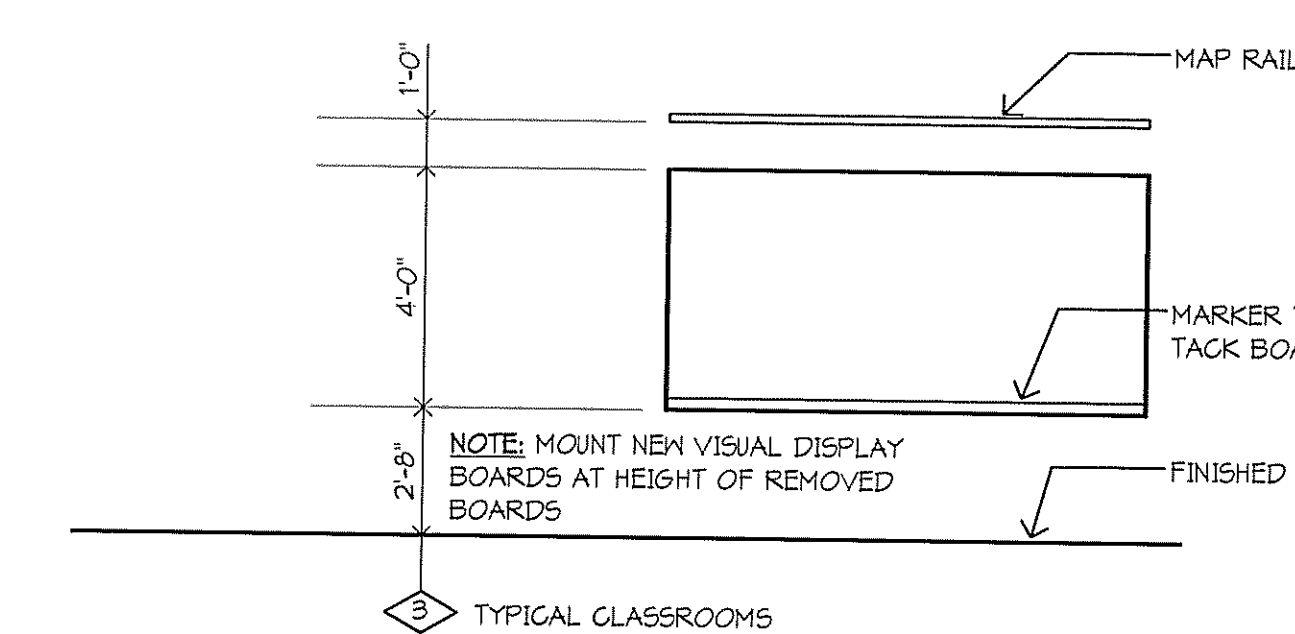


F6 PRECAST CAP PLAN
3" x 1'-0"

Item	Manufacturer	Color/Finish
04 20 00 Unit Masonry	Mortar Cement	As specified
04 14 00 Wood Doors	Primed Oak Wood Door	Color:
04 16 00 FRP Flush Doors	FRP Doors	Color: Spectra 3 FRP Sealant
04 40 00 Aluminum Entrances, Showers, and Curtain Walls	Primed Glass Curtainwalls And Accessories	Color: Clear smooth
04 40 00 Aluminum Entrances, Showers, and Curtain Walls	Finished Glass Curtainwalls And Accessories	Color: To match sample supplied by Architect
06 71 00 Finish Hardware	Ball Hinges-Exterior	As specified
06 71 00 Finish Hardware	Ball Hinges-Interior	As specified
06 71 00 Finish Hardware	Flush Bolts	As specified
06 71 00 Finish Hardware	Exit Devices	As specified
06 71 00 Finish Hardware	Locks	As specified
06 71 00 Finish Hardware	Push And Pull Plates	As specified
06 71 00 Finish Hardware	Guaranties	As specified
06 71 00 Finish Hardware	Closets	As specified
06 71 00 Finish Hardware	Protective Plates	As specified
06 71 00 Finish Hardware	Overhead Stairs	As specified
06 71 00 Finish Hardware	Wall Stops	As specified
06 71 00 Finish Hardware	Magnetic Holders	As specified
06 71 00 Finish Hardware	Transoms	As specified
06 71 00 Finish Hardware	Weatherstrips And Sneeze Strips	As specified
06 71 00 Finish Hardware	Key Cabinets	As specified
06 71 00 Finish Hardware	Miscellaneous	As specified
06 30 00 Tile	Porcelain Wall Tile (PT #14) - 6" x 6" Field	Color: A113 Blue Suede Sliver
06 30 00 Tile	Porcelain Wall Tile (PT #20) - 6" x 6" Accent	Color: A110 Silky
06 30 00 Tile	Porcelain Wall Tile (PT #20) - 6" x 12" Grand Blue	Color: A110 Silky
06 30 00 Tile	Grout: Porcelain Wall Tile	Color: 905 Dove Gray
06 91 00 Paint	P1 6A-Walls	Color: As specified by Architect from full color file to match existing
10 11 00 Visual Display Boards	Markerboard	Color and Glass: White
10 11 00 Visual Display Boards	Taskboards	Color: Clear
10 11 00 Visual Display Boards	Android Aluminum Trim	Color: Clear



F8 PLAN AT CORNER TRIM
3" x 1'-0"



H2 MOUNTING TYPES
1/4" x 1'-0"

- TACK BOARD / MARKER BOARD GENERAL NOTES:**
- WHEN MARKER BOARDS AND TACK BOARDS ARE PLACED IN A SERIES, A CONTINUOUS MAP RAIL SHOULD BE PROVIDED OVER MARKERBOARDS / TACKBOARDS FROM END TO END.
 - MARKER BOARDS, TACK BOARDS AND TACKSTRIPS ARE TO BE CENTERED ON A WALL OR WITHIN A SPACE TYPICALLY, UNLESS OTHERWISE NOTED. SEE INTERIOR ELEVATIONS FOR TYPICAL LAYOUTS.
 - OMIT MARKER TRAY AT GYMNASIUMS AND WHERE NOTED.
 - WHEN FACE OF MARKER BOARD CANNOT BE MANUFACTURED IN ONE CONTINUOUS SHEET, THE SPINE IS TO BE LOCATED NEARER TO ONE SIDE AS POSSIBLE.

2012 MCGOWAN ELEMENTARY IMPROVEMENTS

18255 KINLOCH ST.
REDFORD, MI 48240

REDFORD UNION SCHOOL DISTRICT
18499 BEECH DALY ROAD
REDFORD UNION, MI 48240

RECEIVED BY
BUILDERS
EXCHANGE

WOLD

architects
engineers
www.woldae.com

202 East Third Street
Suite Two Hundred
Royal Oak, MI 48067

tel 248 284 0511
fax 248 284 0515
m3110@woldae.com

I hereby certify that this plan, specification or report was prepared by me or under my direct supervision and that I am a duly Licensed ARCHITECT under the laws of the State of MICHIGAN.

DANIEL KRITITA
Registration Number 19010475942 Date 10.31.2012

Description	Revisions	Date	Num

Comm: 04A034
Date: 4/18/2012
Drawn: LMP
Check: MHC

MCGOWAN ELEMENTARY SCHOOL - DETAILS, SCHEDULE

Scale: As Indicated

A1.12m