

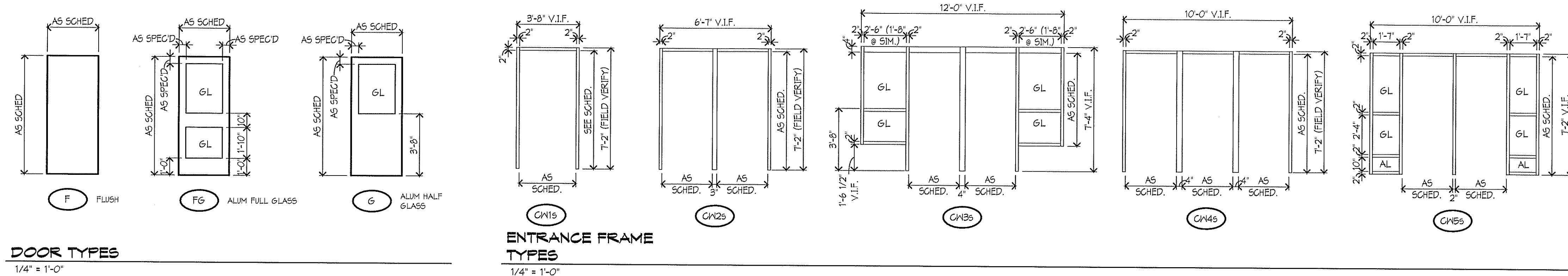
DOOR NO	DOOR / OPENING TYPE	QTY	WIDTH	HEIGHT	MATERIAL	DOOR / OPENING SCHEDULE			MOUNTING CONDITIONS			HDM	REMARKS
						LAB	FRAME	GL	HEAD	JAMB	SILL		
A101A	FG	1	3'-0"	7'-0"	FRP	---	CH 56	---	ALUM.	B7VA1115	D7VA1115	4	1, 2
A101B	FG	1	3'-0"	7'-0"	FRP	---	CH 56	---	ALUM.	B7VA1115	D7VA1115	2	1, 2
A129A	FG	1	3'-0"	7'-0"	FRP	---	CH 46	---	ALUM.	B7VA1115	D7VA1115	2	1, 2
A129B	FG	1	3'-0"	7'-0"	FRP	---	CH 46	---	ALUM.	B7VA1115	D7VA1115	2	1, 2
B104	FG	1	3'-0"	7'-0"	FRP	---	CH 19	---	ALUM.	B7VA1115	D7VA1115	6	1, 2
B110	FG	2	3'-0"	7'-0"	FRP	---	CH 26	---	ALUM.	B7VA1115	D7VA1115	8	1, 2
G111A	FG	1	3'-0"	7'-0"	FRP	---	CH 36	---	ALUM.	B7VA1115	D7VA1115	2	1, 2
G111B	FG	1	3'-0"	7'-0"	FRP	---	CH 36	---	ALUM.	B7VA1115	D7VA1115	2	1, 2
G120A	FG	1	3'-0"	7'-0"	FRP	---	CH 36 SIM.	---	ALUM.	B7VA1115	D7VA1115	4	1, 2
G120B	FG	1	3'-0"	7'-0"	FRP	---	CH 36 SIM.	---	ALUM.	B7VA1115	D7VA1115	2	1, 2

**DOOR SCHEDULE REMARKS**

1. SCHEDULED DOOR SIZE IS APPROXIMATE. CONTRACTOR TO FIELD VERIFY EXISTING ROUGH OPENING AND PROVIDE DOOR AND FRAME TO MATCH ROUGH OPENINGS.

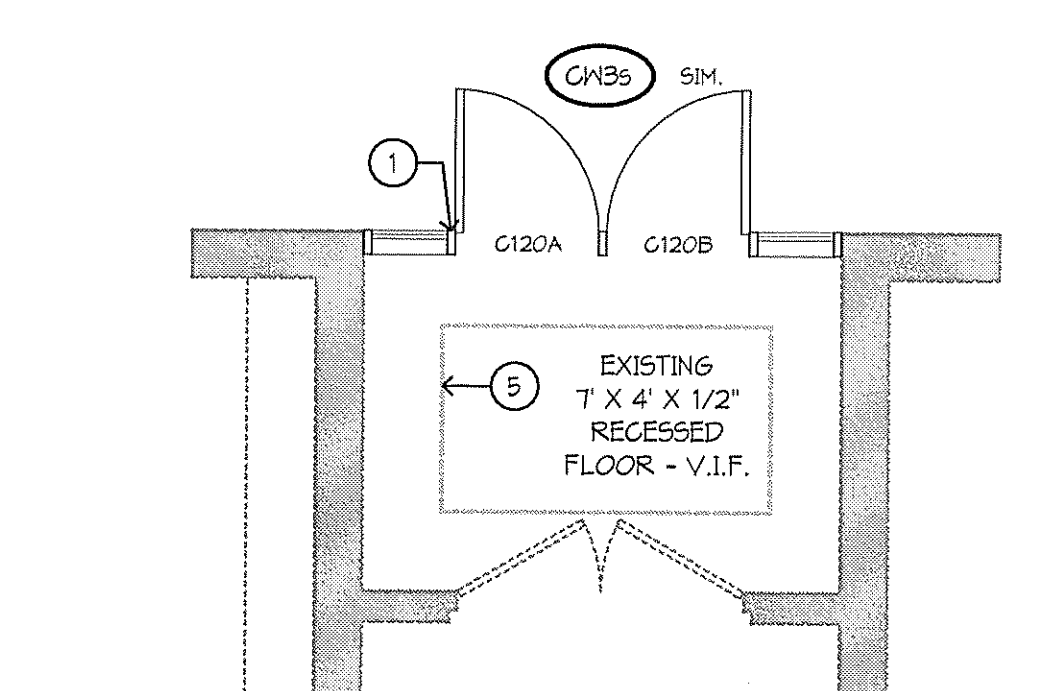
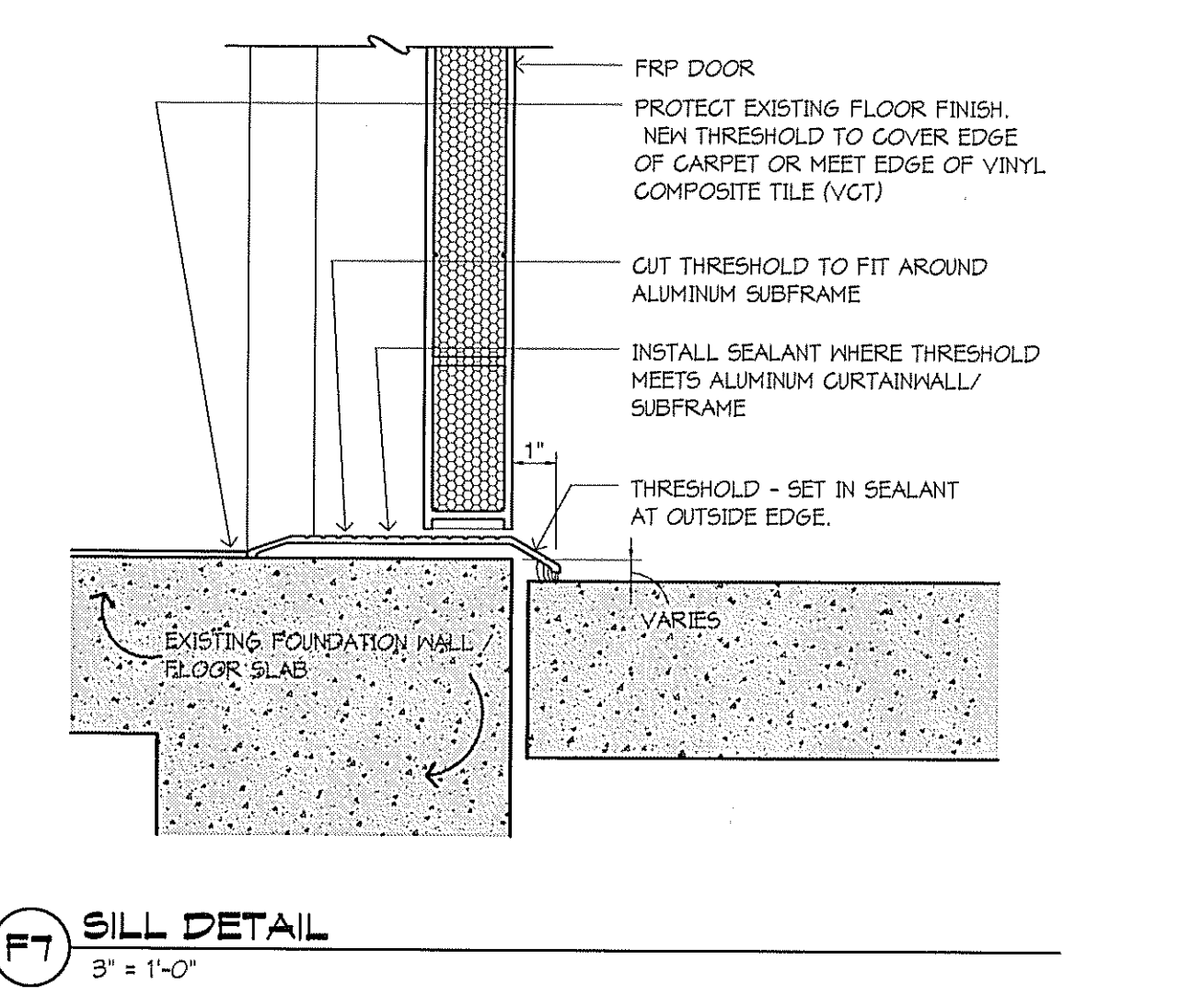
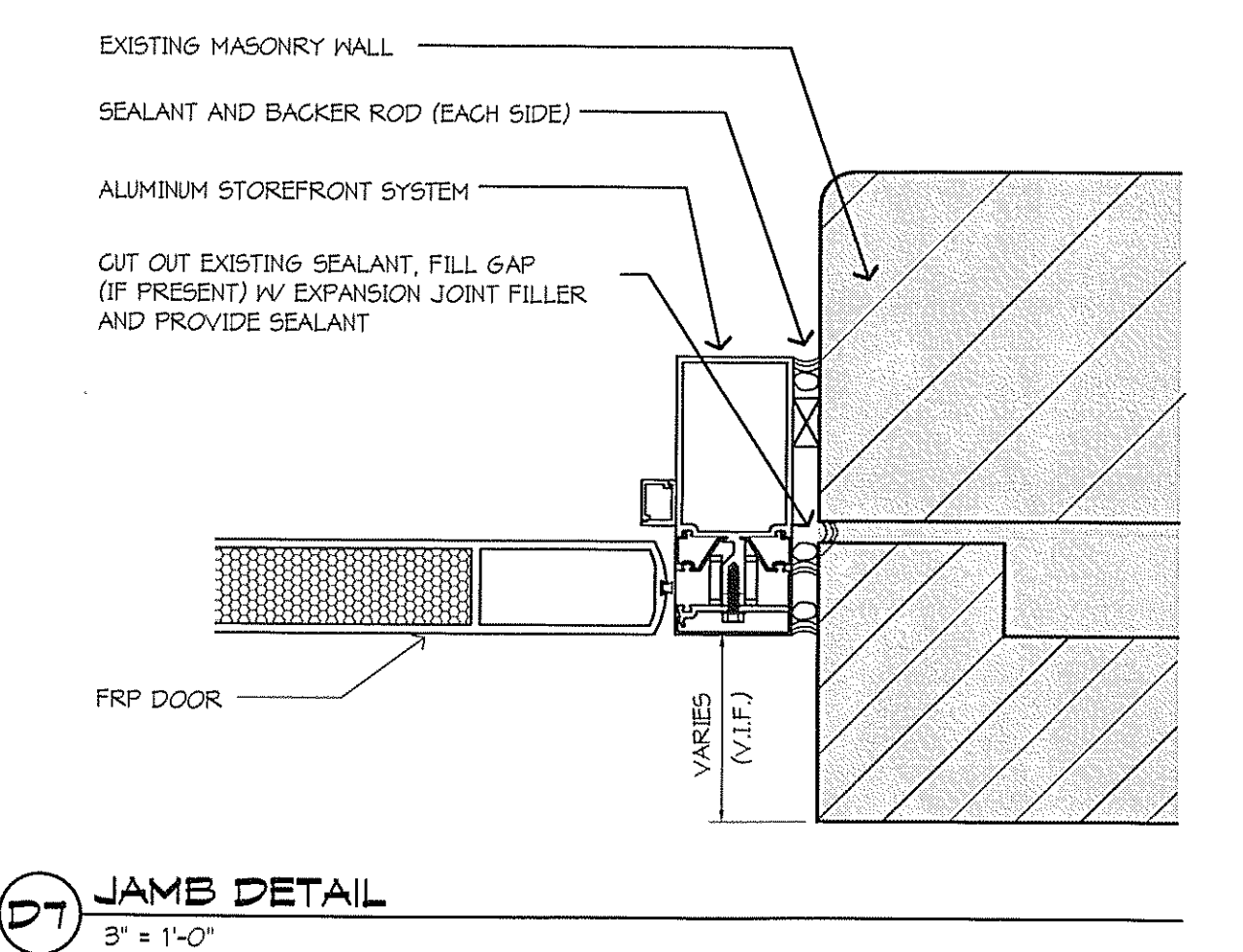
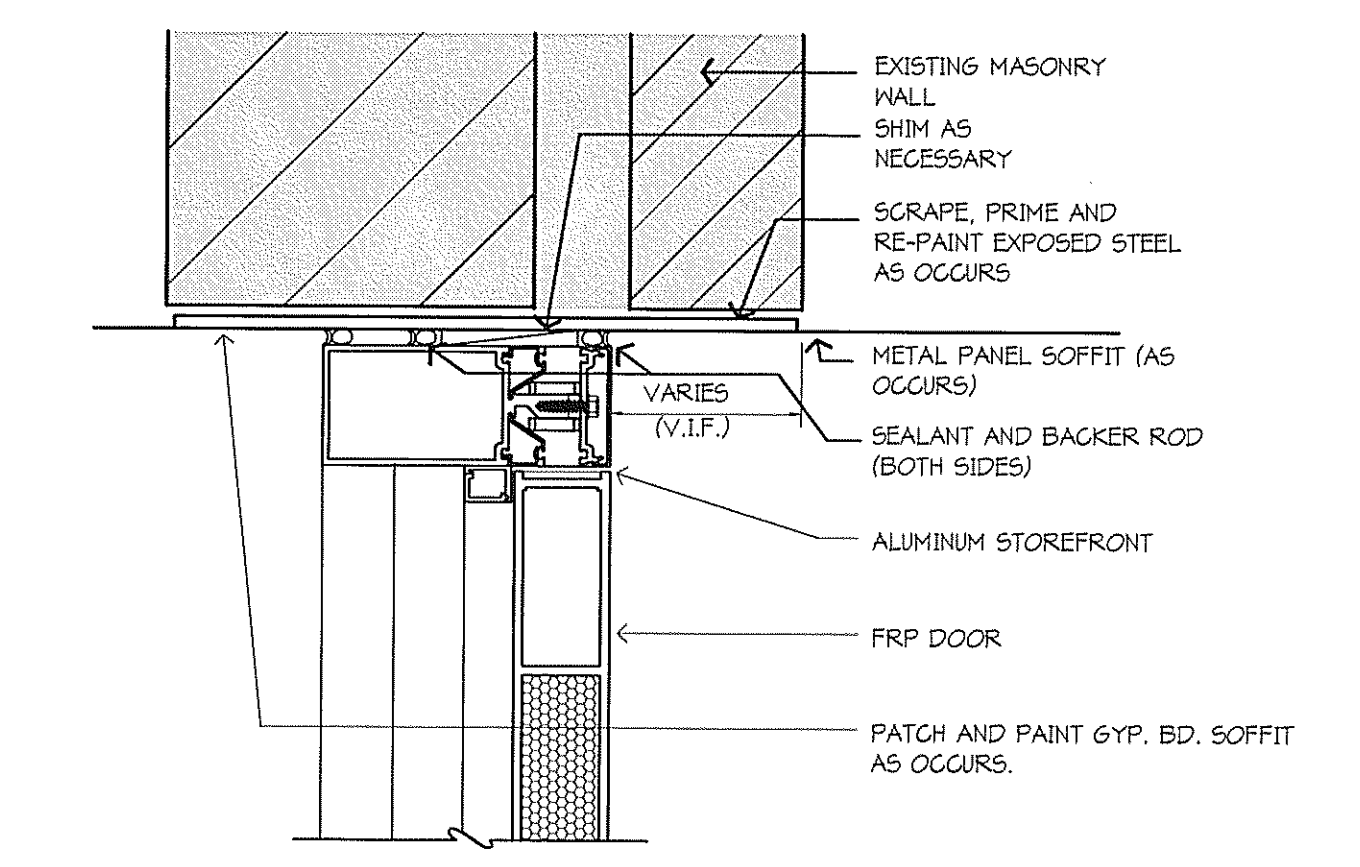
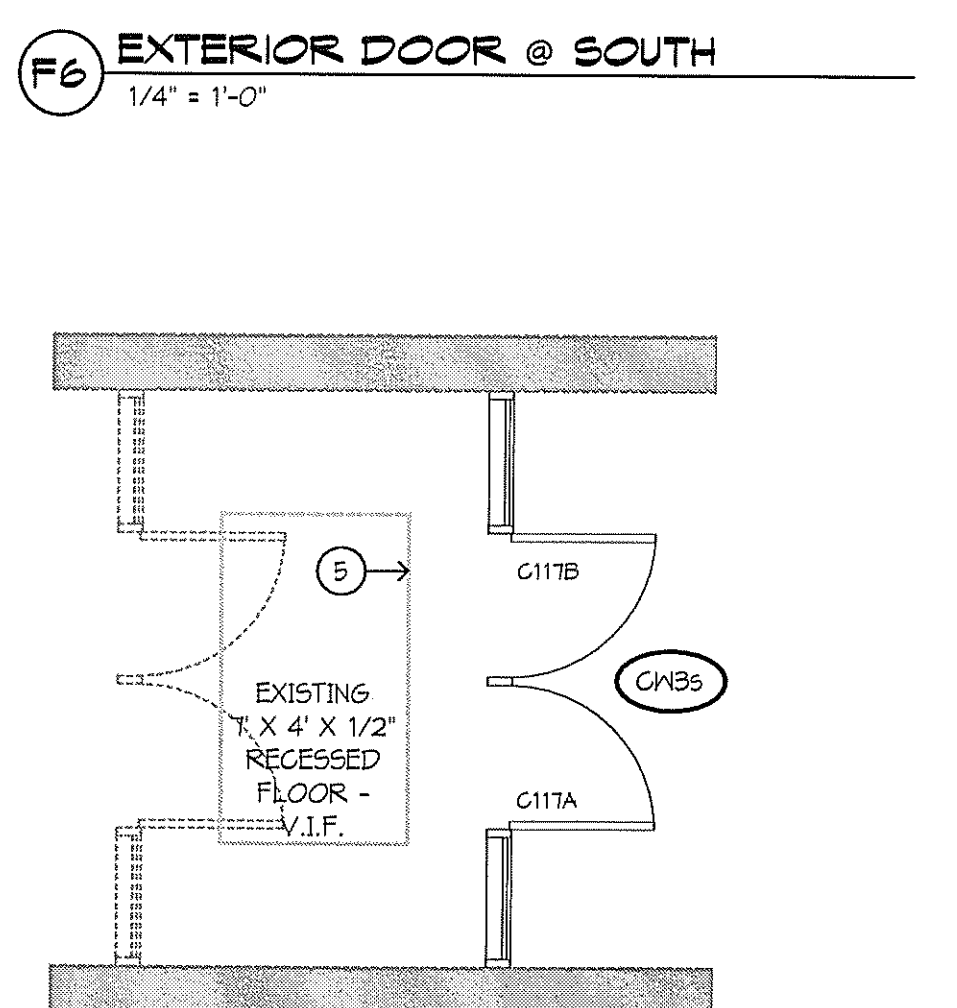
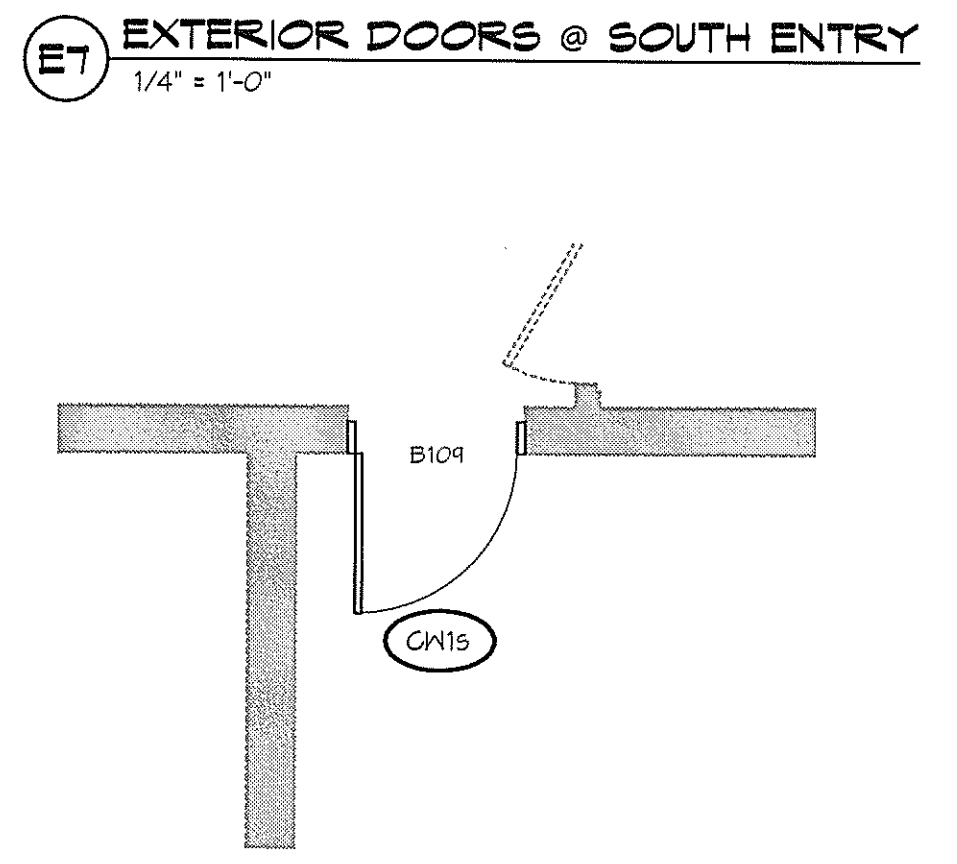
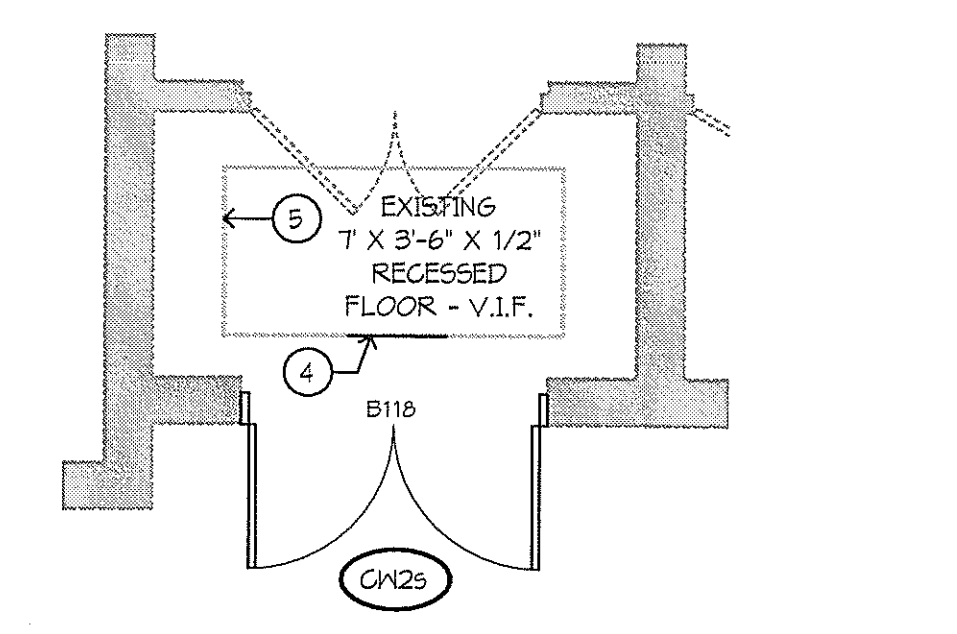
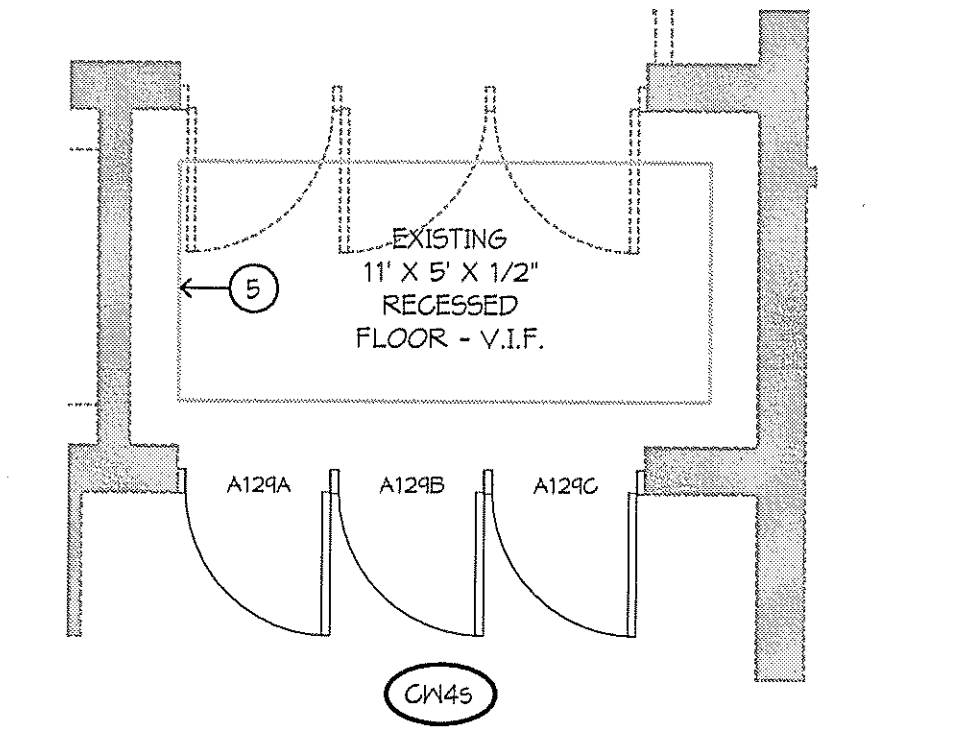
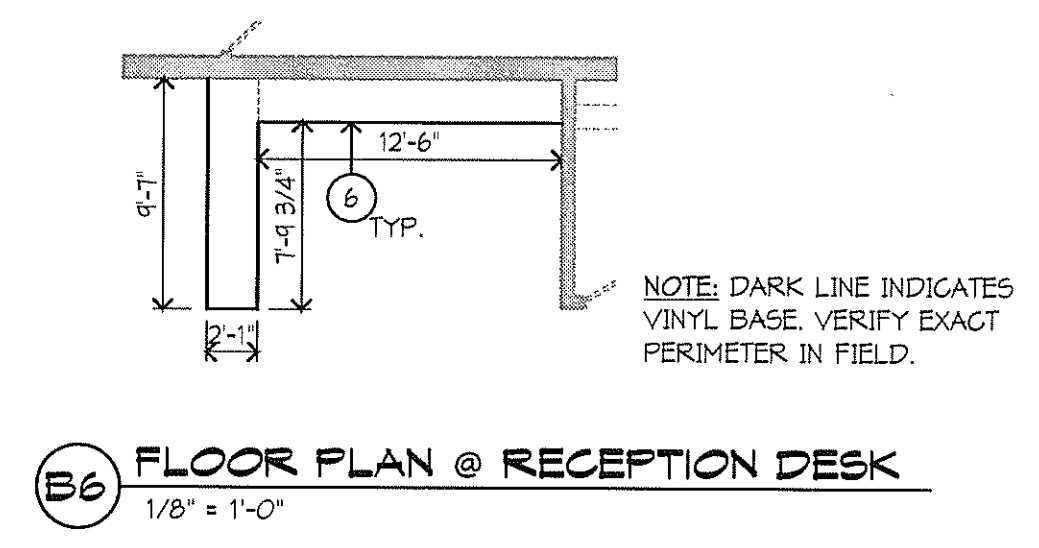
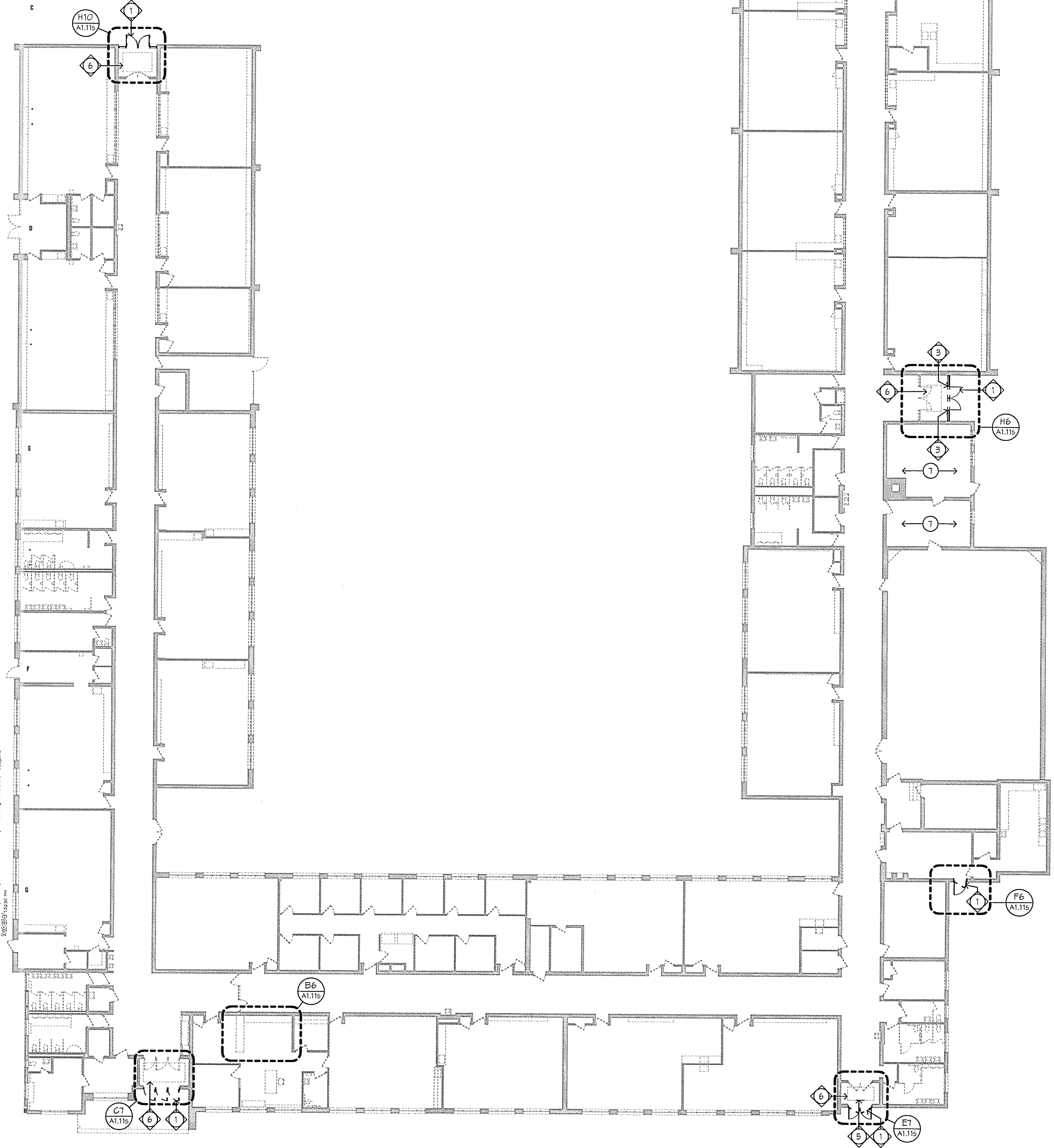
2. ALT. #1

- DOOR SCHEDULE GENERAL NOTES**
- ALL DOORS ARE 1 3/4" THICK UNLESS OTHERWISE NOTED.
  - FOR FRAME DEPTH, ONLY EXCEPTIONS TO THE FOLLOWING TABLE ARE SCHEDULED.  
GYPSUM BOARD PARTITIONS: THROAT OF FRAME TO MATCH WALL THICKNESS.
  - FRAME DEPTHS ARE SCHEDULED IN NOMINAL DIMENSIONS. SEE FRAME/DOOR TYPES (SHEET A116) FOR CORRESPONDING ACTUAL DIMENSIONS.
  - FOR GLASS TYPES, ONLY EXCEPTIONS TO THE FOLLOWING TABLE ARE SCHEDULED:  
INTERIOR NON-RATED.  
CLEAR (SAFETY WHEN REQUIRED BY TABLE IN GLAZING SPECIFICATION)  
INTERIOR AND EXTERIOR RATED.  
FIRE RATED.  
EXTERIOR NON-RATED.  
CLEAR INSULATED (SAFETY INSULATED WHEN REQUIRED BY TABLE IN GLAZING SPECIFICATION)
  - SEE SHEET A116 FOR DOOR AND FRAME TYPES.
  - AT DOOR SCHEDULE LABEL DESIGNATION "45/20" INDICATES:  
FOR ALL OPENINGS WITH SIDE LITE AND SCHEDULED TO BE RATED FOR 20 MINUTES, THE DOOR AND ANY GLASS WITHIN THE DOOR IS TO BE RATED FOR 20 MINUTES; THE FRAME AND ADJACENT SIDELITE(S) GLASS AND FRAME IS TO BE RATED FOR 45 MINUTES.



MI

MI



- FLOOR PLAN KEY NOTES:**
- TOOTH IN AREA OF MISSING BRICK WITH OWNER PROVIDED BRICK. MATCH EXISTING COURSEING. APPROXIMATELY TWO (2) BRICKS.
  - DOOR ACTIATORS
  - PATCH CONCRETE WITHIN EXISTING RECESSED WALK-OFF MAT AREA. APPROX 2X2 (2) SQ.FT.
  - PROVIDE APPROXIMATELY 2'-0" OF PERIMETER ANGLE AT RECESSED MAT AREA TO MATCH EXISTING.
  - PROVIDE NEW RECESSED FLOOR MAT PER DIMENSIONS NOTED. VERIFY IN FIELD.
  - PROVIDE VINYL BASE AT EXISTING DESK AND ADJACENT CASEWORK. SEE MATERIAL FINISH / COLORS SCHEDULE FOR SELECTION.
  - FIRE GULK APPROXIMATELY TWENTY (20) THROUGH WALL PENETRATIONS.

- FLOOR PLAN GENERAL NOTES:**
- REFER TO DETAILS OF CONSTRUCTION FOR:  
A. ABBREVIATIONS, MATERIAL SYMBOLS  
B. MOUNTING HEIGHTS  
C. LINTEL SCHEDULE  
D. MATERIAL FINISH/COLOR SCHEDULE  
E. WALL TYPES  
F. MARKER SD TYPES AND MOUNTING HTS  
THE ABOVE SECTIONS ARE LISTED FOR REFERENCE ONLY, AND ARE NOT EXCLUSIVE TO AREAS OF WORK. ALL DETAILS SHALL BE REVIEWED FOR SCOPE OF WORK.
  - ALL PLAN DIMENSIONS ARE NOMINAL TO FACE OF WALL. WALL THICKNESSES ARE SHOWN NOMINAL. SEE WALL TYPES FOR ACTUAL THICKNESSES.
  - ALL GYP. WALLS ARE TO BE 5 INCHES THICK UNLESS OTHERWISE NOTED.
  - COORDINATE SIZE AND LOCATION OF ALL DUCT AND SHAFT OPENINGS IN WALLS AND FLOORS W/ HEIGHT, AND ELEC. PROVIDE ALL REQUIRED LINTELS FOR OPENINGS. SEE LINTEL SCHEDULE.
  - FIELD VERIFY ALL MILLWORK OPENINGS.
  - ALL DOOR/SIDELITE OPENINGS TO BEGIN 4" FROM ADJACENT WALL UNLESS OTHERWISE NOTED.
  - FIRE RATED WALLS ARE INDICATED ON CODE PLANS.
  - HEAVY LINE THUS  
INDICATES BUILDING MATCH LINE

- DEMOLITION PLAN KEY NOTES:**
- REMOVE EXISTING FRAME, DOOR AND ASSOCIATED HARDWARE (REMOVE GLAZING AT EXTERIOR DOORS AS OCCURS).
  - SEE ELEC. FOR DEMOLITION/RELOCATION OF EXISTING ELECTRICAL EQUIPMENT.
  - SAW CUT AND REMOVE EXISTING COVERED BASE AS NECESSARY TO INSTALL NEW FRAME.
  - REMOVE BROKEN BRICKS AS NECESSARY FOR THE INSTALLATION OF NEW MASONRY.
  - REMOVE APPROXIMATELY 2'-0" OF DAMAGED RECESSED MAT TRACK. VERIFY EXACT LOCATION IN FIELD.
  - GRIND OUT ALL DEBRIS INSIDE PERIMETER OF EXISTING RECESSED MAT TRACK TO PROVIDE UNIFORM DEPTH. SEE NEW WORK FOR APPROXIMATE FLOOR TRACK SIZE.
- DEMOLITION LEGEND**
- WALL TO REMAIN
  - WALL TO BE REMOVED
  - DOOR TO REMAIN
  - DOOR, FRAME, AND HARDWARE TO BE REMOVED UNLESS NOTED OTHERWISE
  - DESIGNATED ITEM TO REMAIN
  - DESIGNATED ITEM TO BE REMOVED

**MATERIAL FINISH/ COLOR SCHEDULE**

Item	Manufacturer	Color/Finish
06 10 00 FRP Flush Doors FRP Doors	Speed-Lite	Color: Speed-Lite FRP Scanrol
06 40 00 Aluminum Entrances, Storefronts, and Curtain Walls Prefinished Doors, Curtain Walls And Accessories	ERCO	Color: Clear anodized
Anodized Doors, Curtain Walls And Accessories	ERCO	Color: To match sample supplied by Architect
06 71 00 Finish Hardware Ball Hanger Detentors	As specified	US220 on stainless steel
Ball Hanger Detentors	As specified	US220 on steel
Flush Bulbs	As specified	US220 on brass or bronze
Exit Devices	As specified	US220 on brass or bronze
Locks	As specified	US220 on brass or bronze
Push And Pull Plates/ Bars	As specified	US220 on stainless steel
Coordination	As specified	USP on steel
Clevers	As specified	Stainless steel on cast iron or aluminum
Protective Plates	As specified	US220 on stainless steel
Overhead Stops	As specified	US220 on brass, bronze, or steel
Wall Stops	As specified	US220 on brass, bronze, or steel
Magnetic Holders	As specified	Sanded SA on cycloac
Thresholds	As specified	M6 aluminum
Weatherstrips And Sweep Strips	As specified	Clear anodized aluminum
Miscellaneous	As specified	US220 on brass or bronze
09 65 00 Resilient Flooring Vinyl Base	Johannes	Color: As selected by Architect from Full color list

**2012 STUCKEY ELEMENTARY SCHOOL IMPROVEMENTS**

19900 BEECH DALY ROAD  
REDFORD, MI 48240

REDFORD UNION SCHOOL DISTRICT  
18499 BEECH DALY ROAD  
REDFORD, MI 48240

REC FINISH BY  
WOLD ARCHITECTS ENGINEERS

202 East Third Street  
Suite Two Hundred  
Royal Oak, MI 48067

tel 248 284 0511  
fax 248 284 0515  
mail@wolda.com

I hereby certify that this plan, specification or report was prepared by me or under my direct supervision and that I am a duly licensed ARCHITECT

under the laws of the State of MICHIGAN

Description	Revisions	Date	Num.

Comm: 0/4/22  
Date: 4/18/2012  
Drawn: LHP  
Check: MKC

**STUCKEY ELEMENTARY SCHOOL IMPROVEMENTS**

Scale: As indicated

**A1.11s**