

DOOR NO	TYPE	DOOR / OPENING			DOOR / OPENING SCHEDULE			MOUNTING CONDITIONS			HOW GRP	REMARKS	
		QTY	WIDTH	HEIGHT	FRAME	GL	GL	HEAD	JAMB	SILL			
11A	F	1	3'-0"	6'-8"	NO	20/49	EXIST.	---	---	---	---	1	3
30A	FG	1	3'-0"	6'-8"	FRP	---	---	ALUM.	B3/A1.12m	G3/A1.12m	---	2	1
30B	FG	1	3'-0"	6'-8"	FRP	---	---	---	B3/A1.12m	G3/A1.12m	---	1	1
35A	FG	1	3'-0"	7'-0"	FRP	---	---	---	B3/A1.12m	G3/A1.12m	---	2	1
35B	FG	1	3'-0"	7'-0"	FRP	---	---	---	B3/A1.12m	G3/A1.12m	---	3	1
35C	FG	1	3'-0"	7'-0"	FRP	---	---	---	B3/A1.12m	G3/A1.12m	---	2	1
35A	FG	1	3'-0"	6'-8"	FRP	---	---	---	B3/A1.12m	G3/A1.12m	---	2	1
35B	FG	1	3'-0"	6'-8"	FRP	---	---	---	B3/A1.12m	G3/A1.12m	---	4	1

DOOR SCHEDULE GENERAL NOTES

- ALL DOORS ARE 1 3/4" THICK UNLESS OTHERWISE NOTED.
- FOR FRAME DEPTH, ONLY EXCEPTIONS TO THE FOLLOWING TABLE ARE SCHEDULED.
6" SYSTEM BOARD PARTITIONS: THROAT OF FRAME TO MATCH WALL THICKNESS.
MASONRY PARTITIONS:
4" HALL: 3 3/4" FRAME
6" HALL: 3 3/4" FRAME
8" AND GREATER HALL: 3 3/4" FRAME
FRAME DEPTHS ARE SCHEDULED IN NOMINAL DIMENSIONS. SEE FRAME / DOOR TYPES (DETAIL SECTION 52000) FOR CORRESPONDING ACTUAL DIMENSIONS.
- FOR GLASS TYPES, ONLY EXCEPTIONS TO THE FOLLOWING TABLE ARE SCHEDULED:
INTERIOR NON-RATED:
CLEAR (SAFETY WHEN REQUIRED BY TABLE IN GLAZING SPECIFICATION.)
INTERIOR AND EXTERIOR RATED:
FIRE RATED
EXTERIOR NON-RATED:
CLEAR INSULATED (SAFETY INSULATED WHEN REQUIRED BY TABLE IN GLAZING SPECIFICATION.)
- SEE DRAWING A1.11 FOR FRAME TYPES.
- SEE DRAWING A1.11 FOR DOOR TYPES.
- AT DOOR SCHEDULE, LABEL DESIGNATION "45/20" INDICATES:
FOR ALL OPENINGS WITH SIDE LITES AND SCHEDULED TO BE RATED FOR 20 MINUTES, THE DOOR AND ANY GLASS WITHIN THE DOOR IS TO BE RATED FOR 20 MINUTES; THE FRAME AND ADJACENT SIDELITES GLASS AND FRAME IS TO BE RATED FOR 45 MINUTES.

DOOR SCHEDULE REMARKS

- SCHEDULED DOOR SIZE IS APPROXIMATE. CONTRACTOR TO FIELD VERIFY EXISTING ROUGH OPENINGS AND PROVIDE DOOR AND FRAMES TO MATCH ROUGH OPENINGS.
- PAINT H.M. FRAME TO MATCH EXISTING PAINTED DOOR FRAMES. ARCHITECT TO APPROVE FINAL COLOR MATCH.
- EXISTING HOLLOW METAL FRAME TO REMAIN.

B3 EXTERIOR DOORS @ MAIN ENTRY
1/4" = 1'-0"

B4 EXTERIOR DOOR @ EAST ENTRY
1/4" = 1'-0"

A6 INTERIOR DOOR @ MEDIA CENTER
1/4" = 1'-0"

B6 EXTERIOR DOOR @ SOUTH ENTRY
1/4" = 1'-0"

FRAME ELEVATIONS
1/4" = 1'-0"

DOOR TYPES
1/4" = 1'-0"

CURTAINWALL TYPES
1/4" = 1'-0"

C6 PLAN @ DISPLAY CASE
1/8" = 1'-0"

D6 ELEVATION @ DISPLAY CASE
1/4" = 1'-0"

D6 ELEVATION @ DISPLAY CASE
1/4" = 1'-0"

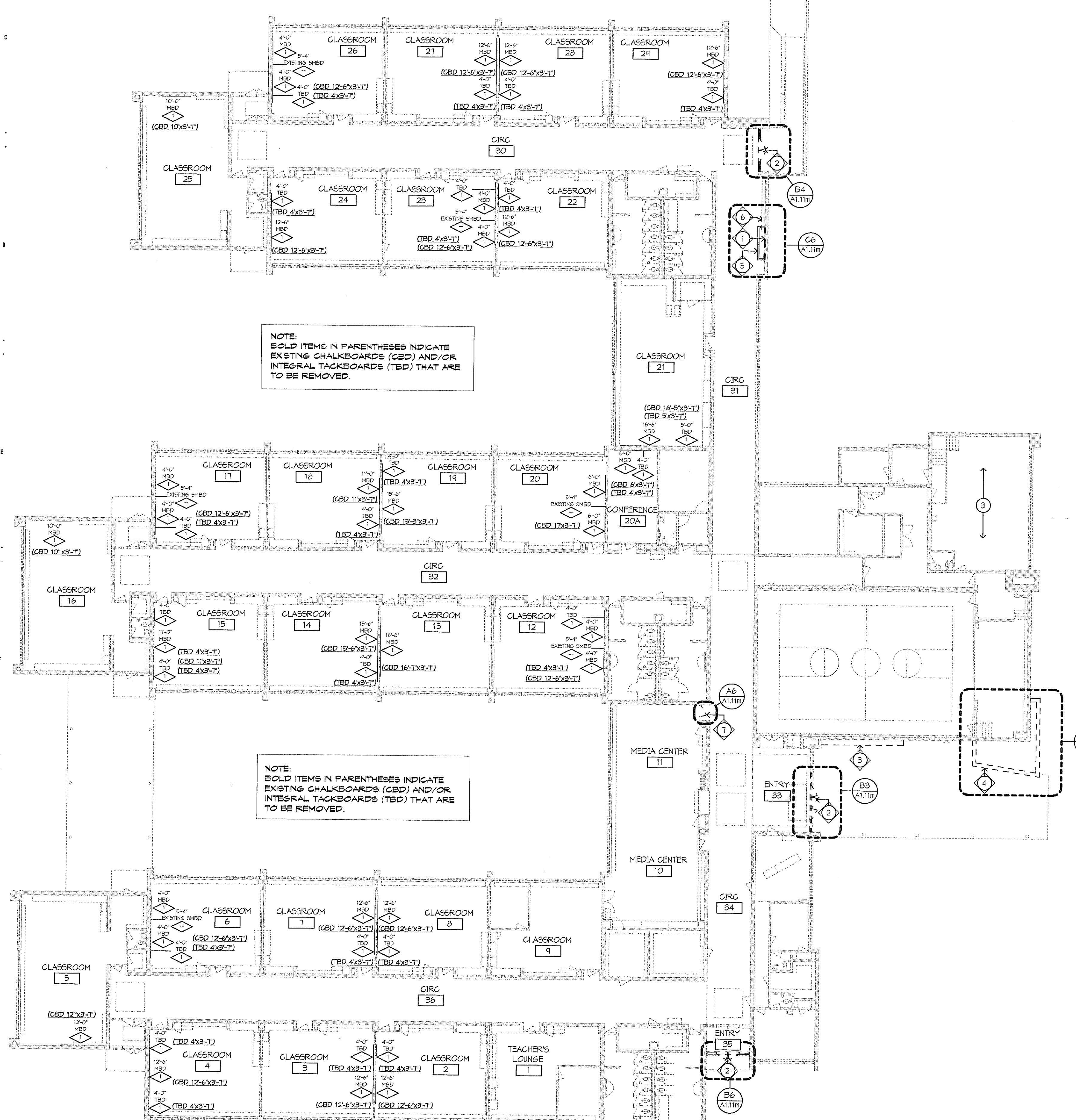
E6 PLAN @ PLANTER
1/8" = 1'-0"

E6 Elevation 3 - a
1/4" = 1'-0"

H7 Elevation 1 - a
1/4" = 1'-0"

H6 Elevation 2 - a
1/4" = 1'-0"

H8 Elevation 4 - a
1/4" = 1'-0"



H1 MAIN LEVEL FLOOR PLAN
1/16" = 1'-0"

FLOOR PLAN KEY NOTES:

- DOOR ACTUATORS
- PROVIDE PORCELAIN TILE AT NEW DISPLAY CASE SHROUD.
- FIRE CAULK APPROXIMATELY 20 (TWENTY) THROUGH WALL PENETRATIONS.

FLOOR PLAN GENERAL NOTES:

- REFER TO DETAILS OF CONSTRUCTION FOR:
A. ABBREVIATIONS, MATERIAL SYMBOLS
B. MARKER BD TYPES AND MOUNTING HEIGHTS
THE ABOVE SECTIONS ARE LISTED FOR REFERENCE ONLY, AND ARE NOT EXCLUSIVE TO AREAS OF WORK. ALL DETAILS SHALL BE REVIEWED FOR SCOPE OF WORK.
- CONTRACTOR IS TO PROTECT ALL ADJACENT SURFACES DURING REMOVAL AND INSTALLATION OF VISUAL DISPLAY BOARDS. ANY DAMAGE TO FLOOR, WALL AND CEILING FINISHES IS TO BE REPLACED/REPAIRED AT THE COST OF THE CONTRACTOR.
- LEGALLY DISPOSE OF ALL MATERIALS OFF-SITE.

DEMOLITION PLAN KEY NOTES:

- REMOVE VGT AND VINYL HALL BASE WHERE NEW HALL BELOW DISPLAY CASE IS TO BE INSTALLED. CUT VINYL BASE AS NECESSARY.
- REMOVE EXISTING DOOR, FRAME, GLAZING AND ALL ASSOCIATED HARDWARE. TURN HARDWARE OVER TO THE OWNER.
- REMOVE EXISTING CONCRETE BENCH.
- REMOVE EXISTING BRICK/MASONRY RETAINING WALLS AT PLANTER.
- REMOVE EXISTING GLASS FROM FRAMED DISPLAY CASE.
- CUT TOP OF EXISTING WOOD BENCH BACK TO FIRST SUPPORT (APPROX. 40"). REMOVE AND RE-INSTALL END WOOD TRIM AT NEW 'END'.
- REMOVE EXISTING DOOR AND ALL ASSOCIATED HARDWARE. EXISTING HOLLOW METAL FRAME TO REMAIN. TURN HARDWARE OVER TO THE OWNER.

DEMOLITION PLAN GENERAL NOTES:

- REMOVE EXISTING CHALKBOARD (CB) / MARKERBOARD (MB) / TACKBOARD (TB) AND ALL ASSOCIATED ADHESIVES AND MOUNTING HARDWARE. REMOVAL OF EXISTING BOARDS ARE SHOWN ON THE MAIN LEVEL FLOOR PLAN AS THUS: (CB 12x4). SIZES ARE APPROXIMATE.
- AT ALL LOCATIONS OF EXISTING SMARTBOARDS MOUNTED OVER EXISTING CHALKBOARDS TO BE REMOVED, CAREFULLY UNINSTALL SMARTBOARD, STORE AND REINSTALL ON HALL AT ORIGINAL LOCATION. RECALIBRATION OF SMARTBOARD TO BE PROVIDED BY OTHERS.

DEMOLITION LEGEND

- HALL TO REMAIN
- HALL TO BE REMOVED
- DOOR TO REMAIN
- DOOR, FRAME AND HARDWARE TO BE REMOVED UNLESS NOTED OTHERWISE
- DESIGNATED ITEM TO REMAIN
- DESIGNATED ITEM TO BE REMOVED

2012 MACGOWAN ELEMENTARY IMPROVEMENTS

18255 KINLOCH ST.
REDFORD, MI 48240
REDFORD UNION SCHOOL DISTRICT
18499 BEECH DALY ROAD
REDFORD UNION, MI 48240

PREPARED BY
WOLD
architects engineers
www.woldae.com

202 East Third Street
Suite Two Hundred
Royal Oak, MI 48067
tel: 248 284 0611
fax: 248 284 0615
mail@woldae.com

I hereby certify that this plan, specification or report was prepared by me or under my direct supervision and that I am a duly licensed ARCHITECT under the laws of the State of MICHIGAN

Registration Number	DANIAL KRITTA 1301047542	Date	10/31/2012
Revisions			
Description	Date	Num	

Comm: 094034
Date: 4/18/2012
Drawn: LHP
Check: HJK

MACGOWAN ELEMENTARY SCHOOL - OVERALL PLAN, ELEVATIONS

Scale: As indicated

A1.11m