

GROSSE POINTE PUBLIC SCHOOL SYSTEM

Grosse Pointe South High School

Greenhouse Stabilization

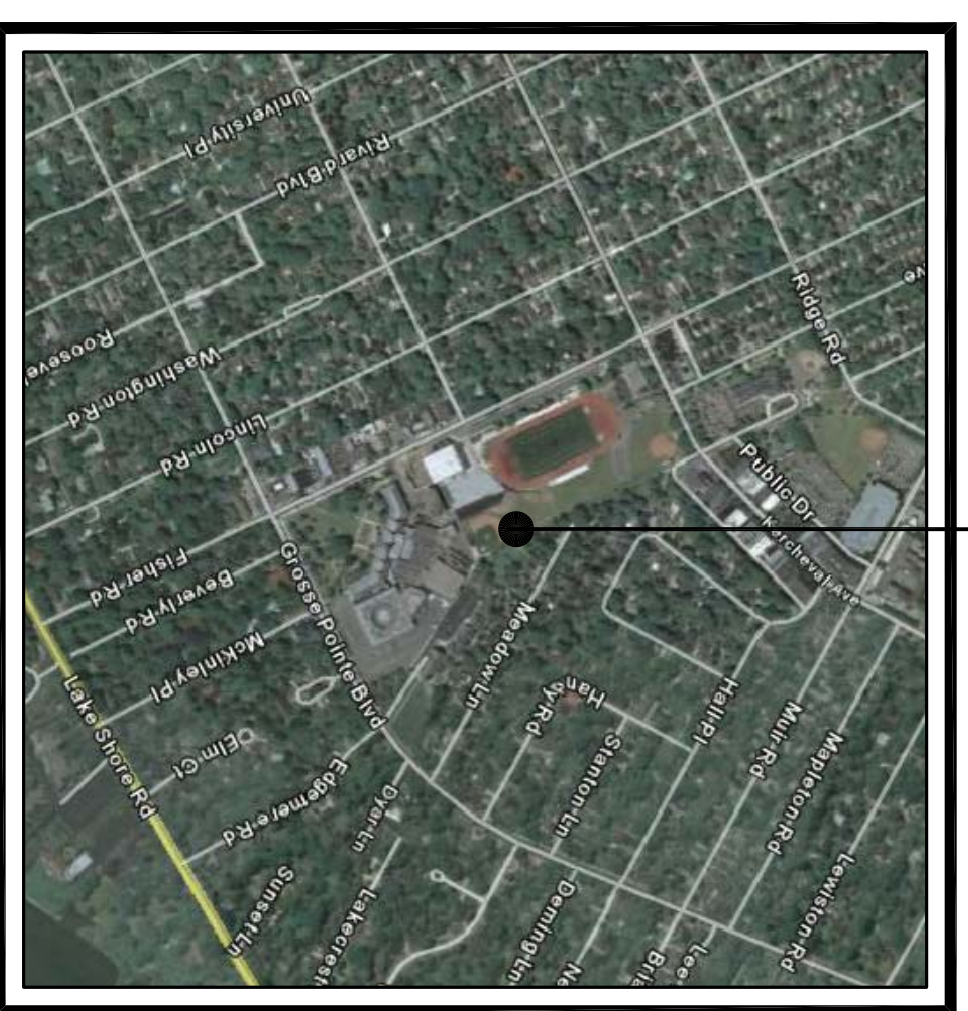
Grosse Pointe South High School
11 Grosse Pointe Blvd.
Grosse Pointe Farms, MI 48230
313.432.3509
Contact: Mr. Michael Torongo, Building Engineer

Grosse Pointe Public School System
389 St. Clair Avenue
Grosse Pointe, MI 48230
313.432.3082
Contact: Mr. Richard VanGorder
Manager of Buildings and Grounds

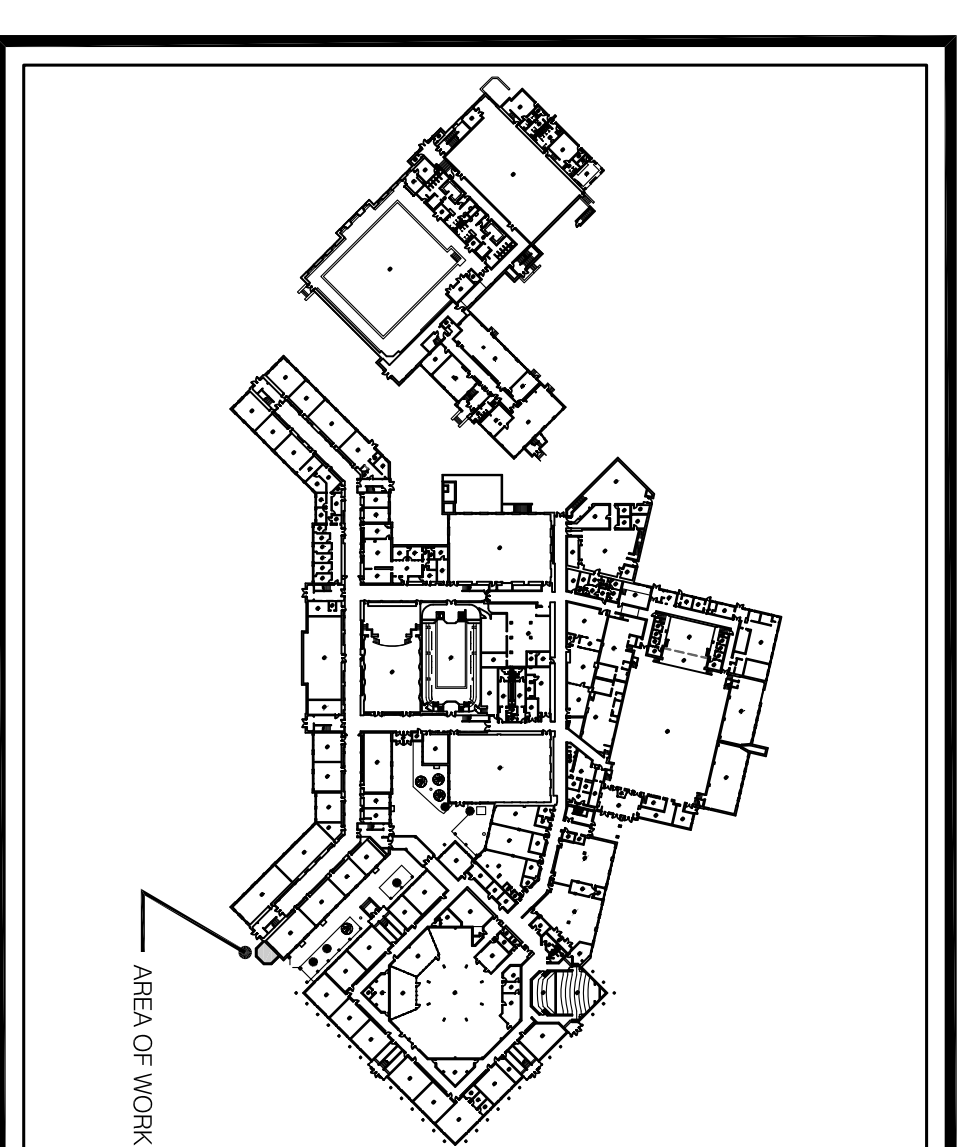
ARCHITECT:

Ehresman Associates, Inc.
architects • engineers

803 West Big Beaver Road, Suite 350
Troy, Michigan 48064-4734
248.244.9710
248.244.9712 (f)
email: architects@ehresmanassociates.com



LOCATION PLAN
NOT TO SCALE



CAMPUS PLAN
NOT TO SCALE

APPLICABLE CODES:
MICHIGAN REHABILITATION CODE FOR EXISTING BUILDINGS 2009 EDITION
FEDERAL ADA LAW CURRENT EDITION
MICHIGAN BARRIER FREE DESIGN ACT

OCCUPANCY GROUP:
E: EDUCATIONAL

ZONING DISTRICT:
CS: COMMUNITY SERVICE (EXISTING)

CONSTRUCTION TYPE:
TYPE III B

LIST OF ALTERNATES:

ALTERNATE #1:
ADD TO OR DEDUCT FROM THE BASE PROPOSAL AMOUNT TO CHANGE FROM CURVED EDGE ADD TO OR DEDUCT FROM THE BASE PROPOSAL AMOUNT TO CHANGE FROM CURVED EDGE FURTHER INFORMATION ON THIS ALTERNATE

ALTERNATE #2:
ADD TO THE BASE PROPOSAL AMOUNT TO PROVIDE VERTICAL TRIPLE MUNTINS IN lieu OF BETWEEN THE GLASS AS SHOWN. REFER TO ALL DRAWINGS AND SPECIFICATIONS FOR FURTHER INFORMATION ON THIS ALTERNATE.

PROJECT NO.: 5309

LIST OF DRAWINGS:

ARCHITECTURAL

TTL TITLE SHEET

A00 GENERAL INFORMATION

A01 ELEVATION REMOVALS

A20 PARTIAL ENLARGED PLANS

A30 EXTERIOR ELEVATIONS

A35 BUILDING SECTION

A80 DETAILS

Bidding: 22 March 12

Title Sheet

Scale: No Scale

Ehresman Associates, Inc.
architects • engineers

Grosse Pointe Public School System
Grosse Pointe South High School
Greenhouse Stabilization

Project No. 5309

TTL

803 West Big Beaver Road, Suite 350, Troy, Michigan 48064 • 248.244.9710 • (f) 248.244.9712
email: architects@ehresmanassociates.com
© Ehresman Associates, Inc. 2012