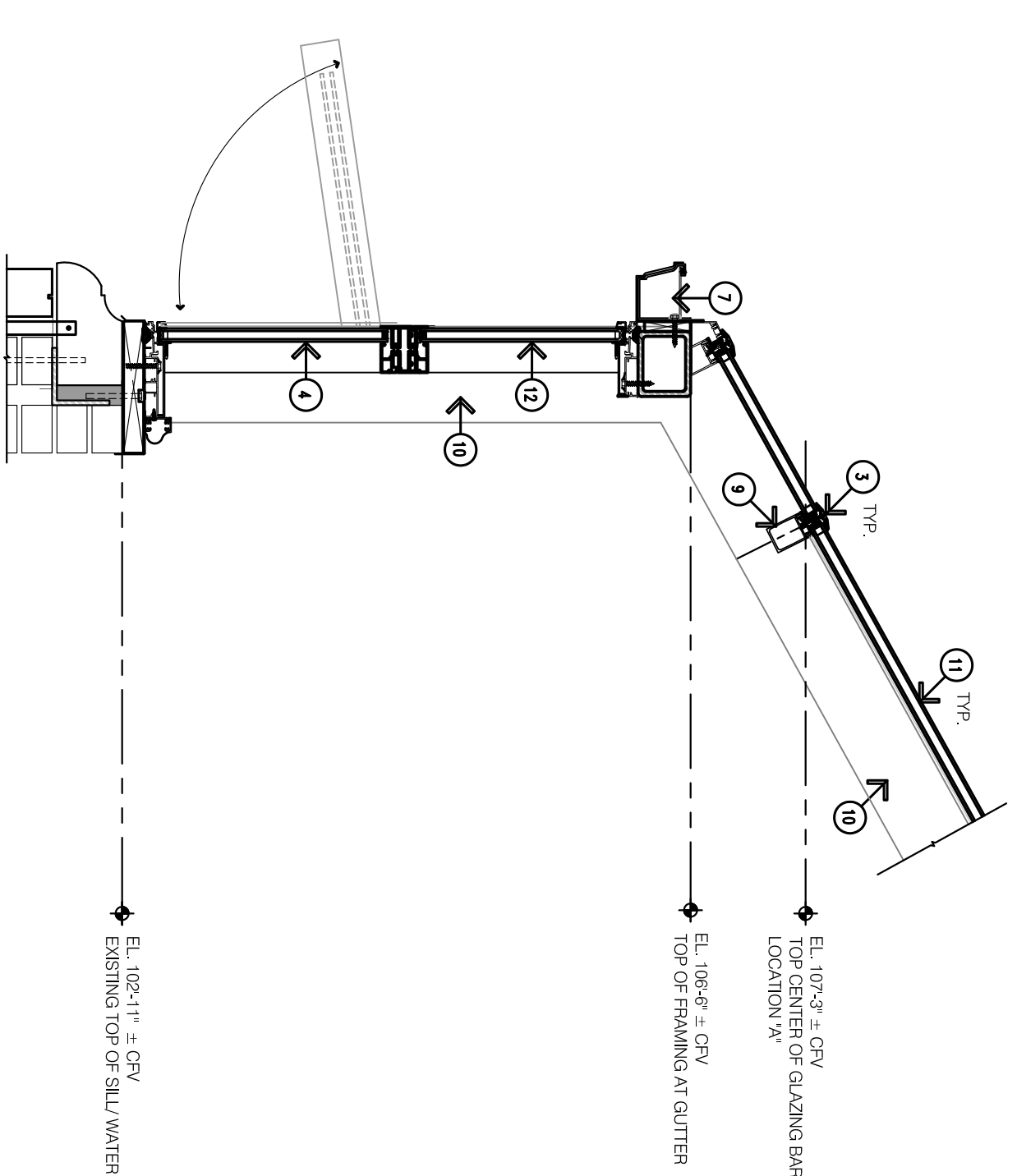


**EXISTING ITEMS TO REMAIN:**

- E1. BRICK VENEER
- E2. CONCRETE SIDEWALK
- E3. PAINTED CONCRETE FLOOR SLAB



- WORK NOTES:**
1. ALUMINUM SUB FRAME FOR GUTTER SUPPORT
  2. REMOVE EXISTING Limestone BASE PANEL, PLUMB AND LEVEL, MODIFY AS NEEDED TO ATTACH TO BACK-UP MASONRY AS DETAILED IN DRAWING A80.
  3. BRIGLED CAP COVER
  4. AWNING WINDOW
  5. CURVED EAVE GLASS (BASE BID) - NOT SHOWN
  6. OPERABLE VENTILATING SKYLIGHT WITH SCREEN REFER TO SPECIFICATIONS.
  7. PREFINISHED METAL GUTTER - SLOPE TO DOWNSPOUTS.
  8. VENTING WINDOW SUPPORT FRAME AND ROOF AS REQUIRED BY GREENHOUSE MANUFACTURER - SIZE BY MANUFACTURER.
  9. GLAZING BAR - SIZE BY MANUFACTURER (SEE SHOWN'S APPROXIMATE).
  10. PURLIN - SEE BY MANUFACTURER (SEE SHOWN'S APPROXIMATE).
  11. GREENHOUSE SYSTEM GLAZING
  12. TRANSOM WINDOW

2 Partial Section of Straight Eave (Alternative #1)  
Scale: 1"=1'-0"

OTHER HALF SYMMETRICAL

EL. 111'-9" ± G.F.V. EXISTING BOTTOM OF RIDGE SUPPORT FOR GENERAL REFERENCE

EL. 110'-5 1/2" ± G.F.V. TOP CENTER OF GLAZING BAR LOCATION "C"

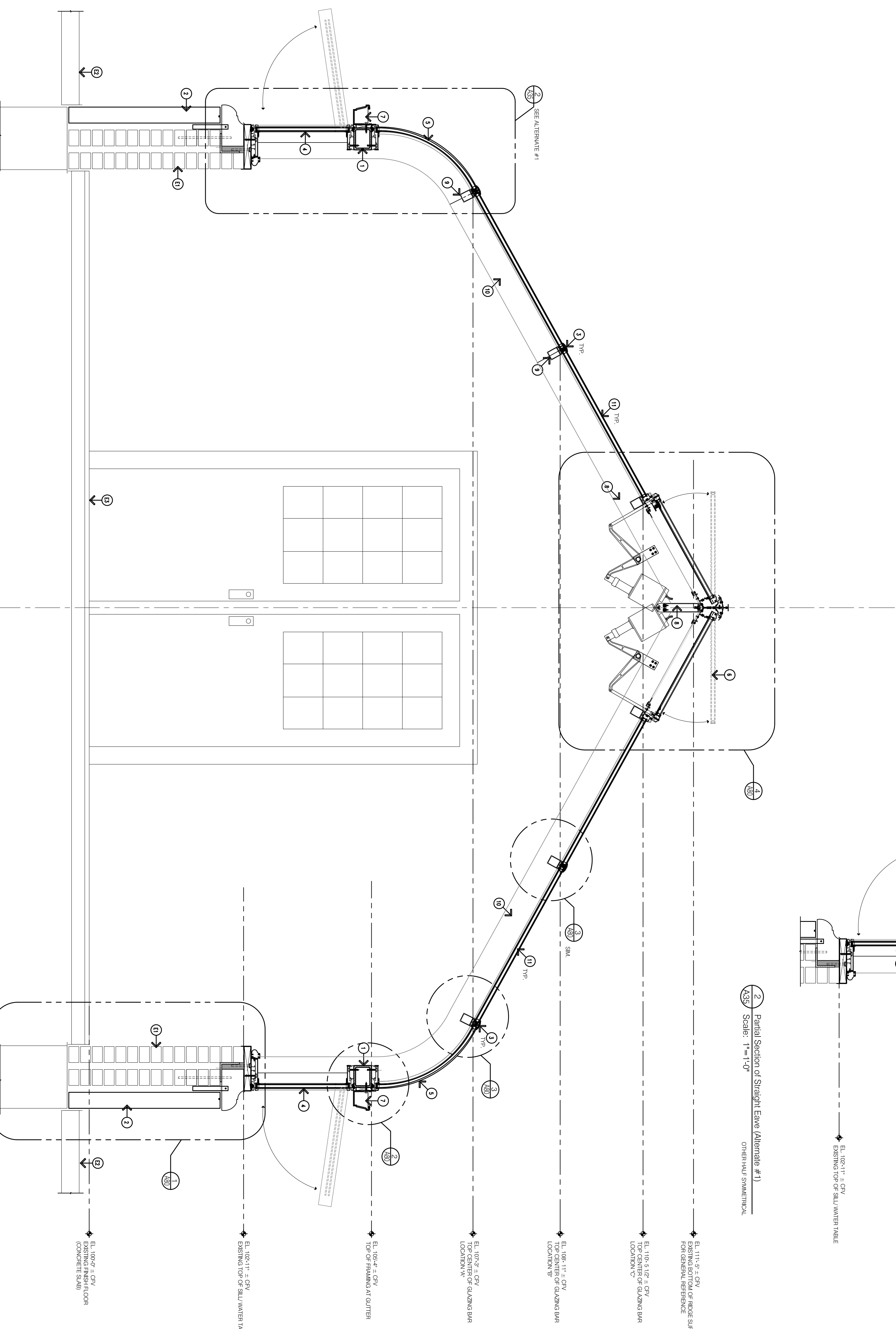
EL. 108'-11" ± G.F.V. TOP CENTER OF GLAZING BAR LOCATION "B"

EL. 108'-2" ± G.F.V. TOP CENTER OF GLAZING BAR LOCATION "A"

EL. 106'-4" ± G.F.V. TOP OF FRAMING AT GUTTER

EL. 105'-11" ± G.F.V. EXISTING TOP OF SILL/WATER TABLE

EL. 109'-0" ± G.F.V. EXISTING FINISH FLOOR (CONCRETE SLAB)



1 Partial Enlarged Roof Plan  
Scale: 1"=1'-0"

Bidding: 22 March 12  
Scale: 1"=1'-0"

**Building Section**  
**Ervesman Associates, Inc.**  
ARCHITECTS • ENGINEERS

Grosse Pointe Public School System  
Grosse Pointe South High School  
Greenhouse Stabilization

Project No. 5309

A35