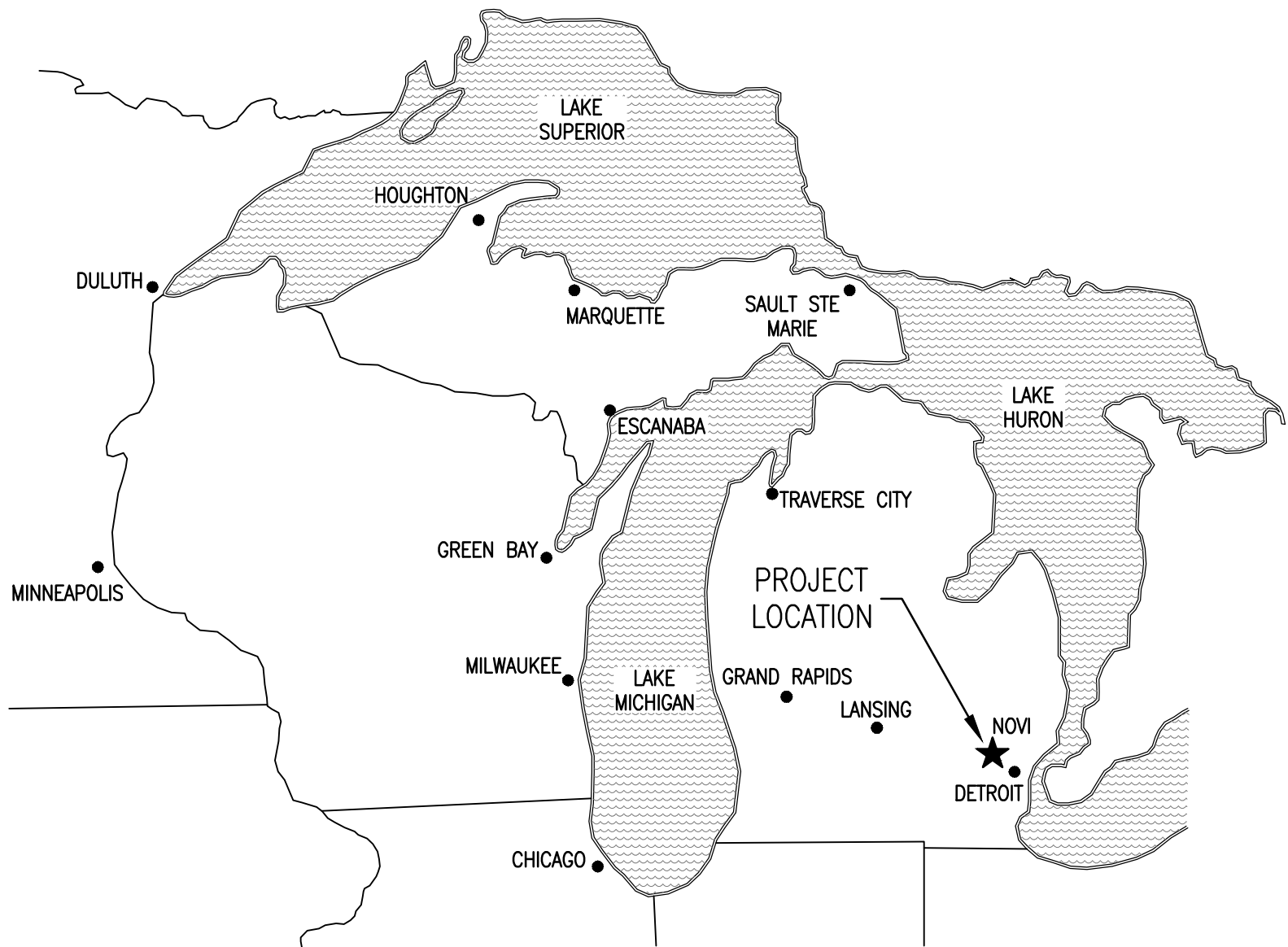
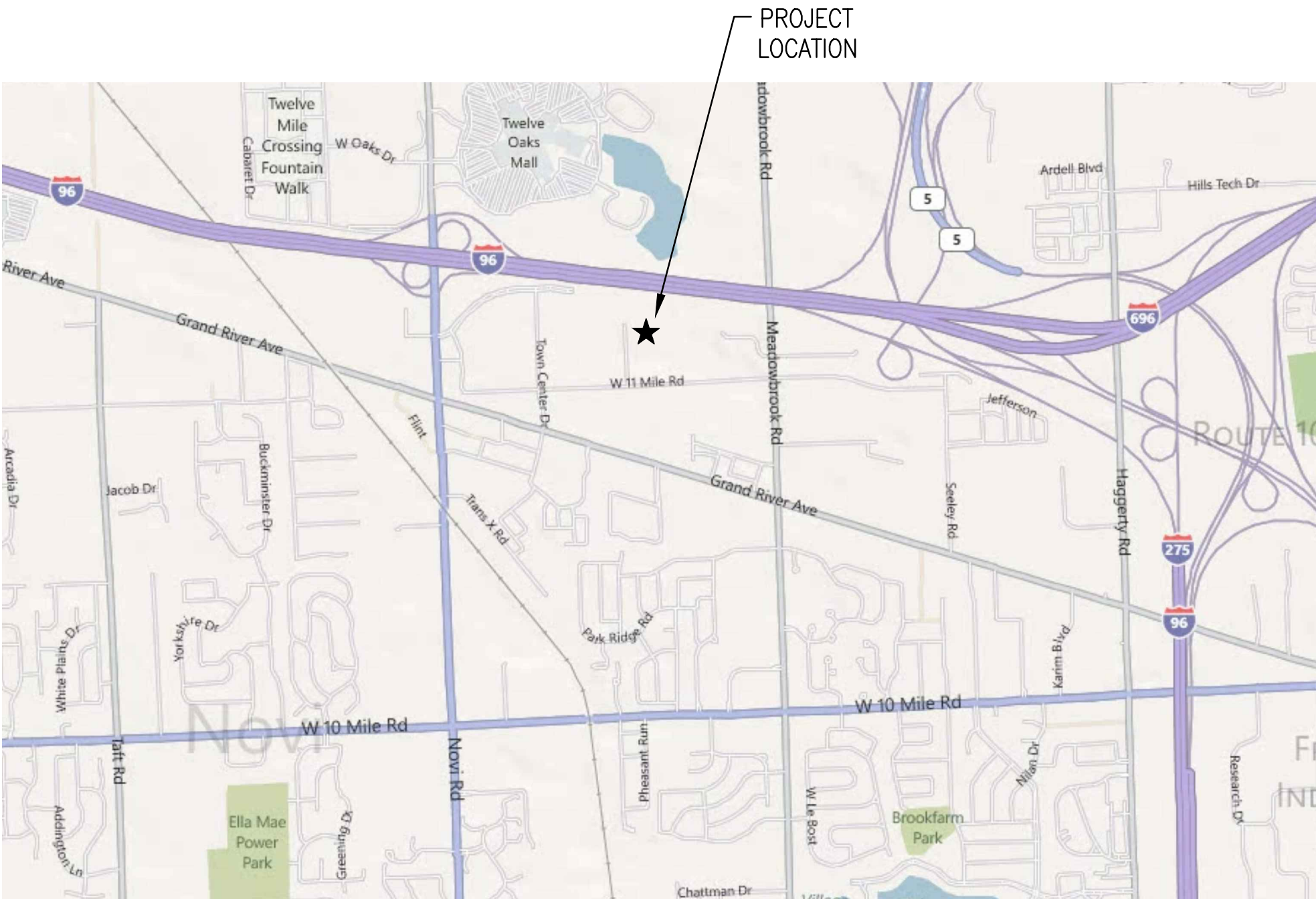


DRAWING PATH: P:\000_7\00_Livonia\0163120021_novi field services complex_HANCOCK\Drawings\new livonia facilities project\Sheets\0163120021-DT.dwg Mar 06, 2012 - 12:00pm



AREA LOCATION MAP



PROJECT LOCATION MAP

CITY OF NOVI

Field Services Complex - Door & Window Replacement

26300 Lee BeGole Drive, Novi, MI 48375

OWNER:

CITY OF NOVI
26300 LEE BeGOLE DRIVE
NOVI, MI, 48375
PH 248.735.5606
PROJECT CONTACT - ROB HAYES
DIRECTOR OF PUBLIC SERVICES, CITY ENGINEER

ARCHITECT/ENGINEER:

Orchard, Hiltz & McCliment
34000 Plymouth Rd.
Livonia, MI 48150

734.522.8711
PROJECT CONTACT - Wayde Hoppe



34000 Plymouth Rd.
Livonia, MI 48150

734.522.8711
734.522.6427 FAX

GENERAL NOTES:

1. GENERAL NOTES APPLY TO ALL DRAWINGS
2. DO NOT SCALE DRAWINGS. ANY DIMENSIONAL INFORMATION REQUIRED WHICH IS NOT INDICATED ON DRAWING DIMENSION STRINGS SHALL BE OBTAINED FROM THE ARCHITECT.
3. DIMENSIONS SHOWN ARE FINISH SURFACE OF EXISTING CONSTRUCTION, UNLESS NOTED OTHERWISE.
4. CONTRACTOR SHALL VERIFY ALL EXISTING DIMENSIONS AND CONDITIONS (I.E. EXISTING MATERIALS, FRAMING MEMBER SIZES AND LOCATIONS, METHODS OF CONSTRUCTION). IF DISCREPANCIES ARE FOUND, NOTIFY ARCHITECT BEFORE PROCEEDING WITH WORK.
5. CONTRACTOR SHALL PAY ALL PERMIT FEES.
6. CONTRACTOR SHALL MAINTAIN THE IMMEDIATE CONSTRUCTION SITE IN A SECURE, CLEAN AND SAFE MANNER.
7. PROTECTION: CONTRACTORS SHALL BE SOLELY RESPONSIBLE FOR TAKING ALL STEPS NECESSARY TO PROTECT THE PUBLIC FROM INJURY AND ADJACENT PROPERTY DAMAGES DURING CONSTRUCTION AS REQUIRED BY LOCAL CODES.
8. REPAIR ALL EXISTING CONSTRUCTION AFFECTED BY NEW WORK TO ITS ORIGINAL CONDITION.

ISSUED FOR BID

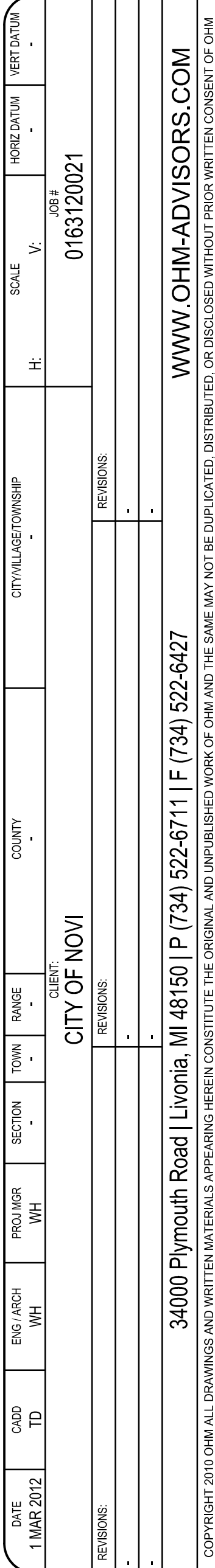
Project No. 0163120021
Date: 1 MAR 2012

DRAWING INDEX:

TITLE SHEET	
ARCHITECTURAL	
A001	ABBREVIATIONS, SYMBOLS, AND CODE REVIEW
A101	FLOOR PLAN
A201	EXTERIOR ELEVATIONS
A401	SCHEDULES & DETAILS

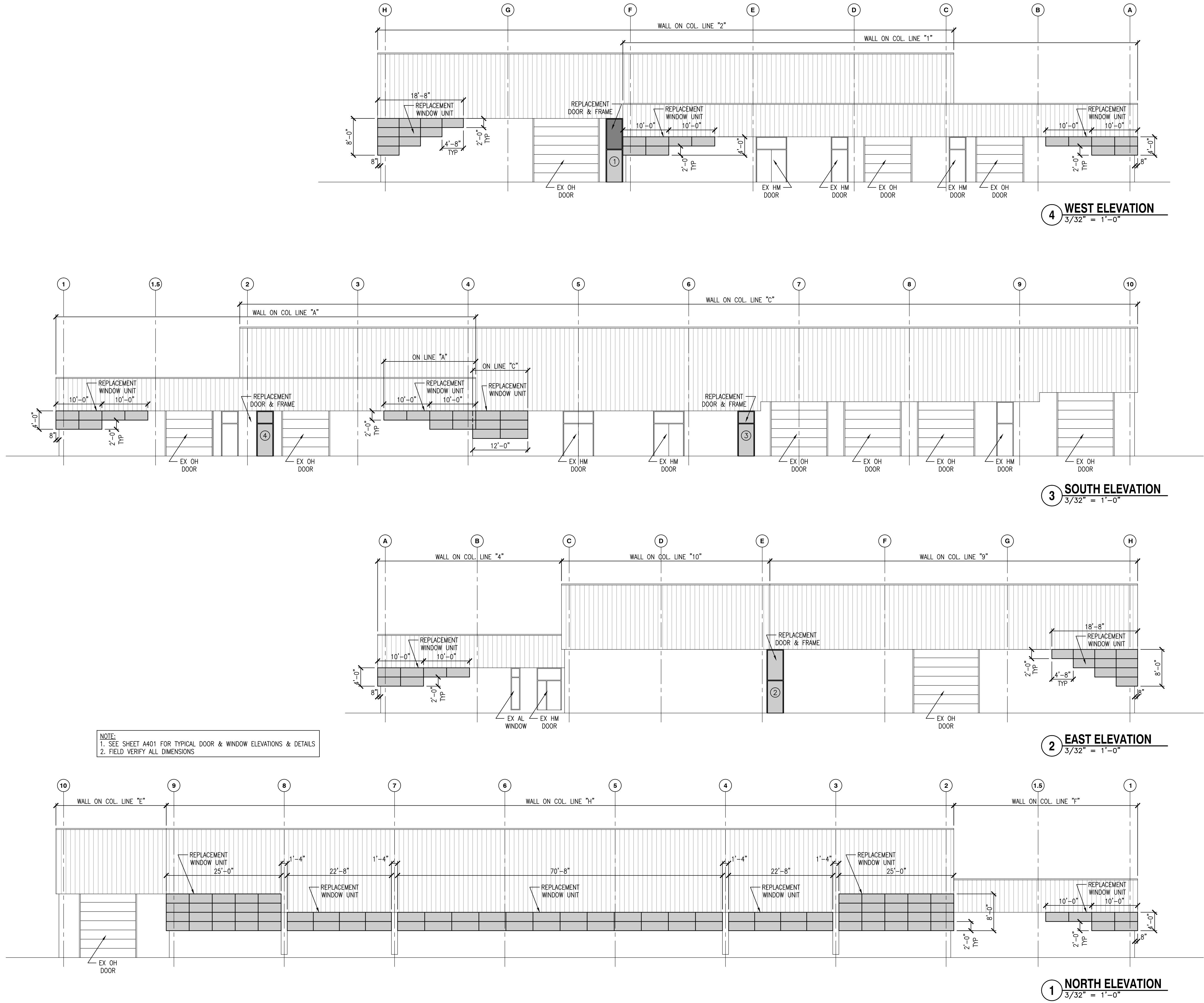
I Certify That The Architectural Plans Were Prepared Under My Direct Supervision

1 BUILDING FLOOR PLAN $\frac{3}{32}'' = 1'-0''$ 



SHEET
A101

DRAWING PATH: P:\1000_7100_Livonia\016312002_1_novi field services complex\HANCOCK\Drawings\new livonia facilities project\Sheets\016312002-A201.dwg Mar 06, 2012 - 1:22pm

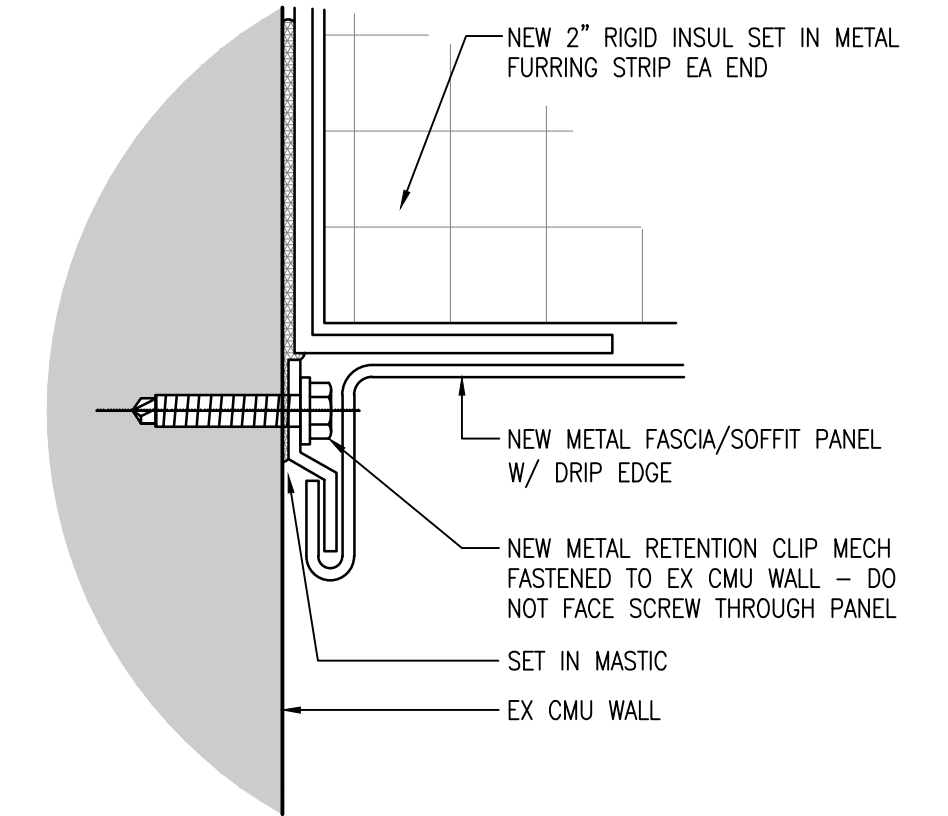


City of Novi - Field Services Complex
EXTERIOR ELEVATIONS

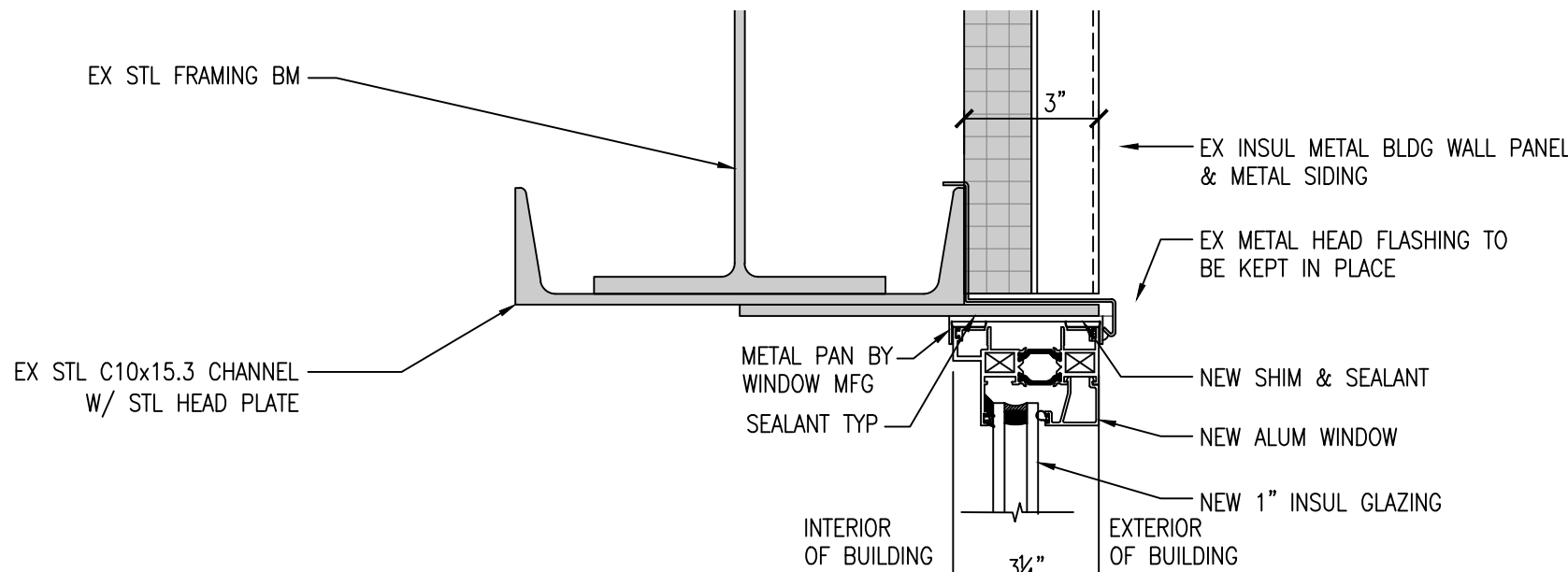
SHEET
A201

DATE	CAAD	ENG ARCH	PROJ / GR	SECTION	TOWN	RANGE	COUNTY	CITY/VILLAGE/TOWNSHIP	H:	SCALE	V:	HORIZ DATUM	VERT DATUM
1 MAR 2012	TD	WH	WH										
CLIENT: CITY OF NOVI										JOB #			
										0163120021			
REVISIONS										REVISIONS			

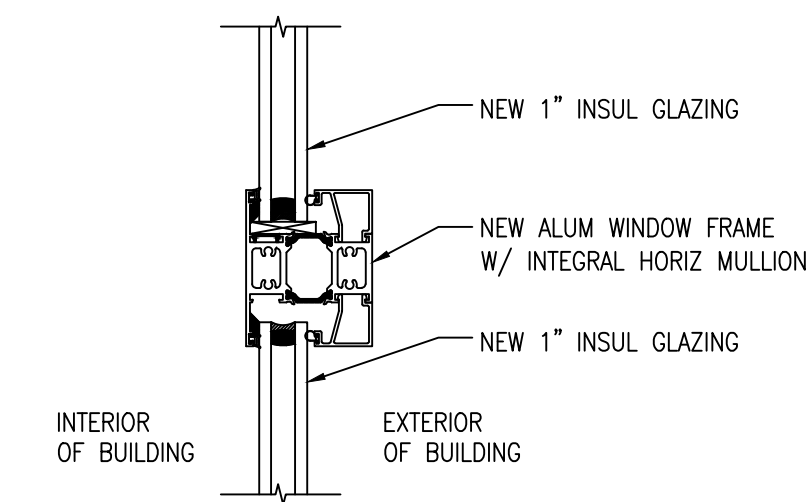
DRAWING PATH: P:\1000_7100_Livonia\016312002_1_novi field services complex_HANCOCK\Drawings\new livonia facilities project\Sheets\016312002-1A401.dwg Mar 06, 2012 - 1:22pm



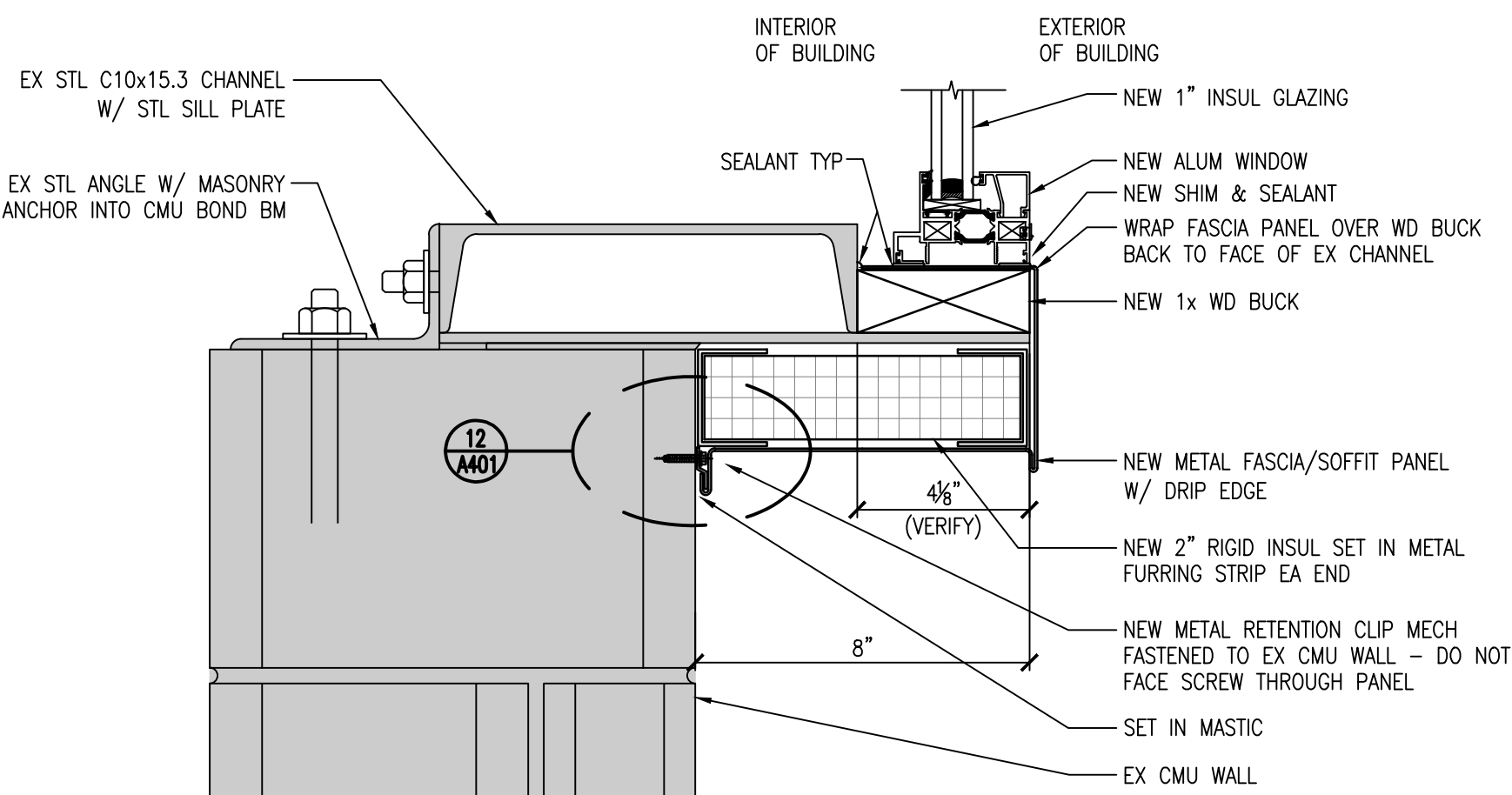
12 DOOR RETENTION CLIP DETAIL
NO SCALE



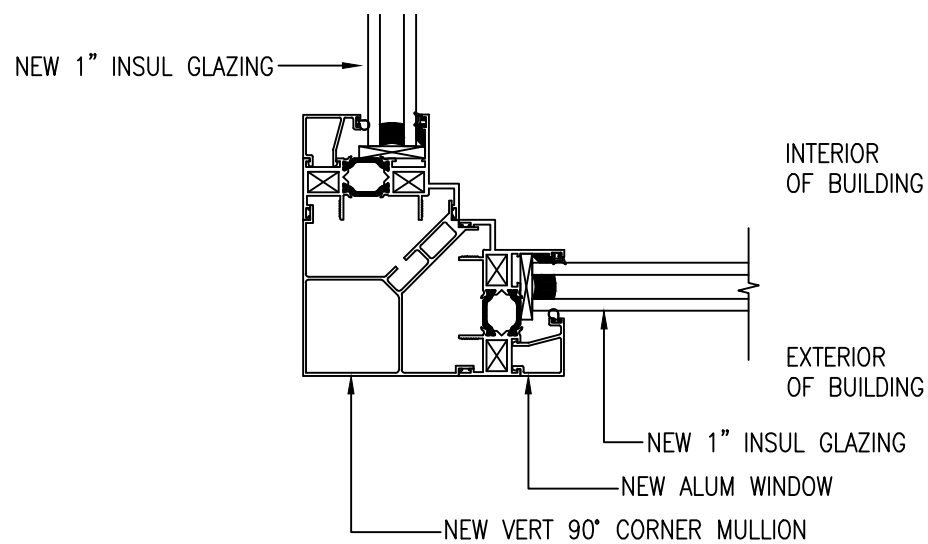
11 WINDOW HEAD DETAIL
NO SCALE



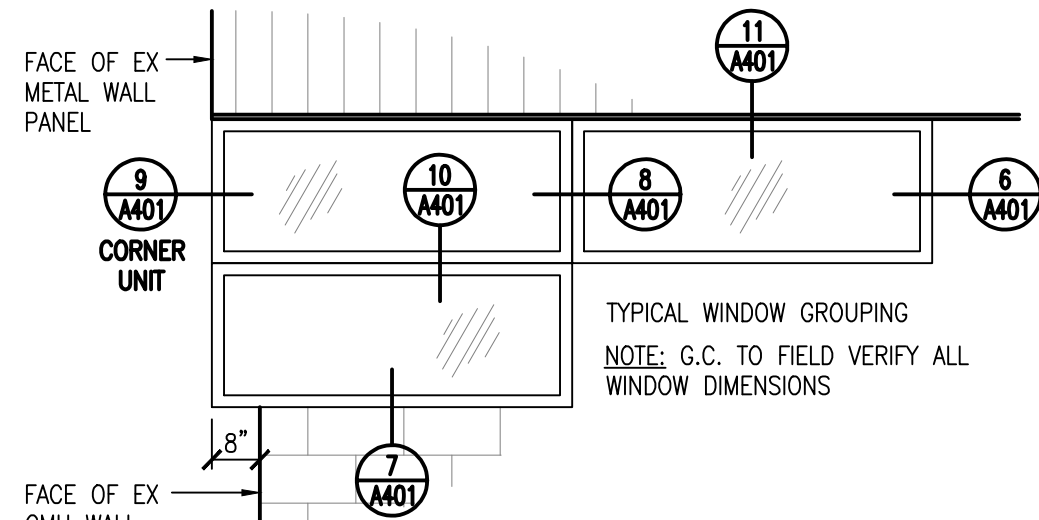
10 WINDOW HORIZONTAL MULLION DETAIL
NO SCALE



7 WINDOW SILL DETAIL
NO SCALE

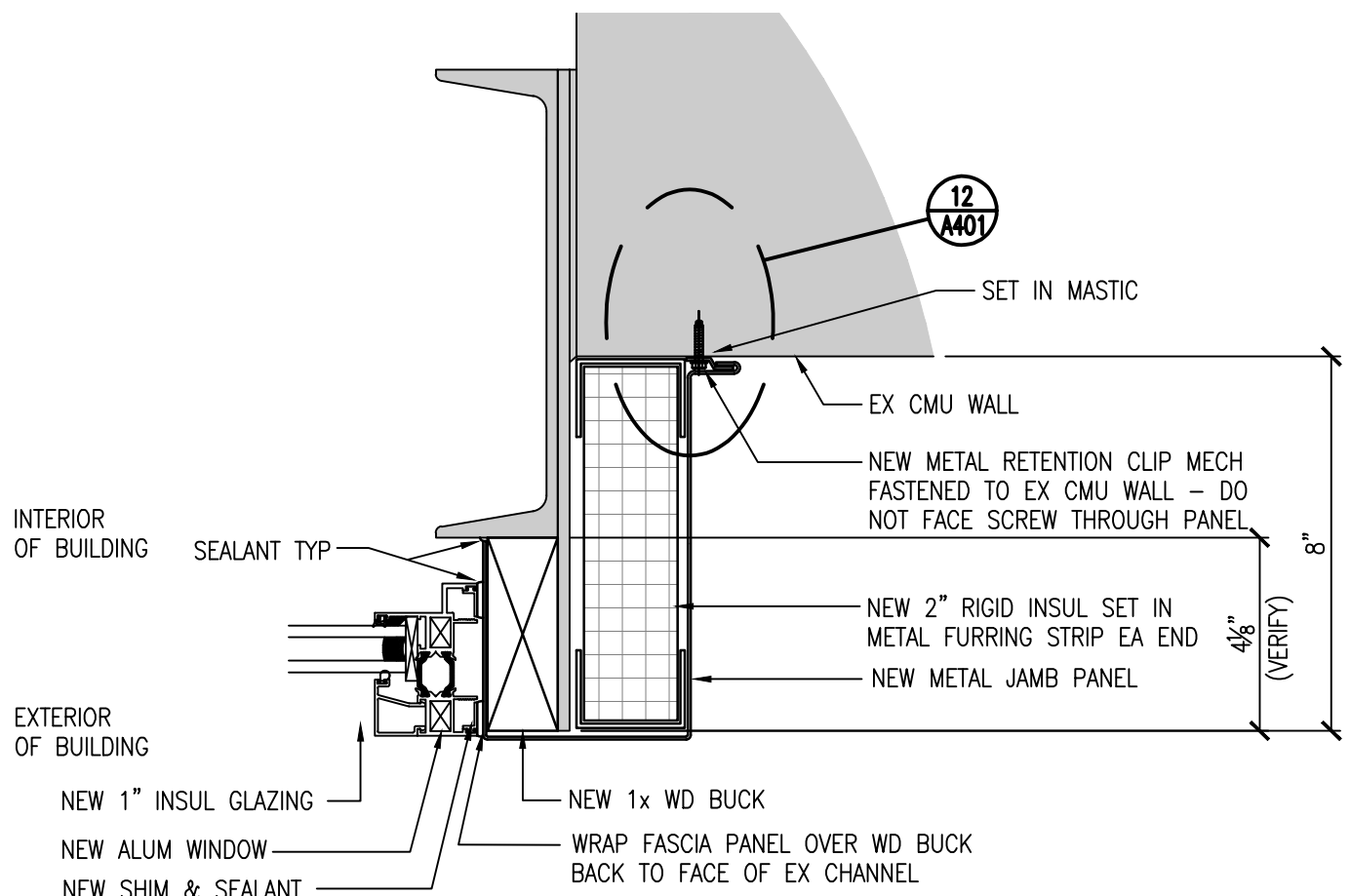


9 WINDOW VERTICAL OUTSIDE CORNER DETAIL
NO SCALE

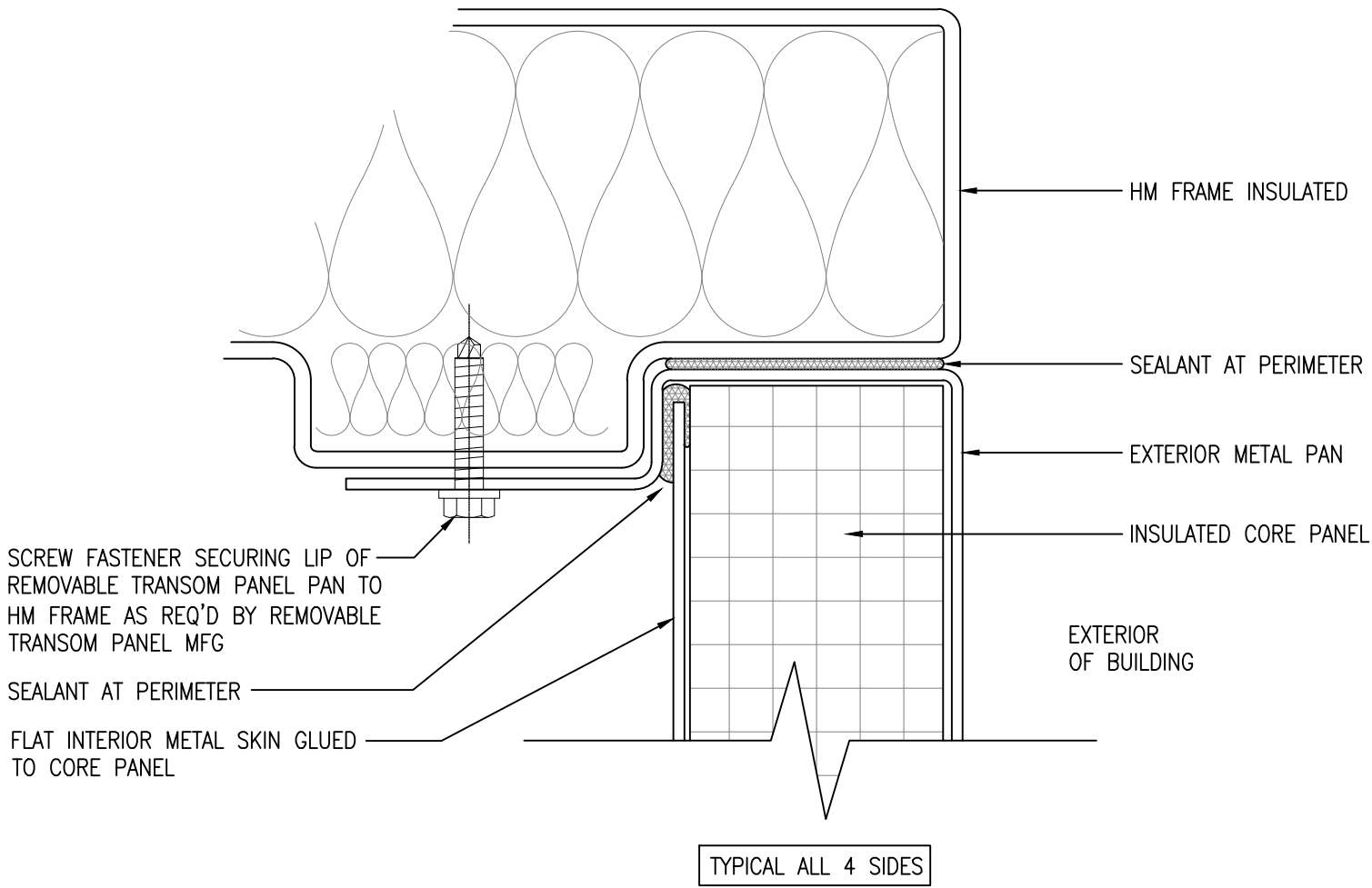


TYPICAL WINDOW ELEVATION

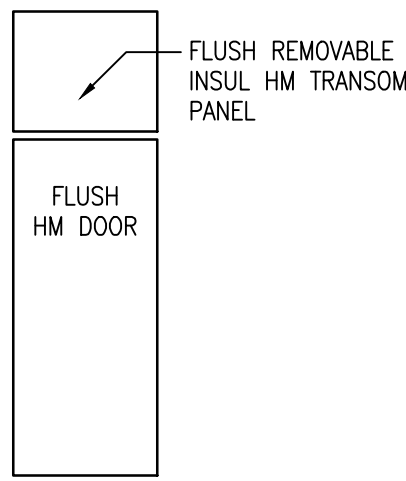
8 WINDOW VERTICAL MULLION DETAIL
NO SCALE



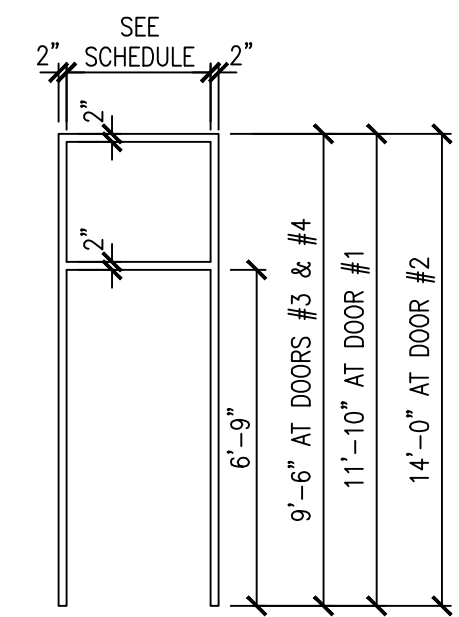
6 WINDOW JAMB DETAIL
NO SCALE



5 DOOR TRANSOM PANEL DETAIL
NO SCALE



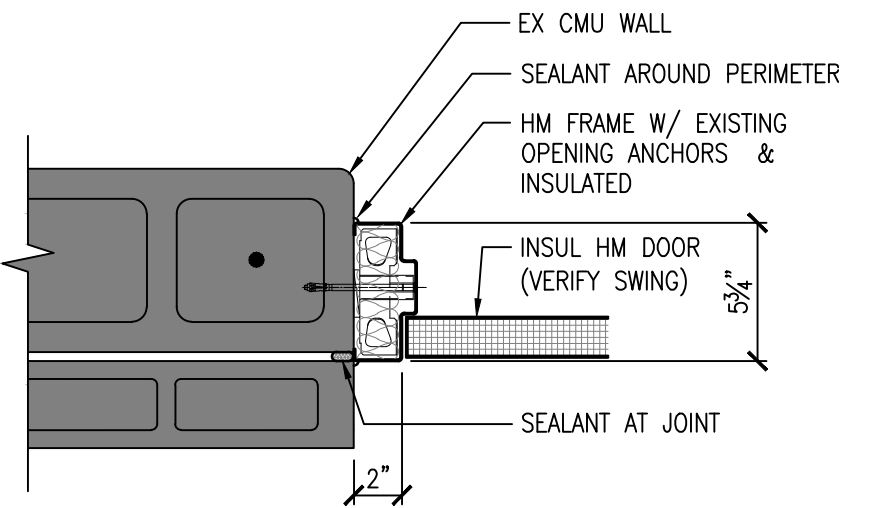
DOOR TYPE



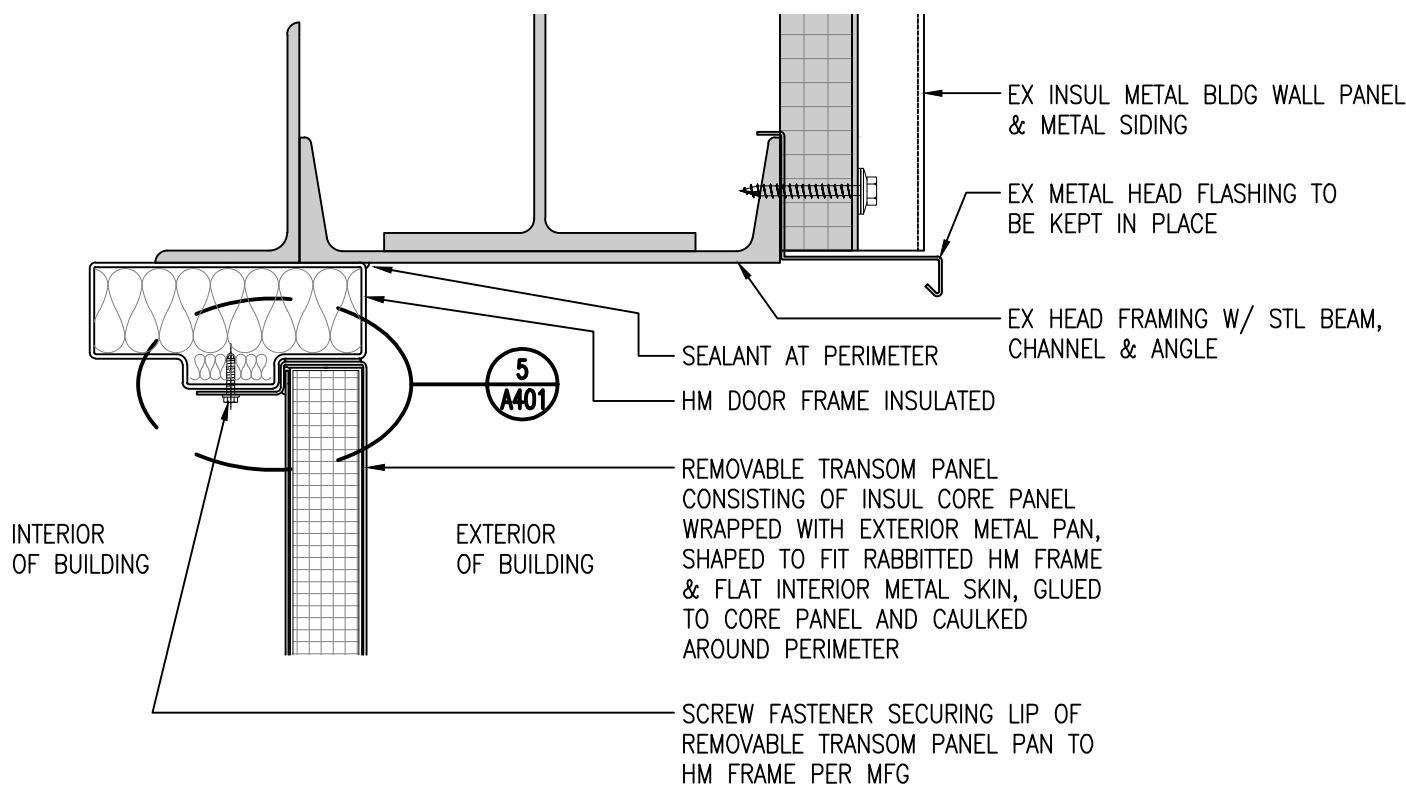
FRAME TYPE

DOOR, FRAME & HARDWARE SCHEDULE											
DOOR NUMBER	DOOR			FRAME				FIRE RATING (MIN)	HARDWARE SET	SIGNAGE	REMARKS
	SIZE	MATERIAL	TYPE	MATERIAL	TYPE	HEAD	JAMB				
1	3'-4" x 6'-9"	HM	F	HM	1	2/3	4	1	--	--	PROVIDE HARDWARE TO COORD W/ KEY CARD ACCESS
2	3'-4" x 6'-9"	HM	F	HM	1	2/3	4	1	--	--	--
3	3'-4" x 6'-9"	HM	F	HM	1	2/3	4	1	--	--	--
4	3'-0" x 6'-9"	HM	F	HM	1	2/3	4	1	--	--	--

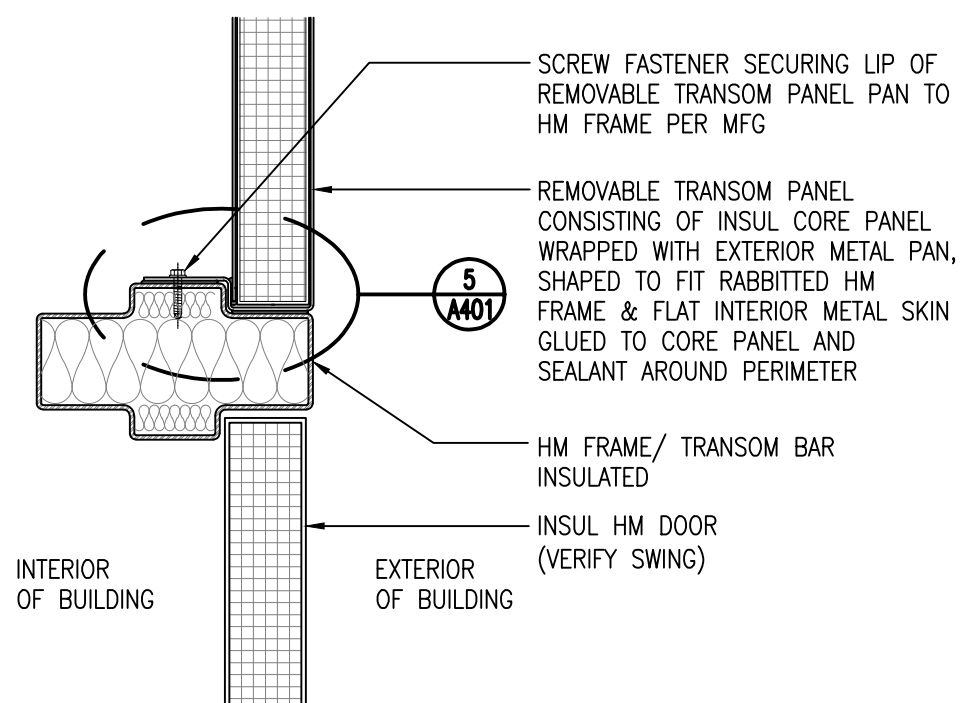
- DOOR, FRAME & HARDWARE NOTES:
- HARDWARE FINISH SHALL MATCH EXISTING.
 - FIELD VERIFY ALL DOOR DIMENSIONS.



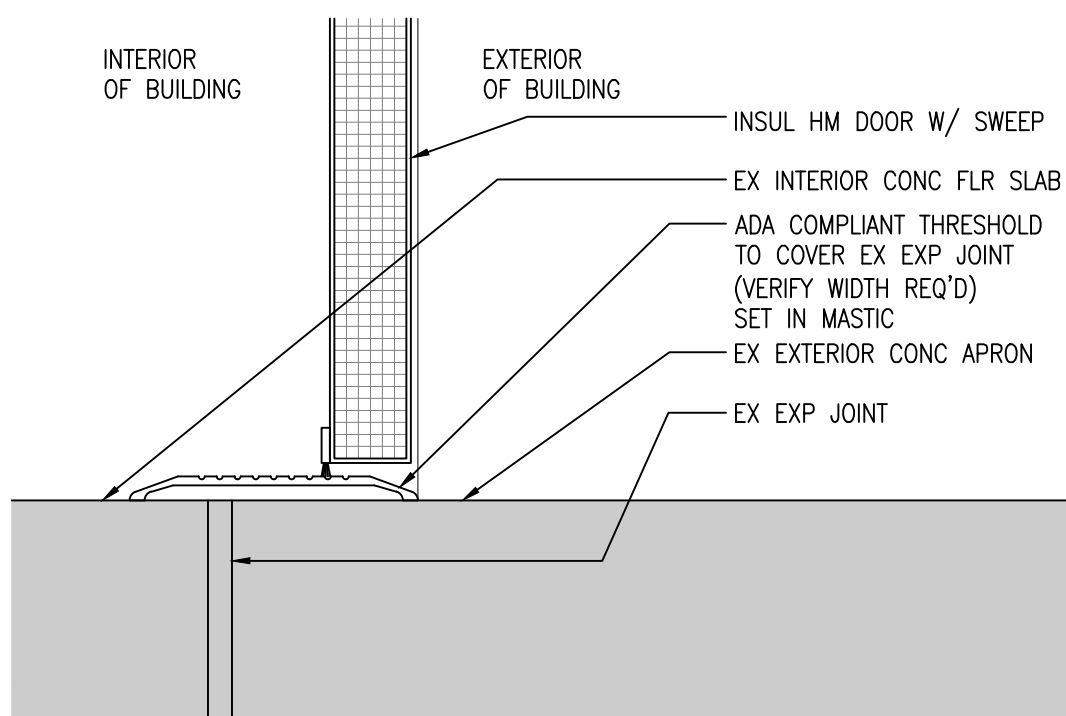
4 DOOR FRAME JAMB DETAIL
NO SCALE



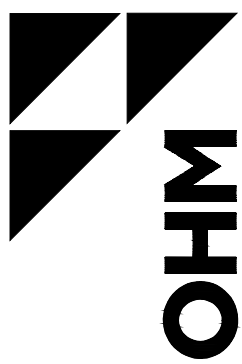
3 DOOR FRAME HEAD DETAIL
NO SCALE



2 DOOR FRAME TRANSOM BAR DETAIL
NO SCALE



1 DOOR SILL DETAIL
NO SCALE



DATE	CADD	ENG / ARCH	PROJ / IGR	TOWN	RANGE	COUNTY	CITY / VILLAGE / TOWNSHIP	SCALE	HORIZ DATUM	VERT DATUM
1 MAR 2012	TD	WH	WH				CITY OF NOVI			
CLIENT: CITY OF NOVI										
JOB #: 0163120021										
REVISIONS										
REVISIONS										
REVISIONS										

City of Novi - Field Services Complex
SCHEDULES & DETAILS

SHEET
A401

34000 Plymouth Road | Livonia, MI 48150 | P (734) 522-6711 | F (734) 522-6427
WWW.OHM-ADVISORS.COM
COPYRIGHT 2010 OHM ALL DRAWINGS AND WRITTEN MATERIALS APPEARING HEREIN CONSTITUTE THE ORIGINAL AND UNPUBLISHED WORK OF OHM AND THE SAME MAY NOT BE DUPLICATED, DISTRIBUTED, OR DISCLOSED WITHOUT PRIOR WRITTEN CONSENT OF OHM