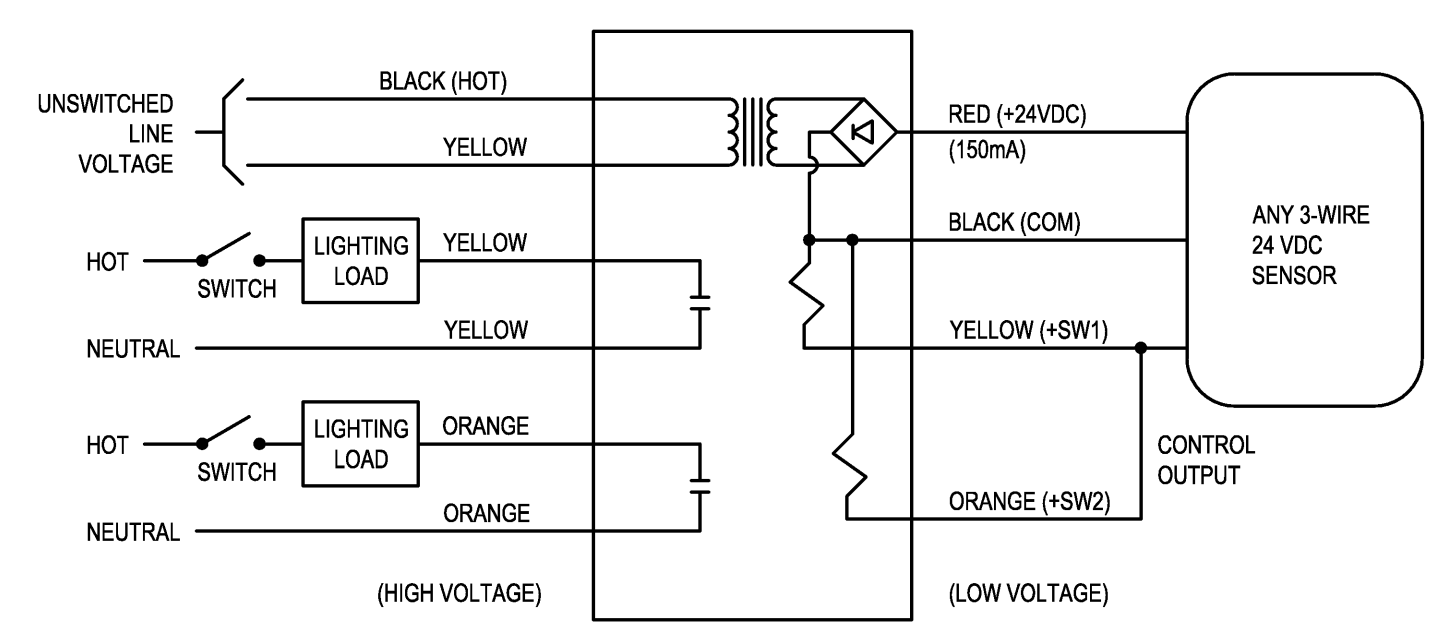
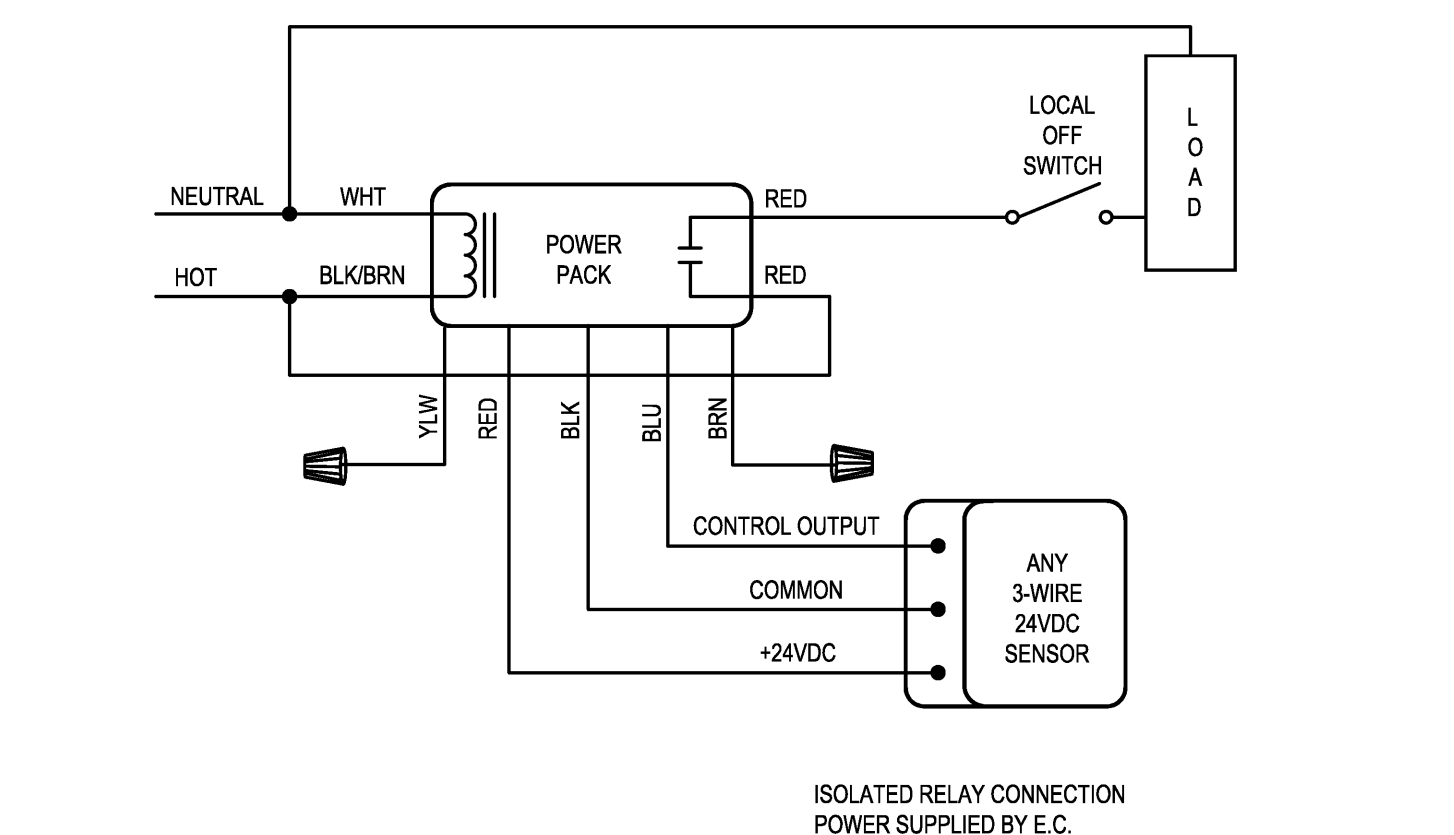


PP1 WIRING WITH OCCUPANCY SENSOR
SCALE: N.T.S.

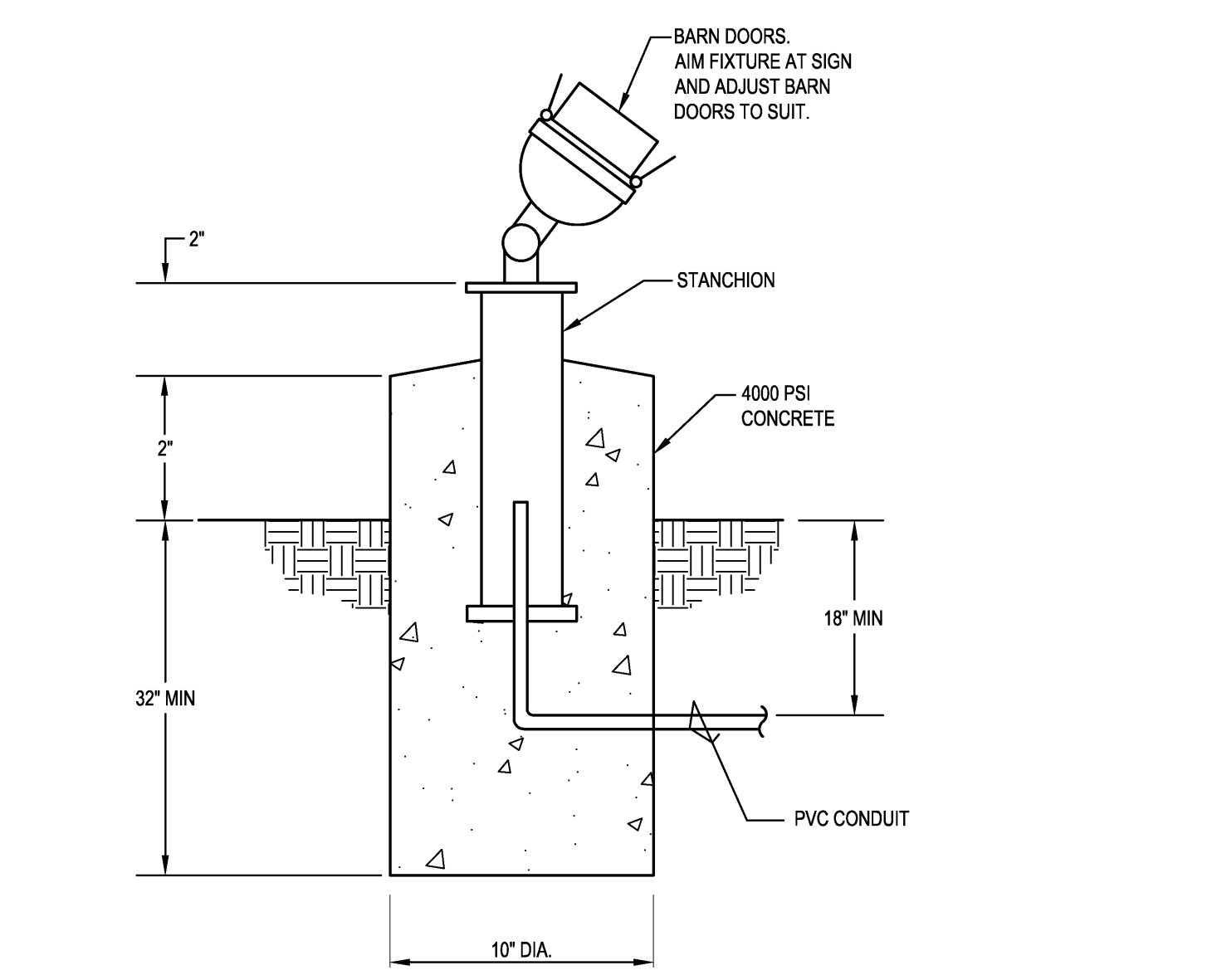


PP2 WIRING WITH OCCUPANCY SENSOR
SCALE: N.T.S.

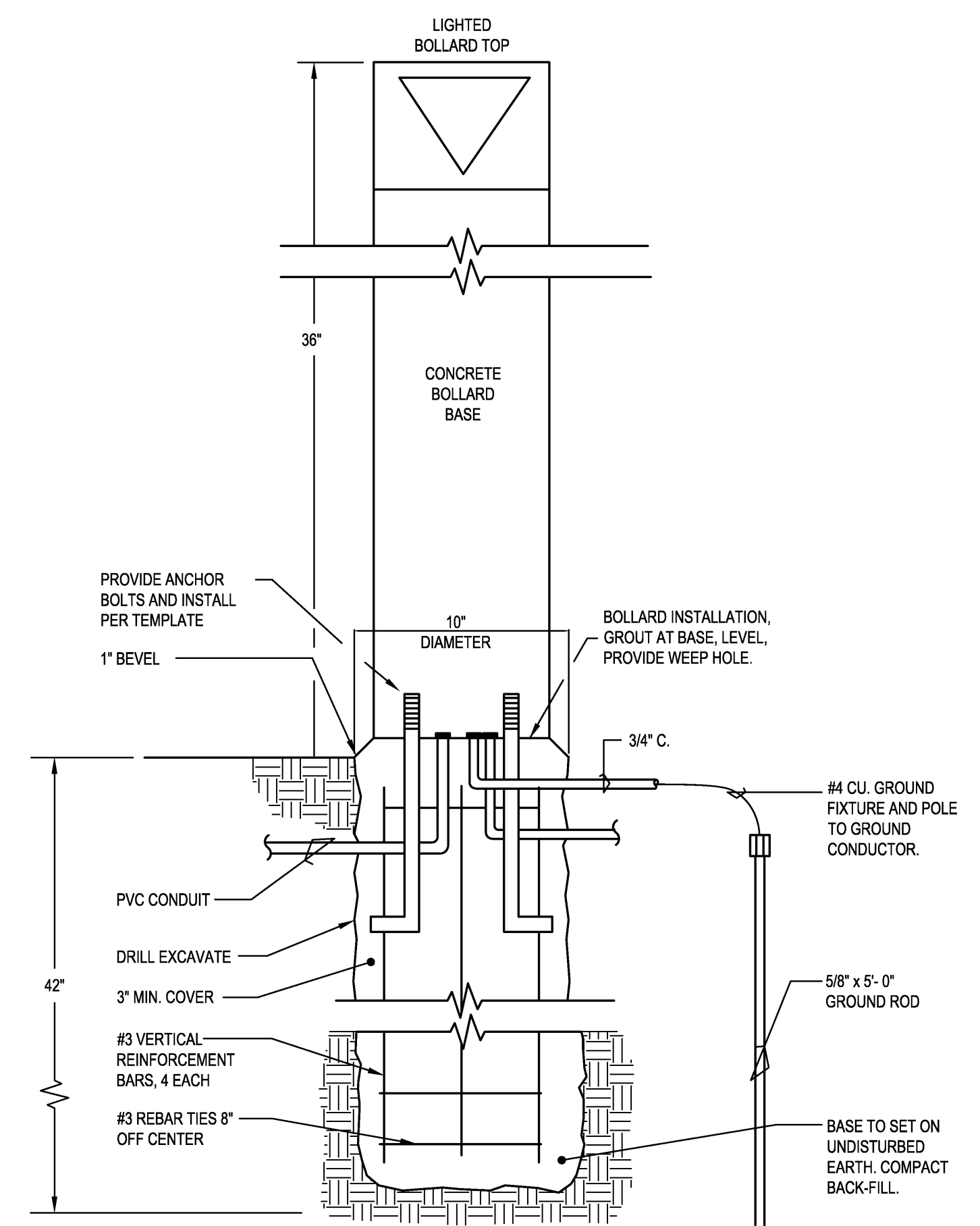


TYPICAL OCCUPANCY SENSOR
SCALE: N.T.S. COORDINATE WIRING WITH BLTC DEVICE AS REQUIRED

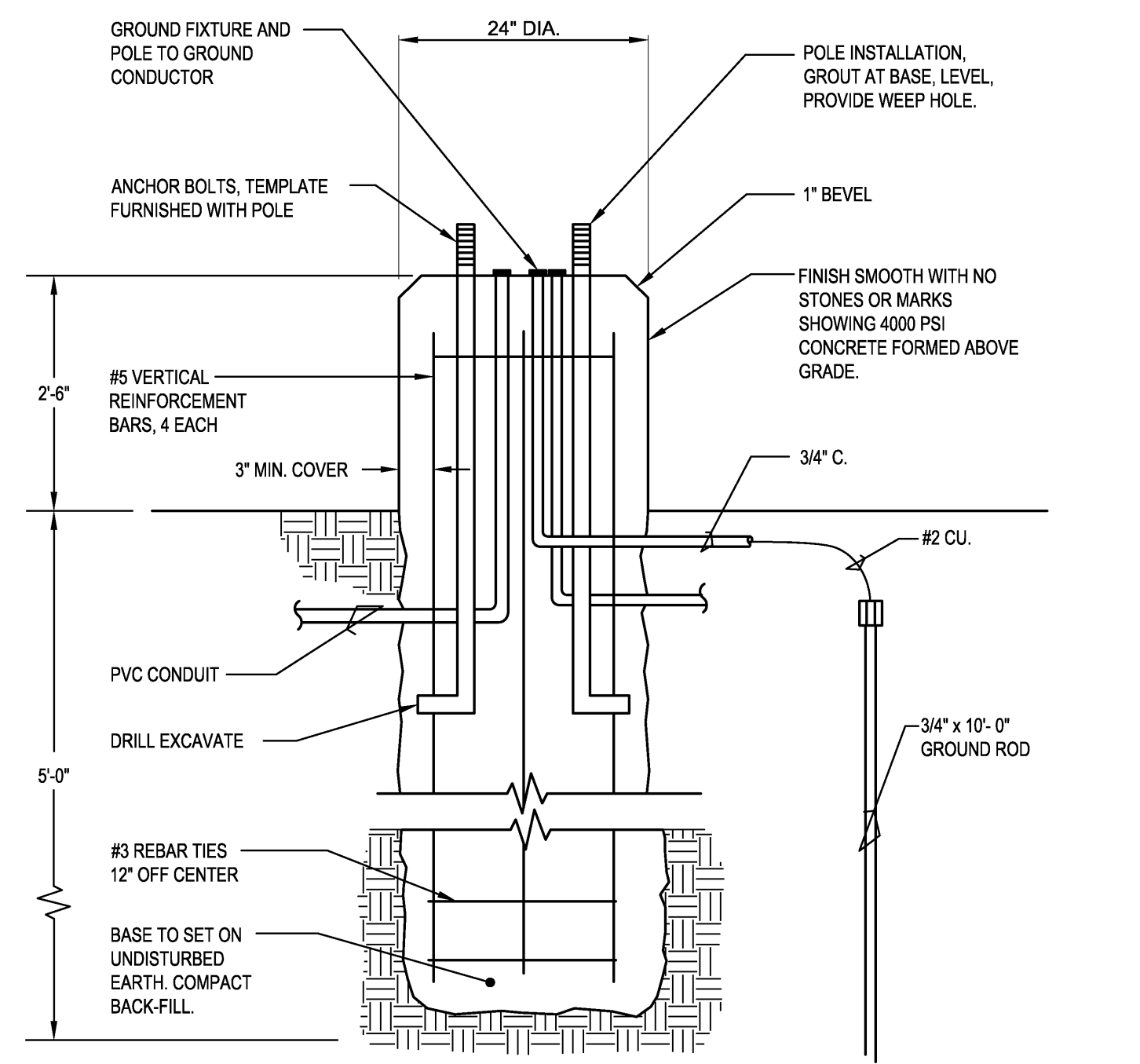
LIGHTING CONTROLS LEGEND			
MARK	DESCRIPTION	MODEL No.	COMMENTS
	DUAL TECHNOLOGY CORNER MOUNTED SENSOR	SENSOR SWITCH #WV-PDT-16	
	DUAL TECHNOLOGY WALL SWITCH SENSOR	SENSOR SWITCH #WSQ-PDT	
	DUAL VOLTAGE SENSOR ONE RELAY POWER PACK, 120V	SENSOR SWITCH #MP-20	REQUIRED ON OS1 AND OS2
	DUAL VOLTAGE SENSOR TWO RELAY POWER PACK, 120V	SENSOR SWITCH #MSP-20	REQUIRED ON OS1 AND OS2



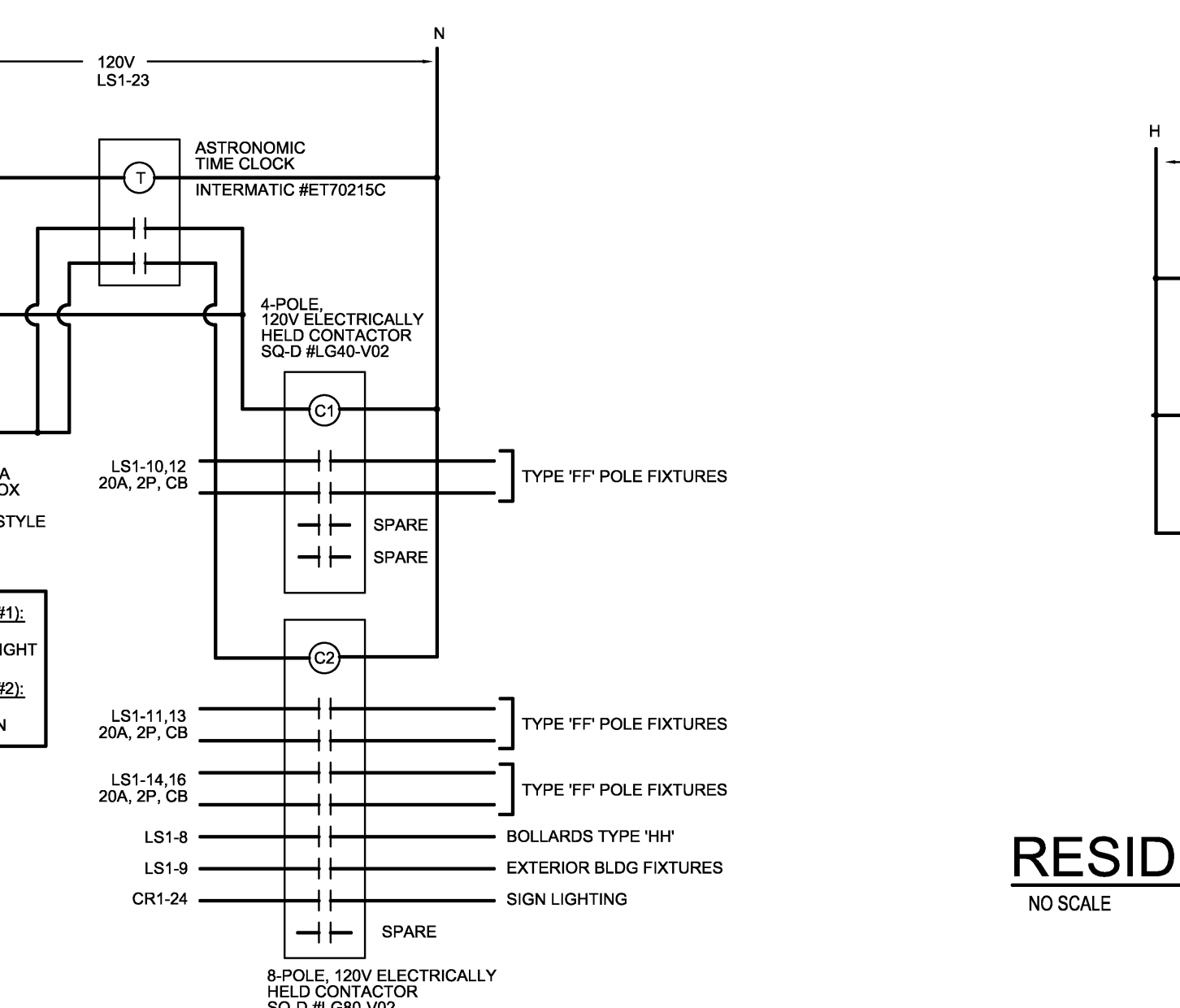
GROUND FLOOD BASE DETAIL
SCALE: N.T.S.



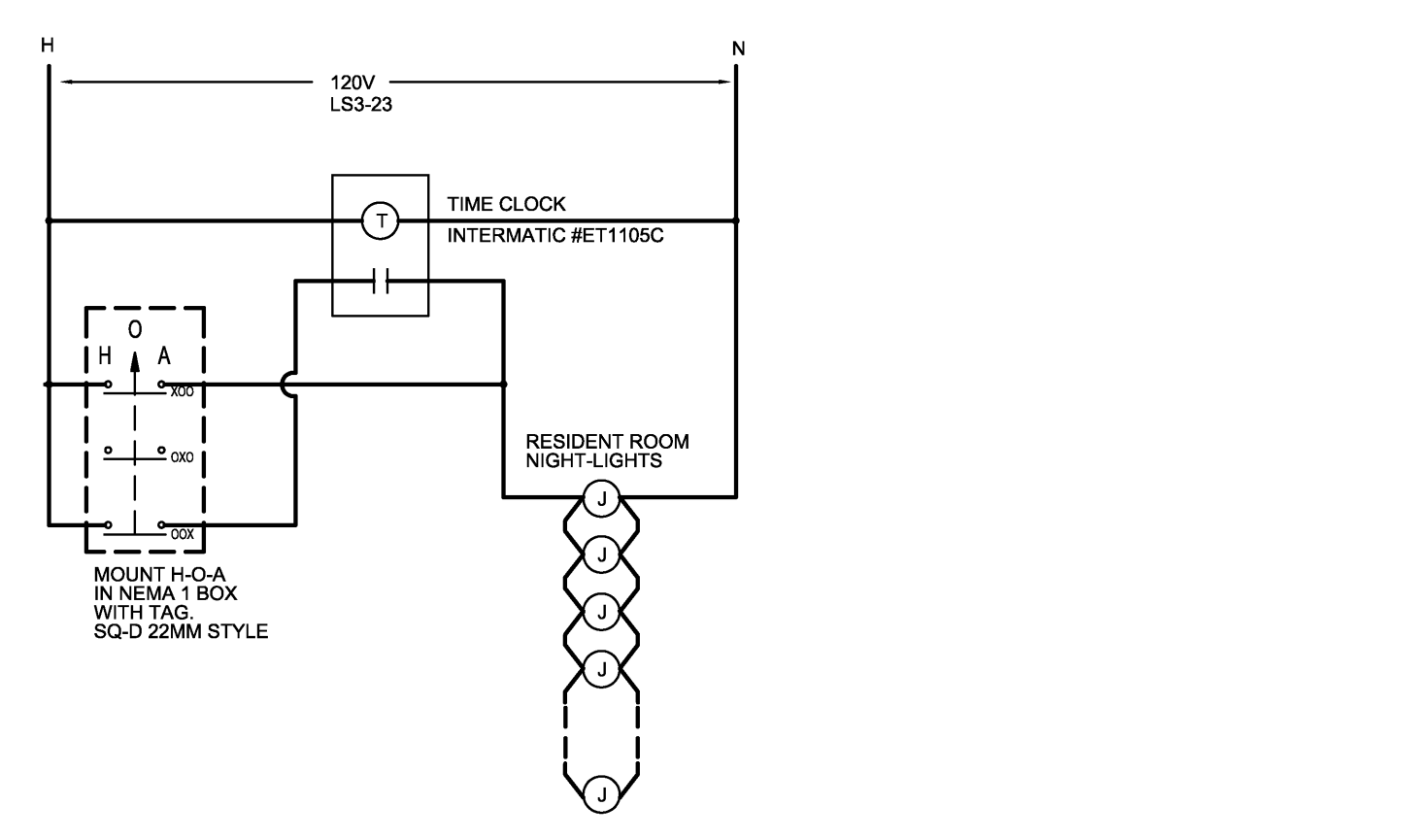
BOLLARD BASE DETAIL
SCALE: N.T.S.



SITE LIGHTING POLE BASE DETAIL
SCALE: N.T.S.



EXTERIOR LTG CONTROL DAGRAM
NO SCALE



RESIDENT NIGHT LIGHT CONTROL
NO SCALE

GENERAL LIGHTING NOTES

- INTERCONNECTIONS BETWEEN LIGHT FIXTURES SHOWN ON PLANS REPRESENT CIRCUITING AND SWITCHING ONLY. INSTALL ACTUAL CIRCUITING FOR SHORTEST DISTANCE POSSIBLE TO MINIMIZE VOLTAGE DROP.
- ALL EXIT AND EMERGENCY LIGHTS SHOWN WITHOUT CIRCUITING INFORMATION TO BE CONNECTED TO NEAREST EMERGENCY LIGHT CIRCUIT AND AHEAD OF SWITCHES.
- CLEAN AND RE-LAMP FIXTURES AS NECESSARY AT TIME OF PROJECT TURNOVER TO OWNER.
- ALL LIGHTING TO HAVE PROPER HANGERS, SUPPORTS, AND PLASTER FRAMES AS NEEDED FOR COMPLETE INSTALLATION.
- INSTALL PHOTOCELL SO THAT HEADLIGHTS, SECURITY LIGHTS, ETC. WILL NOT AFFECT THEIR OPERATION.
- DIMMING SWITCHES TO BE RATED AT A MINIMUM OF 125% ACTUAL LOAD.
- FINAL LAYOUT OF EXIT AND EMERGENCY LIGHTS TO BE CHECKED BY THE PROPER AUTHORITIES FOR ADEQUATE COVERAGE.
- ELECTRICAL CONTRACTOR SHALL REFER TO ARCHITECTURAL REFLECTED CEILING PLANS FOR EXACT LOCATION OF LIGHT FIXTURE LAYOUT. CONTRACTORS TO COORDINATE LOCATIONS OF LIGHTING, SPEAKERS, AIR DIFFUSERS, GRILLES, ETC. WITH REFLECTED CEILING LAYOUTS AS REQUIRED AND DIRECTED BY THE ARCHITECT.
- COORDINATE CEILING GRIDS SUPPORT LOCATIONS WITH CEILING INSTALLER TO MEET LOCAL INSPECTORS REQUIREMENTS. ELECTRICAL CONTRACTOR SHALL BEAR ANY EXTRA EXPENSE FOR FURNISHING ADDITIONAL SUPPORT IF PROPER COORDINATION IS NOT ACCOMPLISHED.
- COORDINATE WITH GENERAL CONTRACTOR THE PLACEMENT OF PROPER BACKING MATERIAL FOR INTERIOR AND EXTERIOR LIGHT FIXTURES.
- VERIFY MOUNTING HEIGHTS OF WALL SWITCHES IN BATHROOMS OR OTHER AREAS WHERE CERAMIC TILE IS INSTALLED PART WAY UP THE WALL SO THAT BOX IS EITHER ALL THE WAY ON THE TILE OR DRYWALL. SEE BARRIER FREE REQUIREMENTS ALSO.
- SEE DETAIL SHEETS FOR OCCUPANCY SENSOR INFORMATION AND WIRING DIAGRAMS.

LIGHT FIXTURE SCHEDULE			
TYPE	CATALOG NUMBER	LAMPS	DESCRIPTION
A	LITHONIA #2GT8-232-A12125-MVOLT-GE810IS OR EQUAL BY METALUX, COLUMBIA, HOLOPHANE, LIGHTOLIER.	(2) 32W T8 SP35	2X4 LAY-IN TROFFER, (2) T8 LAMPS, ACRYLIC LENS, MULTI-VOLT ELECTRONIC BALLAST.
B	LITHONIA #2GT8-332-A12125-MVOLT-GE810IS OR EQUAL BY METALUX, COLUMBIA, HOLOPHANE, LIGHTOLIER.	(3) 32W T8 SP35	2X4 LAY-IN TROFFER, (3) T8 LAMPS, ACRYLIC LENS, 2 MULTI-VOLT ELECTRONIC BALLASTS.
C	LITHONIA #2GT8-317-A12125-MVOLT-113-GE810IS OR EQUAL BY METALUX, COLUMBIA, HOLOPHANE, LIGHTOLIER.	(3) 17W T8 SP35	2X2 LAY-IN TROFFER, (3) T8 LAMPS, ACRYLIC LENS, MULTI-VOLT ELECTRONIC BALLAST.
D	LITHONIA #GT8F-232-A12125-MVOLT-GE810IS OR EQUAL BY METALUX, COLUMBIA, HOLOPHANE, LIGHTOLIER.	(2) 32W T8 SP35	1X4 FLANGED RECESSED TROFFER, (2) T8 LAMPS, ACRYLIC LENS, MULTI-VOLT ELECTRONIC BALLAST.
E1	VISA UNITY #CM1902-5F40-MWAC-MVOLT	(5) 40W BIAH SP35	2x2 SURFACE MOUNTED, 3-LEVEL READING/AMBIENT/EXAM LIGHT, (5) LAMPS, ACRYLIC LENS, MULTI-VOLT ELECTRONIC BALLASTS.
E2	VISA UNITY #CM1903-4F40-MWAC-MVOLT	(4) 40W BIAH SP35	2x2 SURFACE MOUNTED 2-LEVEL AMBIENT/EXAM LIGHT, (4) LAMPS, ACRYLIC LENS, MULTI-VOLT ELECTRONIC BALLASTS.
F	LITHONIA #LB-217-MVOLT-GE810PS OR EQUAL BY METALUX, COLUMBIA, HOLOPHANE, LIGHTOLIER.	(2) 17W T8 SP35	1X2 SURFACE MOUNTED TROFFER, (2) T8 LAMPS, ACRYLIC LENS, MULTI-VOLT ELECTRONIC BALLAST.
G	LITHONIA #LA-232-MVOLT-GE810IS OR EQUAL BY METALUX, COLUMBIA, HOLOPHANE, LIGHTOLIER.	(2) 32W T8 SP35	1X4 INDUSTRIAL FLUORESCENT FIXTURE, (2) T8 LAMPS, UPLIGHT, MULTI-VOLT ELECTRONIC BALLAST.
H	LIGHTING SCIENCE GLIMPSE #IGLP6-W27-WH	LED (INCL)	6" SURFACE MOUNTED LED CAN FIXTURE, 27K LAMPS, WHITE FINISH, OPAL LENS, 120V, DIMMABLE. MOUNTS TO RECESSED CEILING BOX.
J	KENALL #MSL-L-0-DB-8-ALL-120-3	LED (INCL)	LED IN-THE-WALL NIGHT LIGHT, AMBER COLOR LEDS, DARK BRONZE FINISH, INTERNAL LOUVER, CLEAR GLASS LENS, 120V.
K	SCOTT ARCHITECTURAL #S3720-2C26E-PTBZ-TL-BL-120V	(2) 26W QUAD 4-PIN FLUORESCENT SP35	2" WALL MOUNTED VANITY FIXTURE, PAINTED BRONZE FINISH, WHITE DIFFUSER, 2 LAMPS, TOP AND BOTTOM LENSING, 120V.
L	HUBBARDTON FORGE #126709-17	19W SCREW IN FLUORESCENT	13" DIAMETER SURFACE MOUNT DRUM, DARK SMOKE FINISH, 120V.
M	HUBBARDTON FORGE #205810-17	9W SCREW IN FLUORESCENT	18" WALL SCONCE, DARK SMOKE FINISH, 120V.
N	HUBBARDTON FORGE #126422-17	23W SCREW IN FLUORESCENT	14" DROP PENDANT, DARK SMOKE FINISH, 120V.
P	HUBBARDTON FORGE #305810-17	19W SCREW IN FLUORESCENT	13" WALL SCONCE, DARK SMOKE FINISH, 120V.
R	HUBBARDTON FORGE #365810-17	23W SCREW IN FLUORESCENT	13" PENDANT, DARK SMOKE FINISH, 120V.
T	COLOR KINETICS EW COVE POWERCORE #523-000004-60	LED (INCL)	12" LED COVE LIGHTING, 2,700 DEGREE K WITH JUNCTION BOX, LEADER CABLE TERMINATIONS AND STRAIN RELIEF #108-000032-00, 120V
U	LITHONIA #FINESSE #N2S-17-MVOLT-GE810IS-SWR OR EQUAL BY METALUX, COLUMBIA, HOLOPHANE, LIGHTOLIER.	(1) 17W T8 SP35	2" UNDER CABINET LIGHT FIXTURE, ACRYLIC LENS, ROCKER SWITCH, 120V.
V	QUORUM INTERNATIONAL (MONACO) #135525		52" WHITE, PALM LEAF (5) BLADE CEILING FAN, 120V. PROVIDE WITH FORWARD/REVERSE/SPEED SWITCH FROM MANUFACTURER.
W	LITHONIA #LOC-112-R OR EQUAL BY METALUX, COLUMBIA, HOLOPHANE, LIGHTOLIER.	LED (INCL)	LED DIE CAST EXIT SIGN, MATTE BLACK WITH BRUSHED ALUMINUM FACE, RED STENCIL LETTERS, UNIVERSAL MOUNT, 120/277V.
FF	LITHONIA #AS2-250M-SRASC-208-SPA-DF (FIXTURE) LITHONIA #HSH-20-4F (POLE)	(1) 250W CLEAR MH	AREA SITE LIGHT FIXTURE ON 20' TALL HINGED POLE, 250W MH LAMP, TYPE 4 OPTICS, DARK BRONZE, 208V. POLE FINISH TO MATCH FIXTURE. PROVIDE BOLTS.
HH	LITHONIA #KBD8-70M-LV-120-SF-H36	(1) 70W CLEAR MH	8" DIAMETER BOLLARD, 70W MH, LOUVERS, 36" OVERALL HEIGHT, DARK BRONZE, 120V. FURNISH WITH ANCHOR BOLTS.
JJ	HYREL #7000-70CMT6-120-MFL-KM-SMSA-BD-BZ	(1) 70W CLEAR T8 CMH	12" METAL HALIDE MEDIUM FLOOD LIGHT, KNUCKLE MOUNT ON STANCHION, BARN DOORS, DARK BRONZE, 120V.

LIGHTING LEGEND		
SYM	DESCRIPTION	HGT
OS1	CEILING MOUNT SINGLE DUAL-TECH OCC. SENSOR	
	1x4' CEILING LIGHTING FIXTURE	
	2' UNDER CABINET LIGHT	
	2x2' CEILING LIGHTING FIXTURE	
	2x4' CEILING LIGHTING FIXTURE	
	4' WALL MOUNTED LIGHT	
	CAN LIGHT	
	WALL MOUNTED LIGHT	
	CLOCK	
	EXIT, 1-WAY	
	EXIT, 2-WAY	
	PATIENT NIGHT LIGHT	
	PHOTO EYE	
	SWITCH, SINGLE POLE	48"
	SWITCH, 3-WAY	48"
	SWITCH, 4-WAY	48"
	SWITCH, DIMMER	48"
	SWITCH, OCCUPANCY SENSOR	48"
	SWITCH, WEATHERPROOF	48"

MOUNTING HEIGHTS ARE AS GIVEN UNLESS NOTED OTHERWISE ON THE PLANS.

THE COTTAGE at THORNAPPLE

Hastings, MI

PROJ. NO.: 2011-11-021

02/21/12 ISSUED FOR BIDS

CONSTRUCTION MANAGER
CM CONTRACTING
CIVIL ENGINEER
HURLEY & STEWART
STRUCTURAL ENGINEER
JDH ENGINEERING
MEP ENGINEER
E2W ENGINEERING
FOOD SERVICE CONSULTANT
MILLIS & ASSOCIATES

ECKERT WORDELL
ARCHITECTURE • ENGINEERING • INTERIOR DESIGN
161 East Michigan Ave., Suite 200
Kalamazoo, MI 49007-3907
PHONE: 269.388.7313
FAX: 269.388.7330
WEB: www.eckert-wordell.com
© 2011 Eckert Wordell, LLC

LIGHTING SCHEDULES AND DETAILS

E410