



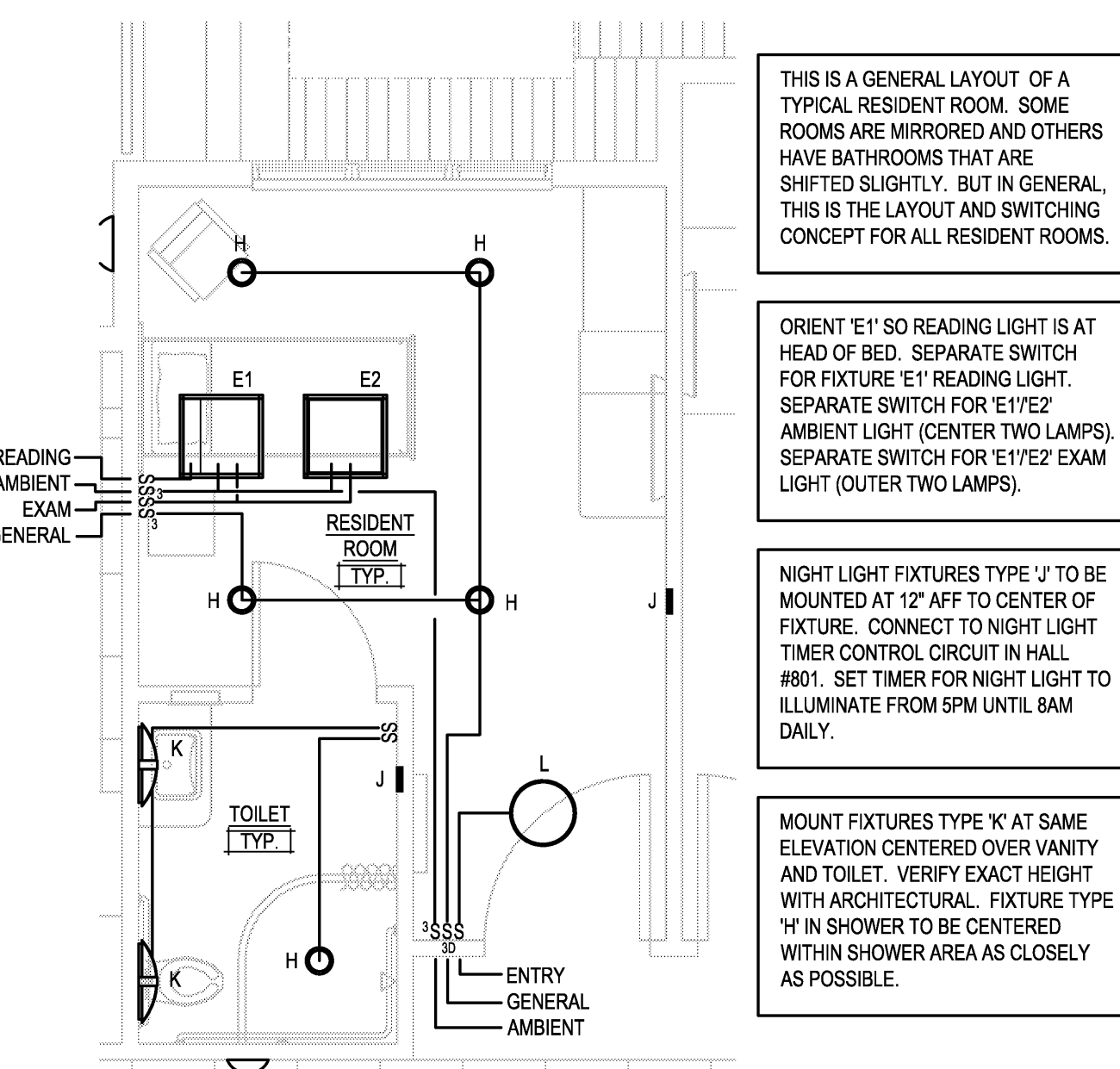
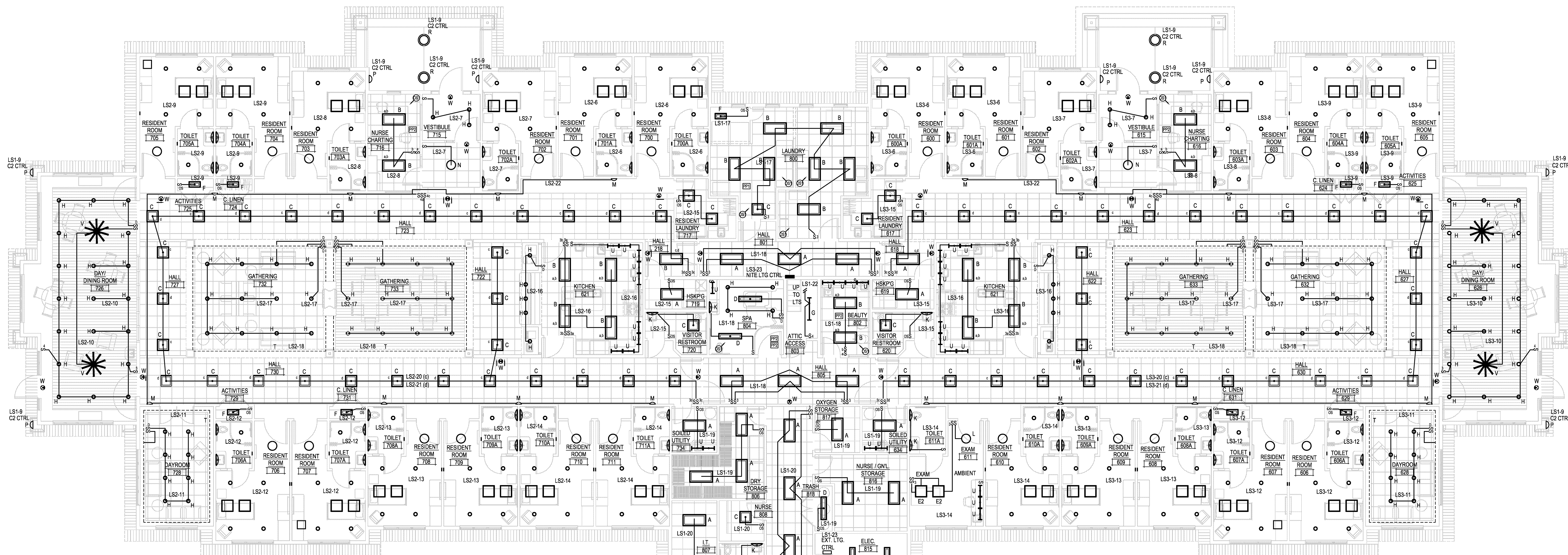
E2W ENGINEERING

161 East Michigan Ave
Suite 200
Kalamazoo, MI 49007
PHONE: (269) 373-8000
FAX: (269) 373-5641

This drawing, as an instrument of service, is owned by
E2W Engineering, LLC. Reproduction of this document
is prohibited without express authorization from the
engineer.
©2011 E2W Engineering, LLC

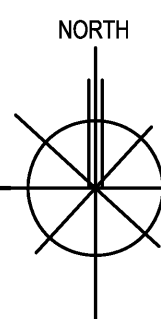
GENERAL NOTES

- IT IS UNDERSTOOD AND AGREED BY THE INSTALLER THAT WORK HEREIN DESCRIBED SHALL BE COMPLETE IN EVERY DETAIL, EVEN THOUGH EVERY ITEM INVOLVED IS NOT PARTICULARLY MENTIONED. INSTALLER SHALL BE HELD TO PROVIDE ALL LABOR AND MATERIALS NECESSARY FOR THE WORK INTENDED AND DESCRIBED FOR A COMPLETE AND OPERATIONAL SYSTEM. SUCH MATERIALS SHALL INCLUDE, BUT ARE NOT LIMITED TO, CONDUIT, FITTINGS, COVERPLATES, WIRING, BREAKERS, CONTROL DEVICES, LIGHTING ACCESSORIES, ETC. THIS ALSO INCLUDES EQUIPMENT REQUIRED BY STATE AND LOCAL CODES.
- CONTRACTOR IS RESPONSIBLE TO COORDINATE ALL EQUIPMENT AND MATERIALS WITH ALL OTHER TRADES.



1 LIGHTING PLAN

SCALE: 1/8"=1'-0"



LIGHTING NOTES

- ALL CIRCUITS 20A, 1P, CB UNLESS NOTED OTHERWISE.
- FIXTURE DESIGNATIONS ARE CAPITAL LETTERS BY EACH FIXTURE. LOWER CASE LETTERS DESIGNATE WHICH FIXTURES OR BALLASTS ARE CONNECTED TO WHICH RESPECTIVE SWITCH. DOUBLE SWITCHED FIXTURES ARE DESIGNATED AS a,b.
- LOCATE OS1 OCCUPANCY SENSORS IN CEILING AND AIM TO PROVIDE MAXIMUM COVERAGE OF ROOM. ADJUST SENSITIVITY TO AVOID FALSE TRIGGERING. LOCATE POWER PACKS ABOVE CEILINGS. IN ROOMS WITH HARD CEILINGS, LOCATE POWER PACKS ABOVE CEILING IN HALLWAY.
- FIXTURE TYPE "H" LED CAN REQUIRES A RECESSED JUNCTION BOX. SEE SPECIFICATIONS FOR APPROVED DIMMER SWITCHES FOR LED CANS.
- WALL MOUNT FIXTURE TYPE "P" ON EXTERIOR OF BUILDING AT 7'-0" ABOVE GRADE. CONNECT TO EXTERIOR LIGHTING CONTROL. SEE DETAIL SHEET.
- PENDANT MOUNT FIXTURE TYPE "R" SO BOTTOM OF FIXTURE IS AT 10'-0" AFF. COORDINATE WITH ARCHITECTURAL ELEVATIONS. CONNECT TO EXTERIOR LIGHTING CONTROL. SEE DETAIL SHEET.
- MOUNT UNDER CABINET FIXTURES CENTERED UNDER UPPER CABINET. UNDER CABINET LIGHTS CONTROLLED BY WALL SWITCH NEAR BASE CABINET AND ALSO CONTROLLED BY ROOM OCCUPANCY SENSOR.
- FIXTURE "T" TO BE INSTALLED IN ARCHITECTURAL COVE. PROVIDE QUANTITY OF FIXTURES FOR END TO END MOUNTING ALL THE WAY AROUND COVE. INSTALL DRIVERS ABOVE CEILINGS AS REQUIRED.
- EXIT SIGNS TO BE CONNECTED TO CORRIDOR LIGHTING CIRCUIT AHEAD OF SWITCHES. INSTALL SIGNS CENTERED OVER DOORS OR AT 7'-6" AFF WHERE NOT OVER DOORWAYS.
- CEILING FANS TYPE "V" BY E.C. INSTALL AND CONNECT PER MANUFACTURERS INSTALLATION INSTRUCTIONS. FAN SWITCHES TO BE OBTAINED FROM MANUFACTURER AND ONE SWITCH TO BE ABLE TO CONTROL TWO FANS.
- NIGHT LIGHTS CONTROLLED BY TIME CLOCK CONTROLLER LOCATED IN HALL #801. SEE DETAIL SHEET FOR MORE INFORMATION.
- REFER TO ARCHITECTURAL INTERIOR ELEVATIONS FOR HEIGHTS OF INTERIOR WALL MOUNTED FIXTURES.

2 ENLARGED TYP. RESIDENT ROOM LIGHTING PLAN

SCALE: 1/4"=1'-0"

THE COTTAGE at THORNAPPLE

Hastings, MI

PROJ. NO.: 2011-11-021

02/21/12 ISSUED FOR BIDS

CONSTRUCTION MANAGER
CM CONTRACTING
CIVIL ENGINEER
HURLEY & STEWART
STRUCTURAL ENGINEER
JDH ENGINEERING
MECH ENGINEER
E2W ENGINEERING
FOOD SERVICE CONSULTANT
MILLIS & ASSOCIATES



ECKERT WORDELL
ARCHITECTURE • ENGINEERING • INTERIOR DESIGN

161 East Michigan Ave, Suite 200
Kalamazoo, MI 49007-3907
PHONE: 269.388.7313
FAX: 269.388.7330
WEB: www.eckert-wordell.com

© 2011 Eckert Wordell, LLC

LIGHTING PLAN

E210