



E2W ENGINEERING

161 East Michigan Ave
Suite 200
Kalamazoo, MI 49007
PHONE: (269) 373-8000
FAX: (269) 373-5641

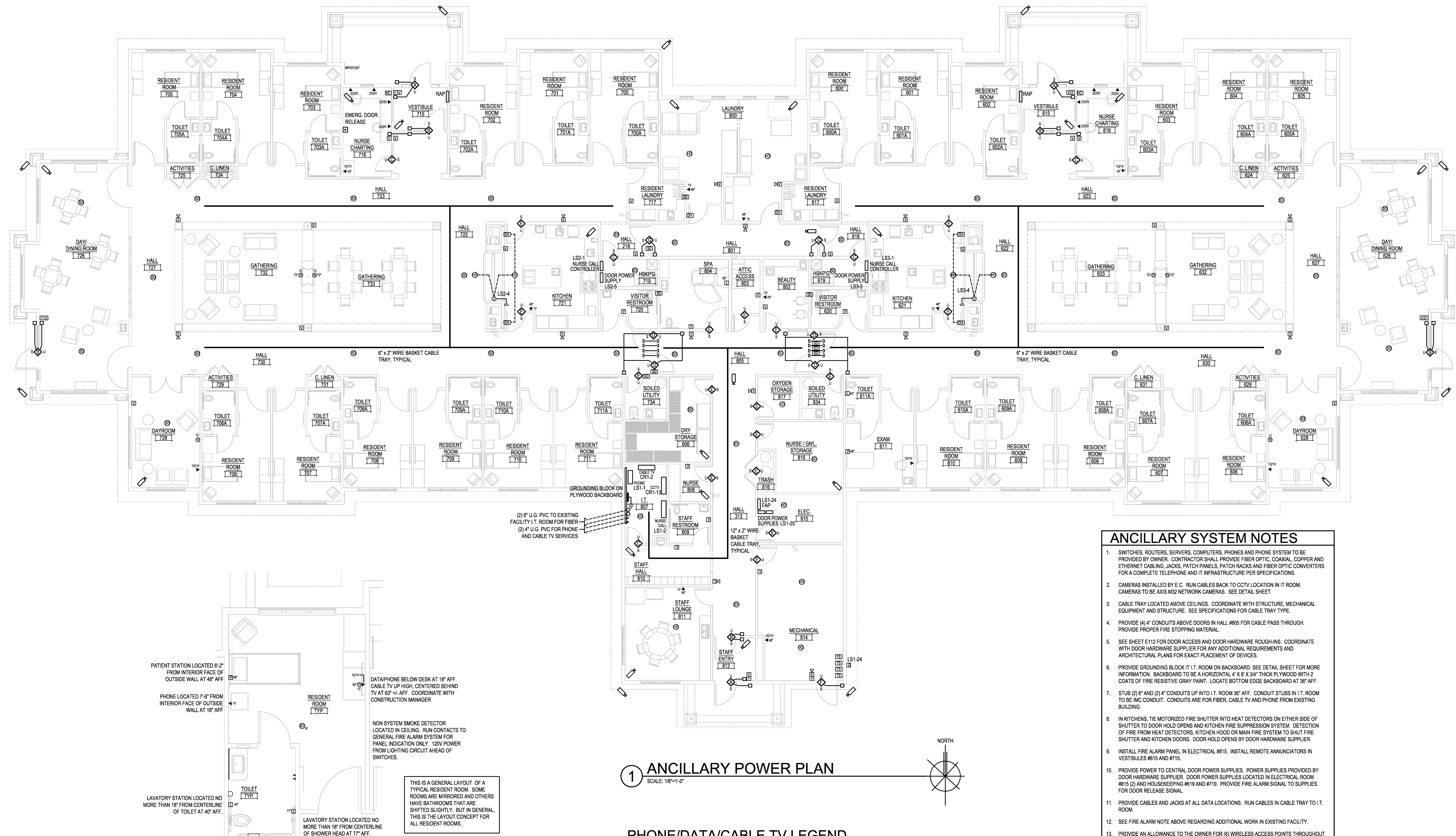
This drawing, as an instrument of service, is owned by
E2W Engineering, LLC. Reproduction of this document
is prohibited without express authorization from the
engineer.
©2011 E2W Engineering, LLC

GENERAL NOTES

- IT IS UNDERSTOOD AND AGREED BY THE INSTALLER THAT WORK HEREIN DESCRIBED SHALL BE COMPLETE IN EVERY DETAIL. EVEN THOUGH EVERY ITEM INVOLVED IS NOT PARTICULARLY MENTIONED. INSTALLER SHALL BE HELD TO PROVIDE ALL LABOR AND MATERIALS NECESSARY FOR THE WORK INTENDED AND DESCRIBED FOR A COMPLETE AND OPERATIONAL SYSTEM. SUCH MATERIALS SHALL INCLUDE, BUT ARE NOT LIMITED TO, CONDUIT, FITTINGS, COVERPLATES, WIRING, BREAKERS, CONTROL DEVICES, LIGHTING ACCESSORIES, ETC. THIS ALSO INCLUDES EQUIPMENT REQUIRED BY STATE AND LOCAL CODES.
- CONTRACTOR IS RESPONSIBLE TO COORDINATE ALL EQUIPMENT AND MATERIALS WITH ALL OTHER TRADES.

FIRE ALARM NOTE

- IN THE EXISTING FACILITY, ALL FIRE ALARM NOTIFICATION APPLIANCES IN THE RESIDENT TOILET ROOMS AND SLEEPING ROOMS ARE TO BE REMOVED. THIS WORK IS TO BE DONE PRIOR TO NEW CONSTRUCTION OF THE COTTAGE. WORK IS TO BE DONE BY A QUALIFIED FIRE ALARM INSTALLER. TURN OVER REMOVED APPLIANCES TO OWNER FOR SPARE STOCK. PROVIDE BLANK PLASTIC COVERPLATE (ALUMINUM) OVER EXISTING BACK-BOX. FIRE ALARM SYSTEM TO BE RETURNED TO A WORKING AND OPERATIONAL STATE UPON COMPLETION OF WORK. FIELD VERIFY QUANTITIES OF DEVICES TO BE REMOVED.



ANCILLARY SYSTEM NOTES

- SWITCHES, ROUTERS, SERVERS, COMPUTERS, PHONES AND PHONE SYSTEM TO BE PROVIDED BY OWNER. CONTRACTOR SHALL PROVIDE FIBER OPTIC, COAXIAL, COPPER AND ETHERNET CABLES, JACKS, PATCH PANELS, PATCH RACKS AND FIBER OPTIC CONVERTERS FOR A COMPLETE TELEPHONE AND IT INFRASTRUCTURE PER SPECIFICATIONS.
- CAMERAS INSTALLED BY E.C. RUN CABLES BACK TO CCTV LOCATION IN IT ROOM. CAMERAS TO BE AXIS M2 NETWORK CAMERAS. SEE DETAIL SHEET.
- CABLE TRAY LOCATED ABOVE CEILINGS. COORDINATE WITH STRUCTURE, MECHANICAL EQUIPMENT AND STRUCTURE. SEE SPECIFICATIONS FOR CABLE TRAY TYPE.
- PROVIDE (4) 1" CONDUITS ABOVE DOORS IN HALL #805 FOR CABLE PASS THROUGH. PROVIDE PROPER FIRE STOPPING MATERIAL.
- SEE SHEET E112 FOR DOOR ACCESS AND DOOR HARDWARE ROUGHINS. COORDINATE WITH DOOR HARDWARE SUPPLIER FOR ANY ADDITIONAL REQUIREMENTS AND ARCHITECTURAL PLANS FOR EXACT PLACEMENT OF DEVICES.
- PROVIDE GROUNDING BLOCK IT I.T. ROOM ON BACKBOARD. SEE DETAIL SHEET FOR MORE INFORMATION. BACKBOARD TO BE A HORIZONTAL 4" X 8" X 3/4" THICK PLYWOOD WITH 2 COATS OF FIRE RESISTIVE GRAY PAINT. LOCATE BOTTOM EDGE BACKBOARD AT 36" AFF.
- STUB (2) 6" AND (2) 4" CONDUITS UP INTO I.T. ROOM 36" AFF. CONDUIT STUBS IN I.T. ROOM TO BE IMC CONDUIT. CONDUITS ARE FOR FIBER, CABLE TV AND PHONE FROM EXISTING BUILDING.
- IN KITCHENS, TIE MOTORIZED FIRE SHUTTER INTO HEAT DETECTORS ON EITHER SIDE OF SHUTTER TO DOOR HOLD OPENS AND KITCHEN FIRE SUPPRESSION SYSTEM. DETECTION OF FIRE FROM HEAT DETECTORS, KITCHEN HOOD OR MAIN FIRE SYSTEM TO SHUT FIRE SHUTTER AND KITCHEN DOORS. DOOR HOLD OPENS BY DOOR HARDWARE SUPPLIER.
- INSTALL FIRE ALARM PANEL IN ELECTRICAL #815. INSTALL REMOTE ANNUNCIATORS IN VESTIBULES #615 AND #715.
- PROVIDE POWER TO CENTRAL DOOR POWER SUPPLIES. POWER SUPPLIES PROVIDED BY DOOR HARDWARE SUPPLIER. DOOR POWER SUPPLIES LOCATED IN ELECTRICAL ROOM #815 (2) AND HOUSEKEEPING #819 AND #719. PROVIDE FIRE ALARM SIGNAL TO SUPPLIES FOR DOOR RELEASE SIGNAL.
- PROVIDE CABLES AND JACKS AT ALL DATA LOCATIONS. RUN CABLES IN CABLE TRAY TO I.T. ROOM.
- SEE FIRE ALARM NOTE ABOVE REGARDING ADDITIONAL WORK IN EXISTING FACILITY.
- PROVIDE AN ALLOWANCE TO THE OWNER FOR (8) WIRELESS ACCESS POINTS THROUGHOUT THE COTTAGE.
- RUN FIBER OPTIC CABLE FROM I.T. ROOM OF COTTAGE TO I.T. ROOM OF EXISTING FACILITY. SEE SITE PLAN AND COORDINATE WITH OWNER COMPLETE CONDUIT ROUTING.
- PROVIDE EMERGENCY DOOR RELEASE IN NURSE CHARTING #716 TO MANUALLY RELEASE ALL DOORS UPON ACTIVATION. TIE INTO CENTRAL DOOR POWER SUPPLIES. COORDINATE WITH DOOR HARDWARE SUPPLIER.
- AT ALL WIRELESS NURSE CALL DEVICE LOCATIONS, PROVIDE PLASTIC MUD RING FOR DEVICE. COORDINATE MUD RING REQUIREMENT WITH NURSE CALL SUPPLIER. NURSE CALL DEVICES SUPPLIED BY NURSE CALL SUPPLIER AND INSTALLED BY E.C. BATTERIES SUPPLIED BY NURSE CALL SUPPLIER. PROVIDE POWER TO CONTROLLERS.
- PROVIDE 120V POWER TO SMOKE DAMPERS. COORDINATE WITH M.C.

1 ANCILLARY POWER PLAN

SCALE: 1/8"=1'-0"

PHONE/DATA/CABLE TV LEGEND

- ▲ TYPE OF CABLES
NUMBER OF EACH TYPE OF CABLES:
- D = DATA (ETHERNET)
V = VOICE (TELEPHONE)
C = CABLE TV (COAX)

2 ENLARGED TYP. RESIDENT ROOM POWER PLAN

SCALE: 1/4"=1'-0"

PATIENT STATION LOCATED 6'-2"
FROM INTERIOR FACE OF
OUTSIDE WALL AT 46" AFF.

PHONE LOCATED 7'-6" FROM
INTERIOR FACE OF OUTSIDE
WALL AT 18" AFF.

LAVATORY STATION LOCATED NO
MORE THAN 18" FROM CENTERLINE
OF TOILET AT 40" AFF.

DATA/PHONE BELOW DESK AT 18" AFF.
CABLE TV UP HIGH, CENTERED BEHIND
TV AT 63" +/- AFF. COORDINATE WITH
CONSTRUCTION MANAGER

NON SYSTEM SMOKE DETECTOR
LOCATED IN CEILING. RUN CONTACTS TO
GENERAL FIRE ALARM SYSTEM FOR
PANEL INDICATION ONLY. 120V POWER
FROM LIGHTING CIRCUIT AHEAD OF
SWITCHES.

THIS IS A GENERAL LAYOUT OF A
TYPICAL RESIDENT ROOM. SOME
ROOMS ARE MIRRORRED AND OTHERS
HAVE BATHROOMS THAT ARE
SHIFTED SLIGHTLY. BUT IN GENERAL,
THIS IS THE LAYOUT CONCEPT FOR
ALL RESIDENT ROOMS.

THE COTTAGE at THORNAPPLE

Hastings, MI

PROJ. NO.: 2011-11-021

02/21/12 ISSUED FOR BIDS

CONSTRUCTION MANAGER

CM CONTRACTING

CIVIL ENGINEER

HURLEY & STEWART

STRUCTURAL ENGINEER

JDH ENGINEERING

M.E.P. ENGINEER

E2W ENGINEERING

FOOD SERVICE CONSULTANT

MILLIS & ASSOCIATES

ARCHITECTURE • ENGINEERING • INTERIOR DESIGN

161 East Michigan Ave., Suite 200

Kalamazoo, MI 49007-3907

PHONE: 269.388.7313

FAX: 269.388.7330

WEB: www.eckert-wordell.com

© 2011 Eckert Wordell, LLC

ANCILLARY POWER PLAN

E111