

GENERAL NOTES

- A. IT IS UNDERSTOOD AND AGREED BY THE INSTALLER THAT WORK HEREIN DESCRIBED SHALL BE COMPLETE IN EVERY DETAIL EVEN THOUGH EVERY ITEM INVOLVED IS NOT PARTICULARLY MENTIONED. INSTALLER SHALL BE HELD TO PROVIDE ALL LABOR AND MATERIALS NECESSARY FOR THE WORK INTENDED AND DESCRIBED FOR A COMPLETE AND OPERATIONAL SYSTEM. SUCH MATERIALS SHALL INCLUDE, BUT ARE NOT LIMITED TO, CONDUIT, FITTINGS, COVERPLATES, WIRING, BREAKERS, CONTROL DEVICES, LIGHTING ACCESSORIES, ETC. THIS ALSO INCLUDES EQUIPMENT REQUIRED BY STATE AND LOCAL CODES.
- B. CONTRACTOR IS RESPONSIBLE TO COORDINATE ALL EQUIPMENT AND MATERIALS WITH ALL OTHER TRADES.



E2W ENGINEERING

161 East Michigan Ave  
Suite 200  
Kalamazoo, MI 49007  
PHONE: (269) 373-8000  
FAX: (269) 373-5641

This drawing, as an instrument of service, is owned by E2W Engineering, LLC. Reproduction of this document is prohibited without express authorization from the engineer.  
©2011 E2W Engineering, LLC

THE COTTAGE at THORNAPPLE

Hastings, MI

PROJ. NO.: 2011-11-021

02/21/12 ISSUED FOR BIDS

CONSTRUCTION MANAGER  
CM CONTRACTING  
CIVIL ENGINEER  
HURLEY & STEWART  
STRUCTURAL ENGINEER  
JDH ENGINEERING  
MEEP ENGINEER  
E2W ENGINEERING  
FOOD SERVICE CONSULTANT  
MILLIS & ASSOCIATES



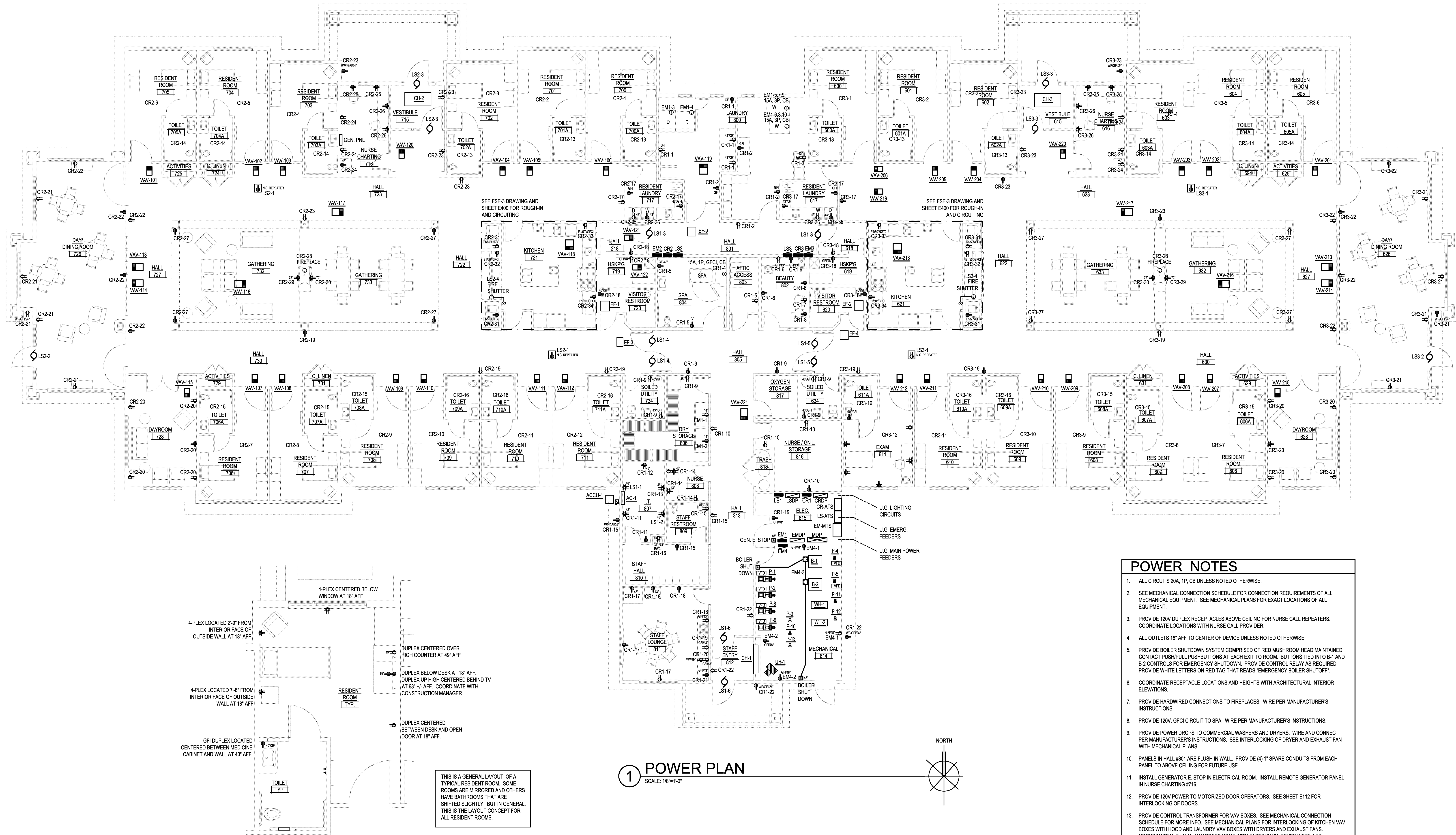
ECKERT WORDELL  
ARCHITECTURE • ENGINEERING • INTERIOR DESIGN

161 East Michigan Ave., Suite 200  
Kalamazoo, MI 49007-3907  
PHONE: 269.388.7313  
FAX: 269.388.7330  
WEB: www.eckert-wordell.com

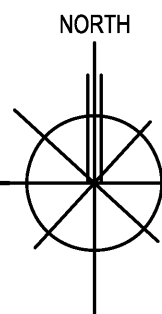
© 2011 Eckert Wordell, LLC

POWER PLAN

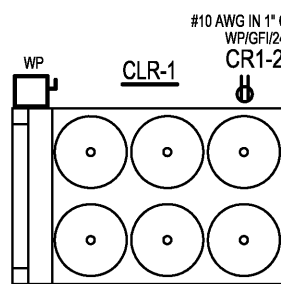
E110



1 POWER PLAN  
SCALE: 1/8"=1'-0"



CHILLER LOCATED ACROSS  
DRIVE. COORDINATE WITH  
MECHANICAL CONTRACTOR.  
SEE SHEET E100.



POWER NOTES

- ALL CIRCUITS 20A, 1P, CB UNLESS NOTED OTHERWISE.
- SEE MECHANICAL CONNECTION SCHEDULE FOR CONNECTION REQUIREMENTS OF ALL MECHANICAL EQUIPMENT. SEE MECHANICAL PLANS FOR EXACT LOCATIONS OF ALL EQUIPMENT.
- PROVIDE 120V DUPLEX RECEPTABLES ABOVE CEILING FOR NURSE CALL REPEATERS. COORDINATE LOCATIONS WITH NURSE CALL PROVIDER.
- ALL OUTLETS 18" AFF TO CENTER OF DEVICE UNLESS NOTED OTHERWISE.
- PROVIDE BOILER SHUTDOWN SYSTEM COMPRISED OF RED MUSHROOM HEAD MAINTAINED CONTACT PUSH/PULL PUSHBUTTONS AT EACH EXIT TO ROOM. BUTTONS TIED INTO B-1 AND B-2 CONTROLS FOR EMERGENCY SHUTDOWN. PROVIDE CONTROL RELAY AS REQUIRED. PROVIDE WHITE LETTERS ON RED TAG THAT READS "EMERGENCY BOILER SHUTOFF".
- COORDINATE RECEPTACLE LOCATIONS AND HEIGHTS WITH ARCHITECTURAL INTERIOR ELEVATIONS.
- PROVIDE HARDWIRED CONNECTIONS TO FIREPLACES. WIRE PER MANUFACTURER'S INSTRUCTIONS.
- PROVIDE 120V, GFCI CIRCUIT TO SPA. WIRE PER MANUFACTURER'S INSTRUCTIONS.
- PROVIDE POWER DROPS TO COMMERCIAL WASHERS AND DRYERS. WIRE AND CONNECT PER MANUFACTURER'S INSTRUCTIONS. SEE INTERLOCKING OF DRYER AND EXHAUST FAN WITH MECHANICAL PLANS.
- PANELS IN HALL #801 ARE FLUSH IN WALL. PROVIDE (4) 1" SPARE CONDUITS FROM EACH PANEL TO ABOVE CEILING FOR FUTURE USE.
- INSTALL GENERATOR E. STOP IN ELECTRICAL ROOM. INSTALL REMOTE GENERATOR PANEL IN NURSE CHARTING #716.
- PROVIDE 120V POWER TO MOTORIZED DOOR OPERATORS. SEE SHEET E112 FOR INTERLOCKING OF DOORS.
- PROVIDE CONTROL TRANSFORMER FOR VAV BOXES. SEE MECHANICAL CONNECTION SCHEDULE FOR MORE INFO. SEE MECHANICAL PLANS FOR INTERLOCKING OF KITCHEN VAV BOXES WITH HOOD AND LAUNDRY VAV BOXES WITH DRYERS AND EXHAUST FANS. COORDINATE WITH M.C. VAV BOXES COME WITH FACTORY SWITCHES INSTALLED.