

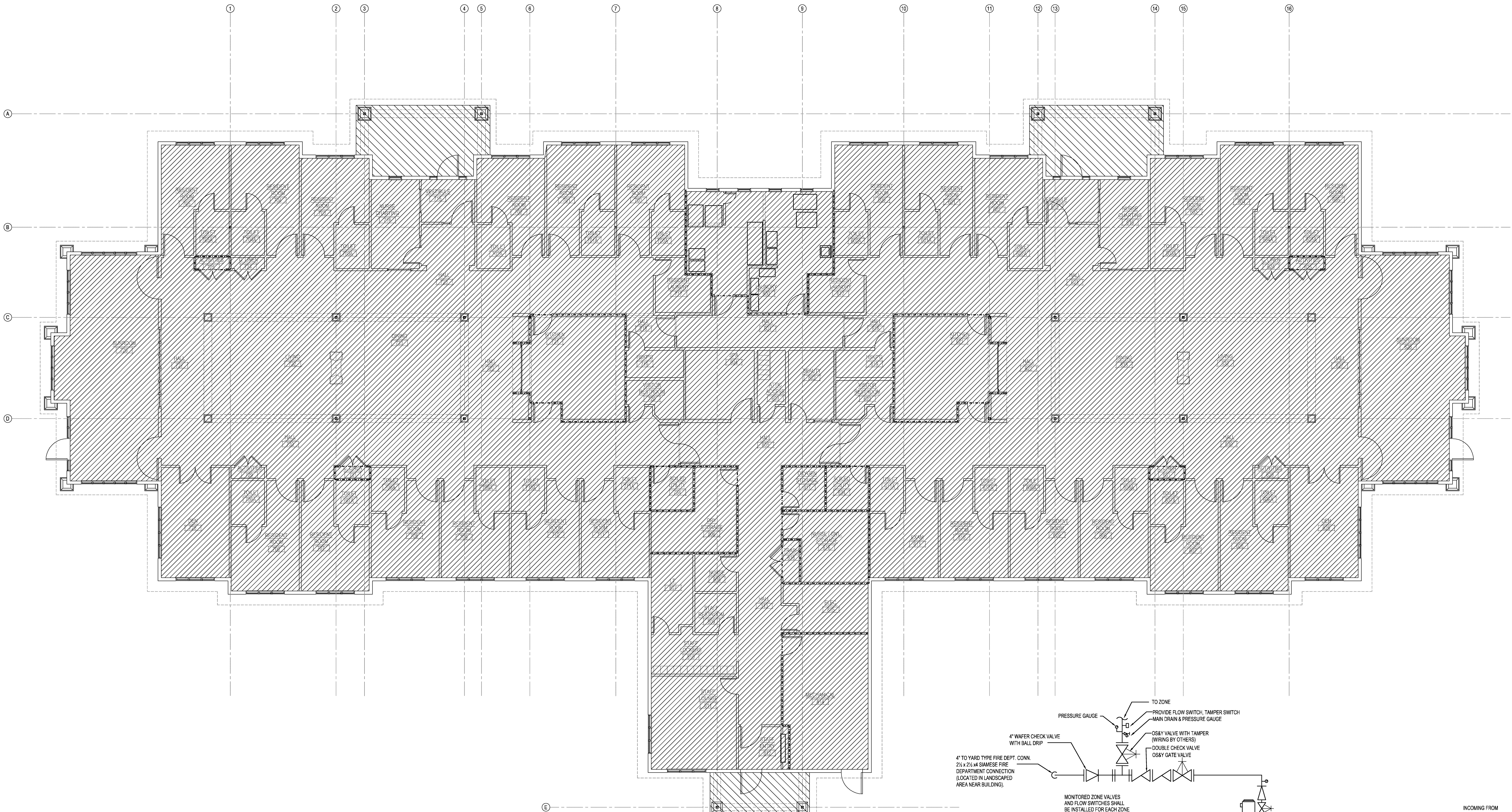
FIRE PROTECTION NOTES

1. FIRE PROTECTION CONTRACTOR TO PROVIDE A COMPLETELY SPRINKLED BUILDING (LIGHT HAZARD). DESIGN FIRE PROTECTION SYSTEMS PER NFPA #13R, STATE FIRE MARSHALL AND REQUIREMENTS PER CITY CODE. SYSTEM HYDRAULIC DESIGN MINIMUM IS 15 GALLONS PER MINUTE FROM FOUR MOST REMOTE SPRINKLERS IN A COMPARTMENT AND ANY SINGLE SPRINKLER CAPABLE OF PROVIDING 18 GALLONS PER MINUTE.
2. BUILDING TO BE PROTECTED WITH A WET SYSTEM. (CANOPIES & ATTIC TO BE PROTECTED WITH A DRY SYSTEM). THIS INCLUDES ALL REQUIRED STANDPIPES, FIRE PUMPS, STORAGE TANK, FIRE DEPARTMENT CONNECTIONS, AND WATER MAIN.
3. SPRINKLER HEADS SHALL BE QUICK RESPONSE IN LIGHT HAZARD AREAS.
4. ALL SPRINKLER HEADS IN FINISHED AREAS TO BE CONCEALED WITH WHITE COVER PLATES, 155° 1/2" ORIFICE.
5. HEADS TO BE CENTERED IN AREAS WITH ACOUSTICAL CEILING TILES.
6. EXPOSED AREAS TO HAVE BRASS UPRIGHT HEADS.
7. COORDINATE FIRE DEPARTMENT CONNECTION WITH THE CITY OF HASTINGS.
8. EXISTING CONDITIONS TO BE FIELD VERIFIED.
9. COORDINATE FIRE PROTECTION LINES WITH LIGHTS, DUCTS, CEILING GRIDS, BULKHEADS, ETC.
10. COORDINATE FIRE PROTECTION REQUIREMENTS WITH OWNERS INSURANCE COMPANY.
11. FIRE PUMP AND STORAGE TANK TO BE SIZED PER NFPA. EXISTING WELL TO BE UTILIZED.

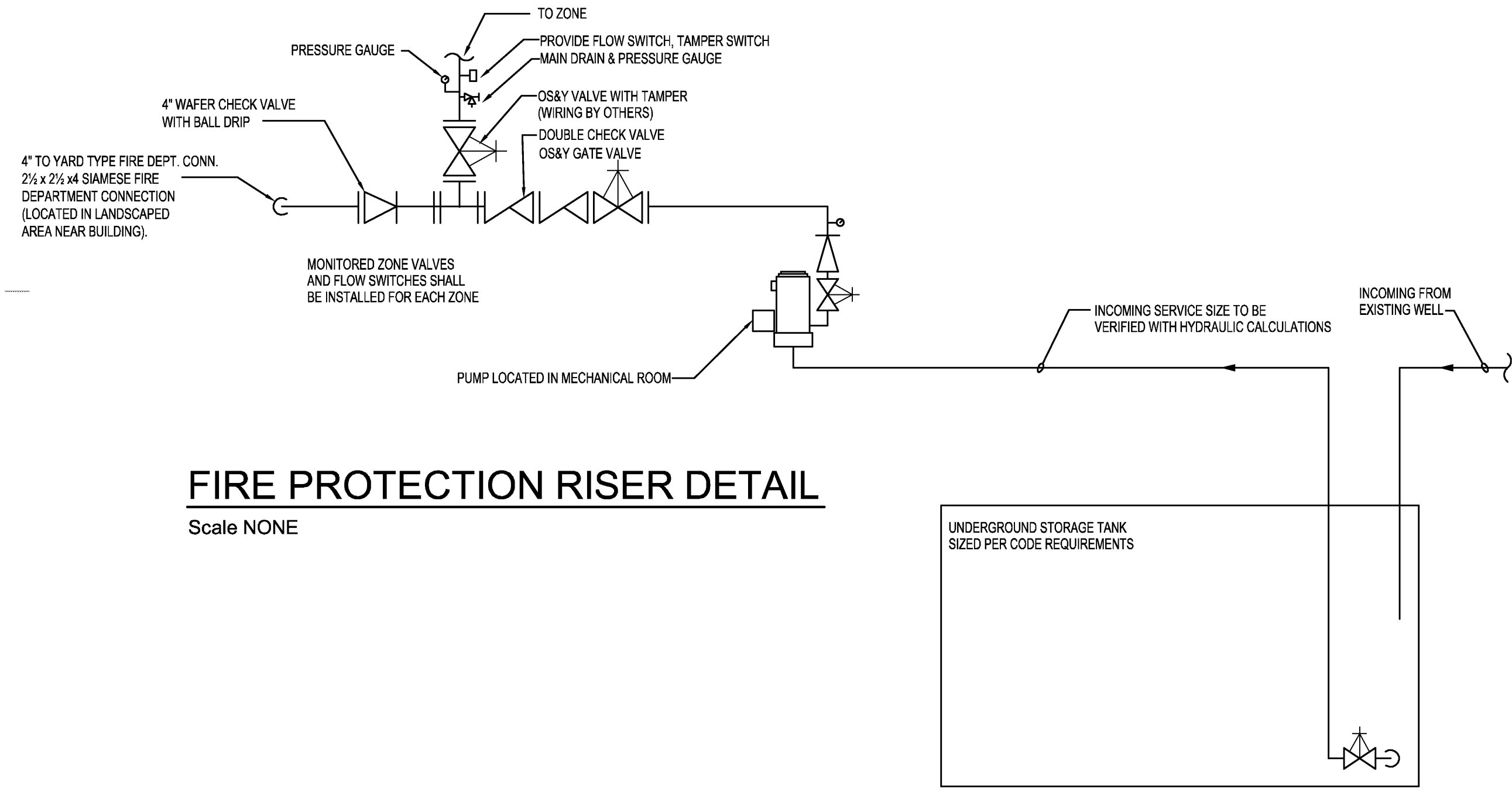
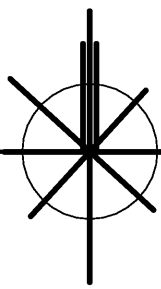


E2W ENGINEERING
161 East Michigan Ave
Suite 200
Kalamazoo, MI 49007
PHONE: (269) 373-8000
FAX: (269) 373-5641

This drawing, as an instrument of service, is owned by E2W Engineering, LLC. Reproduction of this document is prohibited without express authorization from the engineer.
©2011 E2W Engineering, LLC



1 FIRE PROTECTION PLAN
SCALE: 1/8"=1'-0"



FIRE PROTECTION RISER DETAIL
Scale NONE

THE COTTAGE at THORNAPPLE
Hastings, MI

PROJ. NO.: 2011-11-021

02/2/12 ISSUED FOR BIDS

CONSTRUCTION MANAGER
CM CONTRACTING

CIVIL ENGINEER
HURLEY & STEWART

STRUCTURAL ENGINEER
JDH ENGINEERING

MECHANICAL ENGINEER
E2W ENGINEERING

2000-SERVICE CONSULTANT
MILLIS & ASSOCIATES



ECKERT WORDELL
ARCHITECTURE • ENGINEERING • INTERIOR DESIGN

161 East Michigan Ave, Suite 200
Kalamazoo, MI 49007-3907
PHONE: 269-388-7313
FAX: 269-388-7300
WEB: www.eckert-wordell.com

© 2011 Eckert Wordell, LLC

FIRE PROTECTION PLAN

FP110