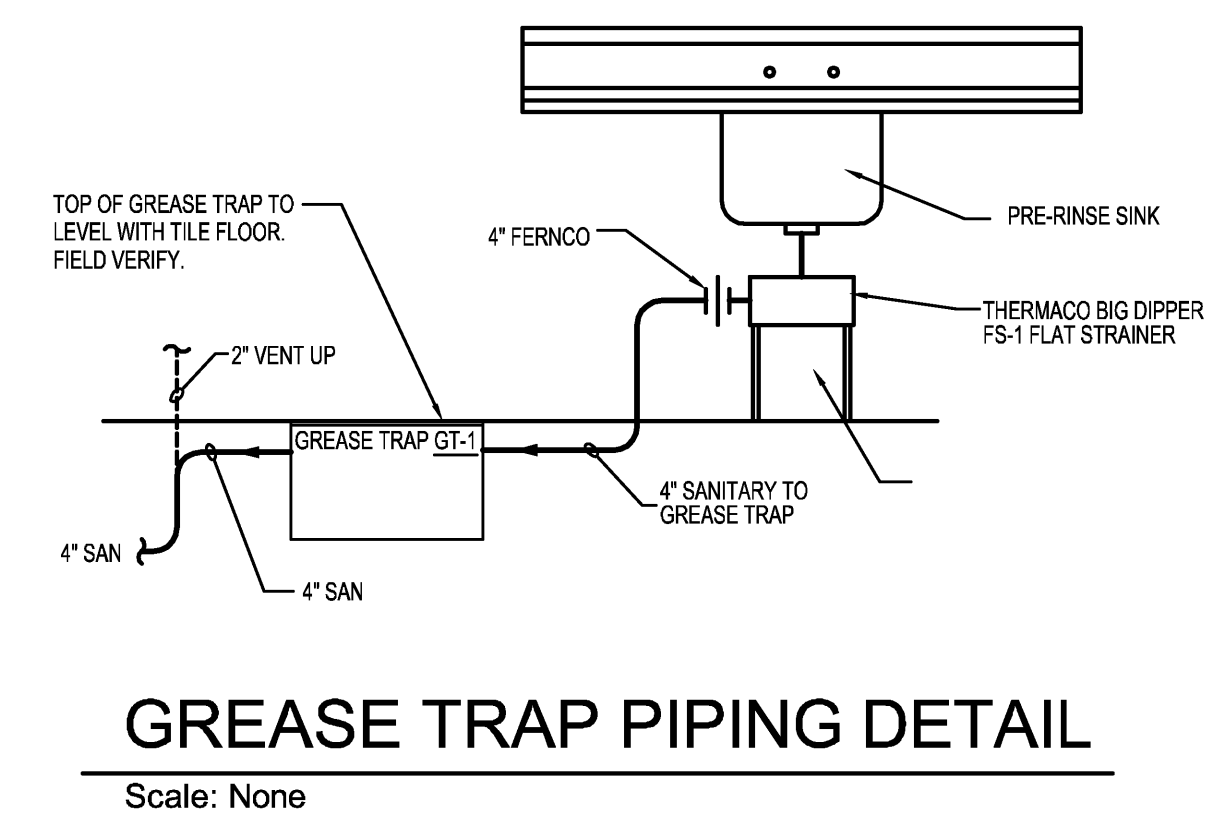
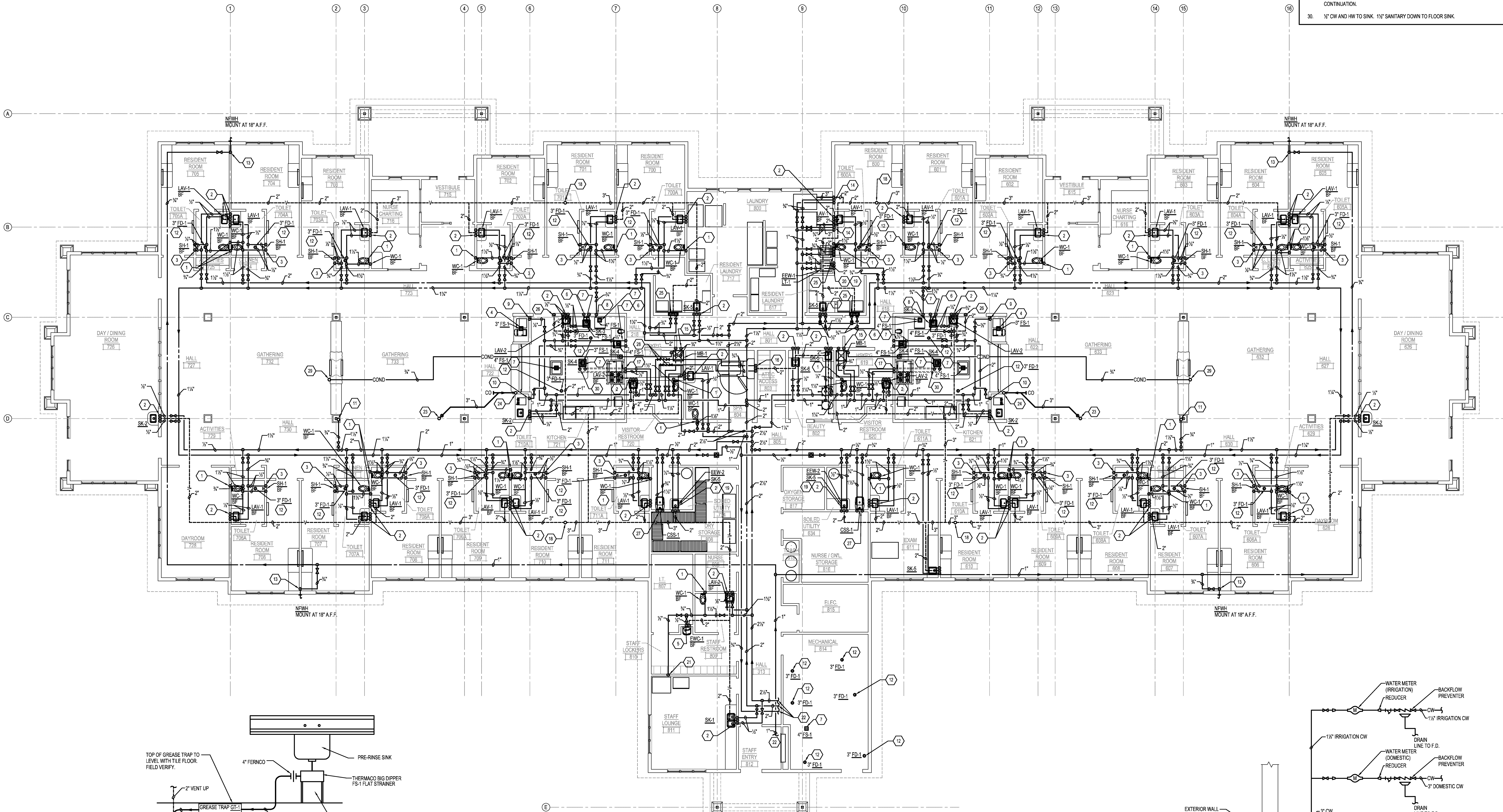


NOTES	NOTES
1. 1/2" CW TO WATER CLOSET. 4" SANITARY DOWN. REFER TO SHEET P100 FOR CONTINUATION.	15. 1/2" CW AND HW DOWN TO MOP BASIN. 3" SANITARY DOWN. REFER TO SHEET P100 FOR CONTINUATION.
2. 1/2" CW AND HW TO LAVATORY/SINK. 2" SANITARY DOWN AND 2" VENT UP. REFER TO SHEET P100 FOR CONTINUATION.	16. 1/2" CW AND HW TO SIT IN TUB. 3" SANITARY DOWN. 2" VENT UP. REFER TO SHEET P100 FOR CONTINUATION. COORDINATE LOCATION WITH EQUIPMENT SUPPLIER.
3. 1/2" CW AND HW TO SHOWER.	17. PROVIDE 4" PVC SLEEVE OVER TO BELOW SINK. USE LONG SWEEP 80'S. 1/2" CW AND HW DOWN IN SLEEVE.
4. 3" SANITARY DOWN FROM FLOOR SINK. REFER TO SHEET P100 FOR CONTINUATION.	18. 3" VENT UP. 4" VENT THROUGH ROOF.
5. 1/2" CW DOWN TO ELECTRIC WATER COOLER. 2" SANITARY DOWN AND 2" VENT UP. REFER TO SHEET P100 FOR CONTINUATION.	19. 1/2" CW AND HW TO THERMOSTATIC MIXING VALVE FOR EMERGENCY EYE WASH AT SINK. COORDINATE LOCATION WITH EQUIPMENT.
6. 1/2" HW & CW TO SINK. 1 1/2" WASTE TO FLOOR SINK. COORDINATE LOCATION WITH FOOD SERVICE EQUIPMENT.	20. 1/2" CW AND HW DOWN TO LAUNDRY TUB. 3" SANITARY DOWN. 2" VENT UP. REFER TO SHEET P100 FOR CONTINUATION.
7. 4" SANITARY DOWN FROM FLOOR SINK. REFER TO SHEET P100 FOR CONTINUATION.	21. 1/2" CW TO WALL BOX BEHIND REFRIGERATOR. PROVIDE WHITE POWDER COATED BOX. COORDINATE LOCATION WITH EQUIPMENT.
8. 1/2" HW TO DISH MACHINE. 1/2" WASTE TO FLOOR SINK. COORDINATE LOCATION WITH FOOD SERVICE EQUIPMENT.	22. REFER TO ENLARGED MECHANICAL ROOM PLAN ON SHEET M300 FOR CONTINUATION.
9. 1/2" CW DOWN TO FILTER BELOW COUNTER. RUN 1/2" CW TO JUICE MACHINE AND ICE / WATER DISPENSER. COORDINATE CONNECTION WITH FOOD SERVICE EQUIPMENT SUPPLIER.	23. 3" SANITARY DOWN FROM FLOOR DRAIN. REFER TO SHEET M200 FOR CONTINUATION.
10. 1/2" CW DOWN TO FILTER BELOW COUNTER. RUN 1/2" CW TO COFFEE BREWER. COORDINATE LOCATION WITH FOOD SERVICE EQUIPMENT.	24. 3" SANITARY DOWN. 3" VENT UP. 4" VENT THROUGH ROOF. REFER TO SHEET P100 FOR AND M200 FOR CONTINUATION.
11. 1/2" CW UP. REFER TO SHEET M200 FOR CONTINUATION.	25. 1/2" HW AND CW DOWN TO LAUNDRY BOX. 3" SANITARY DOWN. 2" VENT UP. REFER TO SHEET P100 FOR CONTINUATION.
12. 3" SANITARY DOWN FROM FLOOR DRAIN. REFER TO SHEET P100 FOR CONTINUATION.	26. 2" VENT UP FROM BELOW. REFER TO SHEET P100 FOR CONTINUATION.
13. 1/2" CW DOWN TO NPHW.	27. 1 1/2" CW AND 1/2" HW DOWN TO CLINICAL SERVICE SINK. 4" SANITARY DOWN. REFER TO SHEET P100 FOR CONTINUATION.
14. 1/2" CW TO WASHING MACHINE. 3" SANITARY DOWN AND 2" VENT UP. REFER TO SHEET P100 FOR CONTINUATION. COORDINATE CONNECTIONS WITH EQUIPMENT.	28. PROVIDE 1/2" REDUCED PRESSURE PRINCIPLE BACKFLOW PREVENTER ON HW AND CW LINE FEEDING SIT IN TUB. ROUTE DRAINS OVER TO MOP BASIN.
	29. 1/2" CONDENSATE FROM HUMIDIFIER ABOVE. ROUTE TO MOP BASIN. REFER TO SHEET M200 FOR CONTINUATION.
	30. 1/2" CW AND HW TO SINK. 1 1/2" SANITARY DOWN TO FLOOR SINK.



1 PLUMBING PLAN
SCALE: 1/8"=1'-0"

