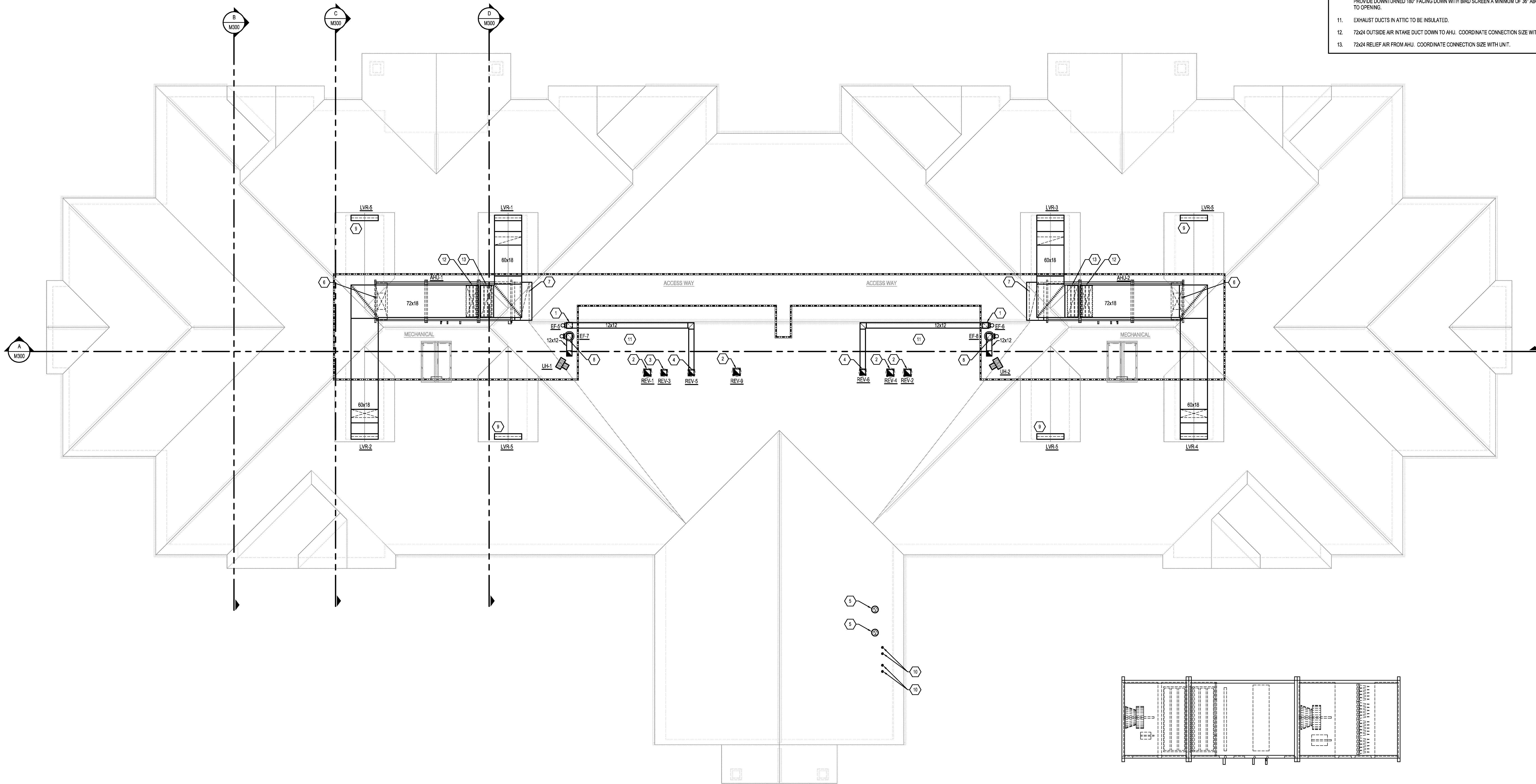
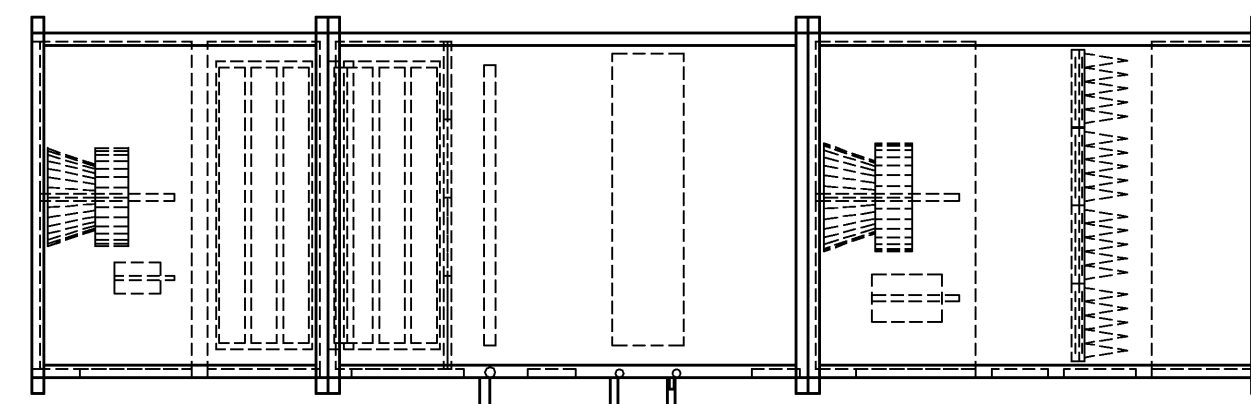


## NOTES

- 12x12 EXHAUST DUCT FROM BELOW. REFER TO SHEET M110 FOR CONTINUATION. COORDINATE LOCATION WITH STRUCTURAL.
- 14x14 EXHAUST DUCT UP FROM BELOW TO ROOF EXHAUST VENT. REFER TO SHEET M110 FOR CONTINUATION. COORDINATE LOCATION WITH STRUCTURAL.
- 12x12 EXHAUST DUCT UP FROM BELOW TO ROOF EXHAUST VENT. REFER TO SHEET M110 FOR CONTINUATION. COORDINATE LOCATION WITH STRUCTURAL.
- 12x12 EXHAUST DUCT UP TO ROOF EXHAUST VENT. COORDINATE LOCATION WITH STRUCTURAL.
- 6" BOILER VENT UP. REFER TO SHEET M110 FOR CONTINUATION. TERMINATE ABOVE ROOF WITH VENT CAP PER MANUFACTURER'S RECOMMENDATIONS.
- 36x18 SUPPLY DUCT DOWN. REFER TO SHEET M110 FOR CONTINUATION. COORDINATE LOCATION WITH STRUCTURAL.
- 84x20 RETURN DUCT FROM BELOW. REFER TO SHEET M110 FOR CONTINUATION. COORDINATE LOCATION WITH STRUCTURAL.
- 12x12 KITCHEN HOOD EXHAUST DUCT FROM BELOW. REFER TO SHEET M110 FOR CONTINUATION AND KITCHEN HOOD EXHAUST DETAIL. COORDINATE LOCATION WITH STRUCTURAL.
- PROVIDE WITH INSULATED BLANK-OFF PANEL.
- 4" WATER HEATER VENT AND INTAKE UP. REFER TO SHEET M110 FOR CONTINUATION. PROVIDE FLUE TERMINATION A MINIMUM OF 36" ABOVE ROOF PER MANUFACTURER'S RECOMMENDATIONS. PROVIDE INTAKE TERMINATION ABOVE ROOF PER MANUFACTURER'S RECOMMENDATIONS. PROVIDE DOWNTURNED 180° FACING DOWN WITH BIRD SCREEN A MINIMUM OF 36" ABOVE ROOF TO OPENING.
- EXHAUST DUCTS IN ATTIC TO BE INSULATED.
- 72x24 OUTSIDE AIR INTAKE DUCT DOWN TO AHU. COORDINATE CONNECTION SIZE WITH UNIT.
- 72x24 RELIEF AIR FROM AHU. COORDINATE CONNECTION SIZE WITH UNIT.



**1 ATTIC MECHANICAL PLAN**  
SCALE: 1/8"=1'-0"



RETURN FAN	MIXING BOX	MIXING BOX	MERV 4 PRE-FILTERS	HOT WATER COIL	ACCESS	COOLING COIL	ACCESS	SUPPLY FAN	ACCESS	MERV 4 FILTER SUBSTITUTION	PLENUM
------------	------------	------------	--------------------	----------------	--------	--------------	--------	------------	--------	----------------------------	--------

**1 AHU-1,2 DETAIL**  
SCALE: NONE

## THE COTTAGE at THORNAPPLE

Hastings, MI

PROJ. NO.: 2011-11-021

02/21/12 ISSUED FOR BIDS

CONSTRUCTION MANAGER  
**CM CONTRACTING**  
CIVIL ENGINEER  
**HURLEY & STEWART**  
STRUCTURAL ENGINEER  
**JDH ENGINEERING**  
MECH. ENGINEER  
**E2W ENGINEERING**  
2000-SERVICE CONSULTANT  
**MILLIS & ASSOCIATES**

**ECKERT WORDELL**  
ARCHITECTURE • ENGINEERING • INTERIOR DESIGN  
161 East Michigan Ave, Suite 200  
Kalamazoo, MI 49007-3807  
**PHONE:** 269-388-7313  
**FAX:** 269-388-7300  
**WEB:** www.eckert-wordell.com  
© 2011 Eckert Wordell, LLC

**ATTIC MECHANICAL PLAN**

M120