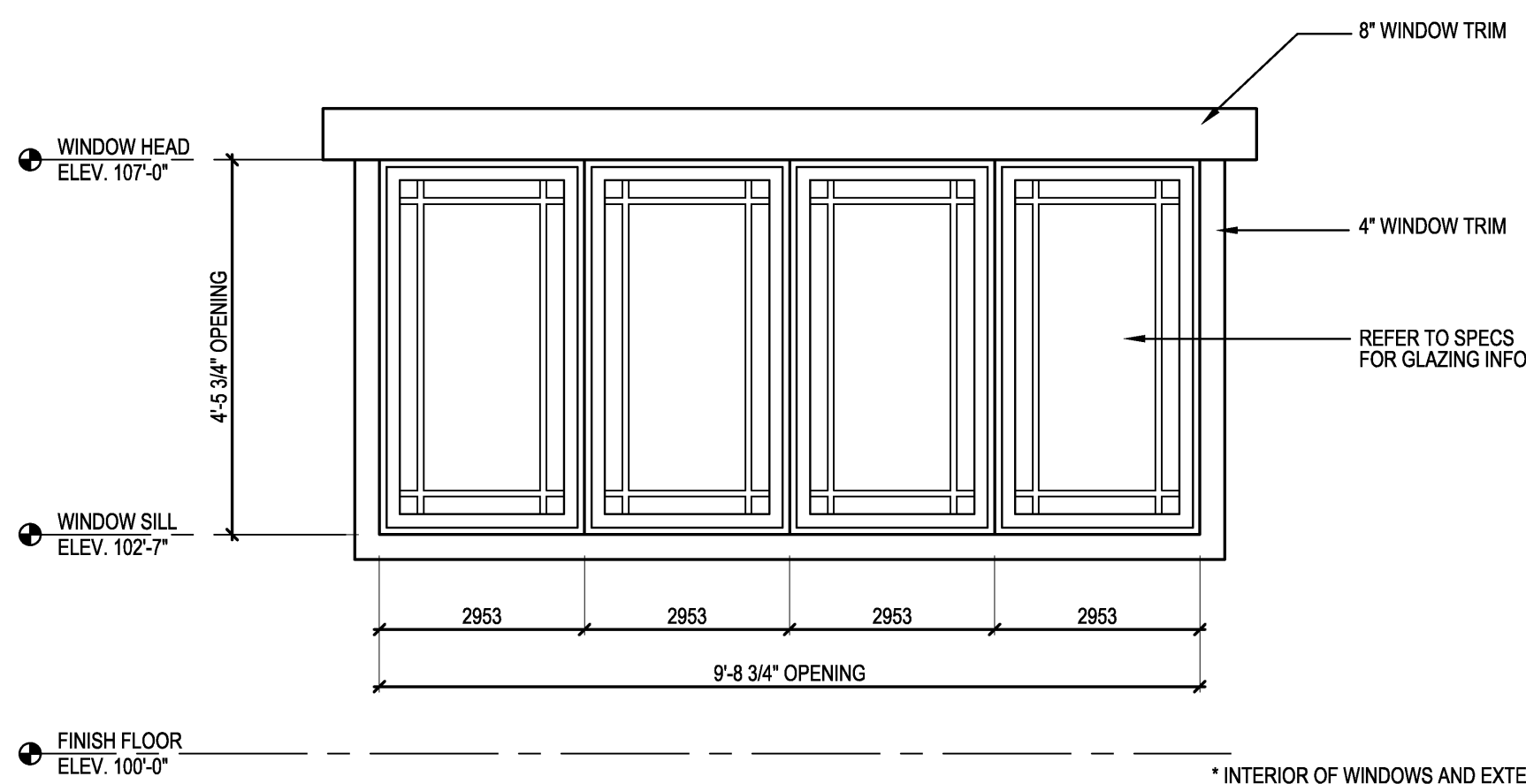
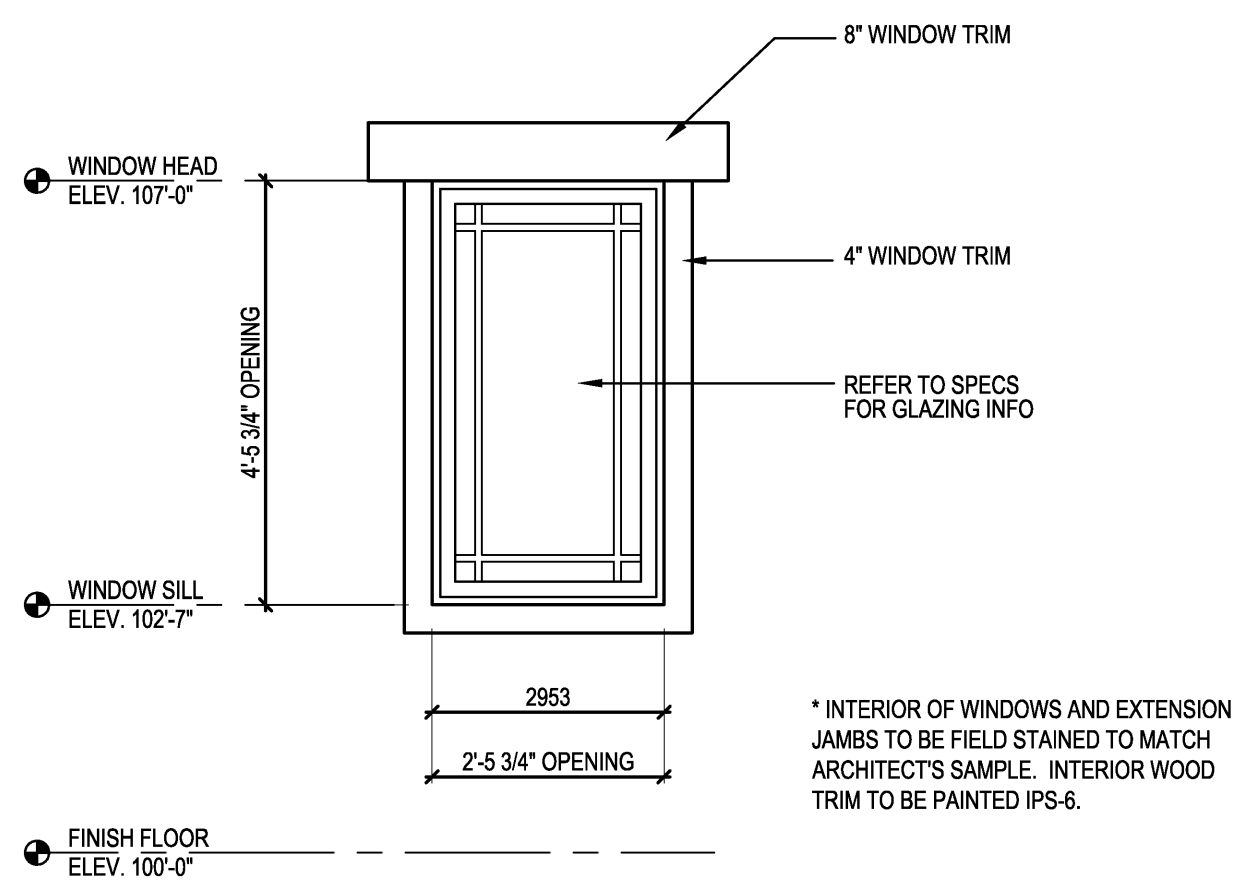


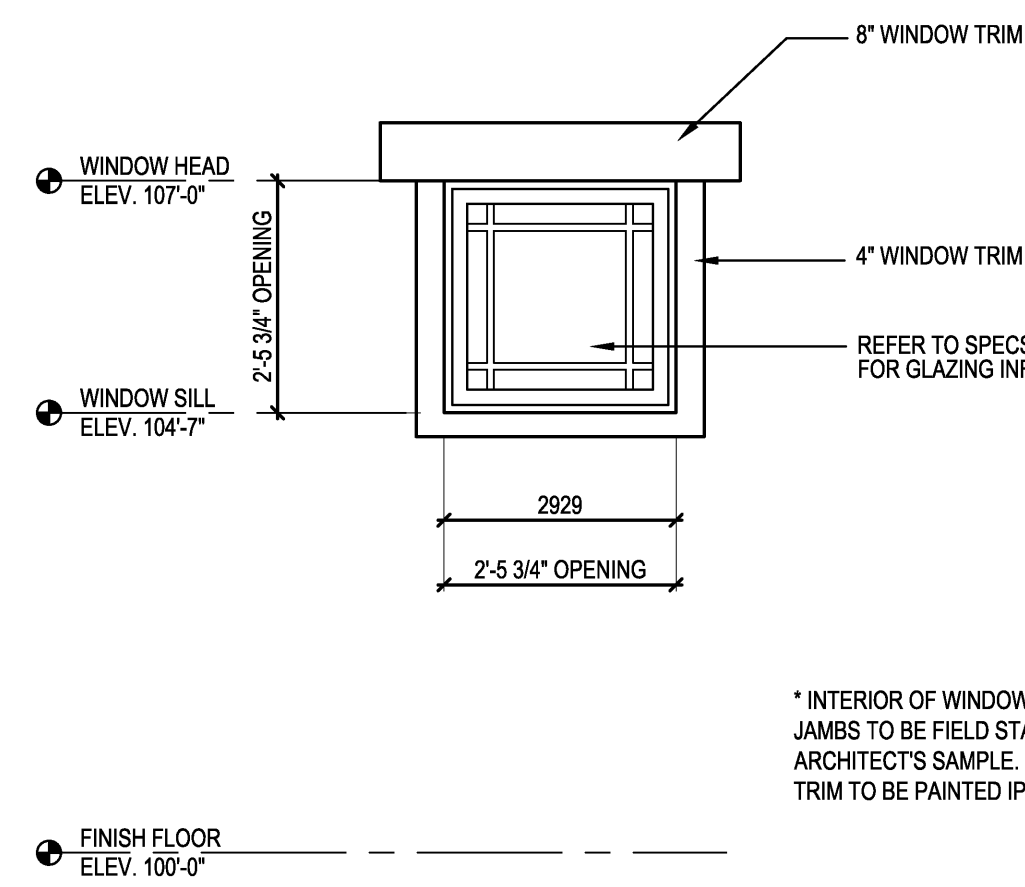
**A WINDOW ELEVATION**  
SCALE: 1/2"=1'-0"



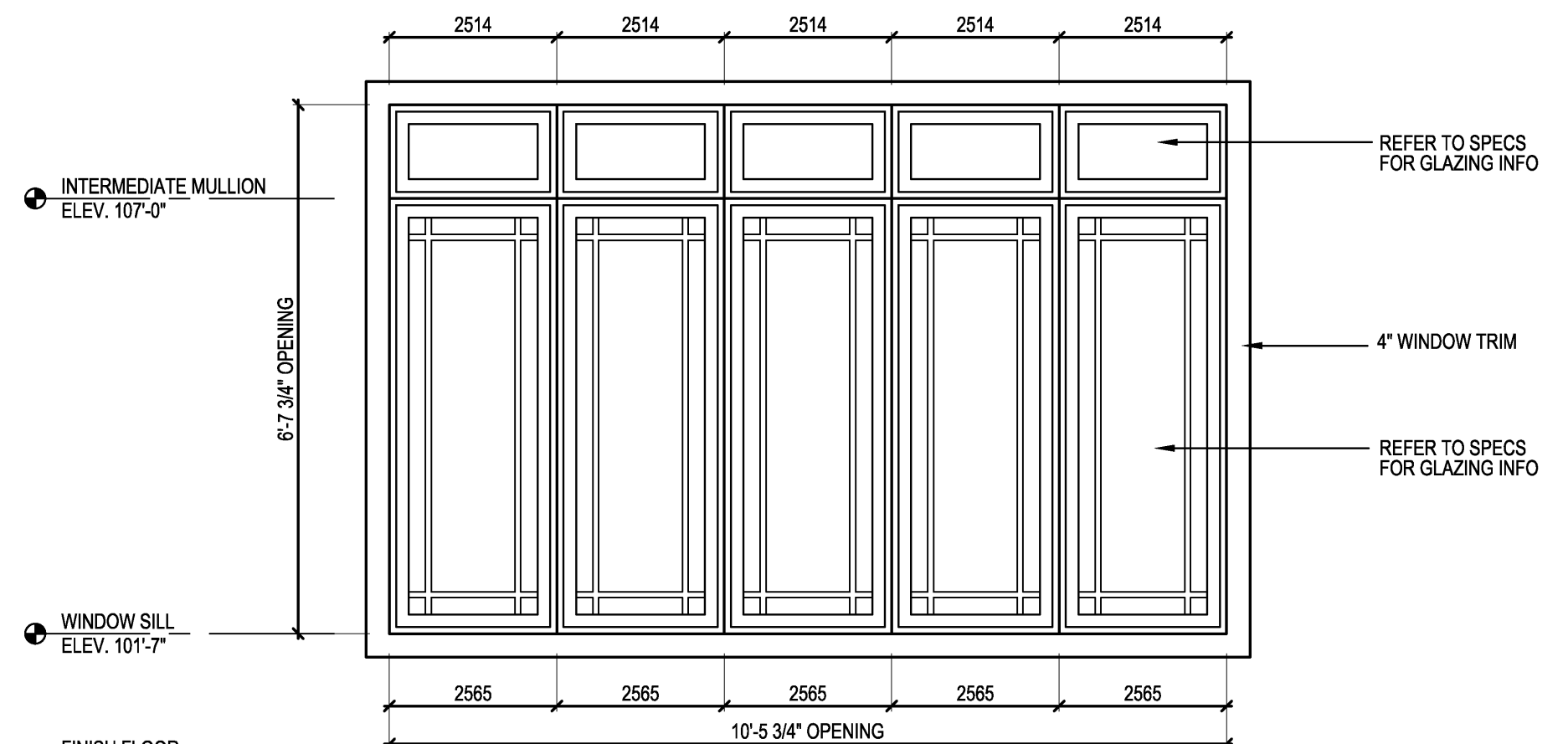
**B WINDOW ELEVATION**  
SCALE: 1/2"=1'-0"



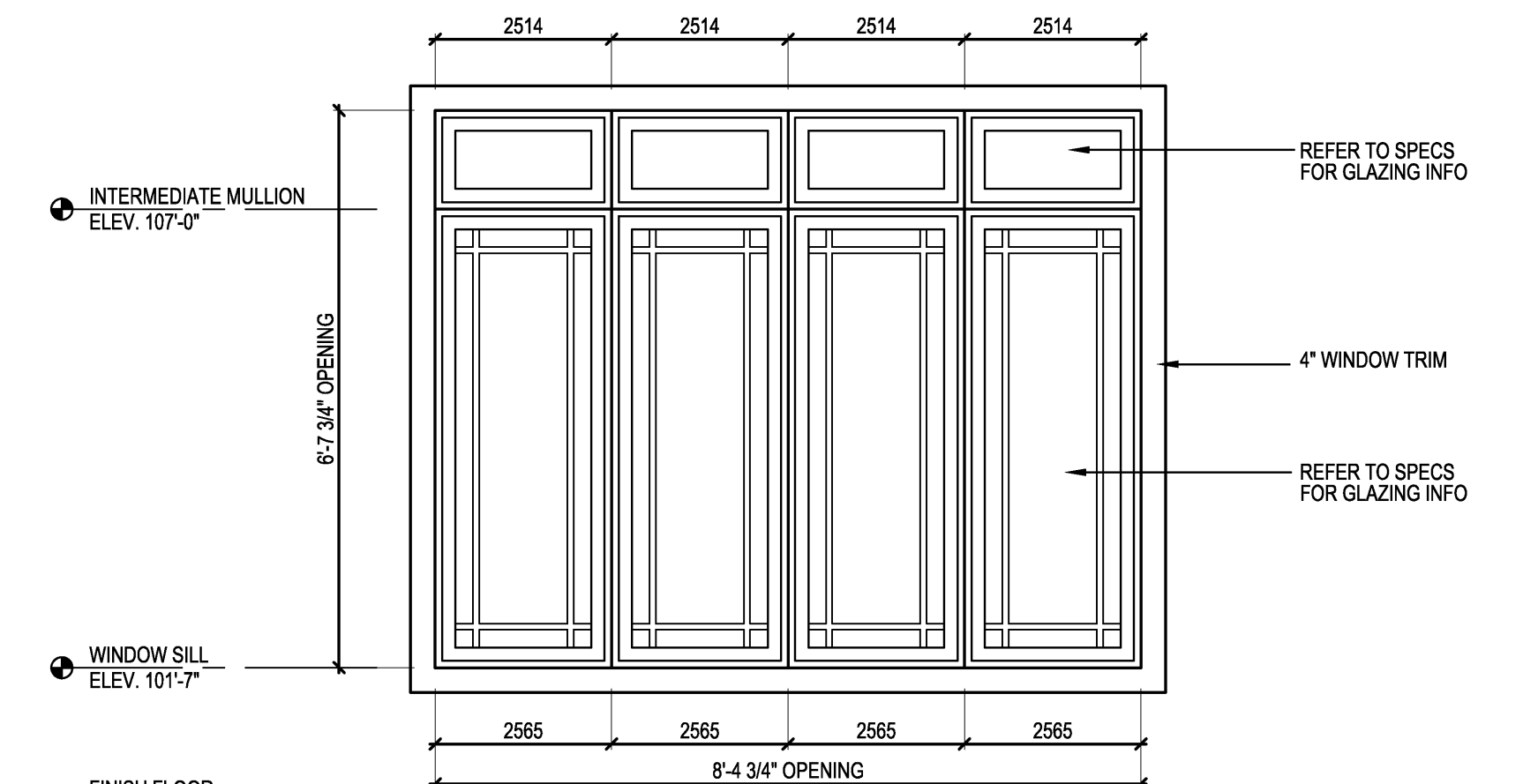
**C WINDOW ELEVATION**  
SCALE: 1/2"=1'-0"



**D WINDOW ELEVATION**  
SCALE: 1/2"=1'-0"



**E WINDOW ELEVATION**  
SCALE: 1/2"=1'-0"



**F WINDOW ELEVATION**  
SCALE: 1/2"=1'-0"

## GENERAL NOTES

- + WINDOWS BASIS OF DESIGN - PELLA DESIGNER SERIES ALUMINUM CLAD WOOD WITH PRairie STYLE GRILLES AND INTEGRAL BLINDS (REFER TO SPECIFICATION FOR MORE INFORMATION)
- + COLOR OF EXTERIOR WINDOWS TO BE CLASSIC WHITE
- + REFER TO SPECIFICATIONS FOR GLAZING AND HARDWARE INFORMATION

## HARDWARE SETS

<b>SET 1.0</b>			
4	HINGE	T4A3786 5" X 4-1/2"	US10B MK
1	PASSAGE SET	T13710 116T SA114	613 RU
1	SECRET GATE LATCH	602	US10 BRO
1	WALL STOP	US10	BRO
<b>SET 2.0</b>			
3	HINGE	T42714 4-1/2" X 4-1/2"	US10B MK
1	PASSAGE SET	T13710 116T SA114	613 RU
1	OVERHEAD STOP	2-SERIES	613 RF
<b>SET 3.0</b>			
3	HINGE	T4A3786 5" X 4-1/2"	US10B MK
1	PASSAGE SET	T13710 116T SA114	613 RU
1	WALL STOP	US10B	RO

<b>SET 4.0</b>			
3	HINGES	BY DOOR SUPPLIER/MANUFACTURER	
1	DUMMY EXIT DEVICE	ED500B X M10	613 RU
1	PULL	RM201	US10B RO
1	AUTOMATIC OPERATOR	680	NO
2	DOOR SWITCH	680	NO
1	WEATHERSEAL	BY DOOR SUPPLIER/MANUFACTURER	
1	THRESHOLD	BY DOOR SUPPLIER/MANUFACTURER	
1	DOOR BOTTOM SWEEP	BY DOOR SUPPLIER/MANUFACTURER	
1	DOOR CONTACT	BY COMPASS	
1	WIRING DIAGRAMS	ELEVATION & POINT-TO-POINT DIAGRAMS	

OPERATIONAL DESCRIPTION: DOOR IS NORMALLY MANUALLY PUSH/PULL OR ASSISTED ENTRY/EGRESS BY PRESSING EITHER DOOR SWITCH TO ACTIVATE AUTOMATIC OPERATOR. EGRESS AT ALL TIMES BY PUSHING DOOR OPEN AND EXITING DOOR CONTACT MONITORS THE POSITION OF THE DOOR AND REPORTS THIS STATUS TO THE SECURITY SYSTEM.

<b>SET 5.0</b>			
1	CONTINUOUS HINGE	DFMSLF-HD1 PT	PE
1	POWER TRANSFER	EL-CEPT	10B SU
1	EXIT DEVICE	ED500 M82 M110 CT7SD	613 RU
1	DELAY EGRESS MAG LOCK	IM20A	SU
1	MORTISE CYLINDER	1070 X CT7SD	613 RU
2	SFIC CORE	1C-7	613 BE
1	ELECTRIC STRIKE	680	HS
1	AUTOMATIC OPERATOR	680	NO
1	WIRING HARNESS	QC-C306	NO
2	WIRING HARNESS	QC-C1500P	MK
1	POWER SUPPLY	BPS-24	SU
3	CARD READER	752F919	SU
1	DOOR CONTACT	BY COMPASS	
1	DOOR BELL	BY COMPASS	
1	WIRING DIAGRAMS	ELEVATION & POINT-TO-POINT DIAGRAMS	

OPERATIONAL DESCRIPTION: DOOR IS NORMALLY CLOSED, LOCKED AND SECURED WITH DELAYED EGRESS MAG LOCK. PRESENTING A VALID CARD TO EITHER OF THE CARD READERS (INSIDE OR VESTIBULE) OR PRESSING PUSH BUTTON IN NURSE STATION WILL MOMENTARILY RELEASE DELAYED EGRESS MAG LOCK AND ELECTRIC STRIKE AND ACTIVATE AUTOMATIC OPERATOR ALLOWING AUTHORIZED ENTRY OR EGRESS. ATTEMPTING TO EXIT WILL ACTIVATE DELAYED EGRESS CYCLE IN MAGNETIC LOCK. LOCAL ALARM WILL SOUND. AFTER 15 SECONDS DOOR IS RELEASED ALLOWING EGRESS BY PRESSING RAIL OF EXIT DEVICE AND EXITING. ALARM IS RESET BY CYLINDER IN MAG LOCK. UPON ACTIVATION OF FIRE ALARM SYSTEM, POWER TO THE MAGNETIC LOCK IS INTERRUPTED ALLOWING FREE AND IMMEDIATE EGRESS.

<b>SET 6.0</b>			
2	HINGE	T42714 4-1/2" X 4-1/2"	US10B MK
1	HINGE	T42714 4-1/2" X 4-1/2" X OC12	US10B MK
1	INTEGRATED CARD READER LOCK	ML2065 116T RNE1 M802 CT7SD 12AD	613 RU
1	SFIC CORE	1C-7	613 BE
1	CLOSER	DO200	680 RU
1	WALL STOP	RM880	US10 BRO
1	POWER SUPPLY	BPS-12	SU
1	WIRING HARNESS	QC-C306	NO
1	WIRING HARNESS	QC-C1500P	MK
1	WIRING DIAGRAMS	ELEVATION & POINT-TO-POINT DIAGRAMS	

OPERATIONAL DESCRIPTION: DOOR IS NORMALLY CLOSED AND LOCKED. PRESENTING A VALID CARD TO THE CARD READER ON THE LOCKSET WILL MOMENTARILY UNLOCK OUTSIDE LEVER, ALLOWING ENTRY. ENTRY ALSO BY KEY IN CYLINDER. EGRESS AT ALL TIMES BY OPERATING INSIDE LEVER AND EXITING. DOOR POSITION SWITCH IN LOCKSET MONITORS THE POSITION OF THE DOOR AND REPORTS THIS STATUS TO THE SECURITY SYSTEM.

<b>SET 7.0</b>			
3	HINGE	T42714 4-1/2" X 4-1/2"	US10B MK
1	PASSAGE SET	ML2010 116T	613 RU
1	WALL STOP	RM880	US10 BRO
<b>SET 8.0</b>			
2	HINGE	T42714 4-1/2" X 4-1/2"	US10B MK
1	HINGE	T42714 4-1/2" X 4-1/2" X OC12	US10B MK
1	INTEGRATED CARD READER LOCK	ML2065 116T RNE1 M802 CT7SD 12AD	613 RU
1	SFIC CORE	1C-7	613 BE
1	CLOSER	DO200	680 RU
1	WALL STOP	RM880	US10 BRO
1	POWER SUPPLY	BPS-12	SU
1	WIRING HARNESS	QC-C306	NO
1	WIRING HARNESS	QC-C1500P	MK
1	WIRING DIAGRAMS	ELEVATION & POINT-TO-POINT DIAGRAMS	

OPERATIONAL DESCRIPTION: DOOR IS NORMALLY CLOSED AND LOCKED. PRESENTING A VALID CARD TO THE CARD READER ON THE LOCKSET WILL MOMENTARILY UNLOCK OUTSIDE LEVER, ALLOWING ENTRY. ENTRY ALSO BY KEY IN CYLINDER. EGRESS AT ALL TIMES BY OPERATING INSIDE LEVER AND EXITING. DOOR POSITION SWITCH IN LOCKSET MONITORS THE POSITION OF THE DOOR AND REPORTS THIS STATUS TO THE SECURITY SYSTEM.

<b>SET 9.0</b>			
3	HINGE	T42714 4-1/2" X 4-1/2"	US10B MK
1	PRIVACY W/ INDICATOR	ML2030 116T M19V	613 RU
1	CLOSER	DO200 M1	680 RU
1	WALL STOP	RM880	US10B RO
<b>SET 10.0</b>			
2	HINGE	T4A3786 5" X 4-1/2"	US10B MK
1	HINGE	T4A3786 5" X 4-1/2" X OC12	US10B MK
1	INTEGRATED CARD READER LOCK	ML2065 116T RNE1 M802 CT7SD 12AD	613 RU
1	SFIC CORE	1C-7	613 BE
1	CLOSER	DO200	680 RU
1	MAGNETIC HOLDER	997	680 RF
1	GASKETING	S880	PE
1	POWER SUPPLY	BPS-12	SU
1	WIRING HARNESS	QC-C306	NO
1	WIRING HARNESS	QC-C1500P	MK
1	WIRING DIAGRAMS	ELEVATION & POINT-TO-POINT DIAGRAMS	

OPERATIONAL DESCRIPTION: DOOR IS NORMALLY CLOSED AND LOCKED. PRESENTING A VALID CARD TO THE CARD READER ON THE LOCKSET WILL MOMENTARILY UNLOCK OUTSIDE LEVER, ALLOWING ENTRY. ENTRY ALSO BY KEY IN CYLINDER. EGRESS AT ALL TIMES BY OPERATING INSIDE LEVER AND EXITING. DOOR POSITION SWITCH IN LOCKSET MONITORS THE POSITION OF THE DOOR AND REPORTS THIS STATUS TO THE SECURITY SYSTEM.

DOORS CAN BE PROGRAMMED THROUGH ACCESS CONTROL SYSTEM TO BE LOCKED/UNLOCKED AT SPECIFIED TIMES.

DOOR POSITION SWITCH IN LOCKSET MONITORS THE POSITION OF THE DOOR AND REPORTS THIS STATUS TO THE SECURITY SYSTEM.

<b>SET 11.0</b>			
2	HINGE	T4A3786 5" X 4-1/2"	US10B MK
1	HINGE	T4A3786 5" X 4-1/2" X OC12	US10B MK
1	INTEGRATED CARD READER LOCK	ML2065 116T RNE1 M802 CT7SD 12AD	613 RU
1	SFIC CORE	1C-7	613 BE
1	CLOSER	DO200	680 RU
1	WALL STOP	RM880	US10B RO
1	GASKETING	S880	PE
1	POWER SUPPLY	BPS-12	SU
1	WIRING HARNESS	QC-C306	NO
1	WIRING HARNESS	QC-C1500P	MK
1	WIRING DIAGRAMS	ELEVATION & POINT-TO-POINT DIAGRAMS	

OPERATIONAL DESCRIPTION: DOOR IS NORMALLY CLOSED AND LOCKED. PRESENTING A VALID CARD TO THE CARD READER ON THE LOCKSET WILL MOMENTARILY UNLOCK OUTSIDE LEVER, ALLOWING ENTRY. ENTRY ALSO BY KEY IN CYLINDER. EGRESS AT ALL TIMES BY OPERATING INSIDE LEVER AND EXITING. DOOR POSITION SWITCH IN LOCKSET MONITORS THE POSITION OF THE DOOR AND REPORTS THIS STATUS TO THE SECURITY SYSTEM.

<b>SET 12.0</b>			
6	HINGE	T42714 4-1/2" X 4-1/2"	US10B MK
1	FLUSH BOLT SET	1945	US10 BRO
1	DUST PROOF STRIKE	570	US10B RO
1	CLOSER	T13710 116T SA114	613 RU
2	OVERHEAD STOP	2-SERIES	613E RF

<b>SET 13.0</b>			
1	DOOR LOOP	BY DOOR SUPPLIER/MANUFACTURER	613 SU
1	EXIT DEVICE	TSS-C	613 RU
1	PULL	RM201	US10B RO
2	SFIC CORE	1C-7	613 BE
1	DELAY EGRESS MAG LOCK	IM20A	613 SU
1	MORTISE CYLINDER	1070 X CT7SD	613 HS
1	ELECTRIC STRIKE	9600	613 HS
1	AUTOMATIC OPERATOR	680	680 NO
1	POWER SUPPLY	BPS-24	NO
1	WIRING HARNESS	QC-C306	NO
2	WIRING HARNESS	QC-C1500P	MK
2	CARD READER	752F919	RU
1	DOOR CONTACT	BY COMPASS	
1	DOOR BELL	BY COMPASS	
1	WIRING DIAGRAMS	ELEVATION & POINT-TO-POINT DIAGRAMS	

OPERATIONAL DESCRIPTION: DOOR IS NORMALLY CLOSED, LOCKED AND SECURED WITH DELAYED EGRESS MAG LOCK. PRESENTING A VALID CARD TO EITHER OF THE CARD READERS (INSIDE OR OUTSIDE) WILL MOMENTARILY RELEASE DELAYED EGRESS MAG LOCK, KEYS OF ELECTRIC STRIKE AND ACTIVATE AUTOMATIC OPERATOR, ALLOWING AUTHORIZED ENTRY OR EGRESS. ATTEMPTING TO EXIT WITHOUT A CARD WILL ACTIVATE DELAYED EGRESS CYCLE IN MAGNETIC LOCK. LOCAL ALARM WILL SOUND. AFTER 15 SECONDS DOOR IS RELEASED ALLOWING EGRESS BY PRESSING RAIL OF EXIT DEVICE AND EXITING. ALARM IS RESET BY CYLINDER IN MAG LOCK. UPON ACTIVATION OF FIRE ALARM SYSTEM, POWER TO THE MAGNETIC LOCK IS INTERRUPTED ALLOWING FREE AND IMMEDIATE EGRESS.

<b>SET 14.0</b>			
1	CONTINUOUS HINGE	DFMH1	PE
1	PASSAGE SET	ML2010 116T	613 RU
1	CLOSER	DO200 M1 X A1	680 RU
1	WALL STOP & HOLDER	4945	US10B RO
1	DOOR CONTACT	BY COMPASS	

DOOR CONTACT MONITORS POSITION OF THE DOOR AND REPORTS THIS STATUS TO THE SECURITY SYSTEM.

<b>SET 15.0</b>			
2	HINGE	T42714 4-1/2" X 4-1/2"	US10B MK
1	HINGE	T42714 4-1/2" X 4-1/2" X OC12	US10B MK
1	INTEGRATED CARD READER LOCK	ML2065 116T RNE1 M802 CT7SD 12AD	613 RU
1	SFIC CORE	1C-7	613 BE
1	CLOSER	DO200	680 RU
1	WALL STOP	RM880	US10B RO
1	GASKETING	S880	PE
1	POWER SUPPLY	BPS-12	SU
1	WIRING HARNESS	QC-C306	NO
1	WIRING HARNESS	QC-C1500P	MK
1	WIRING DIAGRAMS	ELEVATION & POINT-TO-POINT DIAGRAMS	

OPERATIONAL DESCRIPTION: DOOR IS NORMALLY CLOSED AND LOCKED. PRESENTING A VALID CARD TO THE CARD READER ON THE LOCKSET WILL MOMENTARILY UNLOCK OUTSIDE LEVER, ALLOWING ENTRY. ENTRY ALSO BY KEY IN CYLINDER. EGRESS AT ALL TIMES BY OPERATING INSIDE LEVER AND EXITING. DOOR POSITION SWITCH IN LOCKSET MONITORS THE POSITION OF THE DOOR AND REPORTS THIS STATUS TO THE SECURITY SYSTEM.

<b>SET 16.0</b>			
1	CONTINUOUS HINGE	DFMH1	PE
1	PASSAGE SET	ML2010 116T	613 RU
1	CLOSER	DO200	680 RU
1	MAGNETIC HOLDER	997	680 RF
1	GASKETING	S880	NO

OPERATIONAL DESCRIPTION: DOOR IS NORMALLY HELD OPEN BY MAGNETIC HOLDER. UPON ACTIVATION OF FIRE ALARM SYSTEM, POWER TO THE MAGNETIC HOLDER IS INTERRUPTED, ALLOWING DOORS TO CLOSE AND LATCH. EGRESS AT ALL TIMES BY OPERATING INSIDE LEVER AND EXITING.

<b>SET 17.0</b>			
1	CONTINUOUS HINGE	DFMH1	PE
1	STOREROOM LOCK	ML2057 116T CT7SD	613 RU
1	SFIC CORE	1C-7	613 BE
1	ELECTRIC STRIKE	1008	613 HS
1	ELECTRIC STRIKE FACERATE	KM	613 HS
1	ELECTRONIC ADAPTOR	2004M	613 HS
1	SMART PAC	2004M3	613 HS
1	AUTOMATIC OPERATOR	680	NO
1	DOOR SWITCH	289DPK	NO
1	WALL STOP	RM880	US10B RO
1	GASKETING	S880	PE
1	POWER SUPPLY	BPS-24	SU
1	WIRING HARNESS	QC-C306	NO
1	WIRING HARNESS	QC-C1500P	MK
1	CARD READER	752F919	RU
1	WIRING DIAGRAMS	ELEVATION & POINT-TO-POINT DIAGRAMS	

OPERATIONAL DESCRIPTION: DOOR IS NORMALLY CLOSED AND LOCKED. PRESENTING A VALID CARD TO THE CARD READER WILL MOMENTARILY RELEASE KEYS OF ELECTRIC STRIKE AND ACTIVATE AUTOMATIC OPERATOR. ALLOWING ENTRY. ENTRY ALSO BY KEY IN CYLINDER. PRESSING DOOR SWITCH WILL ACTIVATE AUTOMATIC OPERATOR ALLOWING ASSISTED EGRESS. MANUAL EGRESS AT ALL TIMES BY OPERATING INSIDE LEVER AND EXITING.

<b>SET 18.0</b>			
2	HINGE	T42714 4-1/2" X 4-1/2"	US10B MK
1	HINGE	T42714 4-1/2" X 4-1/2" X OC12	US10B MK
1	INTEGRATED CARD READER LOCK	ML2065 116T RNE1 M802 CT7SD 12AD	613 RU
1	SFIC CORE	1C-7	613 BE
1	CLOSER	DO200	680 RU
1	WALL STOP	RM880	US10B RO
1	PULL	RM201	US10B RO
1	POWER SUPPLY	BPS-12	SU
1	WIRING HARNESS	QC-C306	NO
1	WIRING HARNESS	QC-C1500P	MK
1	WIRING DIAGRAMS	ELEVATION & POINT-TO-POINT DIAGRAMS	

OPERATIONAL DESCRIPTION: DOOR IS NORMALLY CLOSED AND LOCKED. PRESENTING A VALID CARD TO THE CARD READER ON THE LOCKSET WILL MOMENTARILY UNLOCK OUTSIDE LEVER, ALLOWING ENTRY. ENTRY ALSO BY KEY IN CYLINDER. EGRESS AT ALL TIMES BY OPERATING INSIDE LEVER AND EXITING. DOOR POSITION SWITCH IN LOCKSET MONITORS THE POSITION OF THE DOOR AND REPORTS THIS STATUS TO THE SECURITY SYSTEM.

<b>SET 19.0</b>			
2	CONTINUOUS HINGE	DFMH1 PT	PE
2	POWER TRANSFER	EL-CEPT	10B SU
2	SVR EXIT DEVICE	ED500B M84 M85 M110	613 RU
2	AUTOMATIC OPERATOR	680	NO
2	WALL STOP	RM880/10880	US10B RO
1	GASKETING	S880	PE
1	GASKETING	ST70	PE
1	POWER SUPPLY	BPS-12	SU
2	CARD READER	752F919	RU
2	DOOR CONTACT	BY COMPASS	
1	WIRING DIAGRAMS	ELEVATION & POINT-TO-POINT DIAGRAMS	

OPERATIONAL DESCRIPTION: DOOR IS NORMALLY CLOSED AND LATCHED. PRESENTING A VALID CARD TO THE CARD READER ON EITHER SIDE OF THE OPENING WILL RETRACT LATCHES OF EXIT DEVICES AND ACTIVATE AUTOMATIC OPERATORS ALLOWING ENTRY/EGRESS.

<b>SET 20.0</b>			
2	HINGE	T42714 4-1/2" X 4-1/2"	US10B MK
1	HINGE	T42714 4-1/2" X 4-1/2" X OC12	US10B MK
1	INTEGRATED CARD READER LOCK	ML2065 116T RNE1 M802 CT7SD 12AD	613 RU
1	SFIC CORE	1C-7	613 BE
1	CLOSER	DO200	680 RU
1	WALL STOP	RM880	US10B RO
1	WALL STOP	RM880	US10B RO
1	GASKETING	S880	PE
1	POWER SUPPLY	BPS-12	SU
1	WIRING HARNESS	QC-C306	NO
1	WIRING HARNESS	QC-C1500P	MK
1	WIRING DIAGRAMS	ELEVATION & POINT-TO-POINT DIAGRAMS	

OPERATIONAL DESCRIPTION: DOOR IS NORMALLY CLOSED AND LOCKED. PRESENTING A VALID CARD TO THE CARD READER ON THE LOCKSET WILL MOMENTARILY UNLOCK OUTSIDE LEVER, ALLOWING ENTRY. ENTRY ALSO BY KEY IN CYLINDER. EGRESS AT ALL TIMES BY OPERATING INSIDE LEVER AND EXITING. DOOR POSITION SWITCH IN LOCKSET MONITORS THE POSITION OF THE DOOR AND REPORTS THIS STATUS TO THE SECURITY SYSTEM.

<b>SET 21.0</b>			
3	HINGE	T42714 4-1/2" X 4-1/2"	US10B MK
1	PRIVACY W/ INDICATOR	ML2030 116T M19V	613 RU
1	CLOSER	DO200	680 RU
1	WALL STOP	RM880	US10 BRO

<b>SET 22.0</b>			
3	HINGE	T42714 4-1/2" X 4-1/2"	US10B MK
1	PASSAGE SET	ML2010 116T	613 RU
1	WALL STOP	RM880	US10B RO

<b>SET 23.0</b>
-----------------