

- 570Z-4P 8-MPR SERIES
■ 570Z-4P 10-MPR SERIES
●●●●● 570Z-4P 12-MPR SERIES
▼▼▼▼▼ 570Z-4P 15-MPR SERIES
●●●●● 570Z-12P 8-MPR SERIES
●●●●● 570Z-12P 12-MPR SERIES
●●●●● 570Z-12P 15-MPR SERIES
● T5PCK (7/C) #1.5 LOW ANGLE NOZZLE
● T5PCK (7/C) #3.0 LOW ANGLE NOZZLE
● T5PCK (7/C) #3.0 NOZZLE
● T5PCK (7/C) #6.0 NOZZLE
●● 474-00
● TPVF100
□ CCF100

LEGEND

- TORO FIXED SPRAY POP-UP (4")
TORO FIXED SPRAY POP-UP (4")
TORO FIXED SPRAY POP-UP (4")
TORO FIXED SPRAY POP-UP (4")
TORO FIXED SPRAY POP-UP (12")
TORO FIXED SPRAY POP-UP (12")
TORO FIXED SPRAY POP-UP (12")
TORO GEAR DRIVEN ROTARY POP-UP
TORO GEAR DRIVEN ROTARY POP-UP
TORO GEAR DRIVEN ROTARY POP-UP
TORO GEAR DRIVEN ROTARY POP-UP
TORO 1" QUICK COUPLER VALVE
W(1) KEY AND HOSE SWIVEL
TORO 1" ELECTRIC VALVE
TORO CUSTOM COMMAND CONTROLLER
W(1)-100-WIRELESS WEATHER SENSOR

— PVC 1/2" PIPE (ALL PIPE 1-1/2" AND LARGER)
— 100# POLYETHYLENE PIPE (PE-3406 NSF APPROVED) (ALL PIPE DOWNSTREAM OF VALVE 1-1/2" AND SMALLER)

NOT SHOWN #14 UL APPROVED 24V RED CONTROL WIRE WITH A #14 UL APPROVED WHITE COMMON WIRE

- POINT OF CONNECTION (P.O.C.)
- 4V-507-02 CONBRACO 1-1/2" PRESSURE VACUUM BREAKER
- 206 SERIES REDWHITE 1-1/2" ISOLATION VALVE

GENERAL NOTES:

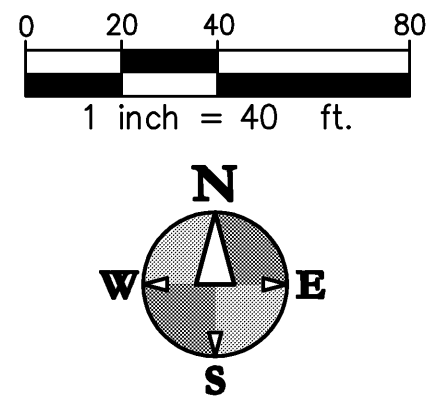
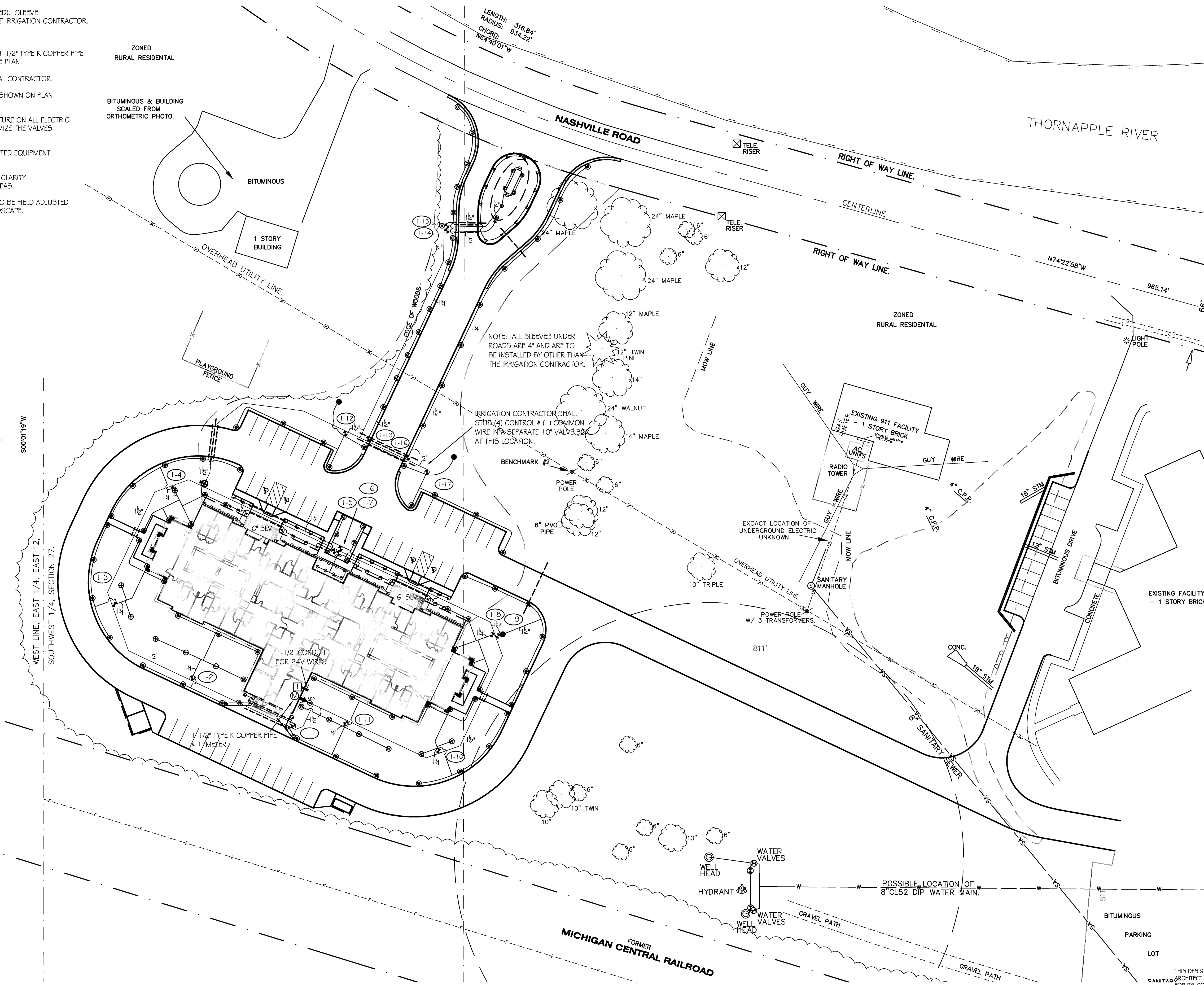
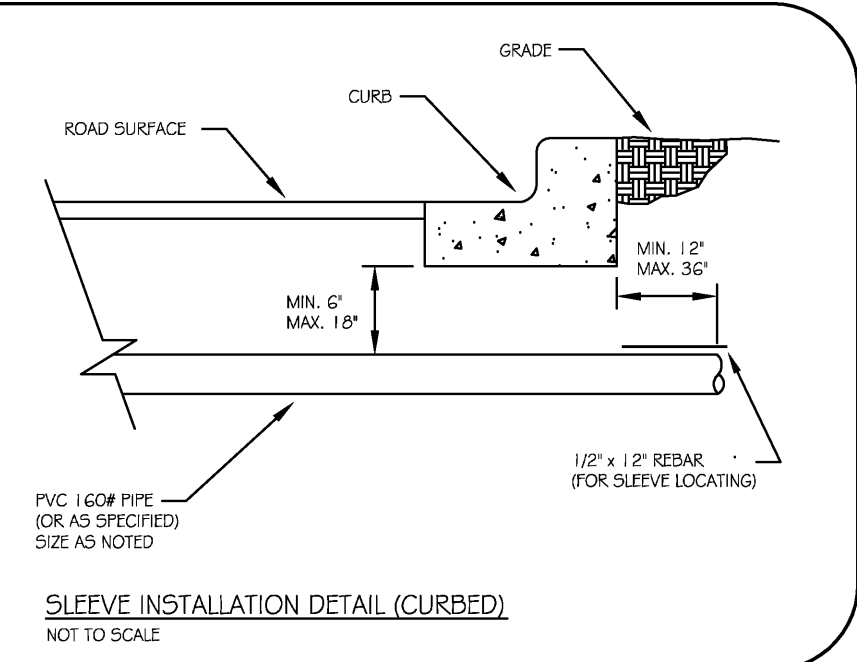
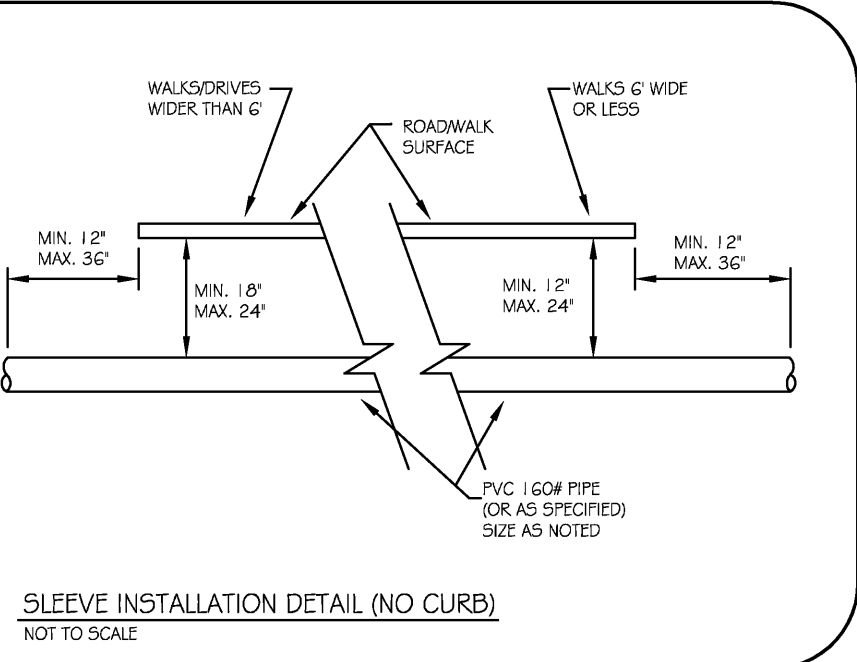
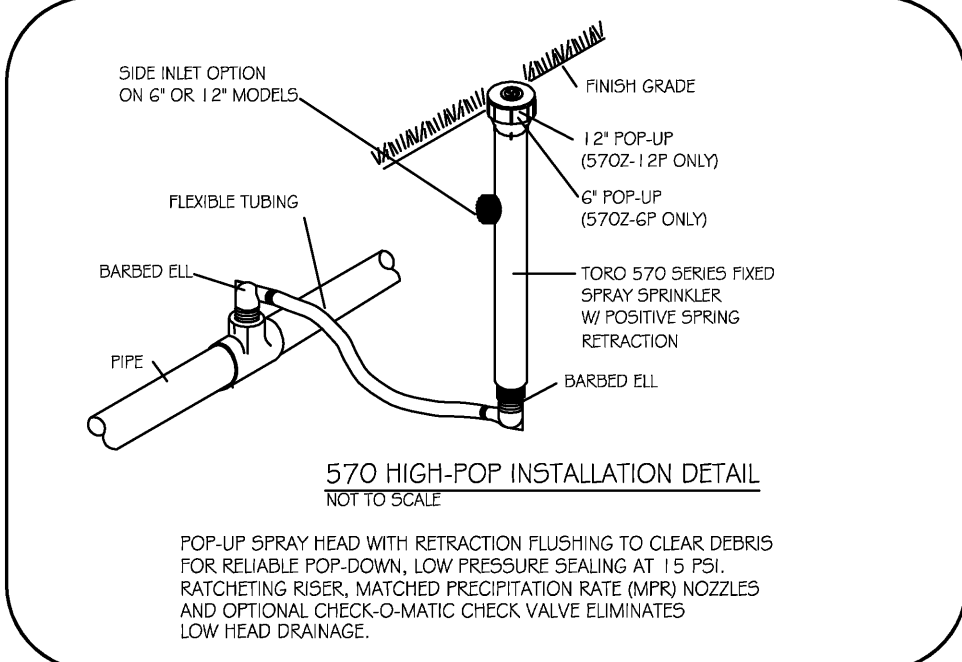
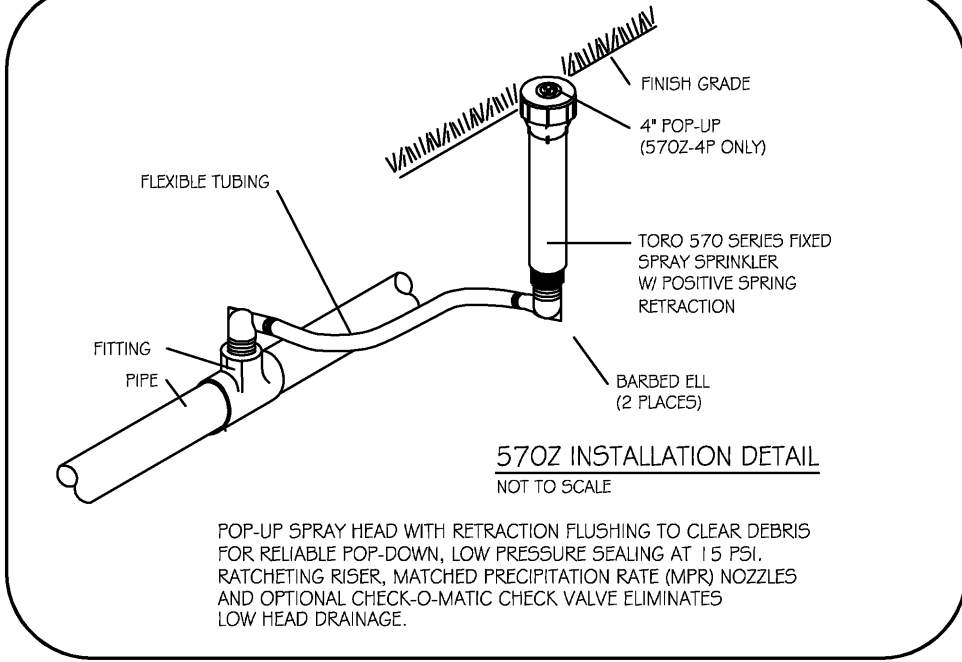
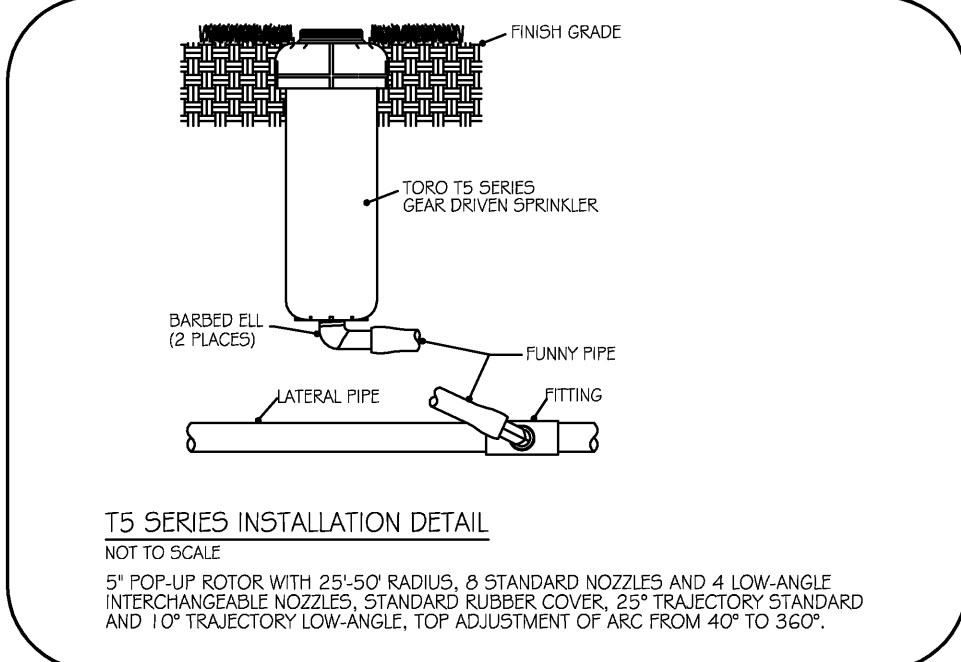
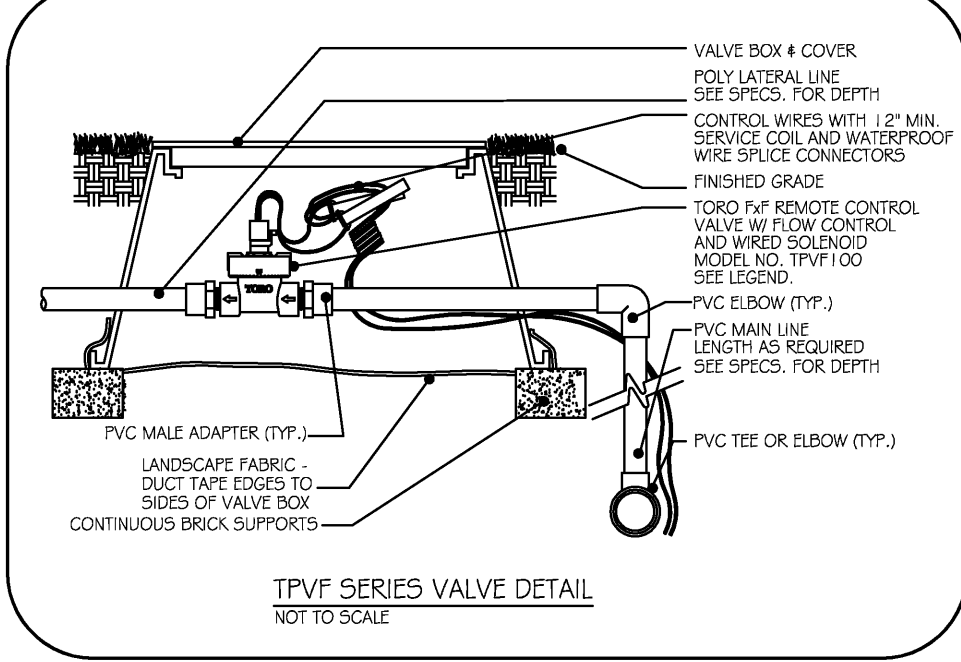
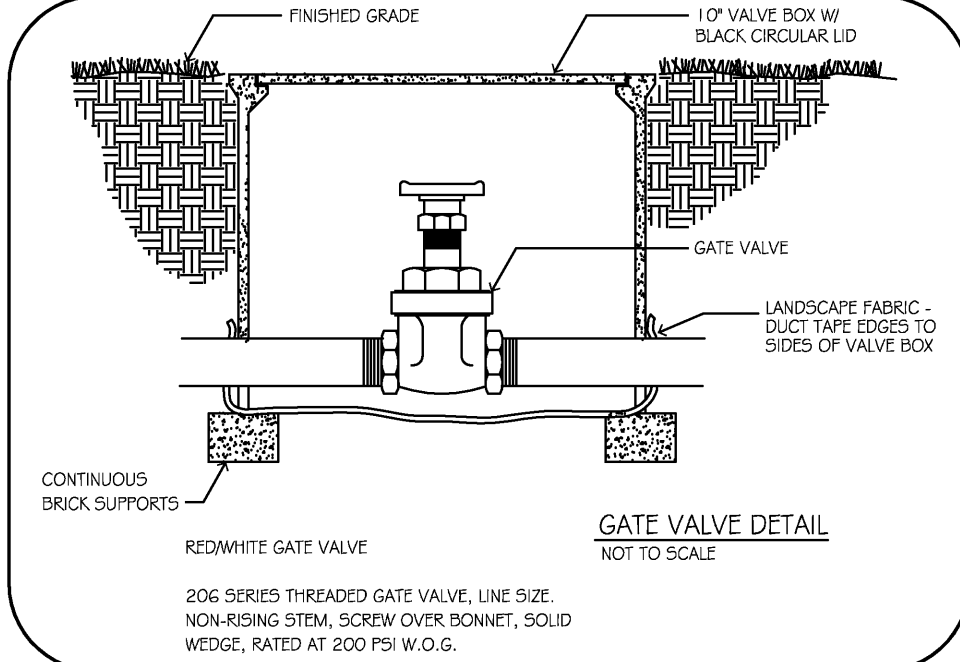
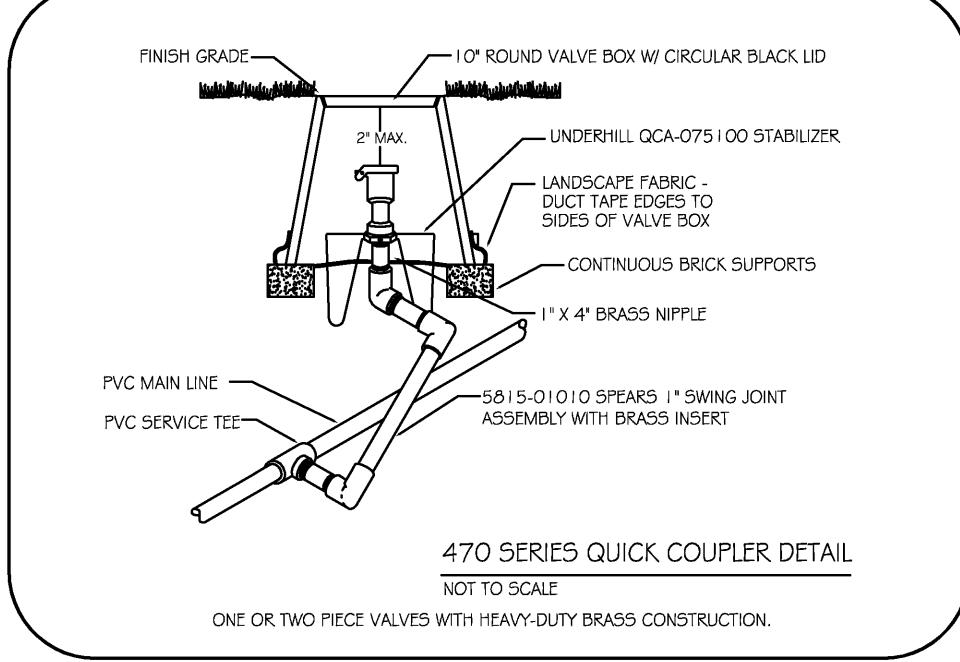
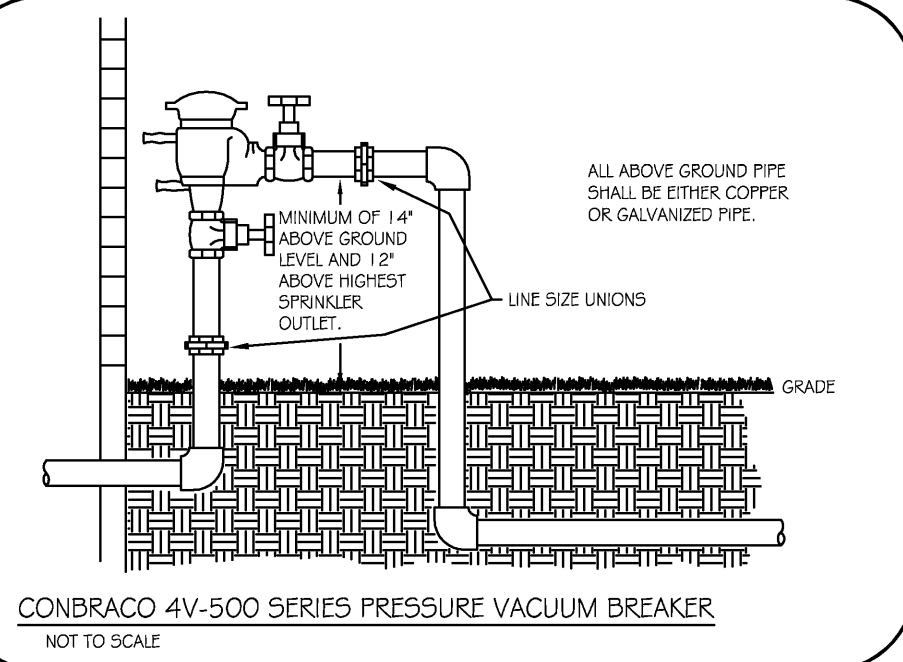
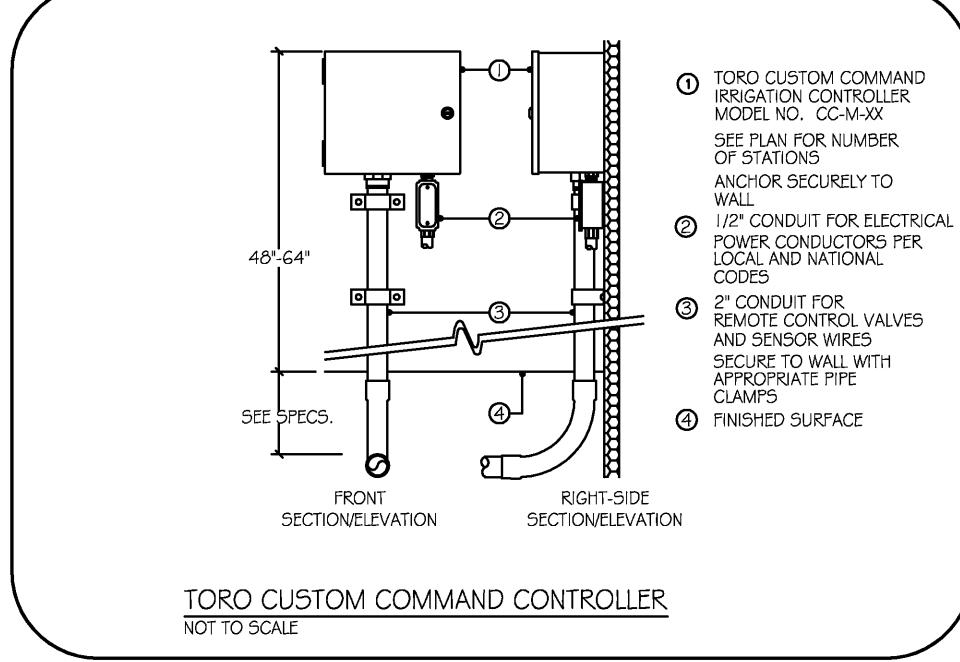
- COORDINATE THIS WORK WITH ALL OTHER TRADES.
- ALL PLUMBING AND ELECTRICAL SHALL BE INSTALLED ACCORDING TO STATE AND LOCAL CODES.
- ALL SLEEVES SHALL BE 4" PVC 1/2" (UNLESS OTHERWISE SPECIFIED). SLEEVE INSTALLATION UNDER WALKS SHALL BE THE RESPONSIBILITY OF THE IRRIGATION CONTRACTOR.
- ALL PIPE NOT SIZED DOWNSTREAM OF VALVE IS 1".
- IRRIGATION CONTRACTOR'S POINT OF CONNECTION SHALL BE ON 1-1/2" TYPE K COPPER PIPE STUBBED OUTSIDE OF THE BUILDING AT LOCATION SHOWN ON THE PLAN.
- 115V POWER INTO CONTROLLER SHALL BE SUPPLIED BY ELECTRICAL CONTRACTOR.
- CONTROLLER AND RAINSWITCH SHALL BE MOUNTED AT LOCATION SHOWN ON PLAN (VERIFY EXACT LOCATION WITH OWNER'S REPRESENTATIVE).
- IRRIGATION CONTRACTOR SHALL ADJUST THE FLOW CONTROL FEATURE ON ALL ELECTRIC VALVES PER THE MANUFACTURER'S RECOMMENDATIONS TO MAXIMIZE THE VALVES PERFORMANCE AND LONGEVITY.
- IF SITE PRESSURE IS NOT ADEQUATE, A BOOSTER PUMP AND RELATED EQUIPMENT MAY BE REQUIRED AT ADDITIONAL COST TO OWNER.
- IRRIGATION PIPE AND EQUIPMENT SHOWN IN PAVED AREAS IS FOR CLARITY ONLY AND SHALL BE INSTALLED WITHIN THE TURF & LANDSCAPE AREAS.
- PIPE ROUTING IS DIAGRAMMATIC. ALL EQUIPMENT AND PIPE ARE TO BE FIELD ADJUSTED TO TAKE INTO CONSIDERATION ANY OBSTRUCTIONS AND ALL LANDSCAPE.

WATER REQUIREMENTS: 29 GPM @ 5.1 PSI AT THE P.O.C.

ZONE NUMBER VALVE SIZE GPM ZONE TYPE

1-1	1"	5	TURF SPRAYS
1-2	1"	25	TURF ROTORS
1-3	1"	24	TURF ROTORS
1-4	1"	29	TURF ROTORS
1-5	1"	21	TURF SPRAYS
1-6	1"	9	TURF ROTORS
1-7	1"	13	LANDSCAPE SPRAYS
1-8	1"	13	TURF ROTORS
1-9	1"	21	TURF ROTORS
1-10	1"	24	TURF ROTORS
1-11	1"	25	TURF ROTORS
1-12	1"	19	TURF ROTORS
1-13	1"	19	TURF ROTORS
1-14	1"	21	TURF SPRAYS
1-15	1"	21	LANDSCAPE SPRAYS
1-16	1"	21	TURF ROTORS
1-17	1"	19	TURF ROTORS

— CONTROLLER NUMBER
— ZONE NUMBER SYMBOL
— STATION NUMBER
— ZONED RURAL RESIDENTIAL



THE COTTAGE at THORNAPPLE MANOR

Hastings, MI

PROJ. NO.: 2011-11-021

9/20/11 SCHEMATIC DESIGN MEETING 1.3
9/21/11 100% SCHEMATIC DESIGN
11/17/11 100% DESIGN DEVELOPMENT
2/21/12 ISSUED FOR BIDS

CONSTRUCTION MANAGER
CM CONTRACTING
CIVIL ENGINEER
HURLEY & STEWART
STRUCTURAL ENGINEER
JDH ENGINEERING
MECH ENGINEER
E2W ENGINEERING
FOOD SERVICE CONSULTANT
MILLIS & ASSOCIATES

ECKERT WORDELL
ARCHITECTURE • ENGINEERING • INTERIOR DESIGN
161 East Michigan Ave., Suite 200
Kalamazoo, MI 49007-3807
PHONE: 269.388.7313
FAX: 269.388.7330
WEB: www.eckert-wordell.com

IRRIGATION PLAN

C206

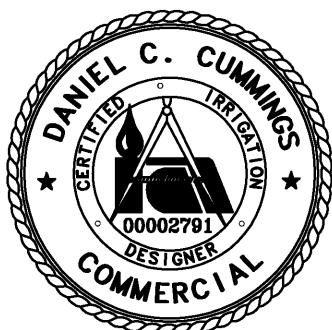
TORO
Spartan Distributors

487 W. Division St.
Spartan, MI 49345
Ph: 616.687.7301
Fax: 616.687.6206

1050 Opayke Road
Auburn Hills, MI 48326
Ph: 248.373.8800
Fax: 248.373.8899

800.822.2216

Design By: CUMMINGS, C.L.D.
Plan #: 12-2066
Date: 1-20-12
Revisions: 2-20-12 DCC



Know what's below.
Call before you dig.

THIS DESIGN IS BASED ON INFORMATION PROVIDED BY THE ARCHITECT AND/OR OWNER WHO ASSUMES FULL RESPONSIBILITY FOR ITS CORRECTNESS.