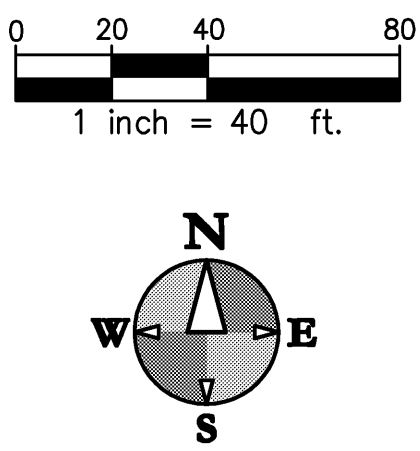
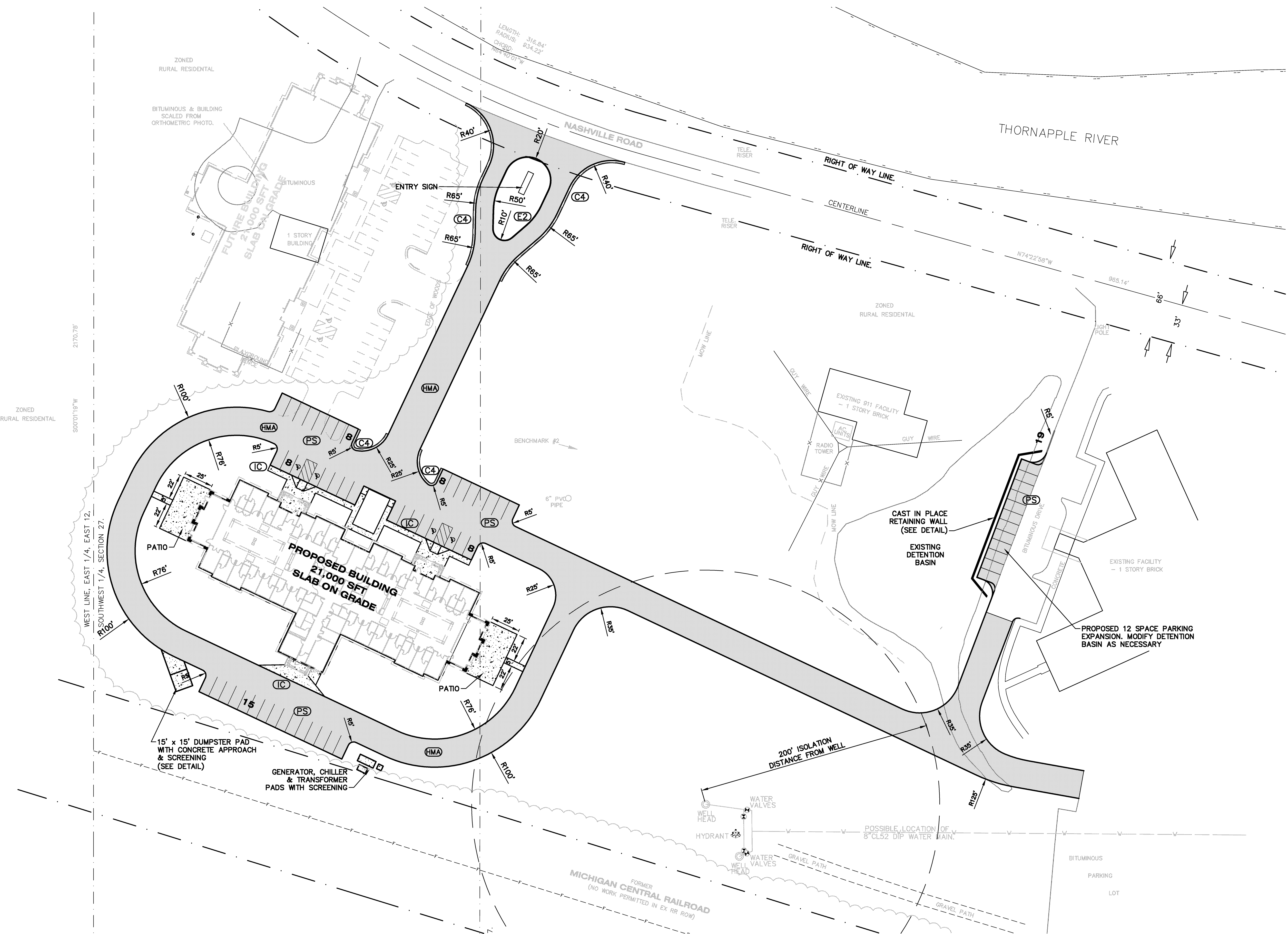


- NOTES**
1. ALL DIMENSIONS SHOWN ARE TO THE EDGE OF METAL.
 2. PROVIDE CURB CUTS/RAMPS AT ALL BARRIER FREE ACCESS POINTS.
 3. PAVEMENT MARKINGS AND SIGNAGE SHALL CONFORM TO THE CURRENT MICHIGAN MANUAL OF UNIFORM TRAFFIC CONTROL DEVICES AND MICHIGAN BARRIER FREE CODE.
 4. MATCH EXISTING CURB & GUTTER SECTIONS WHEN CONNECTING TO THEM. CONDITIONS VARY THROUGHOUT PROJECT.
 5. IF ANY ERRORS, DISCREPANCIES, OR OMISSIONS BECOME APPARENT, THESE SHALL BE BROUGHT TO THE ATTENTION OF THE ENGINEER PRIOR TO CONSTRUCTION OF ANYTHING AFFECTED SO THAT CLARIFICATION OR REDESIGN MAY OCCUR.
 6. ALL WORK SHALL CONFORM TO ALL LOCAL, STATE AND FEDERAL LAWS, RULES AND REGULATIONS IN FORCE AT THE TIME OF CONSTRUCTION.
 7. ALL EXTERIOR CONCRETE SHALL BE MDOT GRADE P1 (3500PSI), AIR ENTRAINED, LIMESTONE AGGREGATE, BROOM FINISHED, CURING SEAL.



- SITE LEGEND**
- HMA HMA PAVEMENT
 - C4 C4 CURB AND GUTTER
 - E2 E2 CURB
 - IC INTEGRAL CURB WALK
 - PS PARKING STRIPING (9' x 18')

- LEGEND**
- LIGHT DUTY HMA PAVEMENT
 - CONCRETE SIDEWALK
 - CONCRETE CURB AND GUTTER TYPE VARIES



THE COTTAGE at THORNAPPLE MANOR
Hastings, MI

PROJ. NO.: 2011-11-021

- | | |
|---------|--------------------------|
| 9/20/11 | SCHEMATIC DESIGN MEETING |
| 9/21/11 | 100% SCHEMATIC DESIGN |
| 1/30/12 | 100% DESIGN DEVELOPMENT |
| 2/08/12 | 100% CD QA REVIEW |
| 2/21/12 | ISSUED FOR BIDS |

- CONSTRUCTION MANAGER
CM CONTRACTING
- CIVIL ENGINEER
HURLEY & STEWART
- STRUCTURAL ENGINEER
JDH ENGINEERING
- MSEP ENGINEER
E2W ENGINEERING
- FOOD SERVICE CONSULTANT
MILLIS & ASSOCIATES



ECKERT WORDELL
ARCHITECTURE • ENGINEERING • INTERIOR DESIGN

161 East Michigan Ave., Suite 200
Kalamazoo, MI 49007-3907
PHONE: 269.388.7313
FAX: 269.388.7330
WEB: www.eckert-wordell.com

© 2011 Eckert Wordell, LLC